

# V&V Reference Report

## L2 ASCDS Version : 8.4.4

Observation 9081 - L2 Version 2  
Chandra X-Ray Center

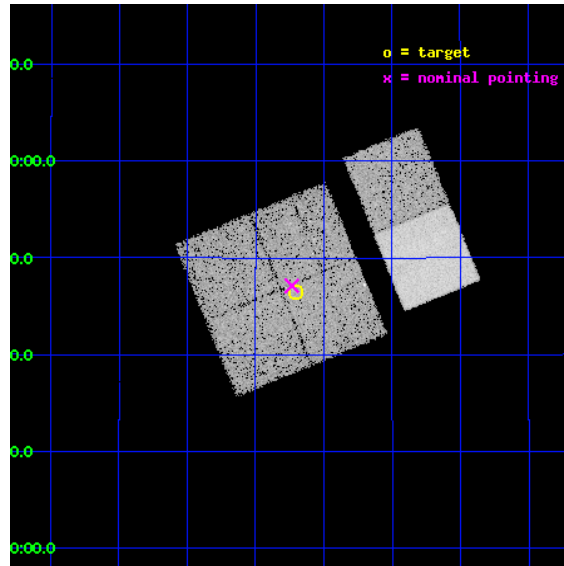
L2 Processing Date : May 10 2012

## Contents

<b>1</b>	<b>Front</b>	<b>2</b>
<b>2</b>	<b>OBI</b>	<b>3</b>
2.1	OBI . . . . .	3
2.1.1	Images . . . . .	3
2.1.2	Bias . . . . .	3
2.1.3	Parameters . . . . .	4
2.1.4	Events . . . . .	4
2.2	Compared Parameters . . . . .	5
2.3	Aspect . . . . .	6
2.4	Star Slots . . . . .	9
2.4.1	Slot 3 . . . . .	9
2.4.2	Slot 4 . . . . .	10
2.4.3	Slot 5 . . . . .	11
2.4.4	Slot 6 . . . . .	12
2.4.5	Slot 7 . . . . .	13
2.5	FID Slots . . . . .	14
2.5.1	Slot 0 . . . . .	14
2.5.2	Slot 1 . . . . .	15
2.5.3	Slot 2 . . . . .	16
<b>A</b>	<b>Summary</b>	<b>17</b>
A.1	Status . . . . .	17
A.2	Comments . . . . .	17

# 1 Front

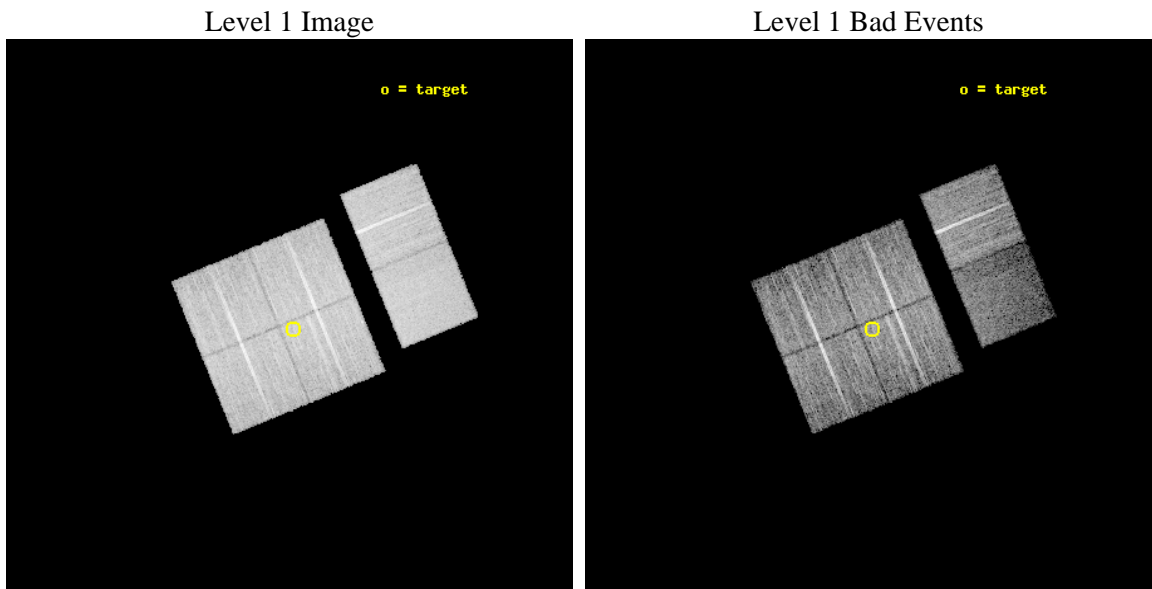
seq_num	500944	Sequence number
obs_id	9081	Observation id
title	Snap-shot survey of potential GeV and TeV pulsars	Proposal title
observer	Professor Gordon Garmire	Principal investigator
object	J1928+1746	Source name
dtcycle	0	&#160
cycle	P	events from which exps? Prim/Second/Both
ra_targ	292.176667	Observer's specified target RA [deg]
dec_targ	17.774167	Observer's specified target Dec [deg]
ra_nom	292.18348522563	Nominal RA [deg]
dec_nom	17.785250579337	Nominal Dec [deg]
roll_nom	67.680372547647	Nominal Roll [deg]
revision	2	Processing version of data
ontime	10044.79996264	Sum of GTIs [s]
livetime	9917.6066572605	Livetime [s]
ontime0	10041.559111774	Sum of GTIs [s]
ontime1	10044.79996264	Sum of GTIs [s]
ontime2	10044.79996264	Sum of GTIs [s]
ontime3	10044.79996264	Sum of GTIs [s]
ontime6	10041.55900234	Sum of GTIs [s]
ontime7	10044.79996264	Sum of GTIs [s]
l2events	101407	Number of level 2 events



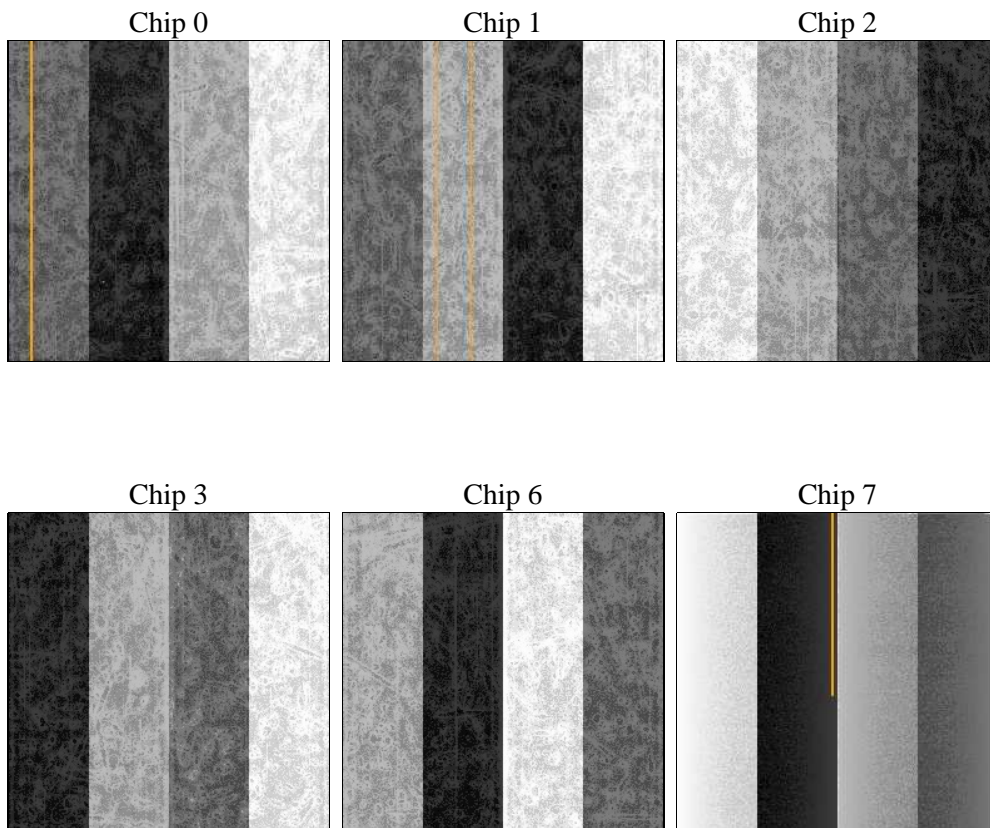
## 2 OBI

### 2.1 OBI

#### 2.1.1 Images



#### 2.1.2 Bias



### 2.1.3 Parameters

obi_num	0	Obi number	sched_exp_time	10000.453000	[s] Scheduled observation exposure time
ascdsver	8.4.4	Processing system revision	ontime	10044.79996264	Sum of GTIs [s]
caldbver	4.4.9	&#160	ontime0	10041.559111774	Sum of GTIs [s]
date	2012-05-10T21:59:17	Date and time of file creation	ontime1	10044.79996264	Sum of GTIs [s]
revision	2	Processing version of data	ontime2	10044.79996264	Sum of GTIs [s]
			ontime3	10044.79996264	Sum of GTIs [s]
			ontime6	10041.55900234	Sum of GTIs [s]
			ontime7	10044.79996264	Sum of GTIs [s]
			l1events	479752	Number of level 1 events

### 2.1.4 Events

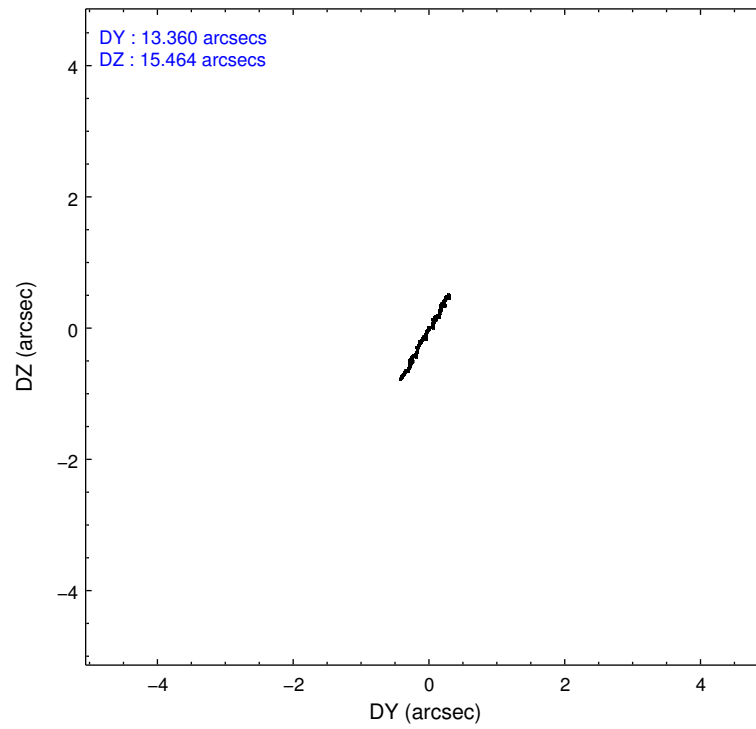
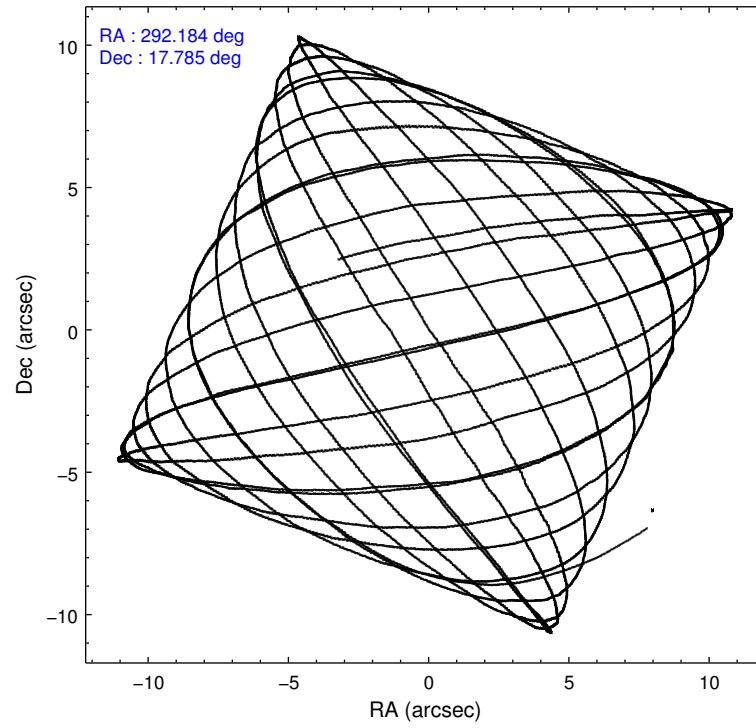
	ccd 0	ccd 1	ccd 2	ccd 3	ccd 6	ccd 7		ccd 0	ccd 1	ccd 2	ccd 3	ccd 6	ccd 7
level 1 events	75621	74224	83391	81075	84154	81287	grade 0 events	6432	6568	6961	6721	7212	4565
rejected events	63004	60968	70378	68140	70202	36241		8%	8%	8%	8%	8%	5%
rejected %	83%	82%	84%	84%	83%	44%	grade 1 events	62	53	56	71	74	113
								0%	0%	0%	0%	0%	0%
							grade 2 events	2460	2392	2391	2391	2466	8979
								3%	3%	2%	2%	2%	11%
							grade 3 events	1064	1162	942	1055	1082	4012
								1%	1%	1%	1%	1%	4%
							grade 4 events	989	1163	1073	1003	1159	3930
								1%	1%	1%	1%	1%	4%
							grade 5 events	2216	2491	2119	2604	2649	7745
								2%	3%	2%	3%	3%	9%
							grade 6 events	1683	1982	1662	1777	2048	23589
								2%	2%	1%	2%	2%	29%
							grade 7 events	60715	58413	68187	65453	67464	28354
								80%	78%	81%	80%	80%	34%

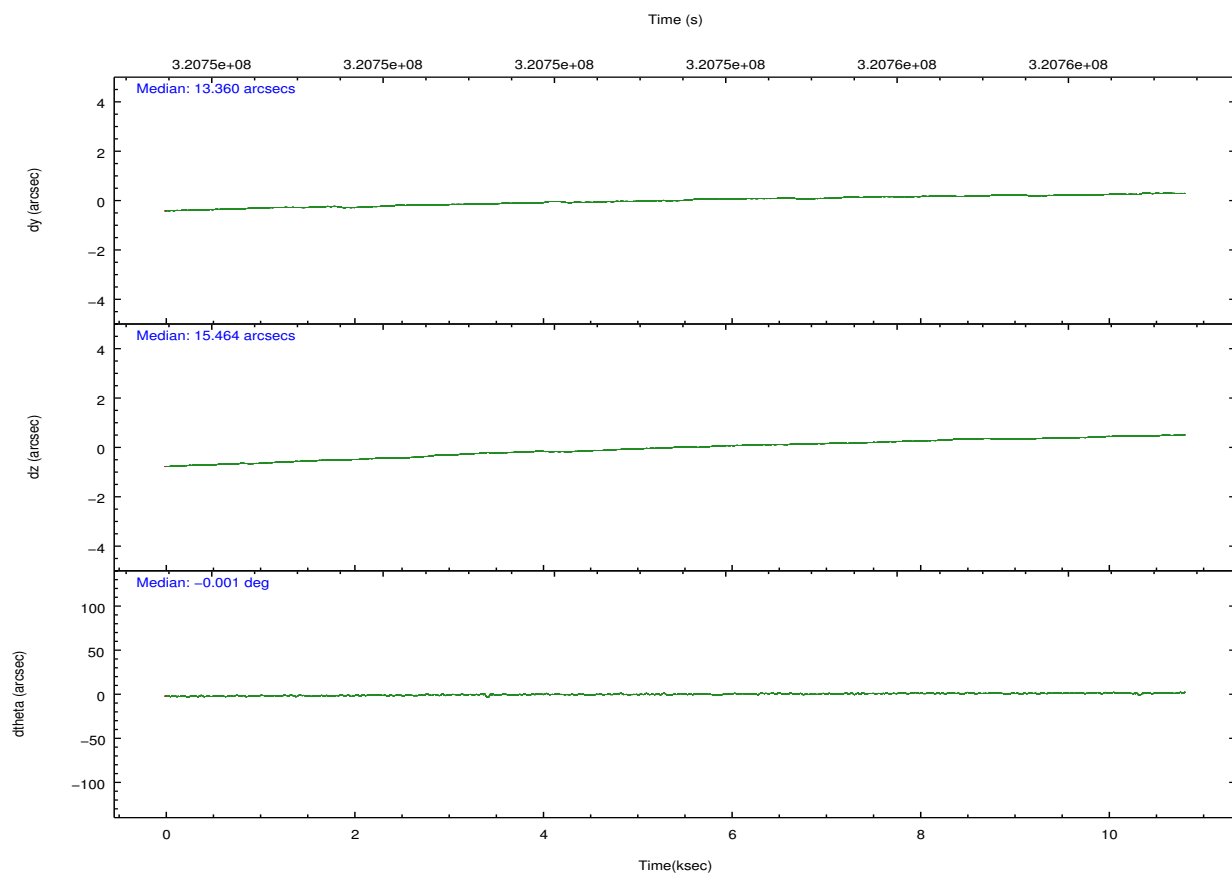
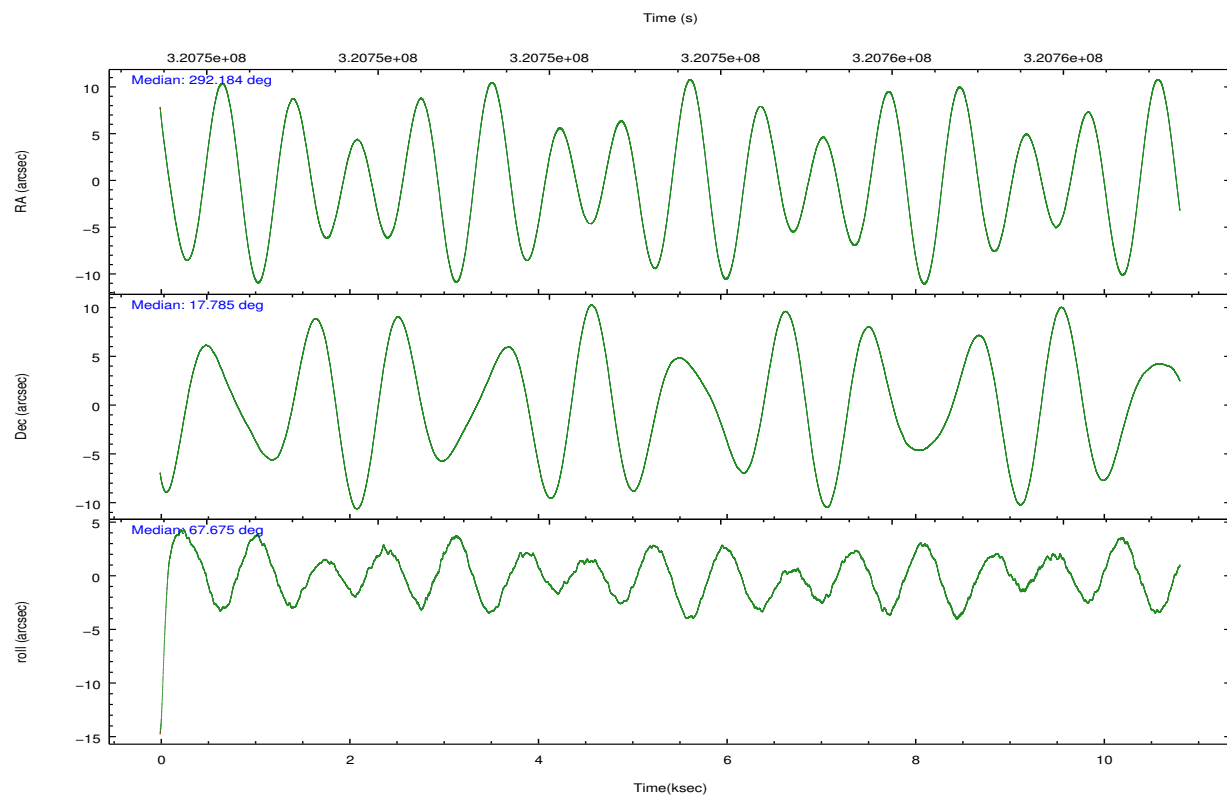


## 2.2 Compared Parameters

Parameter	Planned	Actual	Parameter	Planned	Actual
Instrument	ACIS	ACIS	Obspar format version number	7	7
Detector	ACIS-012367	ACIS-012367	Obspar file type	PREDICTED	ACTUAL
Grating	NONE	NONE	Obspar update status	NONE	UPDATED
Data mode	VFAINT	VFAINT	CCD I0 on	Y	Y
Observation mode	POINTING	POINTING	CCD I1 on	Y	Y
[deg] Pointing RA	292.187435	292.1834852256282	CCD I2 on	Y	Y
[deg] Pointing Dec	17.758002	17.78525057933657	CCD I3 on	Y	Y
[deg] Pointing Roll	67.470495	67.68037254764656	CCD S0 on	N	N
[mm] SIM focus pos	-0.782348	-0.7809083437167272	CCD S1 on	N	N
[mm] SIM defocus	0	0.001439871863259334	CCD S2 on	O2	Y
[mm] SIM translation stage pos	-232.122463	-232.1190743247176	CCD S3 on	O1	Y
[mm] SIM translation stage offset	-1.47	-1.473378678212043	CCD S4 on	N	N
[s] Observation start time (MET)	320748802.184000	320747482.2308	CCD S5 on	N	N
Observation start date	2008-03-01T08:52:17	2008-03-01T08:31:22	Number of optional ACIS chips dropped	0	0
[s] Observation end time (MET)	320758803.184000	320759042.69386	On-chip summing requested	N	N
Observation end date	2008-03-01T11:38:58	2008-03-01T11:44:02	Subarray requested	NONE	NONE
Read mode	TIMED	TIMED	Alternating exposures requested	N	N
			[s] Primary exposure time	0.000000	3.2

## 2.3 Aspect



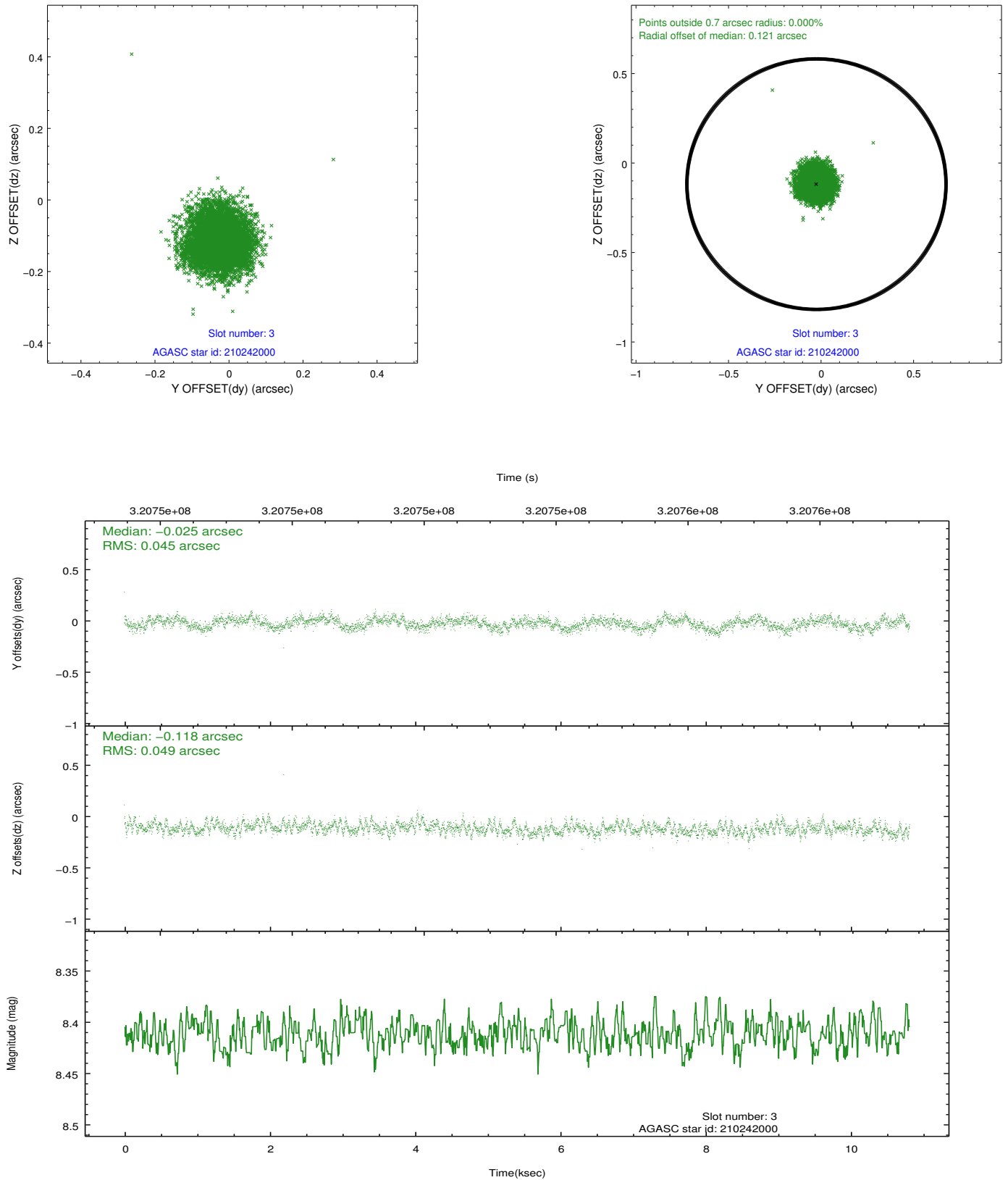


### Slot Statistics

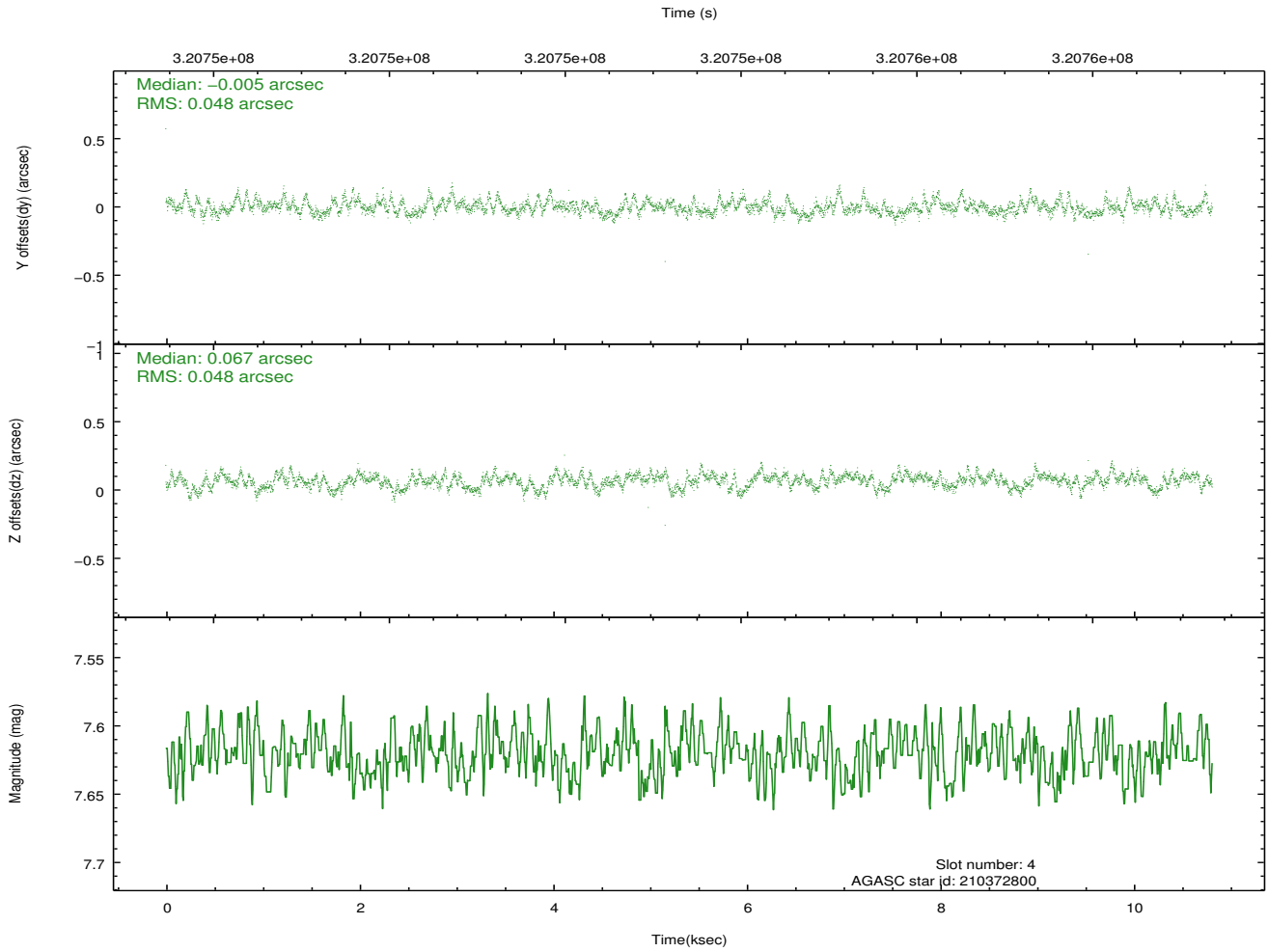
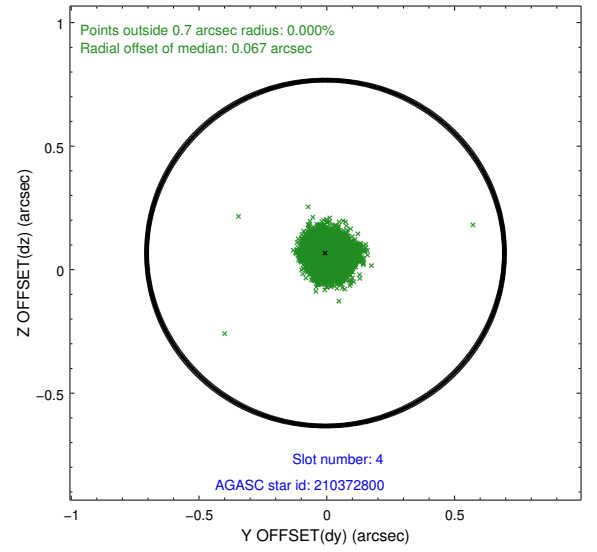
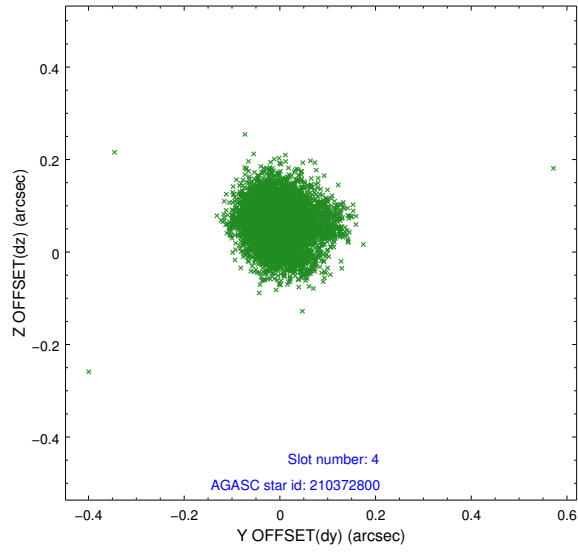
slot	status	id	mag	n_pts	med_dy	med_dz	dr1	dr2	ra	dec	mean_y	mean_z
0	FID	ACIS-I-1	7.23	2638	0.066	-0.028	0.015	0.030	0.000000	0.000000	926.18	-869.22
1	FID	ACIS-I-5	7.21	2637	-0.245	0.060	0.013	0.020	0.000000	0.000000	-1821.94	1028.15
2	FID	ACIS-I-6	7.23	2638	0.087	0.036	0.012	0.019	0.000000	0.000000	391.27	1673.13
3	GUIDE	210242000	8.41	5274	-0.025	-0.118	0.071	0.112	291.855938	18.188243	997.16	1641.45
4	GUIDE	210372800	7.62	5274	-0.005	0.067	0.072	0.116	292.605285	17.695257	342.37	-1408.88
5	GUIDE	210373136	7.97	5276	-0.112	0.145	0.075	0.119	292.893985	17.958185	1597.38	-1956.85
6	GUIDE	210249792	9.20	5266	0.127	0.034	0.089	0.140	291.601409	17.343973	-2144.94	1290.02
7	GUIDE	210247184	9.07	5270	0.014	-0.126	0.085	0.135	291.846737	17.208413	-2275.77	324.83

## 2.4 Star Slots

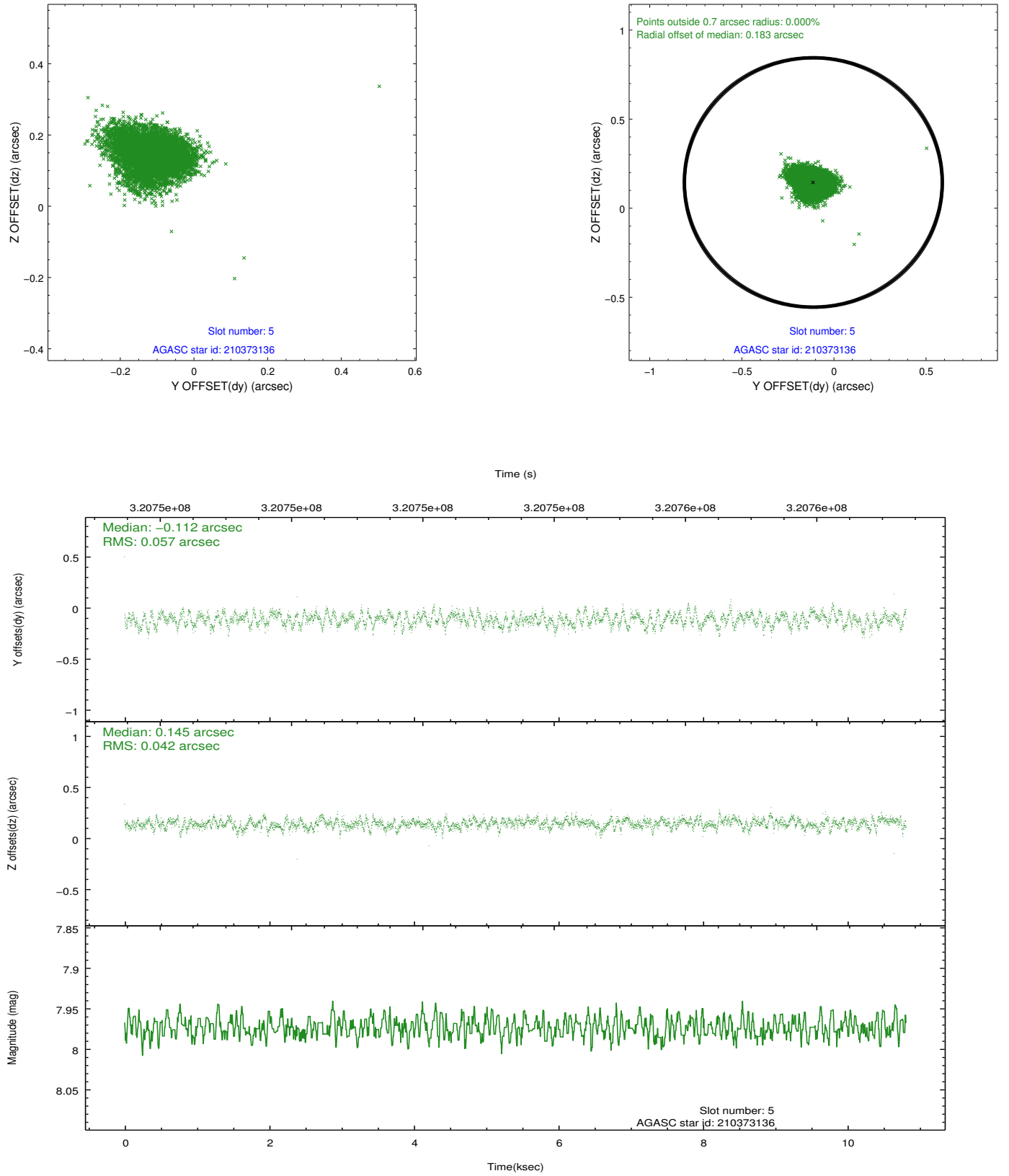
### 2.4.1 Slot 3



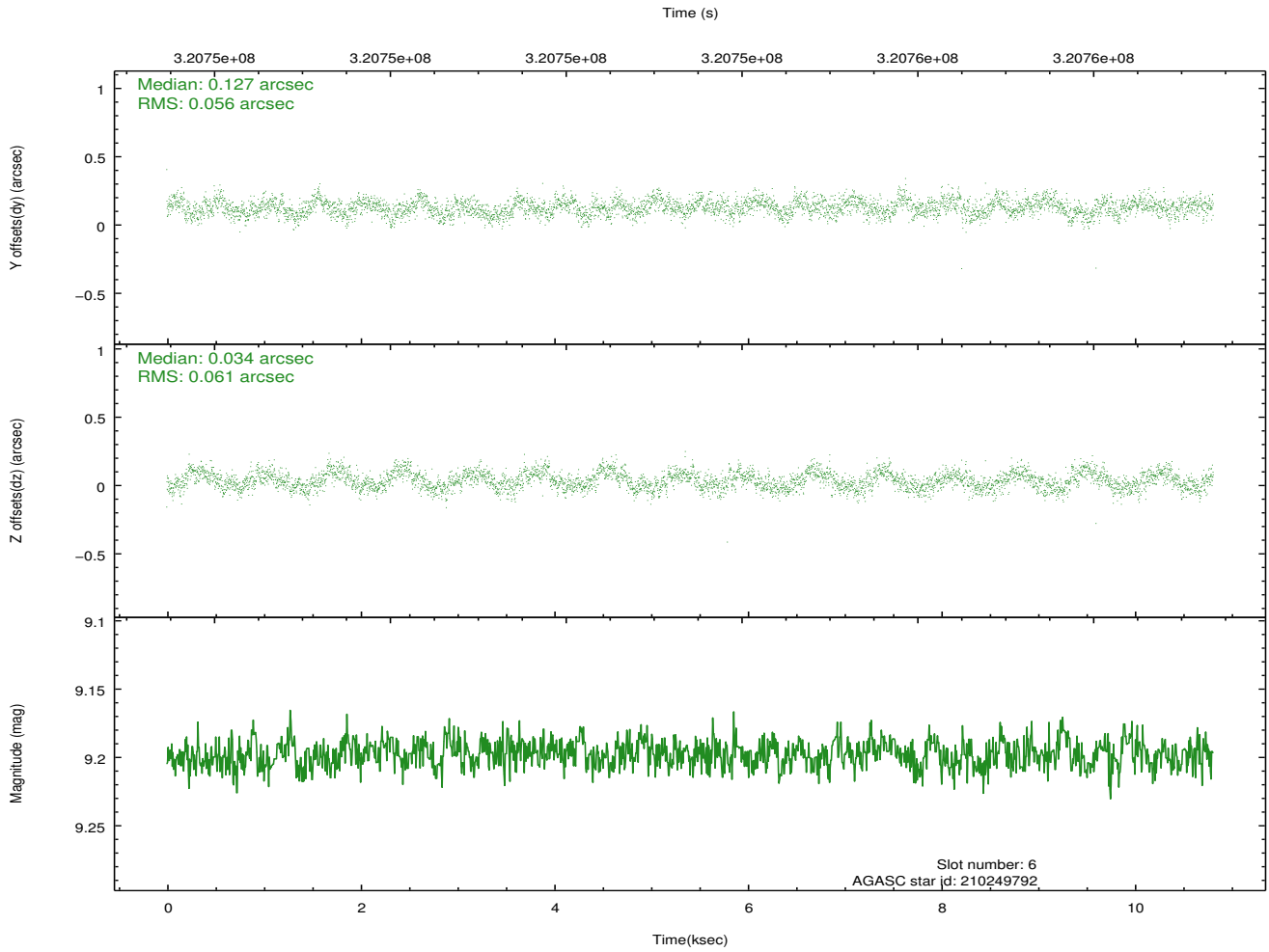
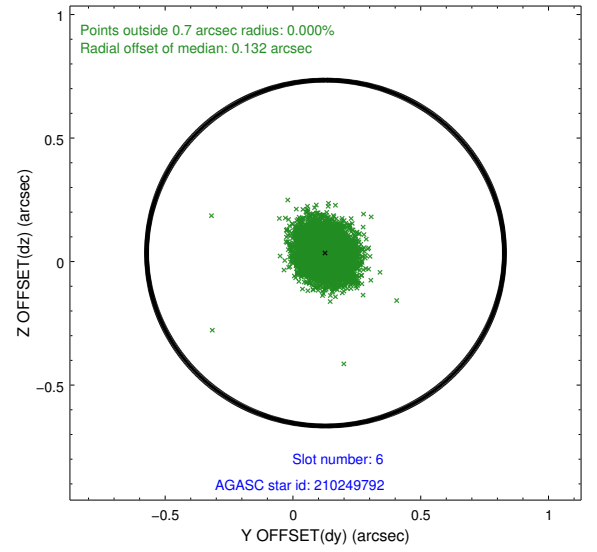
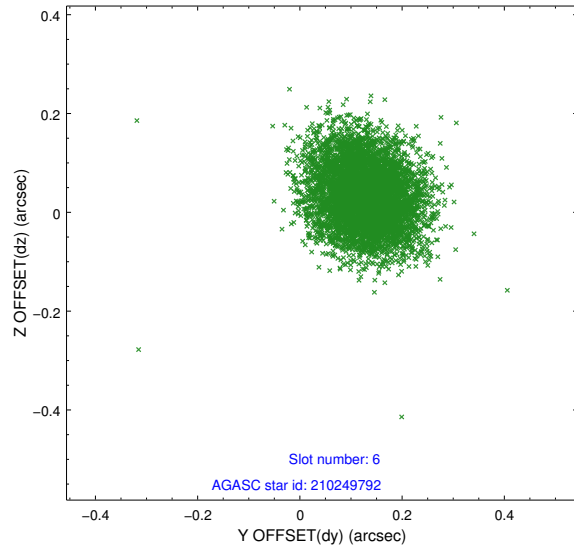
## 2.4.2 Slot 4



### 2.4.3 Slot 5

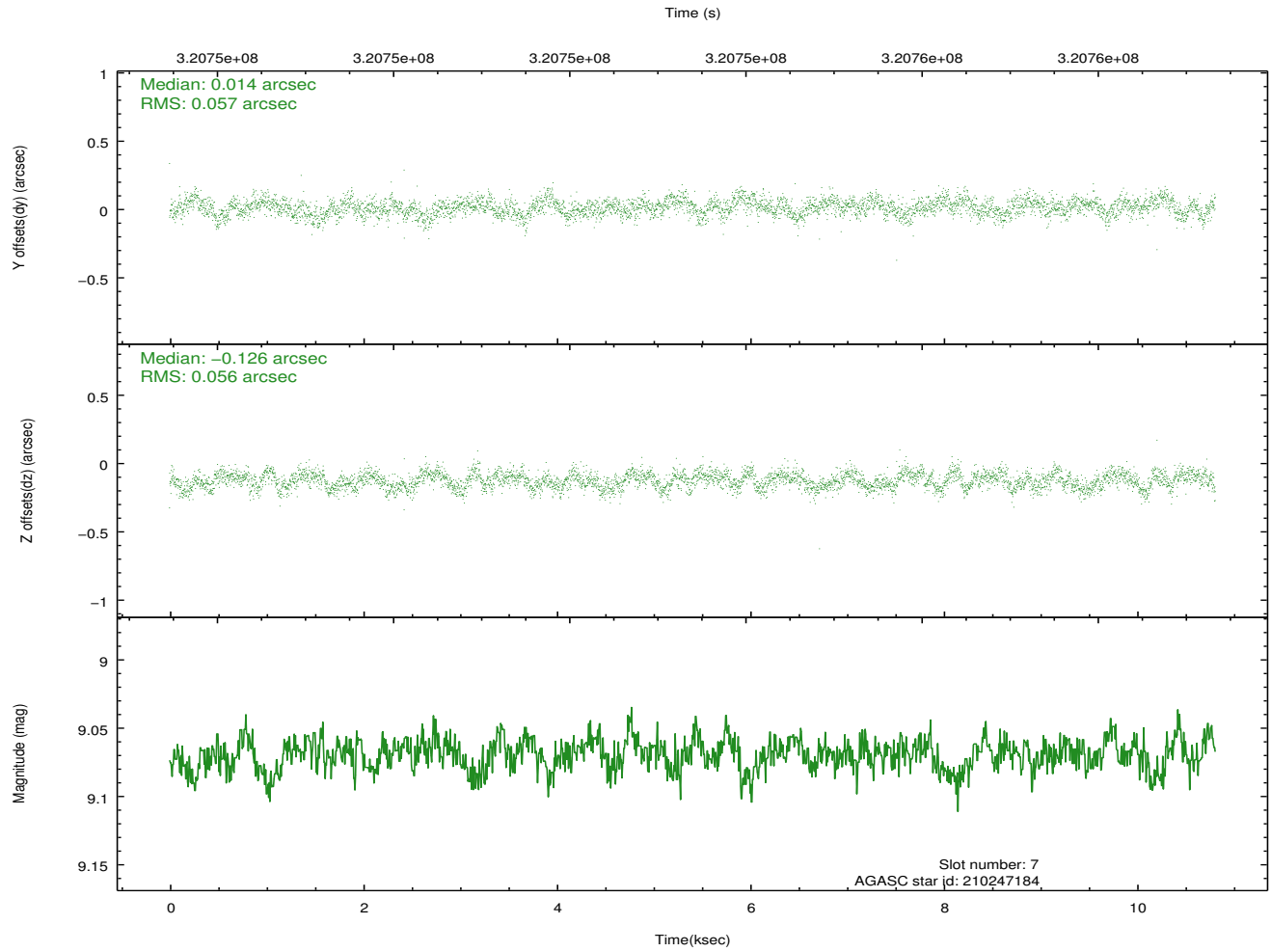
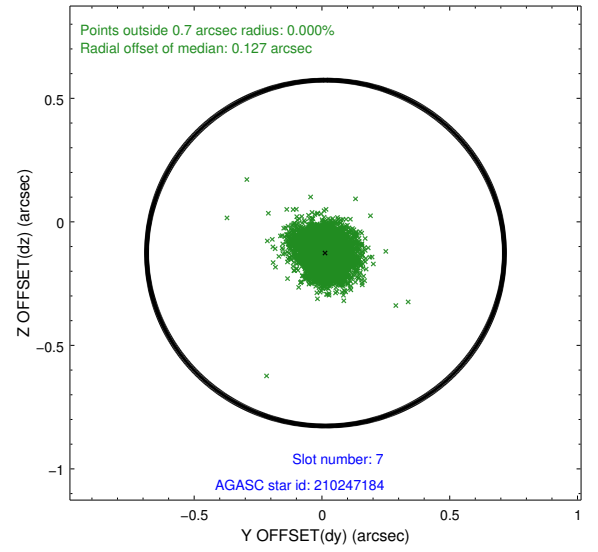
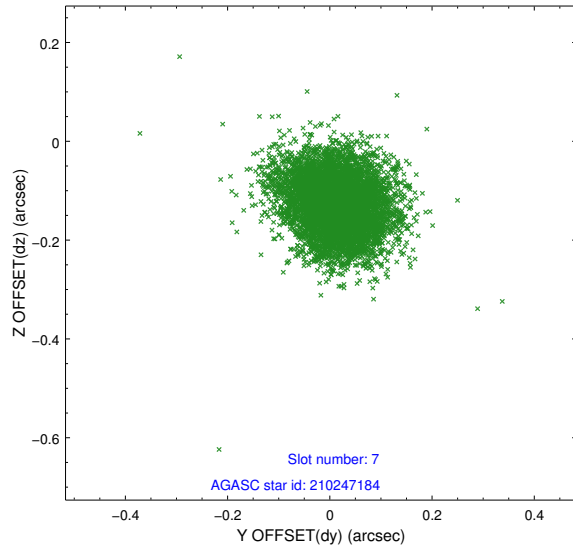


## 2.4.4 Slot 6



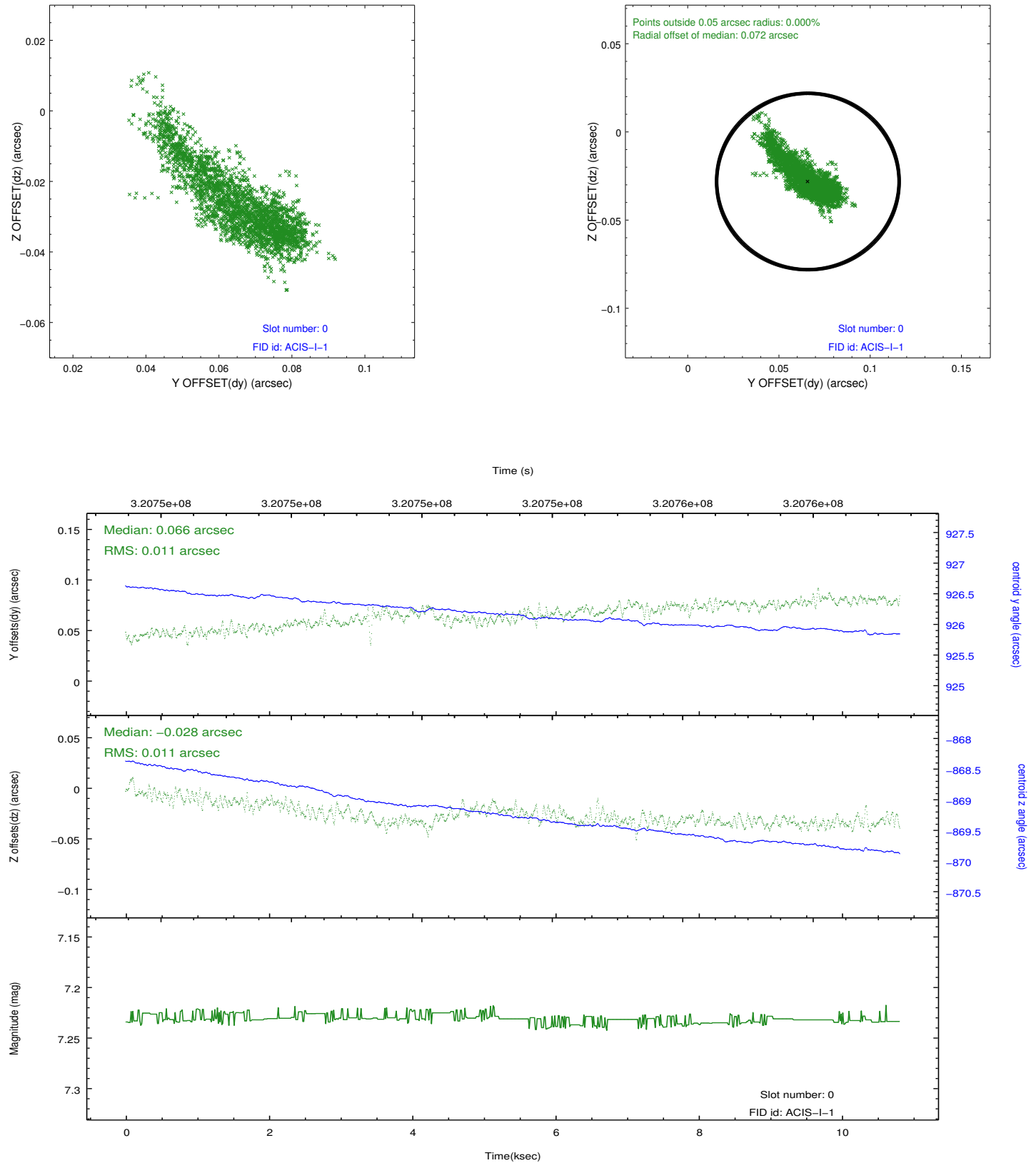


## 2.4.5 Slot 7

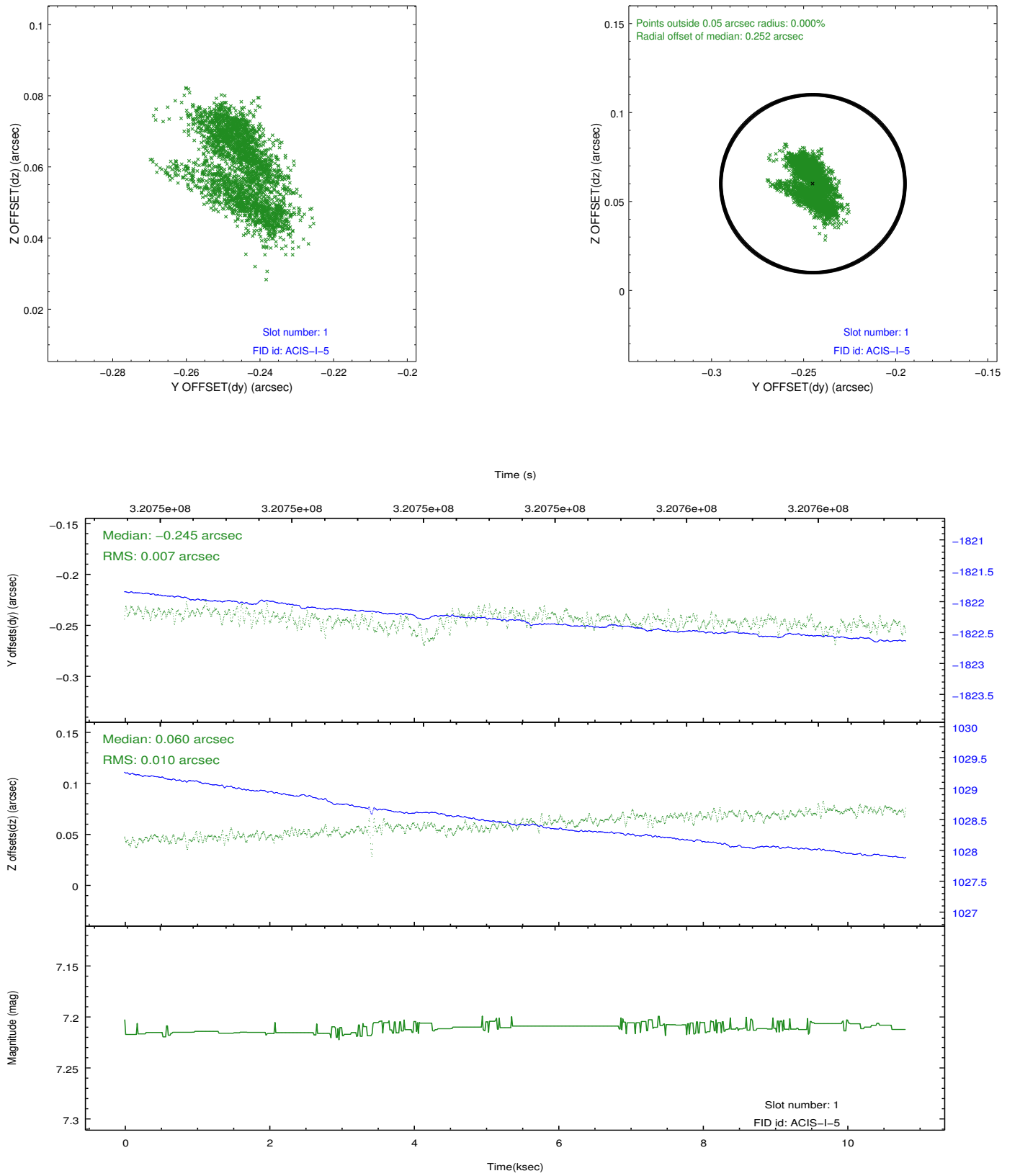


## 2.5 FID Slots

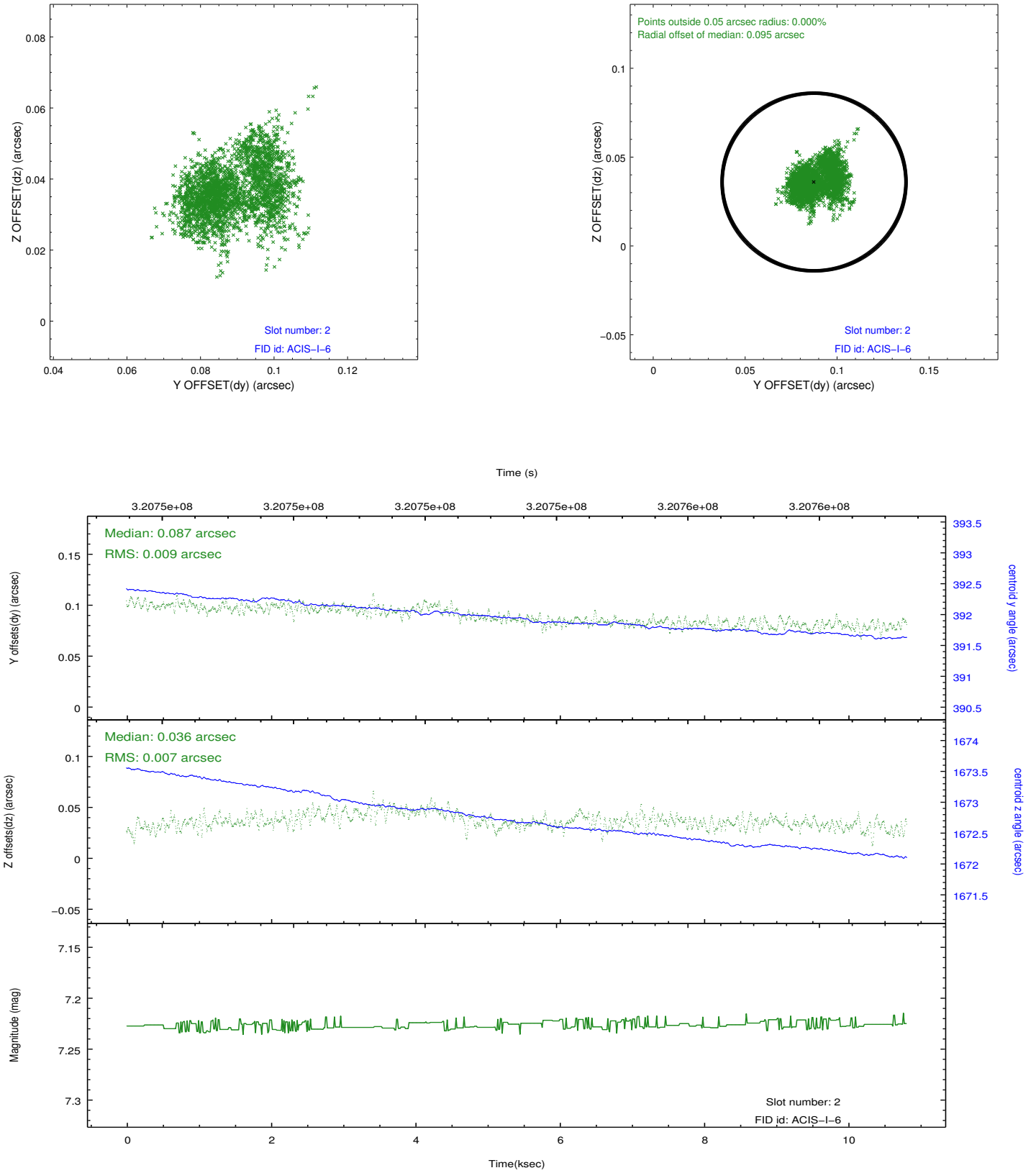
### 2.5.1 Slot 0



## 2.5.2 Slot 1



### 2.5.3 Slot 2



## A Summary

### A.1 Status

V&V Scientist	Jen Lauer
V&V Date (YYYY-MM-DD)	2012.05.14
V&V Edition	1
V&V Disposition and Status	OK
V&V Charge Time	10.0447999

### A.2 Comments