

# V&V Reference Report

## L2 ASCDS Version : 8.4.4

Observation 8601 - L2 Version 2  
Chandra X-Ray Center

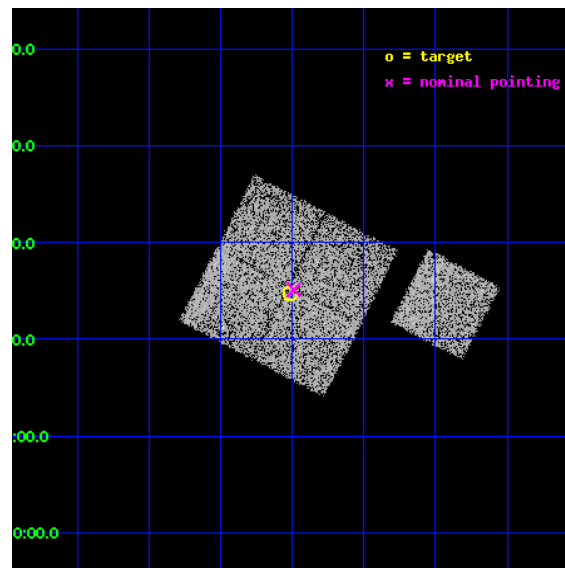
L2 Processing Date : May 19 2012

## Contents

<b>1</b>	<b>Front</b>	<b>2</b>
<b>2</b>	<b>OBI</b>	<b>3</b>
2.1	OBI . . . . .	3
2.1.1	Images . . . . .	3
2.1.2	Bias . . . . .	3
2.1.3	Parameters . . . . .	4
2.1.4	Events . . . . .	4
2.2	Compared Parameters . . . . .	5
2.3	Aspect . . . . .	6
2.4	Star Slots . . . . .	9
2.4.1	Slot 3 . . . . .	9
2.4.2	Slot 4 . . . . .	10
2.4.3	Slot 5 . . . . .	11
2.4.4	Slot 6 . . . . .	12
2.4.5	Slot 7 . . . . .	13
2.5	FID Slots . . . . .	14
2.5.1	Slot 0 . . . . .	14
2.5.2	Slot 1 . . . . .	15
2.5.3	Slot 2 . . . . .	16
<b>A</b>	<b>Summary</b>	<b>17</b>
A.1	Status . . . . .	17
A.2	Comments . . . . .	17

# 1 Front

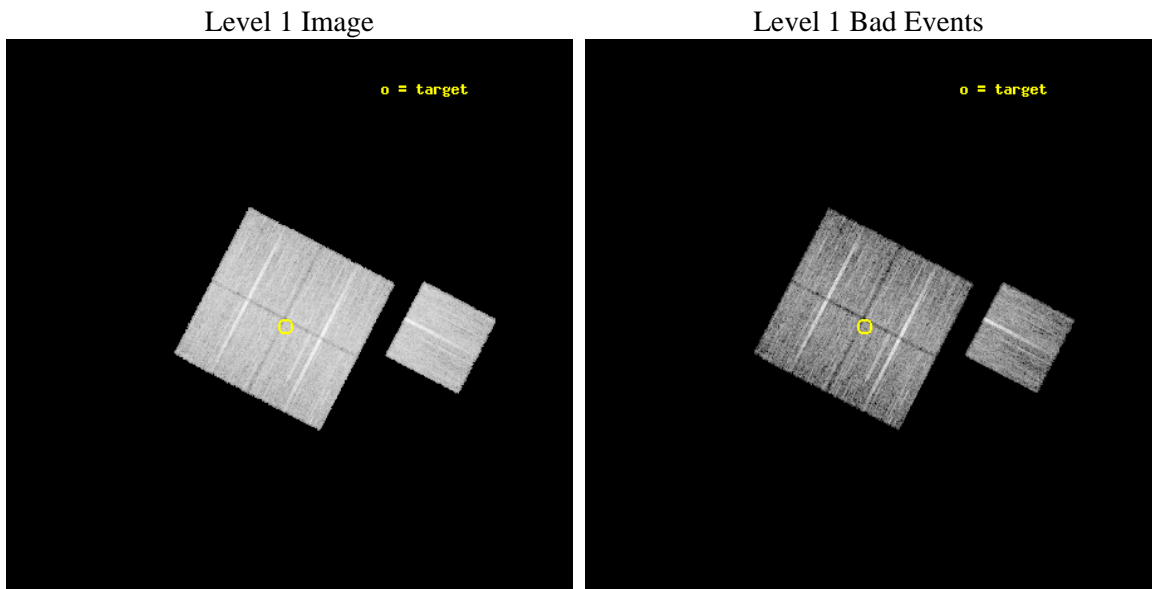
seq_num	900738	Sequence number
obs_id	8601	Observation id
title	Chandra Observations of the DEEP2 Fields	Proposal title
observer	Dr. Stephen Murray	Principal investigator
object	DEEP2 Field 3	Source name
dtcycle	0	&#160
cycle	P	events from which exps? Prim/Second/Both
ra_targ	353.25281	Observer's specified target RA [deg]
dec_targ	0.245683	Observer's specified target Dec [deg]
ra_nom	353.24710450214	Nominal RA [deg]
dec_nom	0.25140516097245	Nominal Dec [deg]
roll_nom	117.50877498344	Nominal Roll [deg]
revision	2	Processing version of data
ontime	9179.0590704083	Sum of GTIs [s]
livetime	9059.1279061285	Livetime [s]
ontime0	9179.0590703487	Sum of GTIs [s]
ontime1	9182.2000706196	Sum of GTIs [s]
ontime2	9182.2000706196	Sum of GTIs [s]
ontime3	9179.0590704083	Sum of GTIs [s]
ontime6	9182.2000706196	Sum of GTIs [s]
l2events	31671	Number of level 2 events



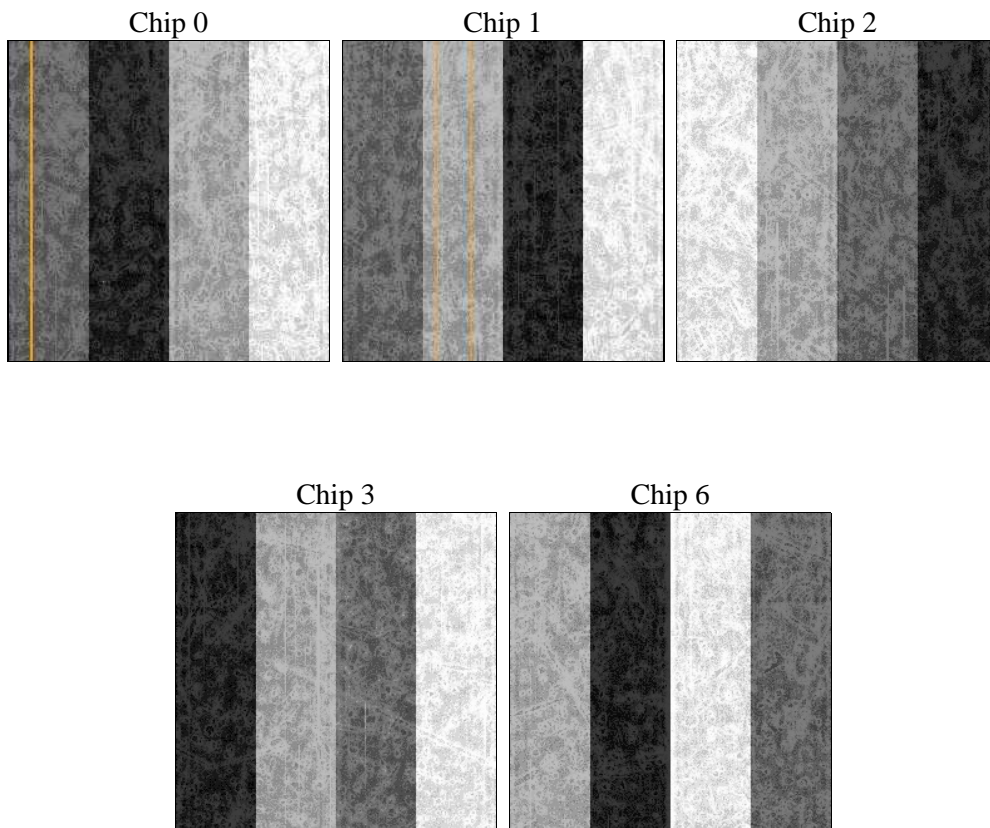
## 2 OBI

### 2.1 OBI

#### 2.1.1 Images



#### 2.1.2 Bias



### 2.1.3 Parameters

obi_num	0	Obi number	sched_exp_time	9000.000000	[s] Scheduled observation exposure time
ascdsver	8.4.4	Processing system revision	ontime	9179.0590704083	Sum of GTIs [s]
caldsver	4.4.9	&#160	ontime0	9179.0590703487	Sum of GTIs [s]
date	2012-05-19T01:57:18	Date and time of file creation	ontime1	9182.2000706196	Sum of GTIs [s]
revision	2	Processing version of data	ontime2	9182.2000706196	Sum of GTIs [s]
			ontime3	9179.0590704083	Sum of GTIs [s]
			ontime6	9182.2000706196	Sum of GTIs [s]
			l1events	398528	Number of level 1 events

### 2.1.4 Events

	ccd 0	ccd 1	ccd 2	ccd 3	ccd 6
level 1 events	77373	77831	84695	78077	80552
rejected events	69886	69256	77324	71038	72951
rejected %	90%	88%	91%	90%	90%

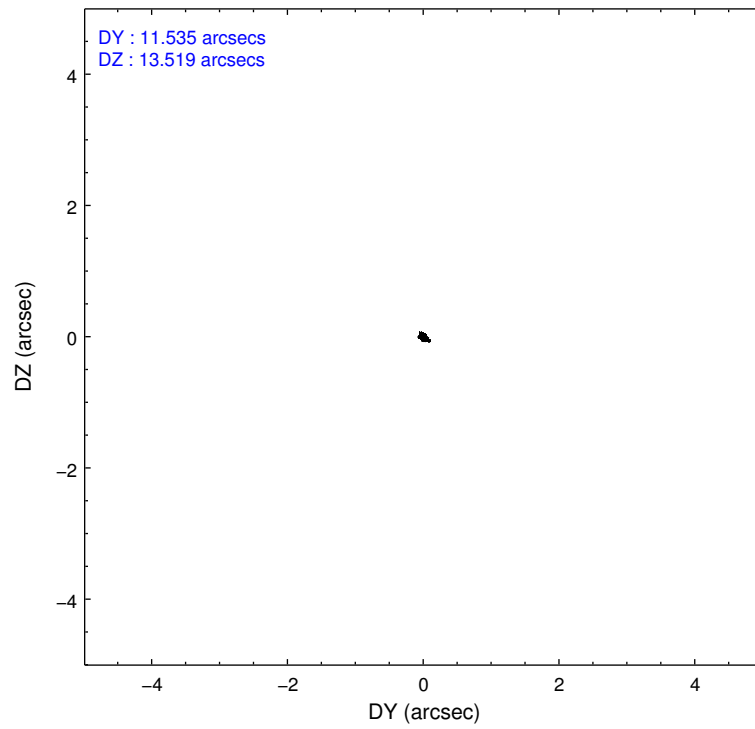
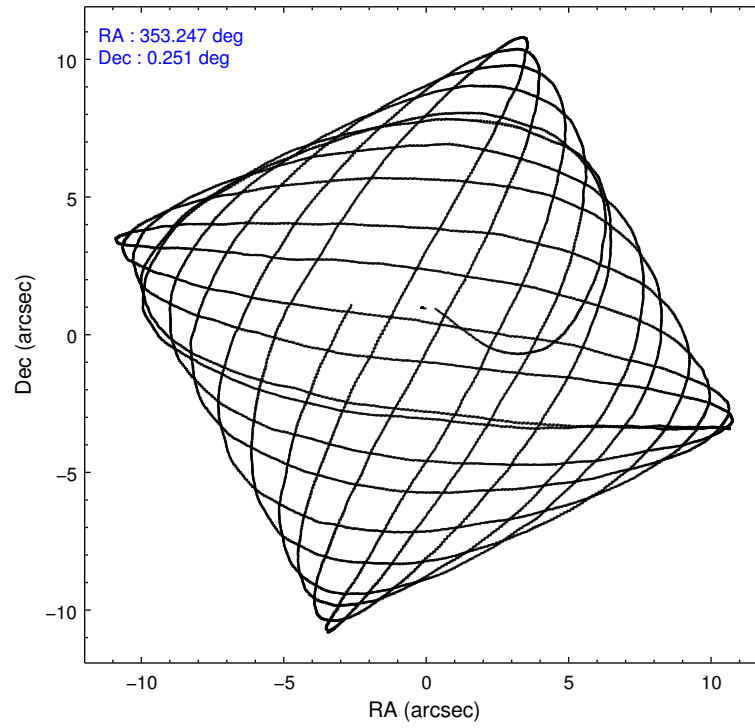
	ccd 0	ccd 1	ccd 2	ccd 3	ccd 6
grade 0 events	2715	3310	2791	2629	2809
	3%	4%	3%	3%	3%
grade 1 events	42	43	46	54	37
	0%	0%	0%	0%	0%
grade 2 events	1960	2078	1867	1587	1771
	2%	2%	2%	2%	2%
grade 3 events	875	966	848	855	901
	1%	1%	1%	1%	1%
grade 4 events	851	972	884	844	870
	1%	1%	1%	1%	1%
grade 5 events	2863	3283	2625	3317	3268
	3%	4%	3%	4%	4%
grade 6 events	1597	1801	1491	1597	1746
	2%	2%	1%	2%	2%
grade 7 events	66470	65378	74143	67194	69150
	85%	83%	87%	86%	85%

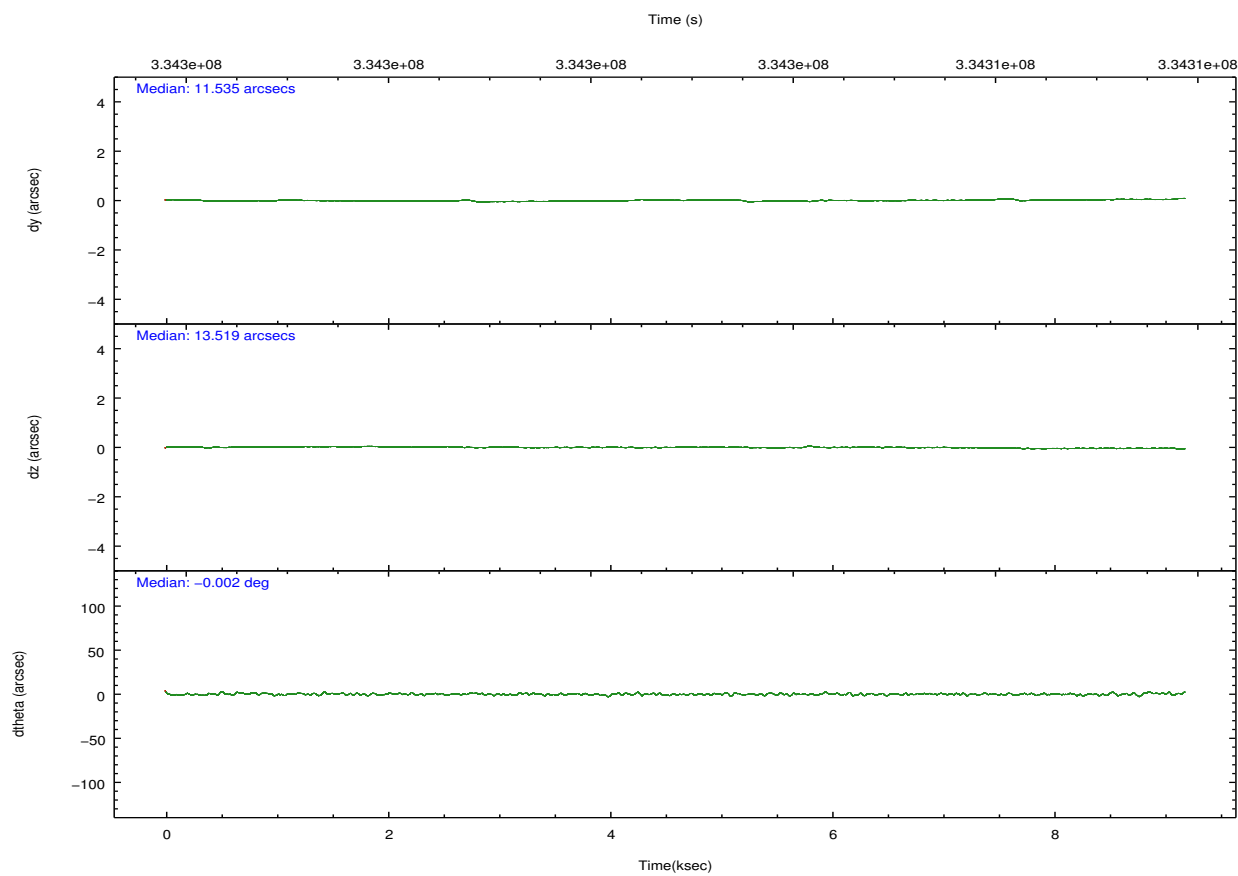
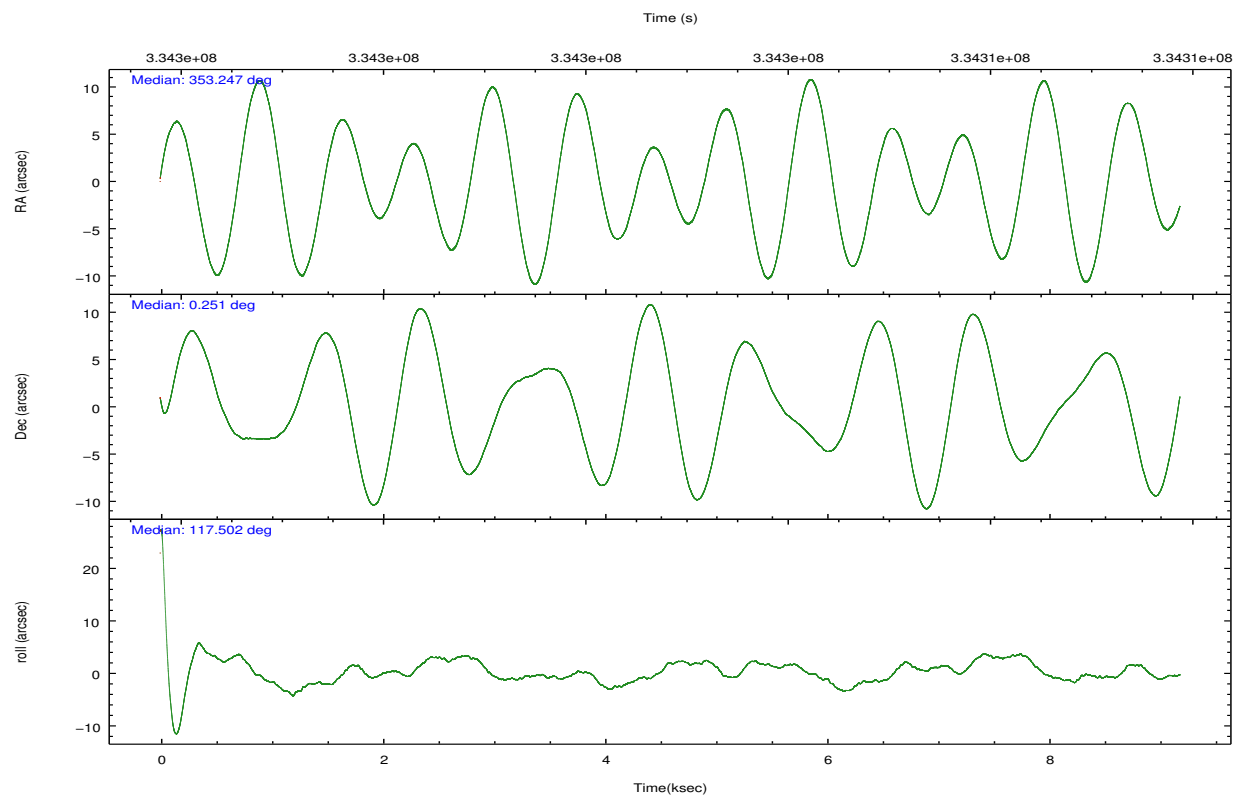


## 2.2 Compared Parameters

Parameter	Planned	Actual	Parameter	Planned	Actual
Instrument	ACIS	ACIS	Obspar format version number	7	7
Detector	ACIS-01236	ACIS-01236	Obspar file type	PREDICTED	ACTUAL
Grating	NONE	NONE	Obspar update status	NONE	UPDATED
Data mode	VFAINT	VFAINT	CCD I0 on	Y	Y
Observation mode	POINTING	POINTING	CCD I1 on	Y	Y
[deg] Pointing RA	353.270365	353.2471045021375	CCD I2 on	Y	Y
[deg] Pointing Dec	0.236736	0.2514051609724547	CCD I3 on	Y	Y
[deg] Pointing Roll	117.299935	117.5087749834377	CCD S0 on	N	N
[mm] SIM focus pos	-0.782348	-0.7809083437167272	CCD S1 on	N	N
[mm] SIM defocus	0	0.001439871863259334	CCD S2 on	O1	Y
[mm] SIM translation stage pos	-233.592463	-233.5874344608287	CCD S3 on	N	N
[mm] SIM translation stage offset	0	-0.005018542100998502	CCD S4 on	N	N
[s] Observation start time (MET)	334298411.184000	334297200.30444	CCD S5 on	N	N
Observation start date	2008-08-05T04:39:06	2008-08-05T04:20:00	Number of optional ACIS chips dropped	0	0
[s] Observation end time (MET)	334307411.184000	334307545.11745	On-chip summing requested	N	N
Observation end date	2008-08-05T07:09:06	2008-08-05T07:12:25	Subarray requested	NONE	NONE
Read mode	TIMED	TIMED	Alternating exposures requested	N	N
			[s] Primary exposure time	0.000000	3.1

## 2.3 Aspect



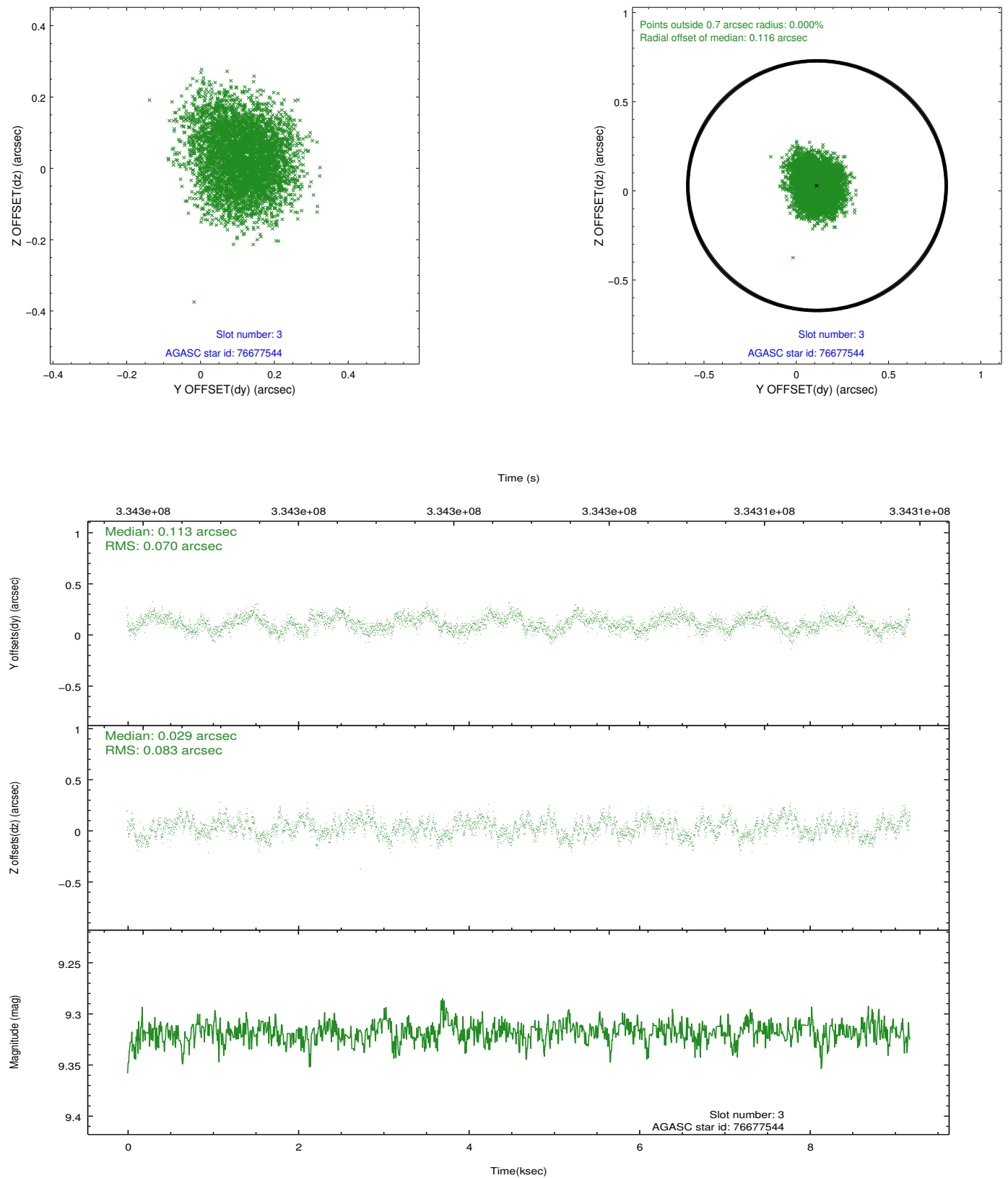


### Slot Statistics

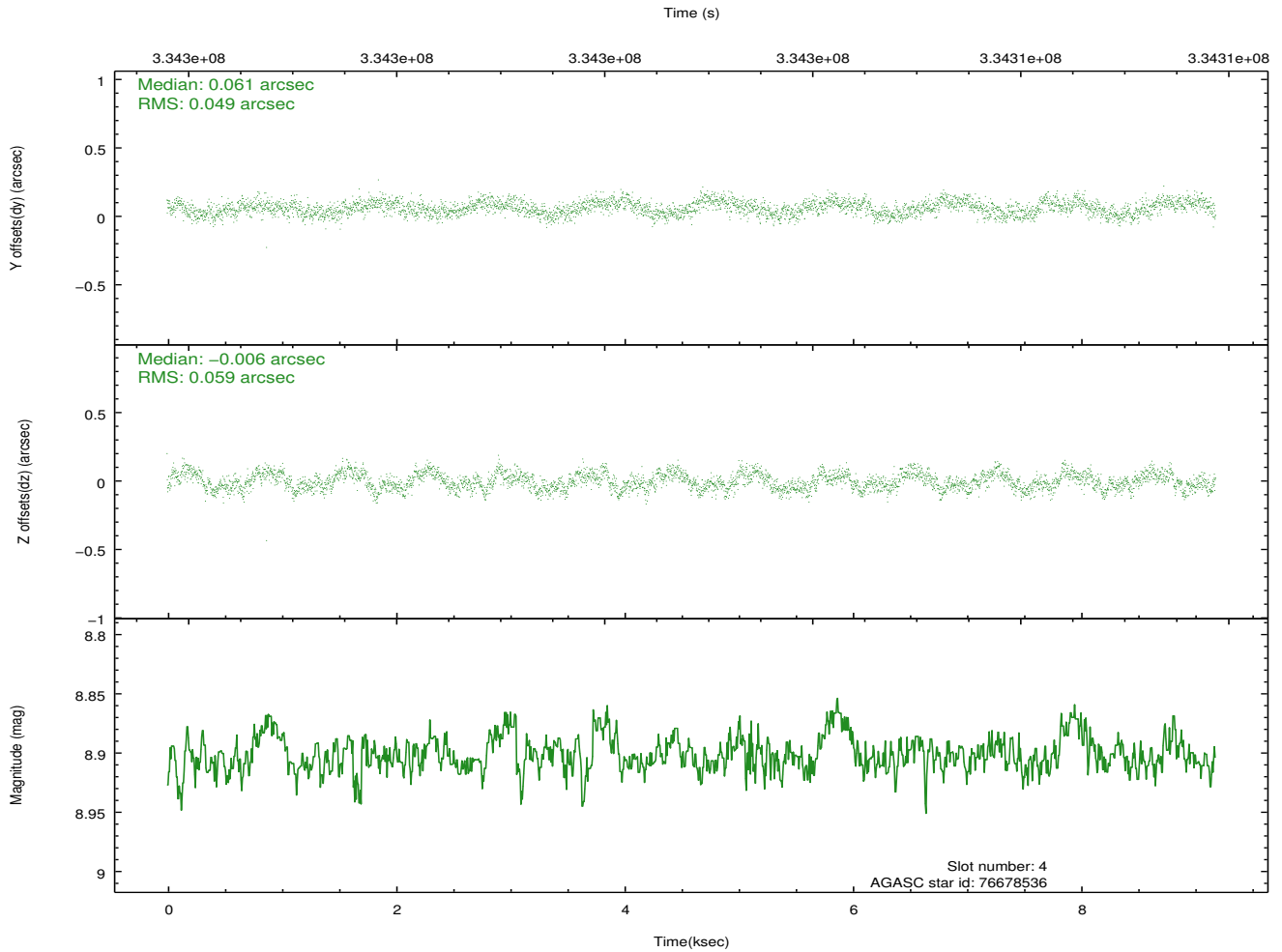
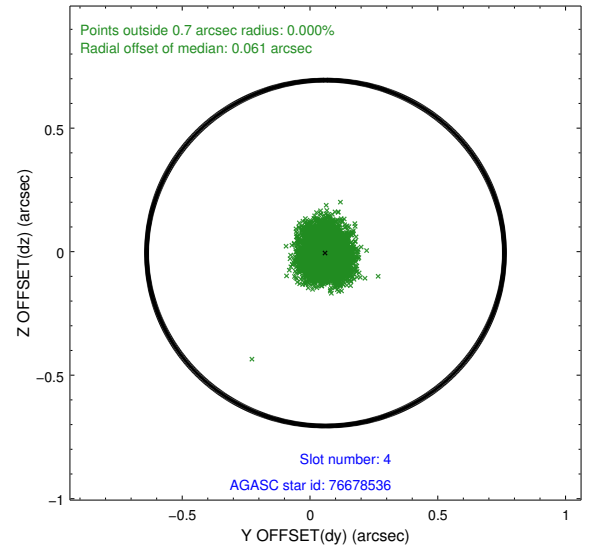
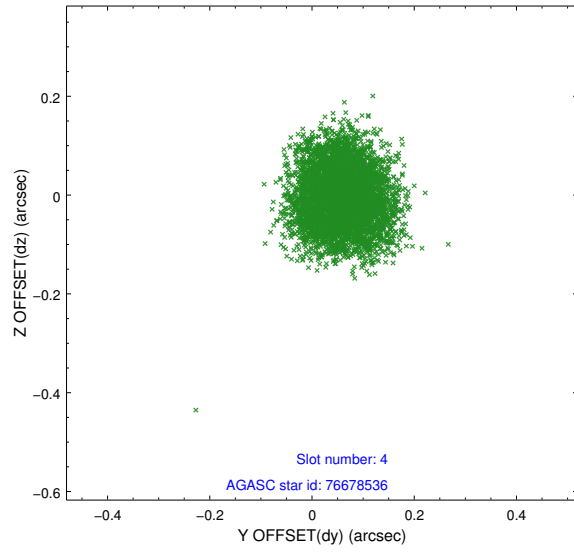
slot	status	id	mag	n_pts	med_dy	med_dz	dr1	dr2	ra	dec	mean_y	mean_z
0	FID	ACIS-I-1	7.01	2241	-0.055	0.084	0.008	0.013	0.000000	0.000000	927.96	-836.99
1	FID	ACIS-I-2	6.92	2241	-0.119	-0.077	0.006	0.010	0.000000	0.000000	-765.86	-843.89
2	FID	ACIS-I-4	6.94	2241	0.076	0.060	0.006	0.010	0.000000	0.000000	2147.71	1062.48
3	GUIDE	76677544	9.32	4474	0.113	0.029	0.117	0.182	353.780973	0.190917	-989.02	-1557.79
4	GUIDE	76678536	8.90	4477	0.061	-0.006	0.083	0.127	353.237558	0.180446	-125.91	197.46
5	GUIDE	76683080	9.88	4474	-0.258	0.019	0.106	0.174	353.475595	0.556305	683.66	-1183.94
6	GUIDE	76685264	9.73	4478	0.031	0.071	0.120	0.192	353.301878	0.237362	-49.48	-101.95
7	GUIDE	688261136	9.79	4474	0.055	-0.118	0.123	0.197	353.219994	-0.402546	-1961.68	1216.45

## 2.4 Star Slots

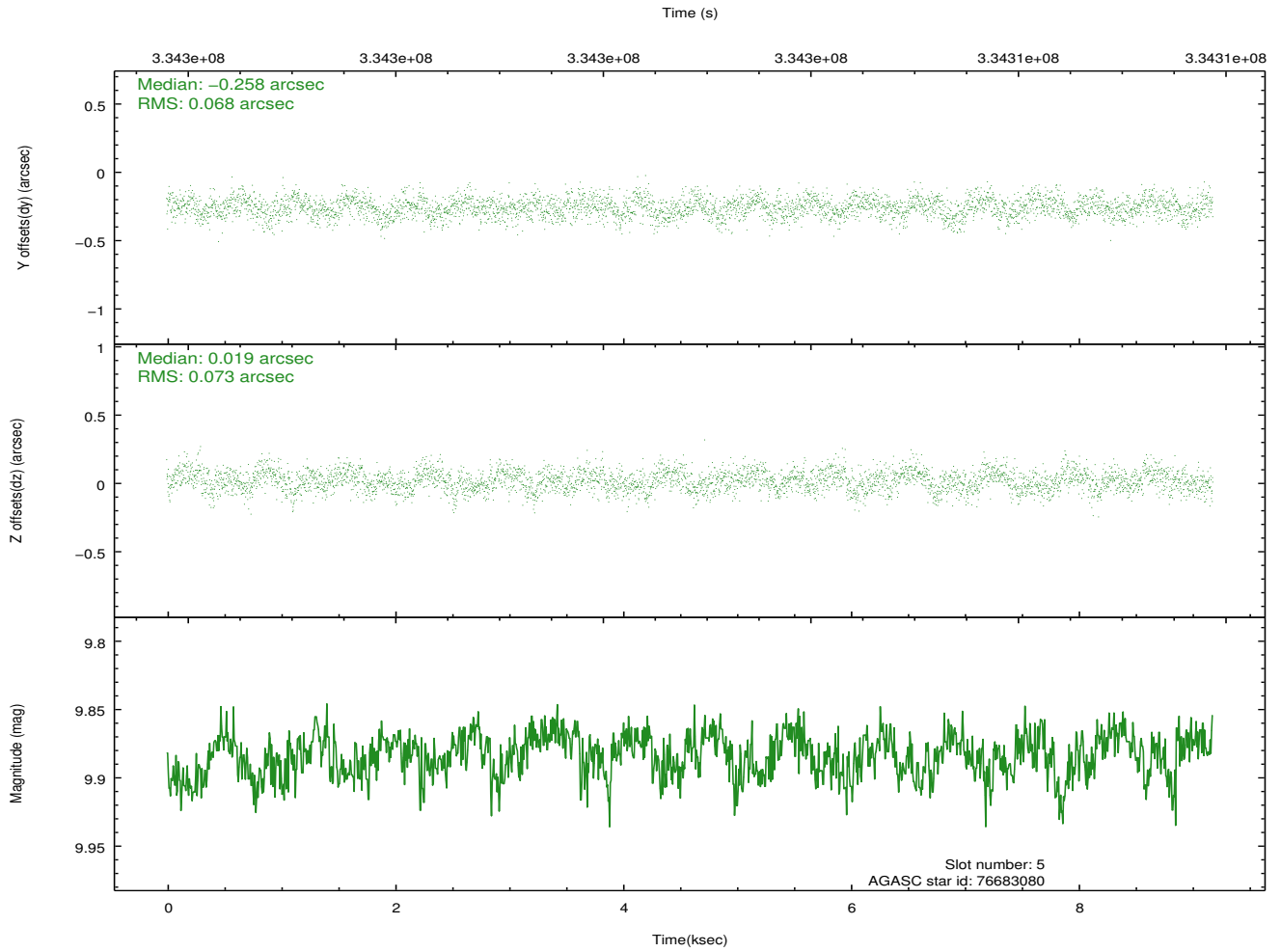
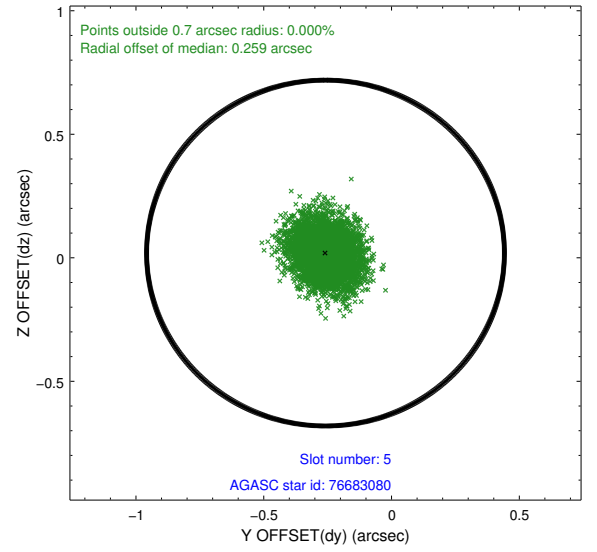
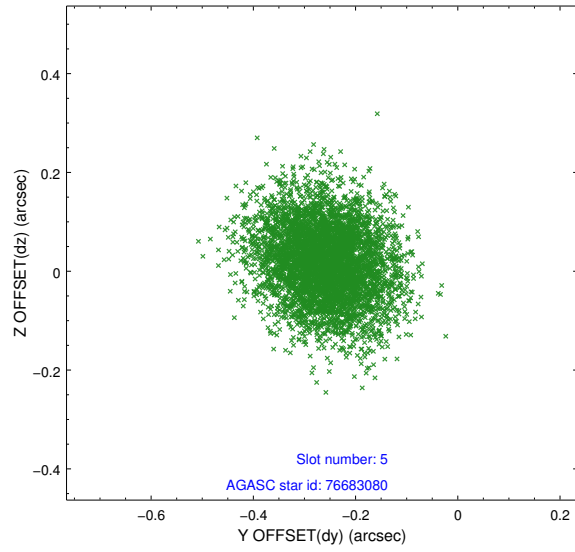
### 2.4.1 Slot 3



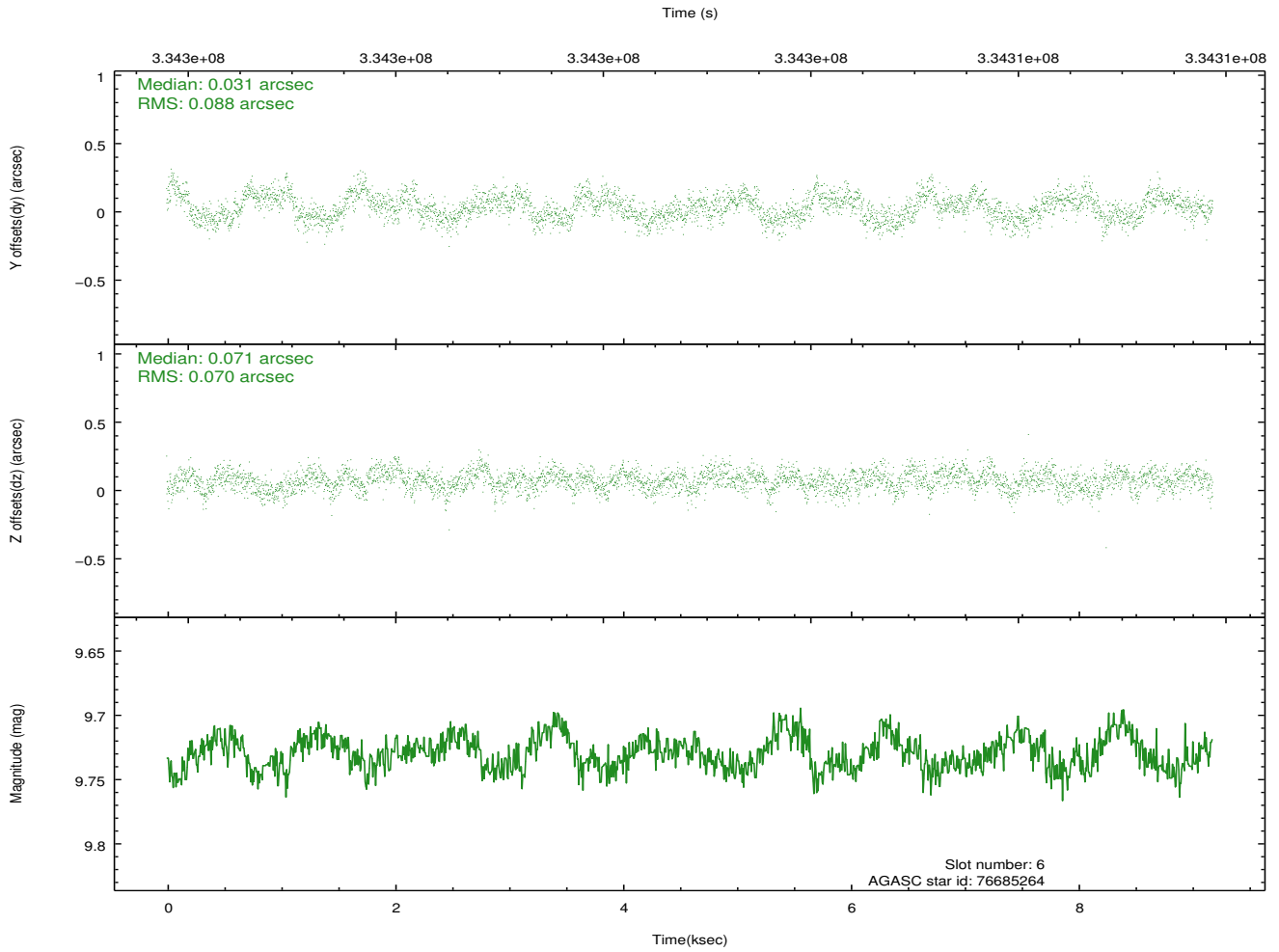
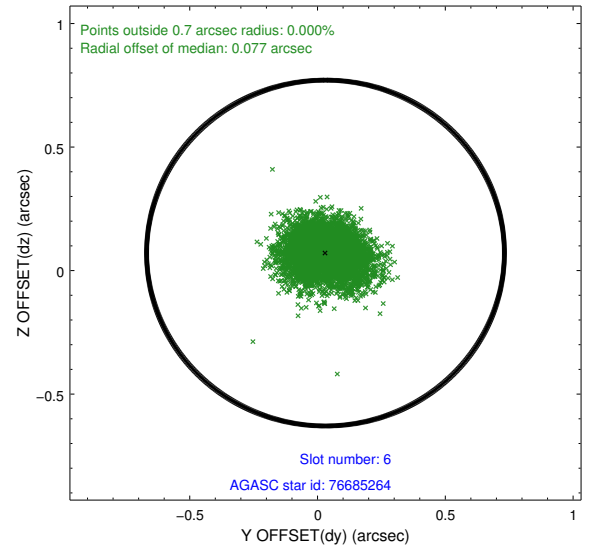
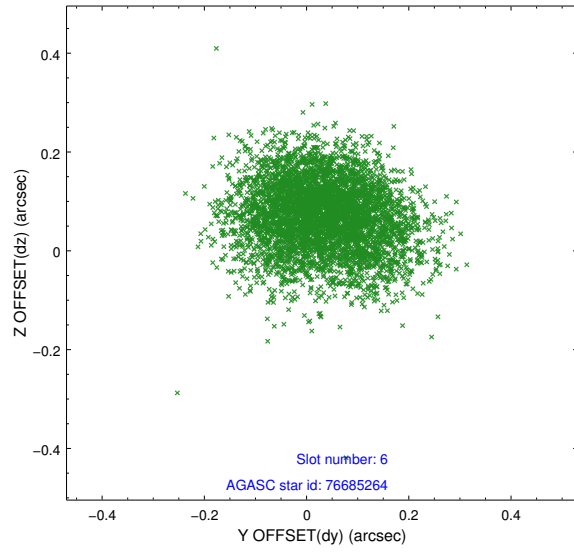
## 2.4.2 Slot 4



### 2.4.3 Slot 5

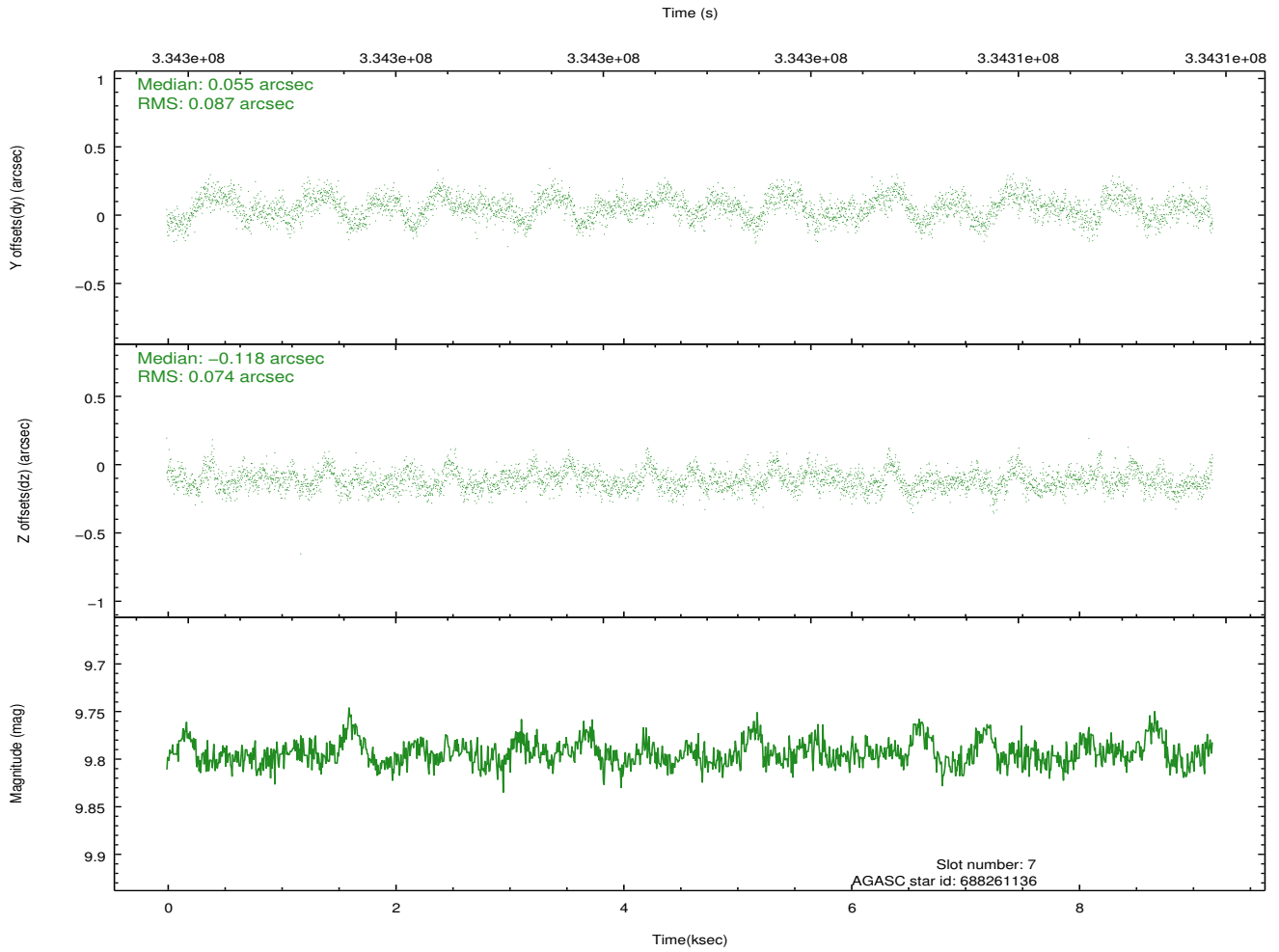
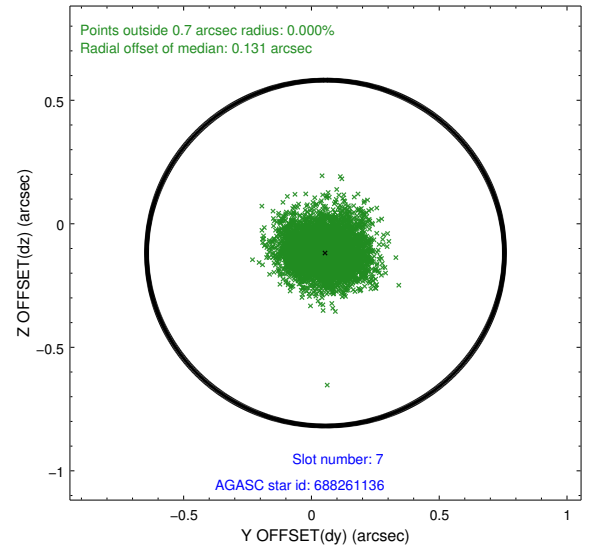
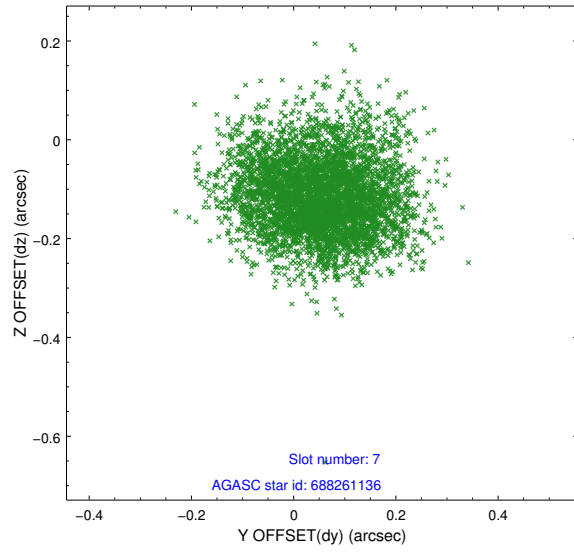


## 2.4.4 Slot 6



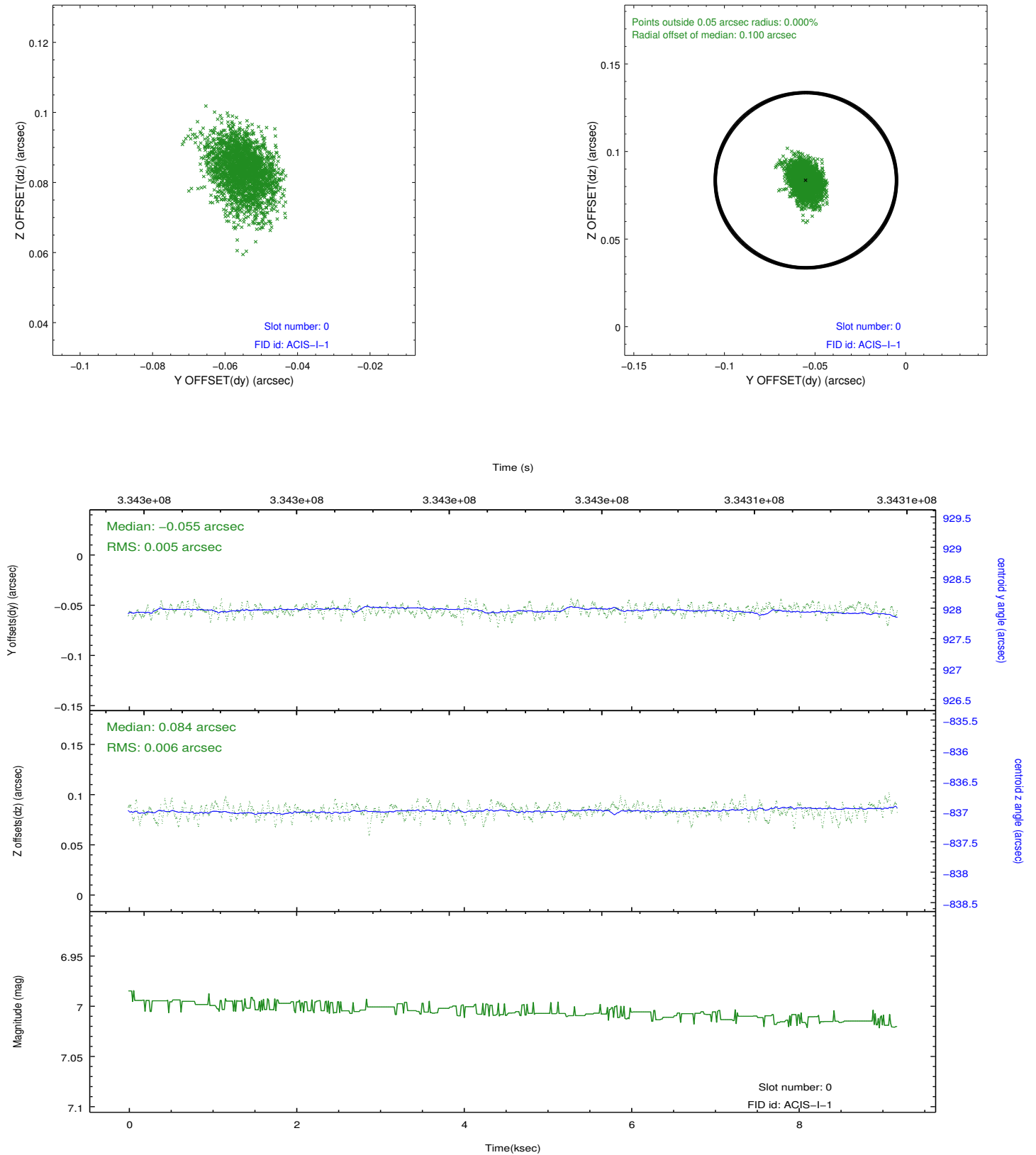


## 2.4.5 Slot 7

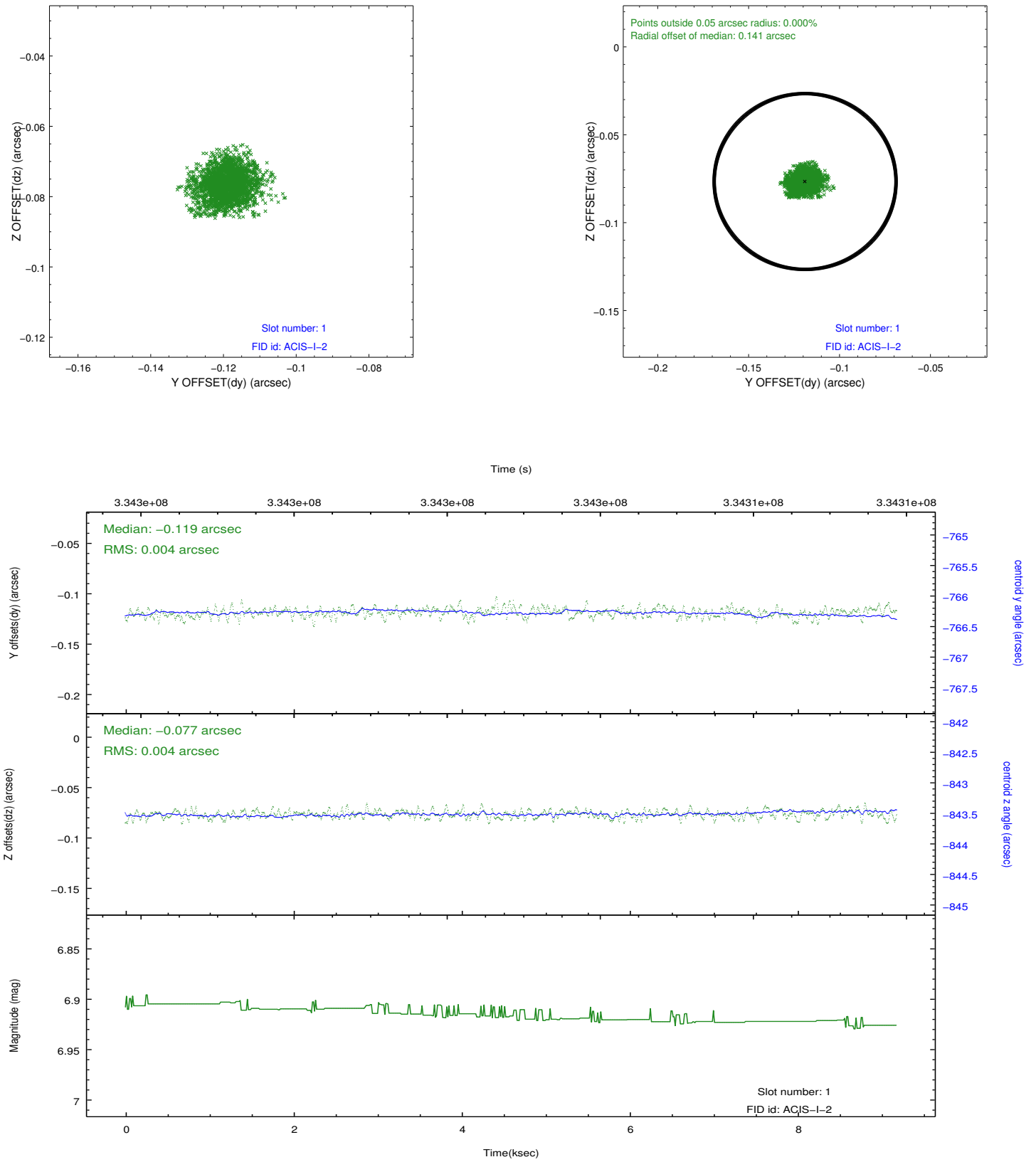


## 2.5 FID Slots

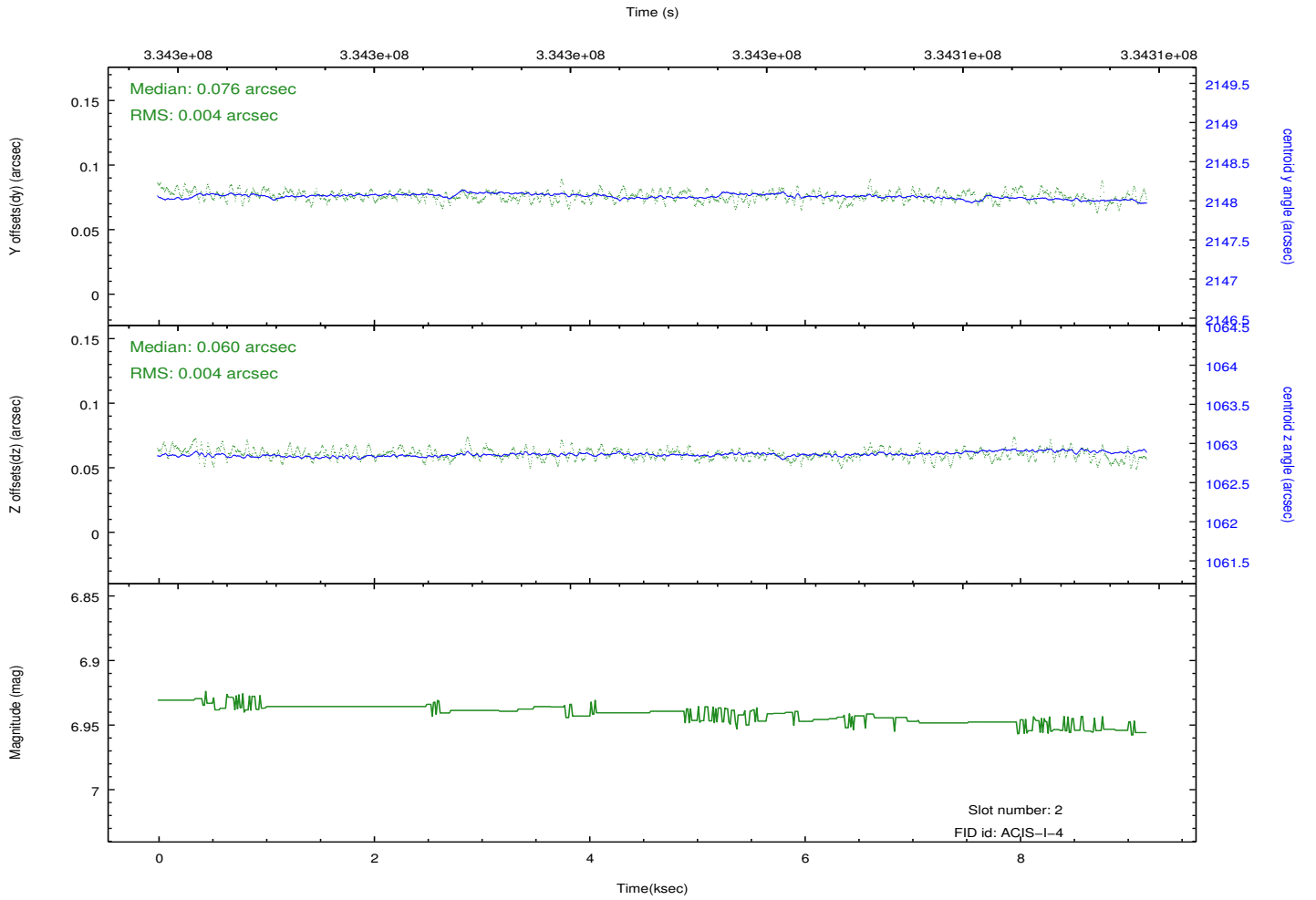
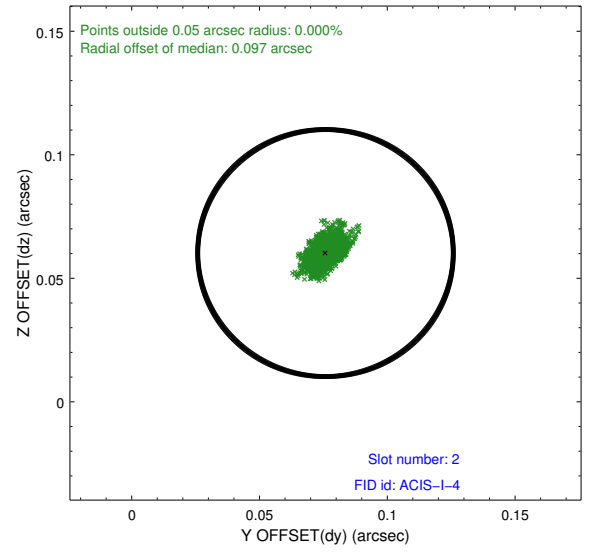
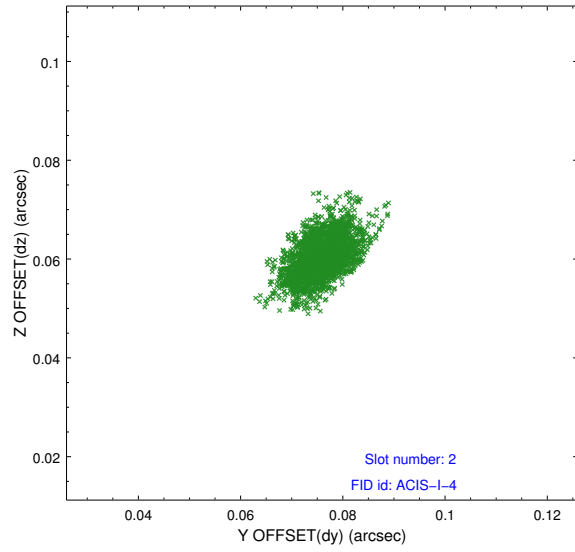
### 2.5.1 Slot 0



## 2.5.2 Slot 1



### 2.5.3 Slot 2



## A Summary

### A.1 Status

V&V Scientist	Beth Sundheim
V&V Date (YYYY-MM-DD)	2012.05.27
V&V Edition	1
V&V Disposition and Status	OK
V&V Charge Time	9.17905907

### A.2 Comments