

# V&V Reference Report

## L2 ASCDS Version : 8.4.4

Observation 8351 - L2 Version 5  
Chandra X-Ray Center

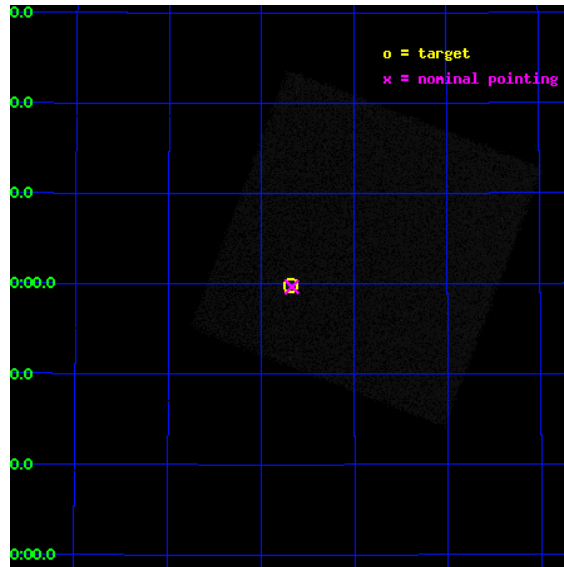
L2 Processing Date : Aug 11 2012

## Contents

<b>1</b>	<b>Front</b>	<b>2</b>
<b>2</b>	<b>OBI</b>	<b>3</b>
2.1	OBI . . . . .	3
2.1.1	Images . . . . .	3
2.1.2	Parameters . . . . .	4
2.1.3	Events . . . . .	4
2.2	Compared Parameters . . . . .	5
2.3	Aspect . . . . .	6
2.4	Star Slots . . . . .	9
2.4.1	Slot 3 . . . . .	9
2.4.2	Slot 4 . . . . .	10
2.4.3	Slot 5 . . . . .	11
2.4.4	Slot 6 . . . . .	12
2.4.5	Slot 7 . . . . .	13
2.5	FID Slots . . . . .	14
2.5.1	Slot 0 . . . . .	14
2.5.2	Slot 1 . . . . .	15
2.5.3	Slot 2 . . . . .	16
<b>A</b>	<b>Summary</b>	<b>17</b>
A.1	Status . . . . .	17
A.2	Comments . . . . .	17

# 1 Front

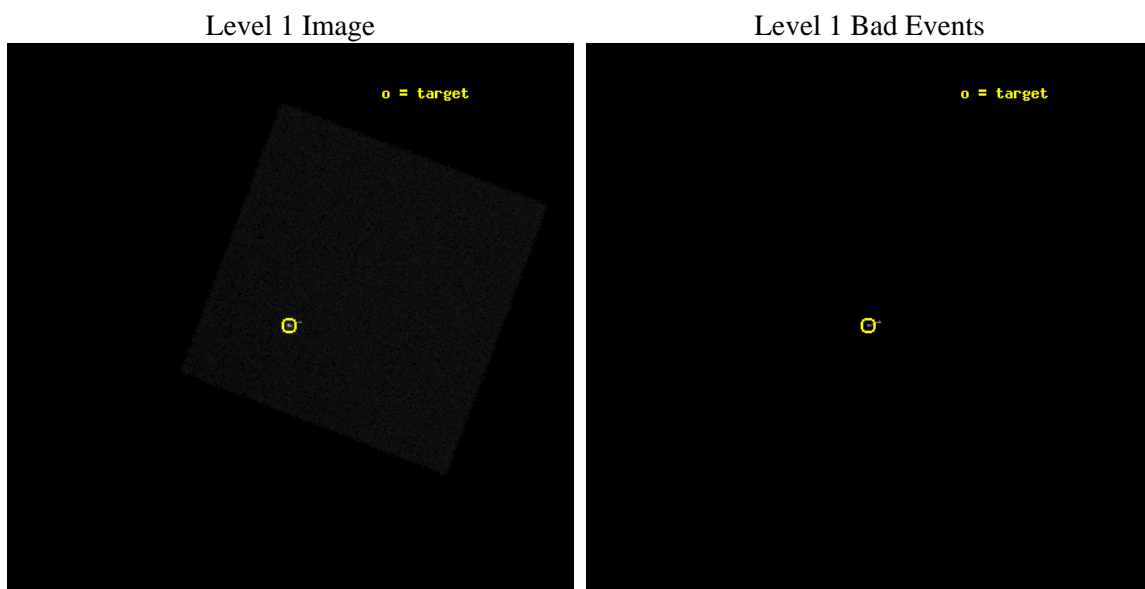
seq_num	290730	Sequence number
obs_id	8351	Observation id
title	Improving the De-Gap Corrections for the HRC-I	Proposal title
observer	Dr. CXC Calibration	Principal investigator
object	Capella	Source name
ra_targ	79.1725	Observer's specified target RA [deg]
dec_targ	45.998	Observer's specified target Dec [deg]
ra_nom	79.167951204068	Nominal RA [deg]
dec_nom	45.994906446922	Nominal Dec [deg]
roll_nom	245.78062852861	Nominal Roll [deg]
revision	5	Processing version of data
ontime	5183.6814957261	[s]
livetime	5129.797259358	Ontime multiplied by DTCOR
l2events	364972	Number of level 2 events



## 2 OBI

### 2.1 OBI

#### 2.1.1 Images



### 2.1.2 Parameters

obi_num	0	Obi number	sched_exp_time	5000.000000	[s] Scheduled observation exposure time
ascdsver	8.4.5	Processing system revision	ontime	5183.6814957261	[s]
caldbver	4.5.1.1	&#160	l1events	525162	Number of level 1 events
date	2012-08-11T16:58:01	Date and time of file creation			
revision	5	Processing version of data			

### 2.1.3 Events

#### Level 1 Events

	<b>segment 0</b>
level 1 events	525162
rejected events	30877
rejected %	5%

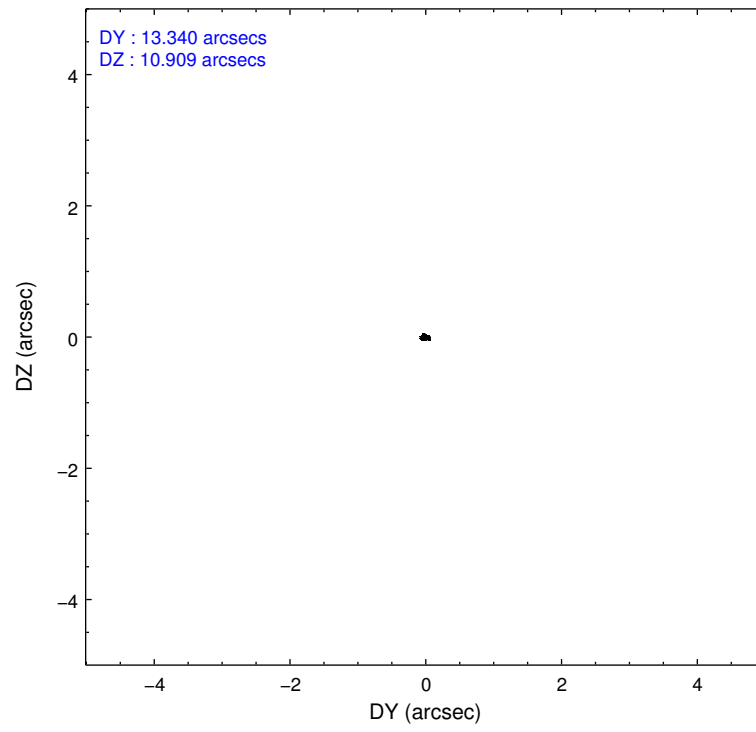
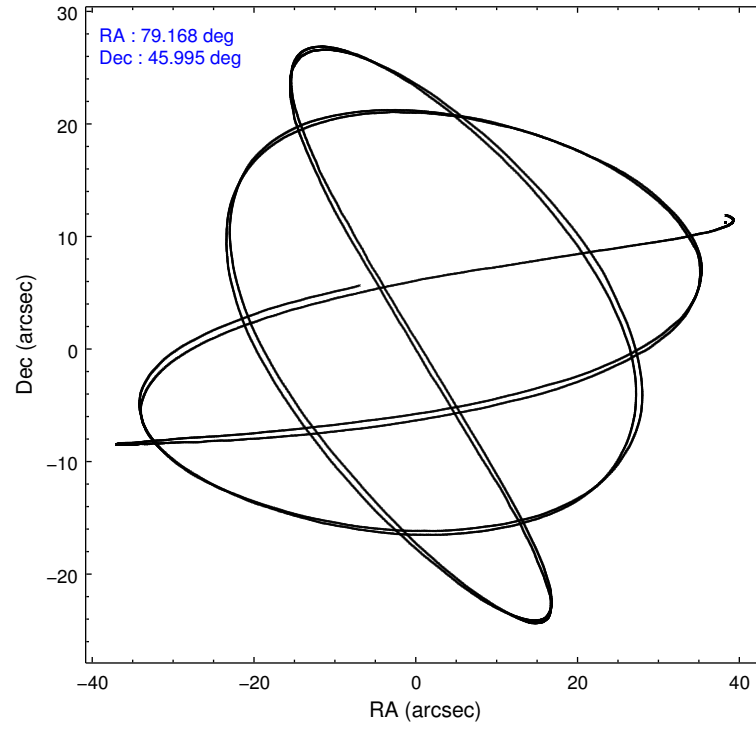


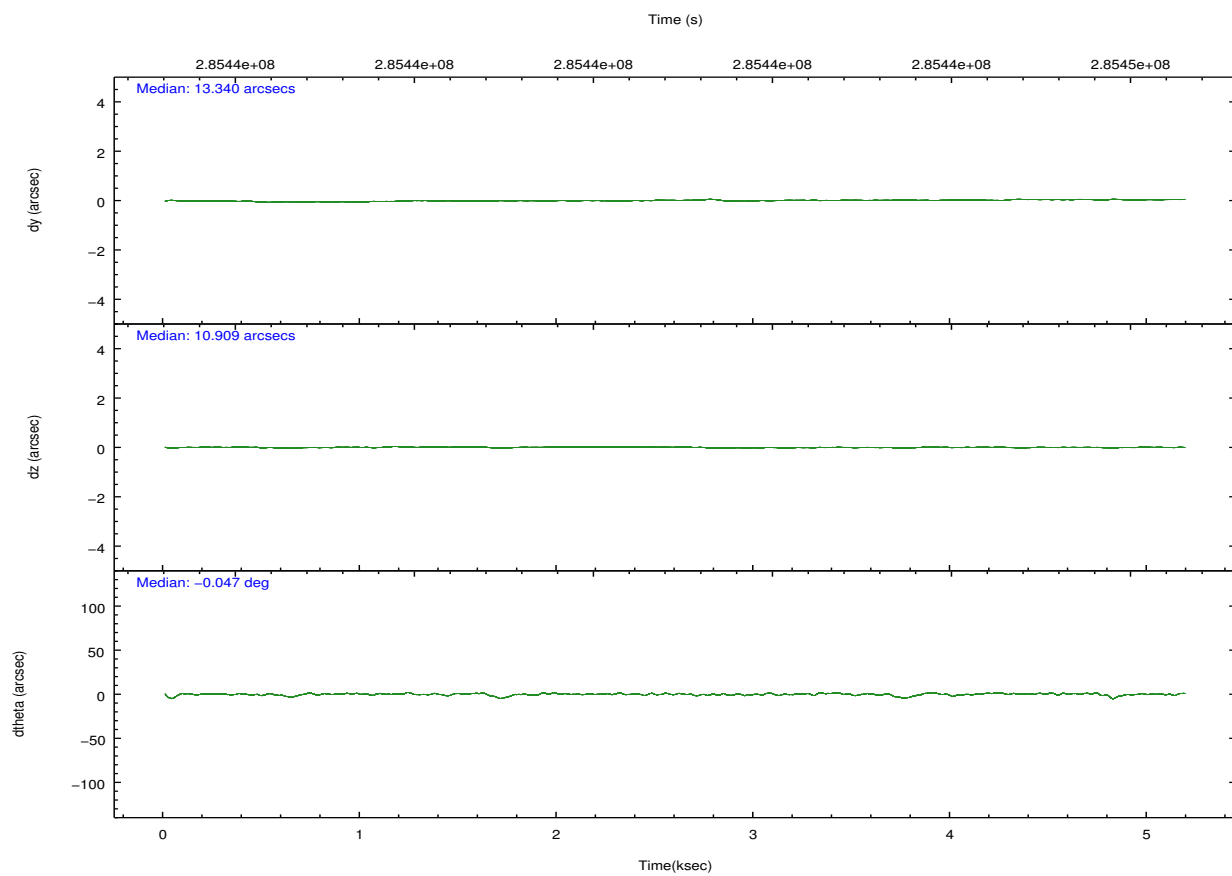
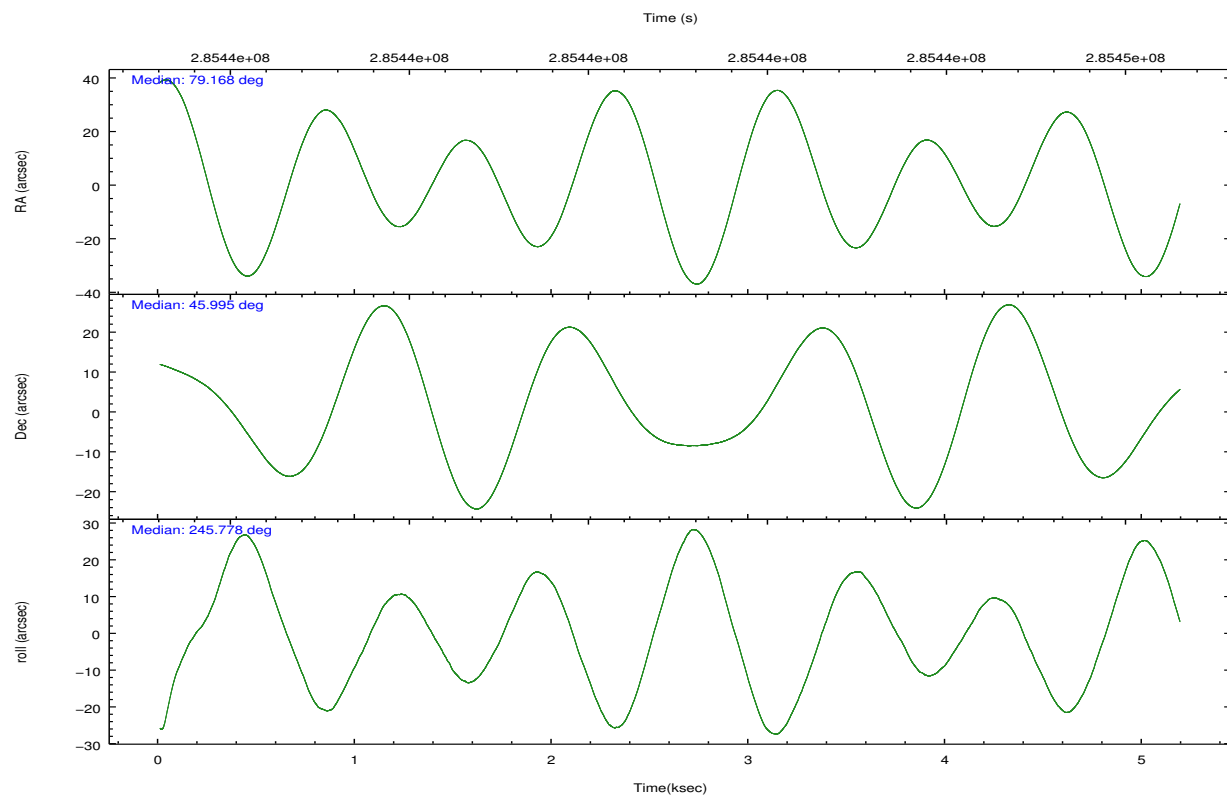
## 2.2 Compared Parameters

Parameter	Planned	Actual
Instrument	HRC	HRC
Detector	HRC-I	HRC-I
Grating	NONE	NONE
Data mode	OBSERVING	OBSERVING
Observation mode	POINTING	POINTING
[deg] Pointing RA	79.163282	79.16795120406843
[deg] Pointing Dec	46.022049	45.99490644692153
[deg] Pointing Roll	245.879468	245.7806285286075
[mm] SIM focus pos	-1.040293	-1.038866356238299
[mm] SIM defocus	0	0.001426264420575141
[mm] SIM translation stage pos	153.985494	153.9992979052485
[mm] SIM translation stage offset	-27	-27.01380901364689
[s] Observation start time (MET)	285441062.184000	285440686.211
Observation start date	2007-01-17T17:09:57	2007-01-17T17:04:46
[s] Observation end time (MET)	285446062.184000	285446196.09876
Observation end date	2007-01-17T18:33:17	2007-01-17T18:36:36

Parameter	Planned	Actual
Obspar format version number	7	7
Obspar file type	PREDICTED	ACTUAL
Obspar update status	NONE	UPDATED

## 2.3 Aspect



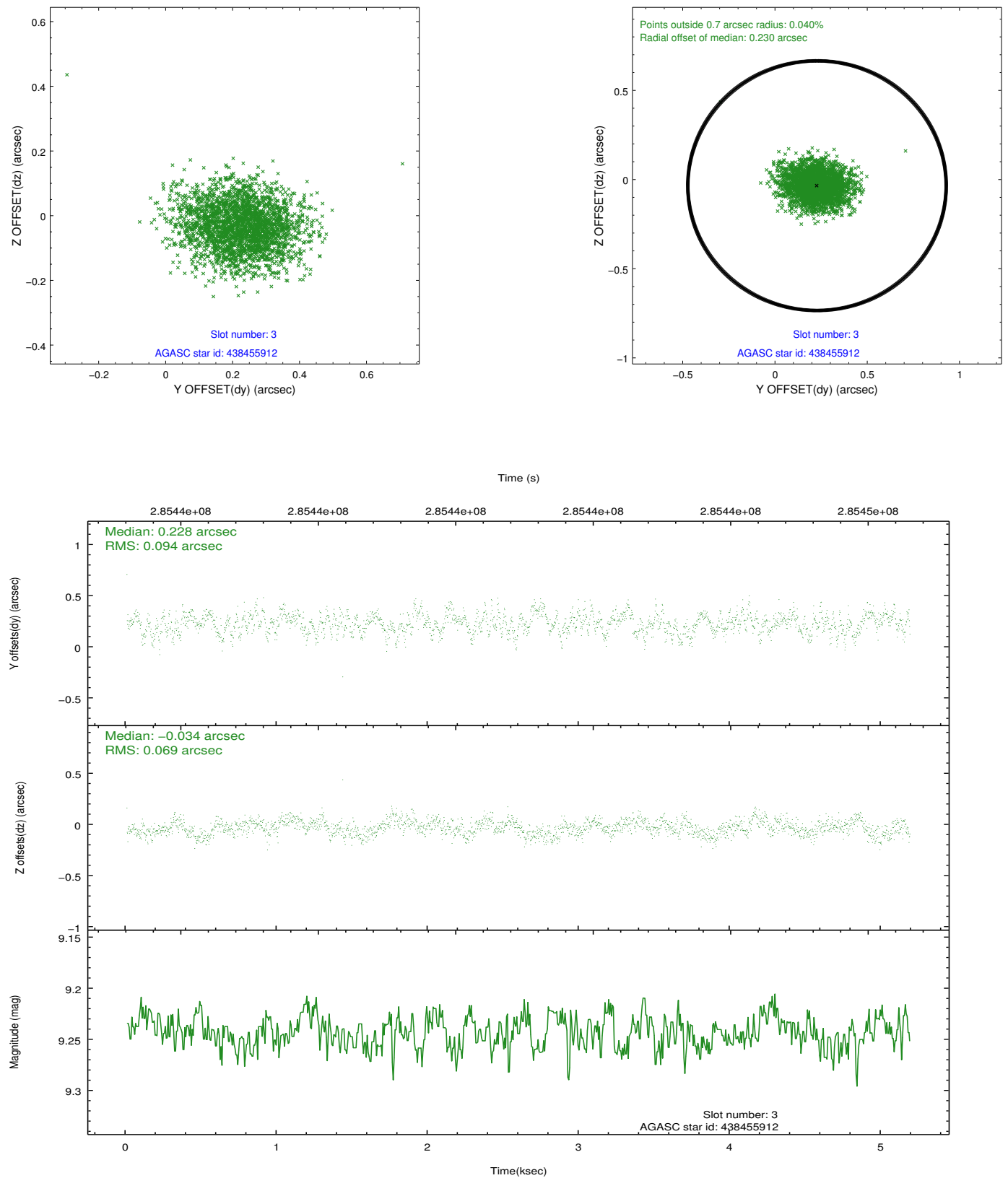


### Slot Statistics

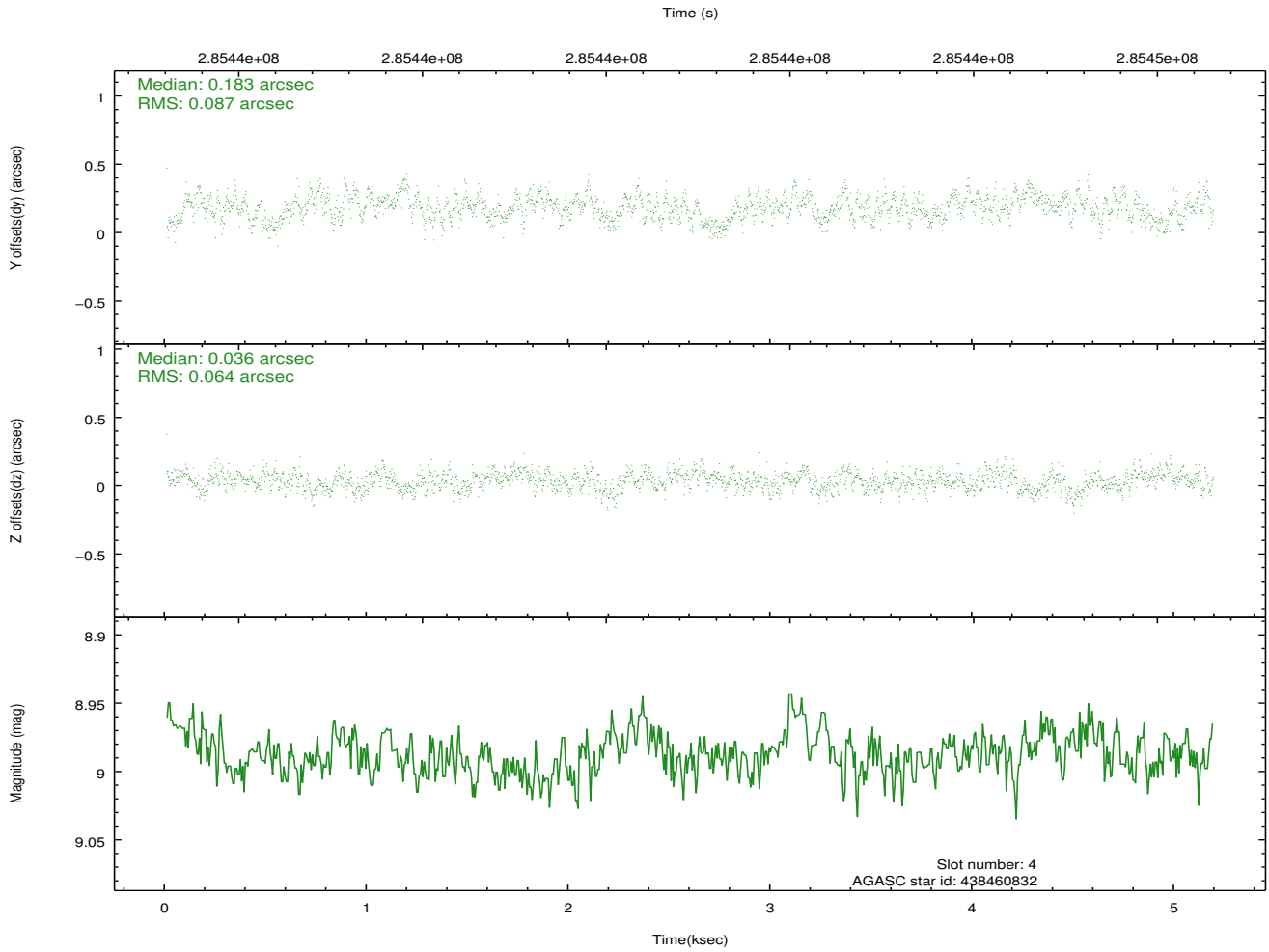
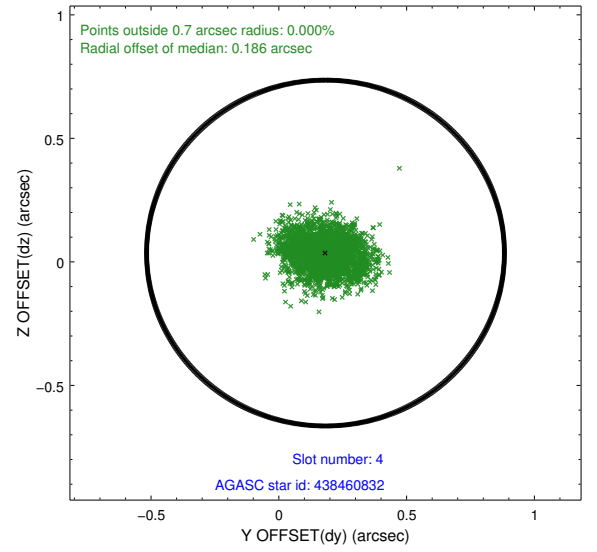
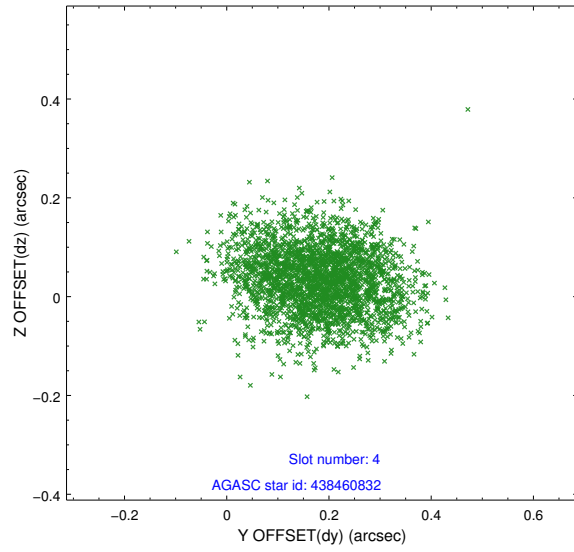
slot	status	id	mag	n_pts	med_dy	med_dz	dr1	dr2	ra	dec	mean_y	mean_z
0	FID	HRC-I-1	6.94	1265	-0.679	-1.430	0.008	0.024	0.000000	0.000000	-768.44	-1855.49
1	FID	HRC-I-3	7.14	1265	0.842	0.458	0.009	0.018	0.000000	0.000000	-1197.21	448.03
2	FID	HRC-I-4	6.97	1264	-0.050	0.880	0.008	0.026	0.000000	0.000000	1272.84	450.26
3	GUIDE	438455912	9.24	2528	0.228	-0.034	0.123	0.203	78.251946	45.690923	2012.75	-1609.46
4	GUIDE	438460832	8.99	2530	0.183	0.036	0.116	0.186	78.414614	45.554782	2299.51	-1038.72
5	GUIDE	440140240	9.98	2528	-0.174	0.061	0.141	0.234	78.889349	46.726437	-2038.60	-1653.90
6	GUIDE	440150048	7.14	2528	-0.209	-0.010	0.077	0.122	79.112838	46.416060	-1244.59	-694.34
7	GUIDE	440163960	8.88	2529	-0.024	-0.047	0.084	0.133	79.298370	45.827072	501.05	596.11

## 2.4 Star Slots

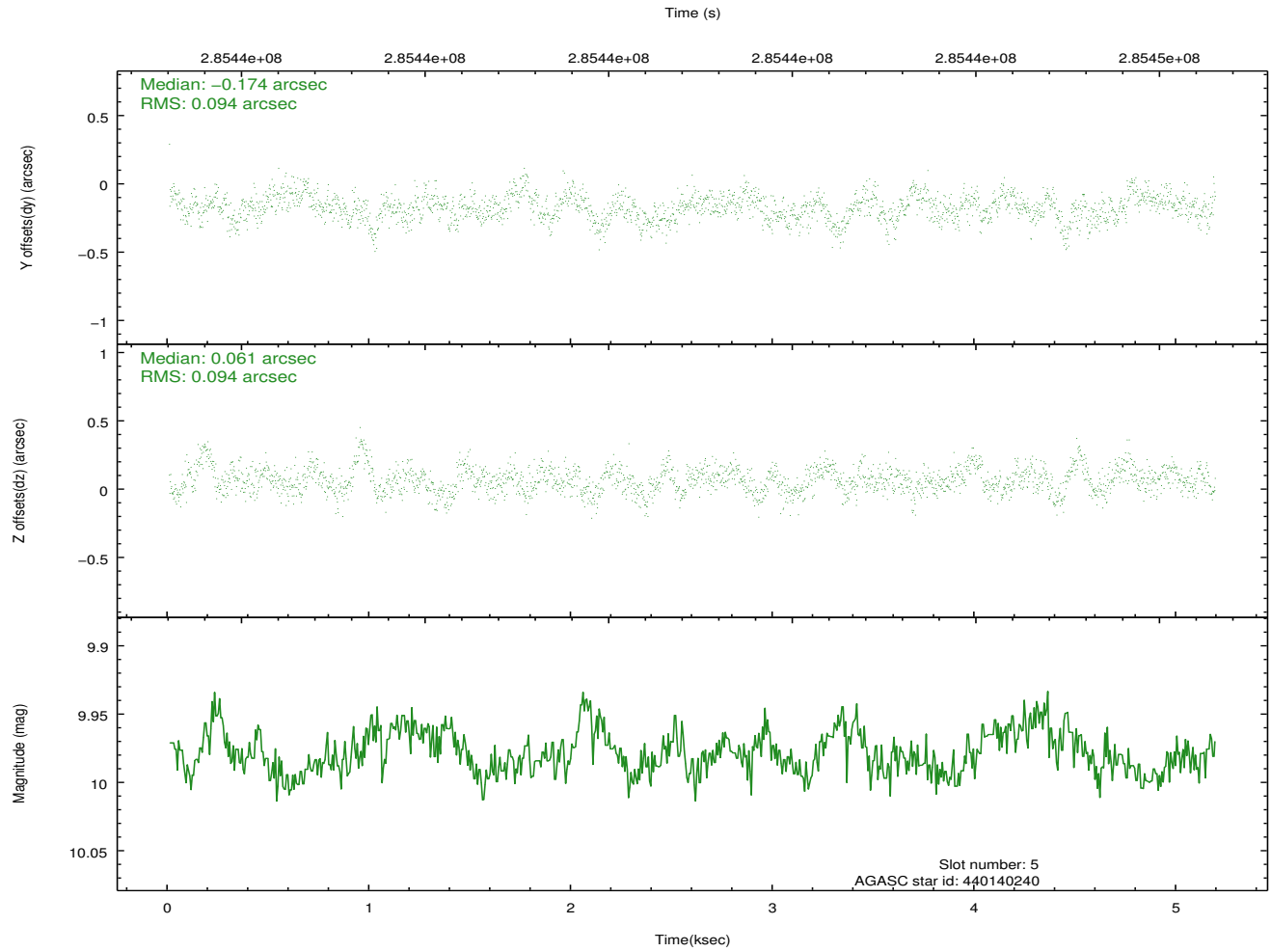
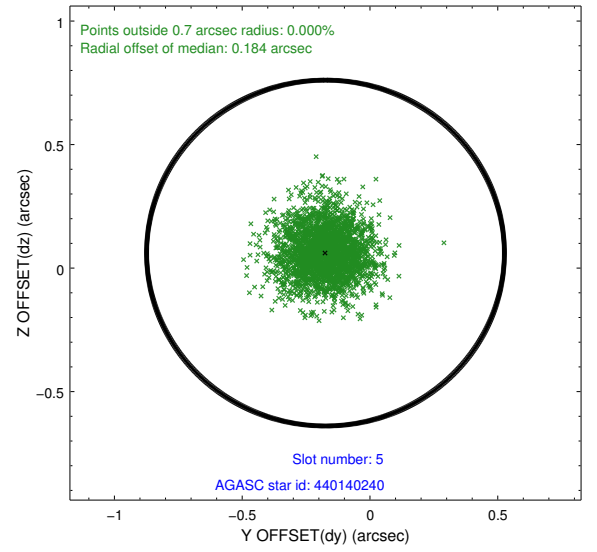
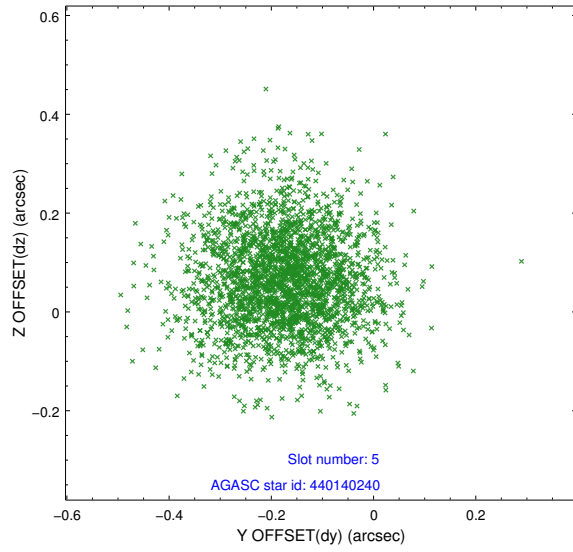
### 2.4.1 Slot 3



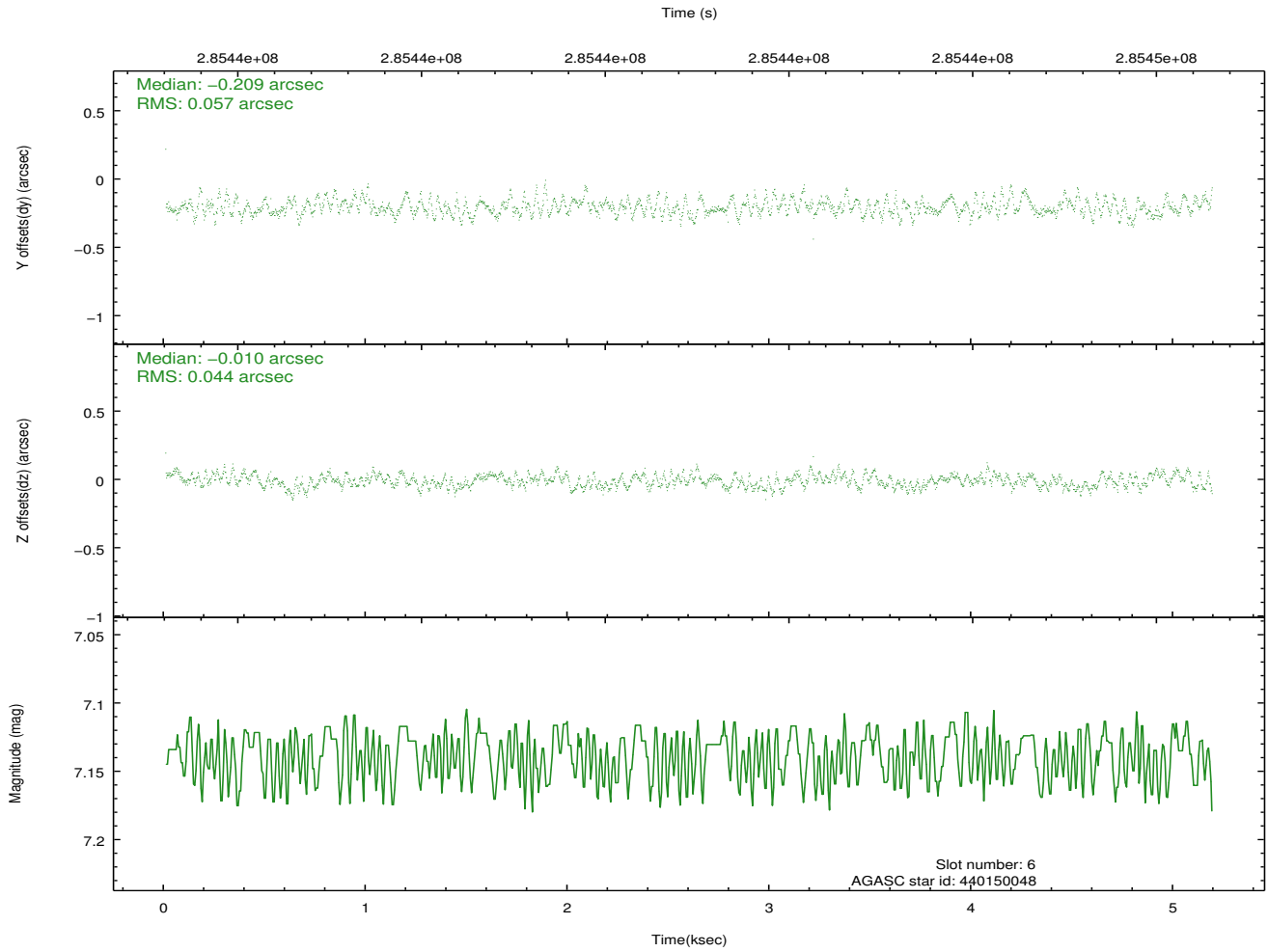
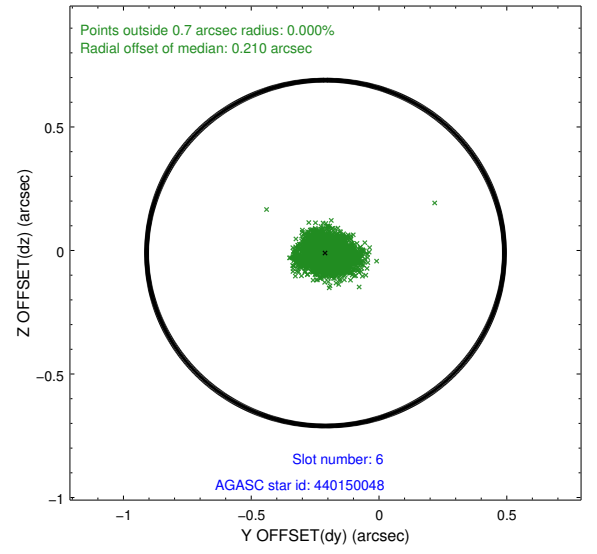
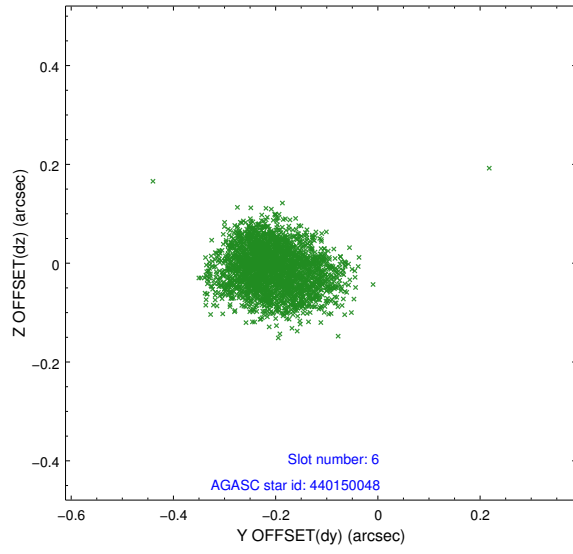
## 2.4.2 Slot 4



### 2.4.3 Slot 5

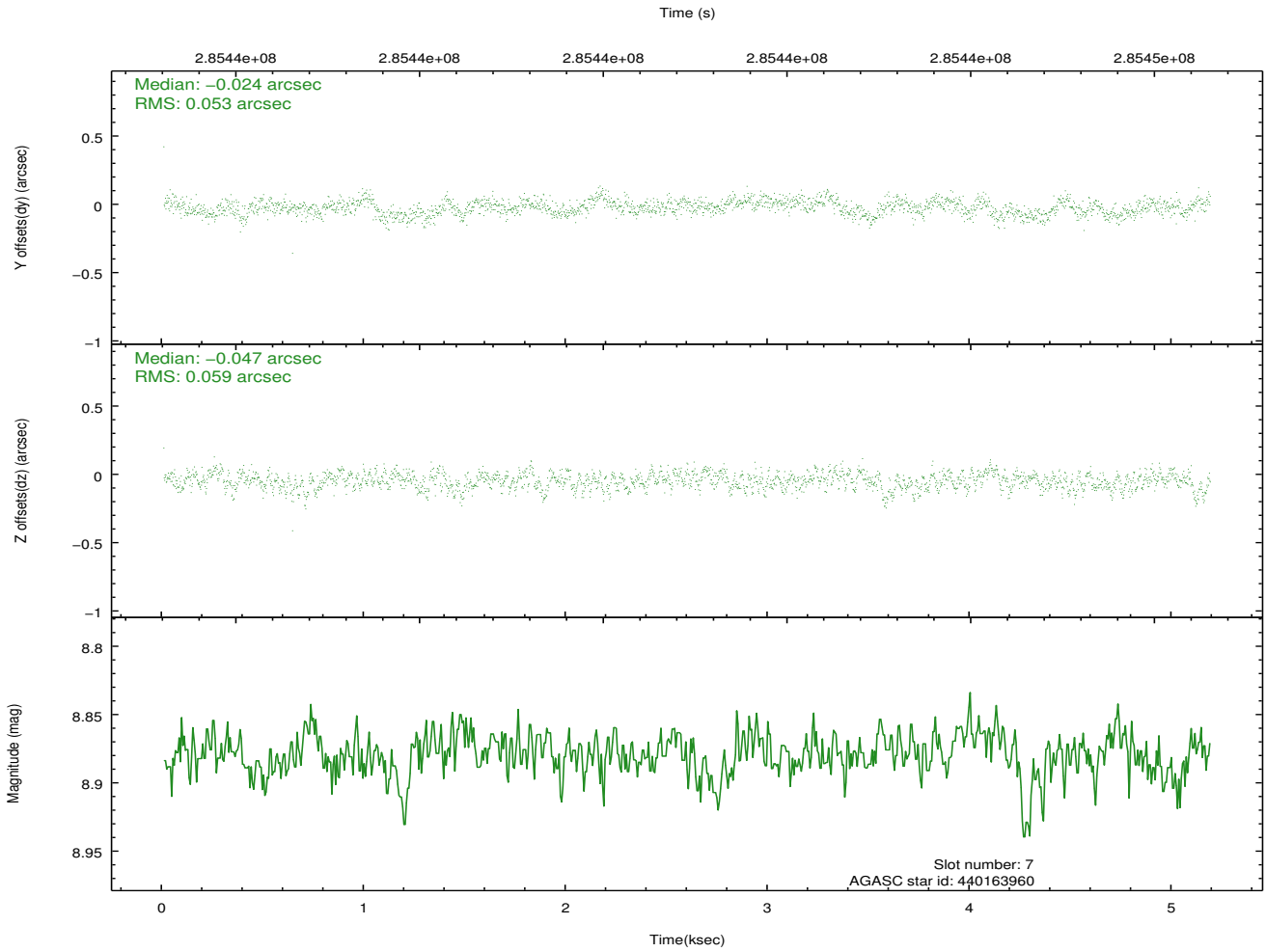
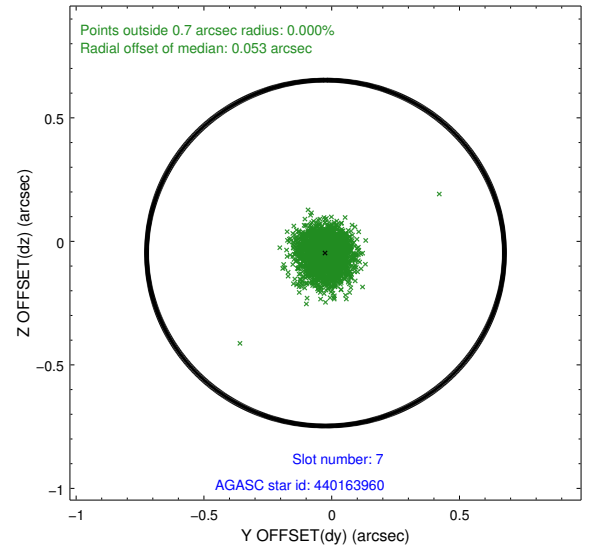
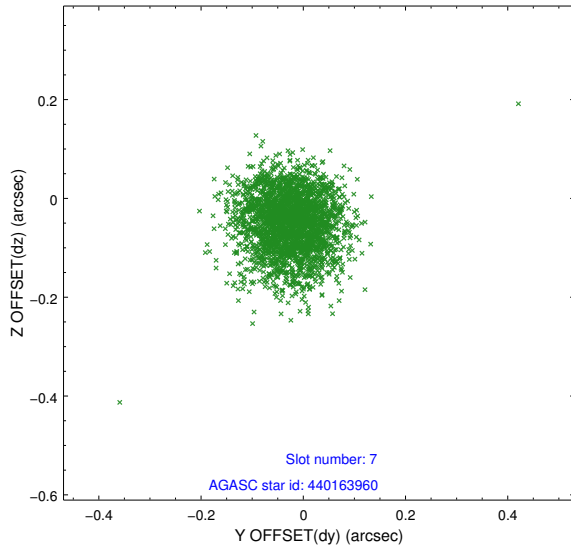


## 2.4.4 Slot 6



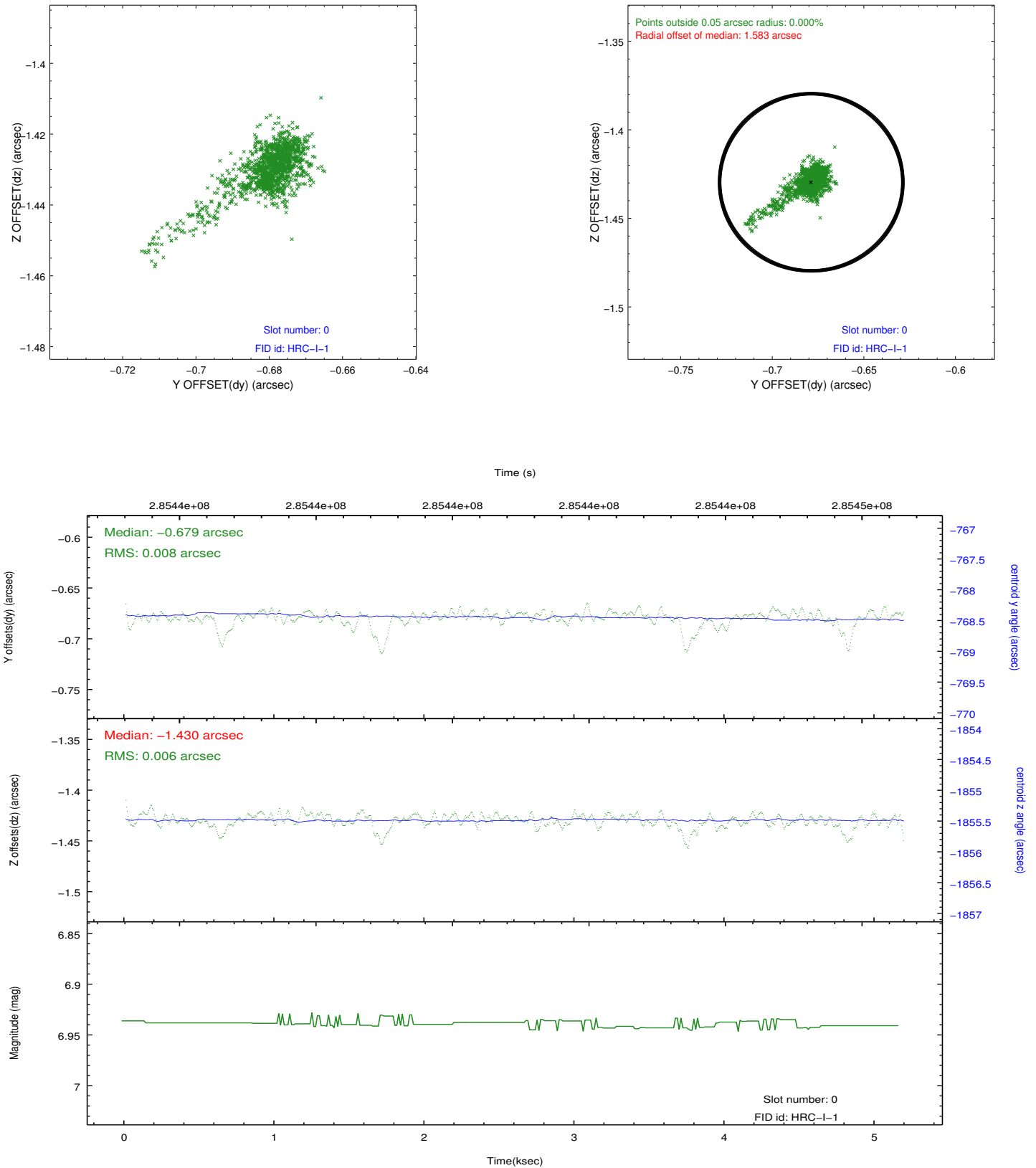


## 2.4.5 Slot 7

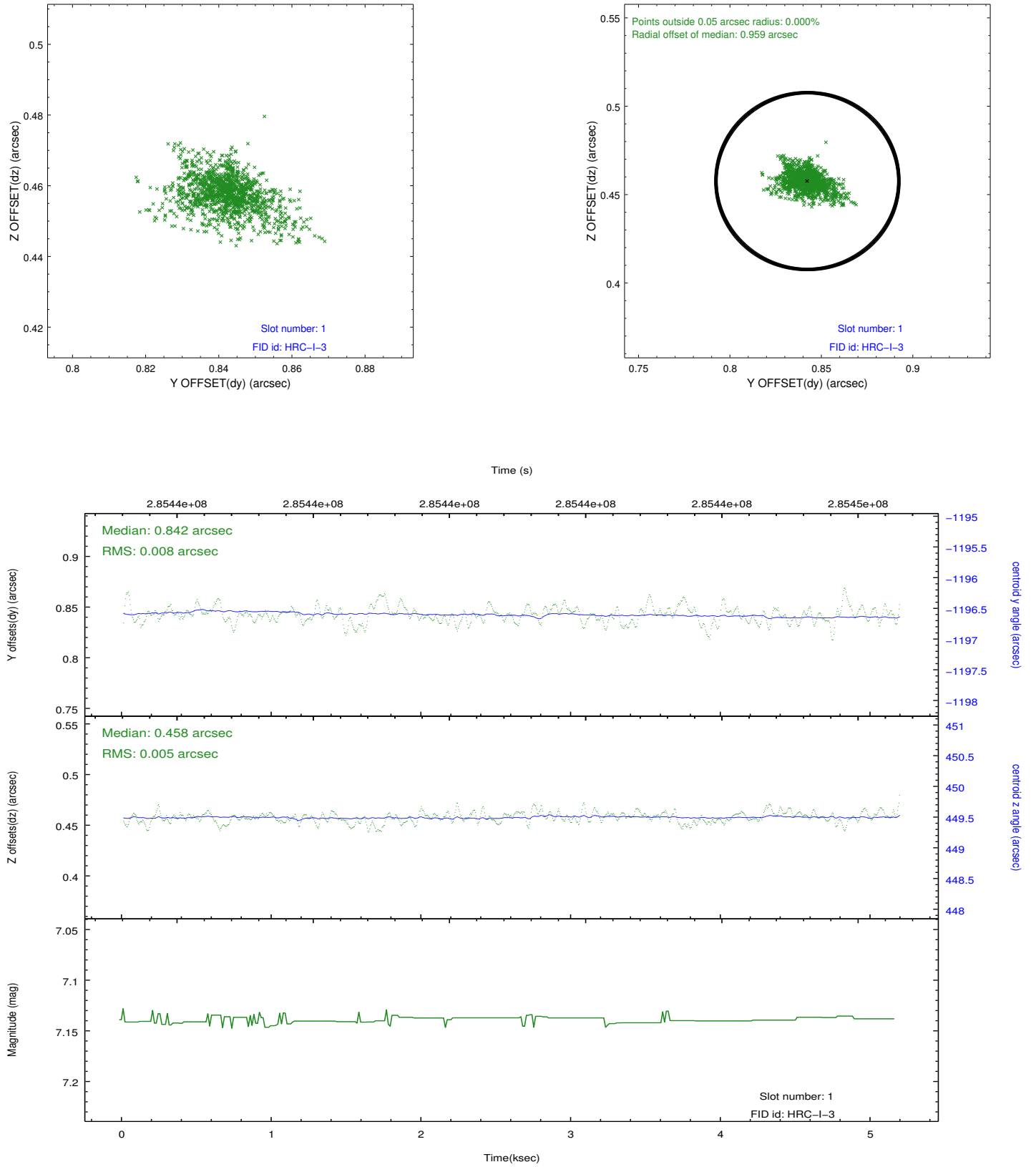


## 2.5 FID Slots

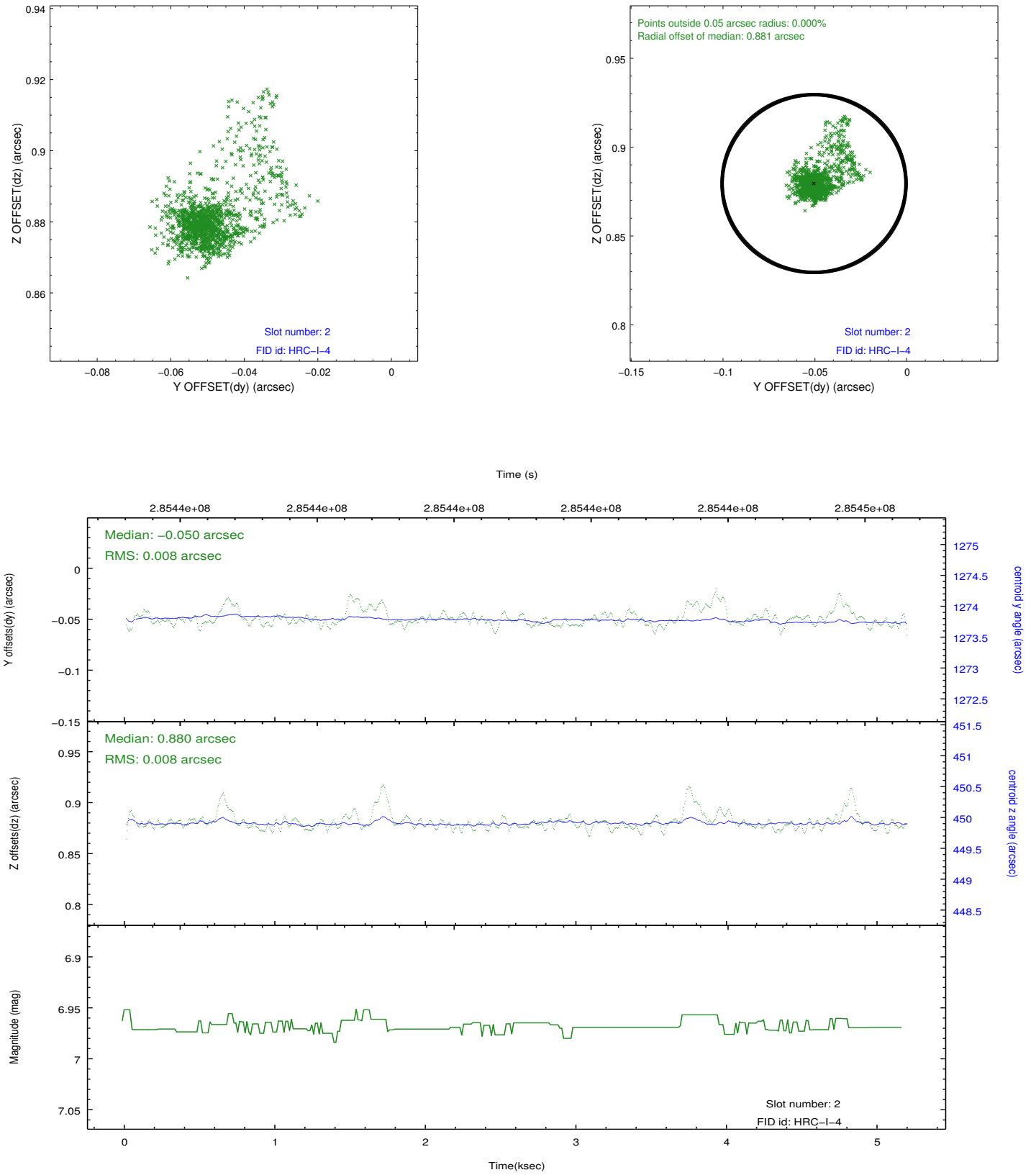
### 2.5.1 Slot 0



## 2.5.2 Slot 1



### 2.5.3 Slot 2



## A Summary

### A.1 Status

V&V Scientist	Jen Lauer
V&V Date (YYYY-MM-DD)	2012.08.14
V&V Edition	1
V&V Disposition and Status	OK
V&V Charge Time	5.18342524

### A.2 Comments

Large offsets in all three fidlights are due to the position of the target and aimpoint away from the center of the chip, and are expected in this instance.