

V&V Reference Report

L2 ASCDS Version : 8.4.5

Observation 81 - L2 Version 5
Chandra X-Ray Center

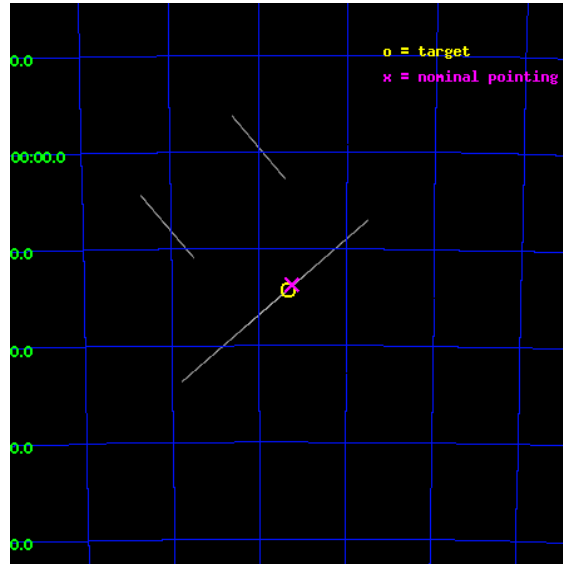
L2 Processing Date : Aug 27 2012

Contents

1	Front	2
2	OBI	3
2.1	OBI	3
2.1.1	Images	3
2.1.2	Bias	3
2.1.3	Parameters	4
2.1.4	Events	4
2.2	Compared Parameters	5
2.3	Aspect	6
2.4	Star Slots	9
2.4.1	Slot 3	9
2.4.2	Slot 4	10
2.4.3	Slot 7	11
2.5	FID Slots	12
2.5.1	Slot 0	12
2.5.2	Slot 1	13
2.5.3	Slot 2	14
A	Summary	15
A.1	Status	15
A.2	Comments	15

1 Front

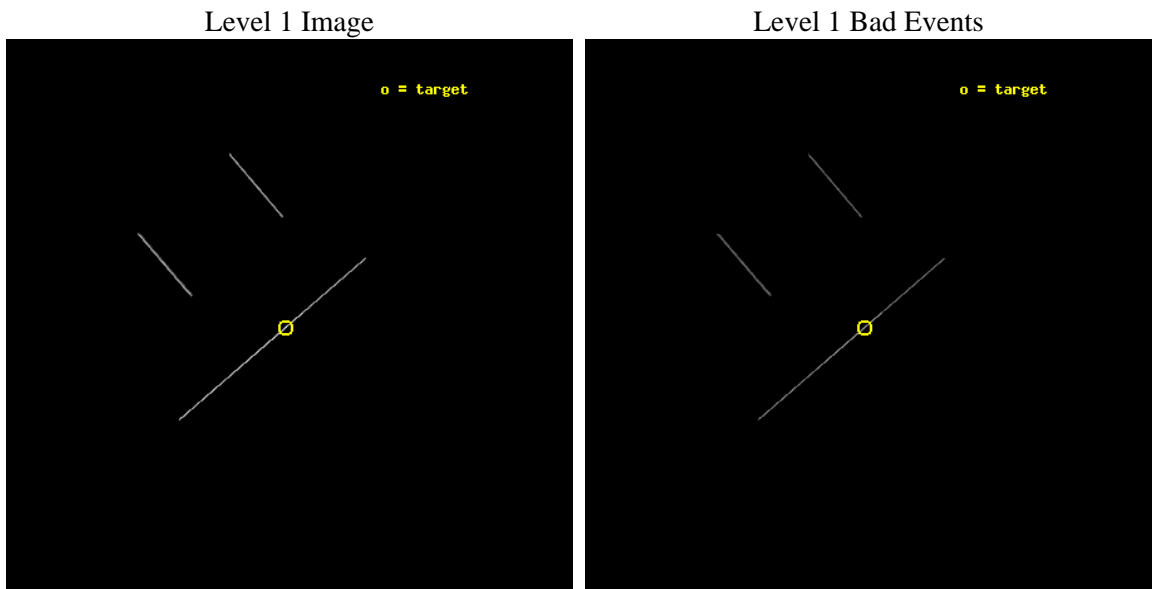
seq_num	300006	Sequence number
obs_id	81	Observation id
title	SUPER-SOFT X-RAY SOURCES	Proposal title
observer	Dr. Stephen Murray	Principal investigator
object	1E 0035.4-7230	Source name
ra_targ	9.3325	Observer's specified target RA [deg]
dec_targ	-72.236944	Observer's specified target Dec [deg]
ra_nom	9.3119540345557	Nominal RA [deg]
dec_nom	-72.229166834768	Nominal Dec [deg]
roll_nom	139.34924967076	Nominal Roll [deg]
revision	5	Processing version of data
ontime	6025.0	Sum of GTIs [s]
livetime	6001.46484375	Livetime [s]
ontime2	6025.0	Sum of GTIs [s]
ontime3	6025.0	Sum of GTIs [s]
ontime6	6025.0	Sum of GTIs [s]
ontime7	6025.0	Sum of GTIs [s]
ontime8	6025.0	Sum of GTIs [s]
l2events	47710	Number of level 2 events



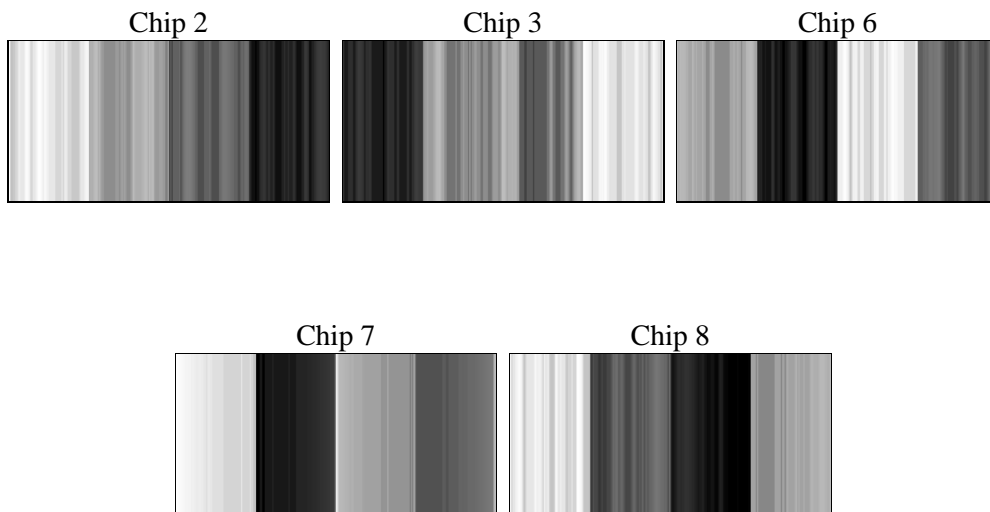
2 OBI

2.1 OBI

2.1.1 Images



2.1.2 Bias



2.1.3 Parameters

obi_num	2	Obi number	sched_exp_time	5700.000000	[s] Scheduled observation exposure time
ascdsver	8.4.5	Processing system revision	ontime	6025.0	Sum of GTIs [s]
caldsver	4.5.1.1	 	ontime2	6025.0	Sum of GTIs [s]
date	2012-08-27T18:38:47	Date and time of file creation	ontime3	6025.0	Sum of GTIs [s]
revision	5	Processing version of data	ontime6	6025.0	Sum of GTIs [s]
			ontime7	6025.0	Sum of GTIs [s]
			ontime8	6025.0	Sum of GTIs [s]
			l1events	76126	Number of level 1 events

2.1.4 Events

	ccd 2	ccd 3	ccd 6	ccd 7	ccd 8
level 1 events	8686	9469	9389	30582	18000
rejected events	1993	2200	2327	6883	3847
rejected %	22%	23%	24%	22%	21%

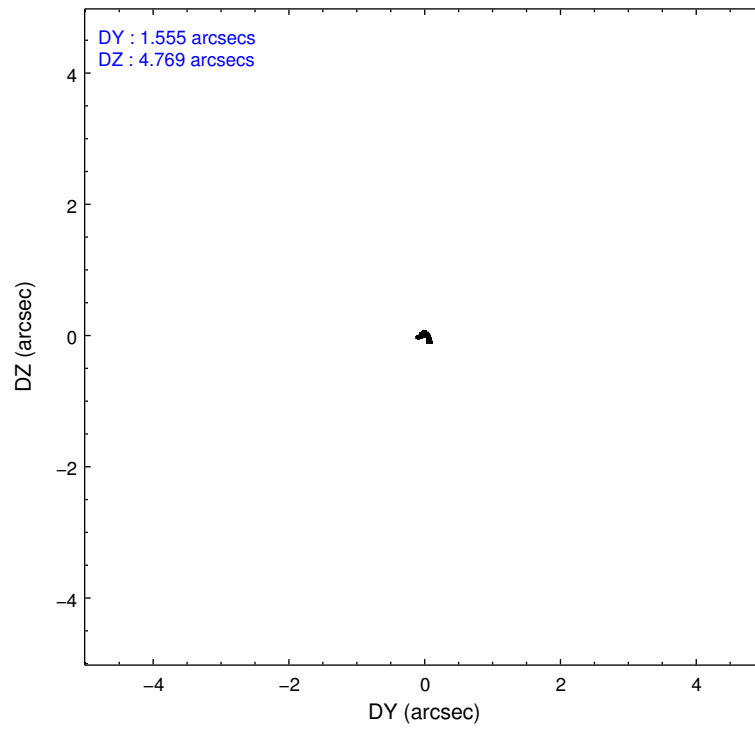
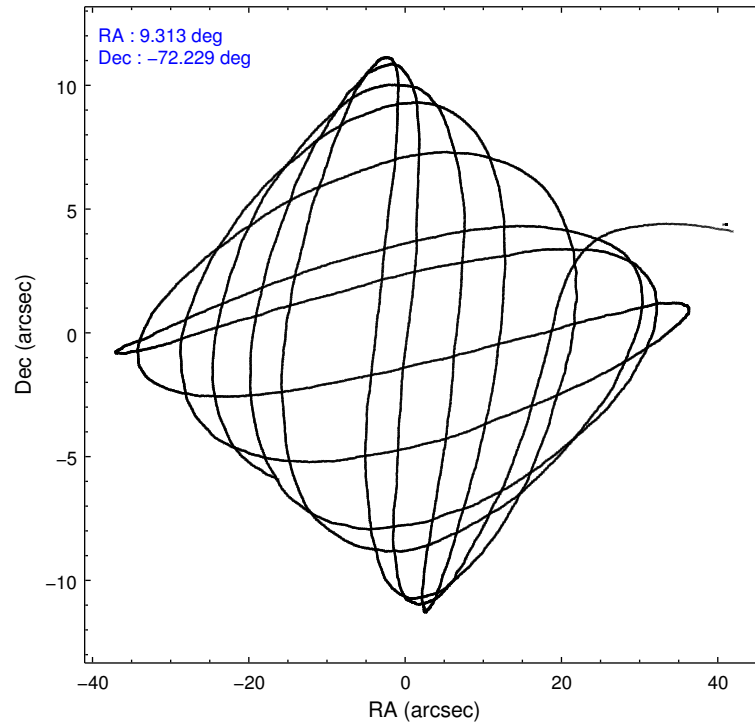
	ccd 2	ccd 3	ccd 6	ccd 7	ccd 8
grade 0 events	989	1010	901	5078	2687
	11%	10%	9%	16%	14%
grade 1 events	35	32	29	69	45
	0%	0%	0%	0%	0%
grade 2 events	2504	2828	2759	5855	4623
	28%	29%	29%	19%	25%
grade 3 events	1265	1447	1280	1927	2188
	14%	15%	13%	6%	12%
grade 4 events	1221	1260	1216	1942	2156
	14%	13%	12%	6%	11%
grade 5 events	1292	1397	1588	4526	2152
	14%	14%	16%	14%	11%
grade 6 events	1380	1495	1616	11185	4149
	15%	15%	17%	36%	23%
grade 7 events	0	0	0	0	0
	0%	0%	0%	0%	0%

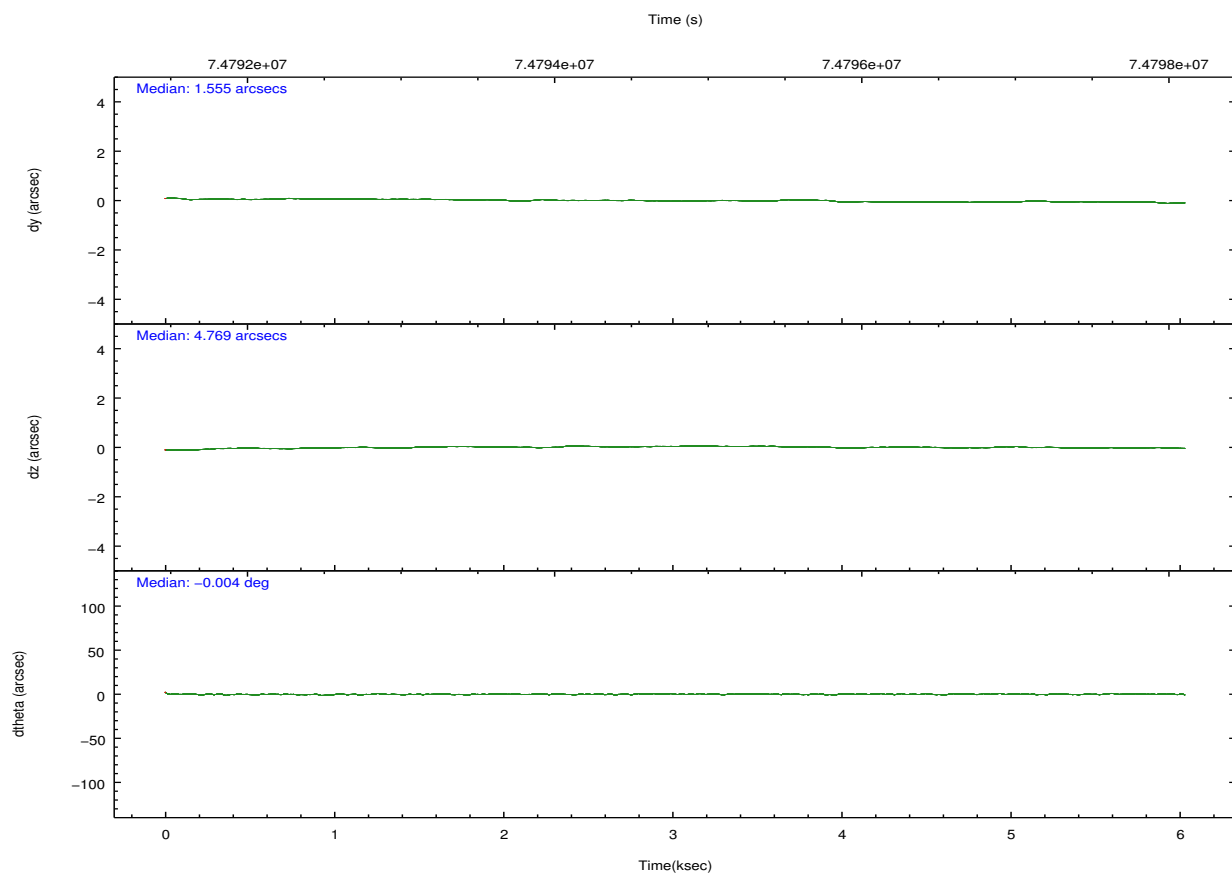
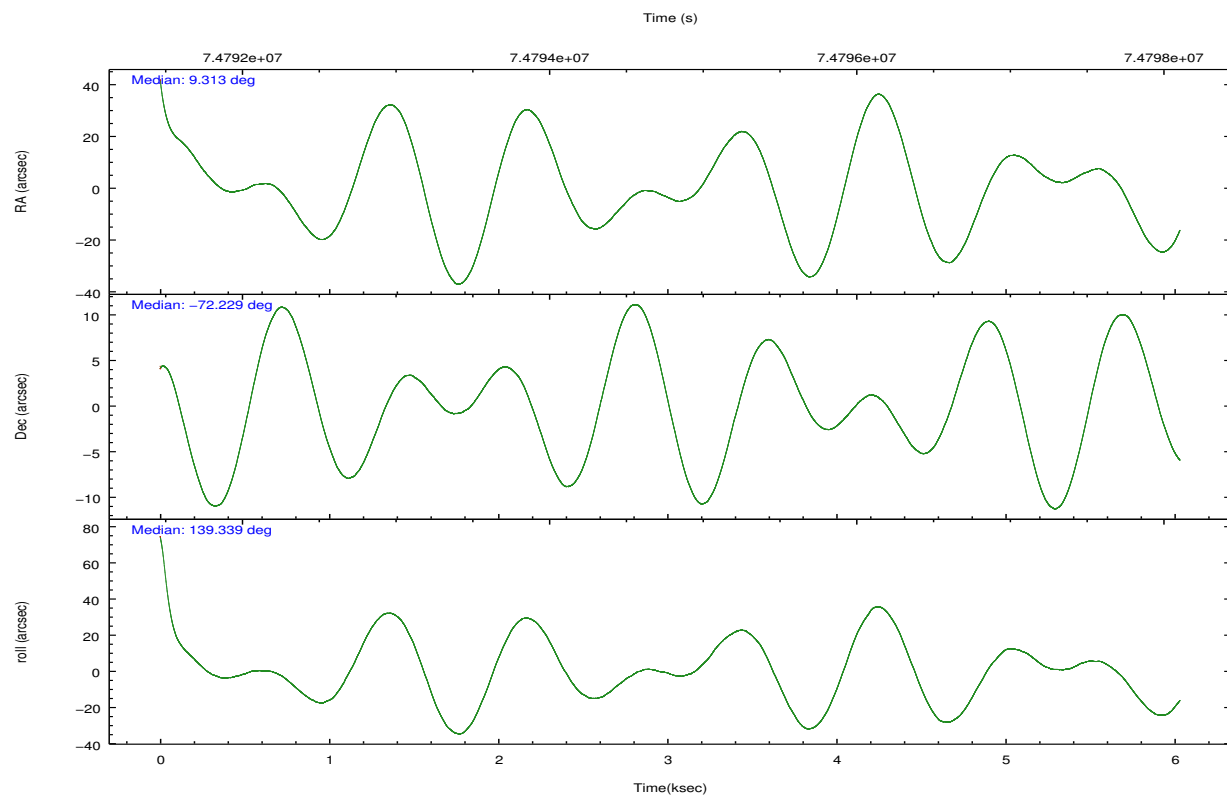
2.2 Compared Parameters

Parameter	Planned	Actual
Instrument	ACIS	ACIS
Detector	ACIS-23678	ACIS-23678
Grating	NONE	NONE
Data mode	CC33_FAINT	CC33_FAINT
Observation mode	POINTING	POINTING
[deg] Pointing RA	9.400374	9.311954034555686
[deg] Pointing Dec	-72.234103	-72.22916683476765
[deg] Pointing Roll	139.276743	139.3492496707576
[mm] SIM focus pos	-0.684267	-0.6828225247311905
[mm] SIM defocus	0	0.001444936568705701
[mm] SIM translation stage pos	-184.282523	-184.2892543431418
[mm] SIM translation stage offset	-5.85	-5.843268239866035
[s] Observation start time (MET)	74792096.184000	74791063.75479101
Observation start date	2000-05-15T15:33:52	2000-05-15T15:17:43
[s] Observation end time (MET)	74797796.184000	74798306.405057
Observation end date	2000-05-15T17:08:52	2000-05-15T17:18:26
Read mode	CONTINUOUS	CONTINUOUS

Parameter	Planned	Actual
Obspar format version number	7	7
Obspar file type	PREDICTED	ACTUAL
Obspar update status	NONE	UPDATED
Number of optional ACIS chips dropped	0	0
On-chip summing requested	N	N
Subarray requested	NONE	NONE
Alternating exposures requested	N	N
[s] Primary exposure time	0.000000	0

2.3 Aspect



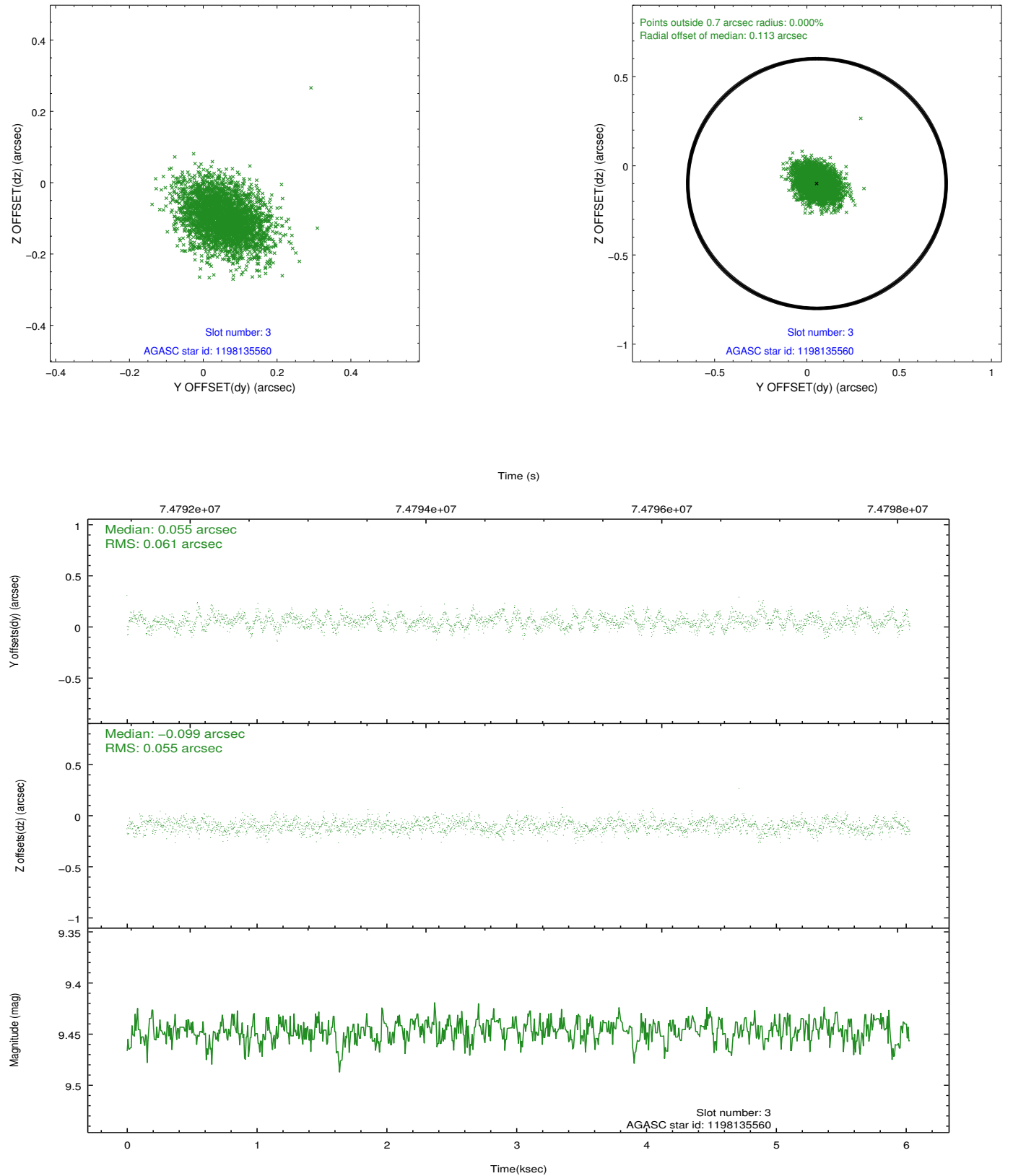


Slot Statistics

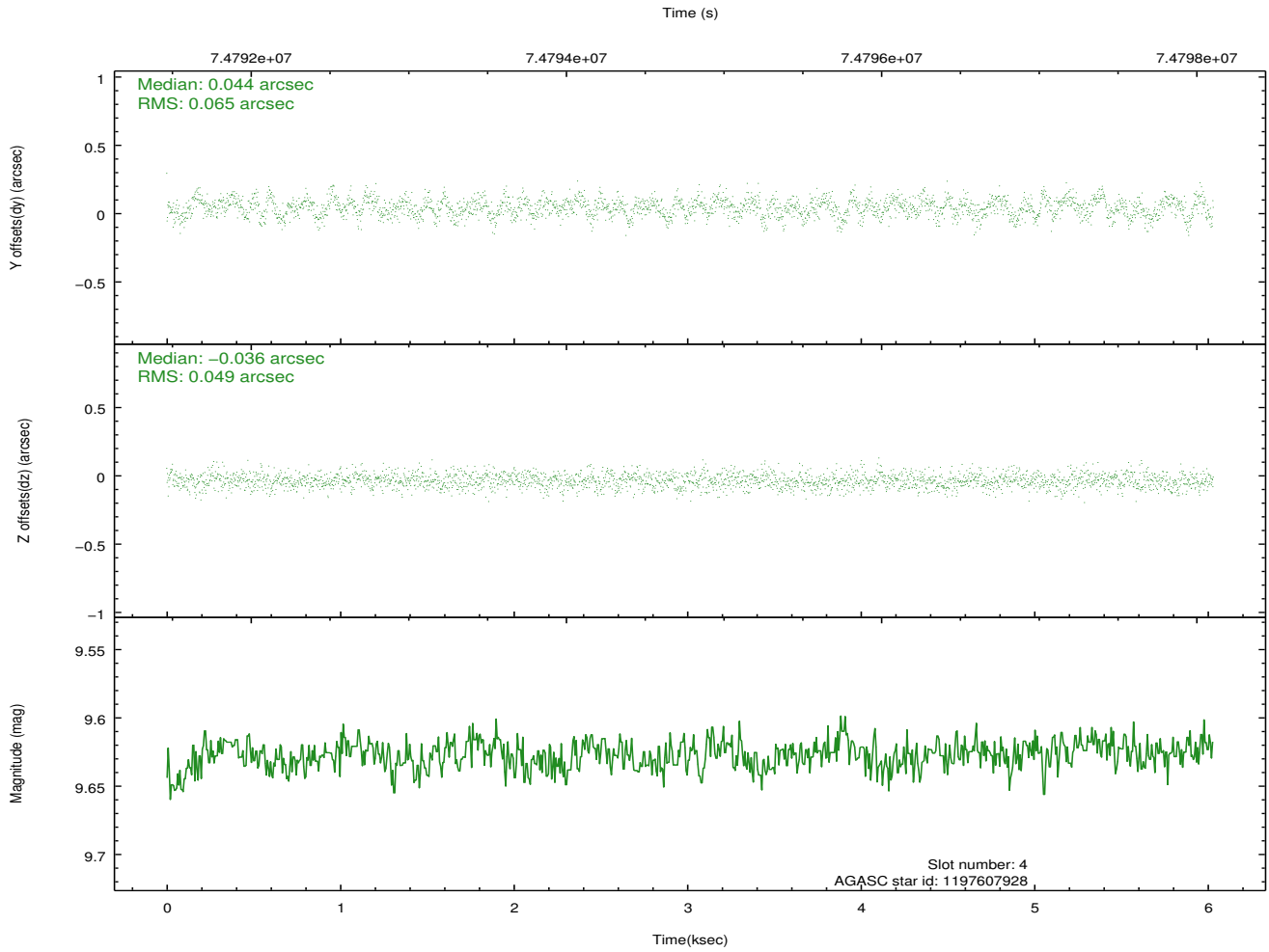
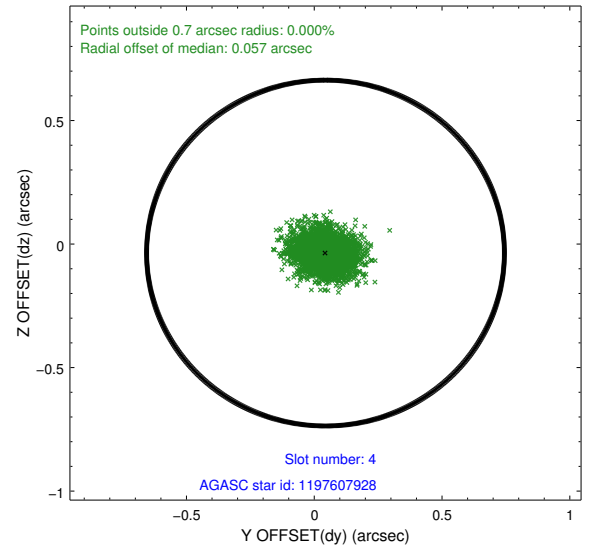
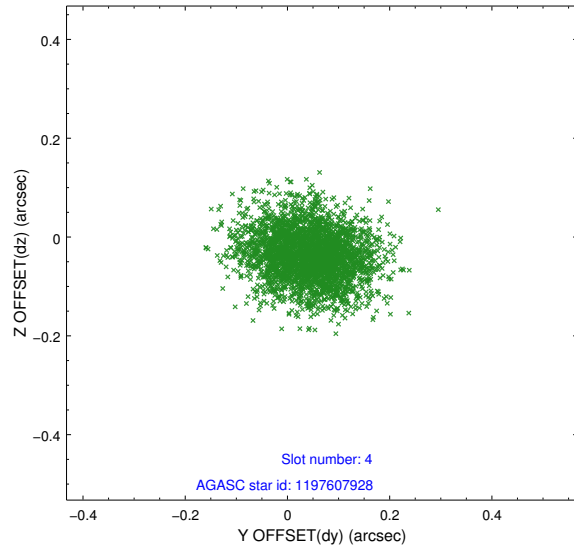
slot	status	id	mag	n_pts	med_dy	med_dz	dr1	dr2	ra	dec	mean_y	mean_z
0	FID	ACIS-S-2	7.10	1472	-0.072	-0.054	0.006	0.010	0.000000	0.000000	-753.81	-1846.38
1	FID	ACIS-S-4	7.19	1472	0.036	0.049	0.006	0.010	0.000000	0.000000	2159.13	61.11
2	FID	ACIS-S-5	7.23	1471	0.005	0.013	0.006	0.011	0.000000	0.000000	-1805.31	55.86
3	GUIDE	1198135560	9.45	2943	0.055	-0.099	0.087	0.142	8.700395	-72.843436	-869.93	2150.16
4	GUIDE	1197607928	9.63	2941	0.044	-0.036	0.086	0.141	7.837743	-72.165759	1452.11	955.07
5	UNUSED		0.00	0	0.000	0.000	0.000	0.000	0.000000	0.000000	0.00	0.00
6	UNUSED		0.00	0	0.000	0.000	0.000	0.000	0.000000	0.000000	0.00	0.00
7	GUIDE	1197739496	9.79	2939	-0.099	0.140	0.100	0.163	8.930155	-71.541204	2033.99	-1538.69

2.4 Star Slots

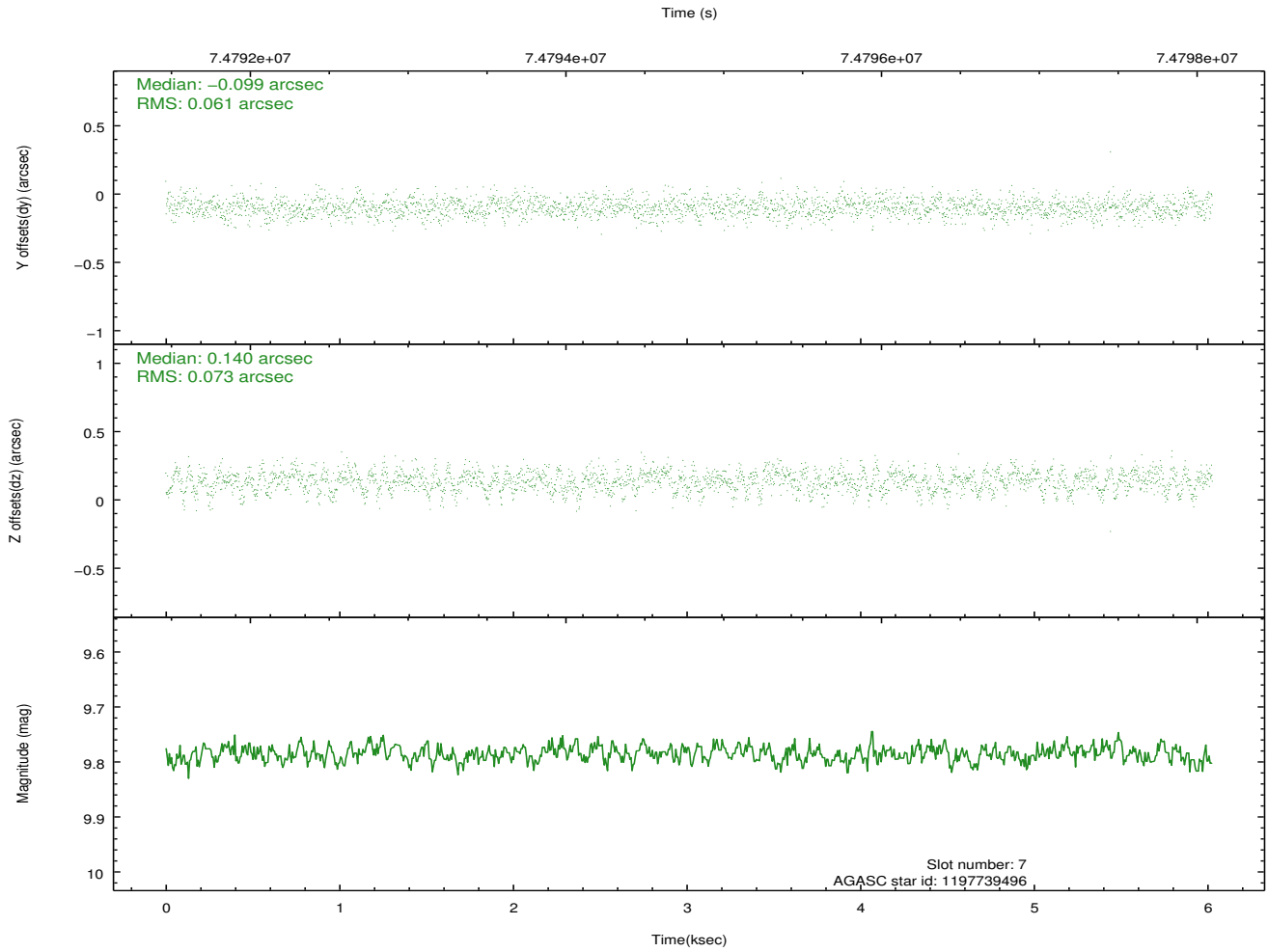
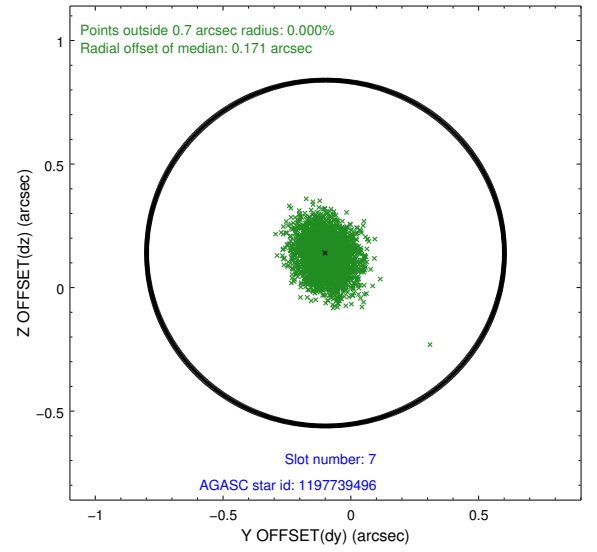
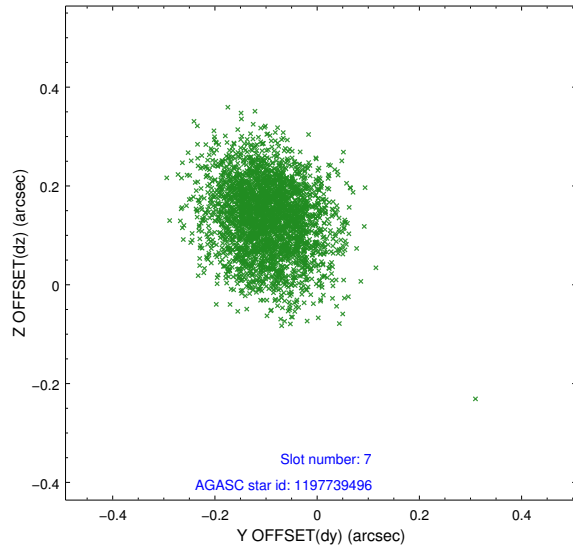
2.4.1 Slot 3



2.4.2 Slot 4

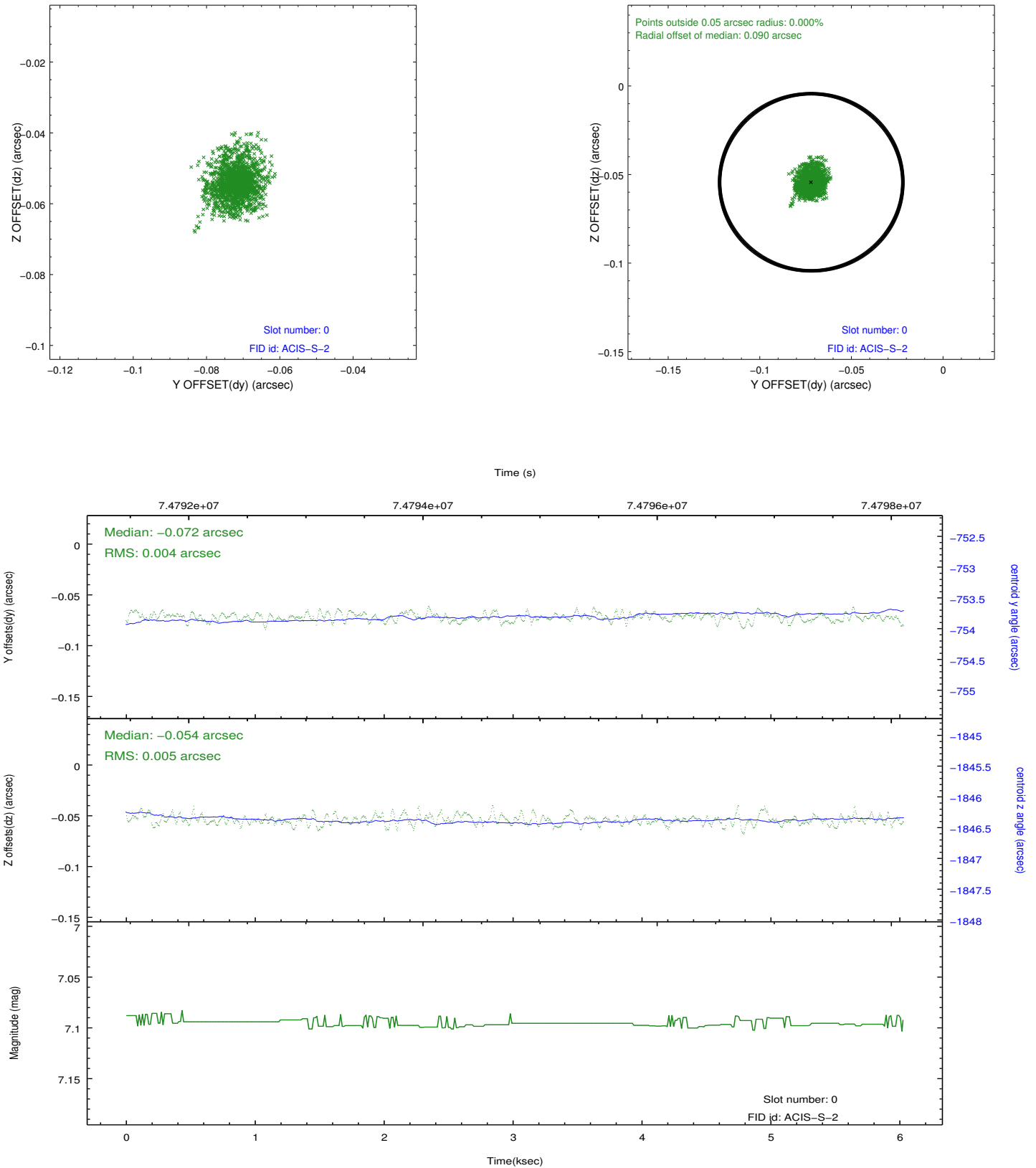


2.4.3 Slot 7

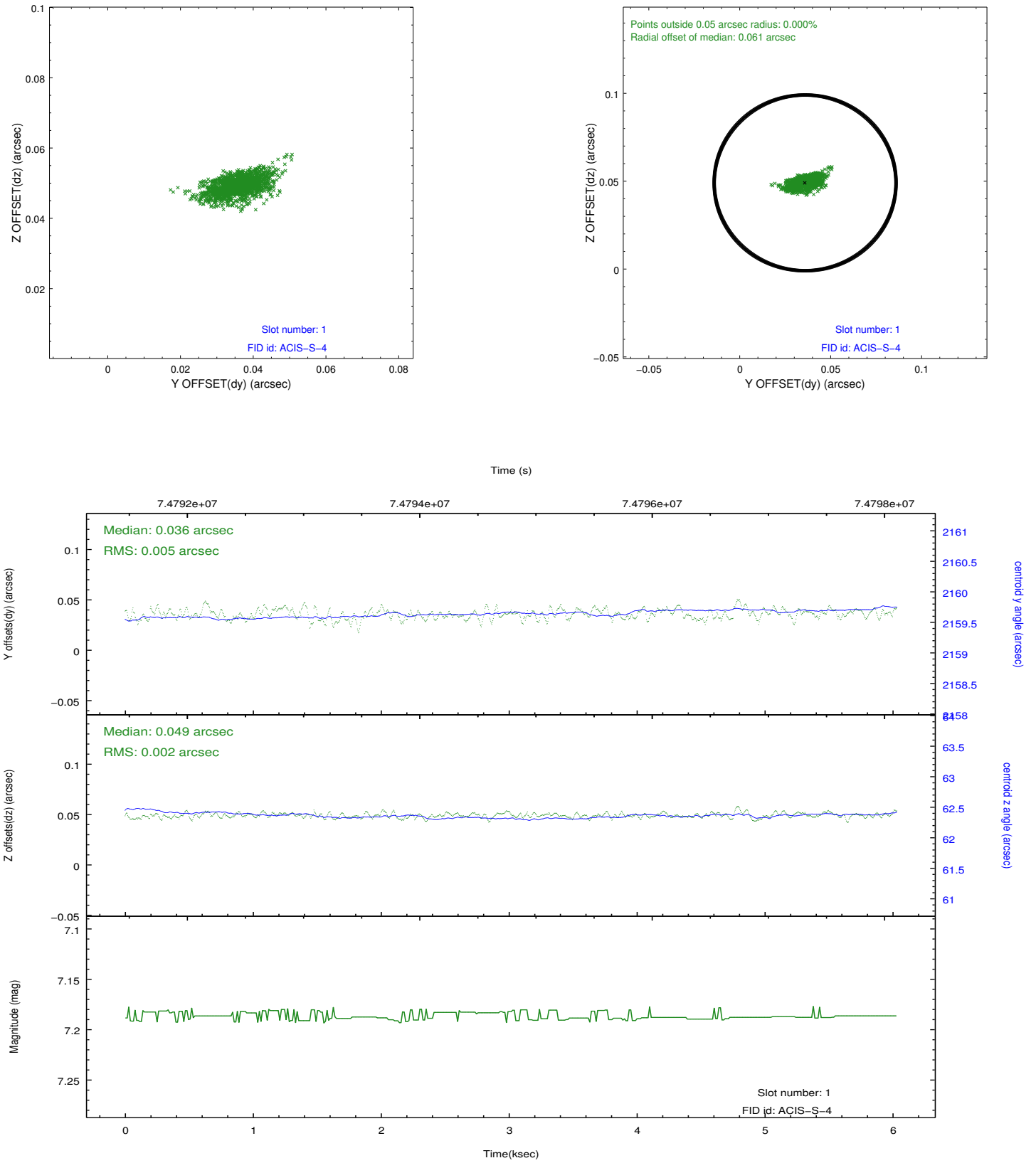


2.5 FID Slots

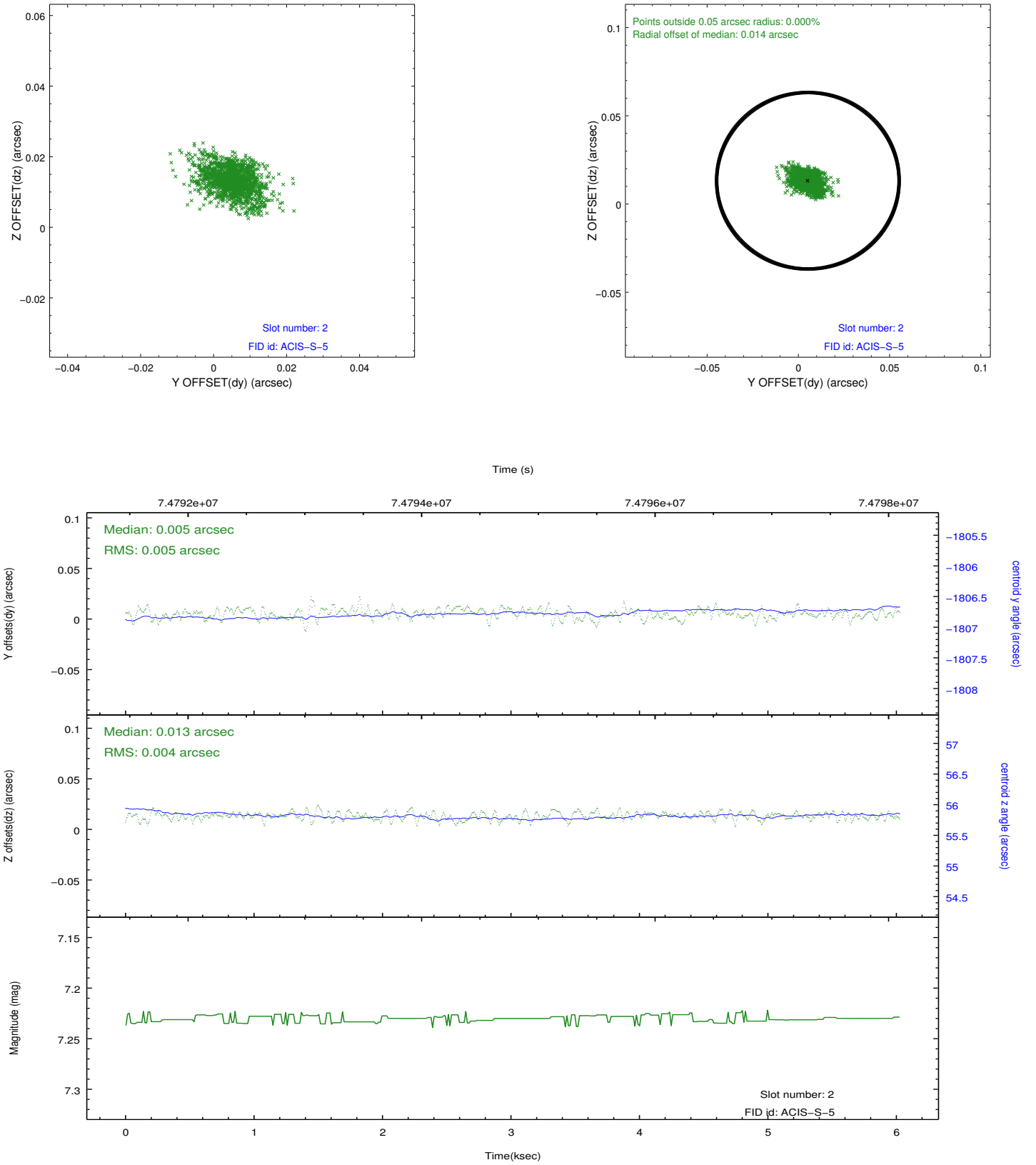
2.5.1 Slot 0



2.5.2 Slot 1



2.5.3 Slot 2



A Summary

A.1 Status

V&V Scientist	Joy Nichols
V&V Date (YYYY-MM-DD)	2012.08.28
V&V Edition	1
V&V Disposition and Status	OK
V&V Charge Time	6.028

A.2 Comments

Only 3 guide stars were used for this observation. The aspect solution is satisfactory with these 3 stars.