

V&V Reference Report

L2 ASCDS Version : 8.4.4

Observation 8041 - L2 Version 3
Chandra X-Ray Center

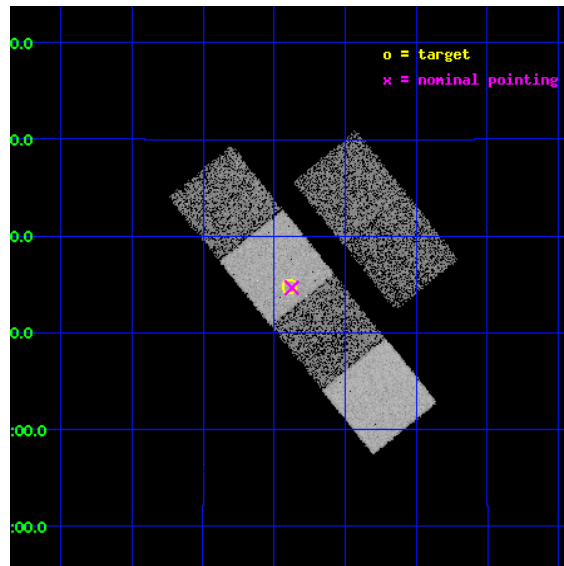
L2 Processing Date : Apr 23 2012

Contents

1	Front	2
2	OBI	3
2.1	OBI	3
2.1.1	Images	3
2.1.2	Bias	3
2.1.3	Parameters	4
2.1.4	Events	4
2.2	Compared Parameters	5
2.3	Aspect	6
2.4	Star Slots	9
2.4.1	Slot 3	9
2.4.2	Slot 4	10
2.4.3	Slot 5	11
2.4.4	Slot 6	12
2.4.5	Slot 7	13
2.5	FID Slots	14
2.5.1	Slot 0	14
2.5.2	Slot 1	15
2.5.3	Slot 2	16
A	Summary	17
A.1	Status	17
A.2	Comments	17

1 Front

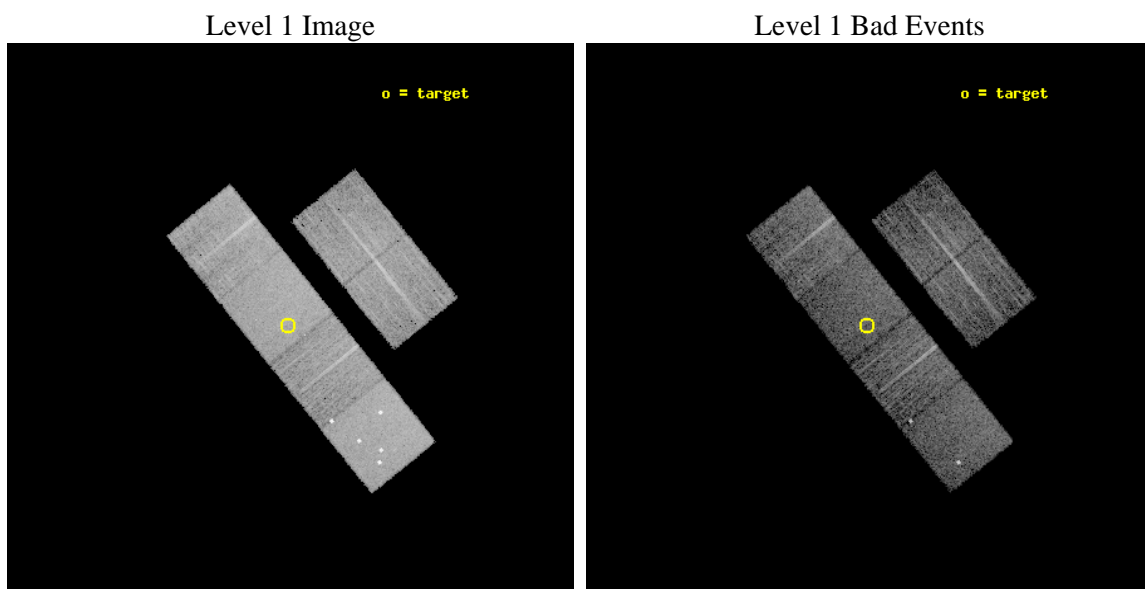
seq_num	900582	Sequence number
obs_id	8041	Observation id
title	The Duty Cycle of Supermassive Black Holes: X-raying Virgo	Proposa
observer	Prof Tommaso Treu	Principal investigator
object	1692	Source name
dtcycle	0	
cycle	P	events from which exps? Prim/Second/Both
ra_targ	189.2225	Observer's specified target RA [deg]
dec_targ	7.246389	Observer's specified target Dec [deg]
ra_nom	189.21868050223	Nominal RA [deg]
dec_nom	7.2441895242709	Nominal Dec [deg]
roll_nom	231.04506411856	Nominal Roll [deg]
revision	3	Processing version of data
ontime	5158.3999808431	Sum of GTIs [s]
livetime	5093.0812142701	Livetime [s]
ontime2	5158.3999808431	Sum of GTIs [s]
ontime3	5158.3848680854	Sum of GTIs [s]
ontime5	5158.3999808431	Sum of GTIs [s]
ontime6	5158.3999808431	Sum of GTIs [s]
ontime7	5158.3999808431	Sum of GTIs [s]
ontime8	5155.1027682424	Sum of GTIs [s]
l2events	79749	Number of level 2 events



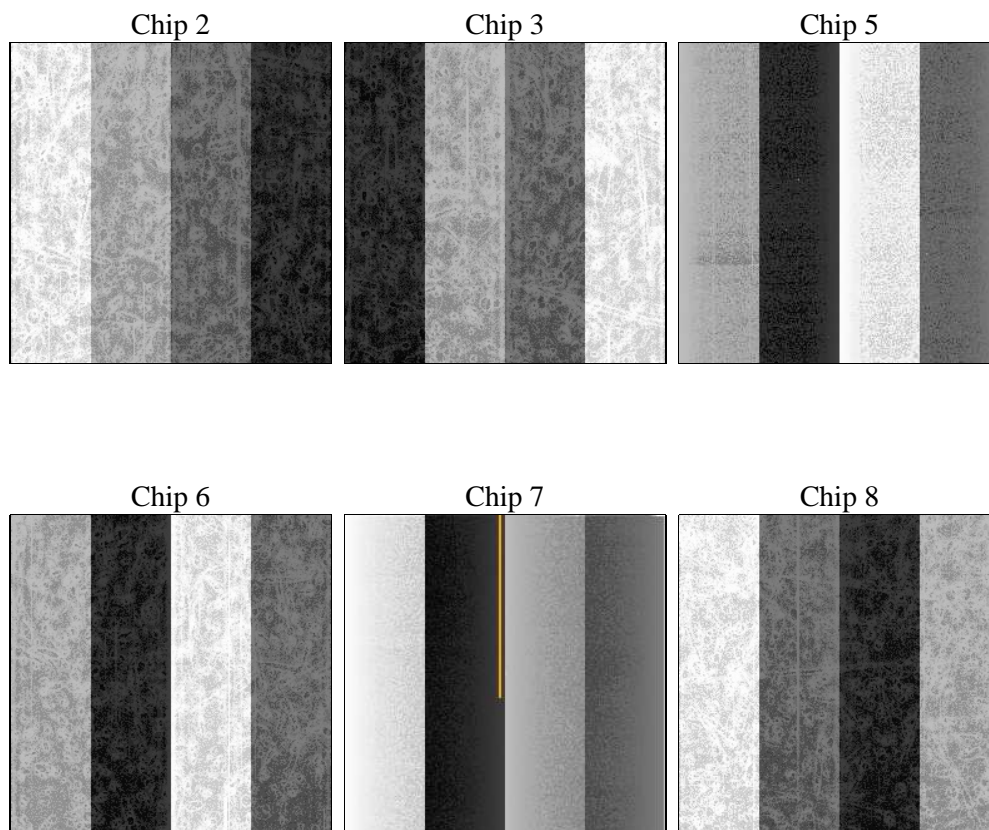
2 OBI

2.1 OBI

2.1.1 Images



2.1.2 Bias



2.1.3 Parameters

obi_num	0	Obi number	sched_exp_time	5400.000000	[s] Scheduled observation exposure time
ascdsver	8.4.4	Processing system revision	ontime	5158.3999808431	Sum of GTIs [s]
caldsver	4.4.9	 	ontime2	5158.3999808431	Sum of GTIs [s]
date	2012-04-23T21:13:00	Date and time of file creation	ontime3	5158.3848680854	Sum of GTIs [s]
revision	3	Processing version of data	ontime5	5158.3999808431	Sum of GTIs [s]
			ontime6	5158.3999808431	Sum of GTIs [s]
			ontime7	5158.3999808431	Sum of GTIs [s]
			ontime8	5155.1027682424	Sum of GTIs [s]
			l1events	354252	Number of level 1 events

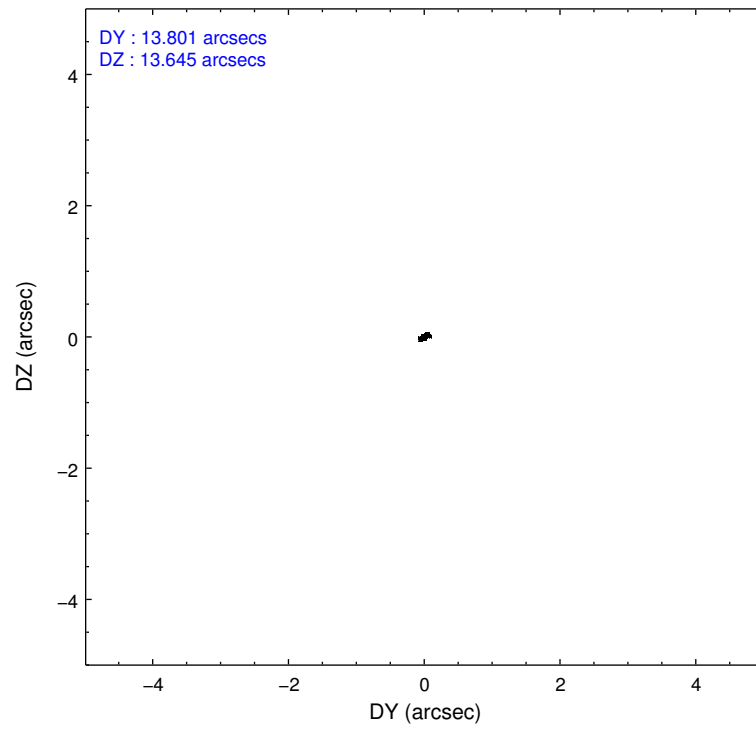
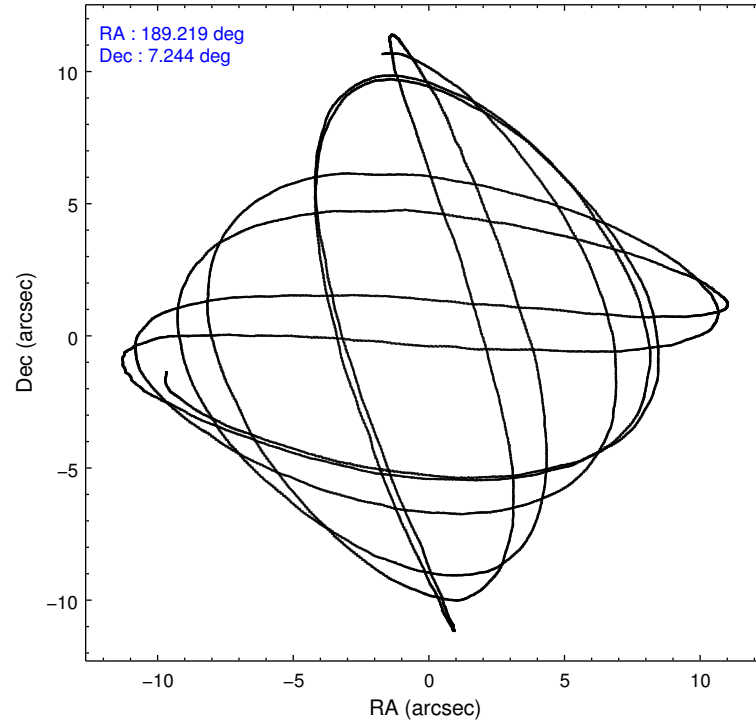
2.1.4 Events

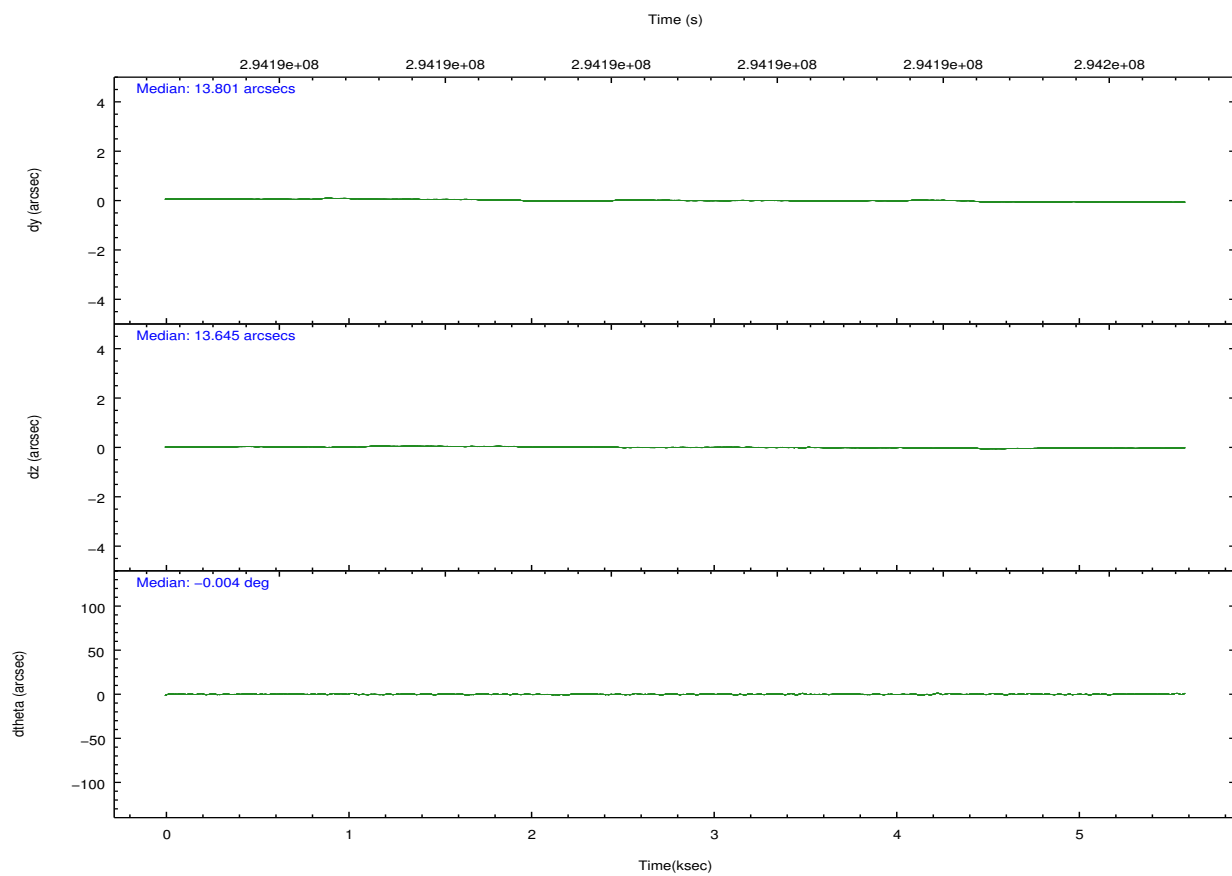
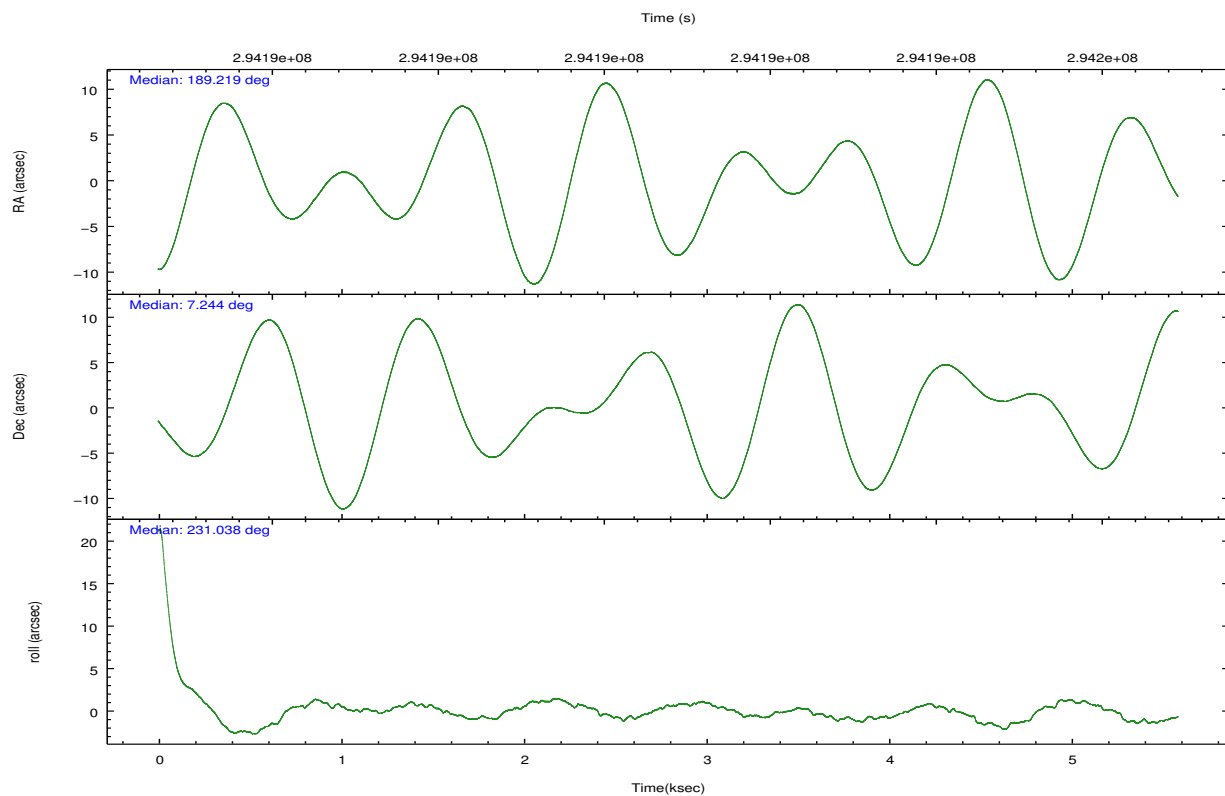
	ccd 2	ccd 3	ccd 5	ccd 6	ccd 7	ccd 8		ccd 2	ccd 3	ccd 5	ccd 6	ccd 7	ccd 8
level 1 events	49070	47054	79559	48528	67043	62998	grade 0 events	2342	2466	6511	2270	2603	4402
rejected events	43523	41429	40787	42721	39105	49621		4%	5%	8%	4%	3%	6%
rejected %	88%	88%	51%	88%	58%	78%	grade 1 events	34	27	178	27	60	46
								0%	0%	0%	0%	0%	0%
							grade 2 events	1215	1093	10850	1300	5774	2962
								2%	2%	13%	2%	8%	4%
							grade 3 events	528	510	1417	563	2327	1412
								1%	1%	1%	1%	3%	2%
							grade 4 events	519	549	1324	516	2436	1259
								1%	1%	1%	1%	3%	1%
							grade 5 events	1902	2228	5872	2293	6241	2938
								3%	4%	7%	4%	9%	4%
							grade 6 events	947	1010	18691	1162	14817	3344
								1%	2%	23%	2%	22%	5%
							grade 7 events	41583	39171	34716	40397	32785	46635
								84%	83%	43%	83%	48%	74%

2.2 Compared Parameters

Parameter	Planned	Actual	Parameter	Planned	Actual
Instrument	ACIS	ACIS	Obspar format version number	7	7
Detector	ACIS-235678	ACIS-235678	Obspar file type	PREDICTED	ACTUAL
Grating	NONE	NONE	Obspar update status	NONE	UPDATED
Data mode	FAINT	FAINT	Number of optional ACIS chips dropped	0	0
Observation mode	POINTING	POINTING	On-chip summing requested	N	N
[deg] Pointing RA	189.222540	189.2186805022276	Subarray requested	NONE	NONE
[deg] Pointing Dec	7.271267	7.244189524270915	Alternating exposures requested	N	N
[deg] Pointing Roll	230.887941	231.0450641185612	[s] Primary exposure time	0.000000	3.2
[mm] SIM focus pos	-0.684267	-0.6828225247311905			
[mm] SIM defocus	0	0.001444936568705701			
[mm] SIM translation stage pos	-190.132523	-190.1425803651734			
[mm] SIM translation stage offset	0	0.01005778216563158			
[s] Observation start time (MET)	294189778.184000	294189301.98958			
Observation start date	2007-04-28T23:21:53	2007-04-28T23:15:01			
[s] Observation end time (MET)	294195178.184000	294195816.88989			
Observation end date	2007-04-29T00:51:53	2007-04-29T01:03:36			
Read mode	TIMED	TIMED			

2.3 Aspect



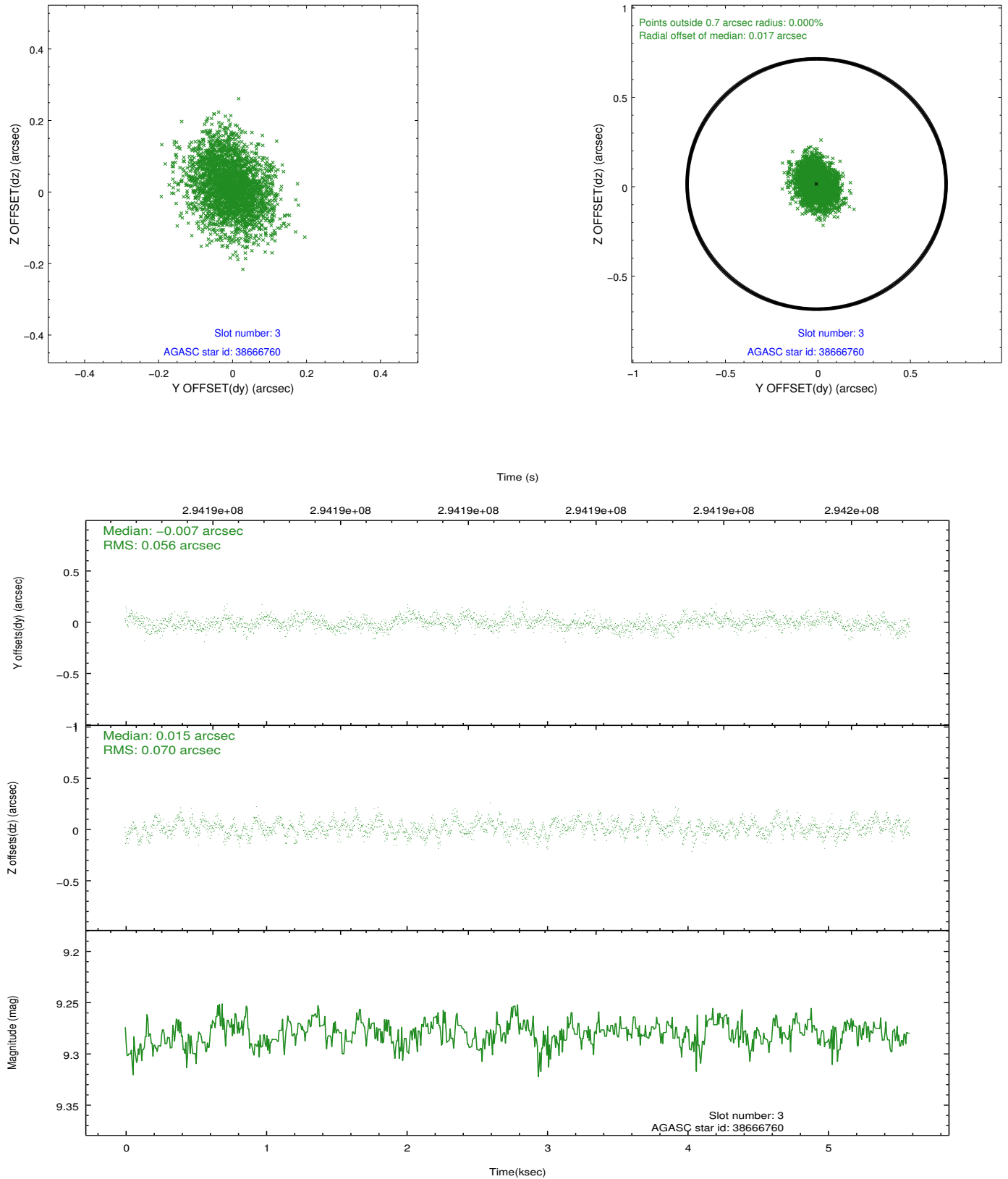


Slot Statistics

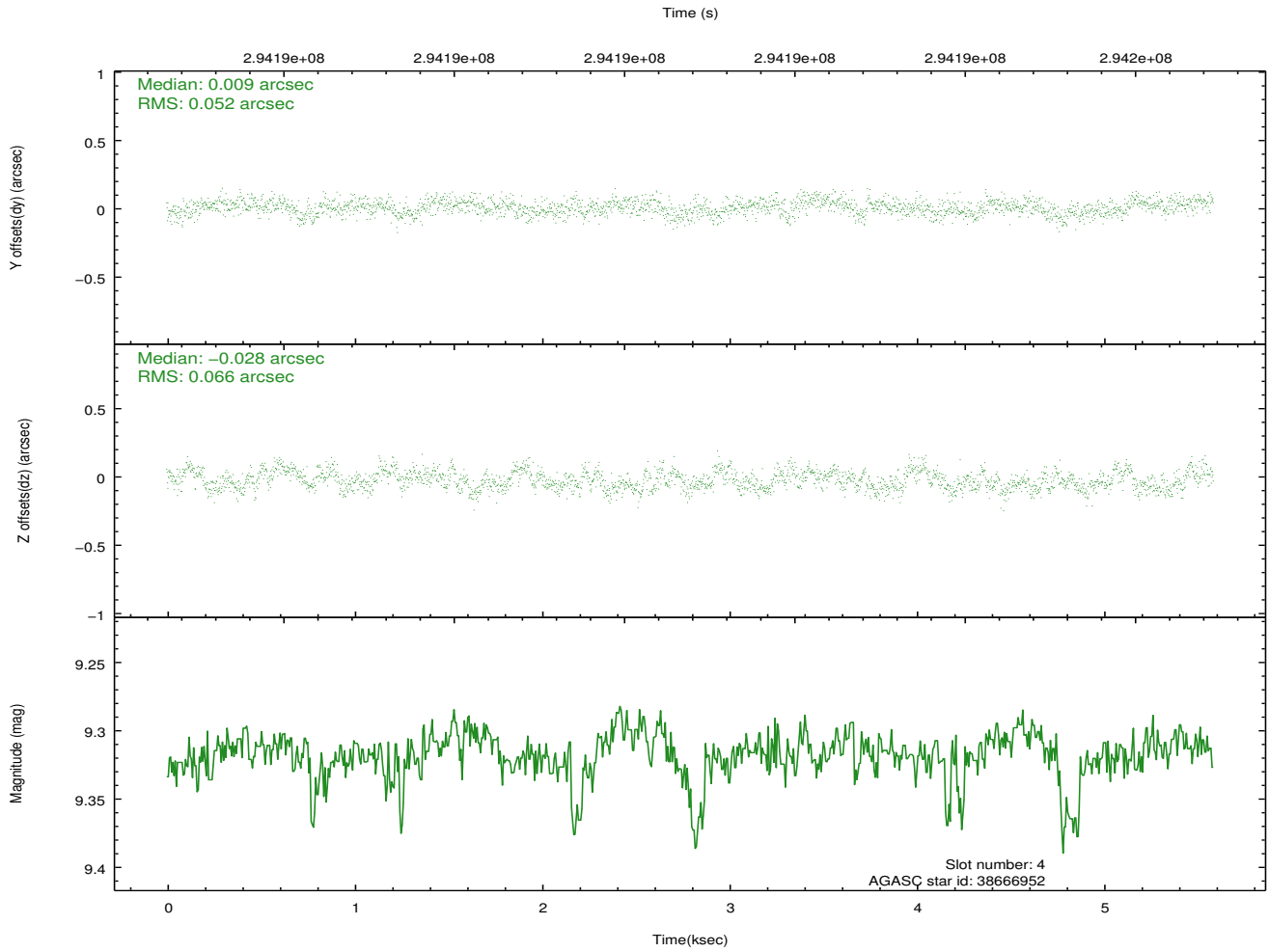
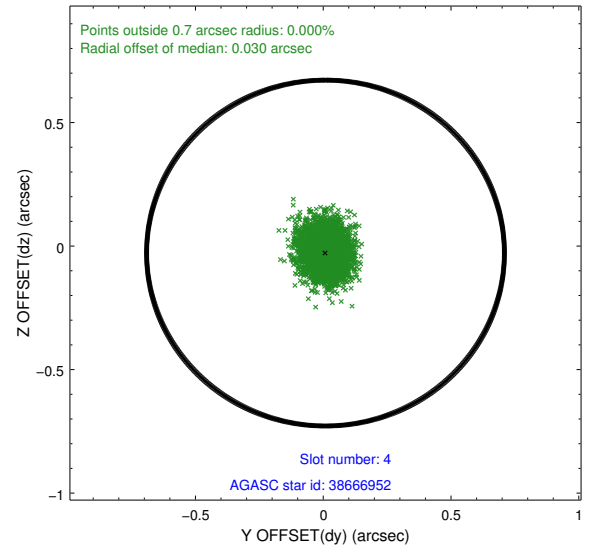
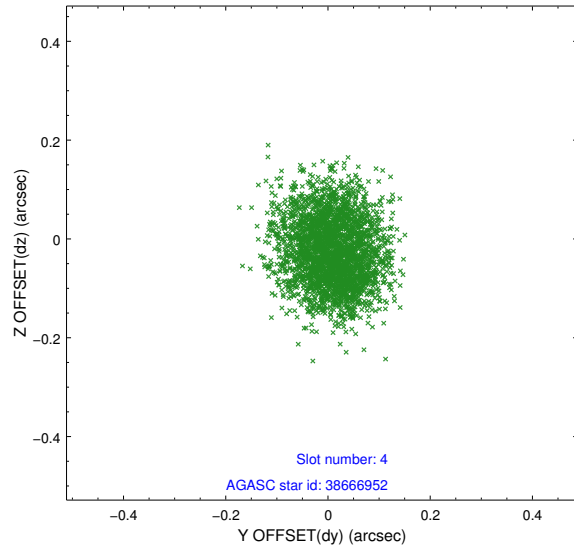
slot	status	id	mag	n_pts	med_dy	med_dz	dr1	dr2	ra	dec	mean_y	mean_z
0	FID	ACIS-S-2	7.10	1363	-0.048	-0.062	0.007	0.011	0.000000	0.000000	-766.80	-1734.99
1	FID	ACIS-S-4	7.20	1363	0.186	0.040	0.007	0.012	0.000000	0.000000	2146.23	172.47
2	FID	ACIS-S-5	7.23	1363	-0.169	0.031	0.007	0.012	0.000000	0.000000	-1818.38	167.37
3	GUIDE	38666760	9.28	2725	-0.007	0.015	0.097	0.157	189.327127	6.863076	904.99	1216.57
4	GUIDE	38666952	9.32	2723	0.009	-0.028	0.090	0.141	189.411678	7.426614	-859.26	171.52
5	GUIDE	38671536	8.56	2726	-0.075	-0.022	0.054	0.088	188.748078	7.439883	597.11	-1697.74
6	GUIDE	114695320	9.39	2661	-0.045	0.168	0.093	0.155	189.844685	7.574189	-2247.67	1032.94
7	GUIDE	114695376	9.17	2722	0.120	-0.132	0.084	0.137	189.203557	7.933205	-1806.46	-1555.75

2.4 Star Slots

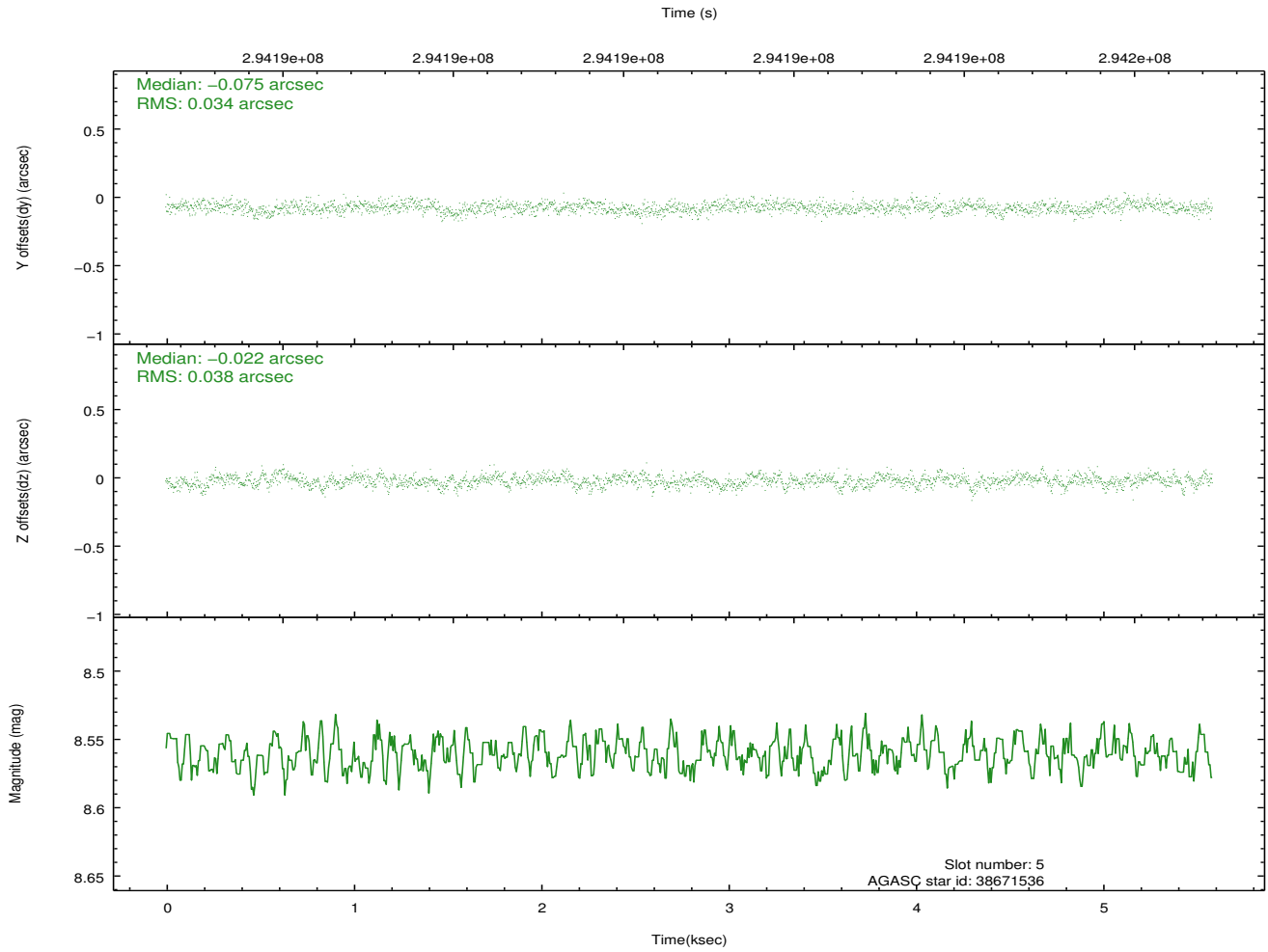
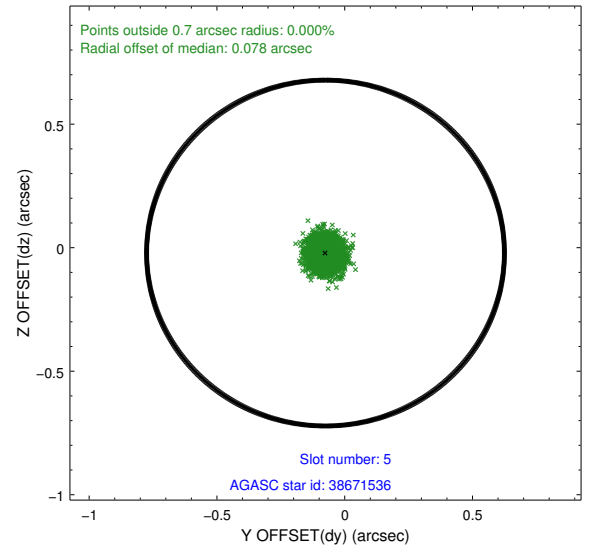
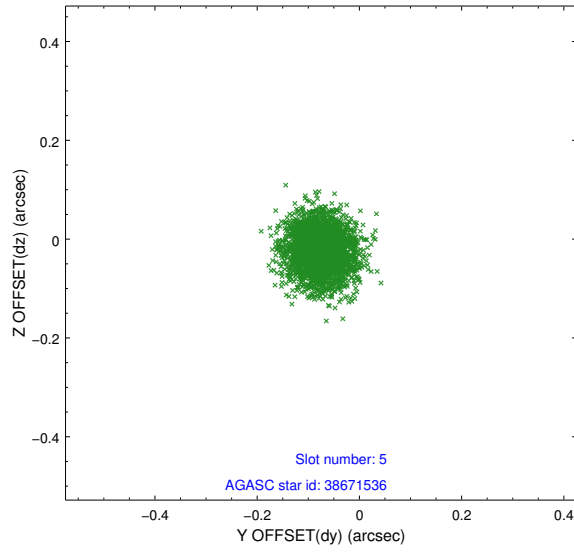
2.4.1 Slot 3



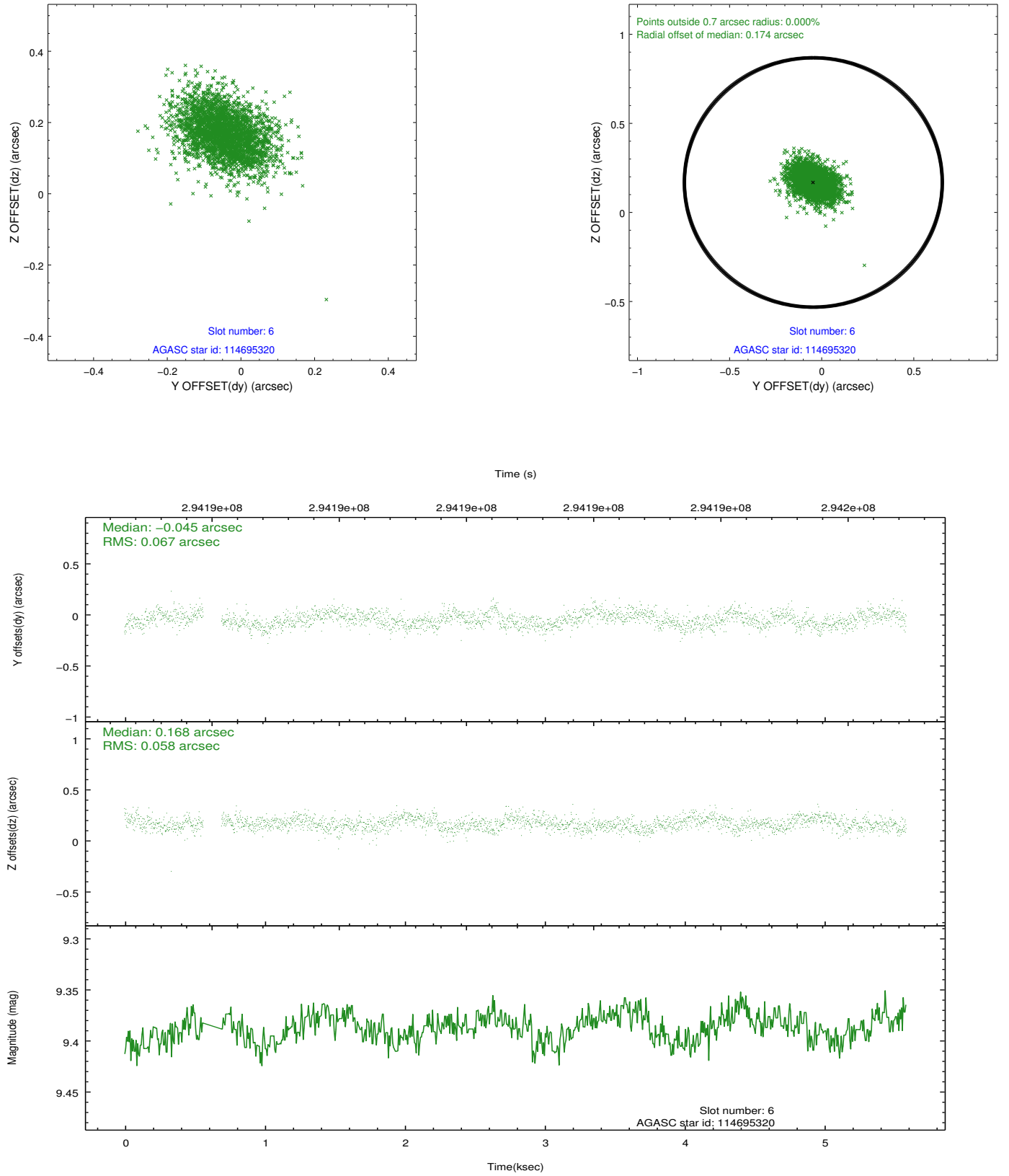
2.4.2 Slot 4



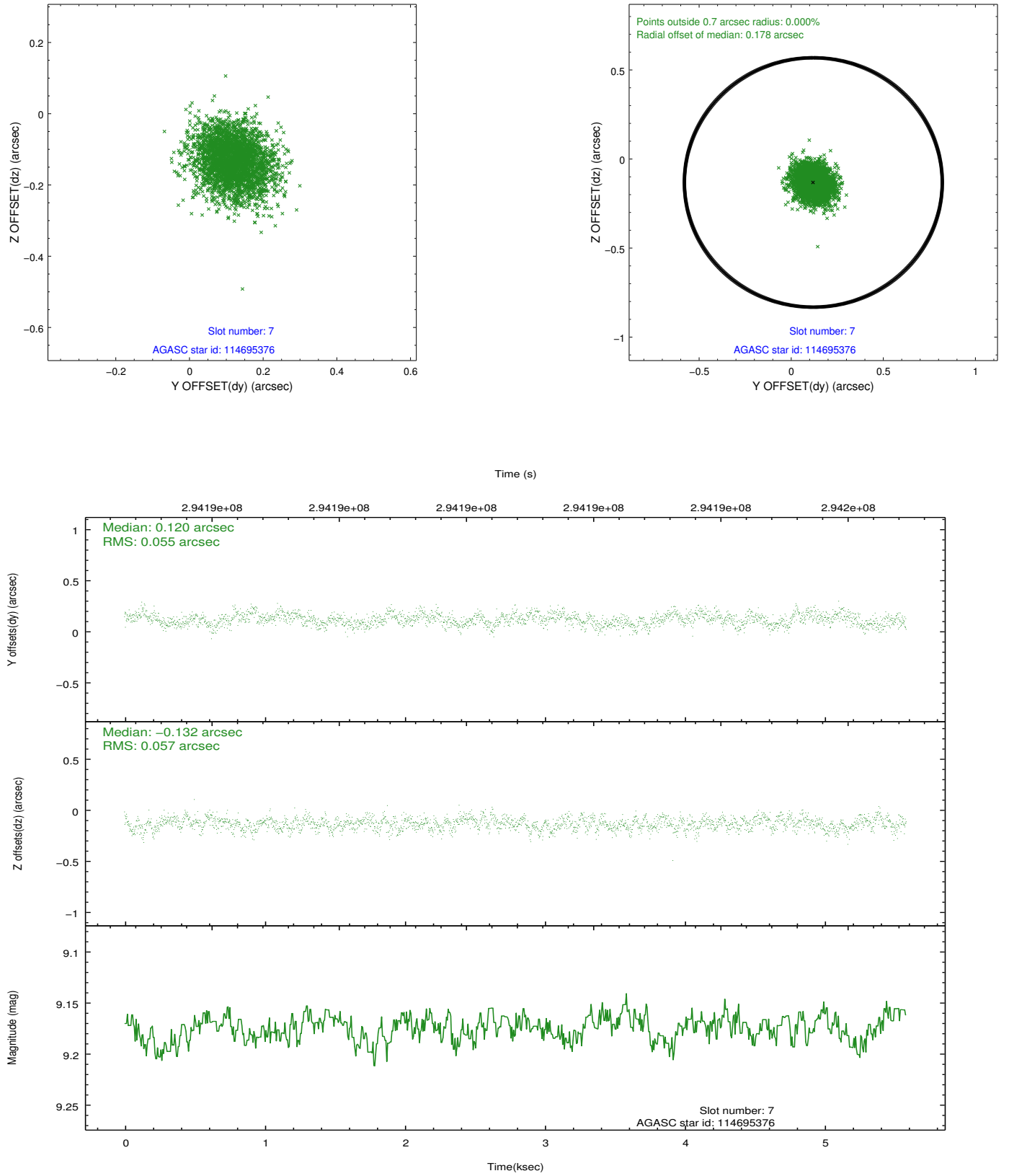
2.4.3 Slot 5



2.4.4 Slot 6

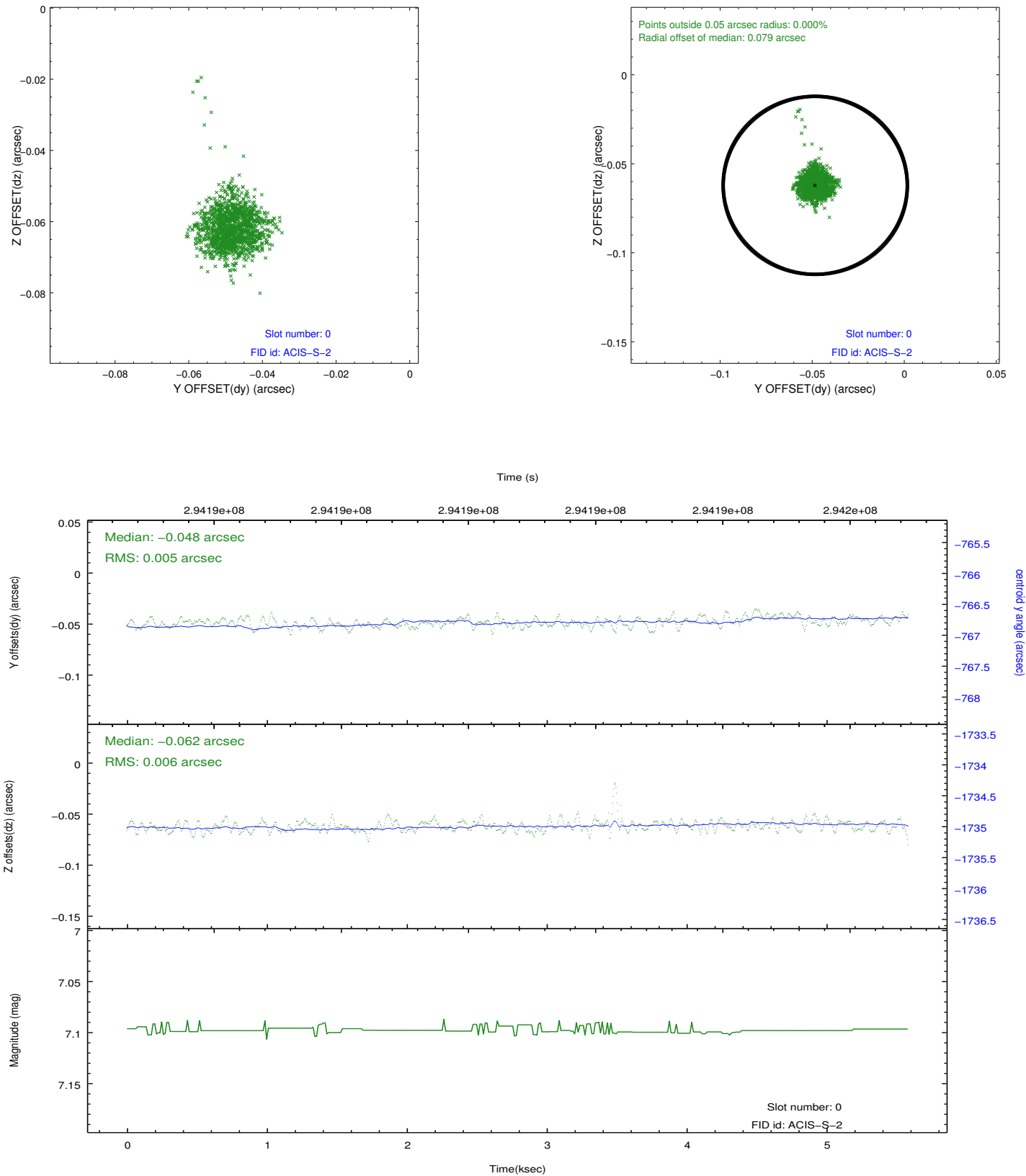


2.4.5 Slot 7

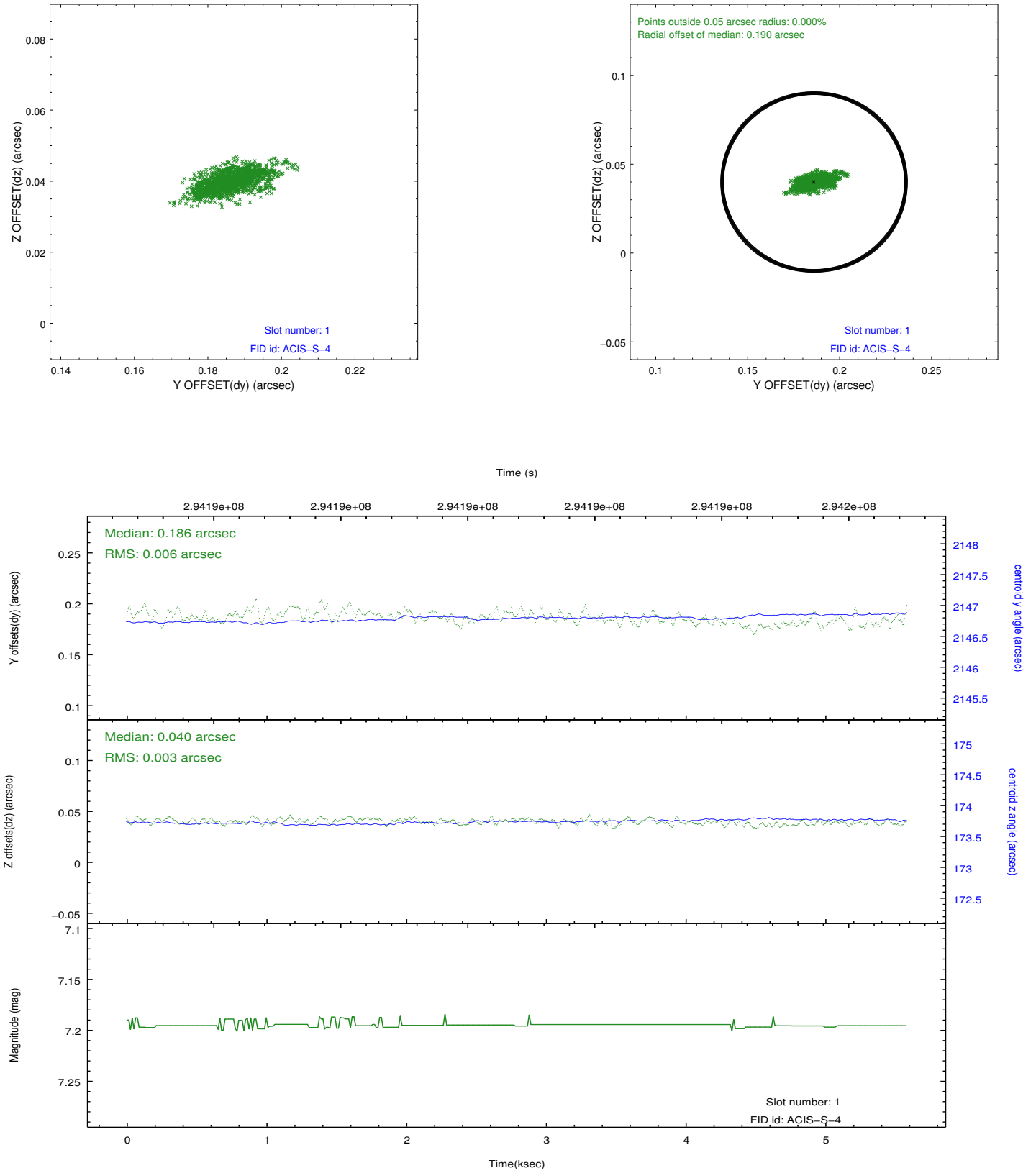


2.5 FID Slots

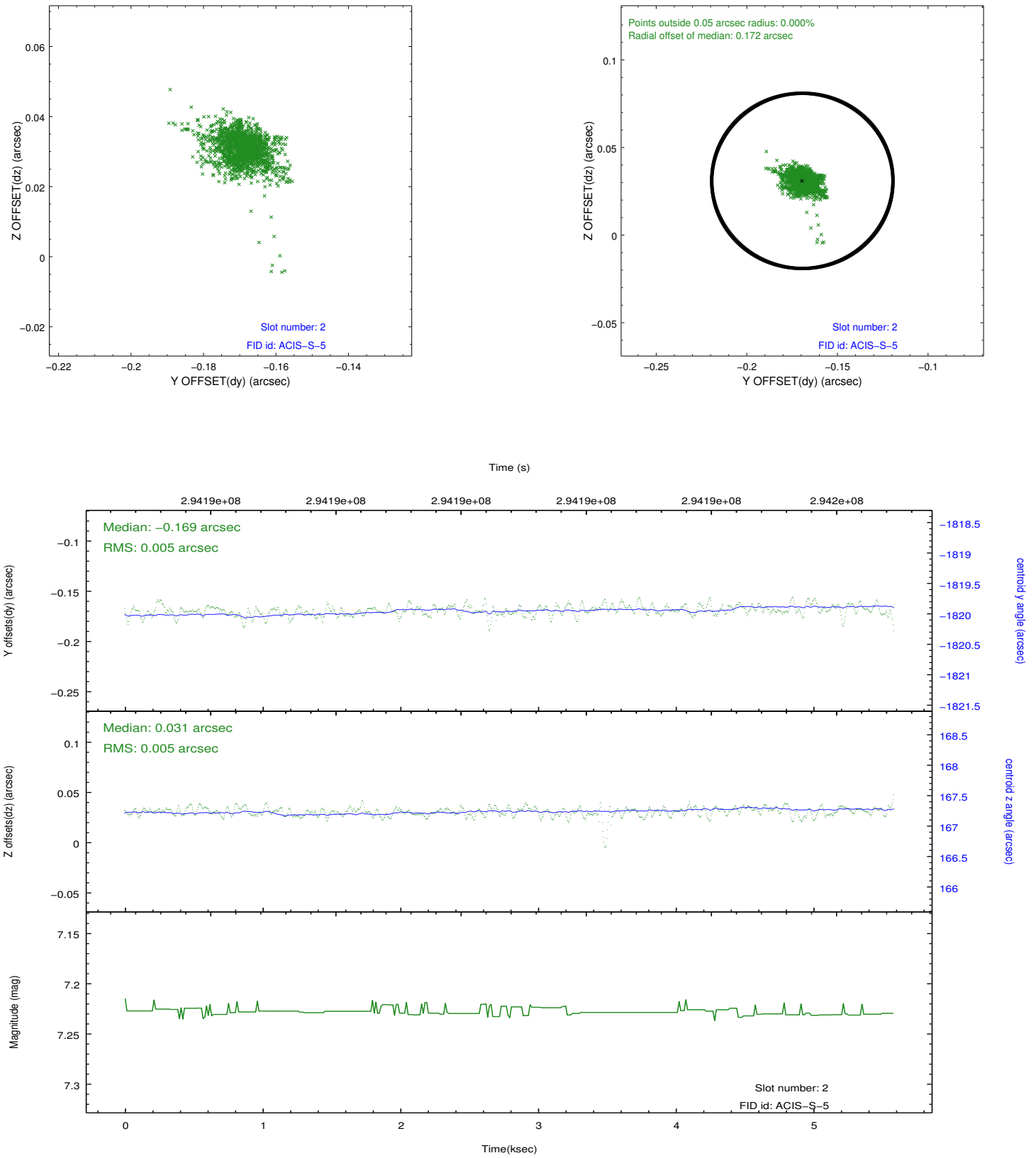
2.5.1 Slot 0



2.5.2 Slot 1



2.5.3 Slot 2



A Summary

A.1 Status

V&V Scientist	Joy Nichols
V&V Date (YYYY-MM-DD)	2012.04.24
V&V Edition	1
V&V Disposition and Status	OK
V&V Charge Time	5.15839998

A.2 Comments