

V&V Reference Report

L2 ASCDS Version : 7.6.10

Observation 791 - L2 Version 001
Chandra X-Ray Center

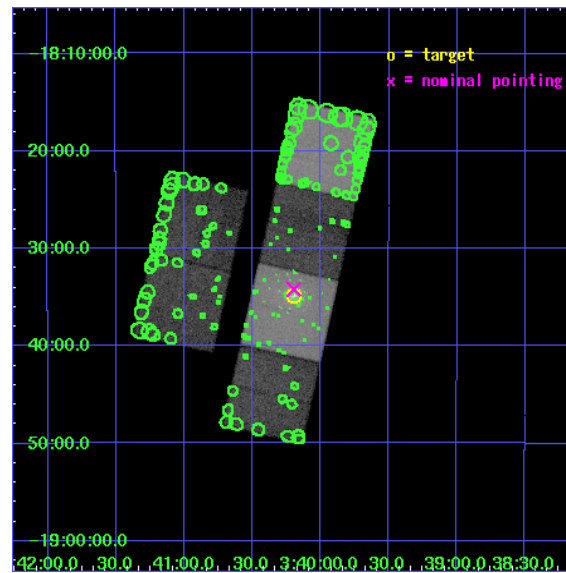
L2 Processing Date : Jun 5 2007

Contents

1	Front	2
2	OBI	3
2.1	OBI	3
2.1.1	Images	3
2.1.2	Bias	3
2.1.3	Parameters	4
2.1.4	Events	4
2.2	Compared Parameters	5
2.3	Aspect	6
2.4	Star Slots	9
2.4.1	Slot 3	9
2.4.2	Slot 4	10
2.4.3	Slot 5	11
2.4.4	Slot 6	12
2.4.5	Slot 7	13
2.5	FID Slots	14
2.5.1	Slot 0	14
2.5.2	Slot 1	15
2.5.3	Slot 2	16
3	Point Sources	17
A	Summary	18
A.1	Status	18
A.2	Comments	18

1 Front

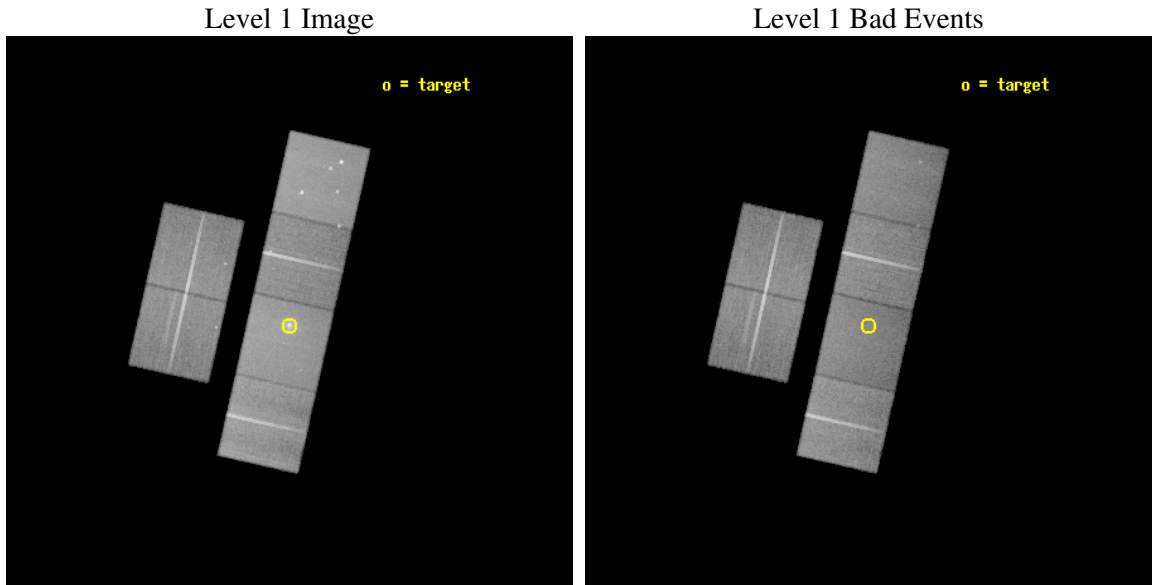
seq_num	600094
obs_id	791
title	ELLIPTICALS WITH VERY DISCREPANT GASEOUS & STELLAR ABUNDANCES
observer	Dr. Raymond White
object	NGC 1407
dtcycle	0
cycle	P
ra_targ	55.049583
dec_targ	-18.580278
ra_nom	55.049159260684
dec_nom	-18.570356806864
roll_nom	102.75158354149
revision	2
ontime	49196.718095437
livetime	48573.759628205
ontime2	49196.718095437
ontime3	49196.718125328
ontime5	49196.718095437
ontime6	49193.477085352
ontime7	49196.718095437
ontime8	49190.236155033
l2events	473529



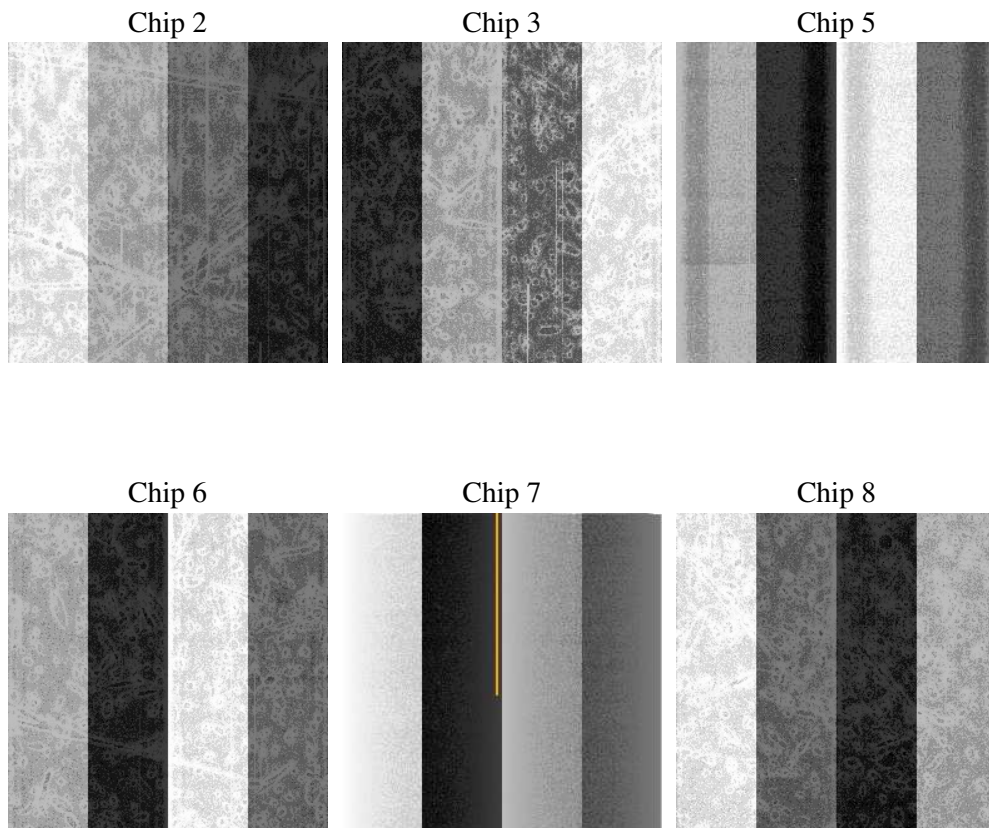
2 OBI

2.1 OBI

2.1.1 Images



2.1.2 Bias



2.1.3 Parameters

obi_num	0
ascdsver	7.6.10
caldsver	3.4.0
date	2007-06-05T05:36:59
revision	2

sched_exp_time	49250.000000
ontime	49196.718095437
ontime2	49196.718095437
ontime3	49196.718125328
ontime5	49196.718095437
ontime6	49193.477085352
ontime7	49196.718095437
ontime8	49190.236155033
l1events	1972904

2.1.4 Events

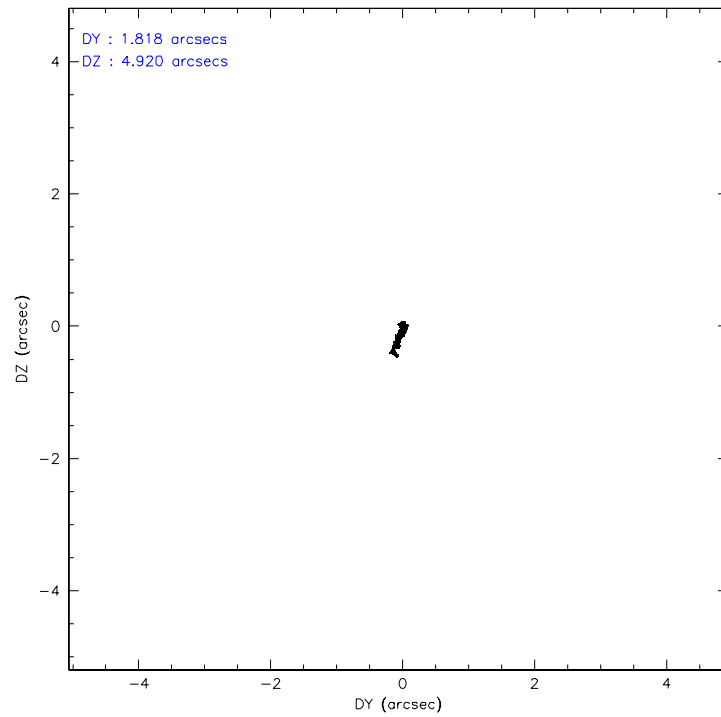
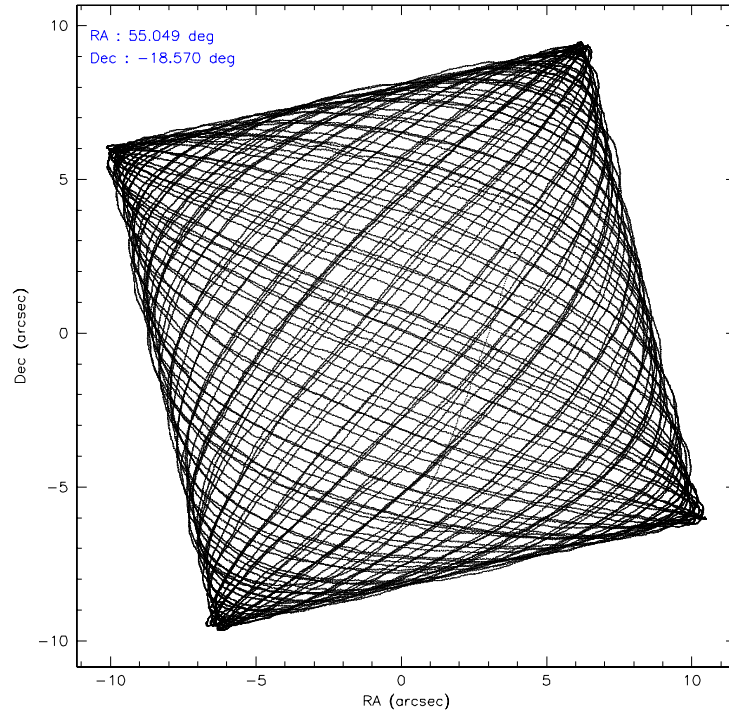
	ccd 2	ccd 3	ccd 5	ccd 6	ccd 7	ccd 8
level 1 events	285438	277283	388916	283785	378884	358598
rejected events	251034	242832	203397	246983	198722	277394
rejected %	87%	87%	52%	87%	52%	77%

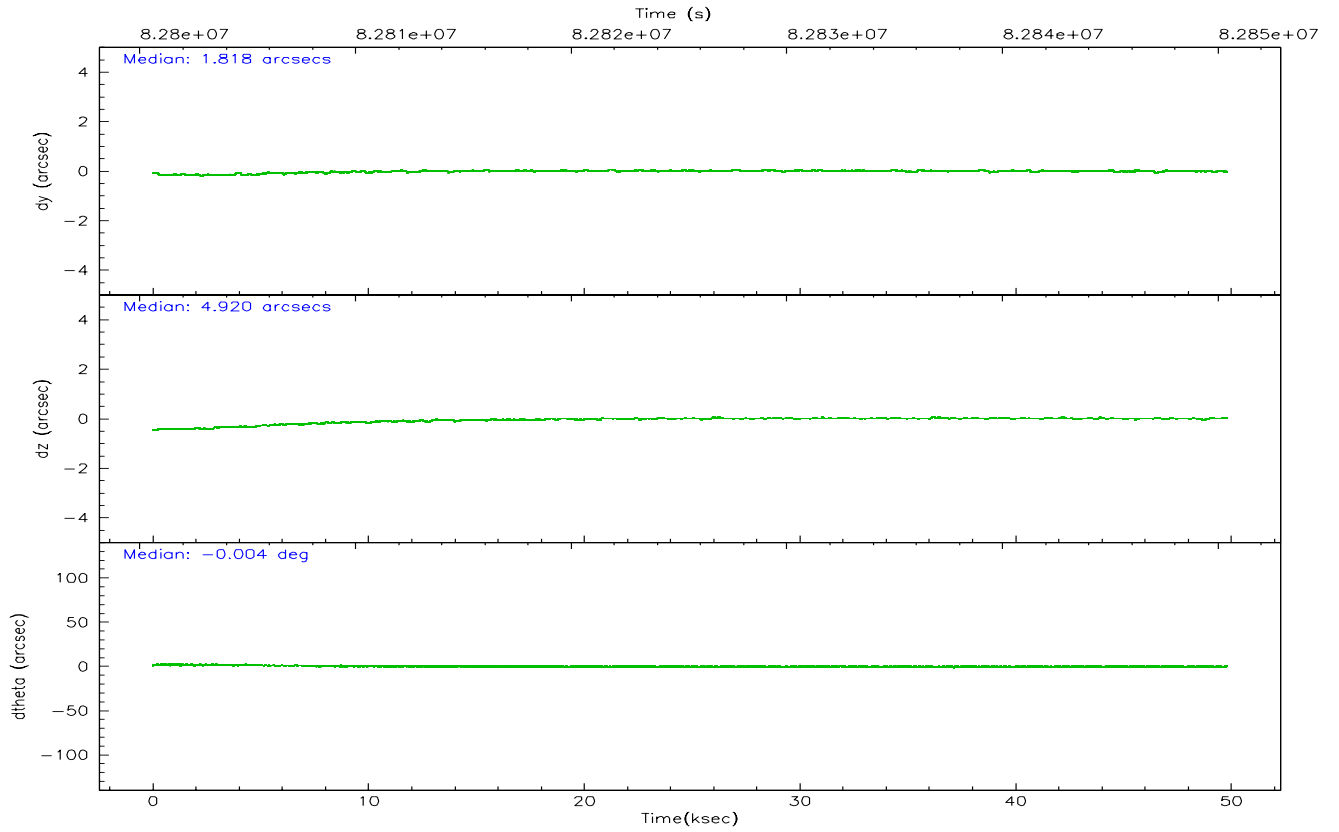
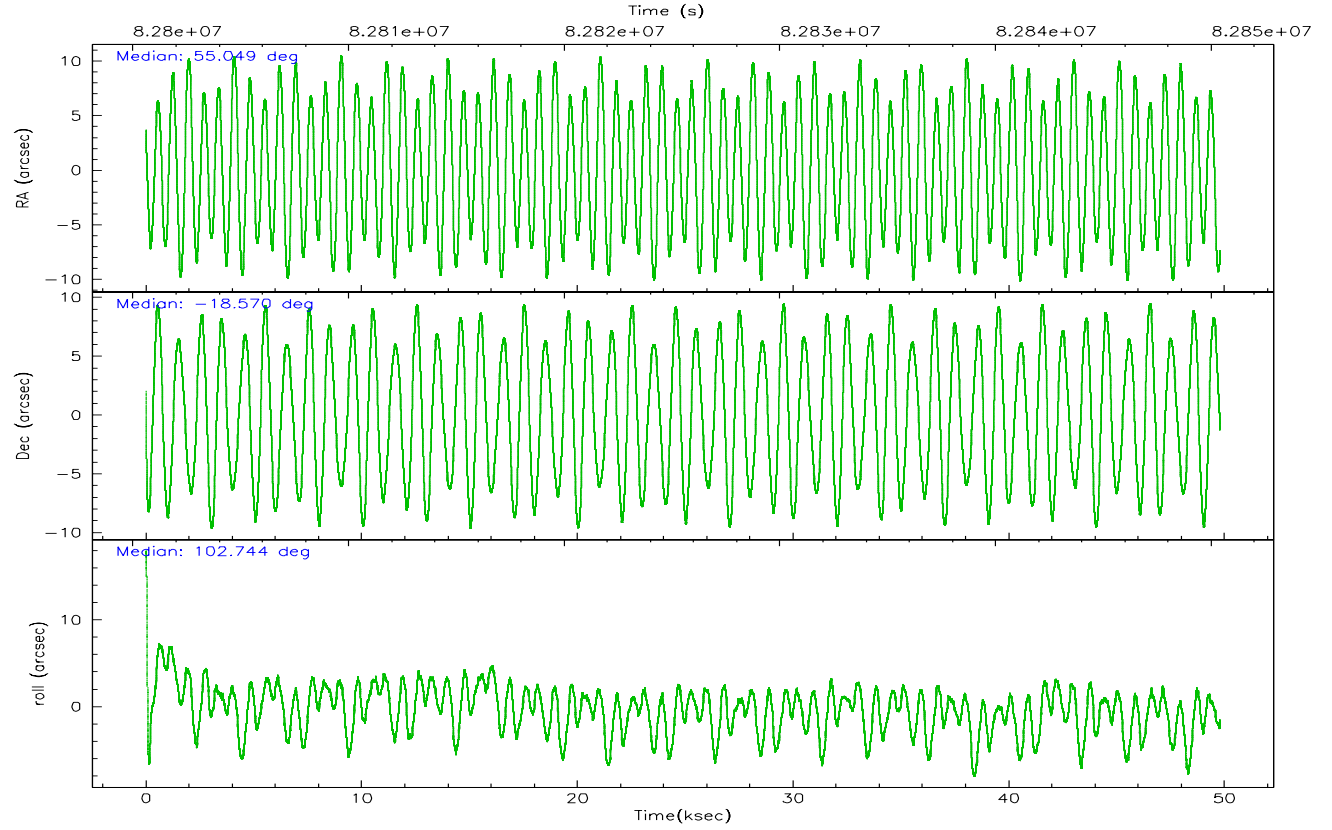
	ccd 2	ccd 3	ccd 5	ccd 6	ccd 7	ccd 8
grade 0 events	15344	15744	24627	16831	24082	28004
	5%	5%	6%	5%	6%	7%
grade 1 events	129	120	1020	141	345	216
	0%	0%	0%	0%	0%	0%
grade 2 events	7238	6872	51302	7080	36979	15987
	2%	2%	13%	2%	9%	4%
grade 3 events	2985	3062	8666	3308	17166	9630
	1%	1%	2%	1%	4%	2%
grade 4 events	3016	2980	8355	3193	17085	8904
	1%	1%	2%	1%	4%	2%
grade 5 events	9312	10054	28988	11026	32790	14351
	3%	3%	7%	3%	8%	4%
grade 6 events	5825	5795	92579	6394	84872	18681
	2%	2%	23%	2%	22%	5%
grade 7 events	241589	232656	173379	235812	165565	262825
	84%	83%	44%	83%	43%	73%

2.2 Compared Parameters

Parameter	Planned	Actual	Parameter	Planned	Actual
Instrument	ACIS	ACIS	Obspar format version number	6	6
Detector	ACIS-235678	ACIS-235678	Obspar file type	PREDICTED	ACTUAL
Grating	NONE	NONE	Obspar update status	NONE	UPDATED
Data mode	VFAINT	VFAINT	Number of optional ACIS chips dropped	0	0
Observation mode	POINTING	POINTING	On-chip summing requested	N	N
Pointing RA	55.068893	55.0491592606836	Subarray requested	NONE	NONE
Pointing Dec	-18.590364	-18.57035680686404	Alternating exposures requested	N	N
Pointing Roll	102.601237	102.7515835414914	Primary exposure time	3.200000	3.2
SIM focus pos (mm)	-0.684267	-0.6828225247311905			
SIM defocus (mm)	0	0.001444936568705701			
SIM translation stage pos (mm)	-190.132523	-190.1425803651734			
SIM translation stage offset (mm)	0	0.01005778216563158			
Observation start time	82801165.184000	82799918.97583			
Observation start date	2000-08-16T08:18:21	2000-08-16T07:58:38			
Observation end time	82850415.184000	82850912.72774			
Observation end date	2000-08-16T21:59:11	2000-08-16T22:08:32			
Read mode	TIMED	TIMED			

2.3 Aspect



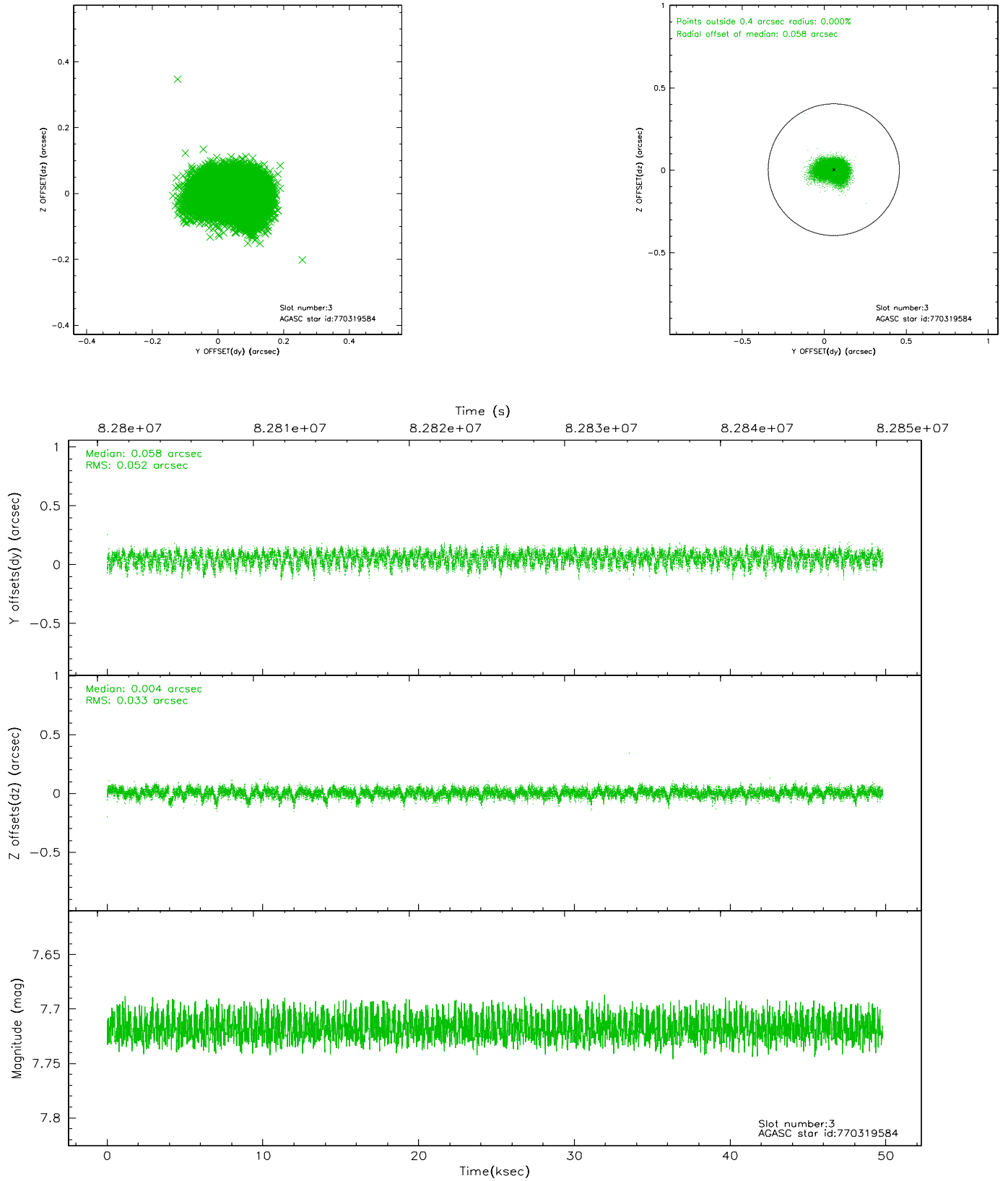


Slot Statistics

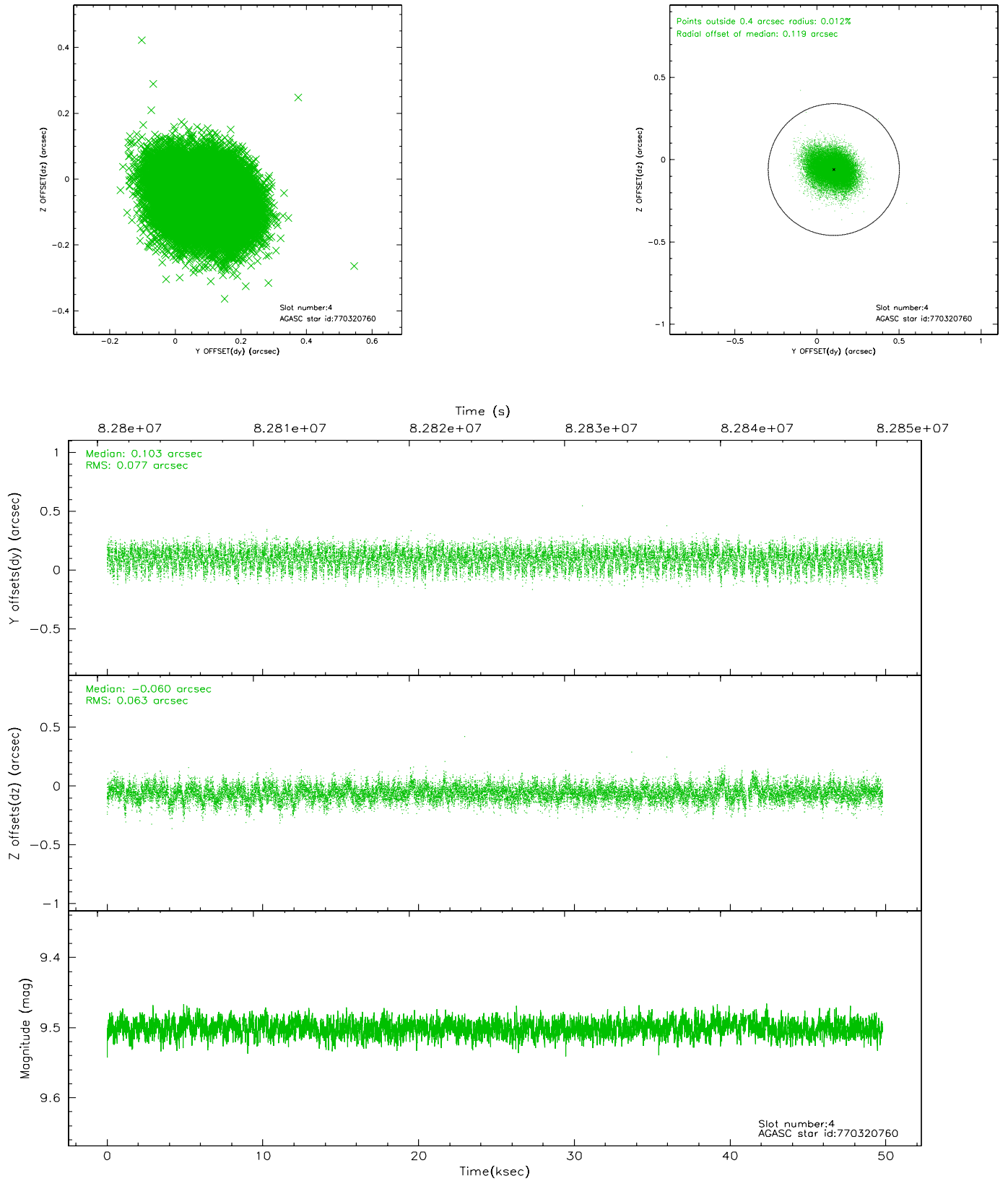
slot	status	id	mag	n_pts	med_dy	med_dz	dr1	dr2	ra	dec	mean_y	mean_z
0	FID	ACIS-S-2	7.11	12145	-0.021	0.017	0.007	0.011	0.000000	0.000000	-754.43	-1725.90
1	FID	ACIS-S-4	7.21	12146	-0.050	0.006	0.005	0.009	0.000000	0.000000	2158.82	182.60
2	FID	ACIS-S-5	7.24	12146	0.041	-0.014	0.007	0.012	0.000000	0.000000	-1807.24	176.21
3	GUIDE	770319584	7.72	24291	0.058	0.004	0.064	0.106	54.878150	-18.998334	-1291.97	954.54
4	GUIDE	770320760	9.50	24199	0.103	-0.060	0.107	0.171	54.620052	-18.745809	-214.23	1616.33
5	GUIDE	770310608	9.35	24210	-0.266	0.136	0.101	0.163	55.292312	-17.892162	2285.54	-1294.22
6	GUIDE	770311424	10.35	24270	-0.008	0.200	0.142	0.245	55.229950	-18.396118	562.46	-688.61
7	GUIDE	770318936	9.61	24284	0.109	-0.286	0.112	0.185	54.476249	-19.111423	-1394.20	2377.50

2.4 Star Slots

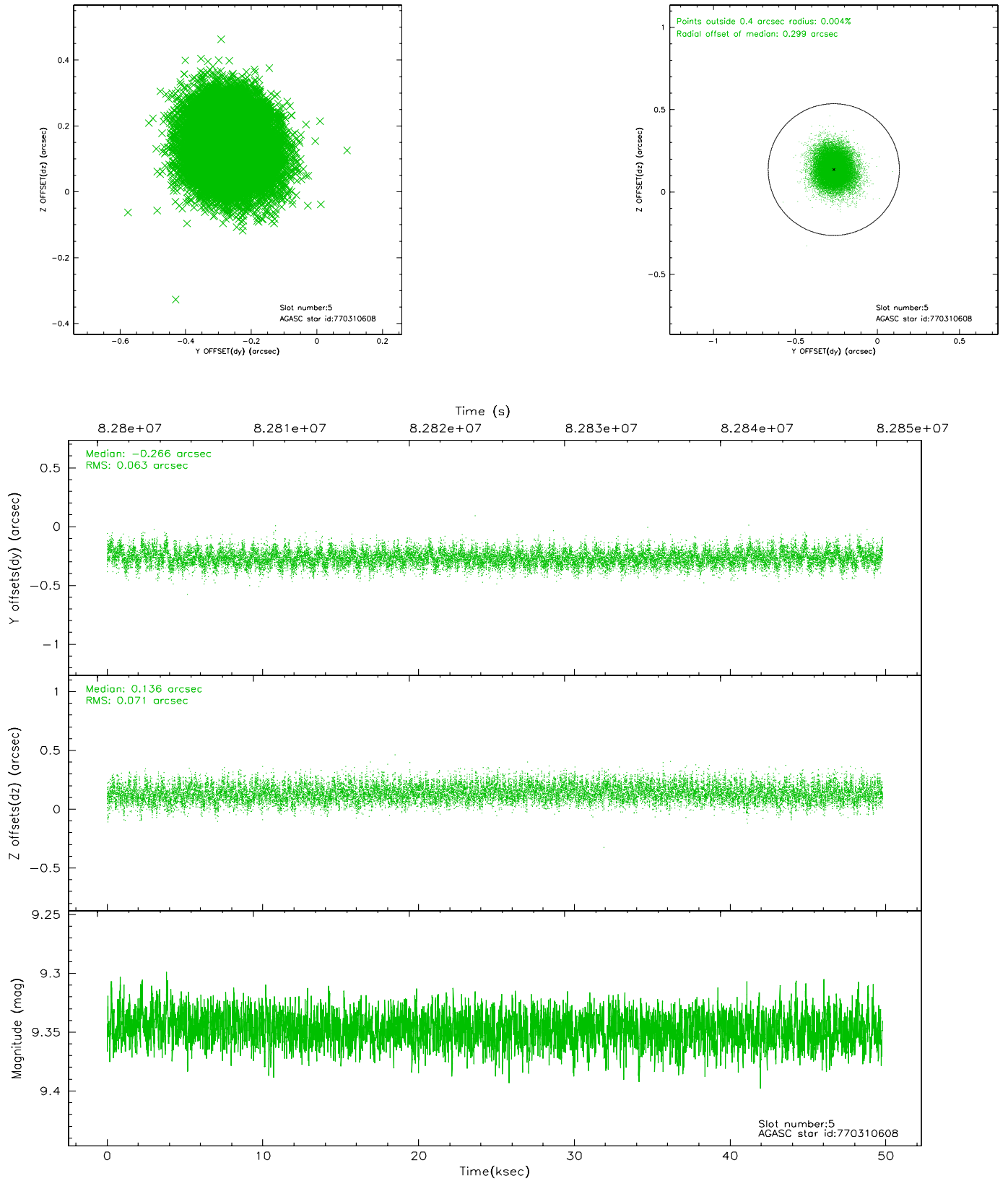
2.4.1 Slot 3



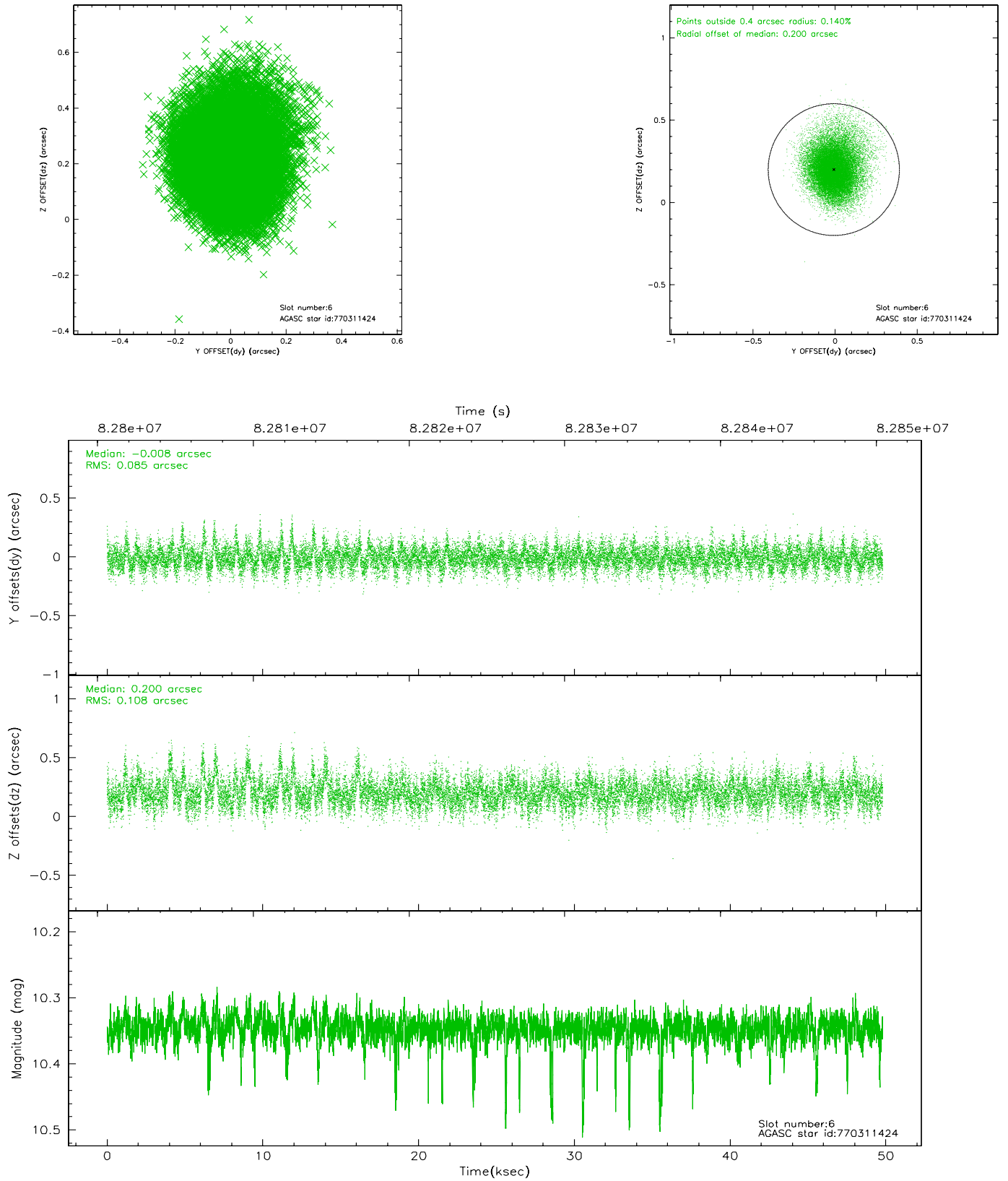
2.4.2 Slot 4



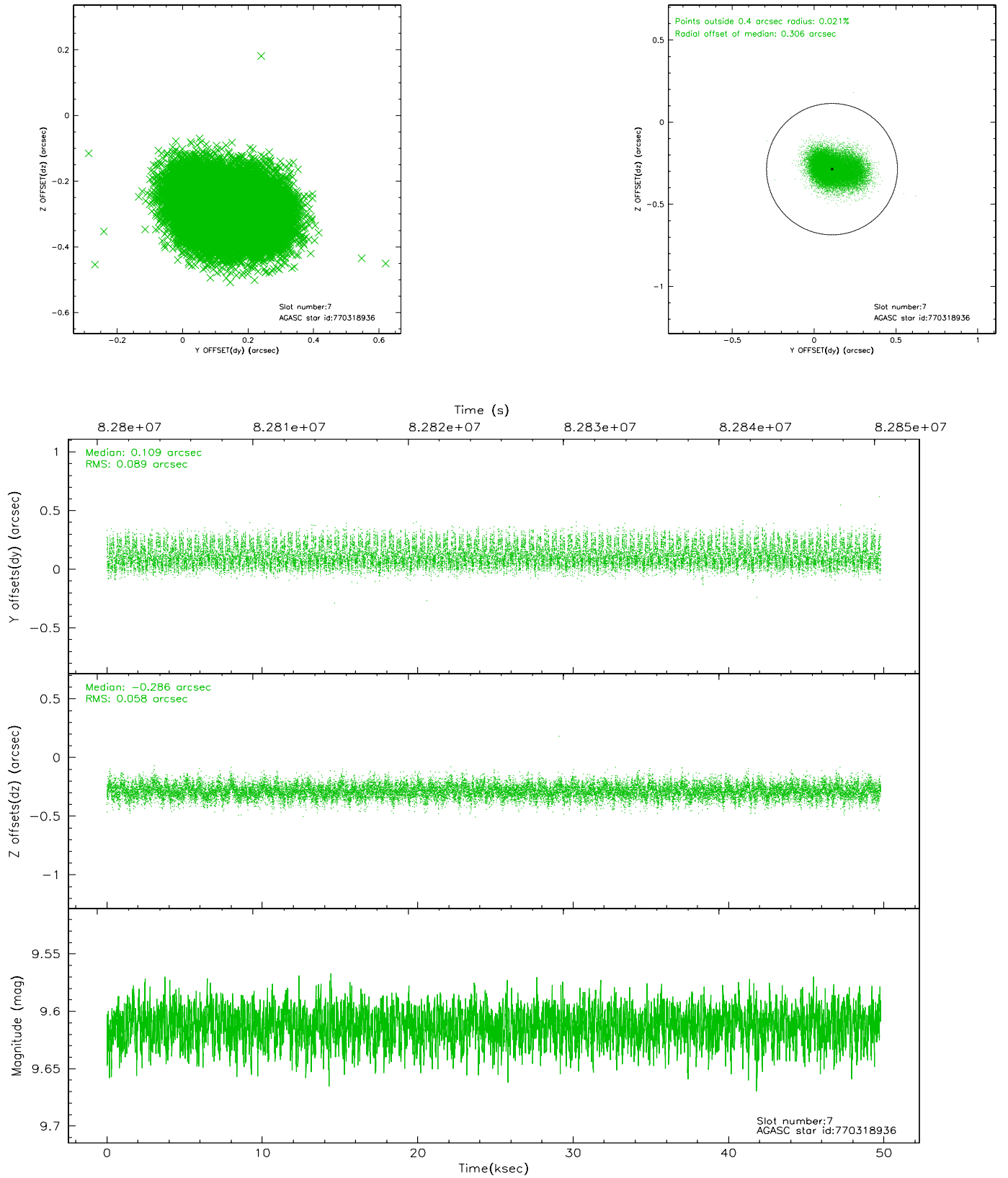
2.4.3 Slot 5



2.4.4 Slot 6

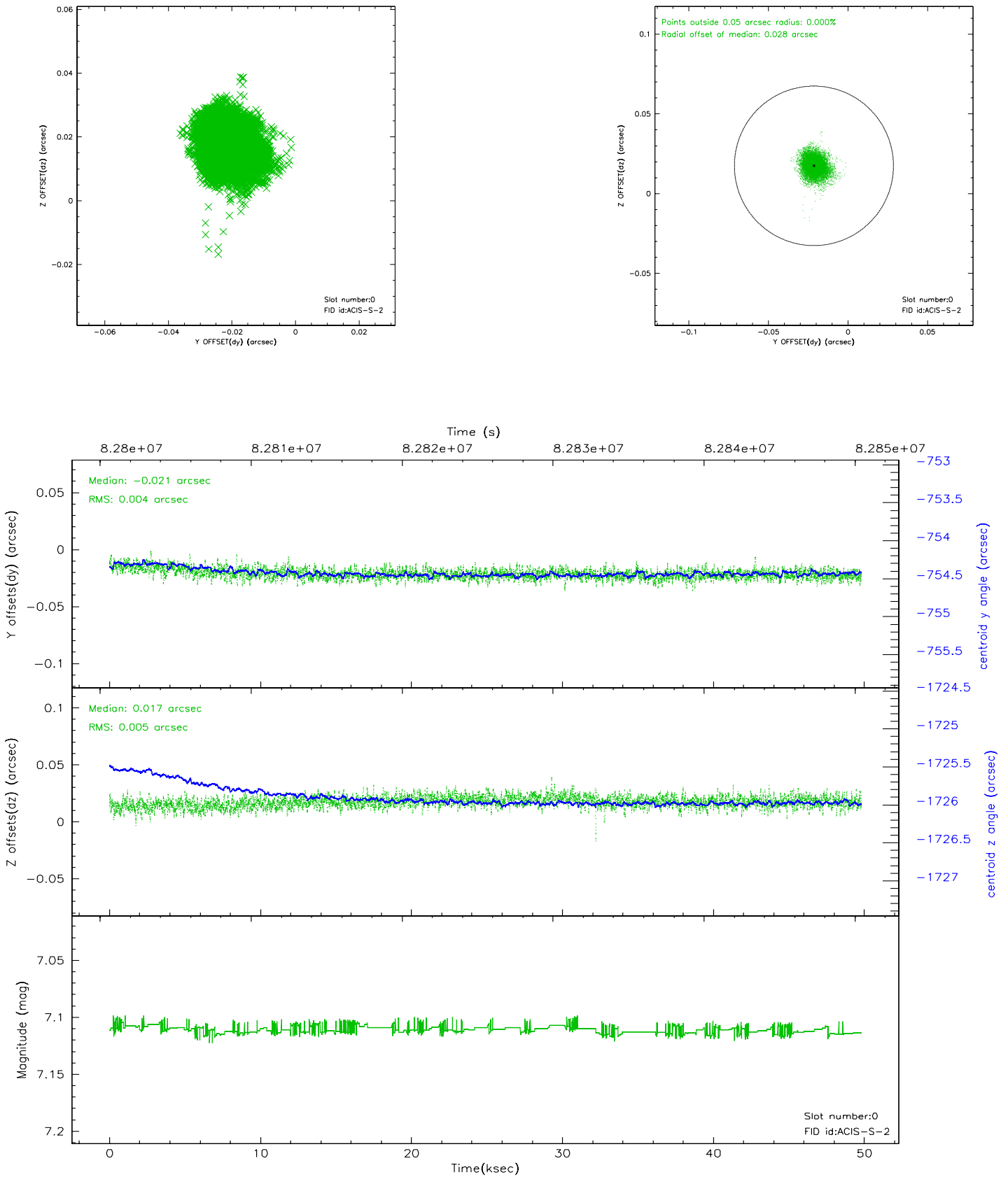


2.4.5 Slot 7

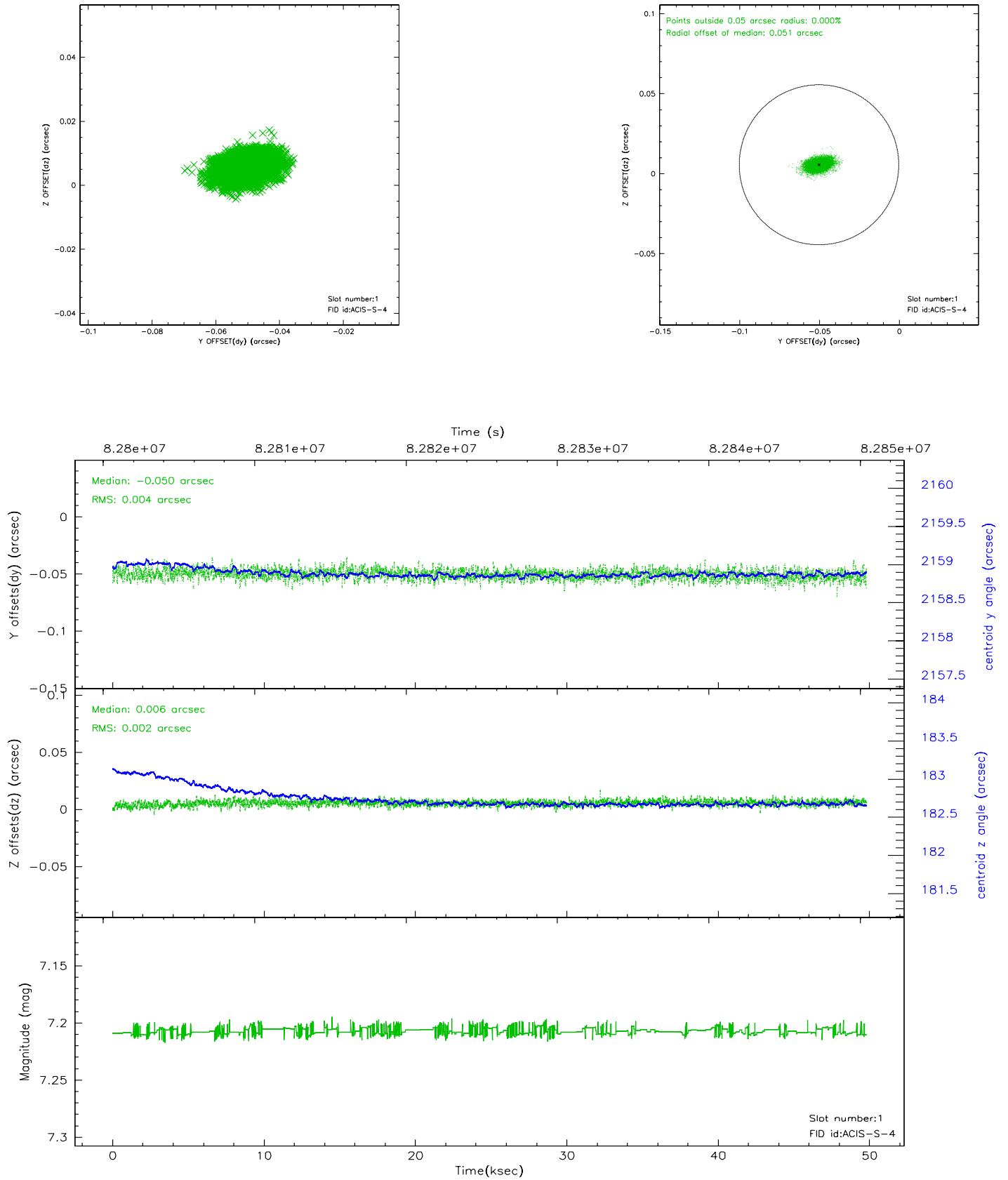


2.5 FID Slots

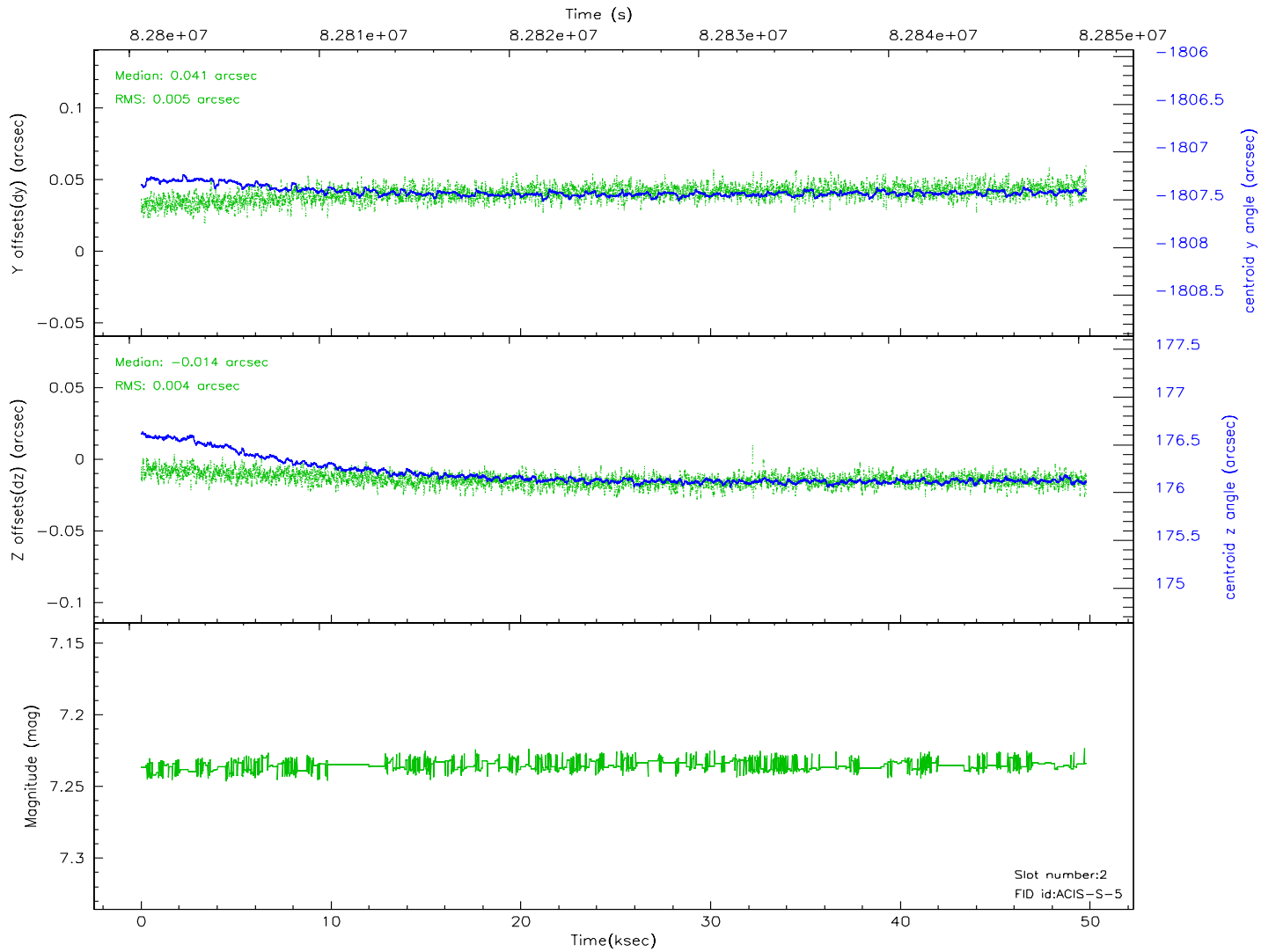
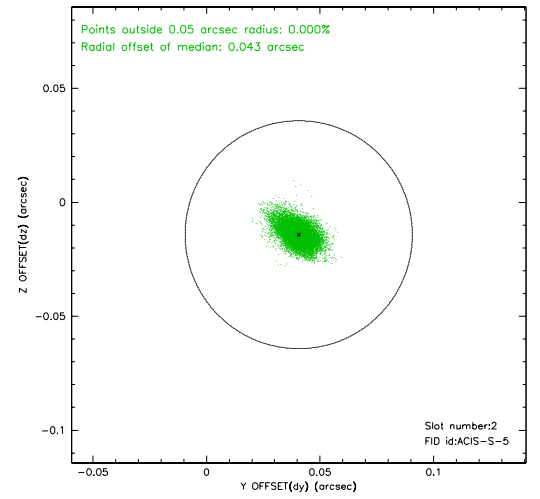
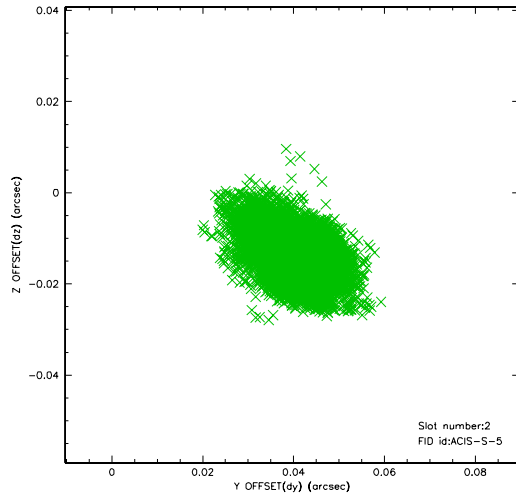
2.5.1 Slot 0



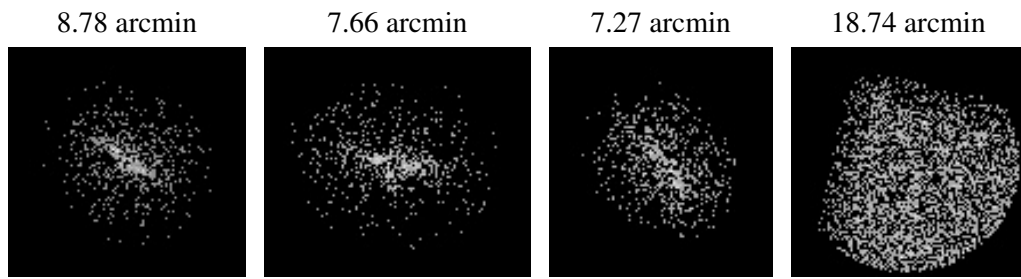
2.5.2 Slot 1



2.5.3 Slot 2



3 Point Sources



A Summary

A.1 Status

V&V Scientist	Jen Lauer
V&V Date (YYYY-MM-DD)	2007.06.05
V&V Edition	1
V&V Disposition and Status	OK
V&V Charge Time	49.196

A.2 Comments