

# V&V Reference Report

## L2 ASCDS Version : 8.4.4

Observation 7701 - L2 Version 3  
Chandra X-Ray Center

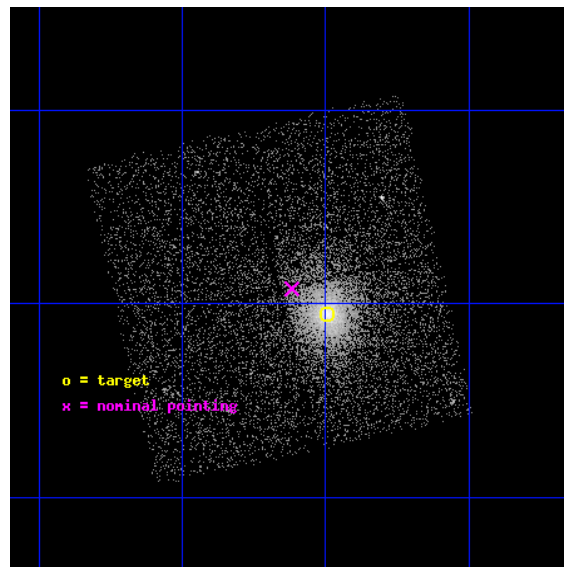
L2 Processing Date : Apr 20 2012

## Contents

<b>1</b>	<b>Front</b>	<b>2</b>
<b>2</b>	<b>OBI</b>	<b>3</b>
2.1	OBI . . . . .	3
2.1.1	Images . . . . .	3
2.1.2	Bias . . . . .	3
2.1.3	Parameters . . . . .	4
2.1.4	Events . . . . .	4
2.2	Compared Parameters . . . . .	5
2.3	Aspect . . . . .	6
2.4	Star Slots . . . . .	9
2.4.1	Slot 3 . . . . .	9
2.4.2	Slot 4 . . . . .	10
2.4.3	Slot 5 . . . . .	11
2.4.4	Slot 6 . . . . .	12
2.4.5	Slot 7 . . . . .	13
2.5	FID Slots . . . . .	14
2.5.1	Slot 0 . . . . .	14
2.5.2	Slot 1 . . . . .	15
2.5.3	Slot 2 . . . . .	16
<b>A</b>	<b>Summary</b>	<b>17</b>
A.1	Status . . . . .	17
A.2	Comments . . . . .	17

# 1 Front

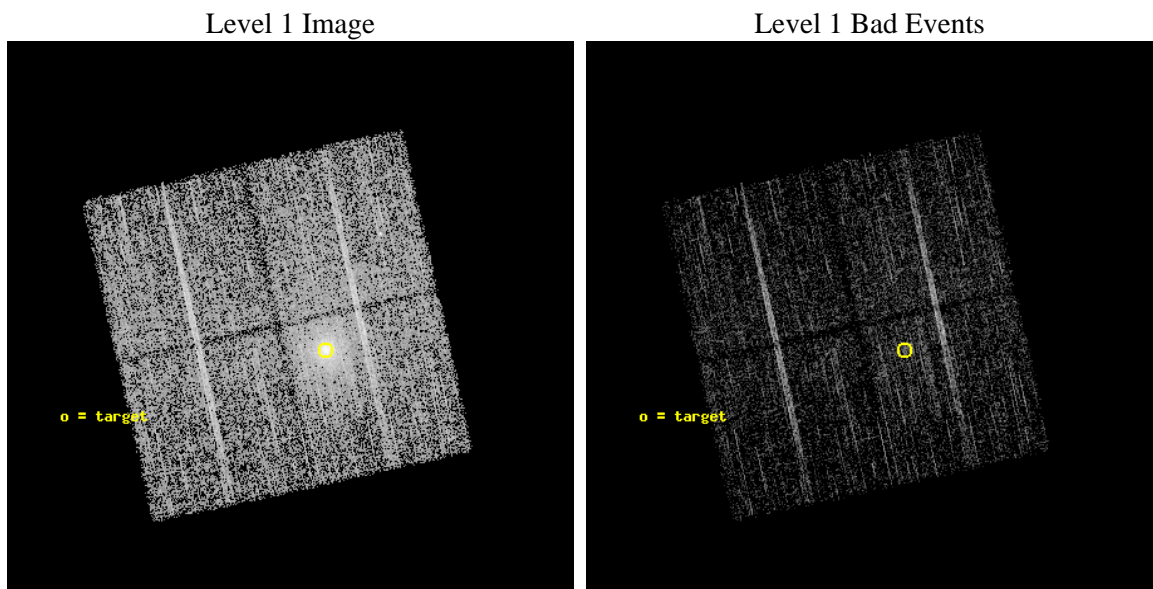
seq_num	701369	Sequence number
obs_id	7701	Observation id
title	Snapshot Survey for X-ray Outbursts in Rich Clusters of Galaxies	P
observer	Professor Gordon Garmire	Principal investigator
object	Abell1689	Source name
dtcycle	0	&#160
cycle	P	events from which exps? Prim/Second/Both
ra_targ	197.87375	Observer's specified target RA [deg]
dec_targ	-1.341944	Observer's specified target Dec [deg]
ra_nom	197.90430508702	Nominal RA [deg]
dec_nom	-1.3203706068237	Nominal Dec [deg]
roll_nom	77.454112806084	Nominal Roll [deg]
revision	3	Processing version of data
ontime	5058.4480204582	Sum of GTIs [s]
livetime	4992.3556730957	Livetime [s]
ontime0	5058.3249004483	Sum of GTIs [s]
ontime1	5058.3659404516	Sum of GTIs [s]
ontime2	5058.4069804549	Sum of GTIs [s]
ontime3	5058.4480204582	Sum of GTIs [s]
l2events	20883	Number of level 2 events



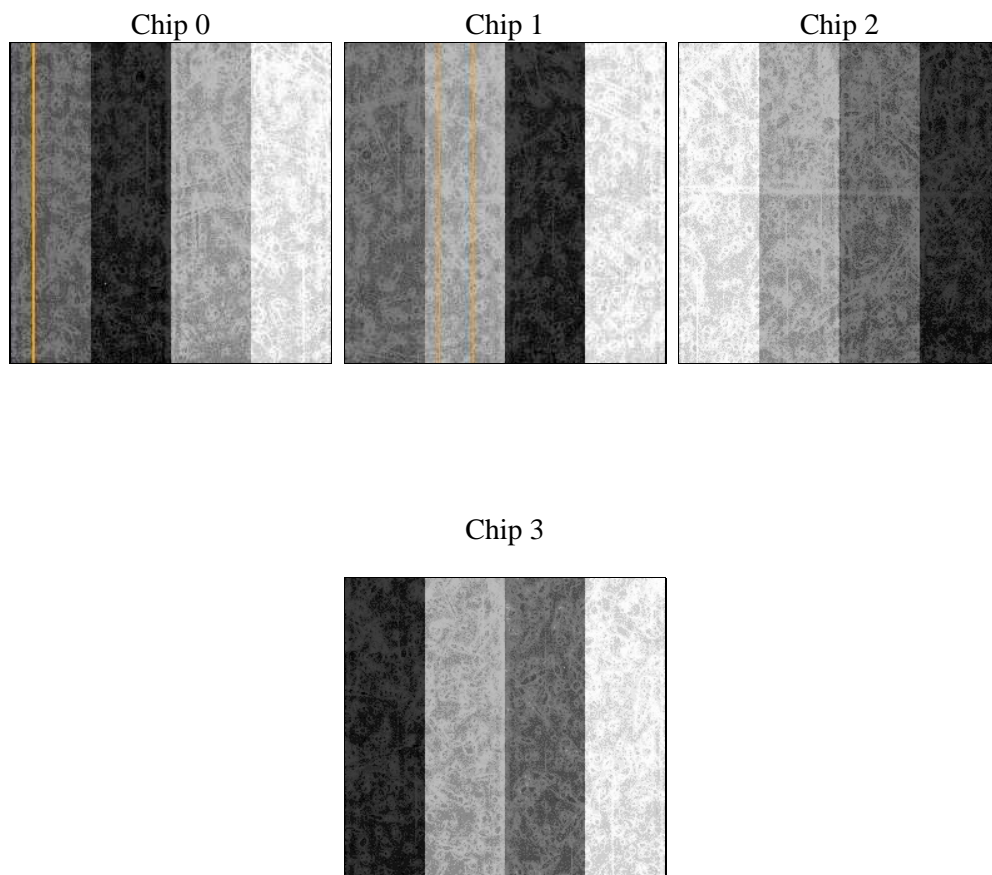
## 2 OBI

### 2.1 OBI

#### 2.1.1 Images



#### 2.1.2 Bias



### 2.1.3 Parameters

obi_num	0	Obi number	sched_exp_time	5000.000000	[s] Scheduled observation exposure time
ascdsver	8.4.4	Processing system revision	ontime	5058.4480204582	Sum of GTIs [s]
caldsver	4.4.9	&#160	ontime0	5058.3249004483	Sum of GTIs [s]
date	2012-04-21T01:15:22	Date and time of file creation	ontime1	5058.3659404516	Sum of GTIs [s]
revision	3	Processing version of data	ontime2	5058.4069804549	Sum of GTIs [s]
			ontime3	5058.4480204582	Sum of GTIs [s]
			l1events	141824	Number of level 1 events

### 2.1.4 Events

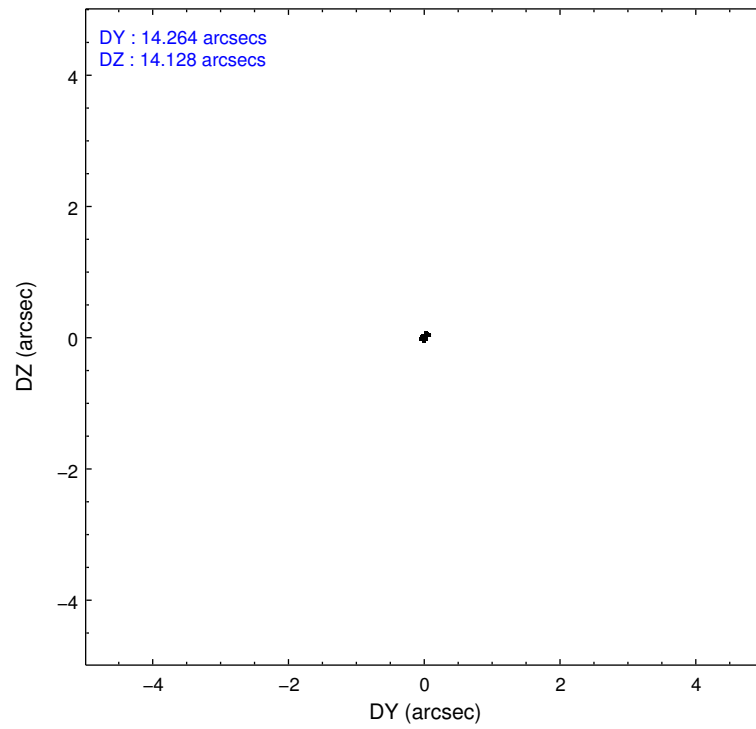
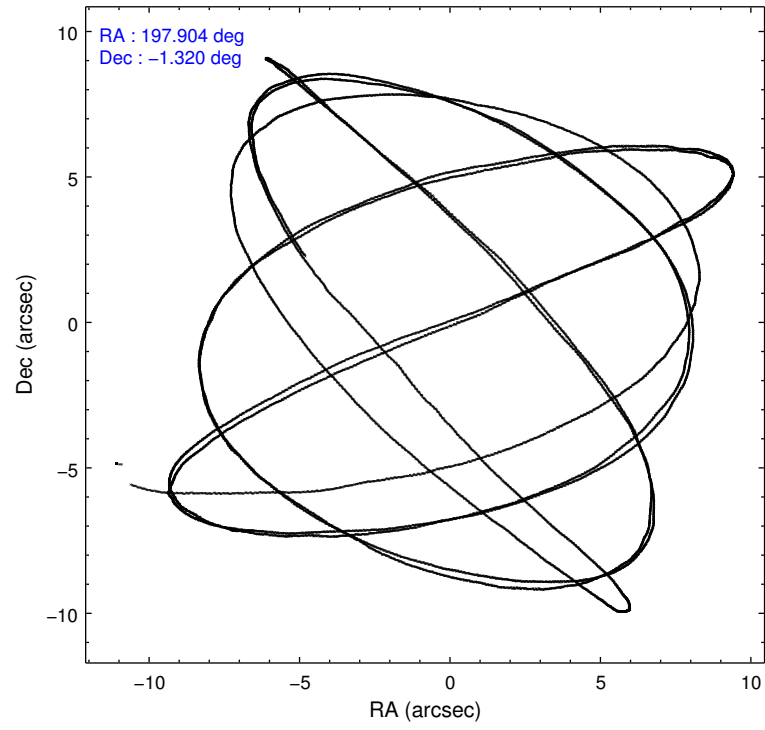
	ccd 0	ccd 1	ccd 2	ccd 3
level 1 events	31380	29575	35892	44977
rejected events	28387	26202	32038	31559
rejected %	90%	88%	89%	70%

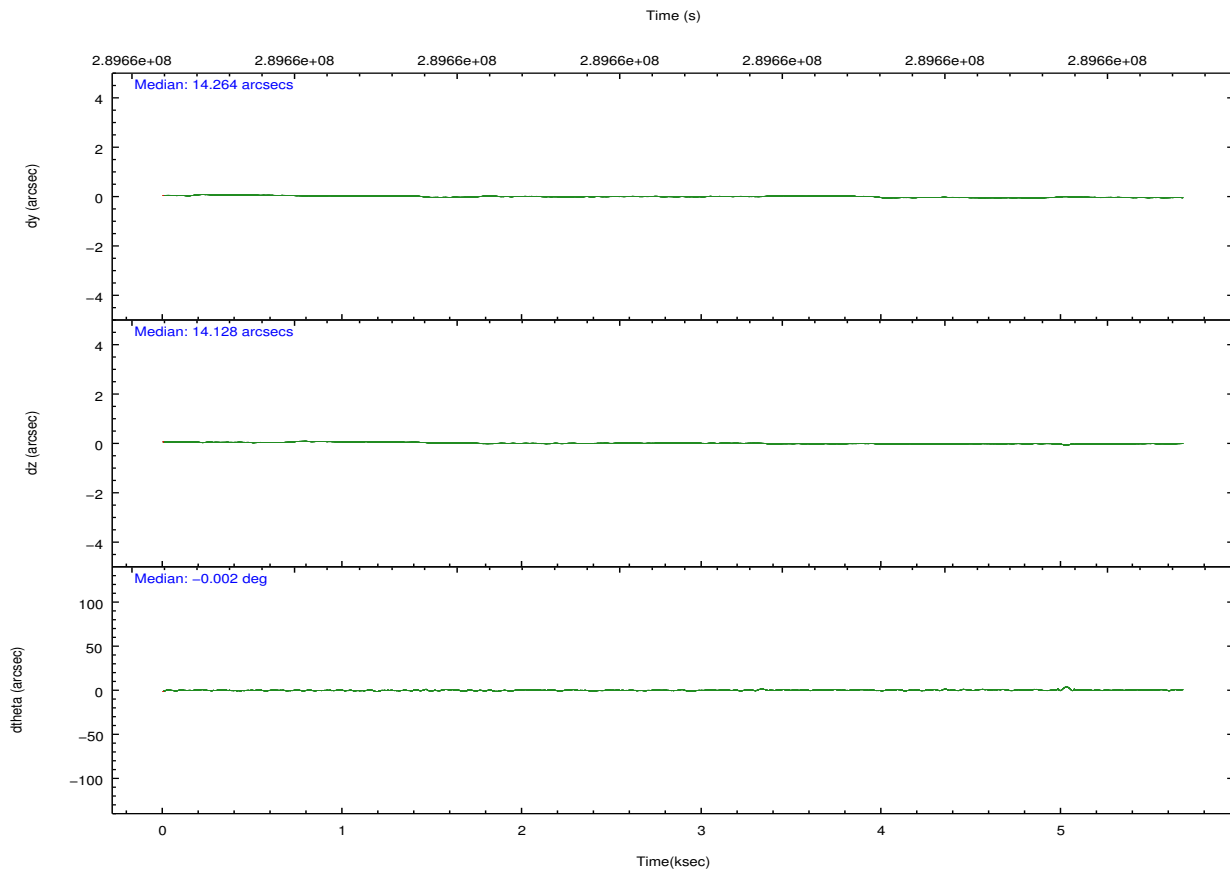
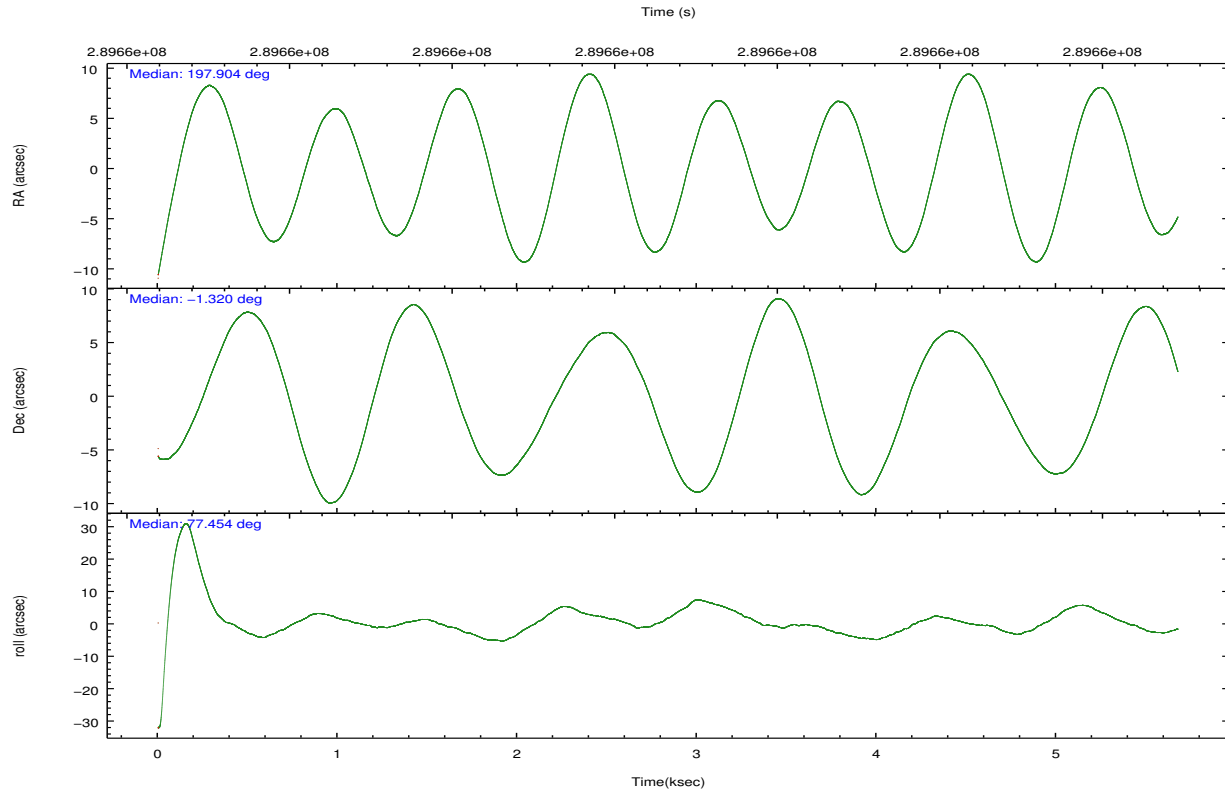
	ccd 0	ccd 1	ccd 2	ccd 3
grade 0 events	1265	1447	2003	9742
	4%	4%	5%	21%
grade 1 events	20	14	24	90
	0%	0%	0%	0%
grade 2 events	698	662	721	1715
	2%	2%	2%	3%
grade 3 events	324	362	362	639
	1%	1%	1%	1%
grade 4 events	292	363	378	609
	0%	1%	1%	1%
grade 5 events	558	623	521	648
	1%	2%	1%	1%
grade 6 events	418	541	405	729
	1%	1%	1%	1%
grade 7 events	27805	25563	31478	30805
	88%	86%	87%	68%

## 2.2 Compared Parameters

Parameter	Planned	Actual	Parameter	Planned	Actual
Instrument	ACIS	ACIS	Obspar format version number	7	7
Detector	ACIS-0123	ACIS-0123	Obspar file type	PREDICTED	ACTUAL
Grating	NONE	NONE	Obspar update status	NONE	UPDATED
Data mode	VFAINT	VFAINT	Number of optional ACIS chips dropped	0	0
Observation mode	POINTING	POINTING	On-chip summing requested	N	N
[deg] Pointing RA	197.912682	197.9043050870158	Subarray requested	NONE	NONE
[deg] Pointing Dec	-1.346649	-1.320370606823705	Alternating exposures requested	N	N
[deg] Pointing Roll	77.245758	77.45411280608356	[s] Primary exposure time	0.000000	3.1
[mm] SIM focus pos	-0.782348	-0.7809083437167272			
[mm] SIM defocus	0	0.001439871863259334			
[mm] SIM translation stage pos	-233.592463	-233.5874344608287			
[mm] SIM translation stage offset	0	-0.005018542100998502			
[s] Observation start time (MET)	289657162.184000	289656048.62364			
Observation start date	2007-03-07T12:18:17	2007-03-07T12:00:48			
[s] Observation end time (MET)	289662162.184000	289662901.26146			
Observation end date	2007-03-07T13:41:37	2007-03-07T13:55:01			
Read mode	TIMED	TIMED			

## 2.3 Aspect



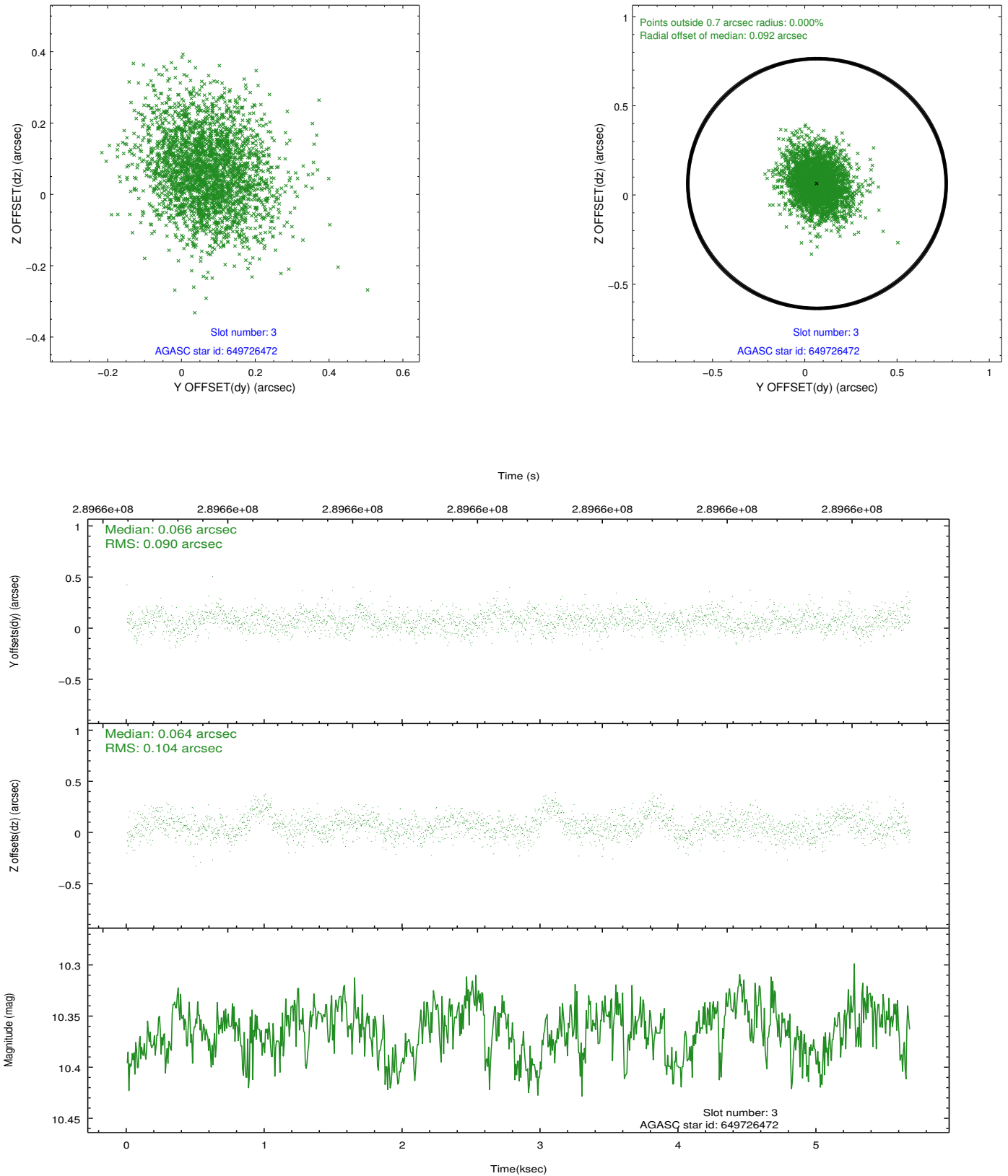


### Slot Statistics

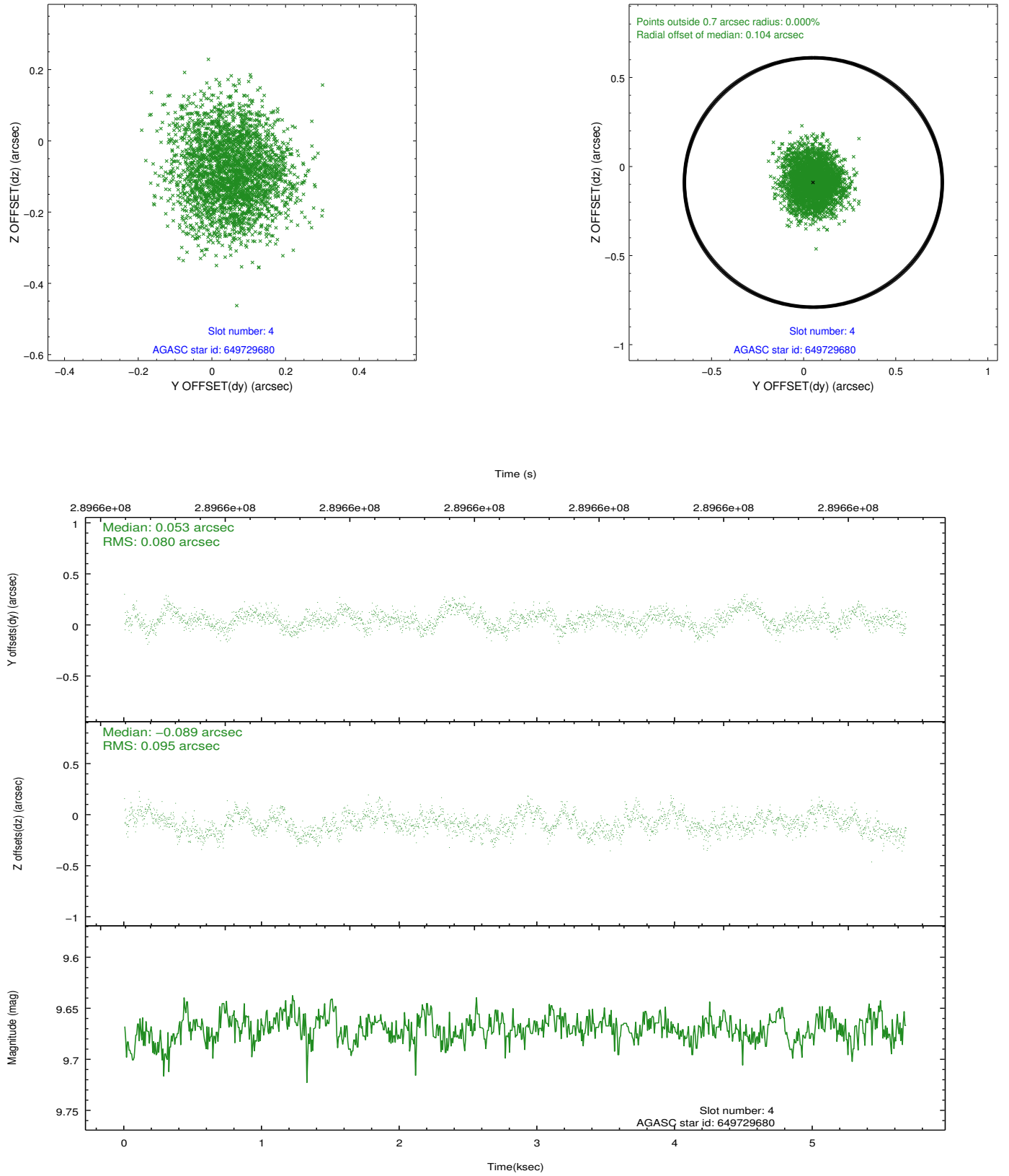
slot	status	id	mag	n_pts	med_dy	med_dz	dr1	dr2	ra	dec	mean_y	mean_z
0	FID	ACIS-I-1	7.23	1385	0.039	0.006	0.006	0.011	0.000000	0.000000	925.26	-837.70
1	FID	ACIS-I-5	7.23	1385	-0.233	0.041	0.006	0.010	0.000000	0.000000	-1822.55	1059.27
2	FID	ACIS-I-6	7.24	1385	0.103	0.023	0.006	0.011	0.000000	0.000000	389.70	1704.97
3	GUIDE	649726472	10.36	2770	0.066	0.064	0.144	0.239	197.403429	-1.852261	-2180.28	1385.42
4	GUIDE	649729680	9.67	2766	0.053	-0.089	0.133	0.209	197.477731	-1.403690	-547.09	1481.77
5	GUIDE	649856976	9.86	2751	0.102	0.095	0.163	0.273	197.988518	-1.476151	-395.00	-368.38
6	GUIDE	649858864	9.60	2760	-0.069	-0.122	0.195	0.313	197.684428	-0.695156	2105.57	1319.95
7	GUIDE	649860032	8.93	2767	-0.131	0.060	0.079	0.131	197.517008	-0.616758	2248.48	1970.39

## 2.4 Star Slots

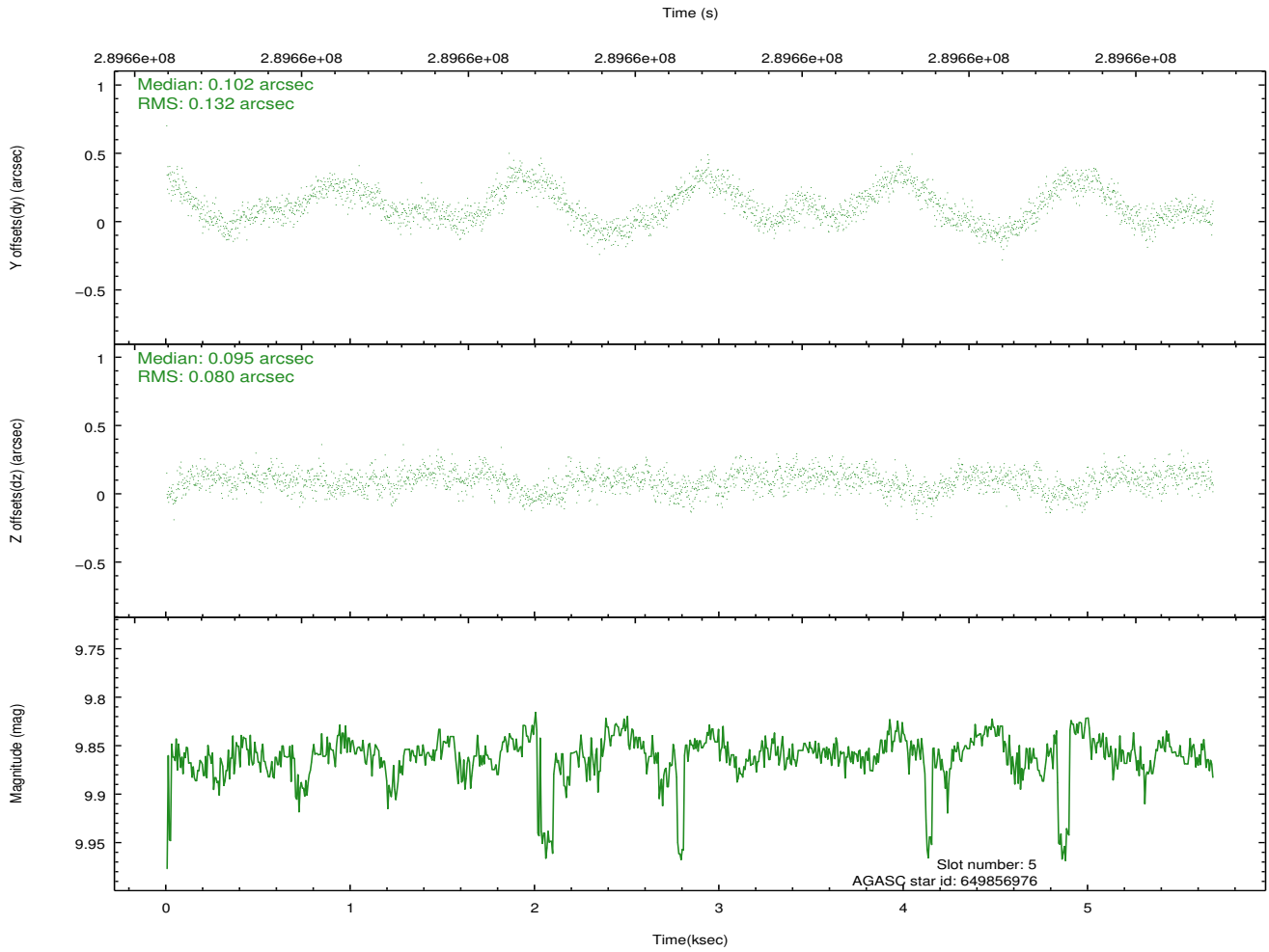
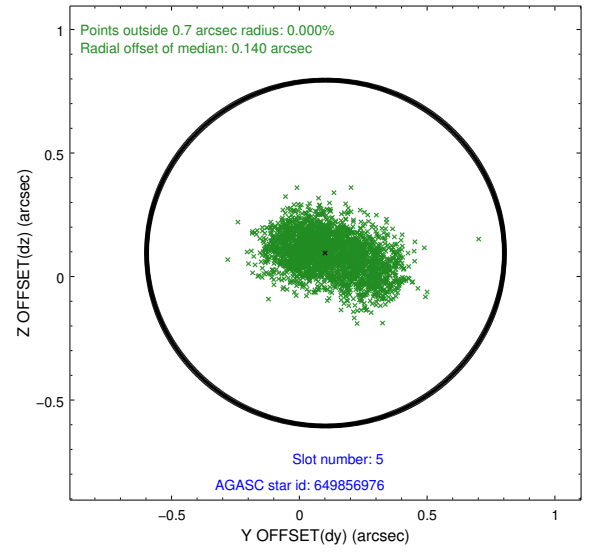
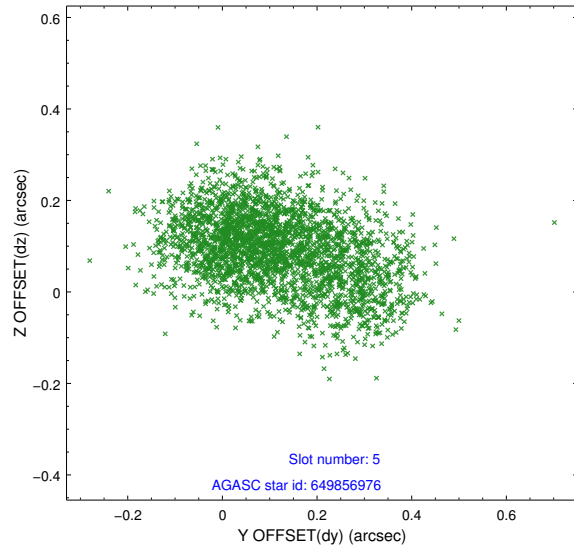
### 2.4.1 Slot 3



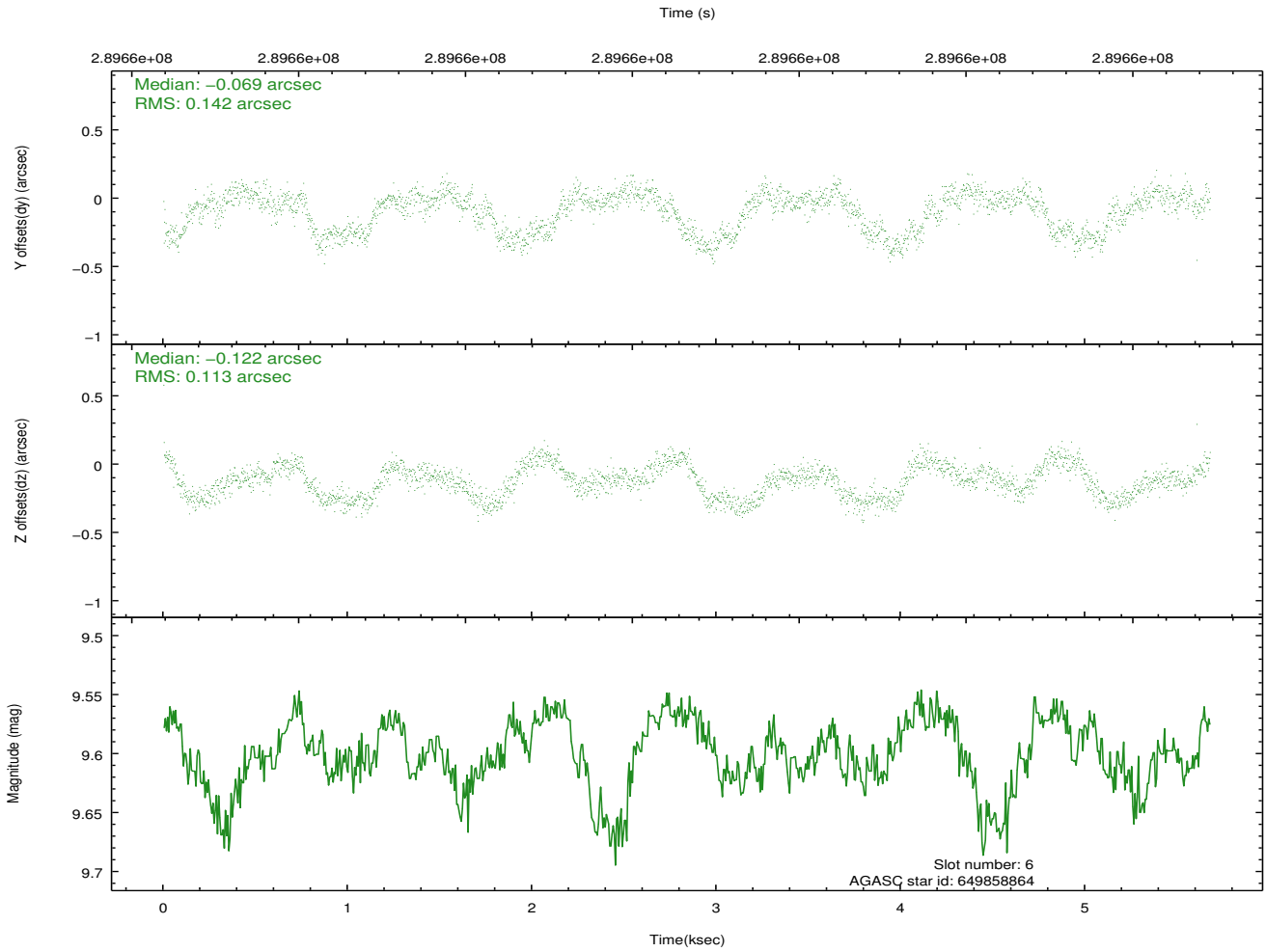
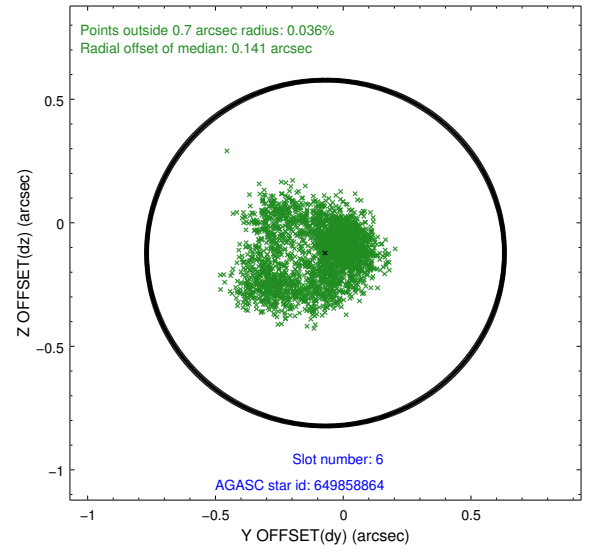
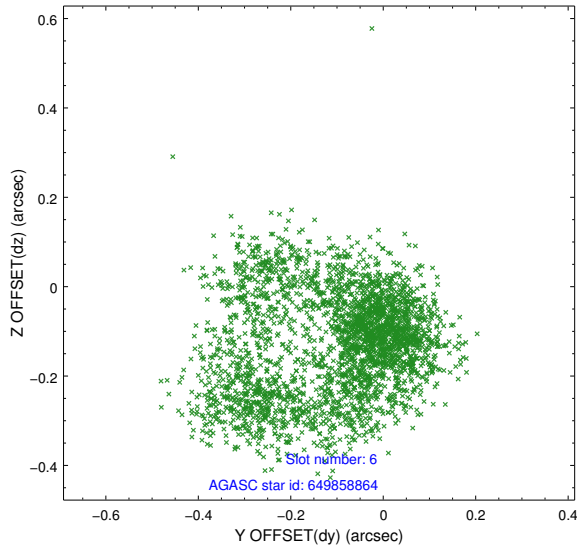
## 2.4.2 Slot 4



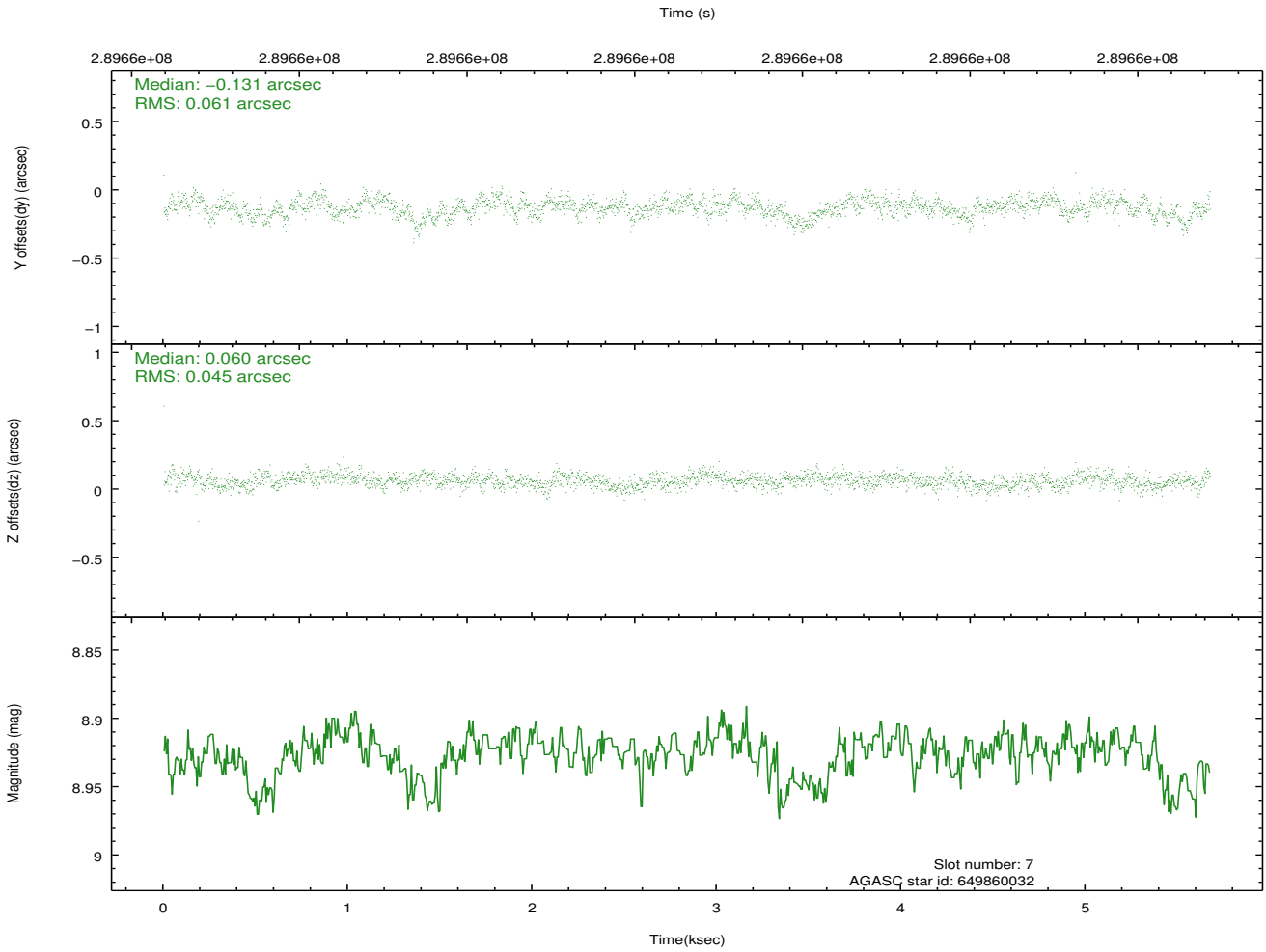
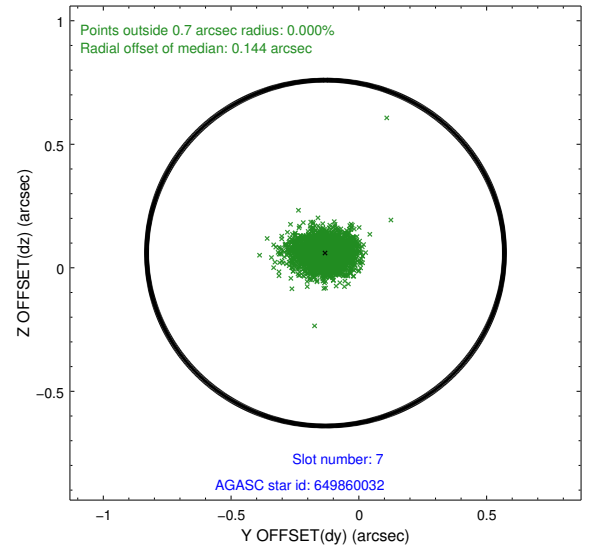
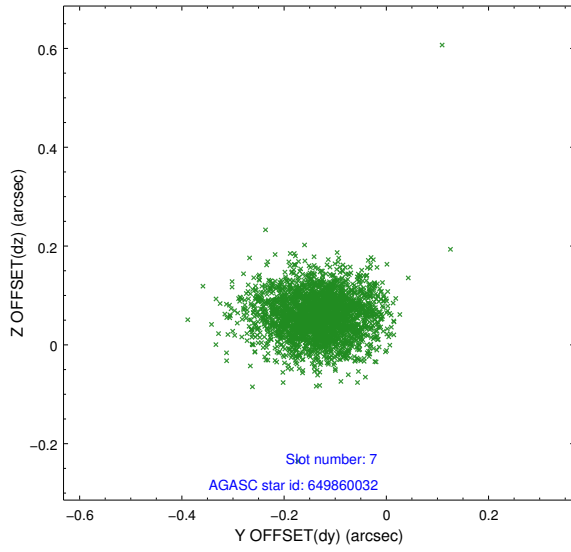
### 2.4.3 Slot 5



## 2.4.4 Slot 6

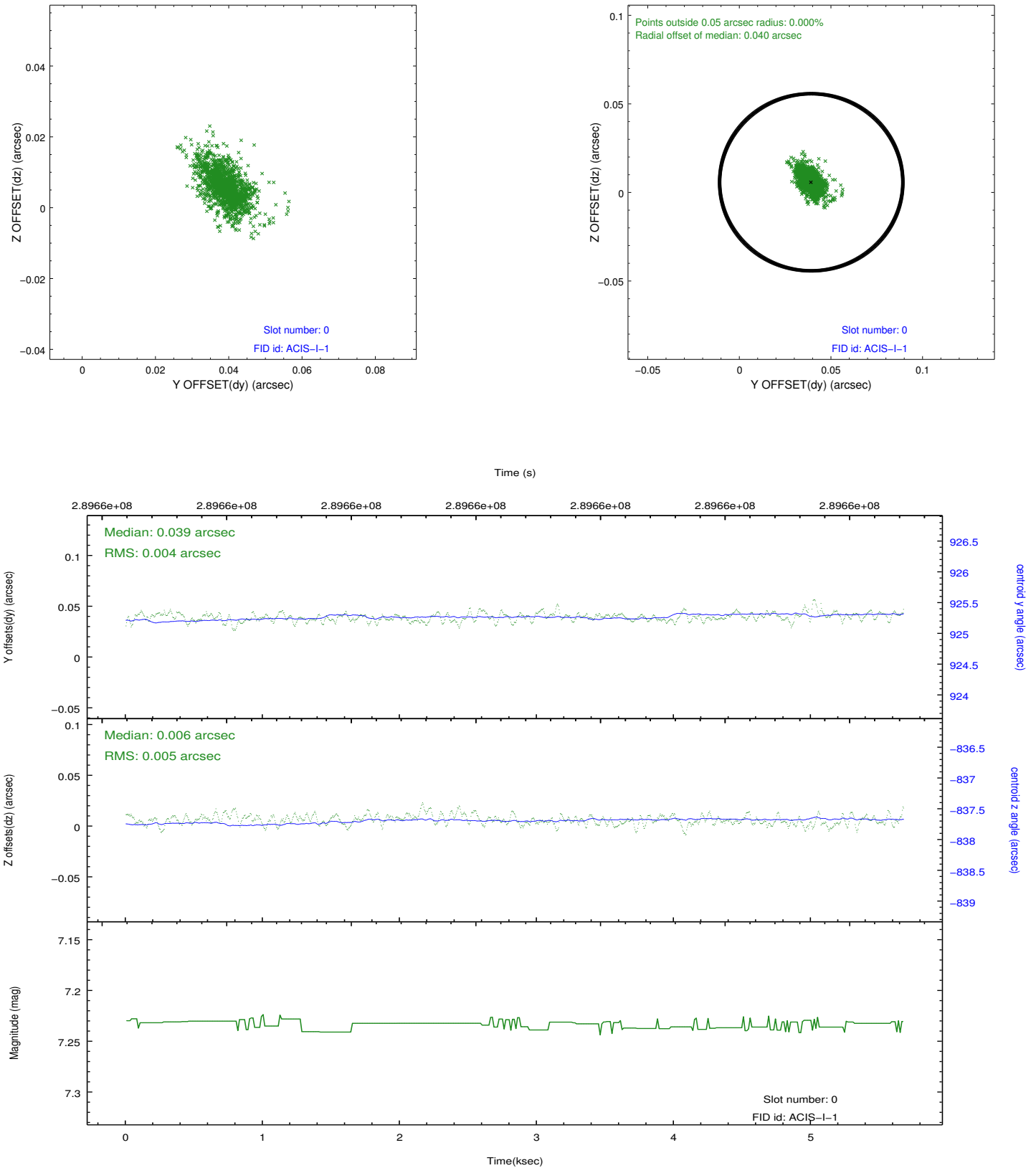


## 2.4.5 Slot 7

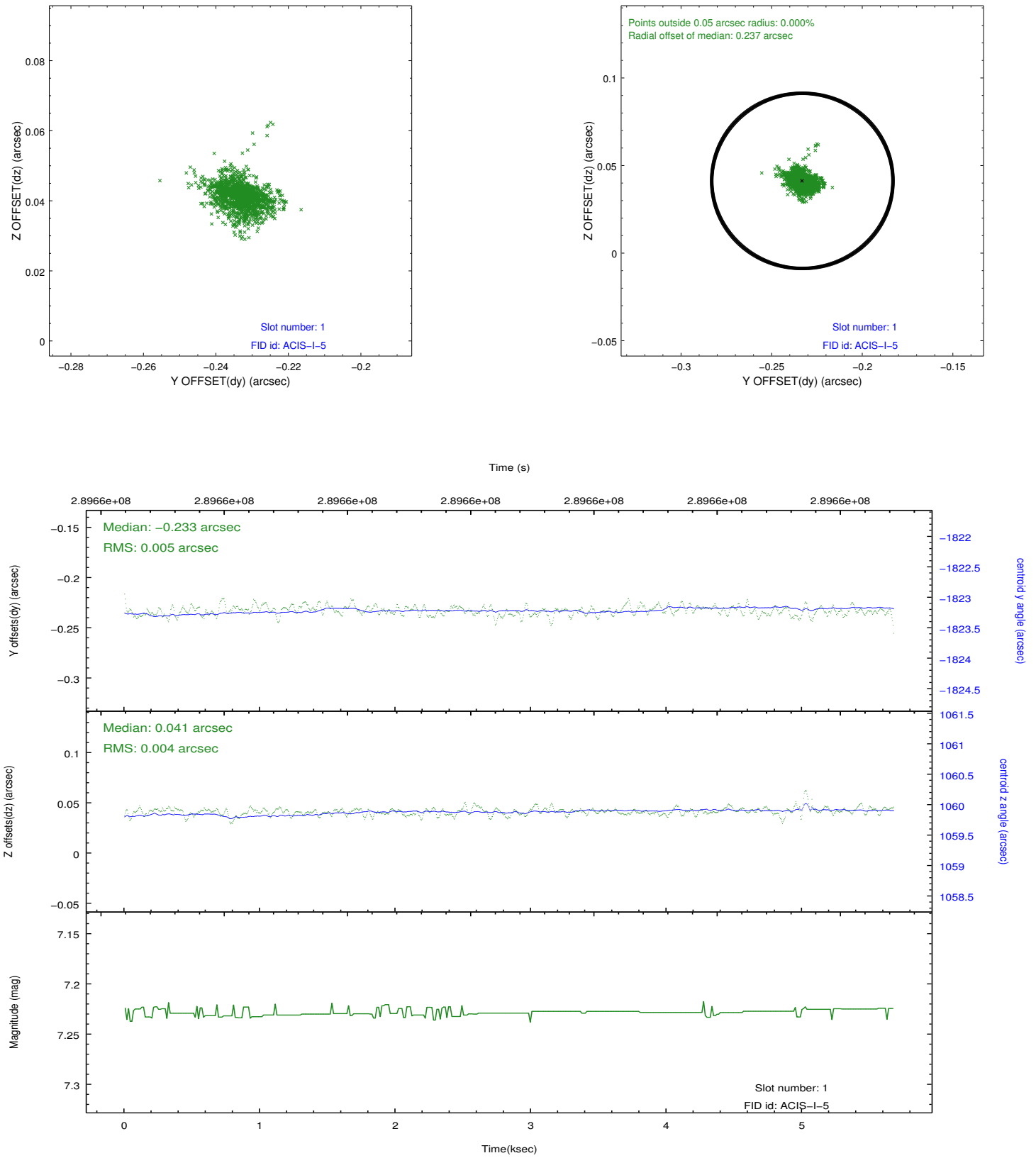


## 2.5 FID Slots

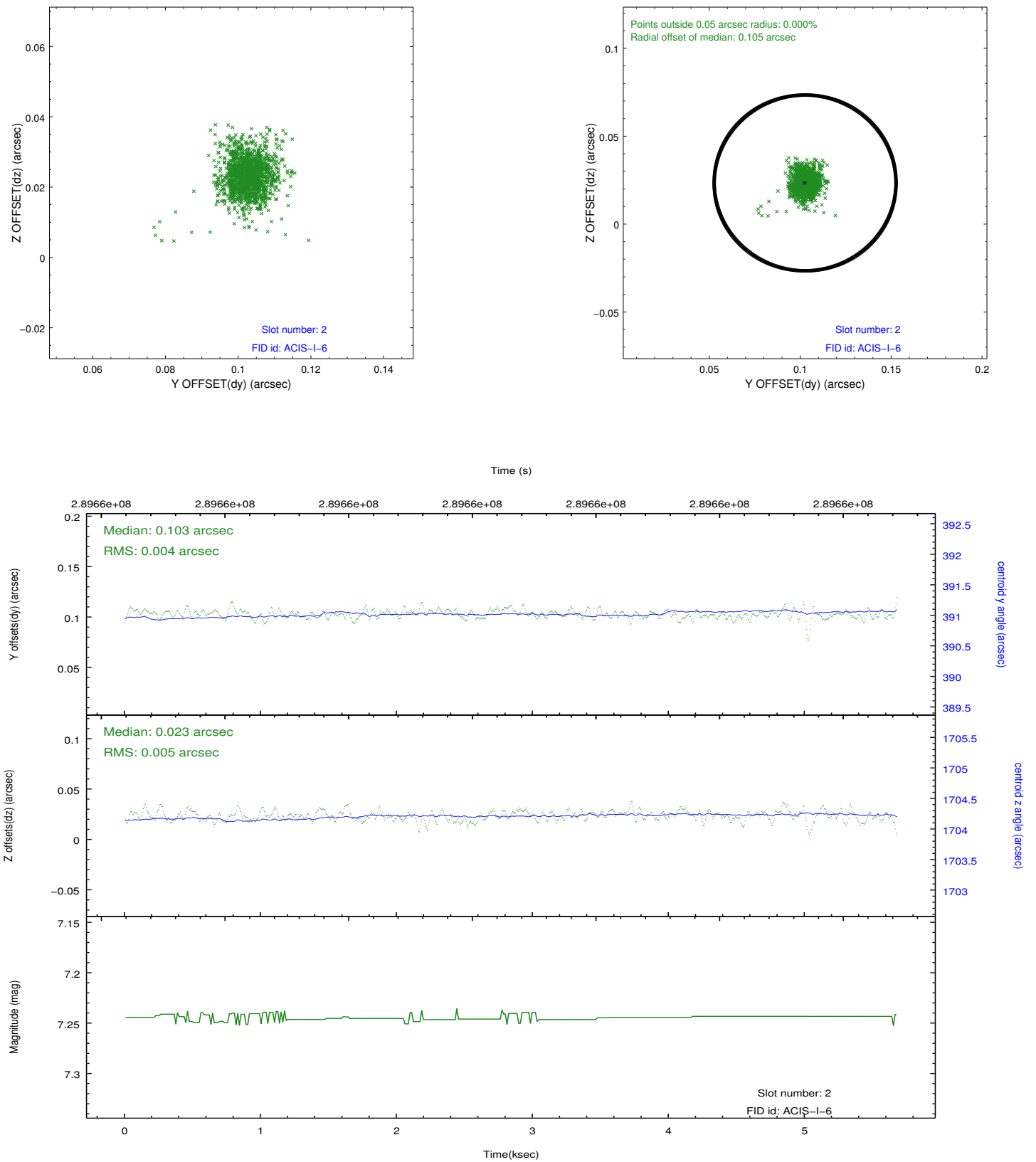
### 2.5.1 Slot 0



## 2.5.2 Slot 1



### 2.5.3 Slot 2



## A Summary

### A.1 Status

V&V Scientist	Beth Sundheim
V&V Date (YYYY-MM-DD)	2012.04.22
V&V Edition	1
V&V Disposition and Status	OK
V&V Charge Time	5.05920003

### A.2 Comments