

V&V Reference Report

L2 ASCDS Version : 8.4.3

Observation 7221 - L2 Version 2
Chandra X-Ray Center

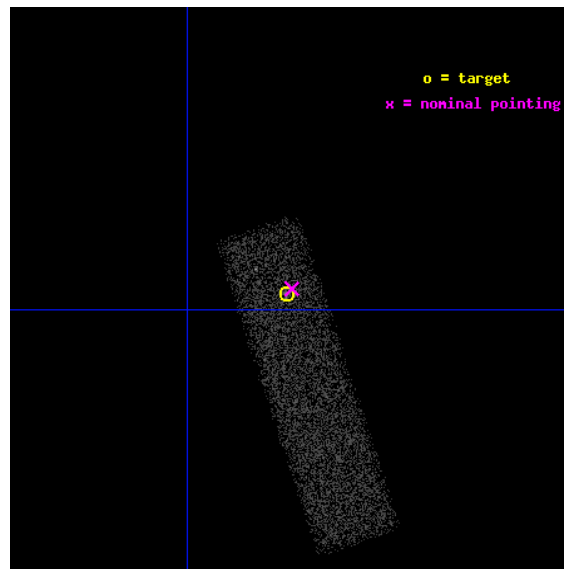
L2 Processing Date : Mar 16 2012

Contents

1	Front	2
2	OBI	3
2.1	OBI	3
2.1.1	Images	3
2.1.2	Bias	3
2.1.3	Parameters	4
2.1.4	Events	4
2.2	Compared Parameters	5
2.3	Aspect	6
2.4	Star Slots	9
2.4.1	Slot 3	9
2.4.2	Slot 4	10
2.4.3	Slot 5	11
2.4.4	Slot 6	12
2.4.5	Slot 7	13
2.5	FID Slots	14
2.5.1	Slot 0	14
2.5.2	Slot 1	15
2.5.3	Slot 2	16
A	Summary	17
A.1	Status	17
A.2	Comments	17

1 Front

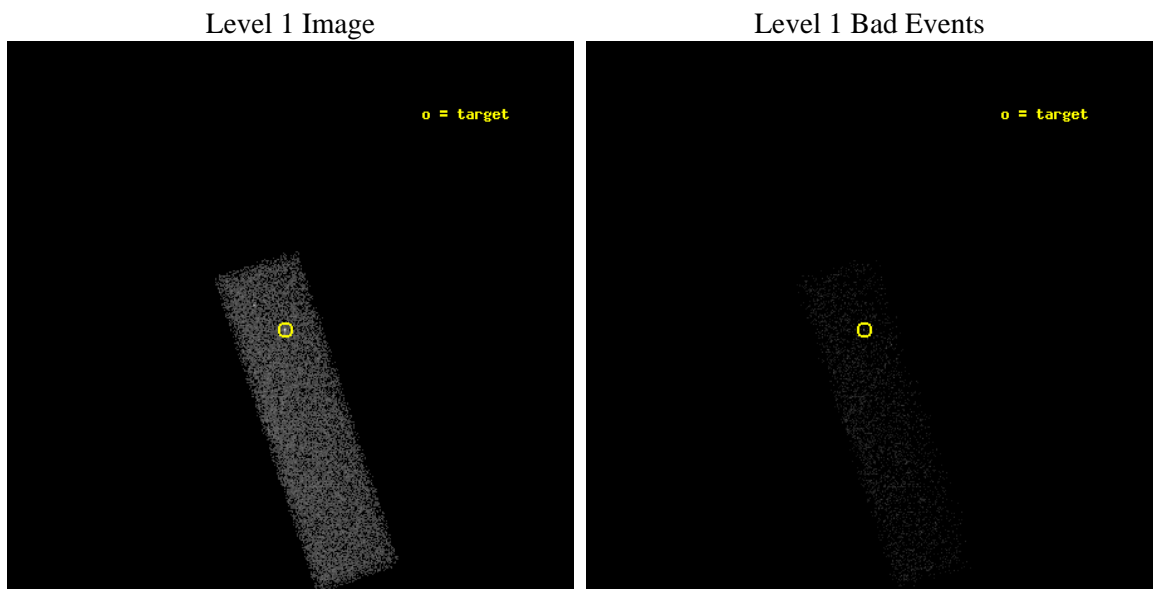
seq_num	701154	Sequence number
obs_id	7221	Observation id
title	A Study of the Physics of Extended Relativistic X-ray Jets, Discovered in our Chandra Survey	Proposal title
observer	Dr. Jonathan Gelbord	Principal investigator
object	PKS 0920-397	Source name
dtcycle	0	
cycle	P	events from which exps? Prim/Second/Both
ra_targ	140.693333	Observer's specified target RA [deg]
dec_targ	-39.993083	Observer's specified target Dec [deg]
ra_nom	140.69041772871	Nominal RA [deg]
dec_nom	-39.991063398375	Nominal Dec [deg]
roll_nom	71.654796250117	Nominal Roll [deg]
revision	2	Processing version of data
ontime	9516.0001417994	Sum of GTIs [s]
livetime	9051.6504725573	Livetime [s]
ontime7	9516.0001417994	Sum of GTIs [s]
l2events	12404	Number of level 2 events



2 OBI

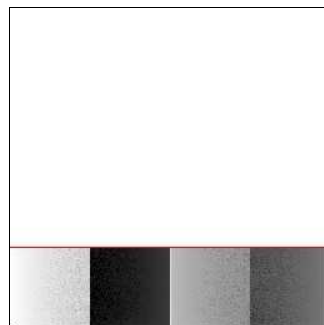
2.1 OBI

2.1.1 Images



2.1.2 Bias

Chip 7



2.1.3 Parameters

obi_num	0	Obi number	sched_exp_time	9350.000000	[s] Scheduled observation exposure time
ascdsver	8.4.3	Processing system revision	ontime	9516.0001417994	Sum of GTIs [s]
caldsver	4.4.8	 	ontime7	9516.0001417994	Sum of GTIs [s]
date	2012-03-17T01:23:36	Date and time of file creation	l1events	28150	Number of level 1 events
revision	2	Processing version of data			

2.1.4 Events

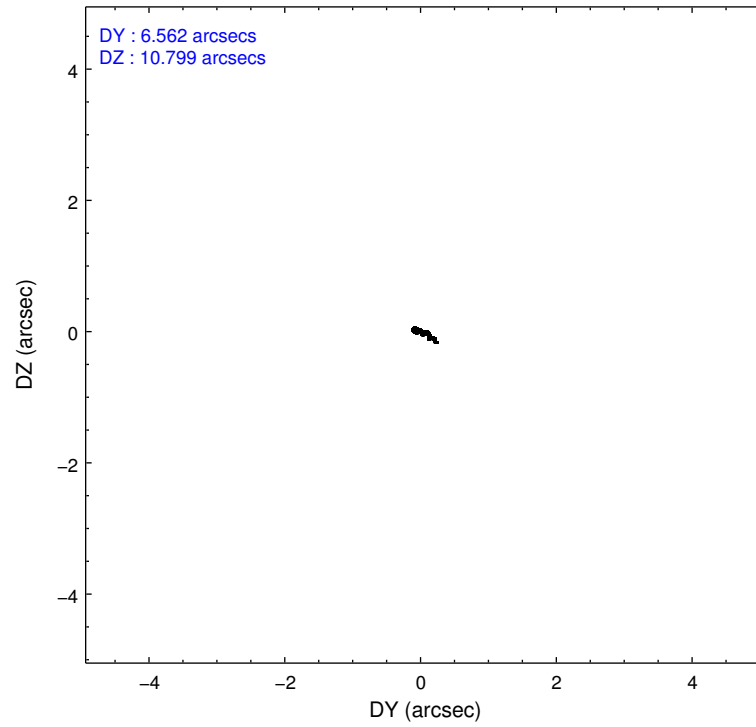
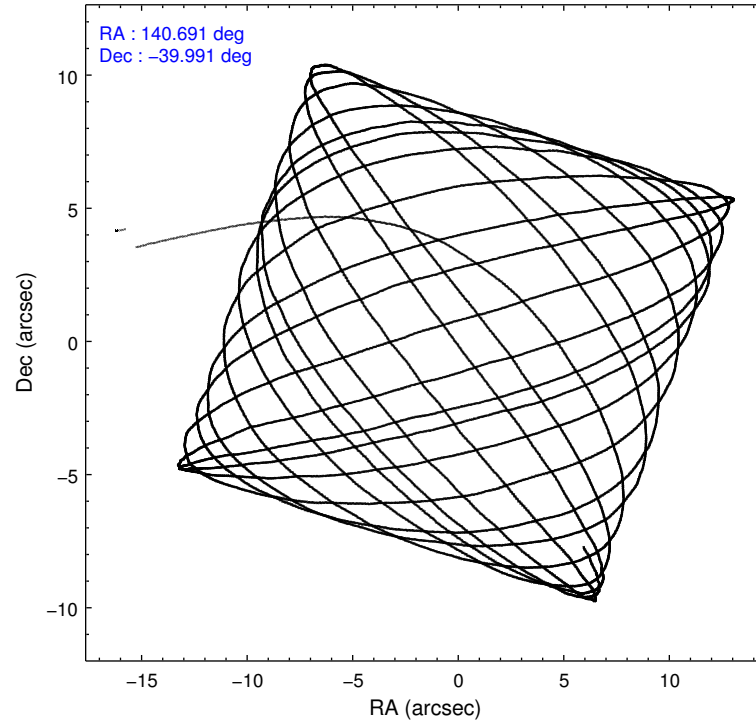
	ccd 7
level 1 events	28150
rejected events	15469
rejected %	54%

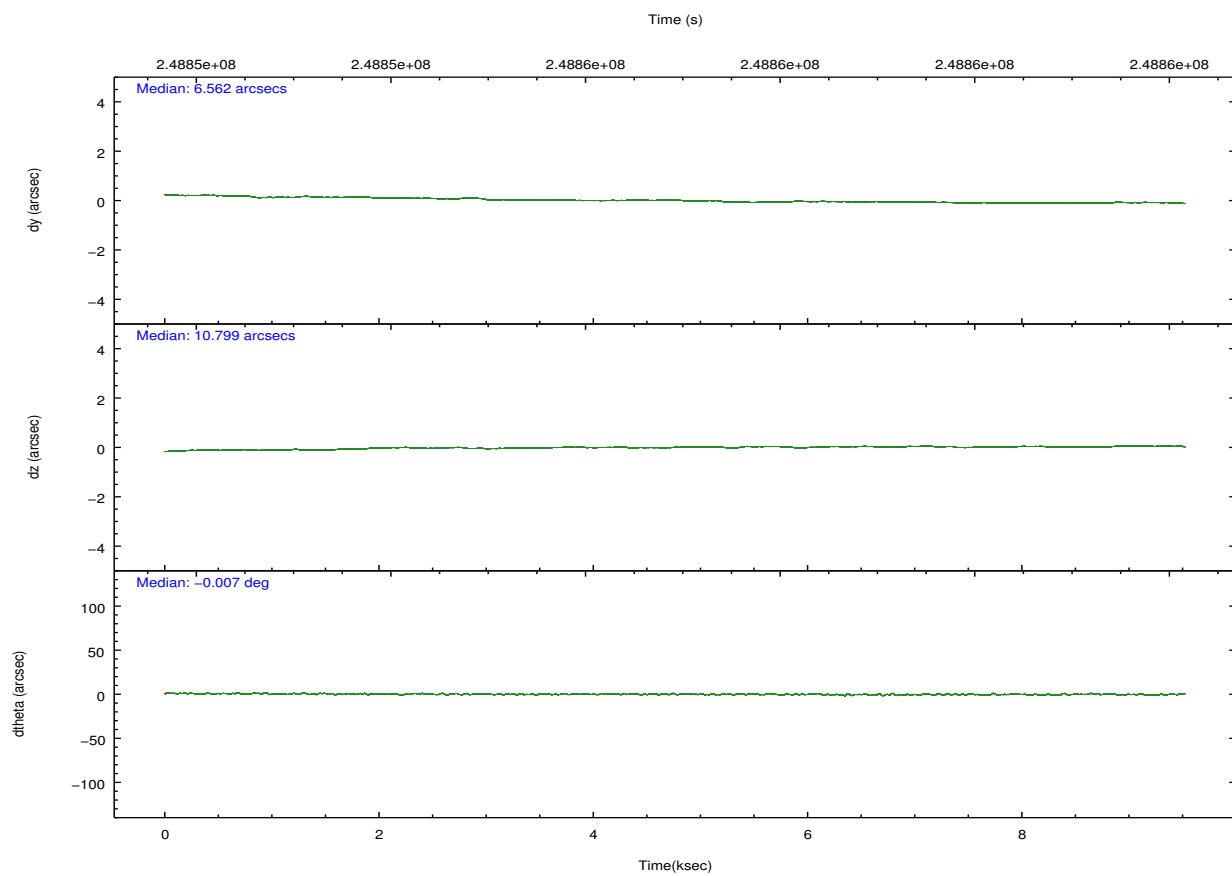
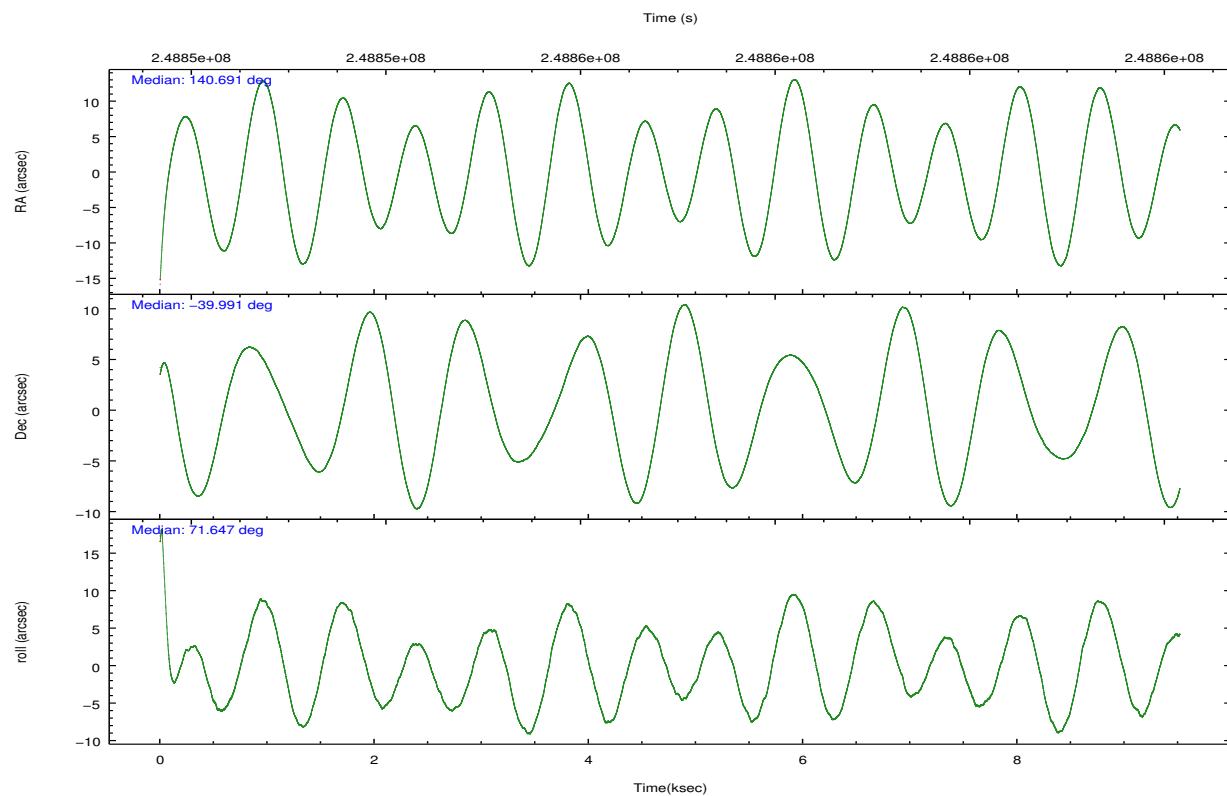
	ccd 7
grade 0 events	1381
	4%
grade 1 events	30
	0%
grade 2 events	2662
	9%
grade 3 events	1389
	4%
grade 4 events	1399
	4%
grade 5 events	2512
	8%
grade 6 events	6381
	22%
grade 7 events	12396
	44%

2.2 Compared Parameters

Parameter	Planned	Actual	Parameter	Planned	Actual
Instrument	ACIS	ACIS	Obspar format version number	7	7
Detector	ACIS-7	ACIS-7	Obspar file type	PREDICTED	ACTUAL
Grating	NONE	NONE	Obspar update status	NONE	UPDATED
Data mode	FAINT	FAINT	Number of optional ACIS chips dropped	0	0
Observation mode	POINTING	POINTING	On-chip summing requested	N	N
[deg] Pointing RA	140.698069	140.6904177287078	Subarray requested	CUSTOM	1/4
[deg] Pointing Dec	-40.017623	-39.9910633983749	Subarray start row	1	1
[deg] Pointing Roll	71.503051	71.65479625011685	Subarray row count	256	256
[mm] SIM focus pos	-0.684267	-0.6828225247311905	Alternating exposures requested	N	N
[mm] SIM defocus	0	0.001444936568705701	[s] Primary exposure time	0.000000	0.8
[mm] SIM translation stage pos	-179.932523	-179.921888664332			
[mm] SIM translation stage offset	-10.2	-10.21063391867577			
[s] Observation start time (MET)	248852332.184000	248851494.22402			
Observation start date	2005-11-20T05:37:48	2005-11-20T05:24:54			
[s] Observation end time (MET)	248861682.184000	248862515.53703			
Observation end date	2005-11-20T08:13:38	2005-11-20T08:28:35			
Read mode	TIMED	TIMED			

2.3 Aspect



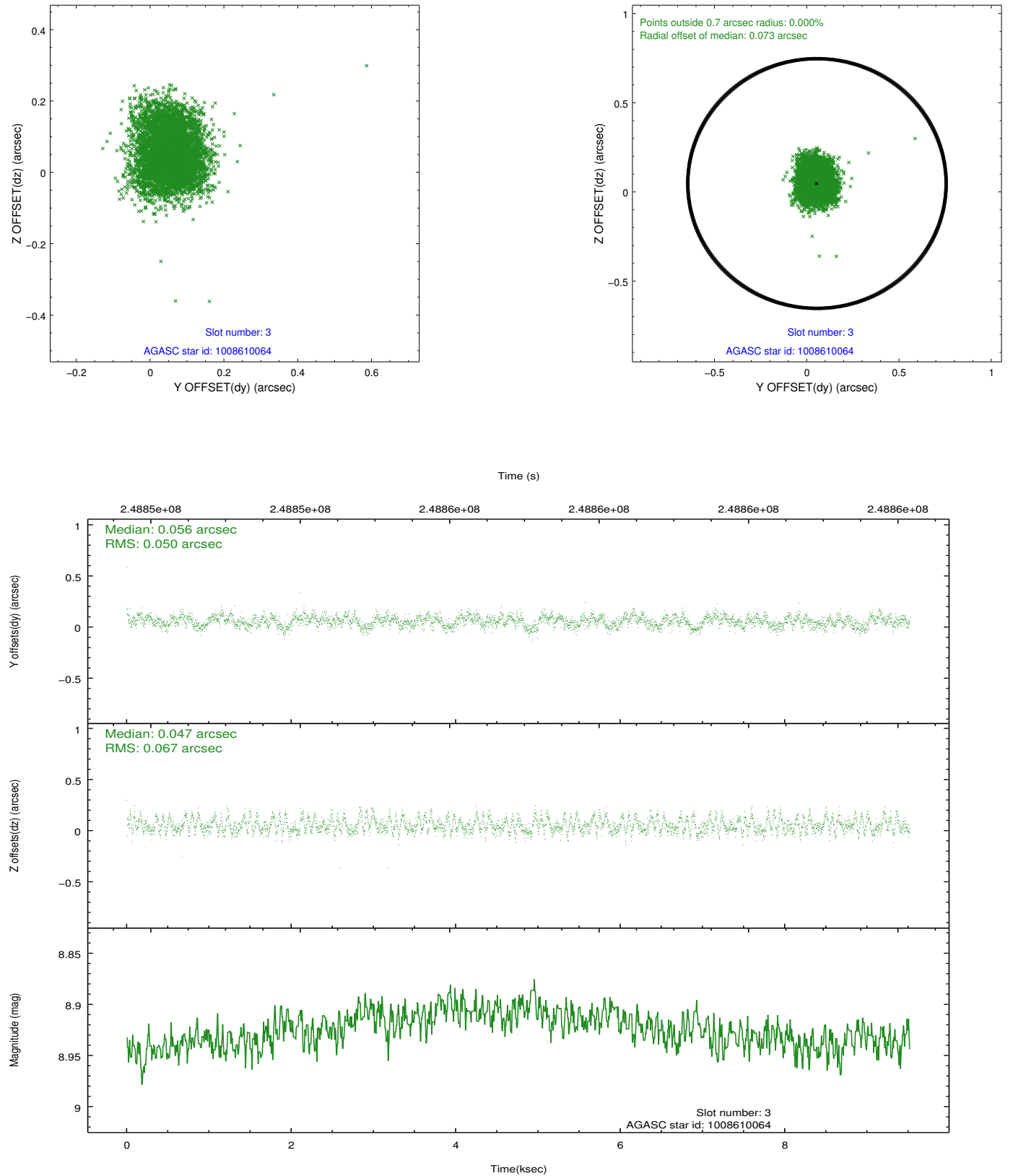


Slot Statistics

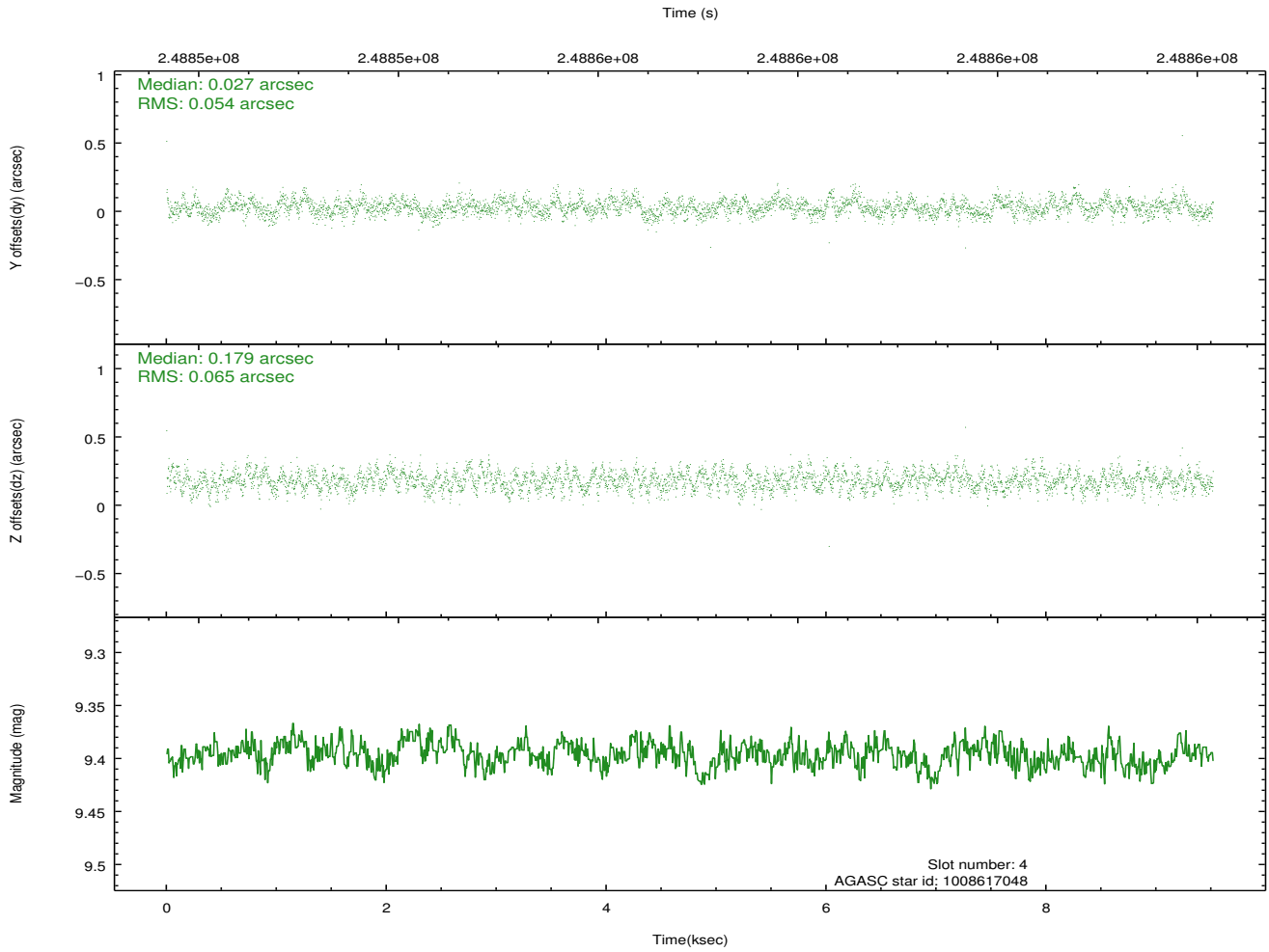
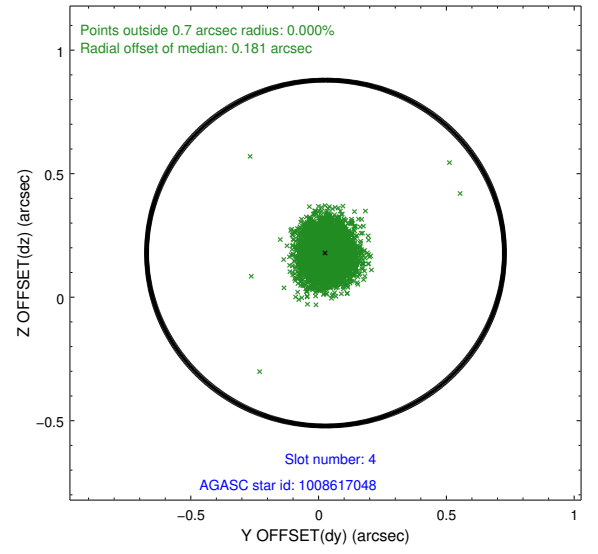
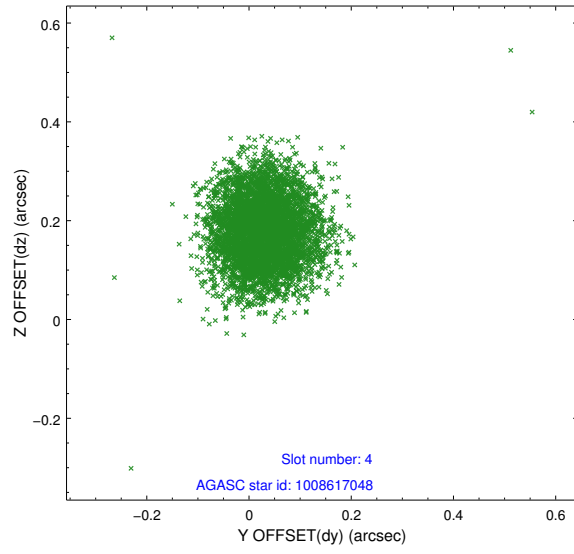
slot	status	id	mag	n_pts	med_dy	med_dz	dr1	dr2	ra	dec	mean_y	mean_z
0	FID	ACIS-S-1	7.18	2322	0.031	0.228	0.007	0.013	0.000000	0.000000	937.55	-1937.68
1	FID	ACIS-S-2	7.07	2322	-0.191	-0.220	0.007	0.011	0.000000	0.000000	-758.26	-1943.39
2	FID	ACIS-S-6	7.42	2322	0.140	-0.005	0.006	0.011	0.000000	0.000000	403.01	602.72
3	GUIDE	1008610064	8.93	4639	0.056	0.047	0.089	0.142	141.362695	-40.226184	-138.28	-1972.19
4	GUIDE	1008617048	9.40	4640	0.027	0.179	0.090	0.142	141.260770	-40.731902	-1955.63	-2273.33
5	GUIDE	1008631096	7.54	4644	-0.162	-0.218	0.055	0.089	140.384695	-39.696088	820.52	1189.84
6	GUIDE	1006915600	8.62	4641	0.051	-0.263	0.076	0.121	139.877240	-40.473529	-2279.11	1607.91
7	GUIDE	1008625256	9.62	4639	0.032	0.258	0.126	0.203	141.344731	-40.676760	-1696.16	-2428.54

2.4 Star Slots

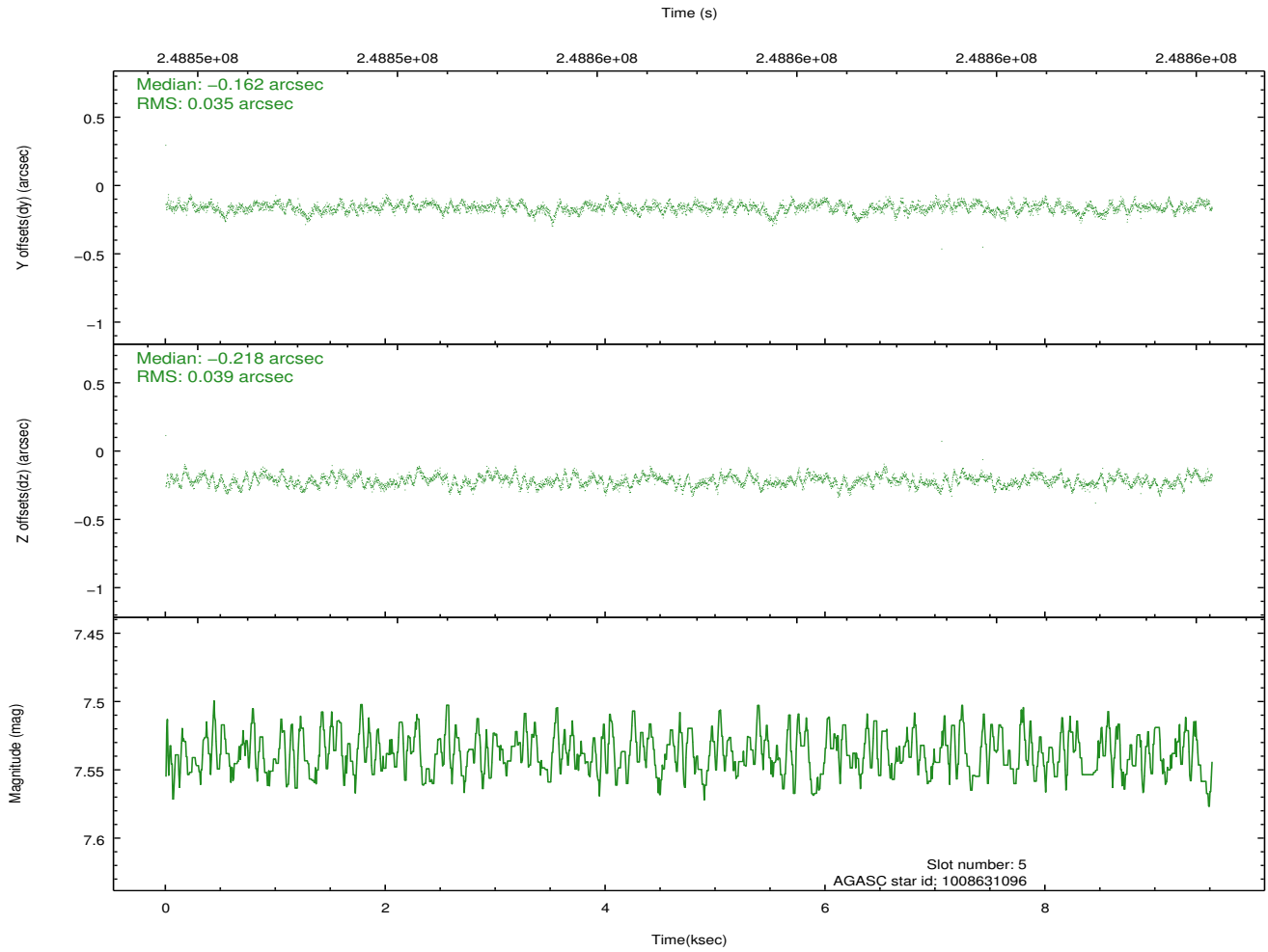
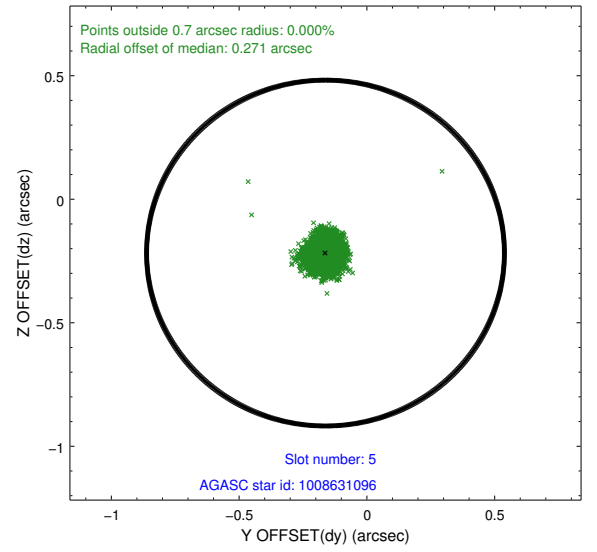
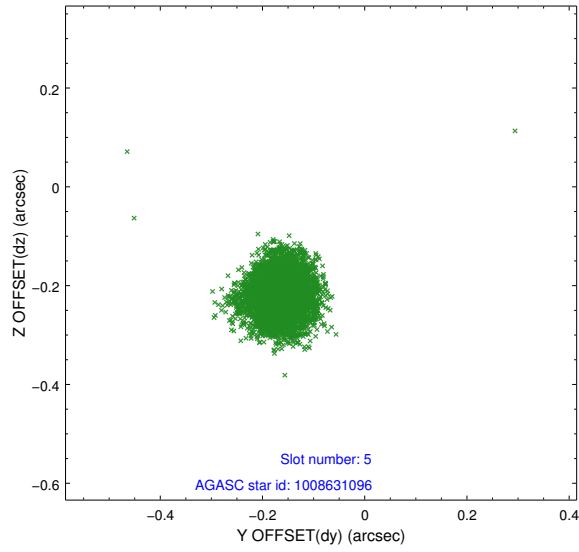
2.4.1 Slot 3



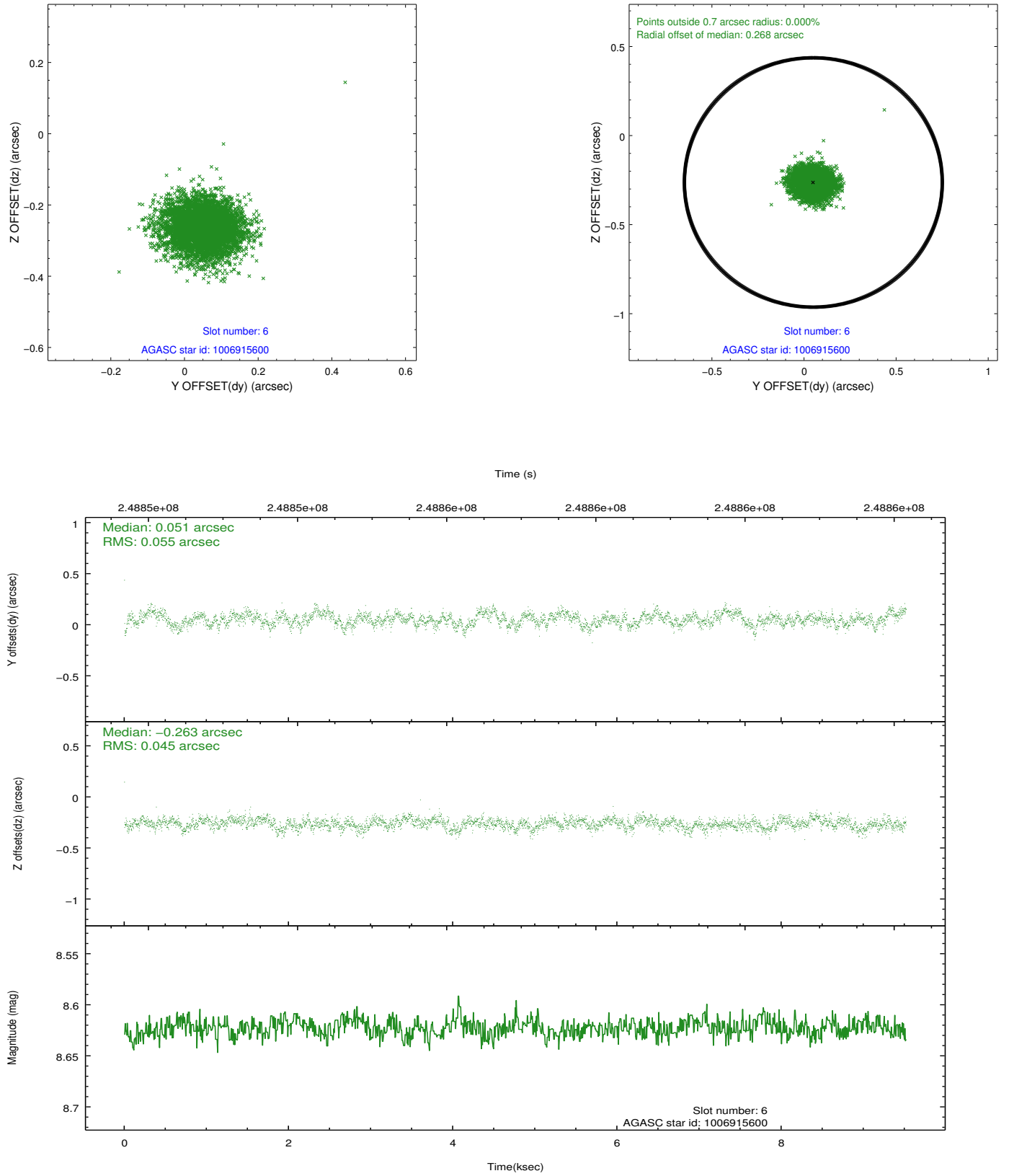
2.4.2 Slot 4



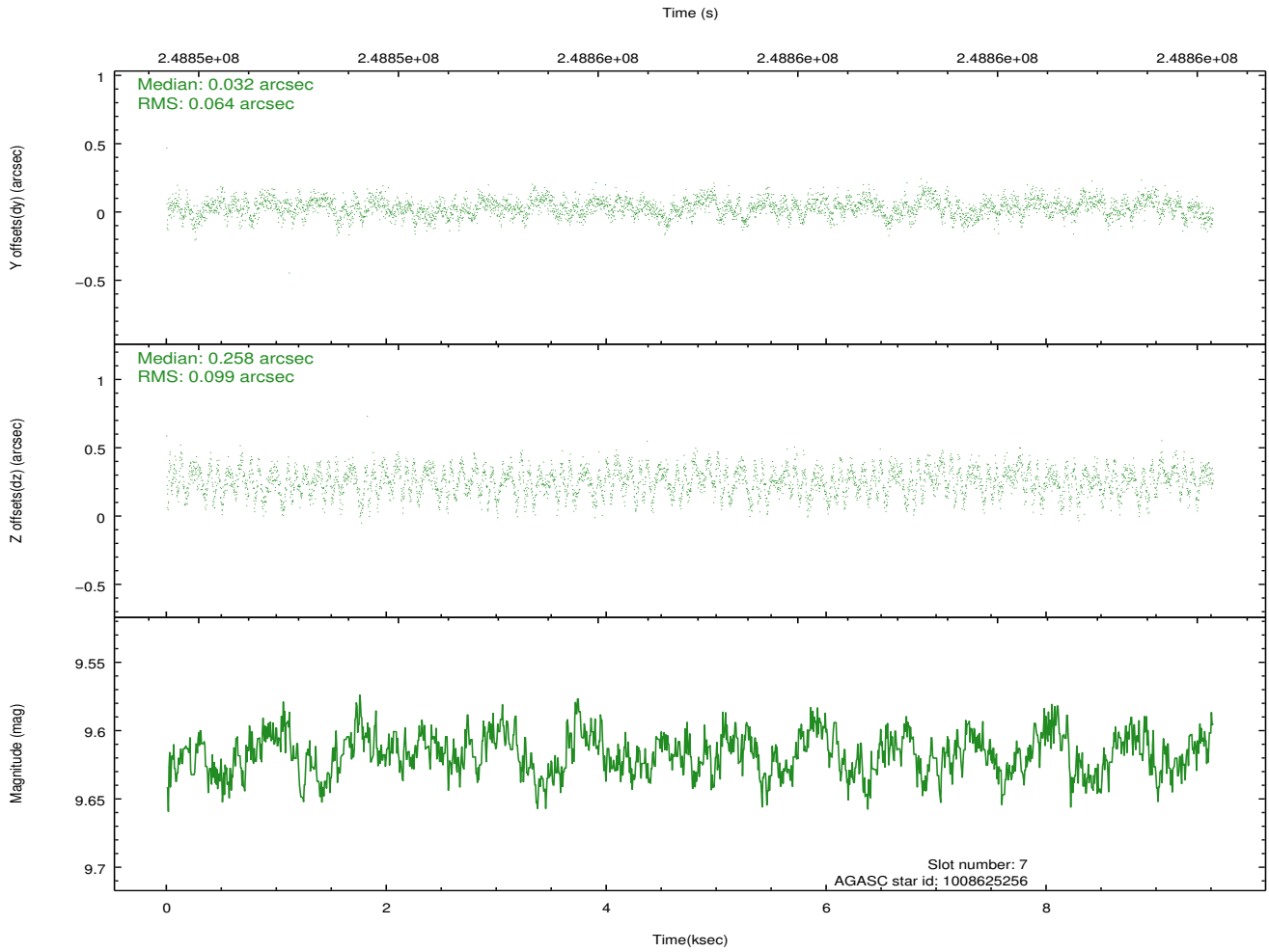
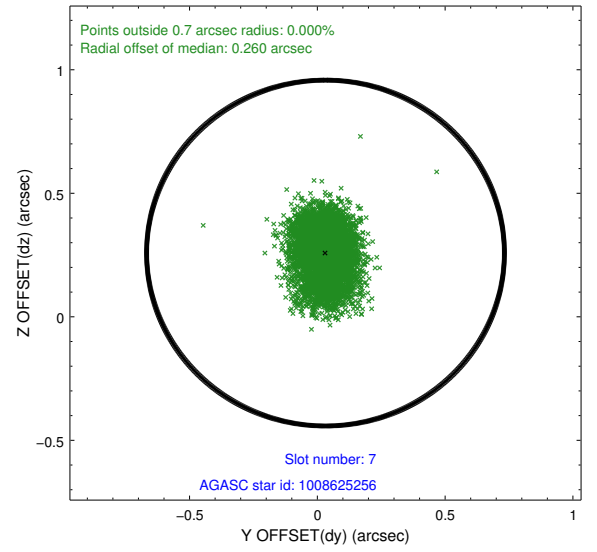
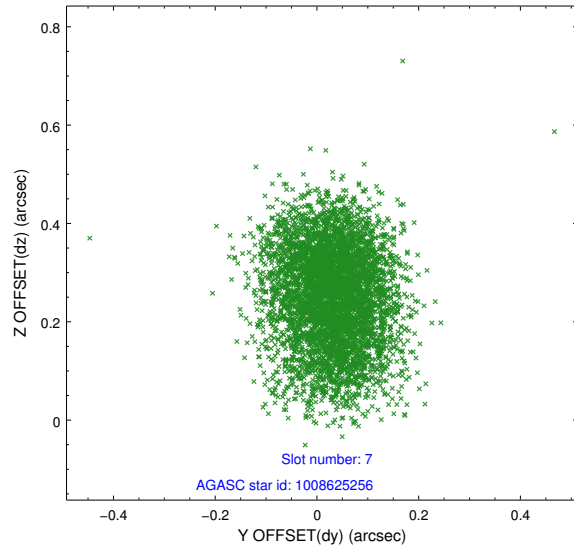
2.4.3 Slot 5



2.4.4 Slot 6

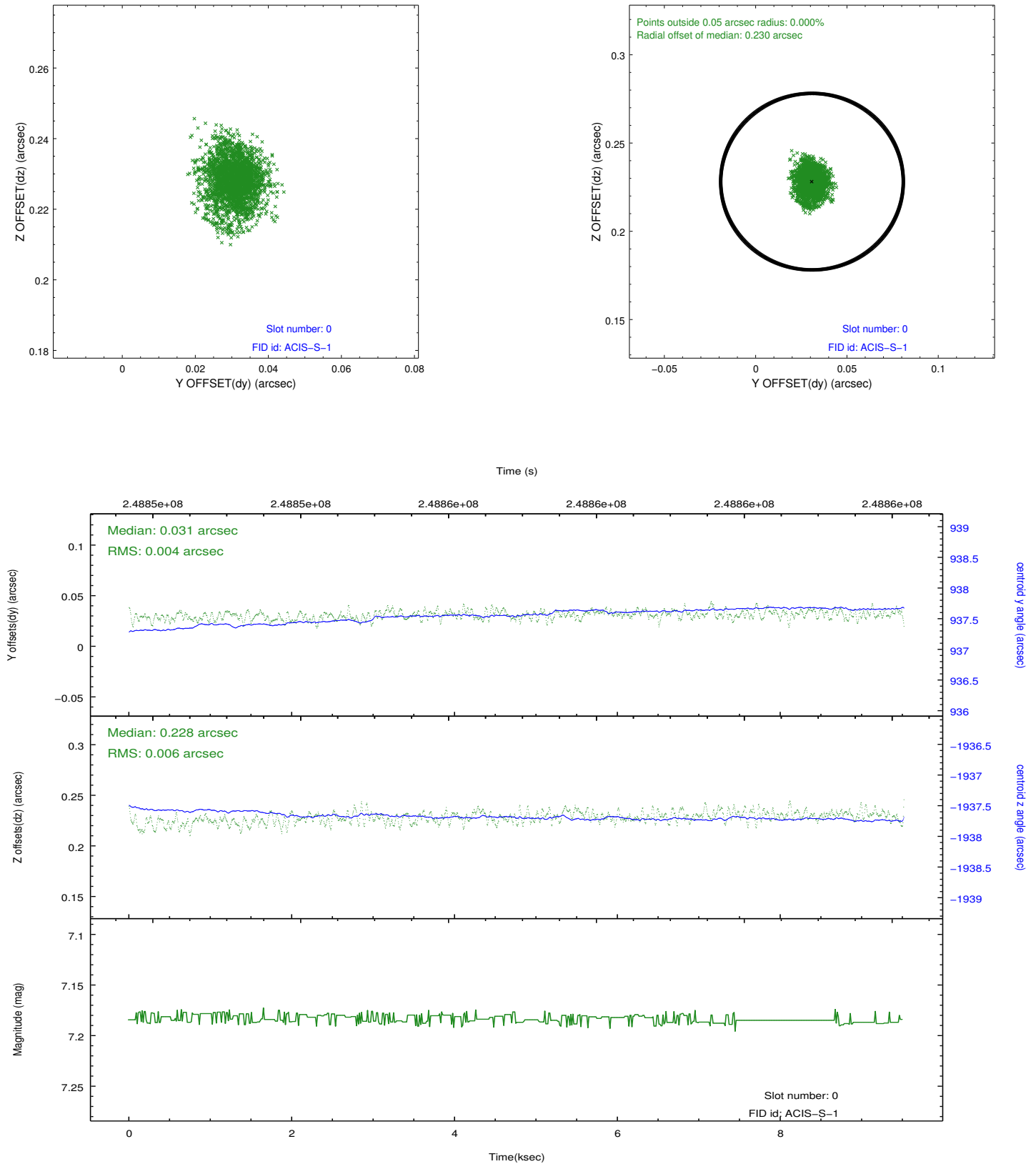


2.4.5 Slot 7

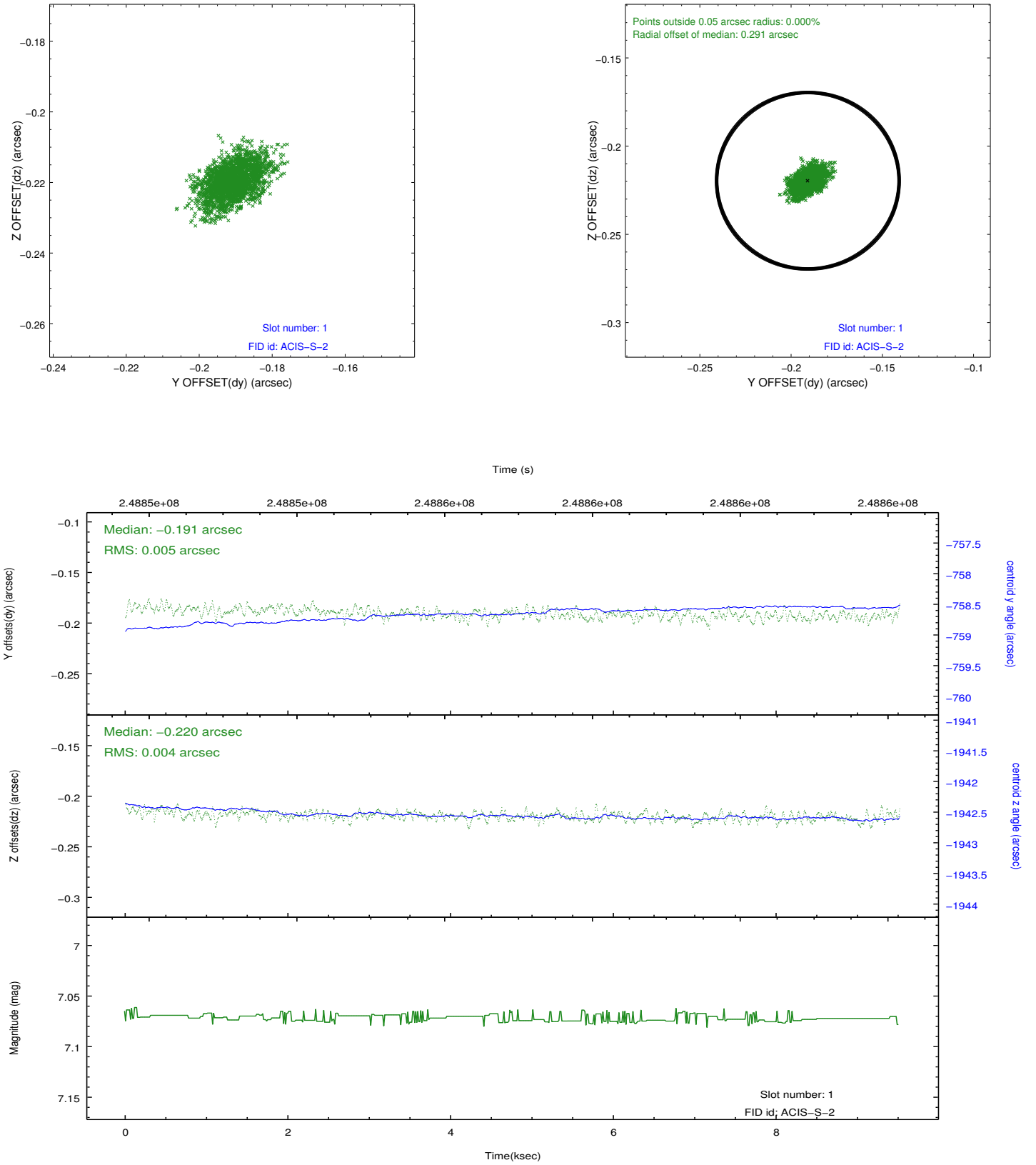


2.5 FID Slots

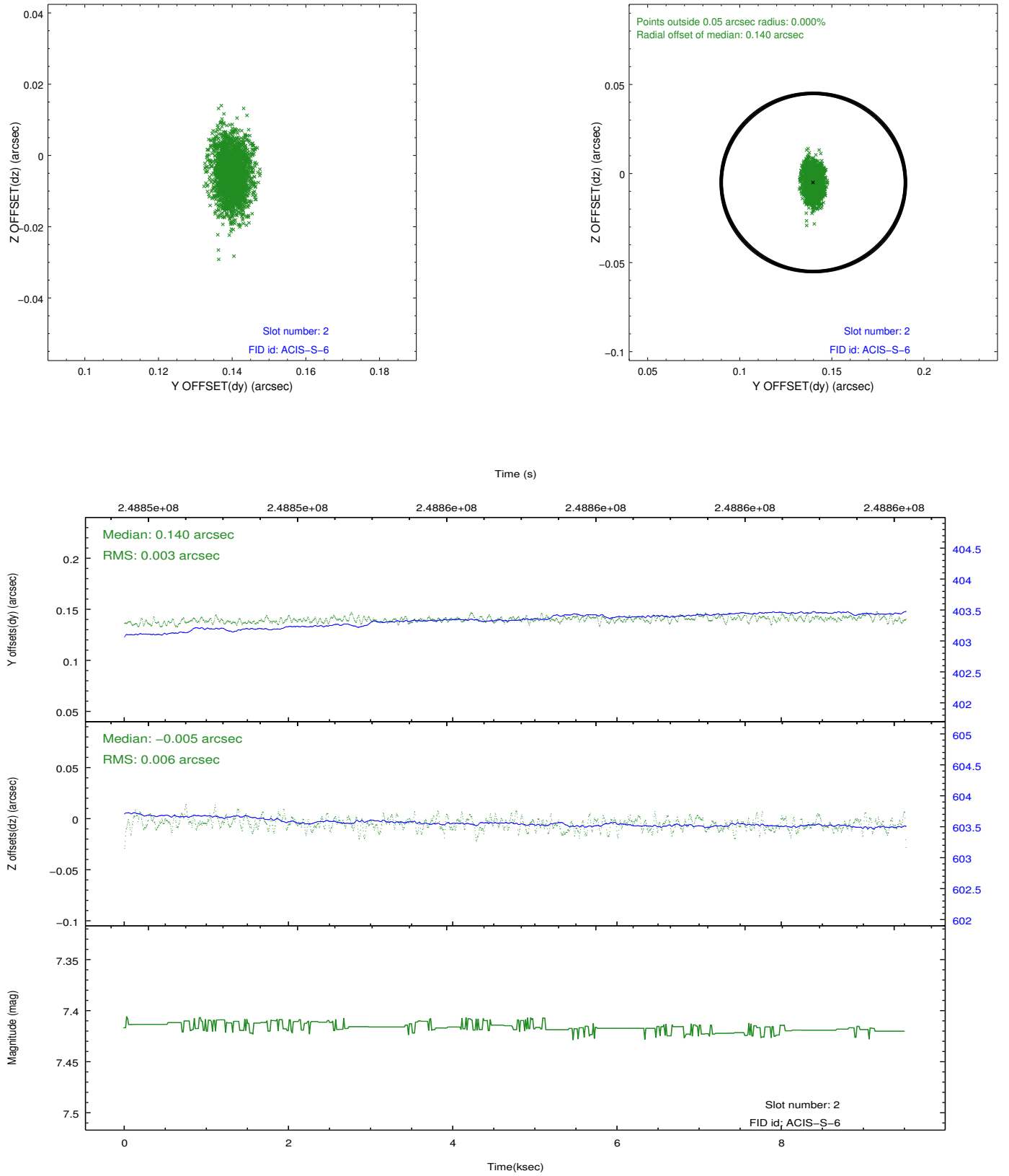
2.5.1 Slot 0



2.5.2 Slot 1



2.5.3 Slot 2



A Summary

A.1 Status

V&V Scientist	Beth Sundheim
V&V Date (YYYY-MM-DD)	2012.03.18
V&V Edition	1
V&V Disposition and Status	OK
V&V Charge Time	9.516

A.2 Comments