

# V&V Reference Report

## L2 ASCDS Version : 8.4.3.1

Observation 6961 - L2 Version 2  
Chandra X-Ray Center

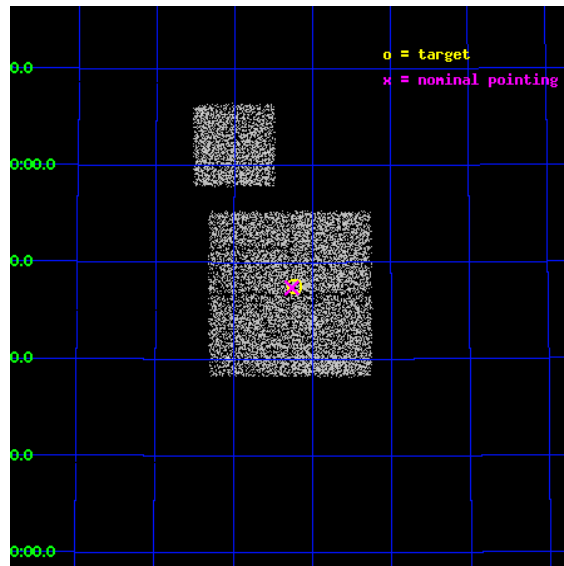
L2 Processing Date : Apr 9 2012

## Contents

<b>1</b>	<b>Front</b>	<b>2</b>
<b>2</b>	<b>OBI</b>	<b>3</b>
2.1	OBI . . . . .	3
2.1.1	Images . . . . .	3
2.1.2	Bias . . . . .	3
2.1.3	Parameters . . . . .	4
2.1.4	Events . . . . .	4
2.2	Compared Parameters . . . . .	5
2.3	Aspect . . . . .	6
2.4	Star Slots . . . . .	9
2.4.1	Slot 3 . . . . .	9
2.4.2	Slot 4 . . . . .	10
2.4.3	Slot 5 . . . . .	11
2.4.4	Slot 6 . . . . .	12
2.4.5	Slot 7 . . . . .	13
2.5	FID Slots . . . . .	14
2.5.1	Slot 0 . . . . .	14
2.5.2	Slot 1 . . . . .	15
2.5.3	Slot 2 . . . . .	16
<b>A</b>	<b>Summary</b>	<b>17</b>
A.1	Status . . . . .	17
A.2	Comments . . . . .	17

# 1 Front

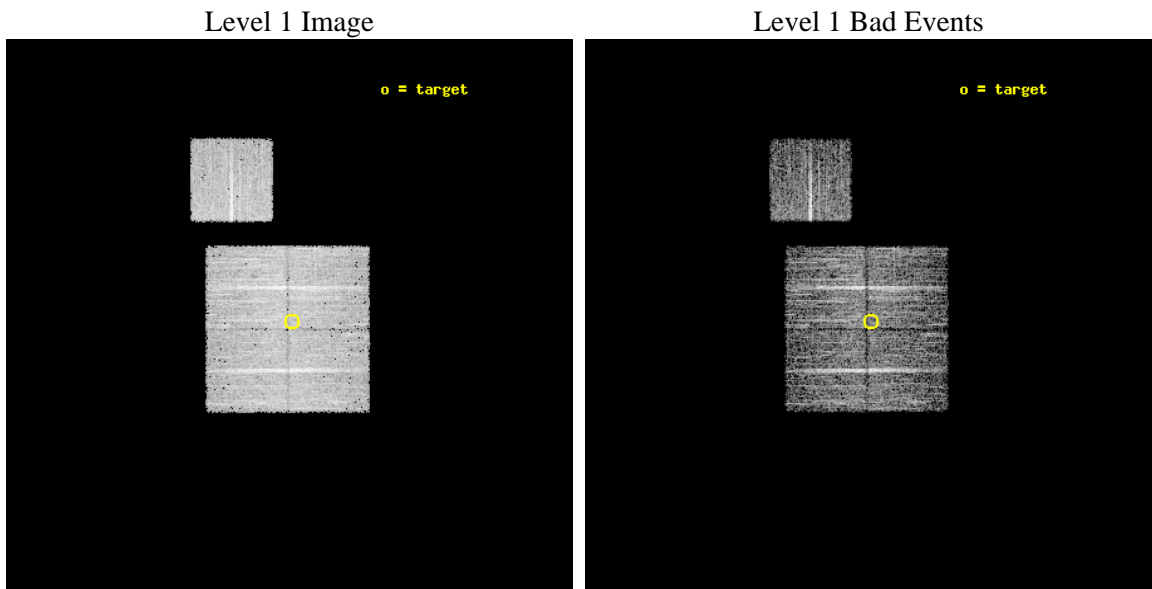
seq_num	800594	Sequence number
obs_id	6961	Observation id
title	A Search for the Origin of Ultrahigh Energy Cosmic Rays	Proposal t
observer	Prof. David Helfand	Principal investigator
object	P5	Source name
dtcycle	0	&#160
cycle	P	events from which exps? Prim/Second/Both
ra_targ	169.558	Observer's specified target RA [deg]
dec_targ	56.7917	Observer's specified target Dec [deg]
ra_nom	169.56575645513	Nominal RA [deg]
dec_nom	56.789810691963	Nominal Dec [deg]
roll_nom	359.87910537526	Nominal Roll [deg]
revision	2	Processing version of data
ontime	5030.183567524	Sum of GTIs [s]
livetime	4964.460516047	Livetime [s]
ontime0	5030.0604674816	Sum of GTIs [s]
ontime1	5030.1015174389	Sum of GTIs [s]
ontime2	5030.1425275207	Sum of GTIs [s]
ontime3	5030.183567524	Sum of GTIs [s]
ontime6	5033.160397768	Sum of GTIs [s]
l2events	15588	Number of level 2 events



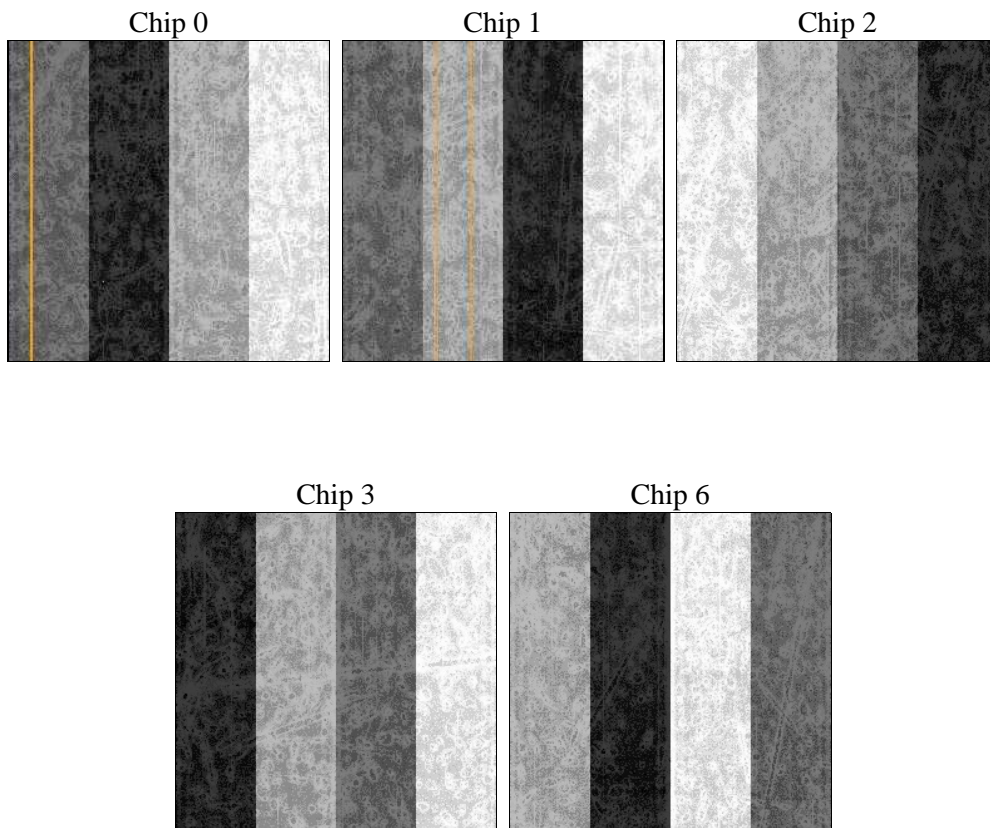
## 2 OBI

### 2.1 OBI

#### 2.1.1 Images



#### 2.1.2 Bias



### 2.1.3 Parameters

obi_num	0	Obi number	sched_exp_time	5000.000000	[s] Scheduled observation exposure time
ascdsver	8.4.3.1	Processing system revision	ontime	5030.183567524	Sum of GTIs [s]
caldsver	4.4.9	&#160	ontime0	5030.0604674816	Sum of GTIs [s]
date	2012-04-09T15:06:33	Date and time of file creation	ontime1	5030.1015174389	Sum of GTIs [s]
revision	2	Processing version of data	ontime2	5030.1425275207	Sum of GTIs [s]
			ontime3	5030.183567524	Sum of GTIs [s]
			ontime6	5033.160397768	Sum of GTIs [s]
			l1events	187115	Number of level 1 events

### 2.1.4 Events

	ccd 0	ccd 1	ccd 2	ccd 3	ccd 6
level 1 events	35917	35491	42519	37136	36052
rejected events	32241	31370	38827	33597	32279
rejected %	89%	88%	91%	90%	89%

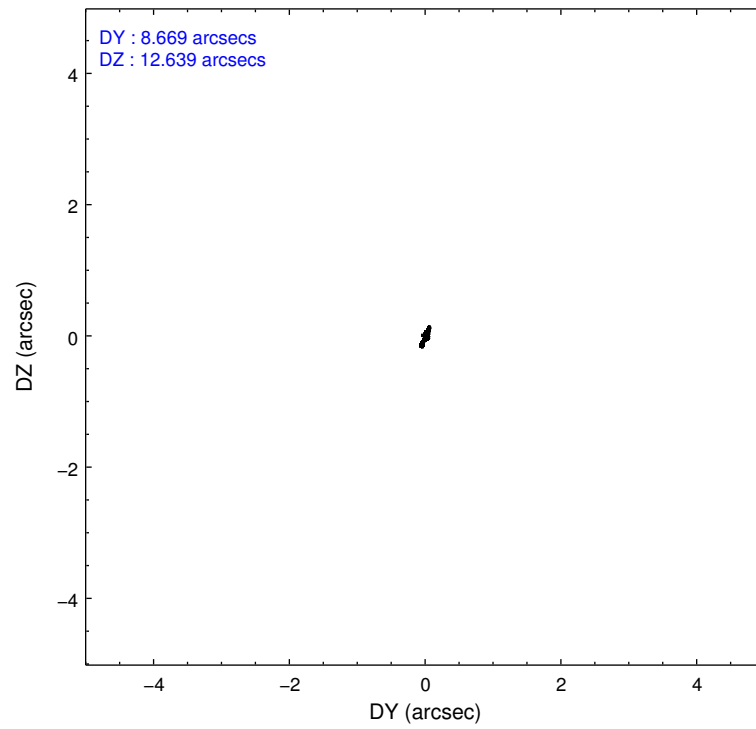
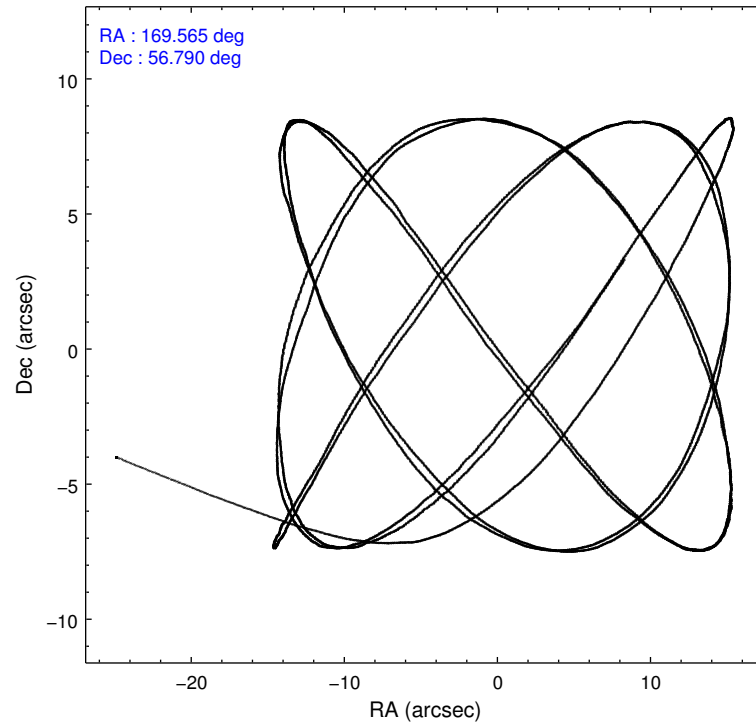
	ccd 0	ccd 1	ccd 2	ccd 3	ccd 6
grade 0 events	1235	1568	1331	1221	1282
	3%	4%	3%	3%	3%
grade 1 events	15	19	17	18	12
	0%	0%	0%	0%	0%
grade 2 events	918	865	882	772	807
	2%	2%	2%	2%	2%
grade 3 events	395	475	384	428	435
	1%	1%	0%	1%	1%
grade 4 events	388	437	401	402	425
	1%	1%	0%	1%	1%
grade 5 events	1315	1403	1155	1553	1524
	3%	3%	2%	4%	4%
grade 6 events	745	783	702	720	831
	2%	2%	1%	1%	2%
grade 7 events	30906	29941	37647	32022	30736
	86%	84%	88%	86%	85%

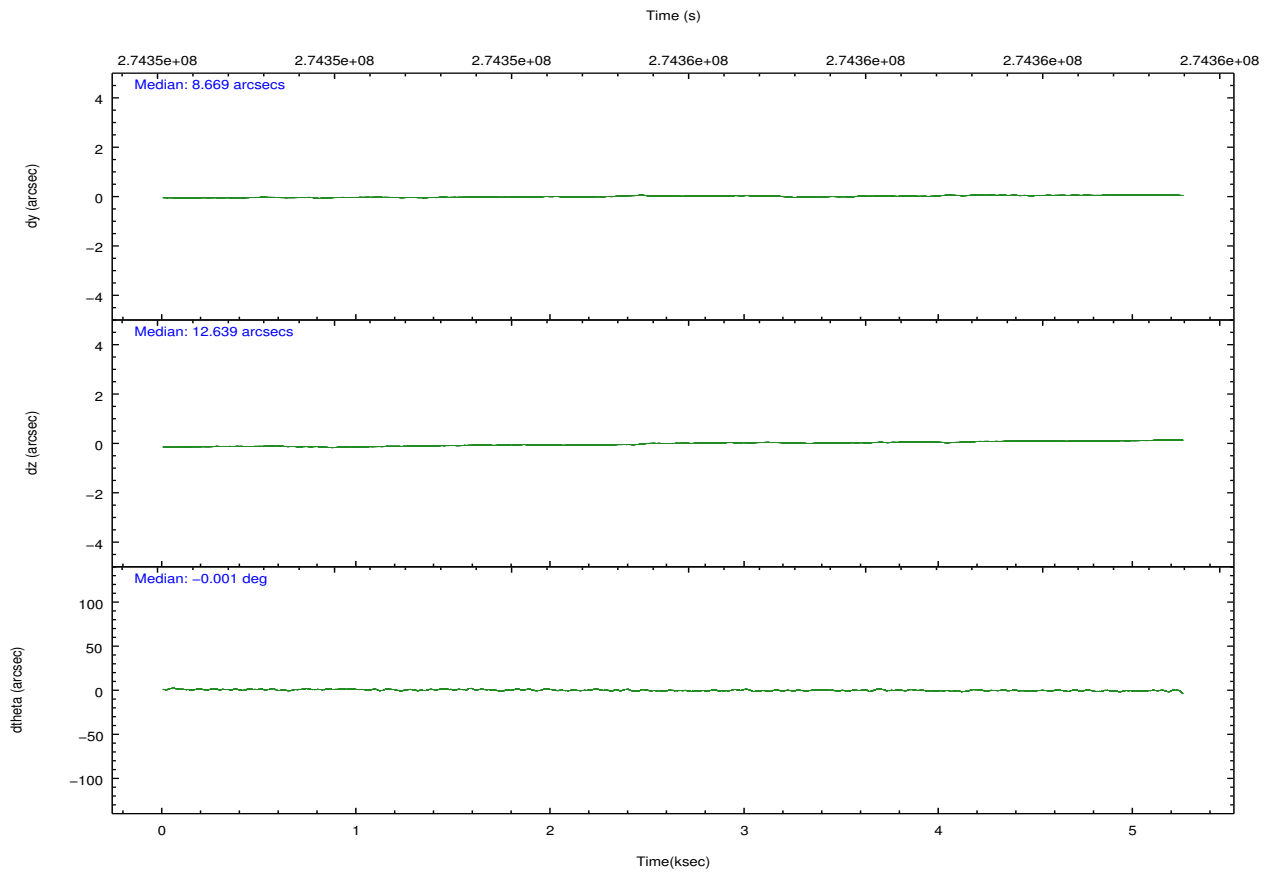
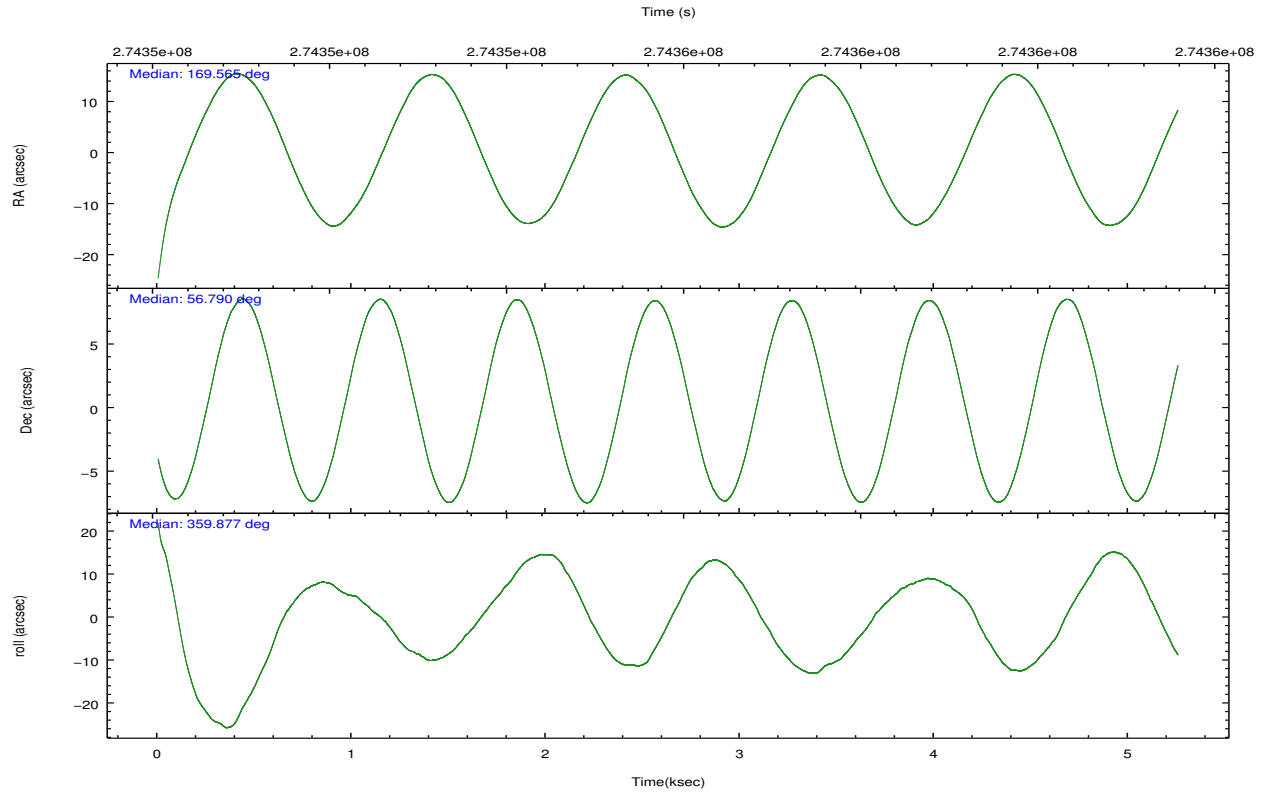


## 2.2 Compared Parameters

Parameter	Planned	Actual	Parameter	Planned	Actual
Instrument	ACIS	ACIS	Obspar format version number	7	7
Detector	ACIS-01236	ACIS-01236	Obspar file type	PREDICTED	ACTUAL
Grating	NONE	NONE	Obspar update status	NONE	UPDATED
Data mode	VFAINT	VFAINT	Number of optional ACIS chips dropped	0	0
Observation mode	POINTING	POINTING	On-chip summing requested	N	N
[deg] Pointing RA	169.522561	169.565756455134	Subarray requested	NONE	NONE
[deg] Pointing Dec	56.776135	56.78981069196276	Alternating exposures requested	N	N
[deg] Pointing Roll	359.706555	359.8791053752616	[s] Primary exposure time	0.000000	3.1
[mm] SIM focus pos	-0.782348	-0.7809083437167272			
[mm] SIM defocus	0	0.001439871863259334			
[mm] SIM translation stage pos	-233.592463	-233.5874344608287			
[mm] SIM translation stage offset	0	-0.005018542100998502			
[s] Observation start time (MET)	274352548.184000	274351585.32486			
Observation start date	2006-09-11T09:01:23	2006-09-11T08:46:25			
[s] Observation end time (MET)	274357548.184000	274358350.32518			
Observation end date	2006-09-11T10:24:43	2006-09-11T10:39:10			
Read mode	TIMED	TIMED			

## 2.3 Aspect



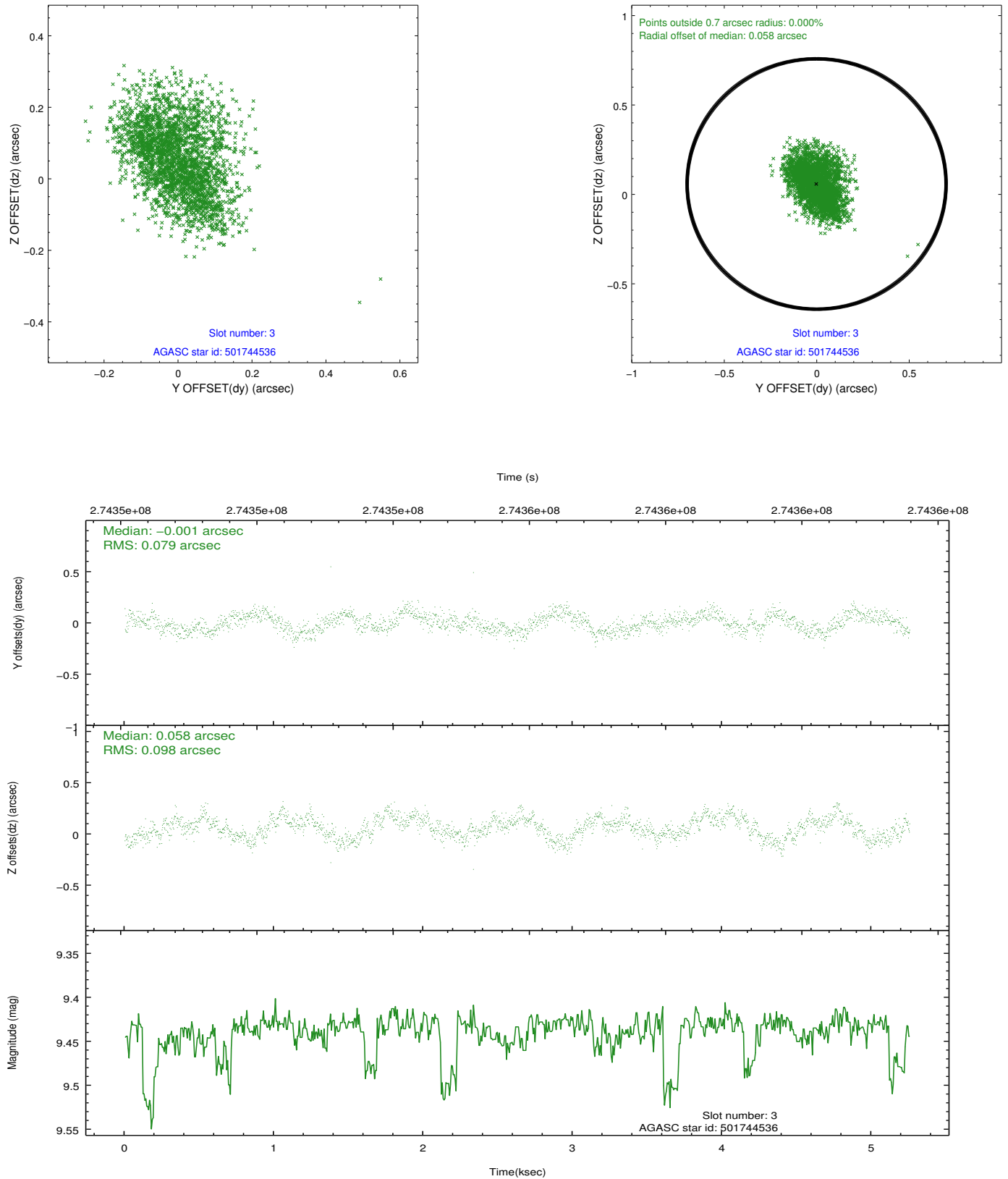


### Slot Statistics

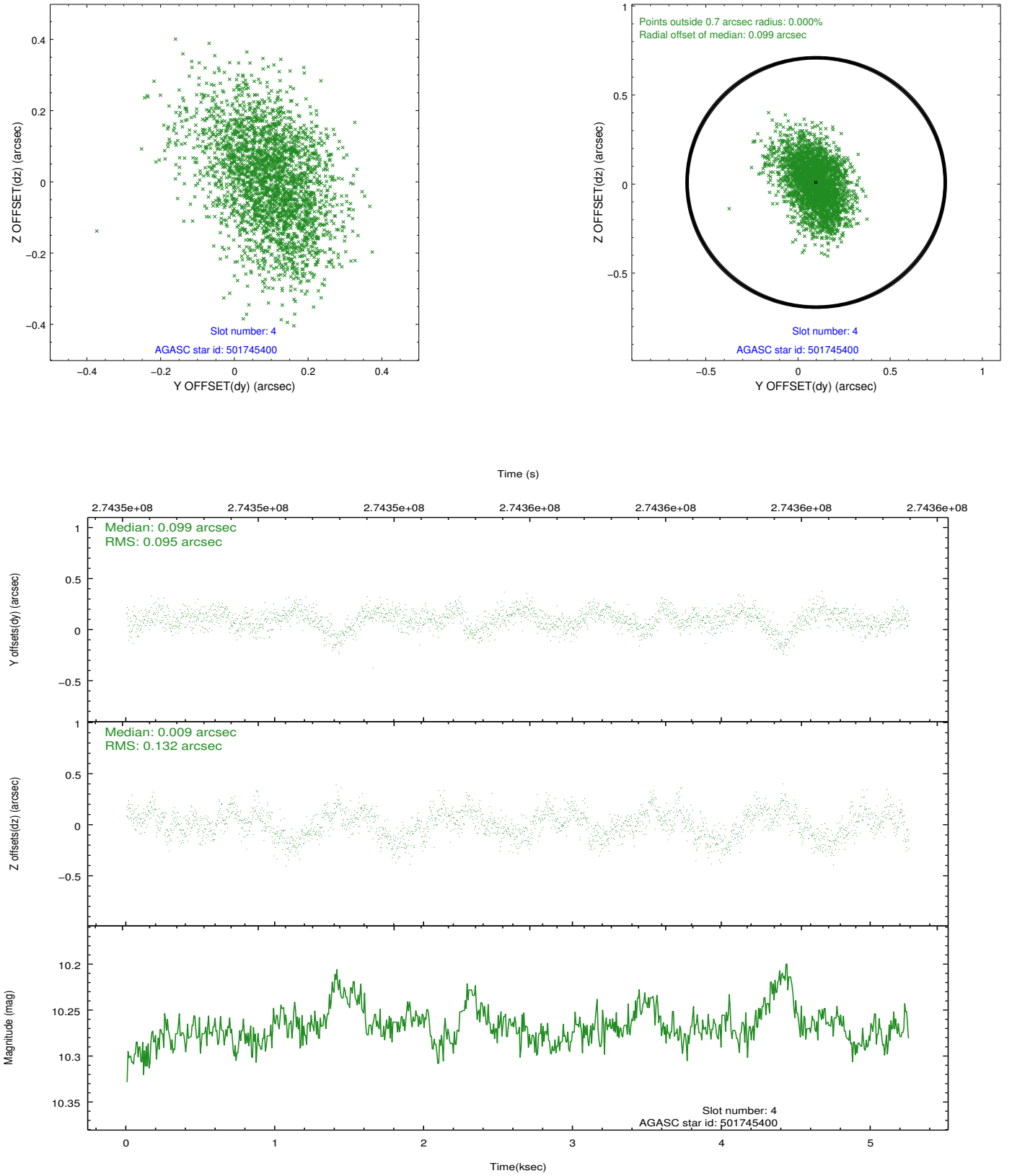
slot	status	id	mag	n_pts	med_dy	med_dz	dr1	dr2	ra	dec	mean_y	mean_z
0	FID	ACIS-I-4	7.19	1282	0.190	0.025	0.008	0.014	0.000000	0.000000	2151.13	1063.70
1	FID	ACIS-I-5	7.23	1282	-0.267	0.026	0.006	0.011	0.000000	0.000000	-1815.80	1062.30
2	FID	ACIS-I-6	7.24	1282	-0.023	0.016	0.009	0.016	0.000000	0.000000	395.27	1706.57
3	GUIDE	501744536	9.44	2561	-0.001	0.058	0.136	0.214	169.793252	56.284902	550.69	-1764.10
4	GUIDE	501745400	10.27	2560	0.099	0.009	0.171	0.290	169.096679	56.322620	-840.79	-1634.69
5	GUIDE	501745560	6.83	2564	-0.074	-0.170	0.069	0.118	170.455367	57.074858	1819.43	1096.93
6	GUIDE	501745960	8.45	2560	0.010	0.068	0.066	0.105	170.066430	56.606700	1082.08	-599.21
7	GUIDE	501747152	9.85	2562	-0.034	0.036	0.111	0.183	169.932243	56.210283	831.81	-2030.16

## 2.4 Star Slots

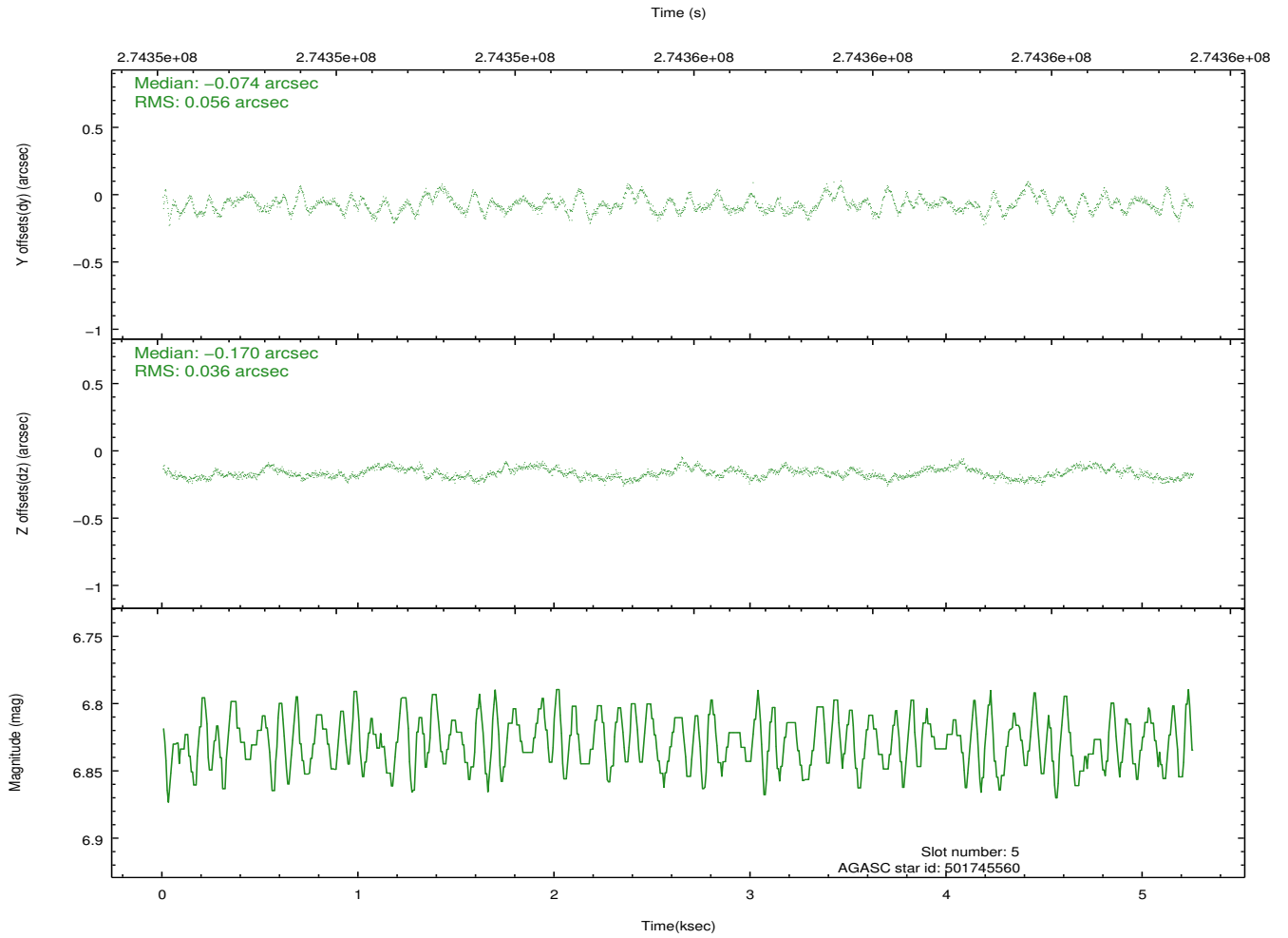
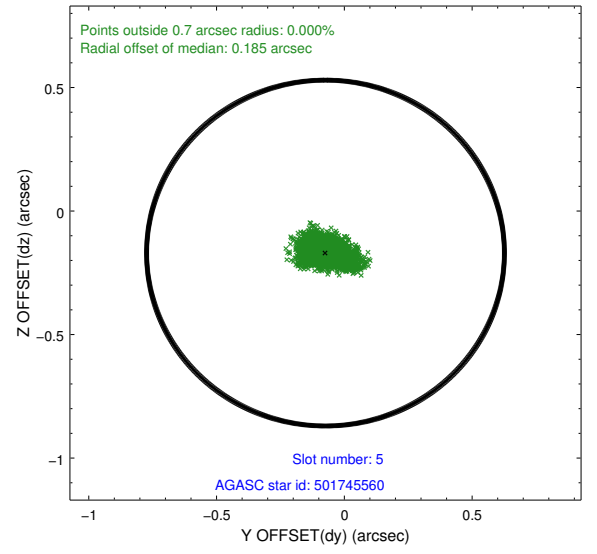
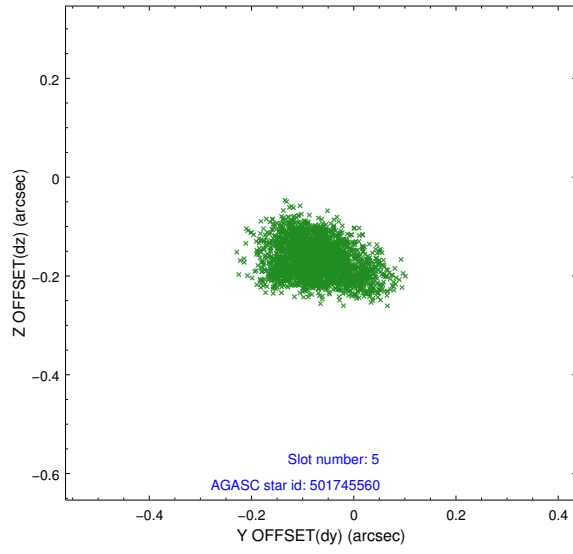
### 2.4.1 Slot 3



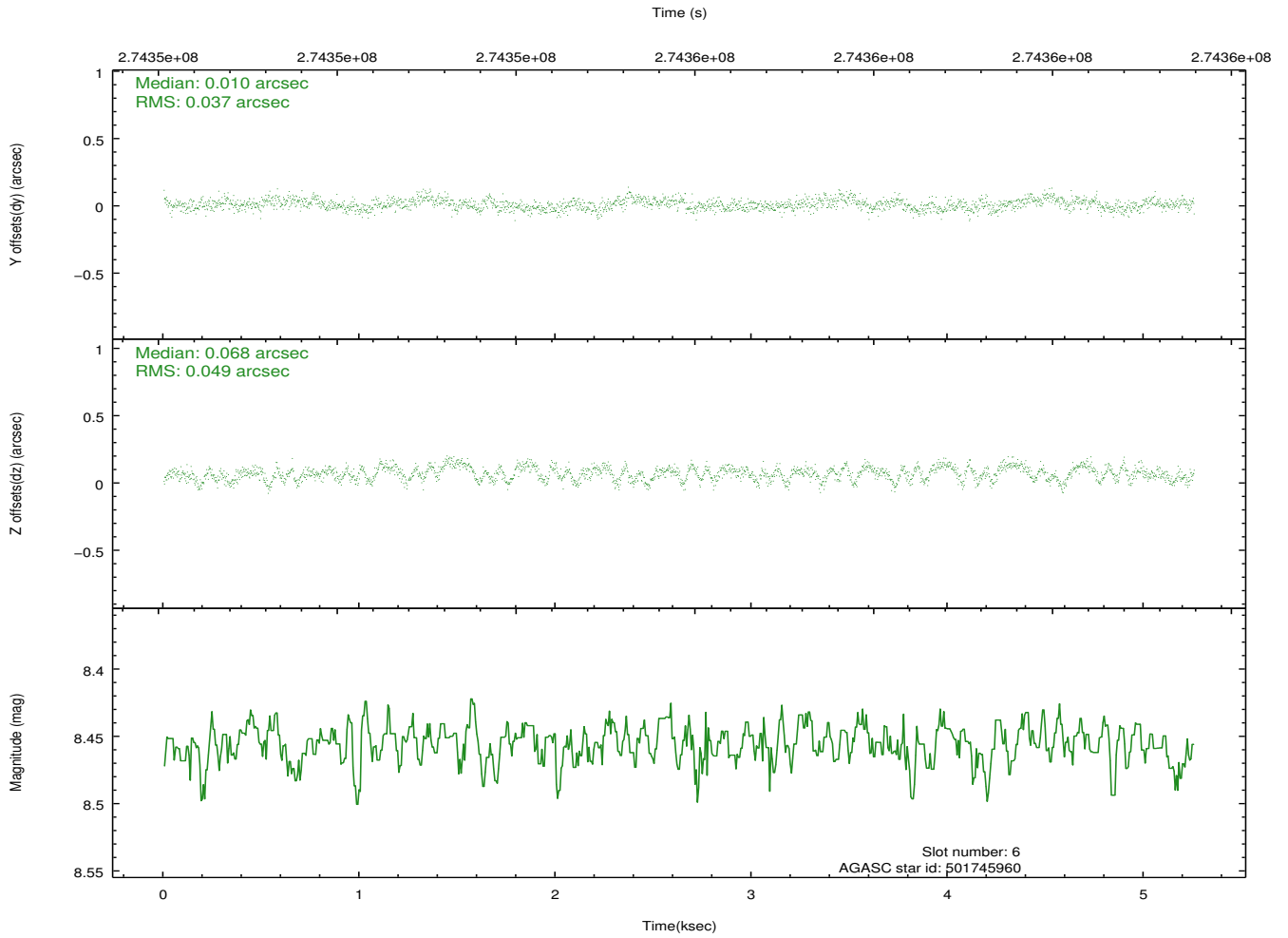
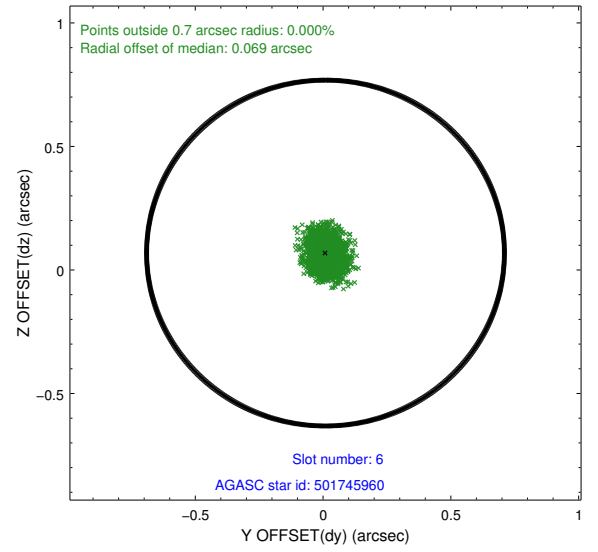
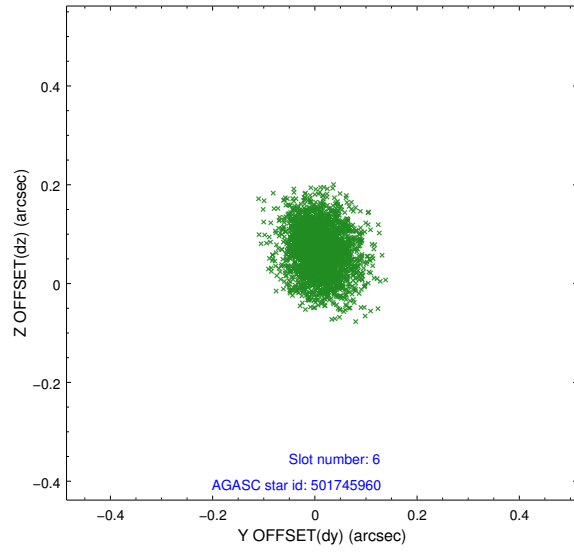
## 2.4.2 Slot 4



### 2.4.3 Slot 5

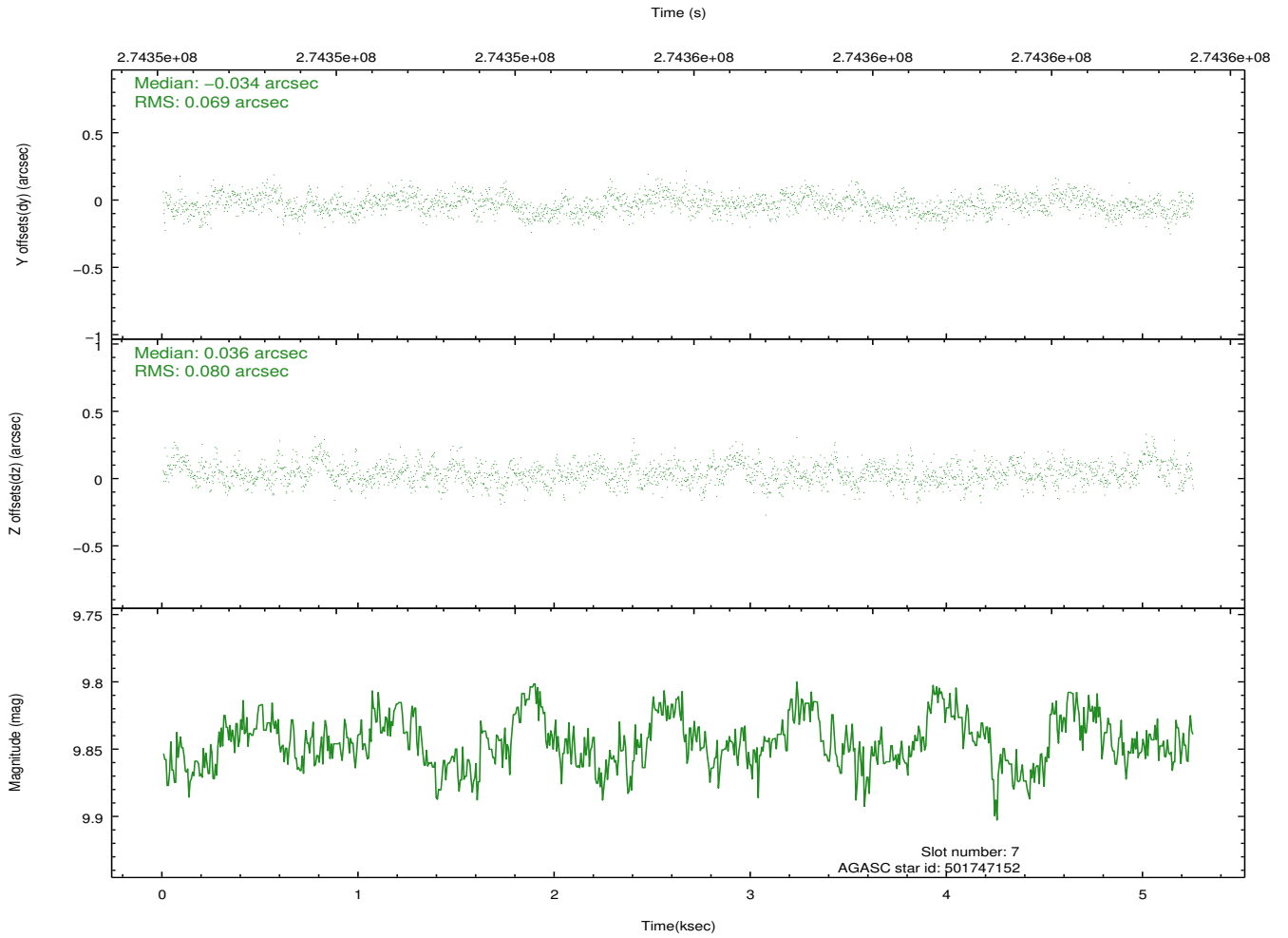
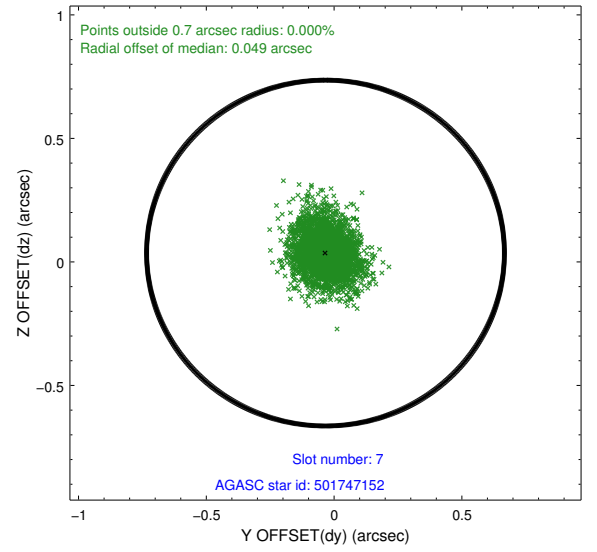
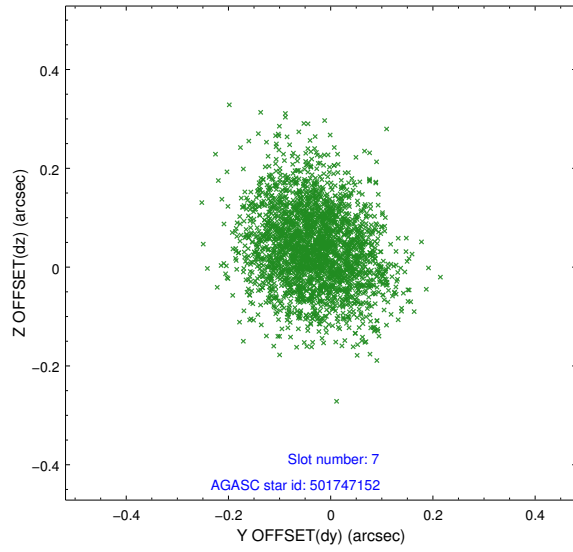


## 2.4.4 Slot 6



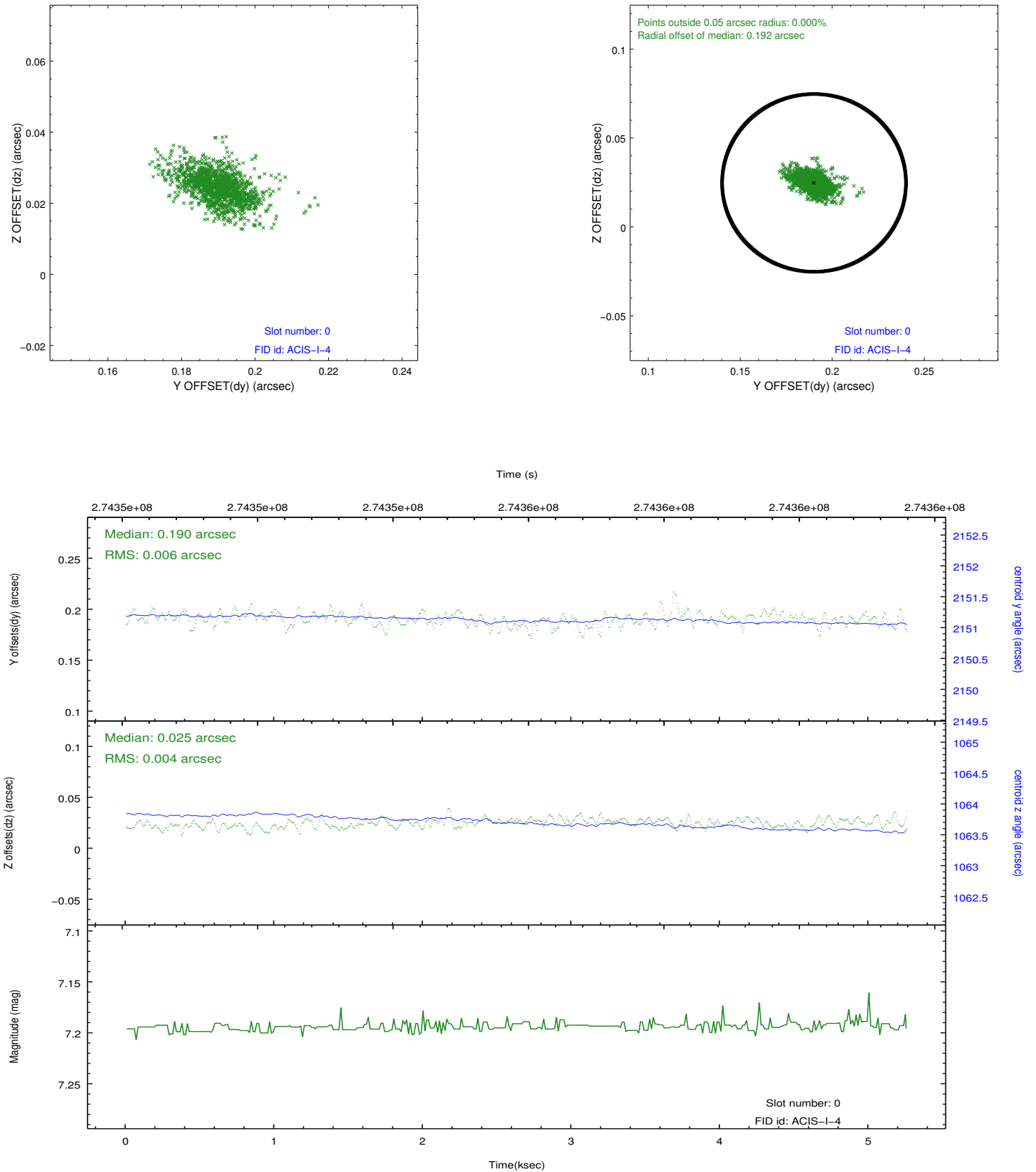


## 2.4.5 Slot 7

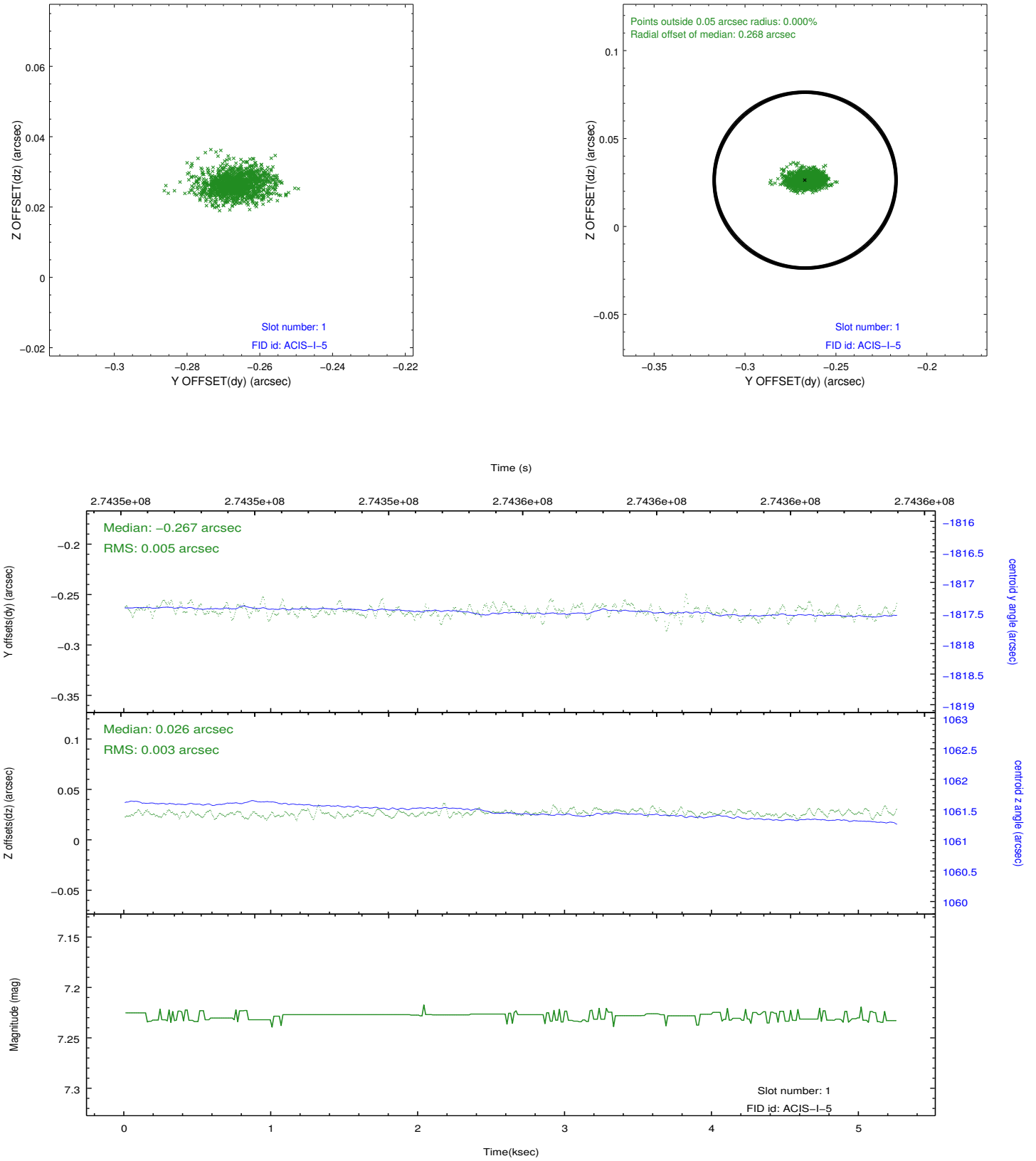


## 2.5 FID Slots

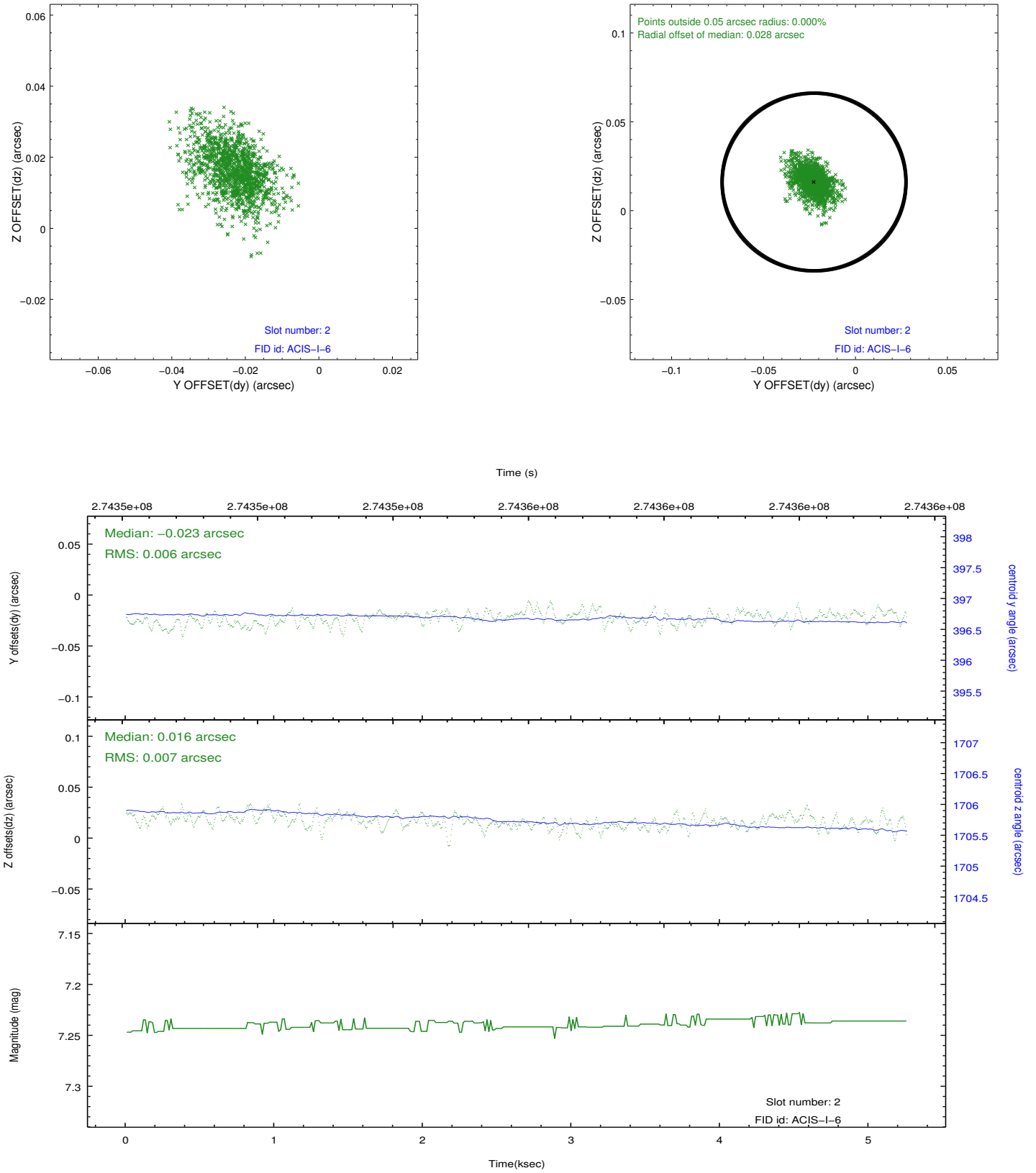
### 2.5.1 Slot 0



## 2.5.2 Slot 1



### 2.5.3 Slot 2



## A Summary

### A.1 Status

V&V Scientist	Jen Lauer
V&V Date (YYYY-MM-DD)	2012.04.09
V&V Edition	1
V&V Disposition and Status	OK
V&V Charge Time	5.03125904

### A.2 Comments