

V&V Reference Report

L2 ASCDS Version : 8.4.3

Observation 6771 - L2 Version 3
Chandra X-Ray Center

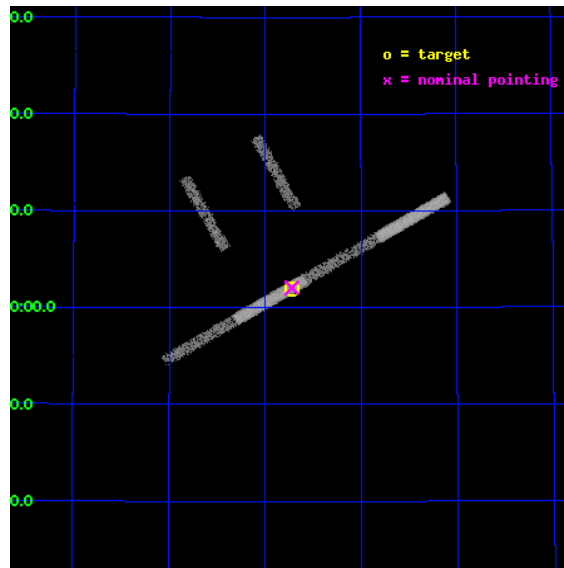
L2 Processing Date : Apr 5 2012

Contents

1	Front	2
2	OBI	3
2.1	OBI	3
2.1.1	Images	3
2.1.2	Bias	3
2.1.3	Parameters	4
2.1.4	Events	4
2.2	Compared Parameters	5
2.3	Aspect	6
2.4	Star Slots	9
2.4.1	Slot 3	9
2.4.2	Slot 4	10
2.4.3	Slot 5	11
2.4.4	Slot 6	12
2.5	FID Slots	13
2.5.1	Slot 0	13
2.5.2	Slot 1	14
2.5.3	Slot 2	15
A	Summary	16
A.1	Status	16
A.2	Comments	16

1 Front

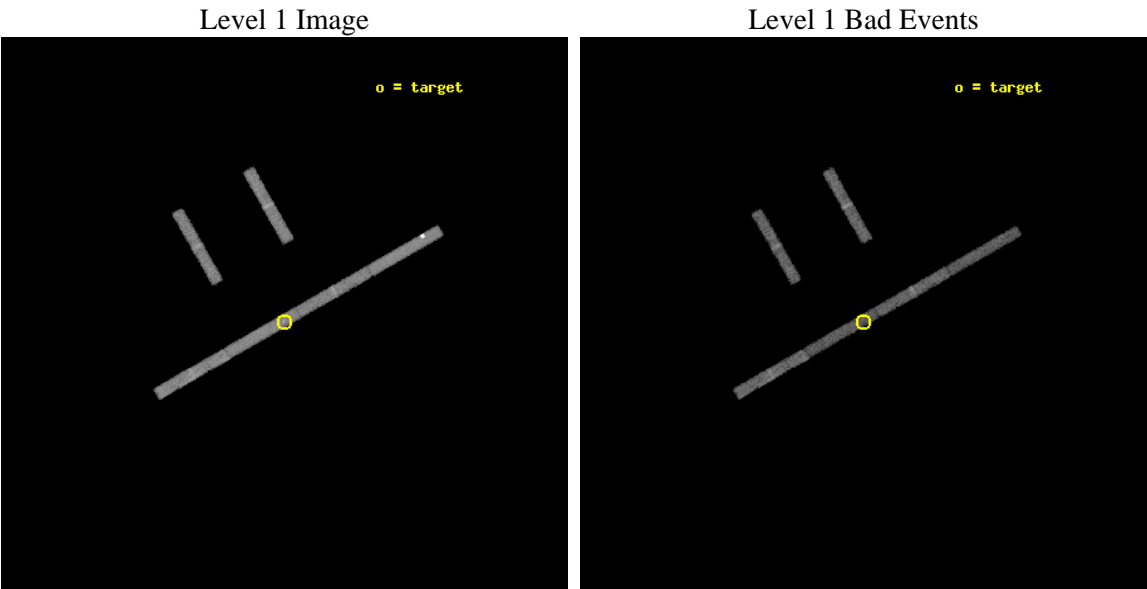
seq_num	701189	Sequence number
obs_id	6771	Observation id
title	Exploring the X-Ray Properties of Active Galactic Nuclei with Double-Peaked Balmer Lines	Proposal title
observer	Professor Gordon Garmire	Principal investigator
object	SDSSJ1004+4801	Source name
dtcycle	0	
cycle	P	events from which exps? Prim/Second/Both
ra_targ	151.180833	Observer's specified target RA [deg]
dec_targ	48.032361	Observer's specified target Dec [deg]
ra_nom	151.18046321488	Nominal RA [deg]
dec_nom	48.034448732145	Nominal Dec [deg]
roll_nom	150.23590787474	Nominal Roll [deg]
revision	3	Processing version of data
ontime	9133.5998444557	Sum of GTIs [s]
livetime	8627.7662354515	Livetime [s]
ontime2	9133.5998444557	Sum of GTIs [s]
ontime3	9133.5998444557	Sum of GTIs [s]
ontime5	9133.5998444557	Sum of GTIs [s]
ontime6	9133.5998444557	Sum of GTIs [s]
ontime7	9133.5998444557	Sum of GTIs [s]
ontime8	9133.5998444557	Sum of GTIs [s]
l2events	17873	Number of level 2 events



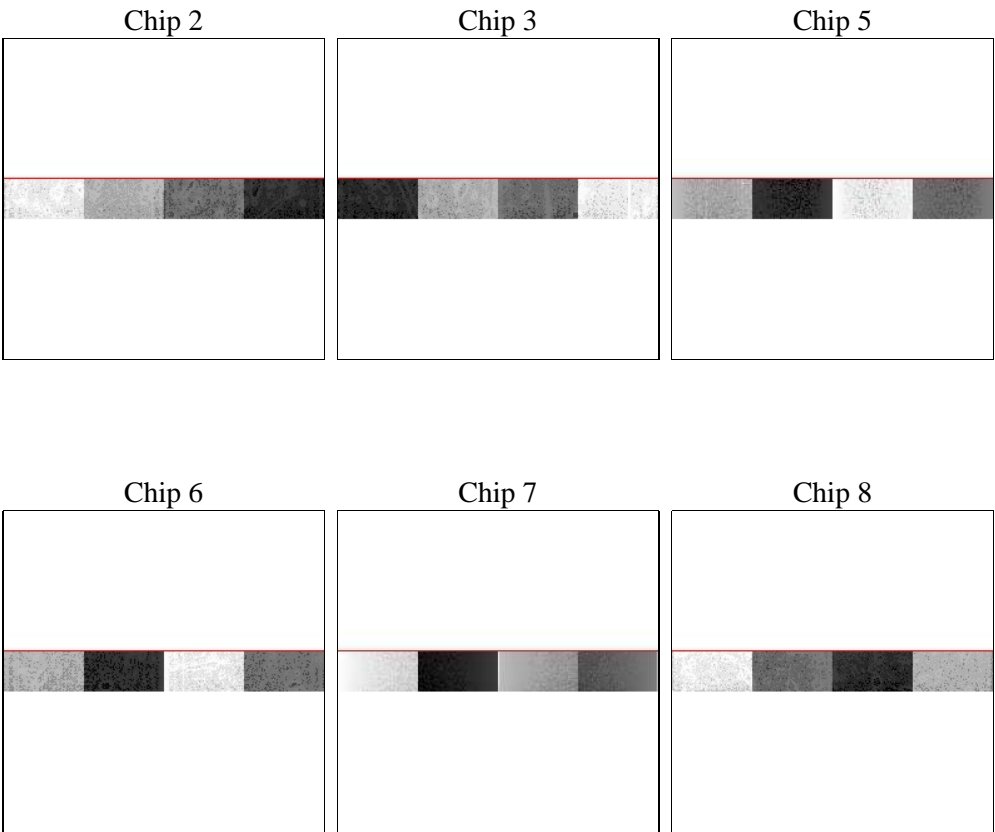
2 OBI

2.1 OBI

2.1.1 Images



2.1.2 Bias



Chip 6



Chip 7



Chip 8



2.1.3 Parameters

obi_num	0	Obi number	sched_exp_time	9000.000000	[s] Scheduled observation exposure time
ascdsver	8.4.3.1	Processing system revision	ontime	9133.5998444557	Sum of GTIs [s]
caldsver	4.4.9	 	ontime2	9133.5998444557	Sum of GTIs [s]
date	2012-04-04T19:54:55	Date and time of file creation	ontime3	9133.5998444557	Sum of GTIs [s]
revision	3	Processing version of data	ontime5	9133.5998444557	Sum of GTIs [s]
			ontime6	9133.5998444557	Sum of GTIs [s]
			ontime7	9133.5998444557	Sum of GTIs [s]
			ontime8	9133.5998444557	Sum of GTIs [s]
			l1events	108343	Number of level 1 events

2.1.4 Events

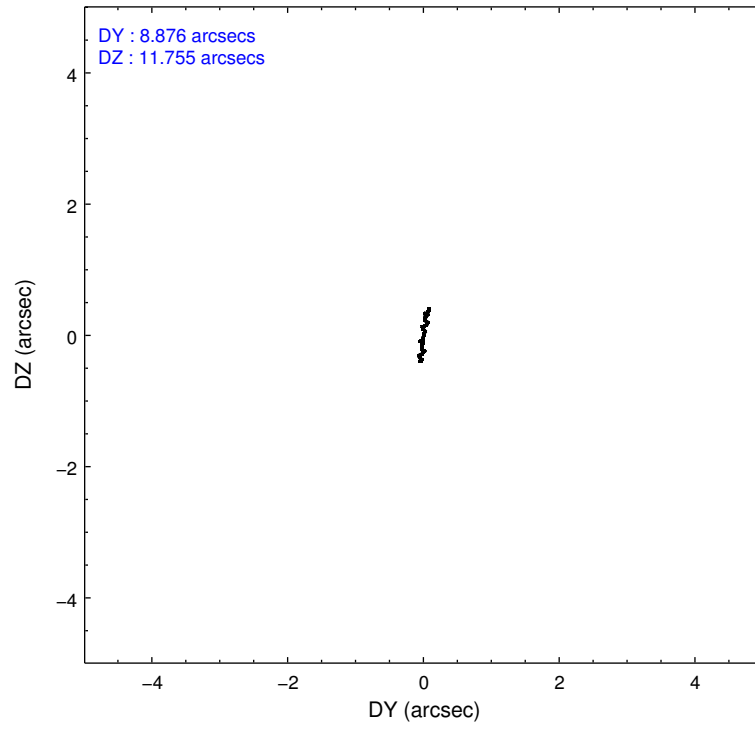
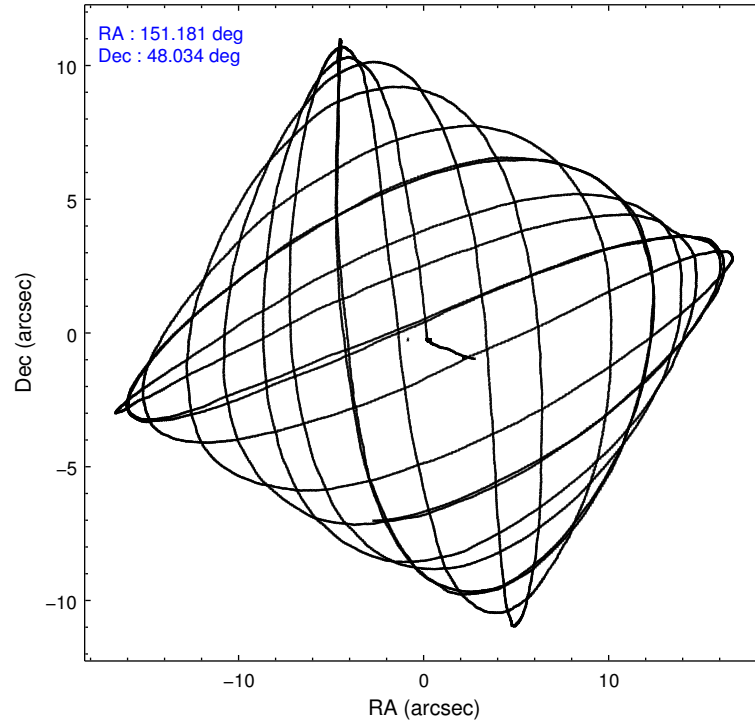
	ccd 2	ccd 3	ccd 5	ccd 6	ccd 7	ccd 8
level 1 events	15778	13483	29736	14397	16295	18654
rejected events	14324	12102	10569	12967	9652	15857
rejected %	90%	89%	35%	90%	59%	85%

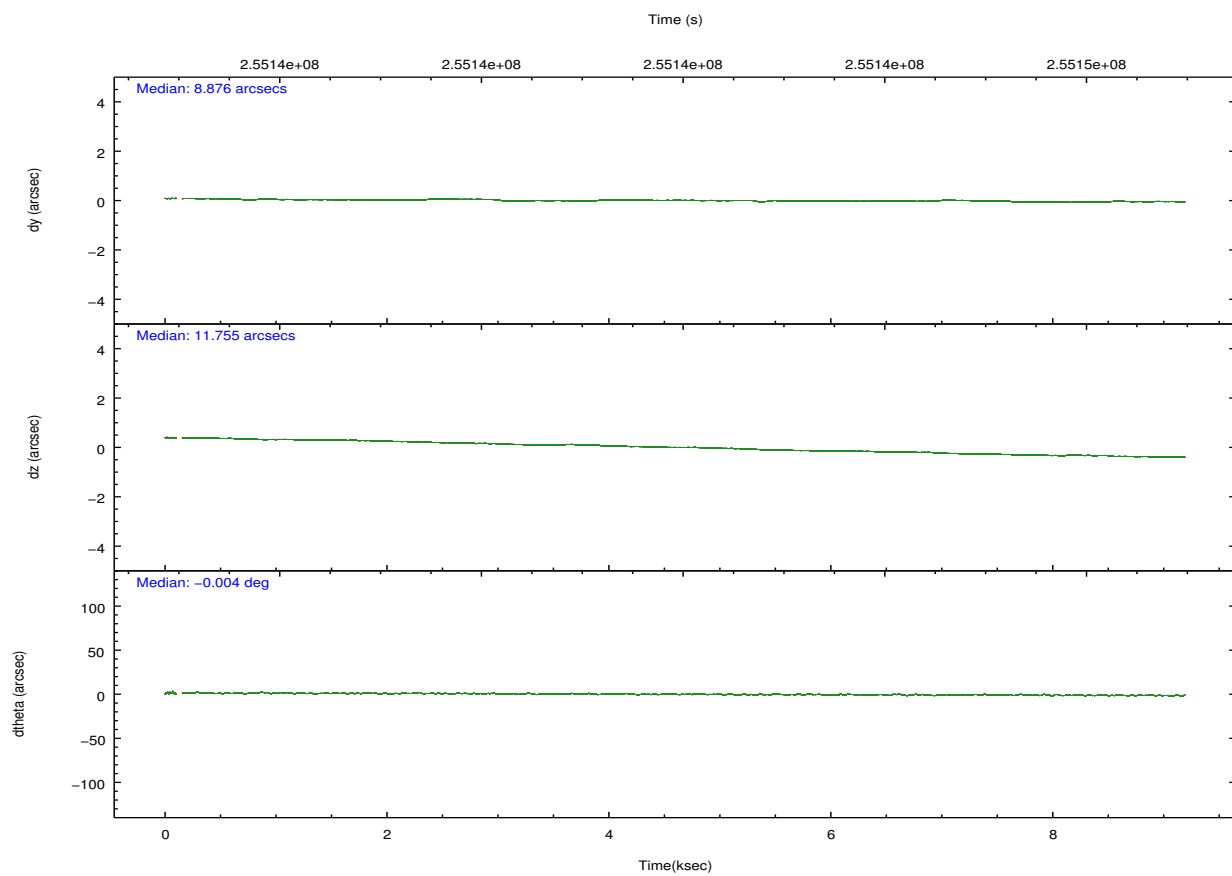
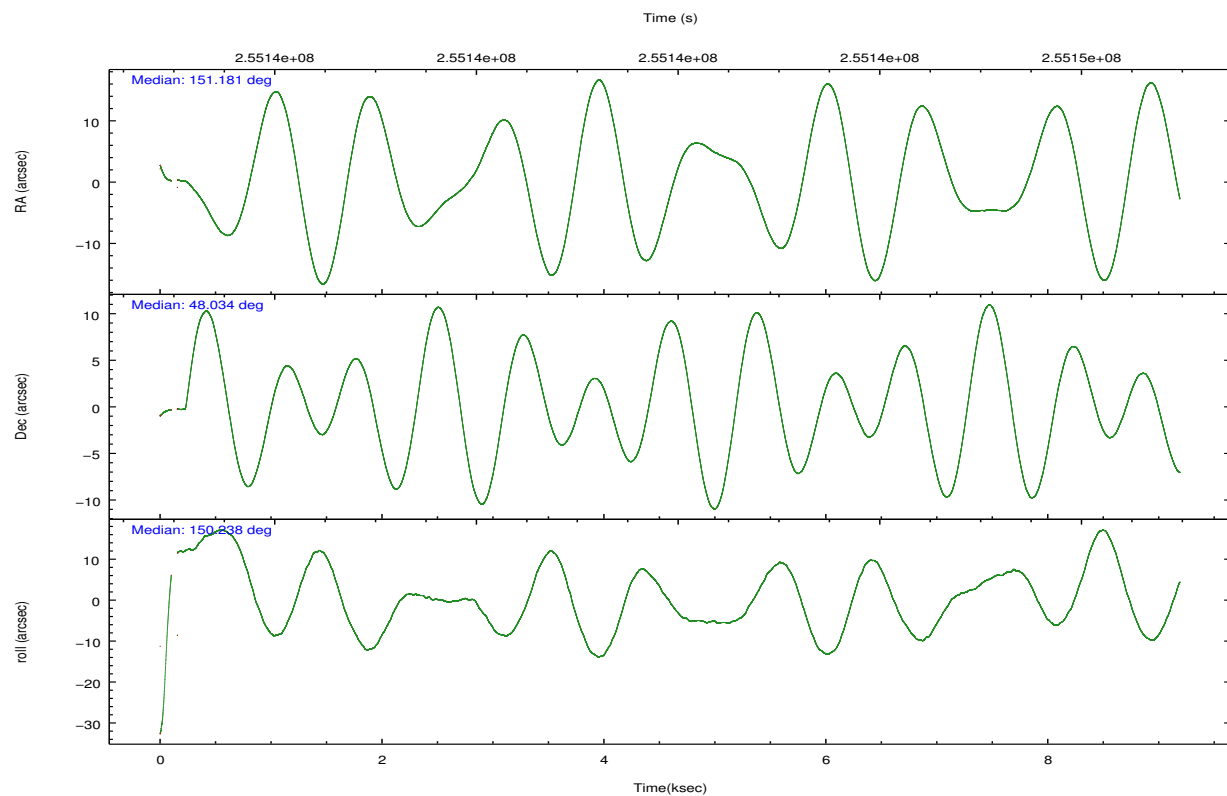
	ccd 2	ccd 3	ccd 5	ccd 6	ccd 7	ccd 8
grade 0 events	557	569	11332	496	809	771
	3%	4%	38%	3%	4%	4%
grade 1 events	4	3	38	1	16	13
	0%	0%	0%	0%	0%	0%
grade 2 events	255	249	4660	271	1495	656
	1%	1%	15%	1%	9%	3%
grade 3 events	250	255	496	249	796	348
	1%	1%	1%	1%	4%	1%
grade 4 events	280	209	536	244	795	335
	1%	1%	1%	1%	4%	1%
grade 5 events	505	471	1430	529	1432	621
	3%	3%	4%	3%	8%	3%
grade 6 events	236	220	3724	303	3325	1017
	1%	1%	12%	2%	20%	5%
grade 7 events	13691	11507	7520	12304	7627	14893
	86%	85%	25%	85%	46%	79%

2.2 Compared Parameters

Parameter	Planned	Actual	Parameter	Planned	Actual
Instrument	ACIS	ACIS	Obspar format version number	7	7
Detector	ACIS-235678	ACIS-235678	Obspar file type	PREDICTED	ACTUAL
Grating	NONE	NONE	Obspar update status	NONE	UPDATED
Data mode	FAINT	FAINT	Number of optional ACIS chips dropped	0	0
Observation mode	POINTING	POINTING	On-chip summing requested	N	N
[deg] Pointing RA	151.221179	151.1804632148836	Subarray requested	CUSTOM	1/8
[deg] Pointing Dec	48.034905	48.03444873214548	Subarray start row	449	449
[deg] Pointing Roll	150.049054	150.235907874735	Subarray row count	128	128
[mm] SIM focus pos	-0.684267	-0.6828225247311905	Alternating exposures requested	N	N
[mm] SIM defocus	0	0.001444936568705701	[s] Primary exposure time	0.000000	0.7
[mm] SIM translation stage pos	-190.132523	-190.1425803651734			
[mm] SIM translation stage offset	0	0.01005778216563158			
[s] Observation start time (MET)	255137520.184000	255136358.88997			
Observation start date	2006-01-31T23:30:55	2006-01-31T23:12:38			
[s] Observation end time (MET)	255146520.184000	255147455.54048			
Observation end date	2006-02-01T02:00:55	2006-02-01T02:17:35			
Read mode	TIMED	TIMED			

2.3 Aspect



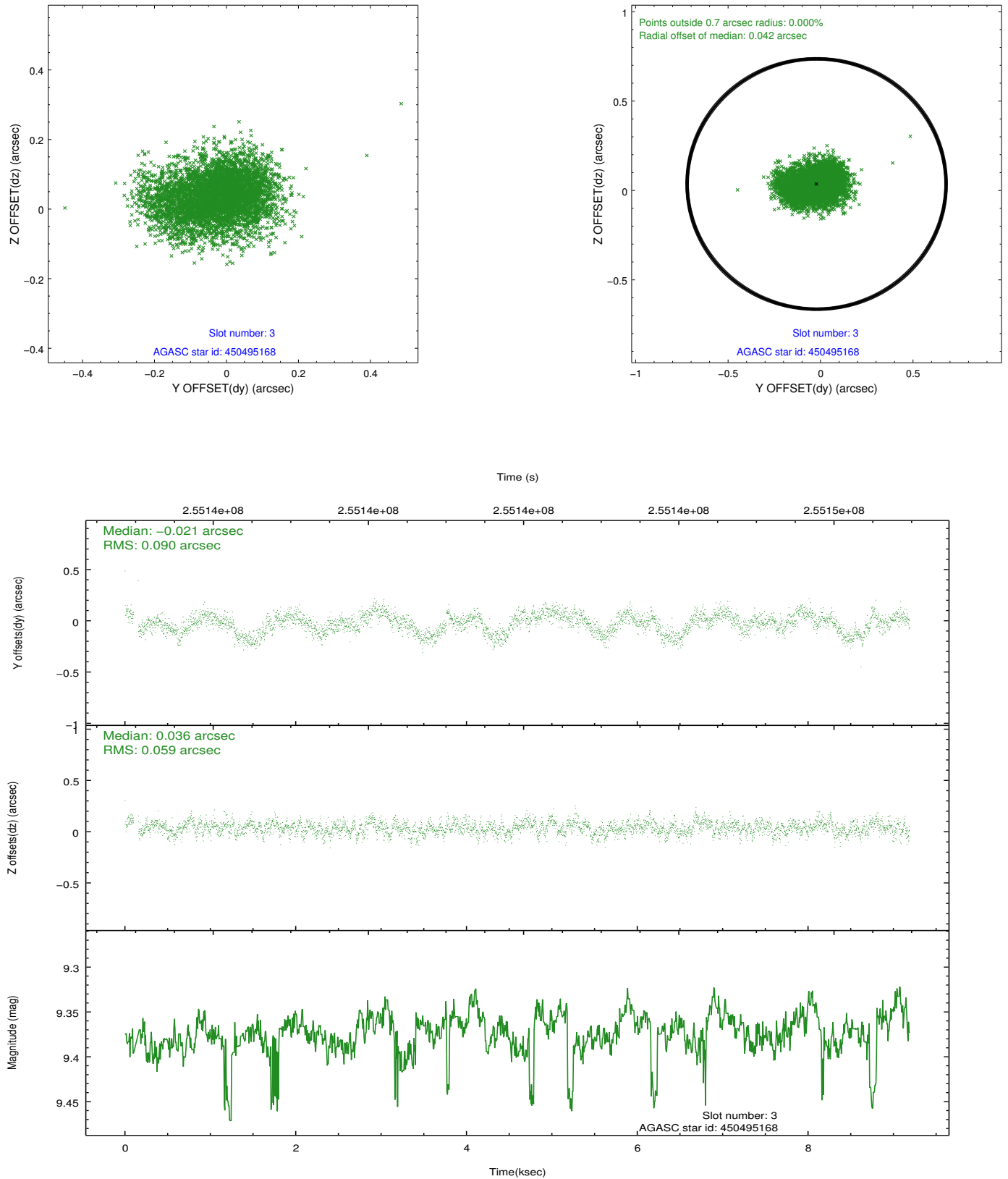


Slot Statistics

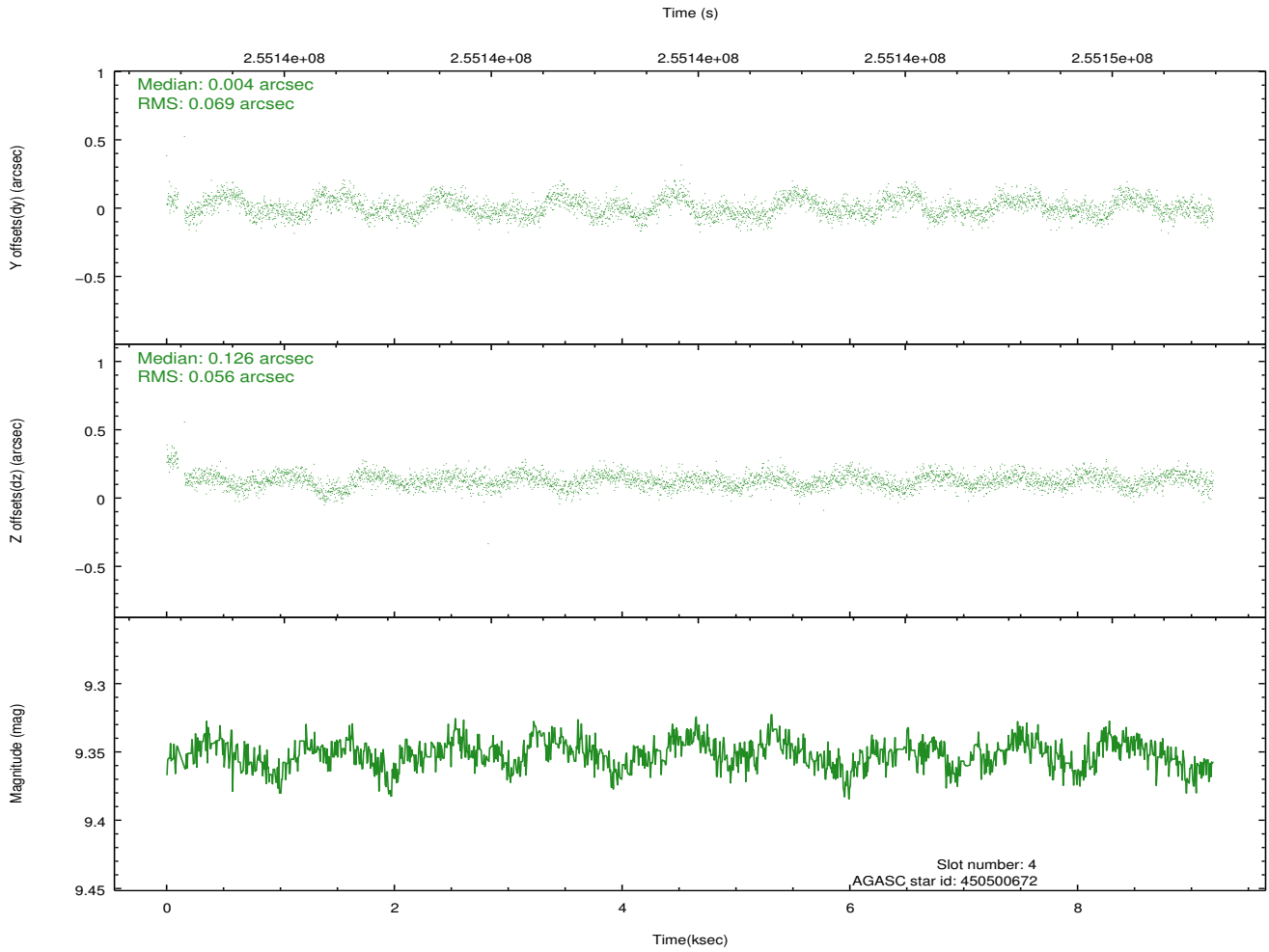
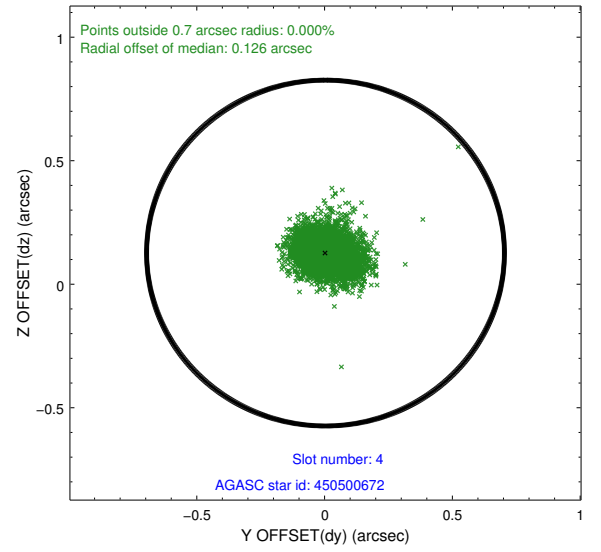
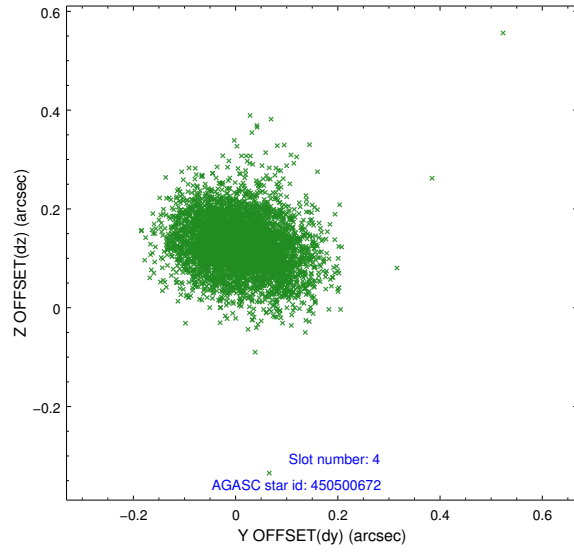
	status	id	mag	n_pts	med_dy	med_dz	drl
	FID	ACIS-S-2	7.10	2229	-0.020	-0.019	0.010
	FID	ACIS-S-4	7.21	2229	0.126	0.015	0.006
	FID	ACIS-S-5	7.23	2229	-0.138	0.013	0.010
	GUIDE	450495168	9.37	4443	-0.021	0.036	0.116
	GUIDE	450500672	9.35	4455	0.004	0.126	0.092
	GUIDE	450501384	9.22	4457	0.067	-0.096	0.096
	GUIDE	450504368	9.82	4456	-0.038	-0.066	0.126
0.0000.0000.0000.0000000.00000000.000.00							

2.4 Star Slots

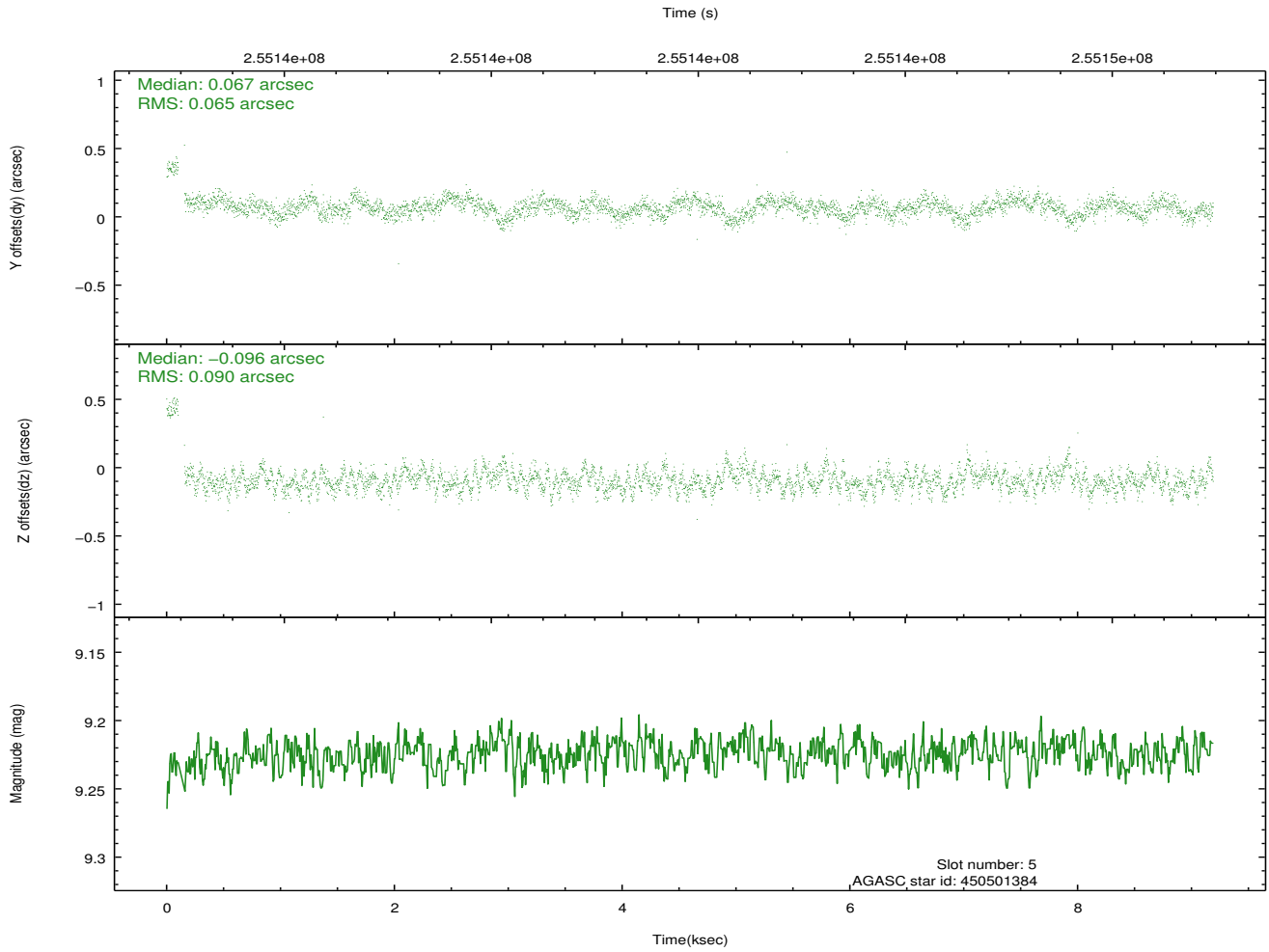
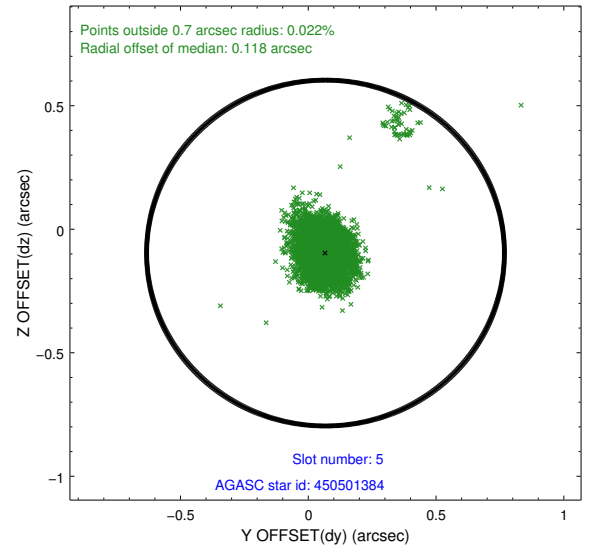
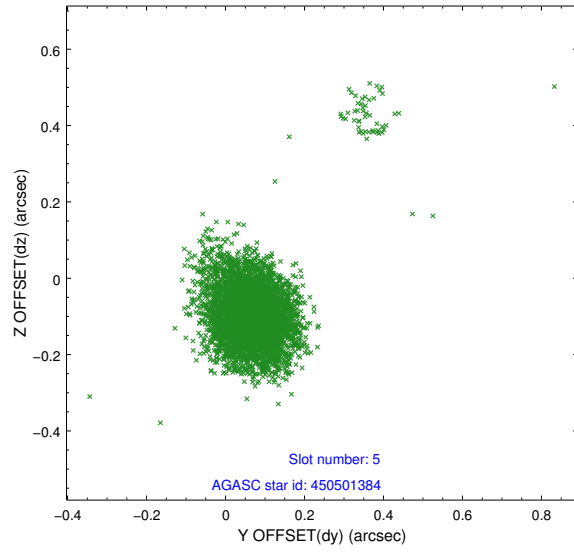
2.4.1 Slot 3



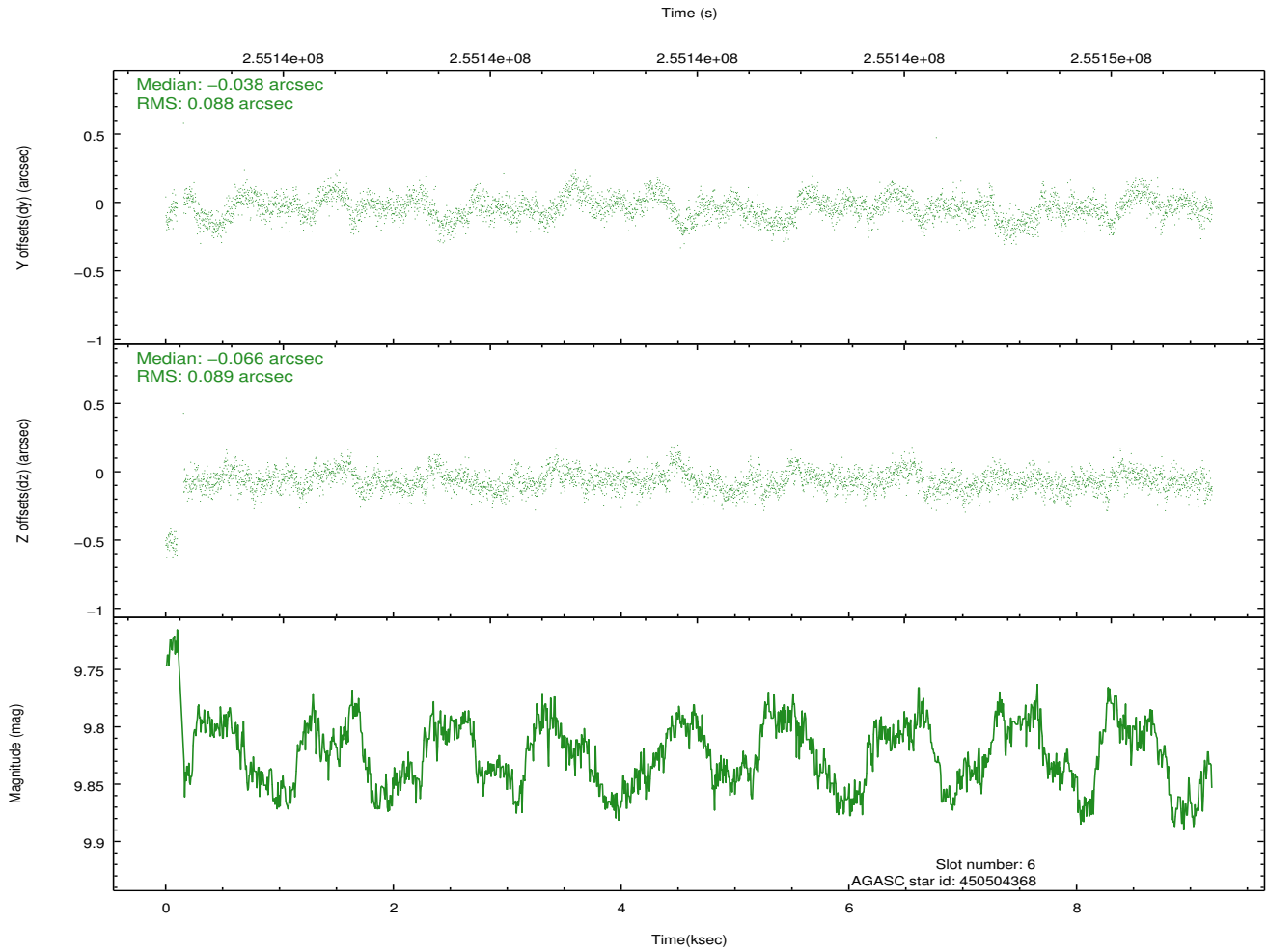
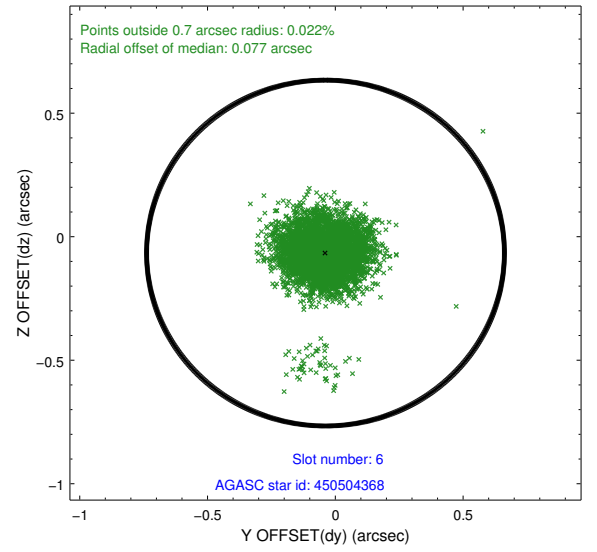
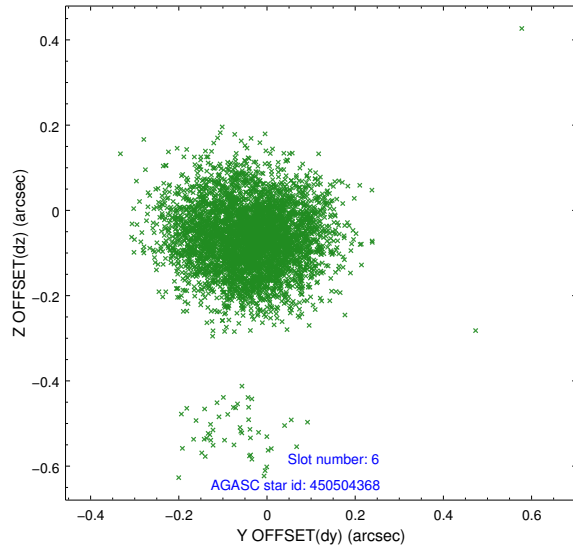
2.4.2 Slot 4



2.4.3 Slot 5

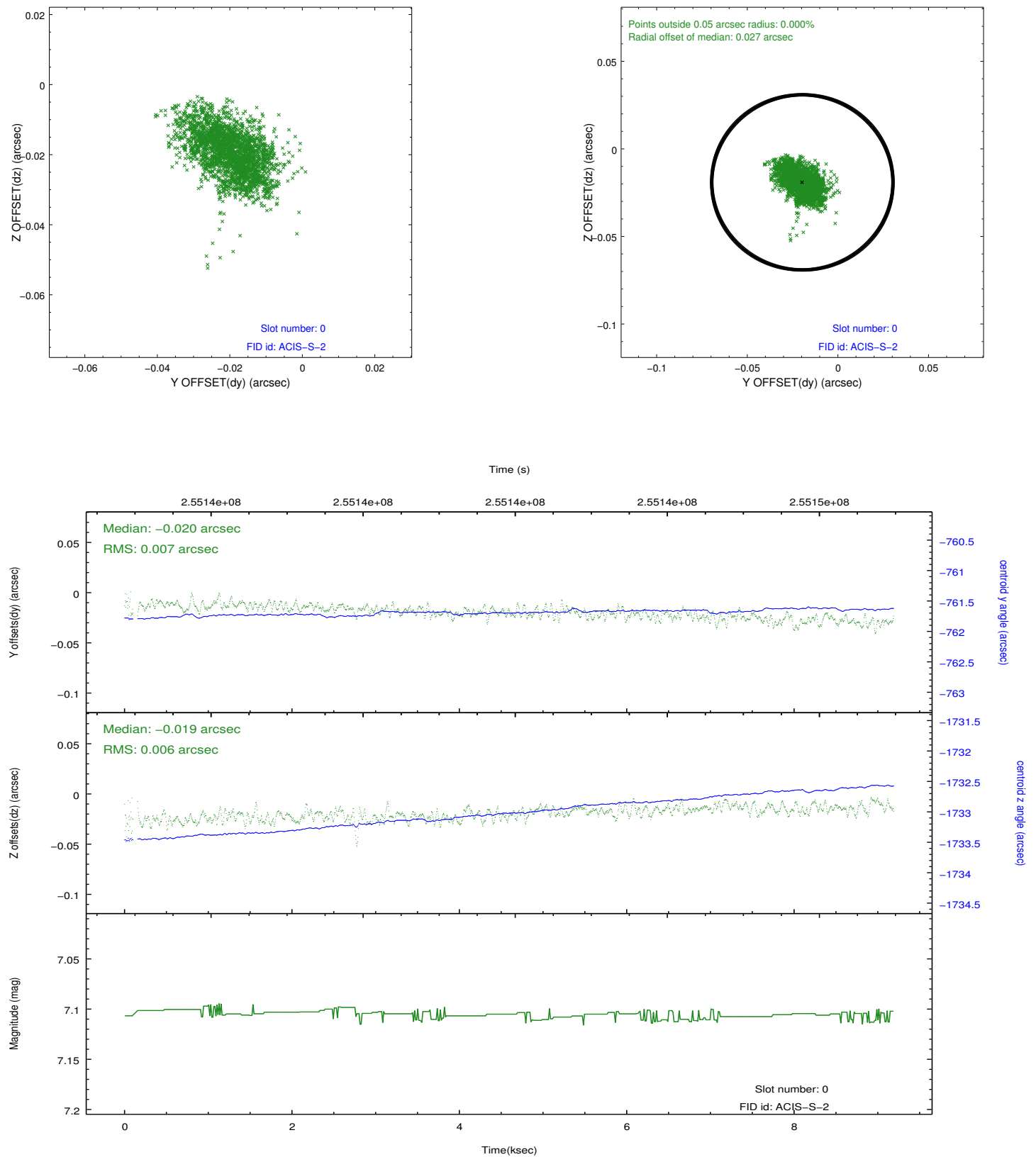


2.4.4 Slot 6

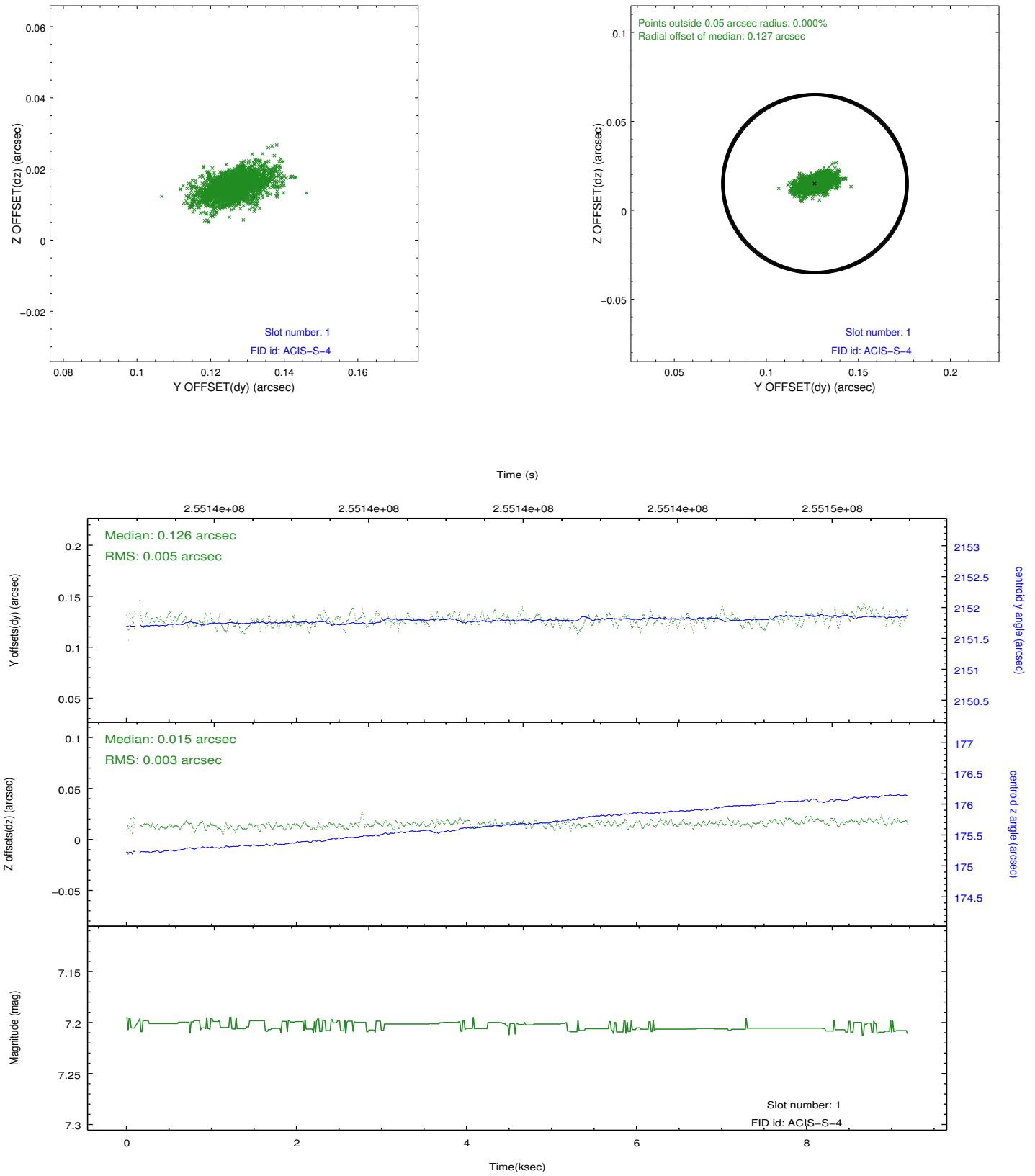


2.5 FID Slots

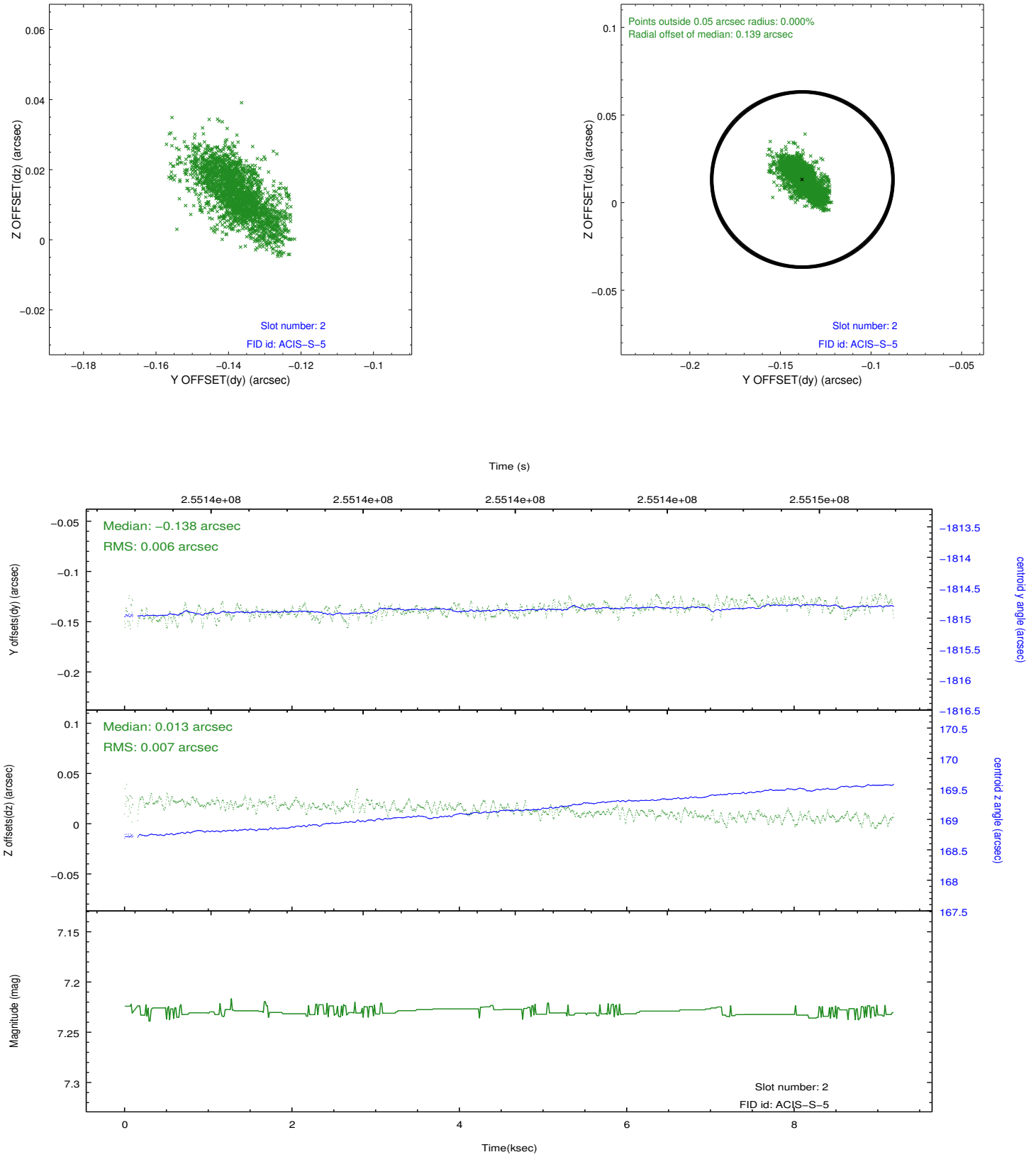
2.5.1 Slot 0



2.5.2 Slot 1



2.5.3 Slot 2



A Summary

A.1 Status

V&V Scientist	Joy Nichols
V&V Date (YYYY-MM-DD)	2012.04.05
V&V Edition	1
V&V Disposition and Status	OK
V&V Charge Time	9.13359984

A.2 Comments

Optical photometry of target during the observation in slot 7. First few seconds has bad aspect. Time not included in GTIs.