

V&V Reference Report

L2 ASCDS Version : 8.4.3.1

Observation 6461 - L2 Version 3
Chandra X-Ray Center

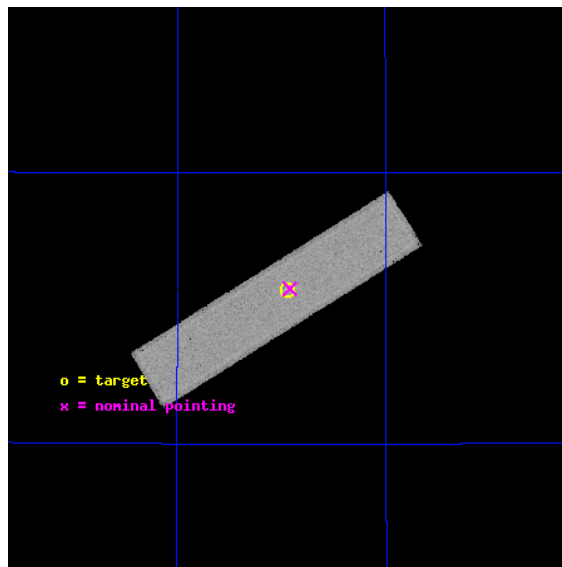
L2 Processing Date : Aug 11 2012

Contents

| | | |
|----------|-------------------------------|-----------|
| 1 | Front | 2 |
| 2 | OBI | 3 |
| 2.1 | OBI | 3 |
| 2.1.1 | Images | 3 |
| 2.1.2 | Parameters | 4 |
| 2.1.3 | Events | 4 |
| 2.2 | Compared Parameters | 5 |
| 2.3 | Aspect | 6 |
| 2.4 | Star Slots | 9 |
| 2.4.1 | Slot 3 | 9 |
| 2.4.2 | Slot 4 | 10 |
| 2.4.3 | Slot 5 | 11 |
| 2.4.4 | Slot 6 | 12 |
| 2.4.5 | Slot 7 | 13 |
| 2.5 | FID Slots | 14 |
| 2.5.1 | Slot 0 | 14 |
| 2.5.2 | Slot 1 | 15 |
| 2.5.3 | Slot 2 | 16 |
| A | Summary | 17 |
| A.1 | Status | 17 |
| A.2 | Comments | 17 |

1 Front

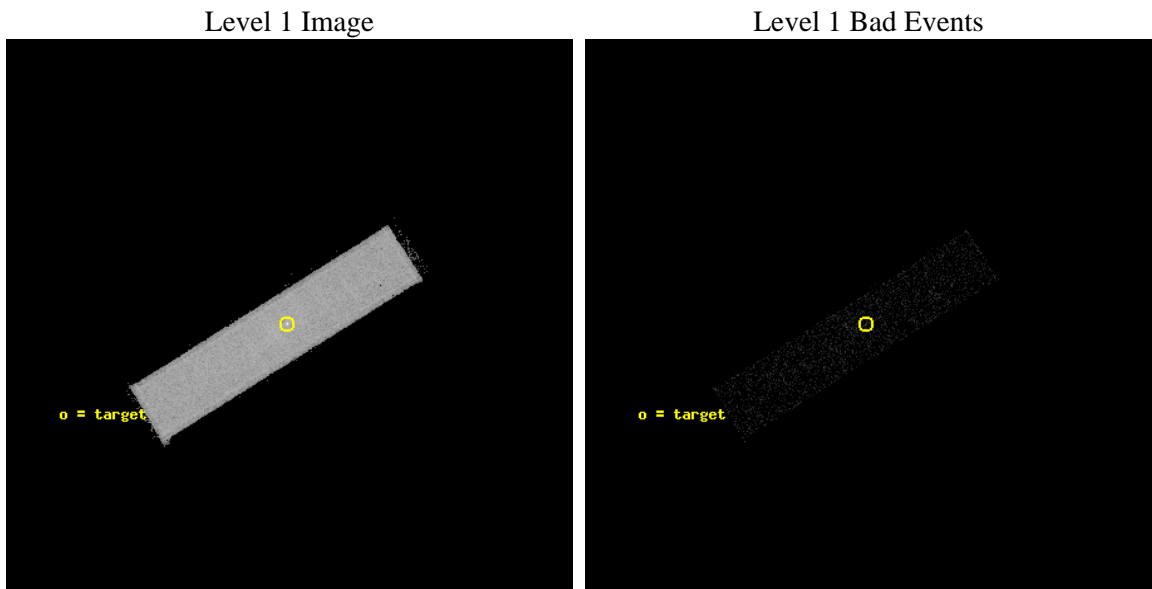
| | | |
|----------|--|---------------------------------------|
| seq_num | 290554 | Sequence number |
| obs_id | 6461 | Observation id |
| title | AO7 Measurements of the optical/UV Transmission of the HRC and ACIS Filters. | Proposal title |
| observer | Dr. CXC Calibration | Principal investigator |
| object | Vega | Source name |
| ra_targ | 279.235 | Observer's specified target RA [deg] |
| dec_targ | 38.783778 | Observer's specified target Dec [deg] |
| ra_nom | 279.22993645939 | Nominal RA [deg] |
| dec_nom | 38.786308645212 | Nominal Dec [deg] |
| roll_nom | 148.11304133217 | Nominal Roll [deg] |
| revision | 3 | Processing version of data |
| ontime | 2151.7313504815 | [s] |
| livetime | 2135.8622301906 | Ontime multiplied by DTCOR |
| l2events | 106836 | Number of level 2 events |



2 OBI

2.1 OBI

2.1.1 Images



2.1.2 Parameters

| | | | | | |
|----------|---------------------|--------------------------------|----------------|-----------------|---|
| obi_num | 0 | Obi number | sched_exp_time | 2000.000000 | [s] Scheduled observation exposure time |
| ascdsver | 8.4.5 | Processing system revision | ontime | 2151.7313504815 | [s] |
| caldbver | 4.5.1.1 | | l1events | 142442 | Number of level 1 events |
| date | 2012-08-11T07:36:39 | Date and time of file creation | | | |
| revision | 3 | Processing version of data | | | |

2.1.3 Events

Level 1 Events

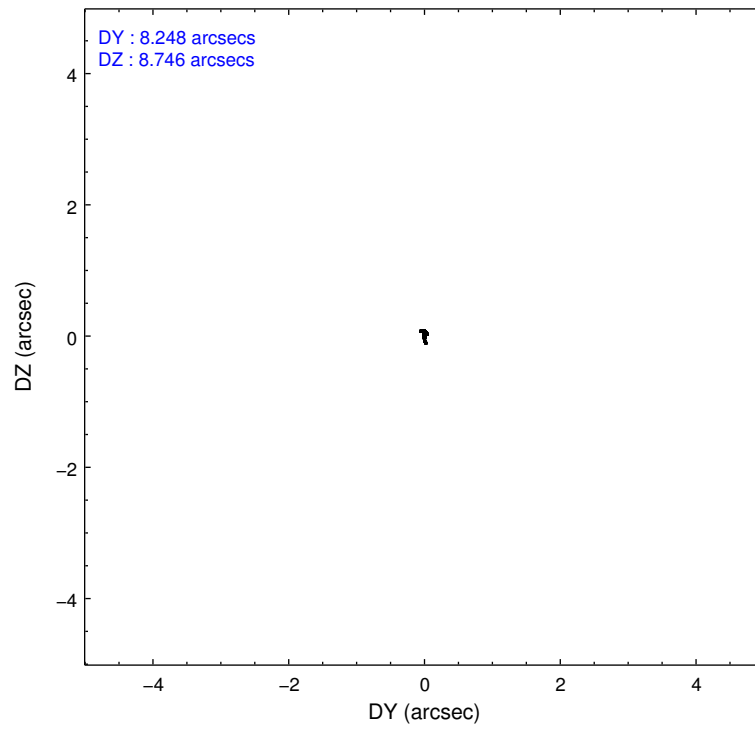
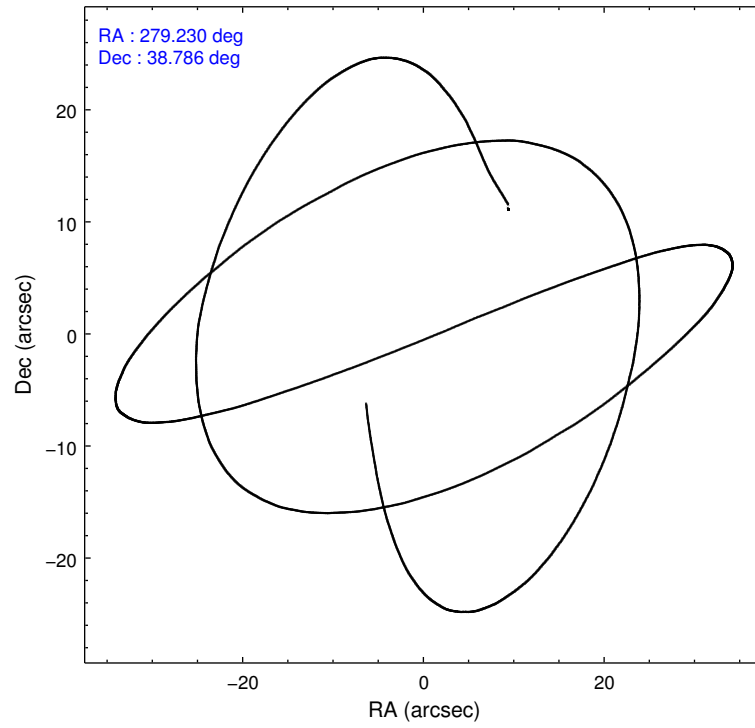
| | segment 1 | segment 2 | segment 3 |
|-----------------|----------------------|----------------------|----------------------|
| level 1 events | 0 | 142442 | 0 |
| rejected events | 0 | 10428 | 0 |
| rejected % | 0% | 7% | 0% |

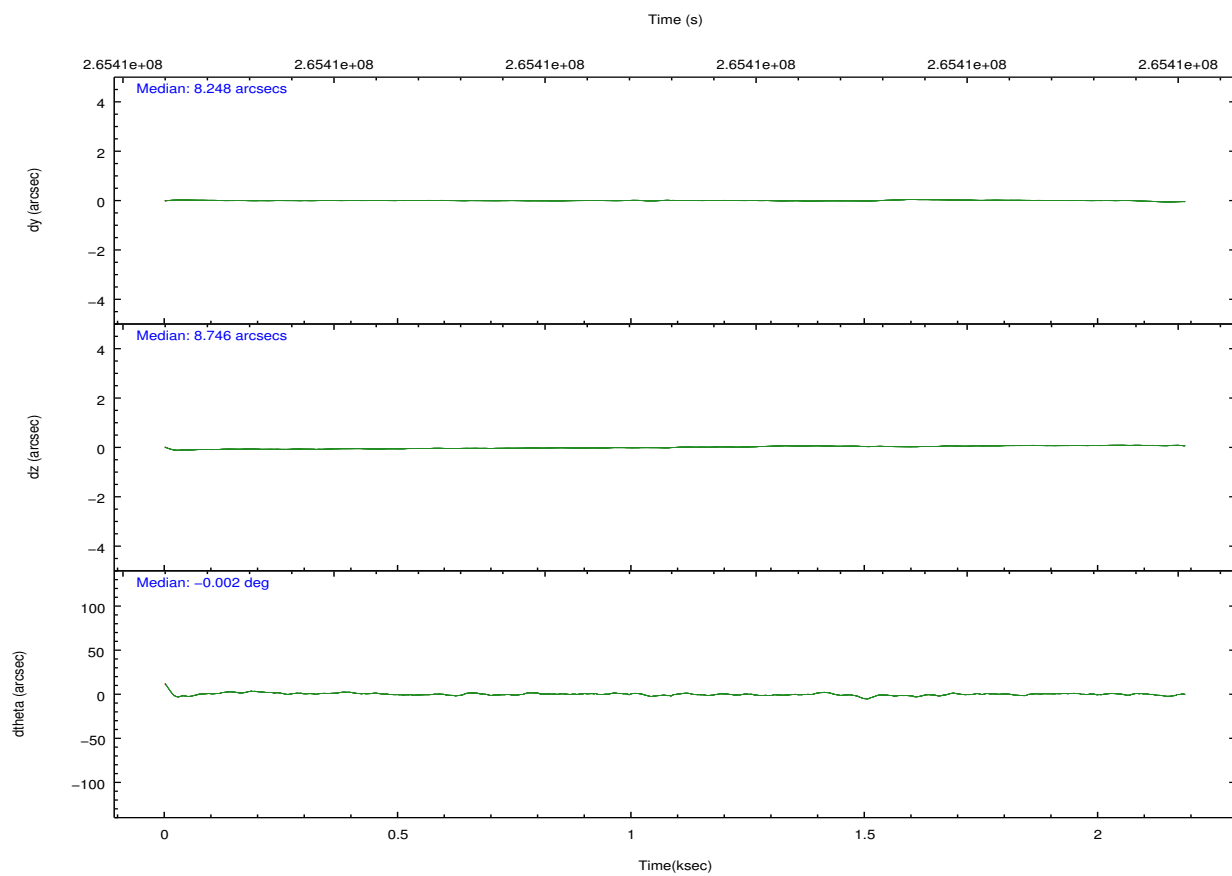
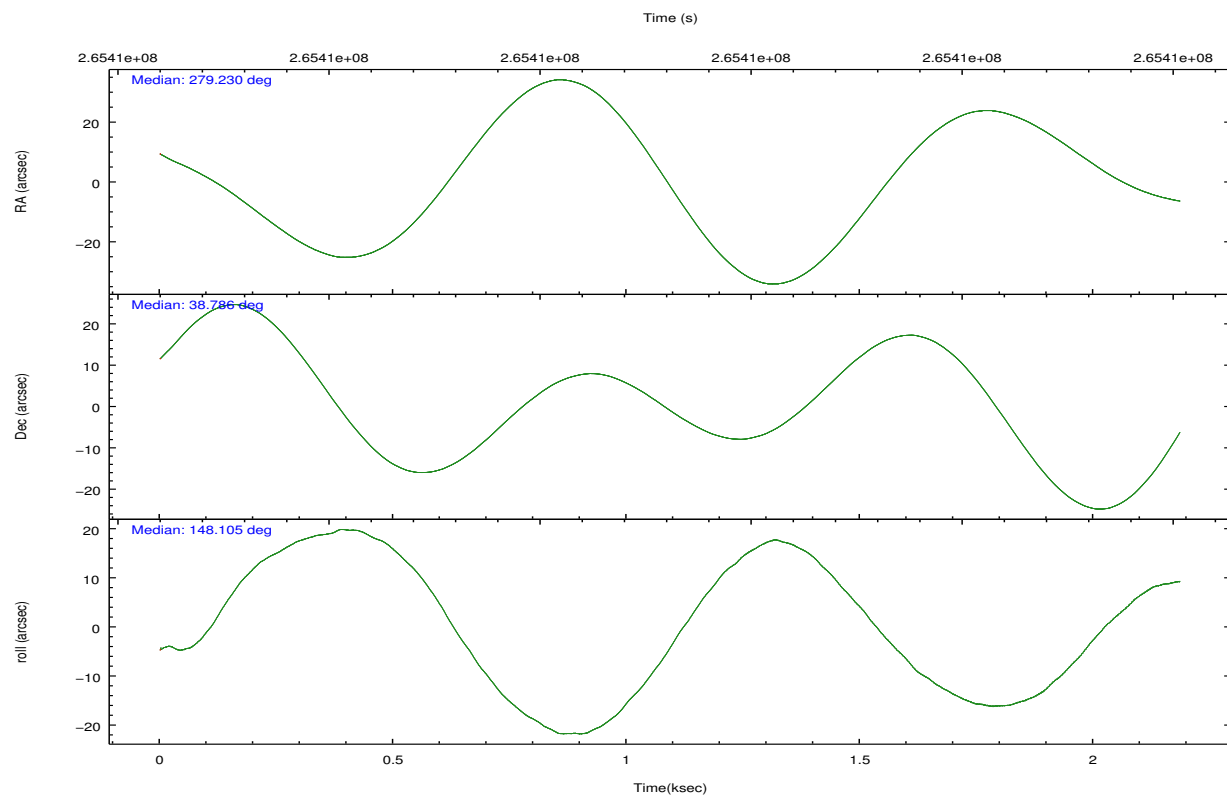
2.2 Compared Parameters

| Parameter | Planned | Actual |
|-----------------------------------|-----------------------|----------------------|
| Instrument | HRC | HRC |
| Detector | HRC-S | HRC-S |
| Grating | NONE | NONE |
| Data mode | OBSERVING | OBSERVING |
| Observation mode | POINTING | POINTING |
| [deg] Pointing RA | 279.266685 | 279.2299364593912 |
| [deg] Pointing Dec | 38.786838 | 38.78630864521233 |
| [deg] Pointing Roll | 148.022708 | 148.1130413321739 |
| [s] Window start time (MET) | 262828865.184000 | 262828865.184000 |
| [s] Window stop time (MET) | 268012865.184000 | 268012865.184000 |
| [mm] SIM focus pos | -1.533336 | -1.526339935833849 |
| [mm] SIM defocus | 7.710433287538843e-07 | 0.006996703570447904 |
| [mm] SIM translation stage pos | 250.455976 | 250.466033080201 |
| [mm] SIM translation stage offset | 0 | -0.01005468664627074 |
| [s] Observation start time (MET) | 265405900.184000 | 265405523.79308 |
| Observation start date | 2006-05-30T19:50:35 | 2006-05-30T19:45:23 |
| [s] Observation end time (MET) | 265407900.184000 | 265408034.0182 |
| Observation end date | 2006-05-30T20:23:55 | 2006-05-30T20:27:14 |

| Parameter | Planned | Actual |
|------------------------------|-----------|---------|
| Obspar format version number | 7 | 7 |
| Obspar file type | PREDICTED | ACTUAL |
| Obspar update status | NONE | UPDATED |

2.3 Aspect



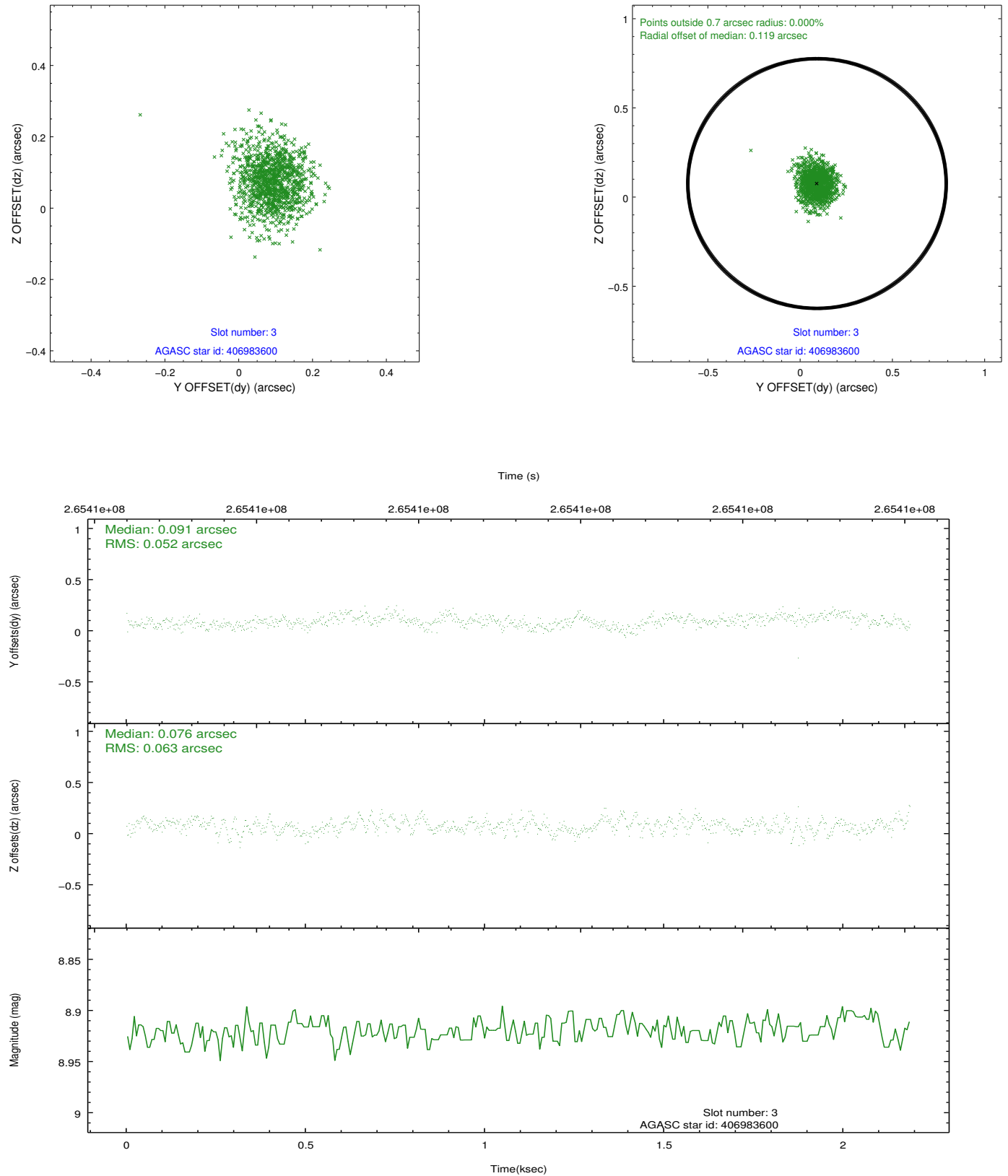


Slot Statistics

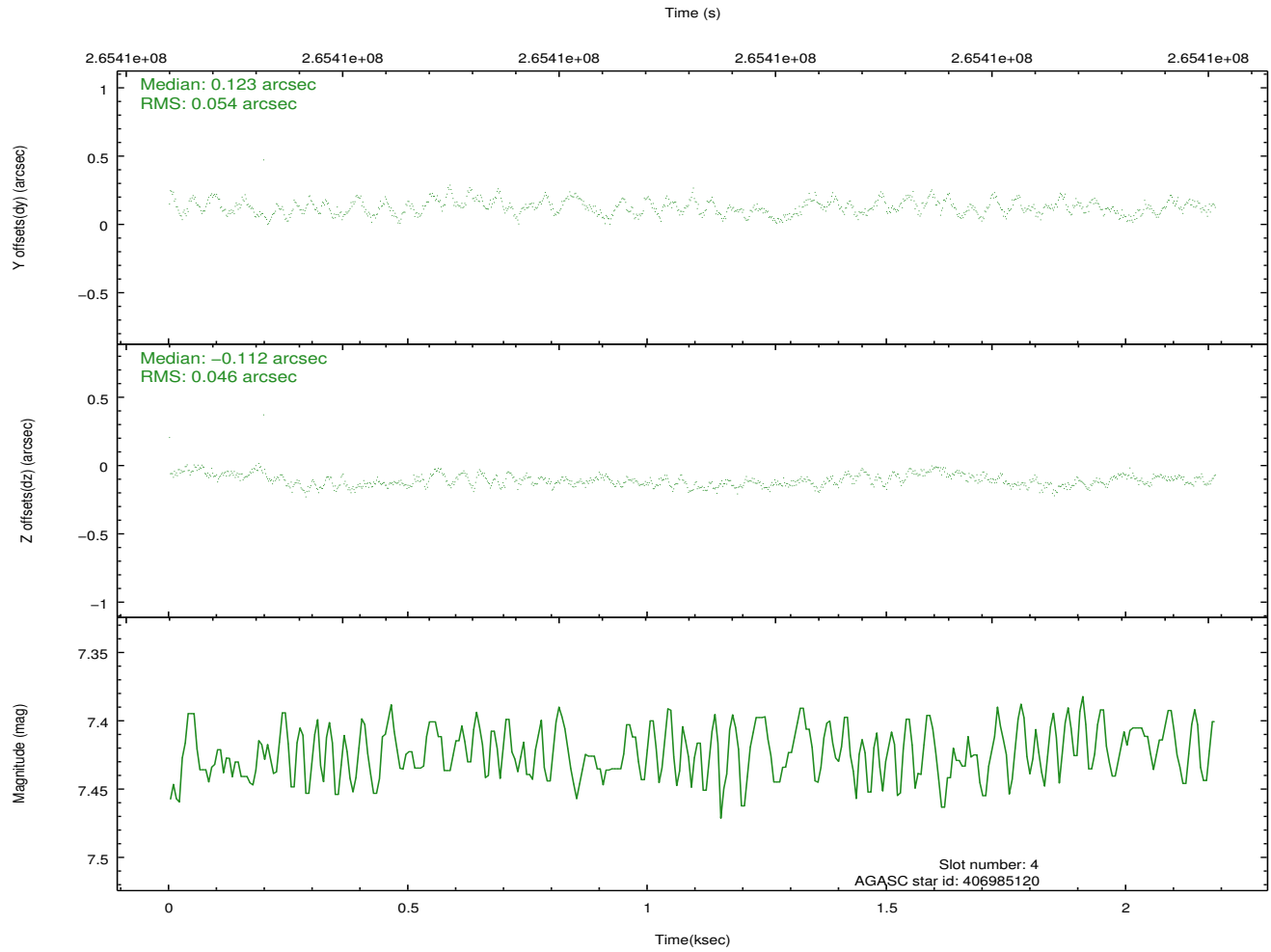
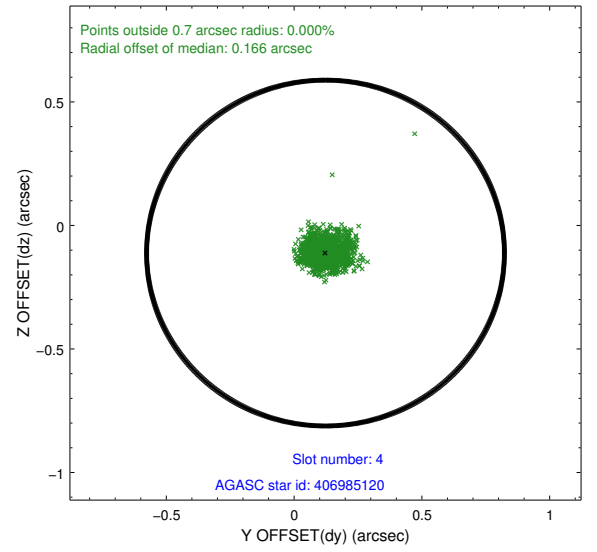
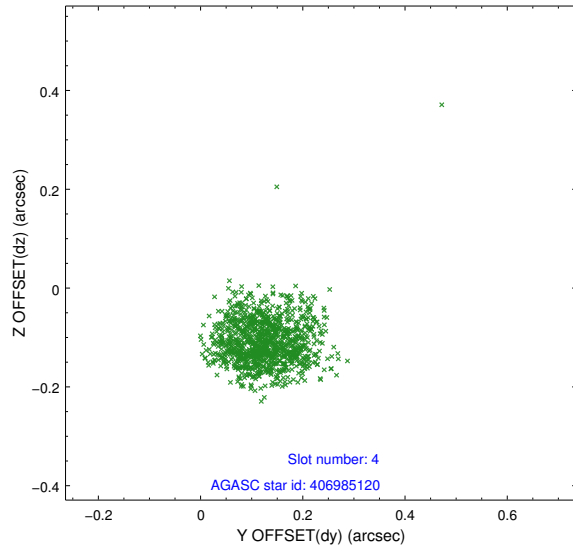
| slot | status | id | mag | n_pts | med_dy | med_dz | dr1 | dr2 | ra | dec | mean_y | mean_z |
|------|--------|-----------|------|-------|--------|--------|-------|-------|------------|-----------|----------|----------|
| 0 | FID | HRC-S-1 | 7.00 | 533 | 0.111 | -0.160 | 0.009 | 0.015 | 0.000000 | 0.000000 | -1162.46 | -457.36 |
| 1 | FID | HRC-S-3 | 7.01 | 533 | 0.025 | -0.045 | 0.010 | 0.017 | 0.000000 | 0.000000 | -1167.41 | 571.42 |
| 2 | FID | HRC-S-4 | 6.96 | 534 | 0.251 | -0.092 | 0.005 | 0.010 | 0.000000 | 0.000000 | 1233.76 | 575.78 |
| 3 | GUIDE | 406983600 | 8.92 | 1065 | 0.091 | 0.076 | 0.085 | 0.141 | 279.940957 | 39.020708 | -1150.40 | -1718.81 |
| 4 | GUIDE | 406985120 | 7.42 | 1067 | 0.123 | -0.112 | 0.073 | 0.115 | 278.839732 | 38.894839 | 1221.34 | 299.72 |
| 5 | GUIDE | 406990192 | 9.00 | 1064 | -0.049 | 0.064 | 0.086 | 0.137 | 278.510952 | 38.533654 | 1328.31 | 1893.26 |
| 6 | GUIDE | 406987272 | 6.94 | 1067 | -0.179 | -0.273 | 0.070 | 0.112 | 278.536588 | 38.437504 | 1086.04 | 2151.50 |
| 7 | GUIDE | 406979352 | 9.25 | 1060 | 0.013 | 0.231 | 0.114 | 0.182 | 279.968297 | 39.230258 | -809.33 | -2393.69 |

2.4 Star Slots

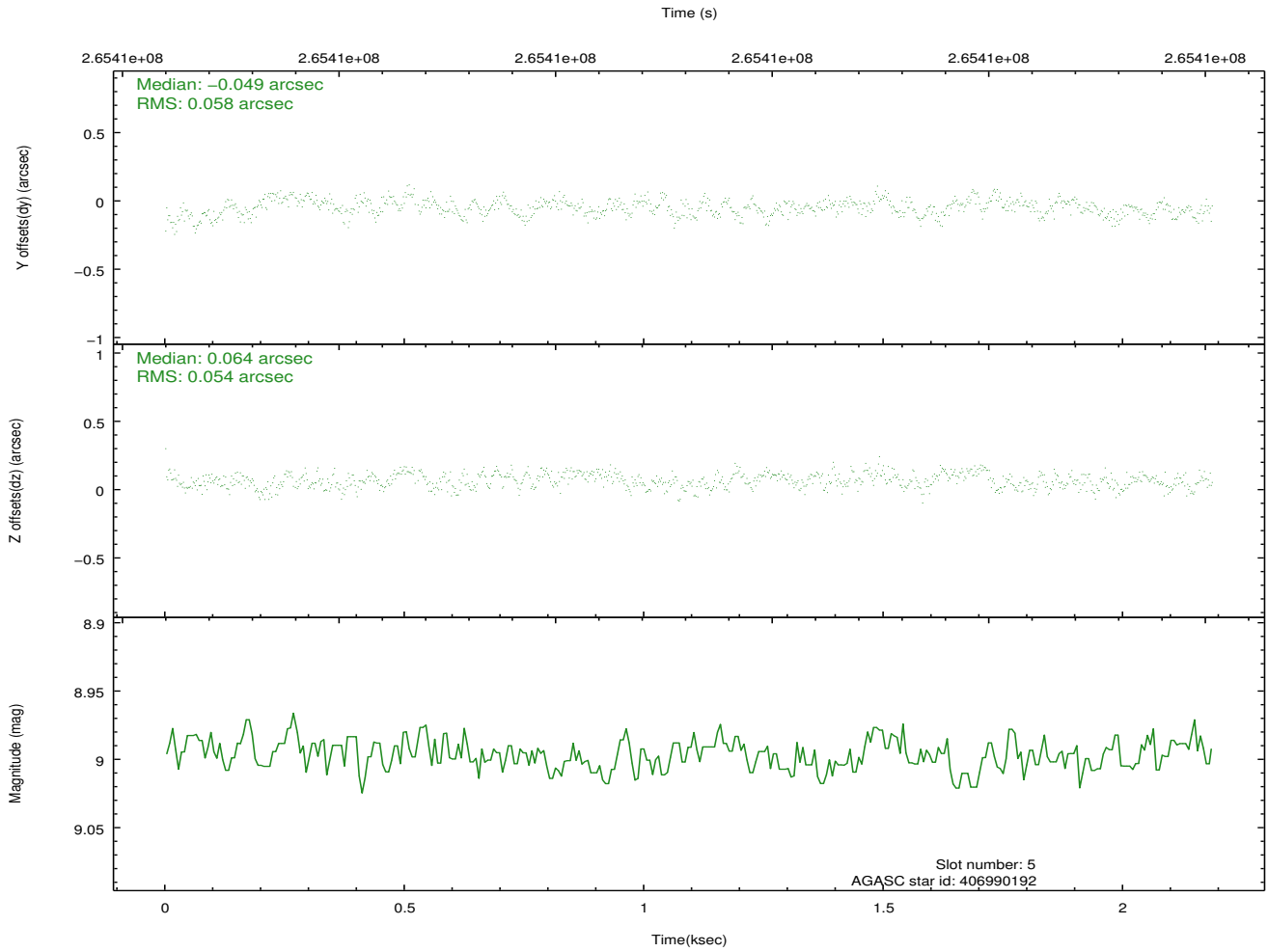
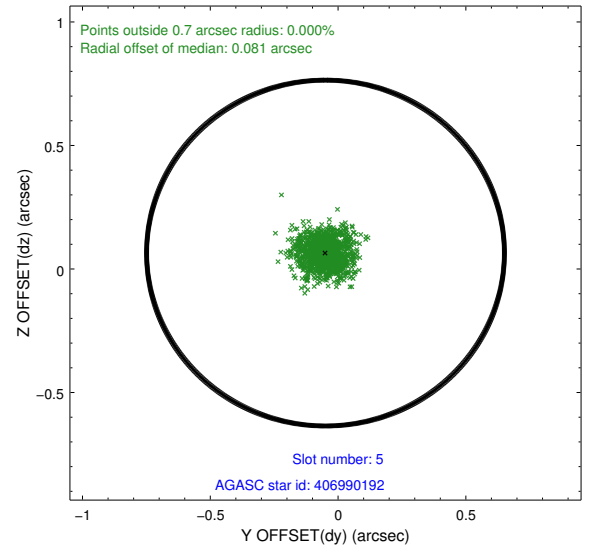
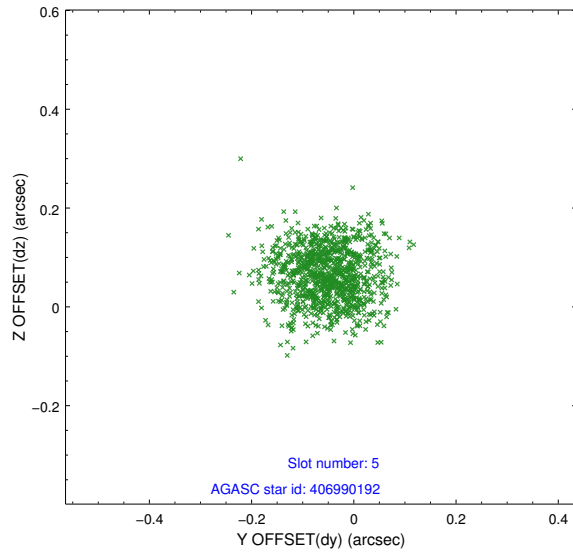
2.4.1 Slot 3



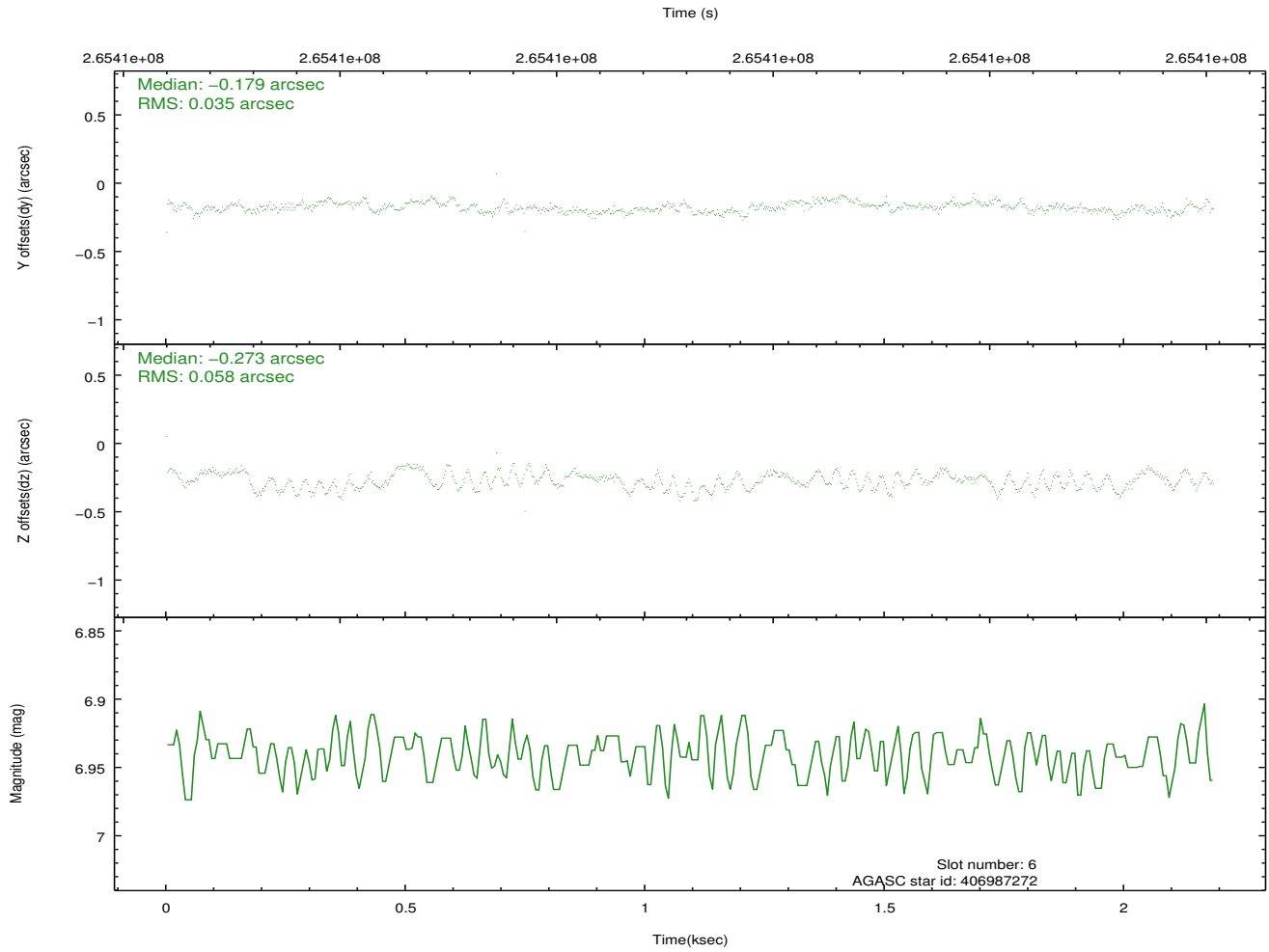
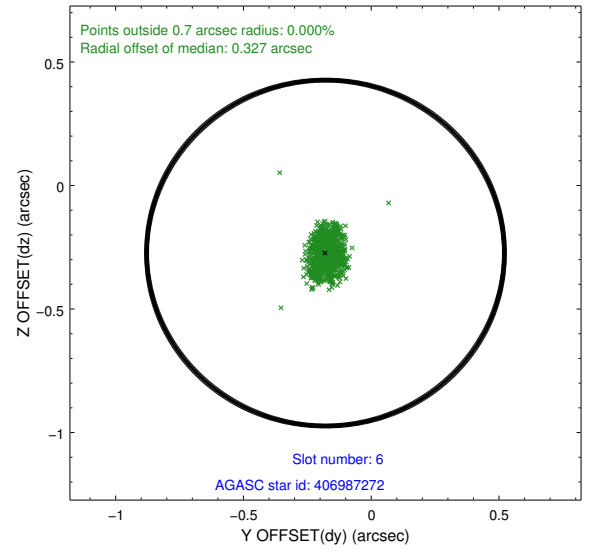
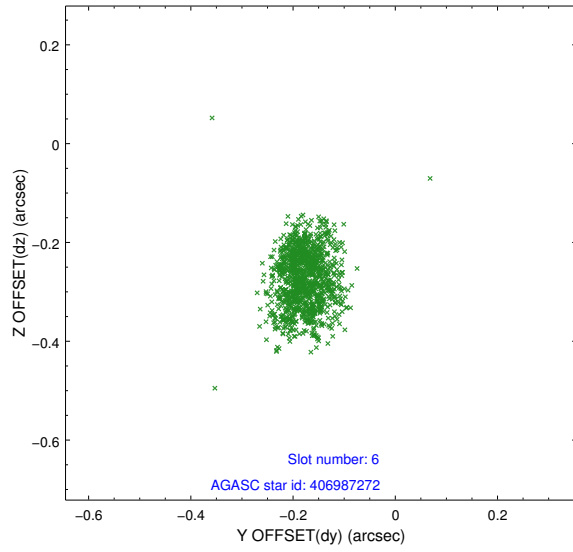
2.4.2 Slot 4



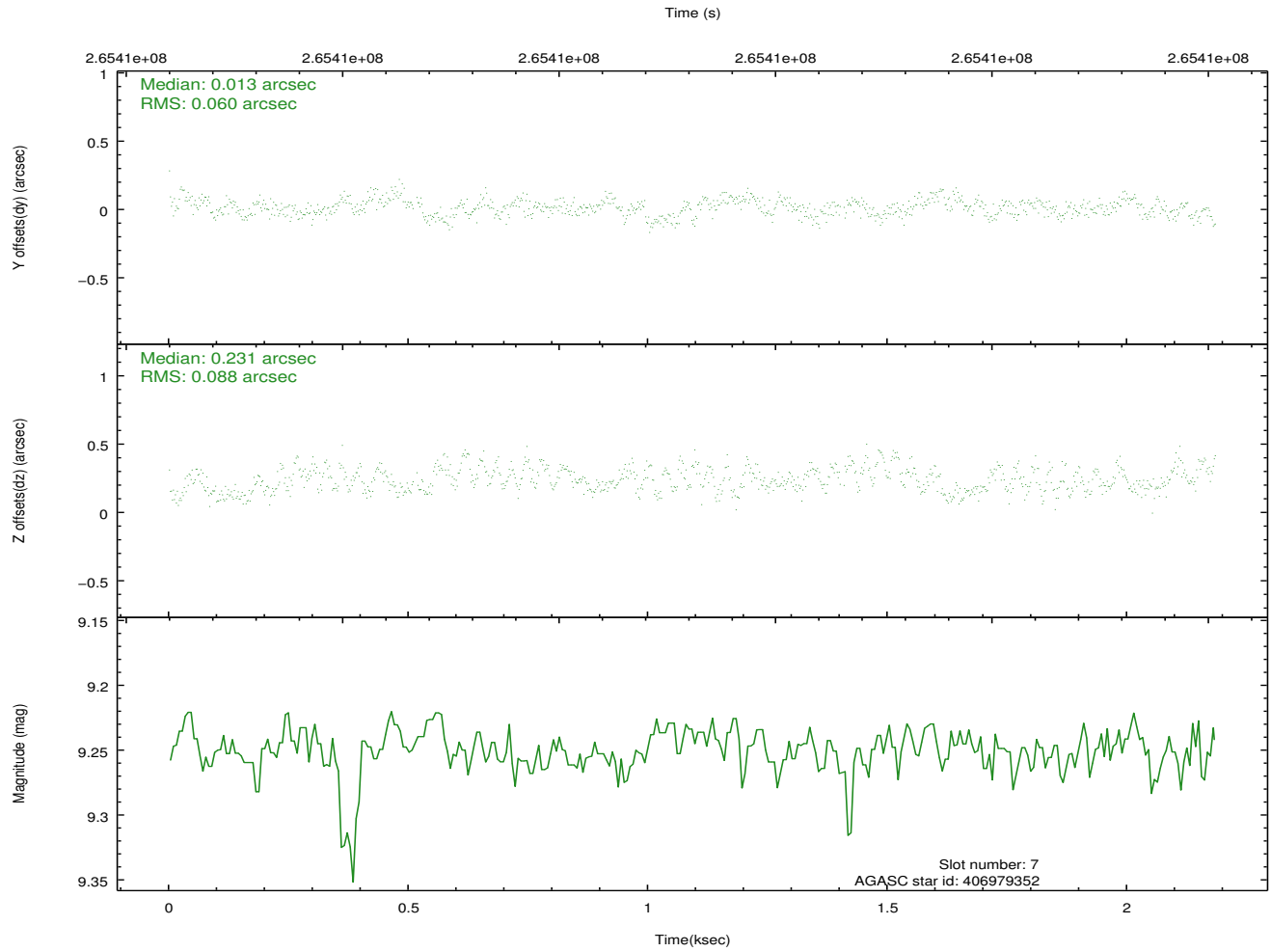
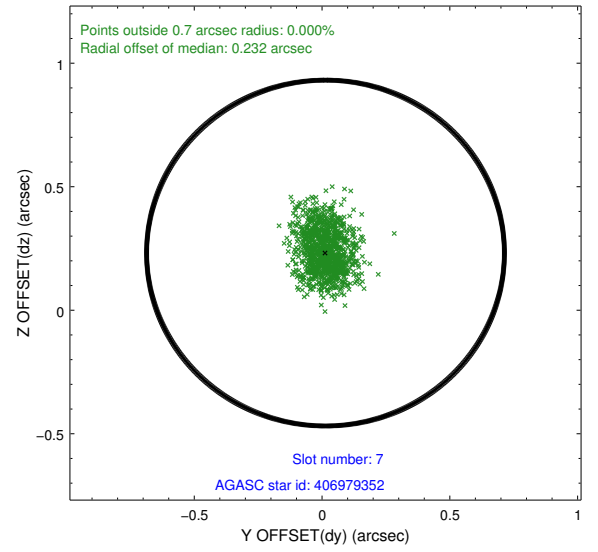
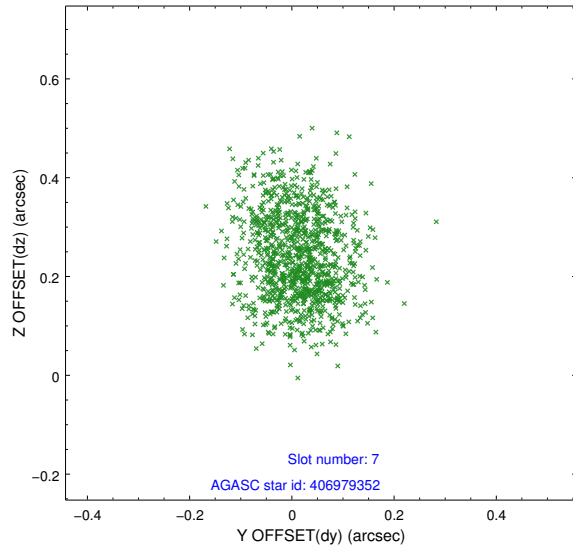
2.4.3 Slot 5



2.4.4 Slot 6

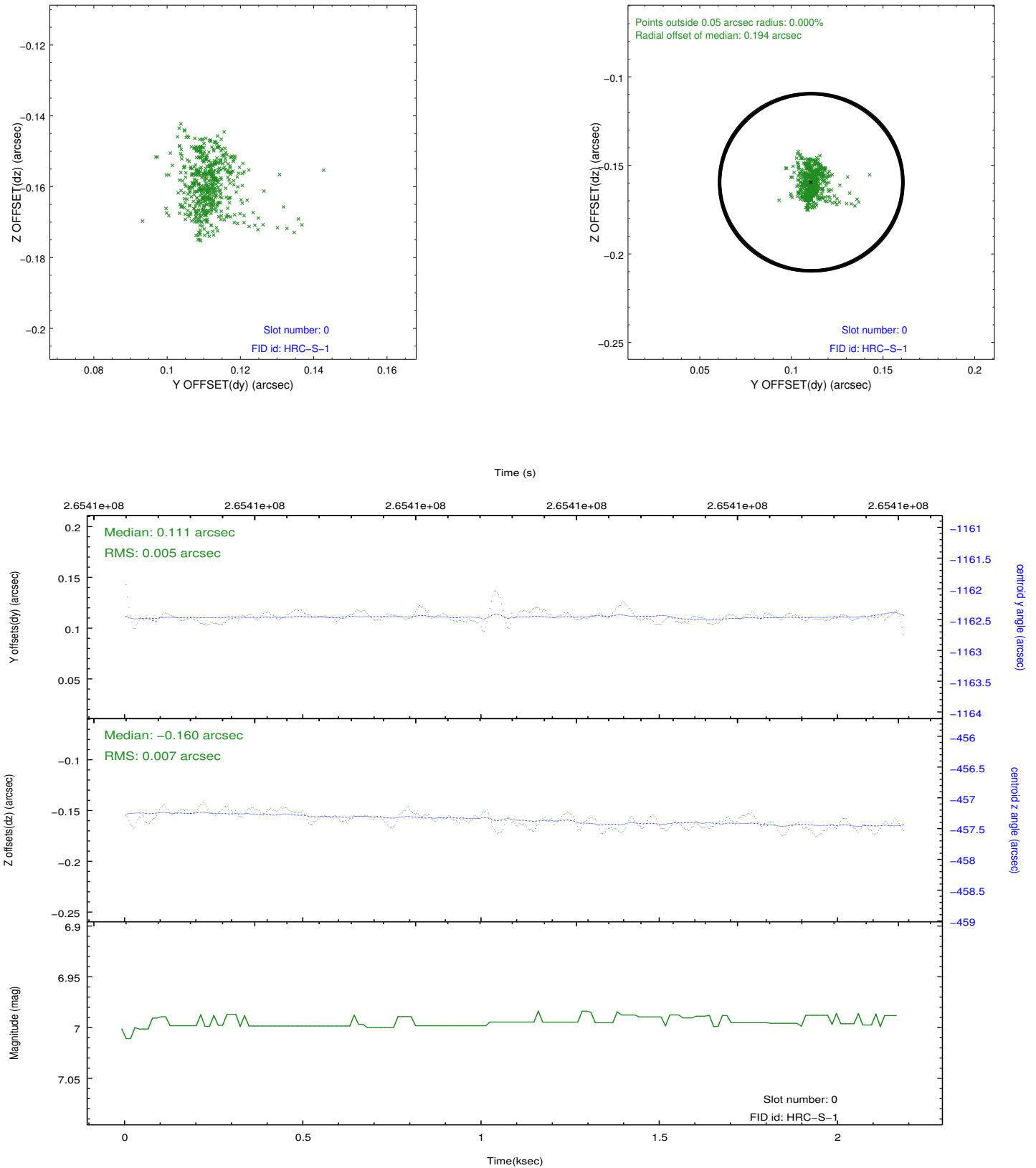


2.4.5 Slot 7

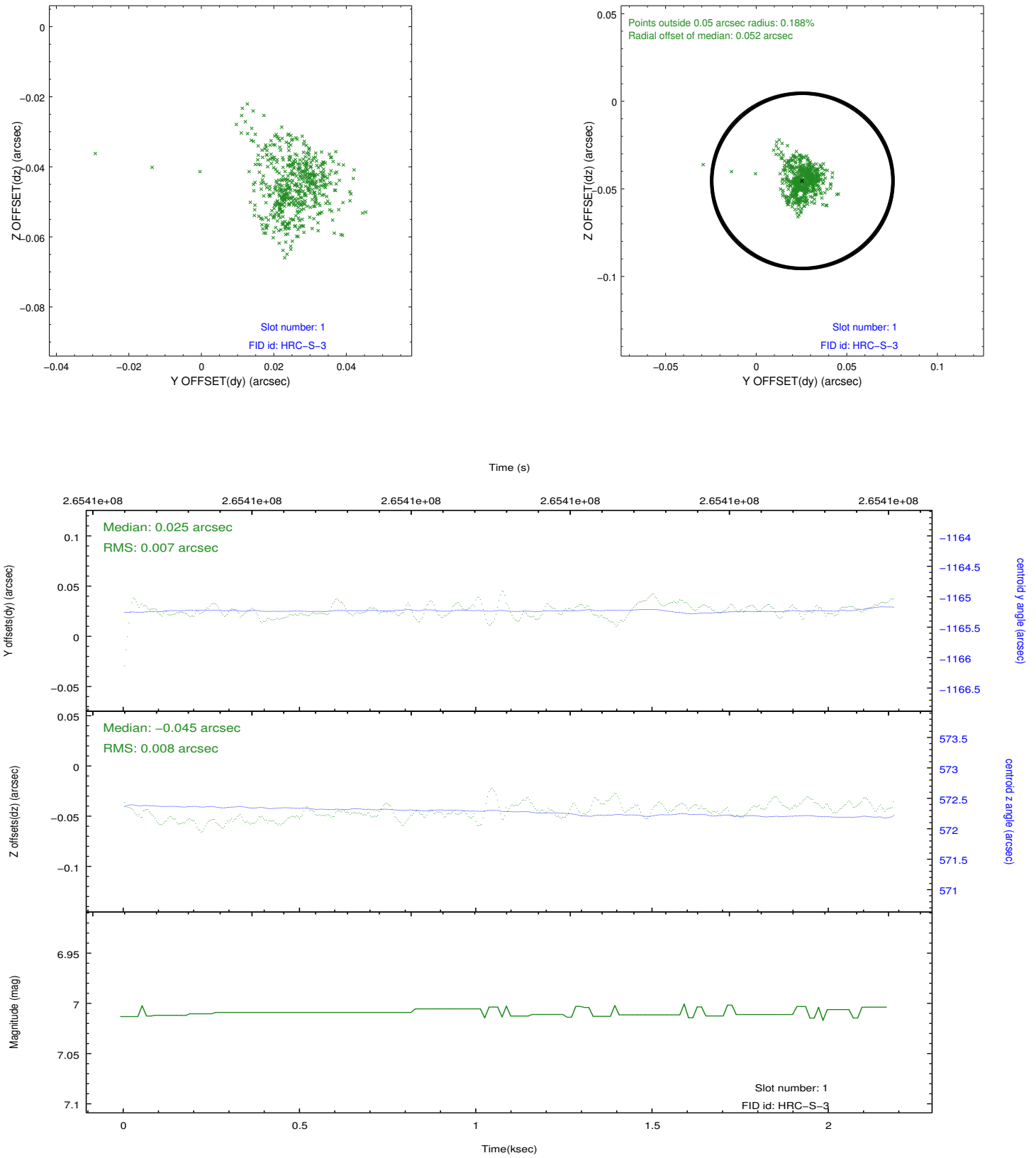


2.5 FID Slots

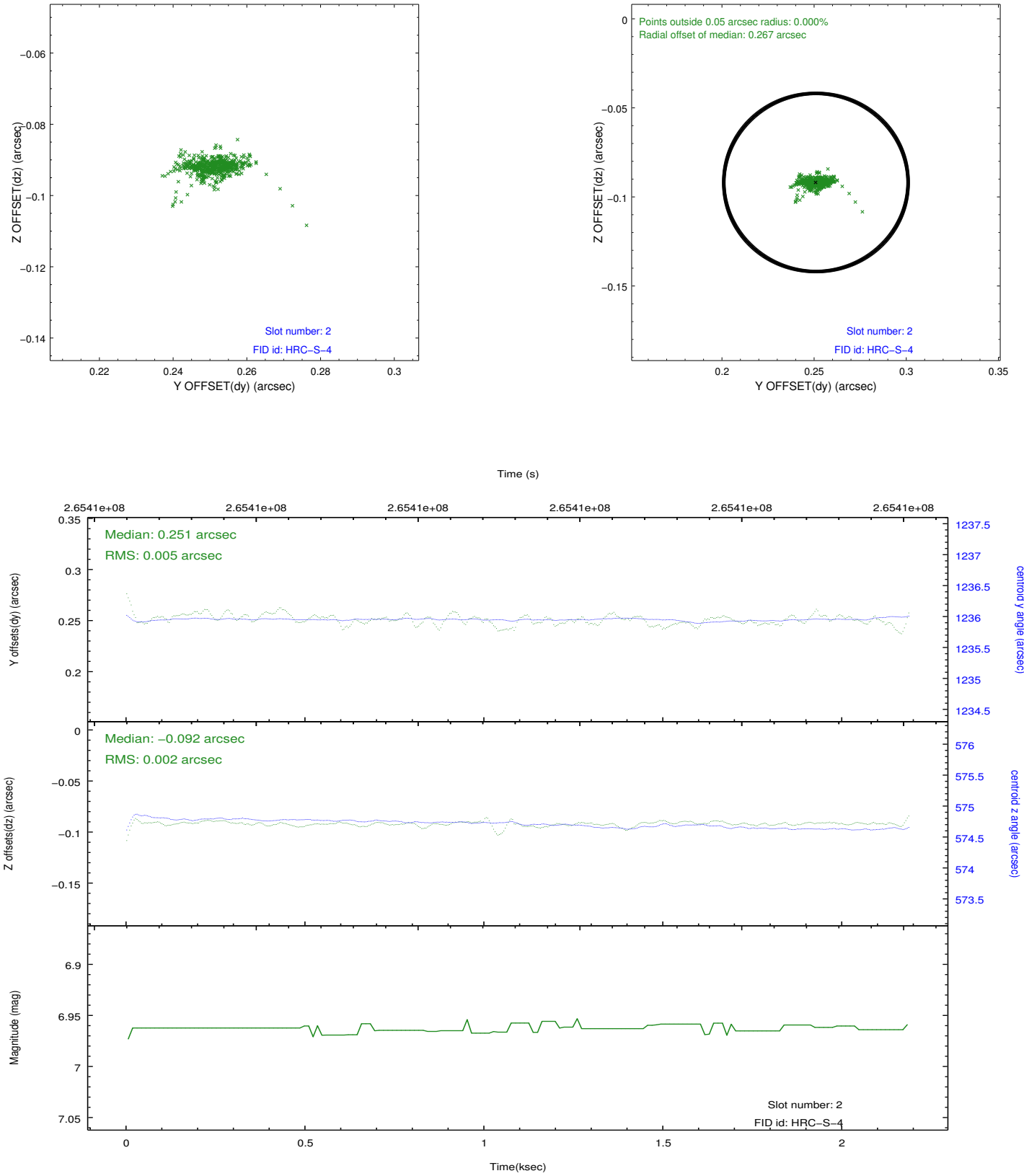
2.5.1 Slot 0



2.5.2 Slot 1



2.5.3 Slot 2



A Summary

A.1 Status

| | |
|----------------------------|------------|
| V&V Scientist | Jen Lauer |
| V&V Date (YYYY-MM-DD) | 2012.08.13 |
| V&V Edition | 1 |
| V&V Disposition and Status | OK |
| V&V Charge Time | 2.15173135 |

A.2 Comments

Window constraint met.