

V&V Reference Report

L2 ASCDS Version : 8.4.3.1

Observation 6431 - L2 Version 2
Chandra X-Ray Center

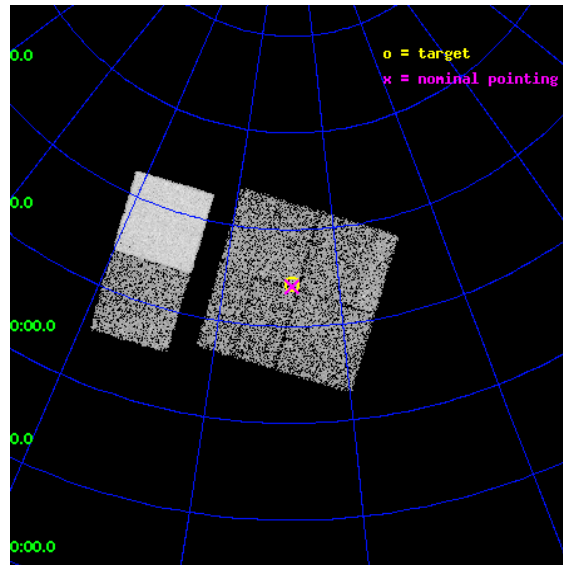
L2 Processing Date : Mar 25 2012

Contents

1	Front	2
2	OBI	3
2.1	OBI	3
2.1.1	Images	3
2.1.2	Bias	3
2.1.3	Parameters	4
2.1.4	Events	4
2.2	Compared Parameters	5
2.3	Aspect	6
2.4	Star Slots	9
2.4.1	Slot 3	9
2.4.2	Slot 4	10
2.4.3	Slot 5	11
2.4.4	Slot 6	12
2.4.5	Slot 7	13
2.5	FID Slots	14
2.5.1	Slot 0	14
2.5.2	Slot 1	15
2.5.3	Slot 2	16
A	Summary	17
A.1	Status	17
A.2	Comments	17

1 Front

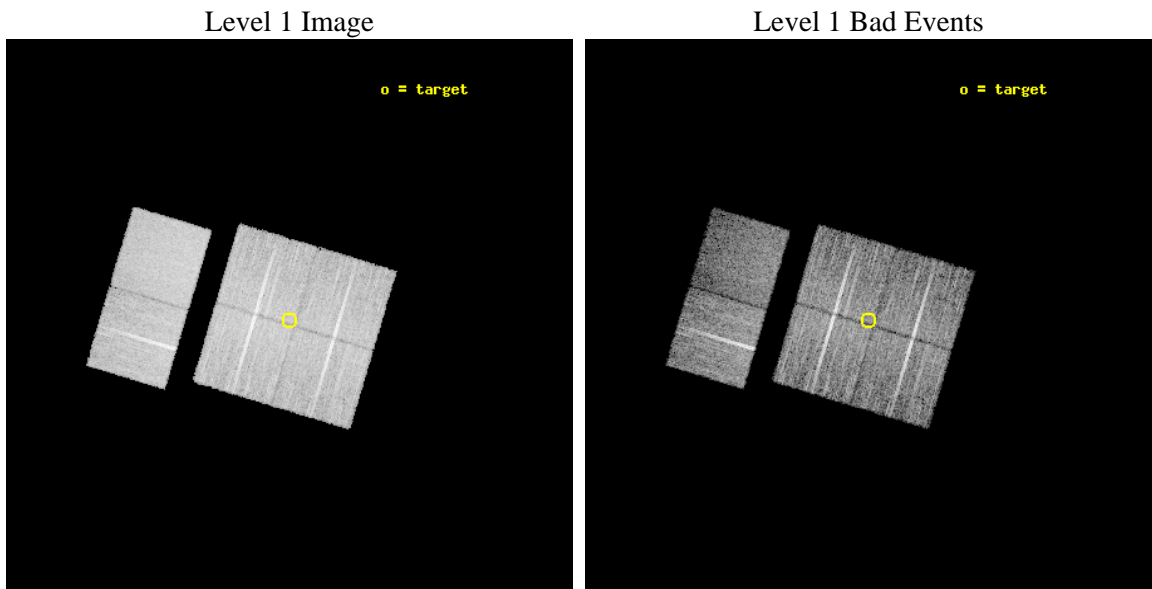
seq_num	200405	Sequence number
obs_id	6431	Observation id
title	Polaris: High Mass Star Formation	Proposal title
observer	Dr. Nancy Evans	Principal investigator
object	Polaris	Source name
dtcycle	0	
cycle	P	events from which exps? Prim/Second/Both
ra_targ	36.195833	Observer's specified target RA [deg]
dec_targ	89.239722	Observer's specified target Dec [deg]
ra_nom	36.161411281534	Nominal RA [deg]
dec_nom	89.235115870831	Nominal Dec [deg]
roll_nom	286.72372115976	Nominal Roll [deg]
revision	2	Processing version of data
ontime	9954.4189418852	Sum of GTIs [s]
livetime	9828.3700954116	Livetime [s]
ontime0	9951.0548416078	Sum of GTIs [s]
ontime1	9954.3368618786	Sum of GTIs [s]
ontime2	9947.8959212899	Sum of GTIs [s]
ontime3	9954.4189418852	Sum of GTIs [s]
ontime6	9954.5010218918	Sum of GTIs [s]
ontime7	9954.4599818885	Sum of GTIs [s]
l2events	62751	Number of level 2 events



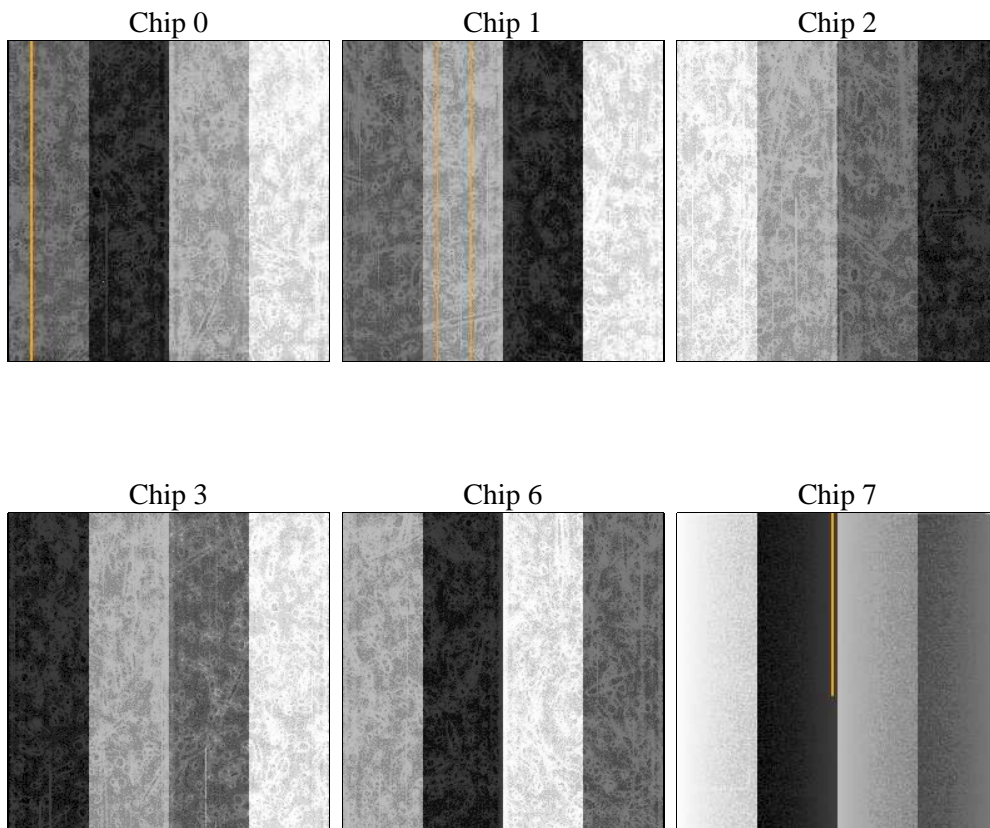
2 OBI

2.1 OBI

2.1.1 Images



2.1.2 Bias



2.1.3 Parameters

obi_num	1	Obi number	sched_exp_time	10000.000000	[s] Scheduled observation exposure time
ascdsver	8.4.3	Processing system revision	ontime	9954.4189418852	Sum of GTIs [s]
caldsver	4.4.8	 	ontime0	9951.0548416078	Sum of GTIs [s]
date	2012-03-25T02:04:51	Date and time of file creation	ontime1	9954.3368618786	Sum of GTIs [s]
revision	2	Processing version of data	ontime2	9947.8959212899	Sum of GTIs [s]
			ontime3	9954.4189418852	Sum of GTIs [s]
			ontime6	9954.5010218918	Sum of GTIs [s]
			ontime7	9954.4599818885	Sum of GTIs [s]
			l1events	423363	Number of level 1 events

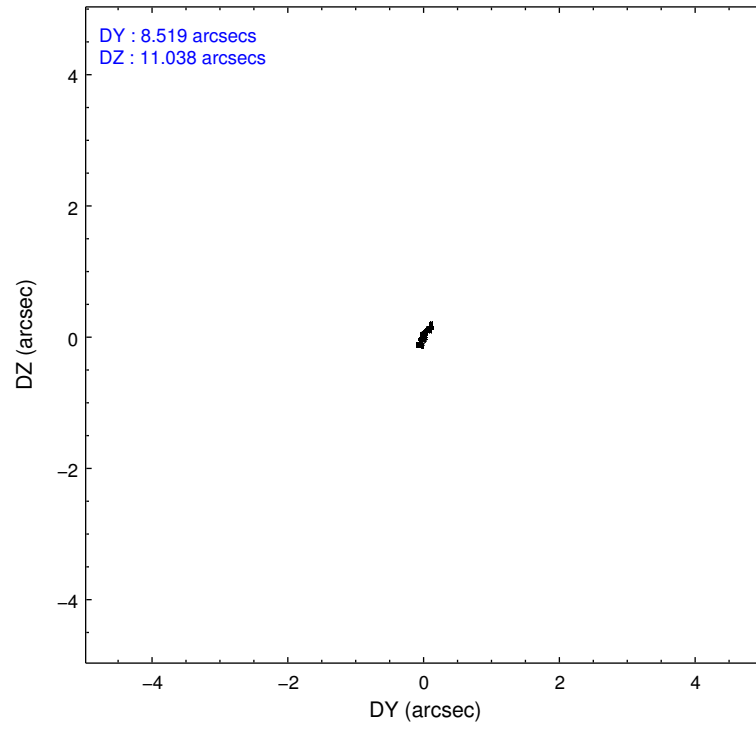
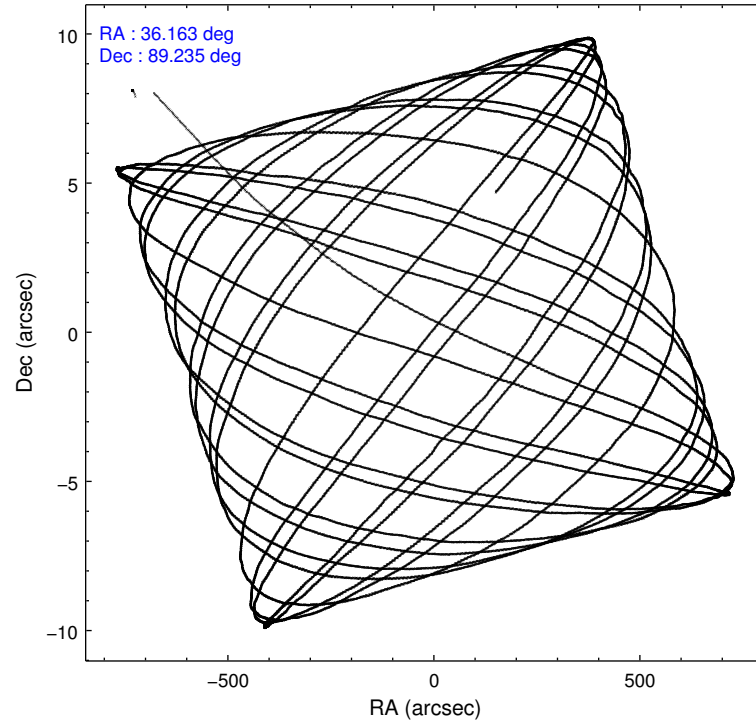
2.1.4 Events

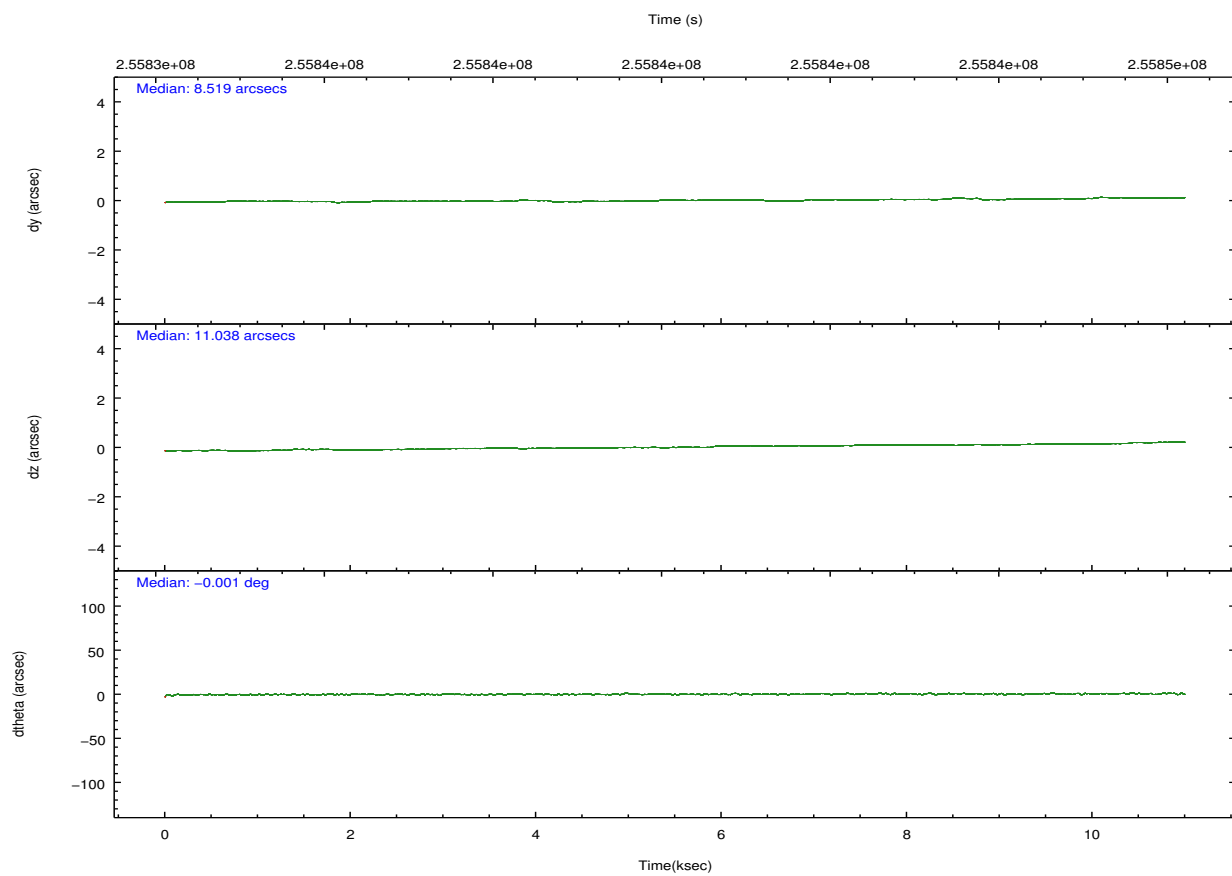
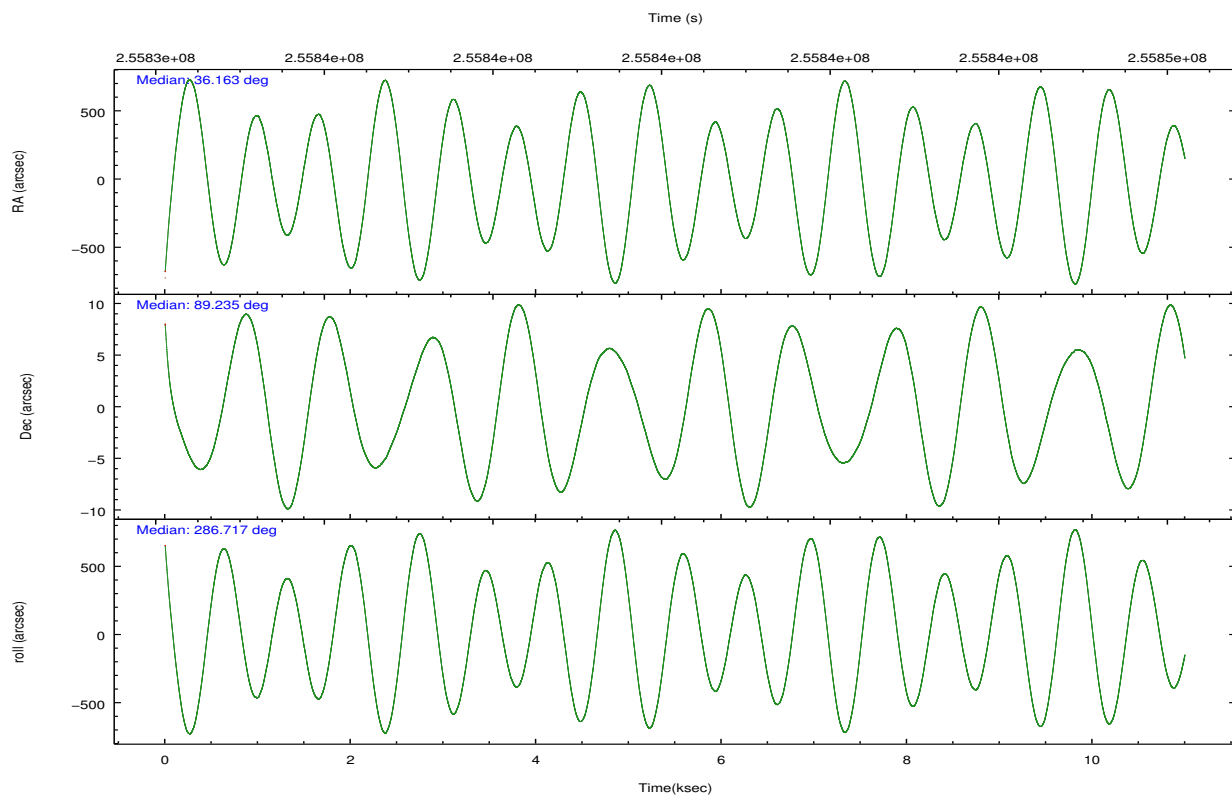
	ccd 0	ccd 1	ccd 2	ccd 3	ccd 6	ccd 7		ccd 0	ccd 1	ccd 2	ccd 3	ccd 6	ccd 7
level 1 events	64580	64775	75288	69706	71707	77307	grade 0 events	2297	2744	2436	2263	2421	2948
rejected events	57798	57211	68576	63268	64632	42305		3%	4%	3%	3%	3%	3%
rejected %	89%	88%	91%	90%	90%	54%	grade 1 events	24	39	36	26	37	75
								0%	0%	0%	0%	0%	0%
							grade 2 events	1635	1650	1586	1433	1521	7031
								2%	2%	2%	2%	2%	9%
							grade 3 events	815	814	707	787	825	3307
								1%	1%	0%	1%	1%	4%
							grade 4 events	705	841	765	707	767	3278
								1%	1%	1%	1%	1%	4%
							grade 5 events	2374	2624	2276	2702	2812	8100
								3%	4%	3%	3%	3%	10%
							grade 6 events	1335	1519	1227	1253	1545	18462
								2%	2%	1%	1%	2%	23%
							grade 7 events	55395	54544	66255	60535	61779	34106
								85%	84%	88%	86%	86%	44%

2.2 Compared Parameters

Parameter	Planned	Actual	Parameter	Planned	Actual
Instrument	ACIS	ACIS	Obspar format version number	7	7
Detector	ACIS-012367	ACIS-012367	Obspar file type	PREDICTED	ACTUAL
Grating	NONE	NONE	Obspar update status	NONE	UPDATED
Data mode	VFAINT	VFAINT	Number of optional ACIS chips dropped	0	0
Observation mode	POINTING	POINTING	On-chip summing requested	N	N
[deg] Pointing RA	34.621268	36.16141128153363	Subarray requested	NONE	NONE
[deg] Pointing Dec	89.253322	89.23511587083149	Alternating exposures requested	N	N
[deg] Pointing Roll	288.055065	286.7237211597634	[s] Primary exposure time	0.000000	3.2
[mm] SIM focus pos	-0.782348	-0.7809083437167272			
[mm] SIM defocus	0	0.001439871863259334			
[mm] SIM translation stage pos	-233.592463	-233.5874344608287			
[mm] SIM translation stage offset	0	-0.005018542100998502			
[s] Observation start time (MET)	255835660.184000	255834147.65984			
Observation start date	2006-02-09T01:26:35	2006-02-09T01:02:27			
[s] Observation end time (MET)	255845660.184000	255846327.22291			
Observation end date	2006-02-09T04:13:15	2006-02-09T04:25:27			
Read mode	TIMED	TIMED			

2.3 Aspect



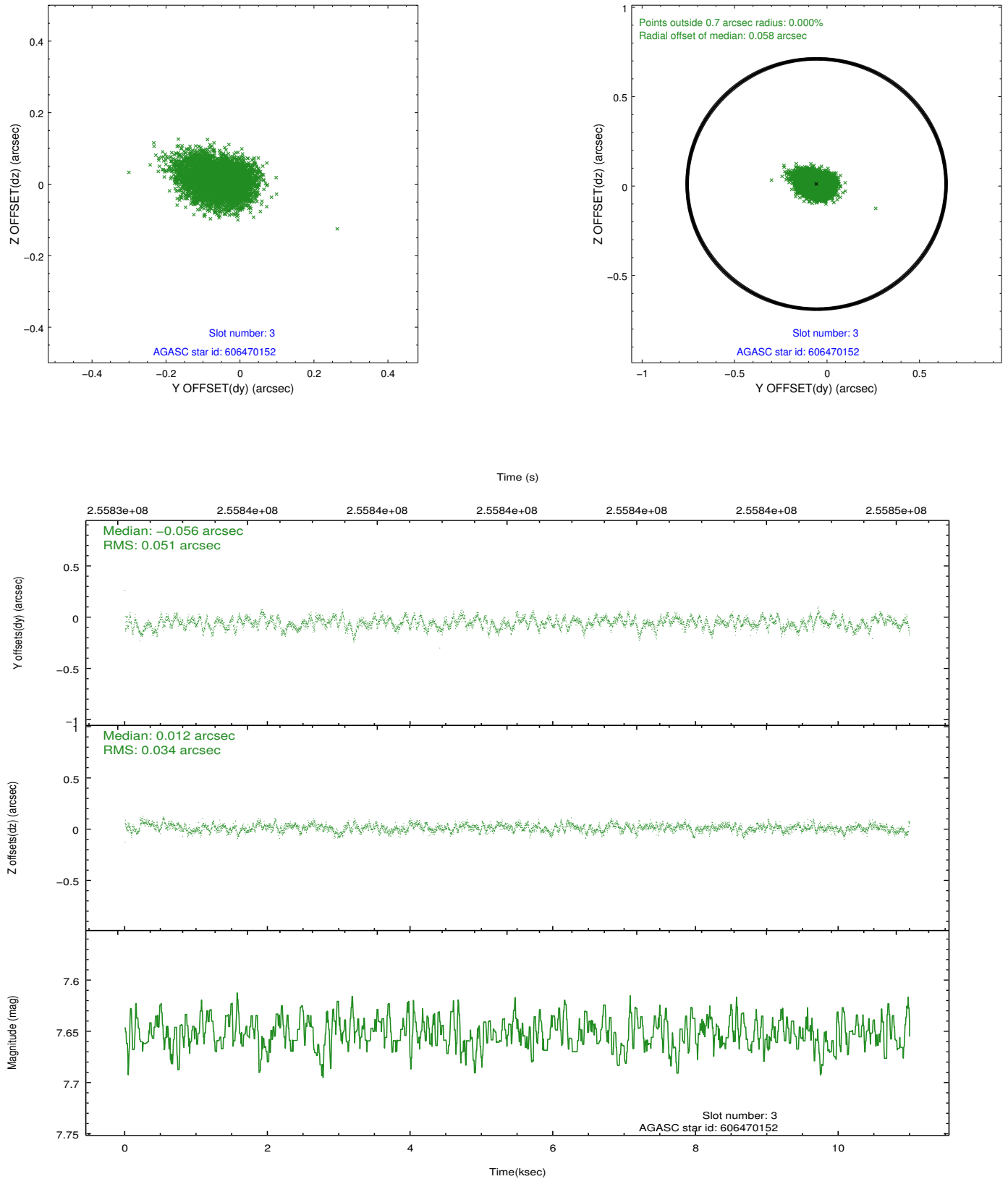


Slot Statistics

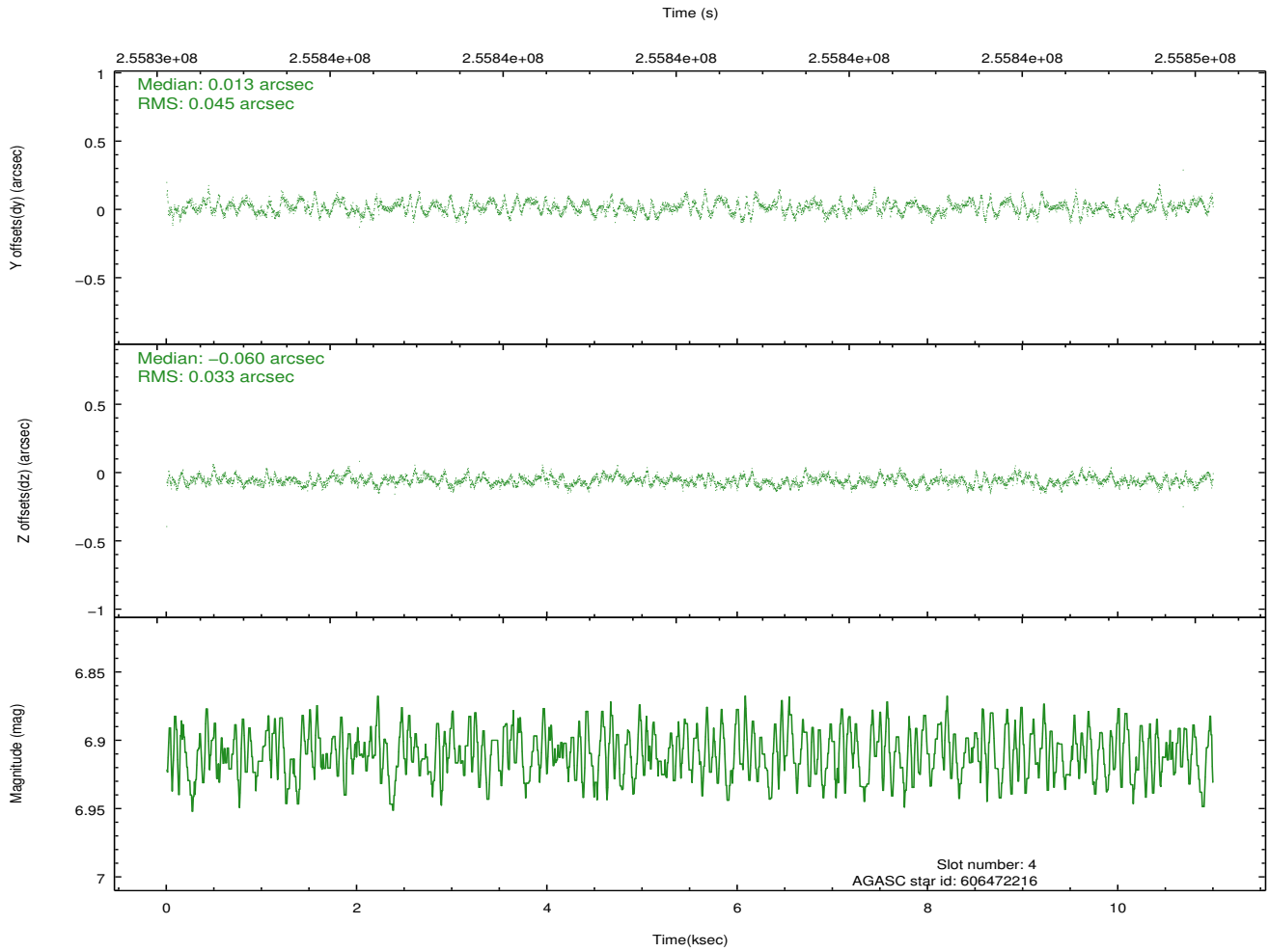
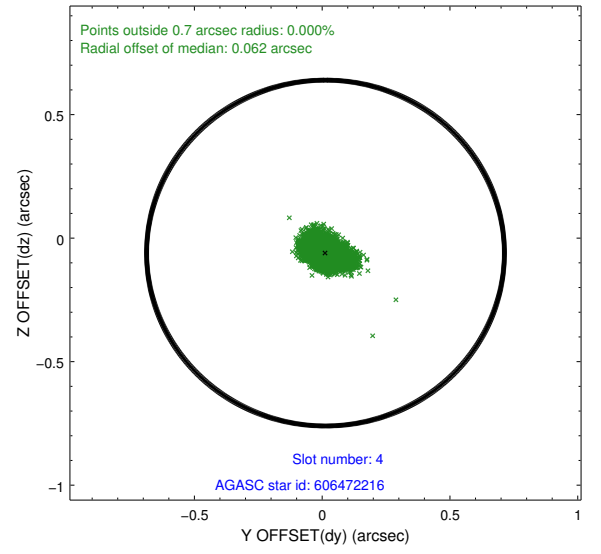
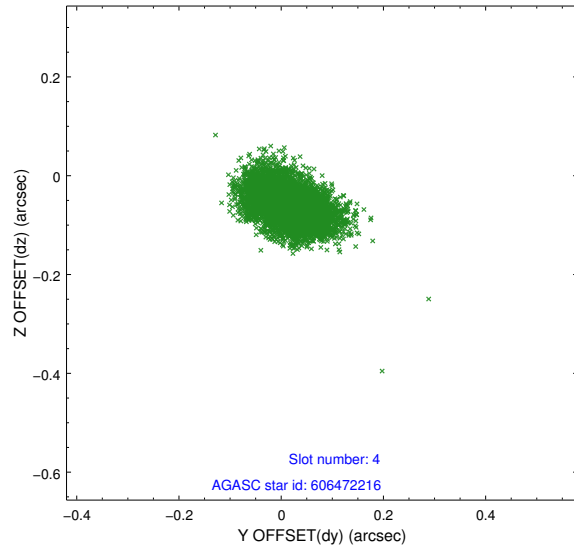
slot	status	id	mag	n_pts	med_dy	med_dz	dr1	dr2	ra	dec	mean_y	mean_z
0	FID	ACIS-I-1	7.25	2682	0.054	-0.035	0.008	0.016	0.000000	0.000000	931.15	-834.60
1	FID	ACIS-I-5	7.23	2683	-0.199	0.058	0.008	0.014	0.000000	0.000000	-1816.92	1062.79
2	FID	ACIS-I-6	7.25	2682	0.054	0.047	0.007	0.011	0.000000	0.000000	396.23	1707.78
3	GUIDE	606470152	7.65	5365	-0.056	0.012	0.064	0.106	28.448779	88.551649	2200.22	-1306.60
4	GUIDE	606472216	6.91	5365	0.013	-0.060	0.059	0.096	23.461288	89.015637	538.99	-896.96
5	GUIDE	606732584	8.57	5365	-0.036	-0.024	0.061	0.099	70.692448	89.630090	-1288.44	1244.38
6	GUIDE	606733120	8.98	5365	0.079	0.075	0.070	0.117	68.071032	88.628840	2204.10	2143.50
7	GUIDE	606732552	9.07	5359	0.002	-0.002	0.072	0.115	75.970846	89.420698	-639.02	1657.77

2.4 Star Slots

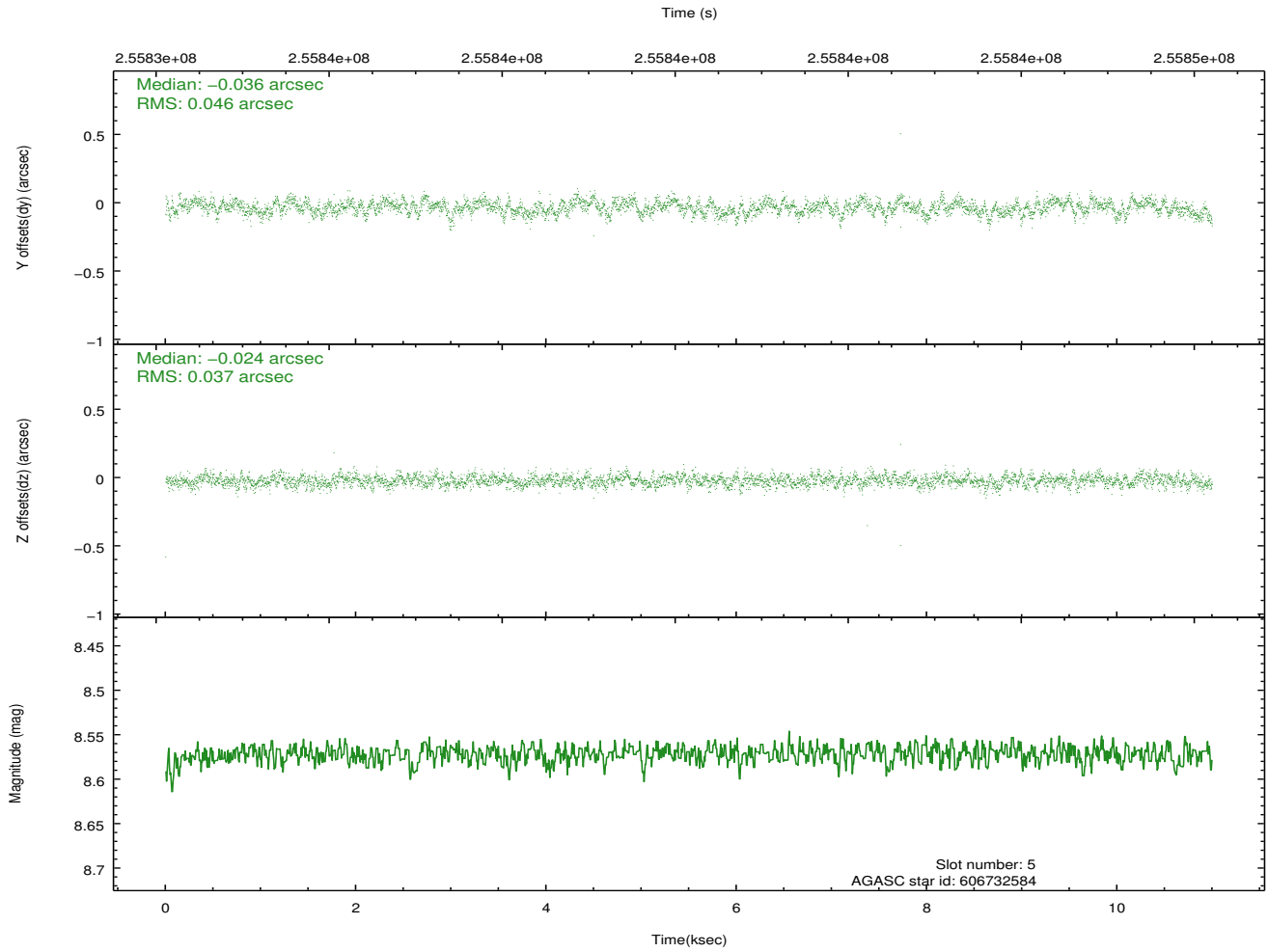
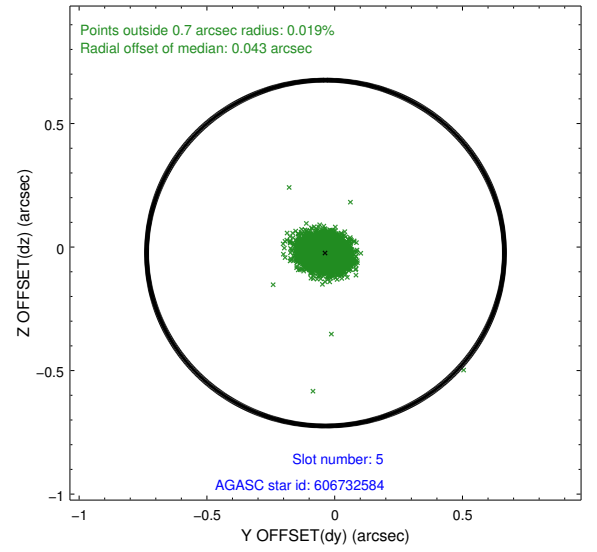
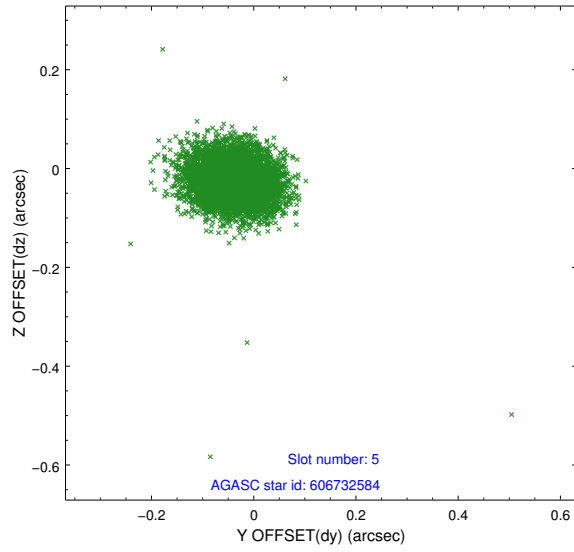
2.4.1 Slot 3



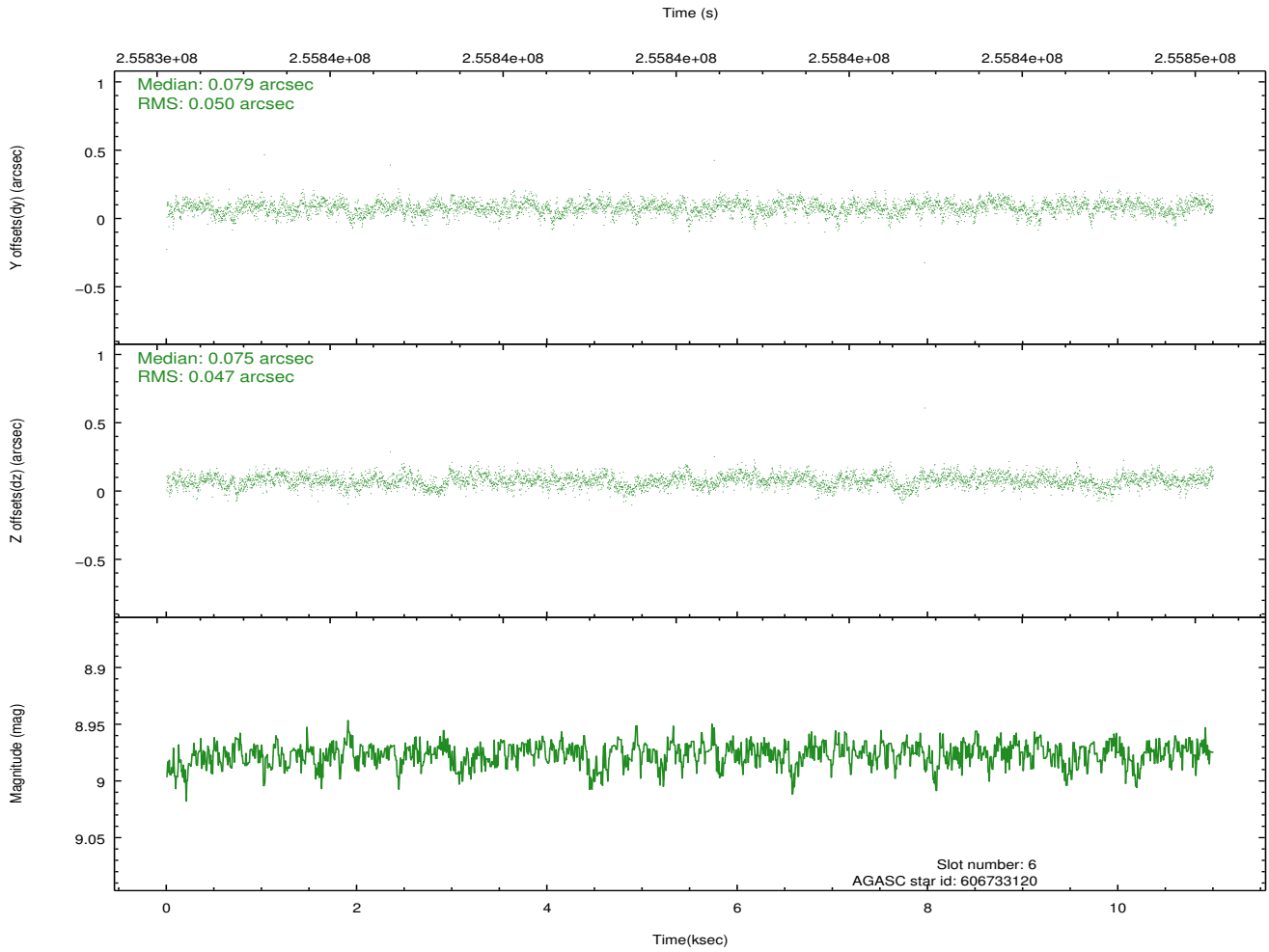
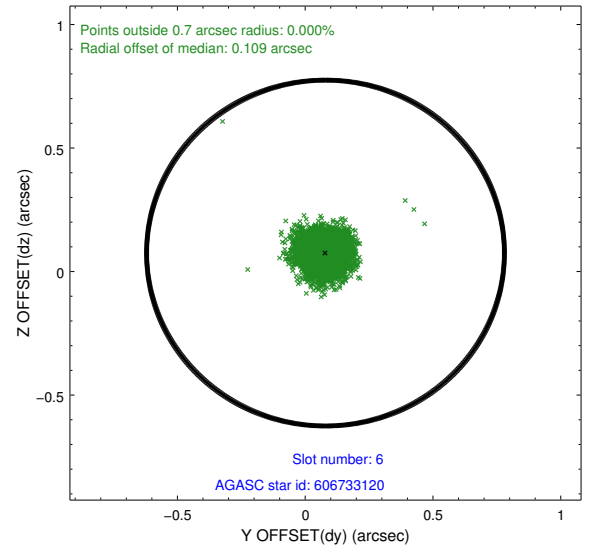
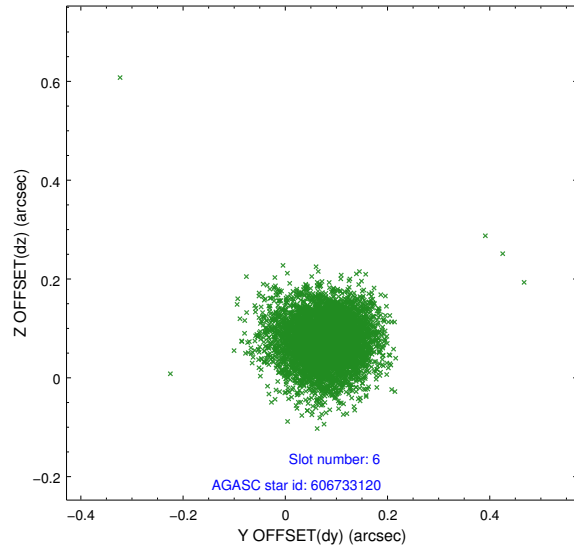
2.4.2 Slot 4



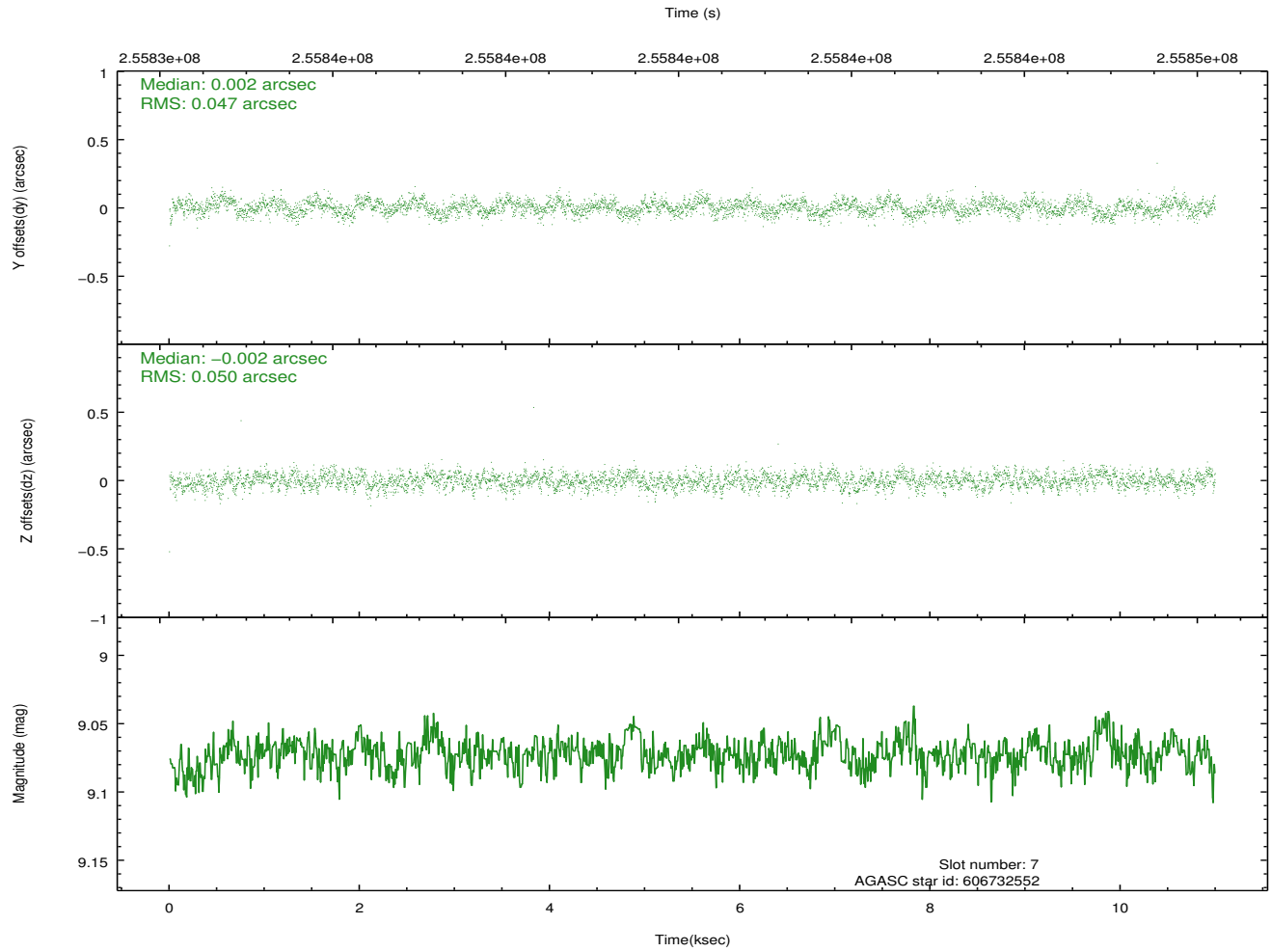
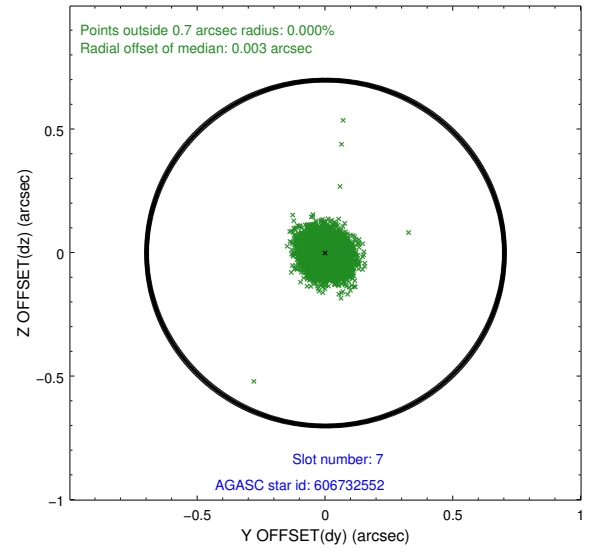
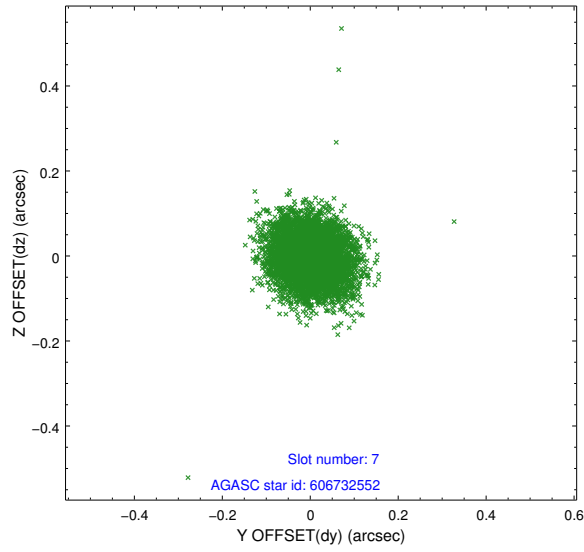
2.4.3 Slot 5



2.4.4 Slot 6

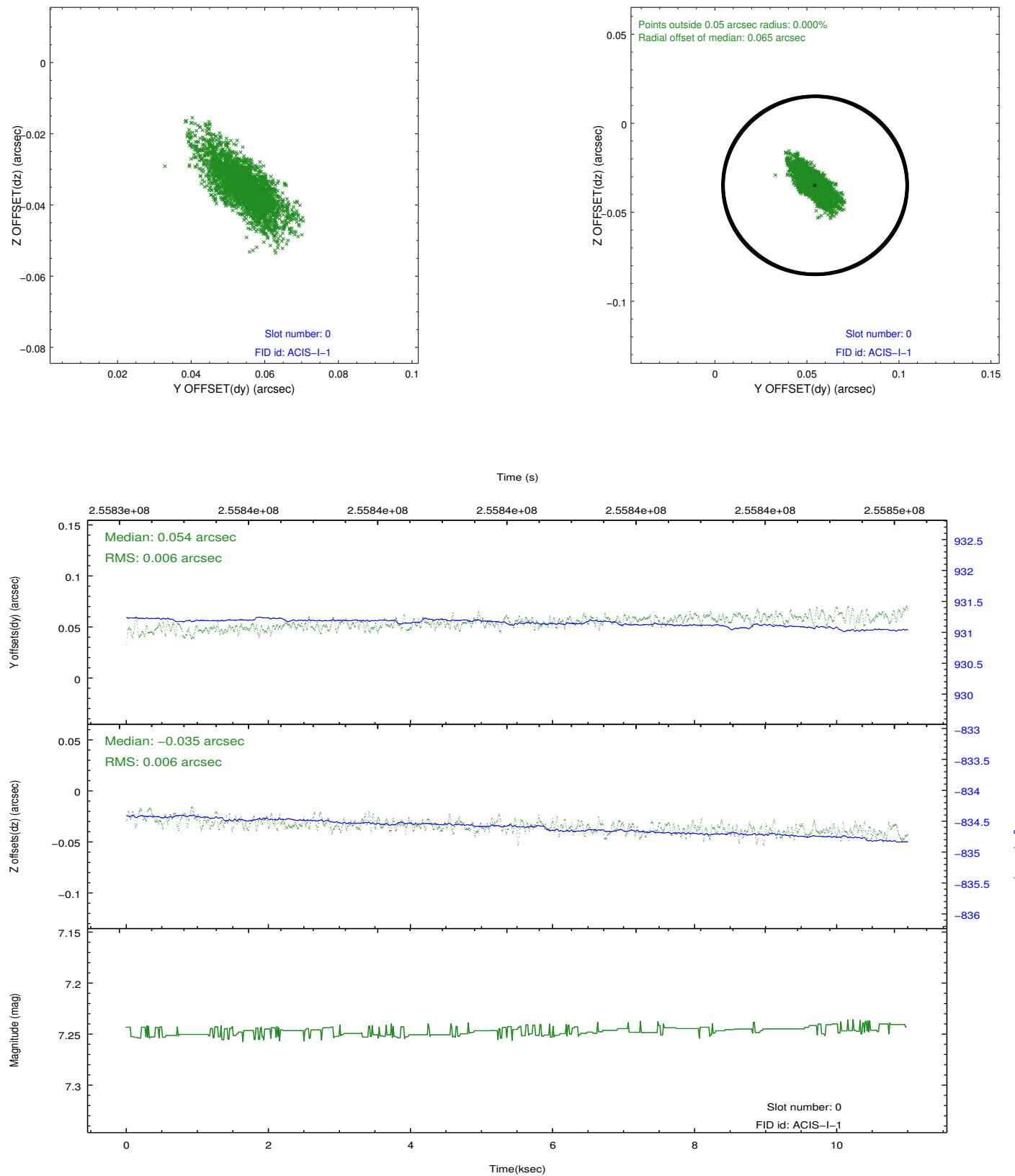


2.4.5 Slot 7

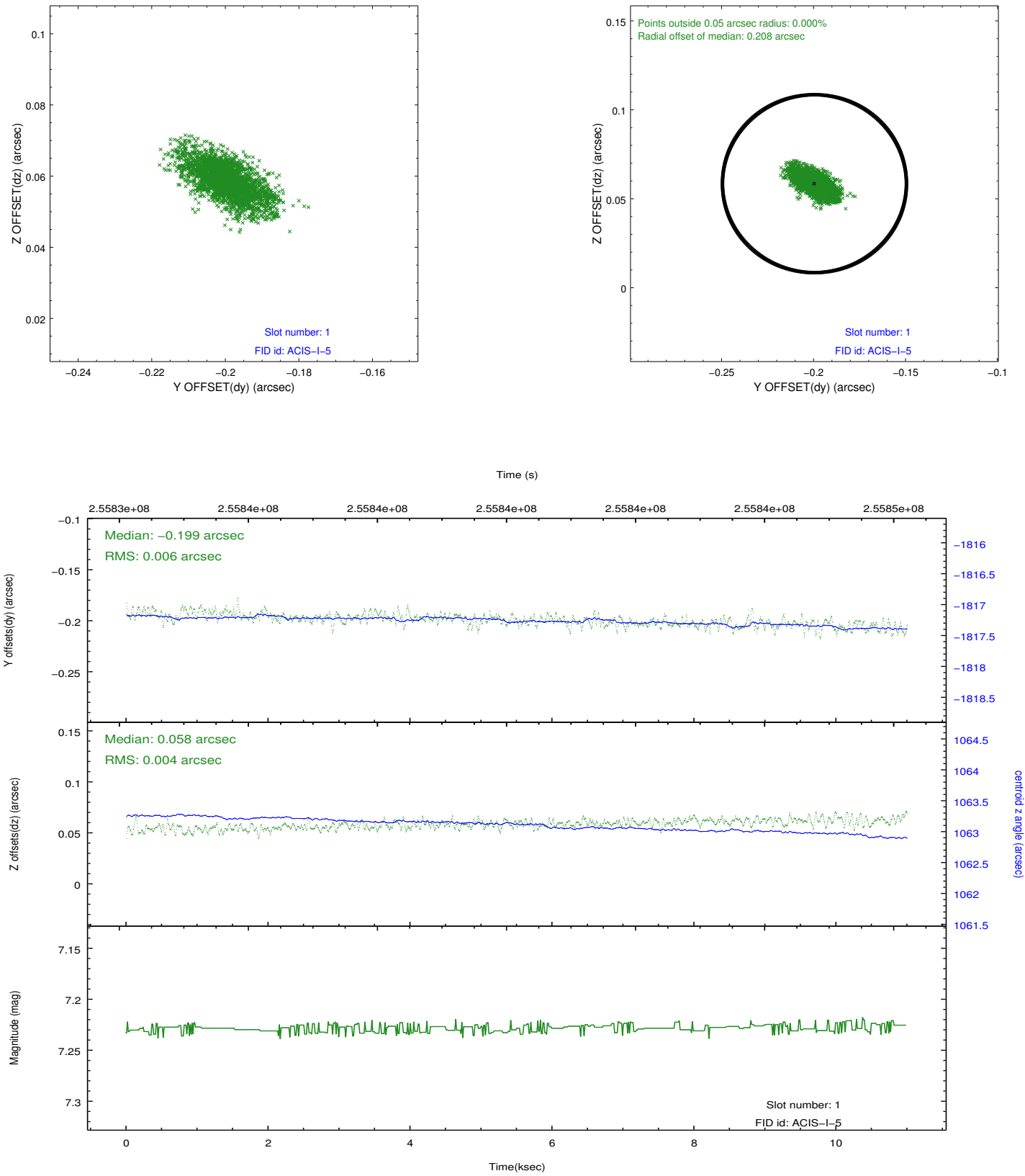


2.5 FID Slots

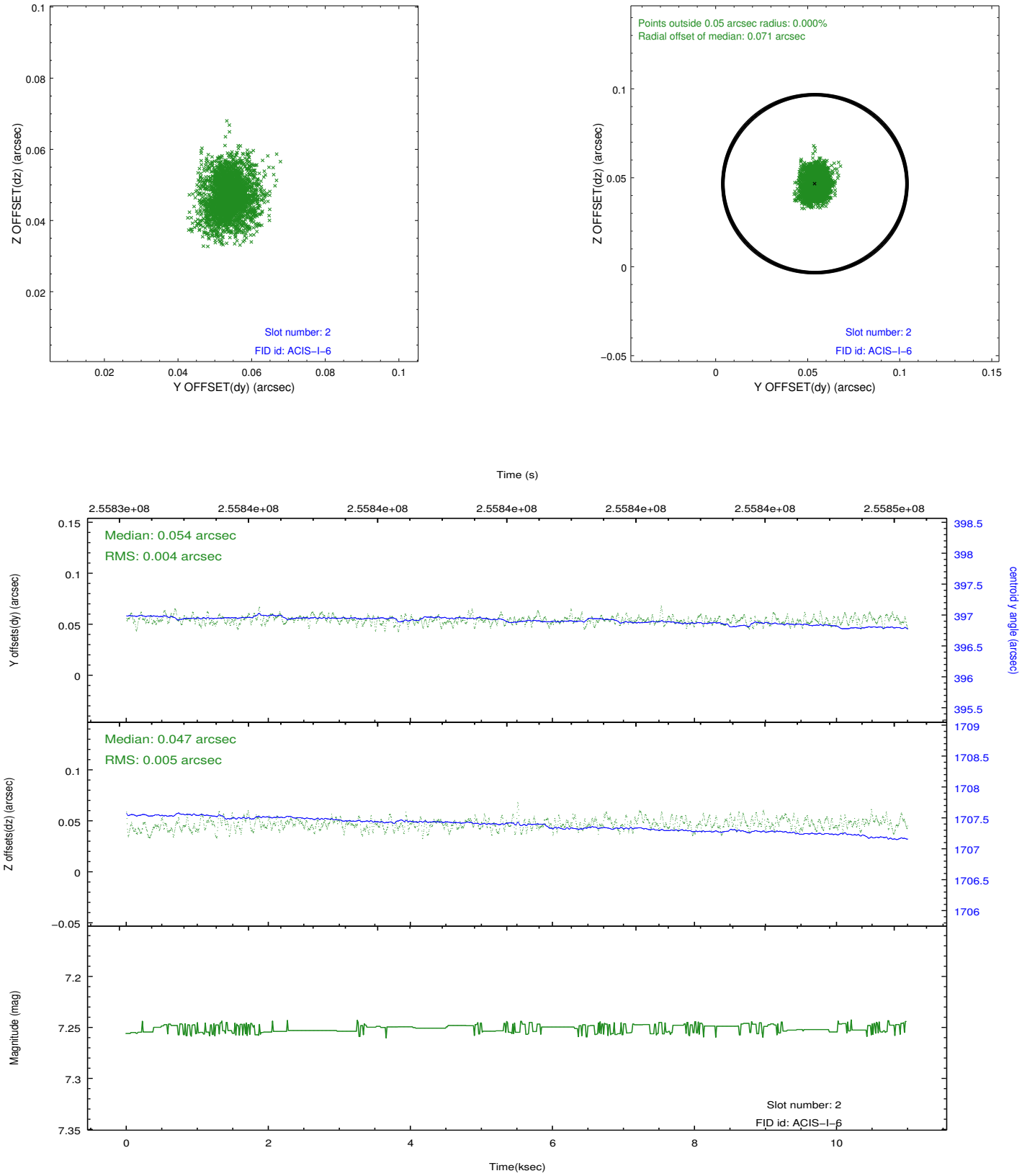
2.5.1 Slot 0



2.5.2 Slot 1



2.5.3 Slot 2



A Summary

A.1 Status

V&V Scientist	Jen Lauer
V&V Date (YYYY-MM-DD)	2012.03.27
V&V Edition	1
V&V Disposition and Status	OK
V&V Charge Time	9.95519996

A.2 Comments