

# V&V Reference Report

## L2 ASCDS Version : 7.6.9

Observation 62851 - L2 Version 001  
Chandra X-Ray Center

L2 Processing Date : Sep 23 2006

## Contents

<b>1</b>	<b>Front</b>	<b>2</b>
<b>2</b>	<b>OBI</b>	<b>3</b>
2.1	OBI . . . . .	3
2.1.1	Images . . . . .	3
2.1.2	Bias . . . . .	3
2.1.3	Parameters . . . . .	4
2.1.4	Events . . . . .	4
2.2	Compared Parameters . . . . .	5
2.3	Aspect . . . . .	6
2.4	Star Slots . . . . .	8
2.5	FID Slots . . . . .	8
<b>A</b>	<b>Summary</b>	<b>9</b>
A.1	Status . . . . .	9
A.2	Comments . . . . .	9

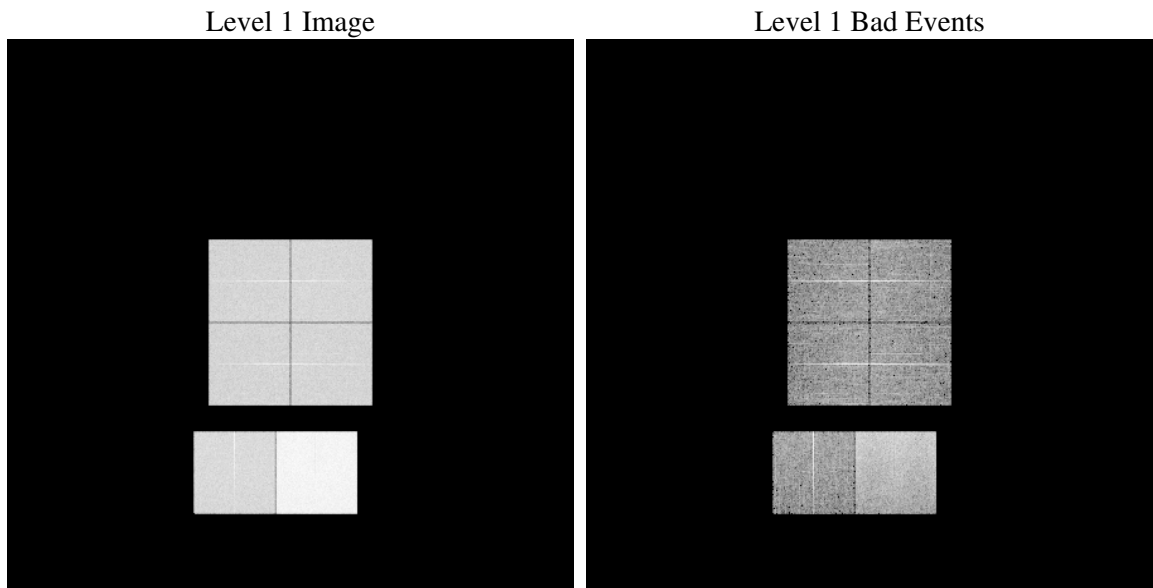
# 1 Front

seq_num	&#160
obs_id	62851
title	ACIS-012367 diagnostics
observer	CHANDRA engineering request/realtime commanding
object	&#160
dtcycle	0
cycle	P
ra_targ	0.0
dec_targ	0.0
ra_nom	67.905457018043
dec_nom	-5.0676875531019
roll_nom	120.65496835469
revision	2
ontime	10847.999959588
livetime	10710.636052218
ontime0	4880.5401499271
ontime1	5043.4336229563
ontime2	4686.9227627814
ontime3	4786.4687978625
ontime6	5224.2082162499
ontime7	10847.999959588
l2events	1661736

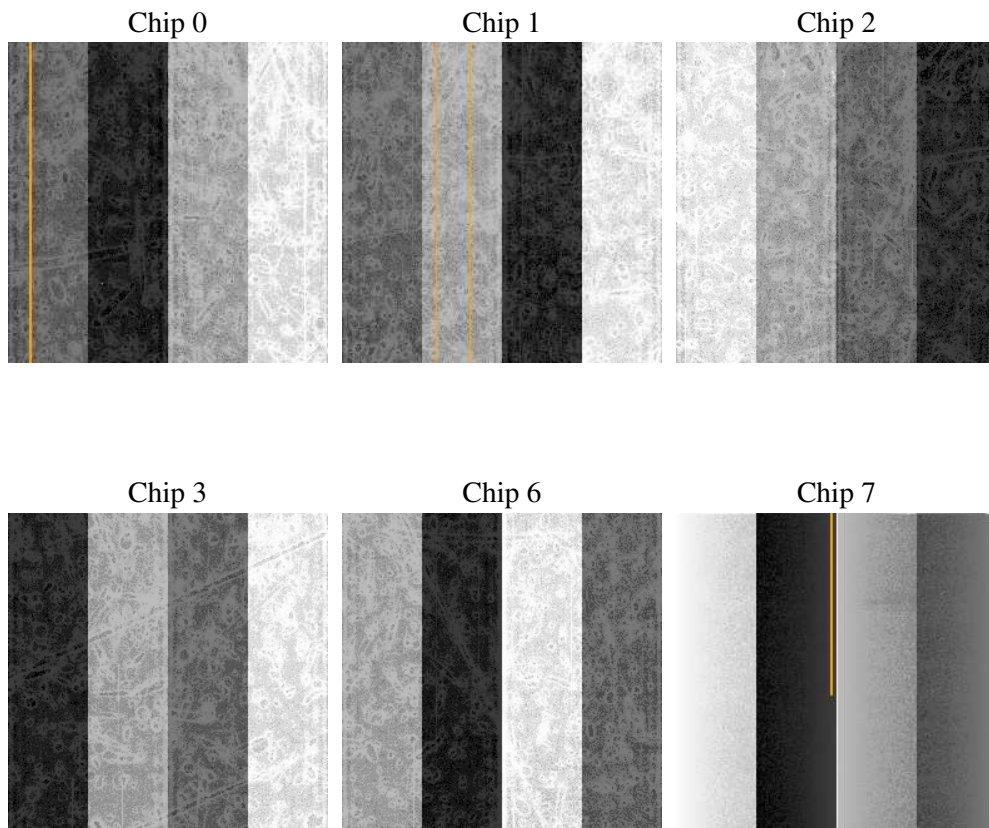
## 2 OBI

### 2.1 OBI

#### 2.1.1 Images



#### 2.1.2 Bias



### 2.1.3 Parameters

obi_num	0
ascdsver	7.6.9
caldbver	3.2.3
date	2006-09-23T04:52:08
revision	2

sched_exp_time	0.0
ontime	10909.18961814
ontime0	4906.9220249057
ontime1	5075.4546092749
ontime2	4715.7027191222
ontime3	4812.9327030182
ontime6	5253.7079614103
ontime7	10909.18961814
l1events	1996399

### 2.1.4 Events

	ccd 0	ccd 1	ccd 2	ccd 3	ccd 6	ccd 7
level 1 events	270241	279164	264703	270271	303602	608418
rejected events	34850	35823	35891	36446	38342	80339
rejected %	12%	12%	13%	13%	12%	13%

	ccd 0	ccd 1	ccd 2	ccd 3	ccd 6	ccd 7
grade 0 events	130263	134963	127984	130679	144993	96035
	48%	48%	48%	48%	47%	15%
grade 1 events	698	693	616	671	674	248
	0%	0%	0%	0%	0%	0%
grade 2 events	41842	43299	40205	41418	46259	161027
	15%	15%	15%	15%	15%	26%
grade 3 events	14999	15481	14291	15197	16490	38963
	5%	5%	5%	5%	5%	6%
grade 4 events	14829	15382	14425	14917	16577	38920
	5%	5%	5%	5%	5%	6%
grade 5 events	2399	2477	2252	2517	2815	10179
	0%	0%	0%	0%	0%	1%
grade 6 events	34725	35800	33333	32907	42386	196118
	12%	12%	12%	12%	13%	32%
grade 7 events	30486	31069	31597	31965	33408	66928
	11%	11%	11%	11%	11%	11%

## 2.2 Compared Parameters

Parameter	Planned	Actual	Parameter	Planned	Actual
Instrument	ACIS	ACIS	Obspar format version number	6	6
Detector	ACIS-012367	ACIS-012367	Obspar file type	PREDICTED	ACTUAL
Grating	NONE	NONE	Obspar update status	NONE	UPDATED
Data mode	FAINT	FAINT	On-chip summing requested	N	N
Observation mode	SECONDARY	SECONDARY	Subarray requested	NONE	NONE
Pointing RA	0	67.90545701804325	Alternating exposures requested	N	N
Pointing Dec	0	-5.067687553101896	Primary exposure time	0.000000	3.2
Pointing Roll	0.0	120.6549683546872			
SIM focus pos (mm)	-0.782348	-0.7809083437167272			
SIM defocus (mm)	0	0.7524282956875696			
SIM translation stage pos (mm)	-233.592463	250.4635187648994			
SIM translation stage offset (mm)	0	-0.007540371344731511			
Observation start time	143375471.296	143375470.27081			
Observation start date	2002-07-18T10:31:11	2002-07-18T10:31:10			
Observation end time	143388244.846	143388243.82133			
Observation end date	2002-07-18T14:04:05	2002-07-18T14:04:03			
Read mode	TIMED	TIMED			

## 2.3 Aspect



## **2.4 Star Slots**

## **2.5 FID Slots**



## A Summary

### A.1 Status

V&V Scientist	Beth Sundheim
V&V Date (YYYY-MM-DD)	2006.09.25
V&V Edition	1
V&V Disposition and Status	OK
V&V Charge Time	10.8479999

### A.2 Comments