

V&V Reference Report

L2 ASCDS Version : 8.5.1.1

Observation 6281 - L2 Version 3
Chandra X-Ray Center

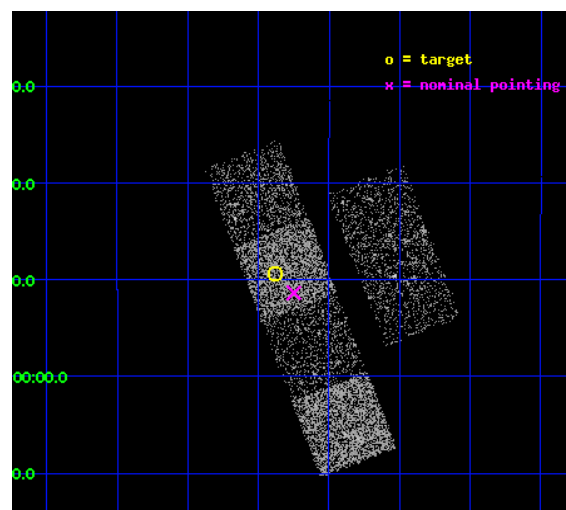
L2 Processing Date : Dec 25 2012

Contents

1	Front	2
2	OBI	3
2.1	OBI	3
2.1.1	Images	3
2.1.2	Bias	3
2.1.3	Parameters	4
2.1.4	Events	4
2.2	Compared Parameters	5
2.3	Aspect	6
2.4	Star Slots	9
2.4.1	Slot 3	9
2.4.2	Slot 4	10
2.4.3	Slot 5	11
2.4.4	Slot 6	12
2.4.5	Slot 7	13
2.5	FID Slots	14
2.5.1	Slot 0	14
2.5.2	Slot 1	15
2.5.3	Slot 2	16
A	Summary	17
A.1	Status	17
A.2	Comments	17

1 Front

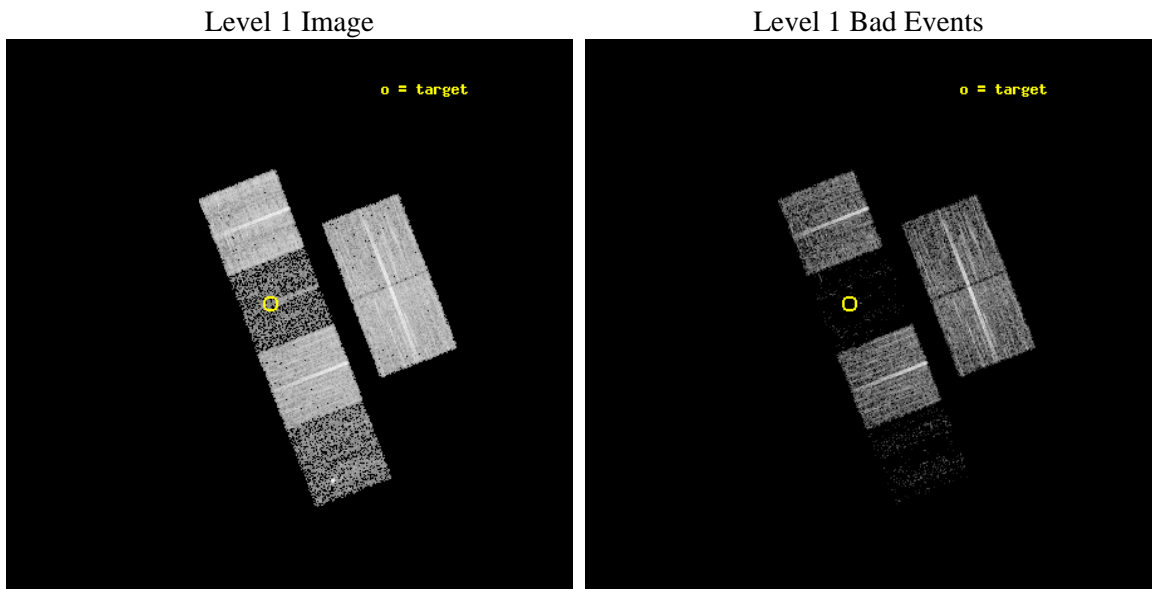
seq_num	100060	Sequence number
obs_id	6281	Observation id
title	Comet 9P/Tempel 1 During the Deep Impact Encounter	Proposal title
observer	Dr. Carey Lisse	Principal investigator
object	9P/Tempel 1	Source name
dtcycle	0	
cycle	P	events from which exps? Prim/Second/Both
ra_targ	204.720229	Observer's specified target RA [deg]
dec_targ	-9.82286	Observer's specified target Dec [deg]
ra_nom	204.68715359812	Nominal RA [deg]
dec_nom	-9.8562172029256	Nominal Dec [deg]
roll_nom	248.89030374429	Nominal Roll [deg]
revision	3	Processing version of data
ontime	8211.1999694109	Sum of GTIs [s]
livetime	8107.2248112072	Livetime [s]
ontime2	8207.9590091109	Sum of GTIs [s]
ontime3	8211.1999694109	Sum of GTIs [s]
ontime5	8211.1999694109	Sum of GTIs [s]
ontime6	8211.1999694109	Sum of GTIs [s]
ontime7	8211.1999694109	Sum of GTIs [s]
ontime8	8211.1999694109	Sum of GTIs [s]
l2events	12085	Number of level 2 events



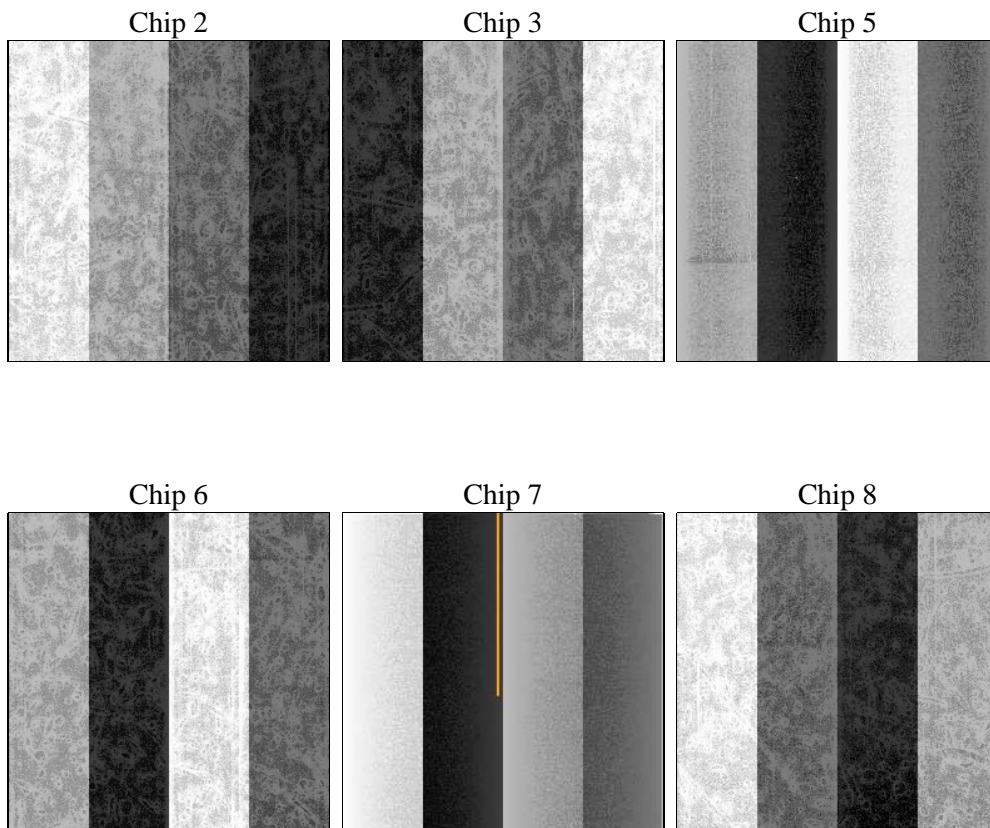
2 OBI

2.1 OBI

2.1.1 Images



2.1.2 Bias



2.1.3 Parameters

obi_num	0	Obi number	sched_exp_time	8029.000000	[s] Scheduled observation exposure time
ascdsver	8.5.1.1	Processing system revision	ontime	8211.1999694109	Sum of GTIs [s]
caldsver	4.5.5	 	ontime2	8207.9590091109	Sum of GTIs [s]
date	2012-12-25T21:24:27	Date and time of file creation	ontime3	8211.1999694109	Sum of GTIs [s]
revision	3	Processing version of data	ontime5	8211.1999694109	Sum of GTIs [s]
			ontime6	8211.1999694109	Sum of GTIs [s]
			ontime7	8211.1999694109	Sum of GTIs [s]
			ontime8	8211.1999694109	Sum of GTIs [s]
			l1events	167269	Number of level 1 events

2.1.4 Events

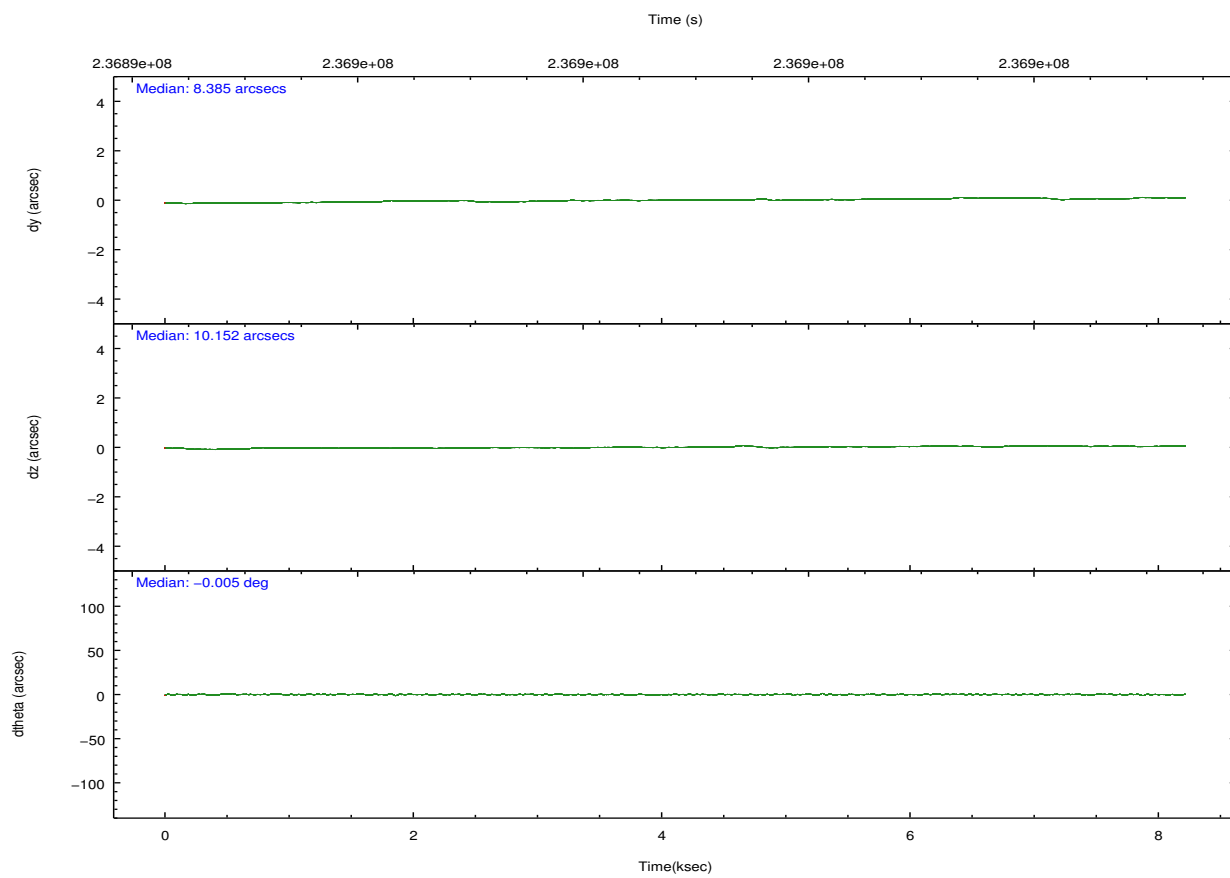
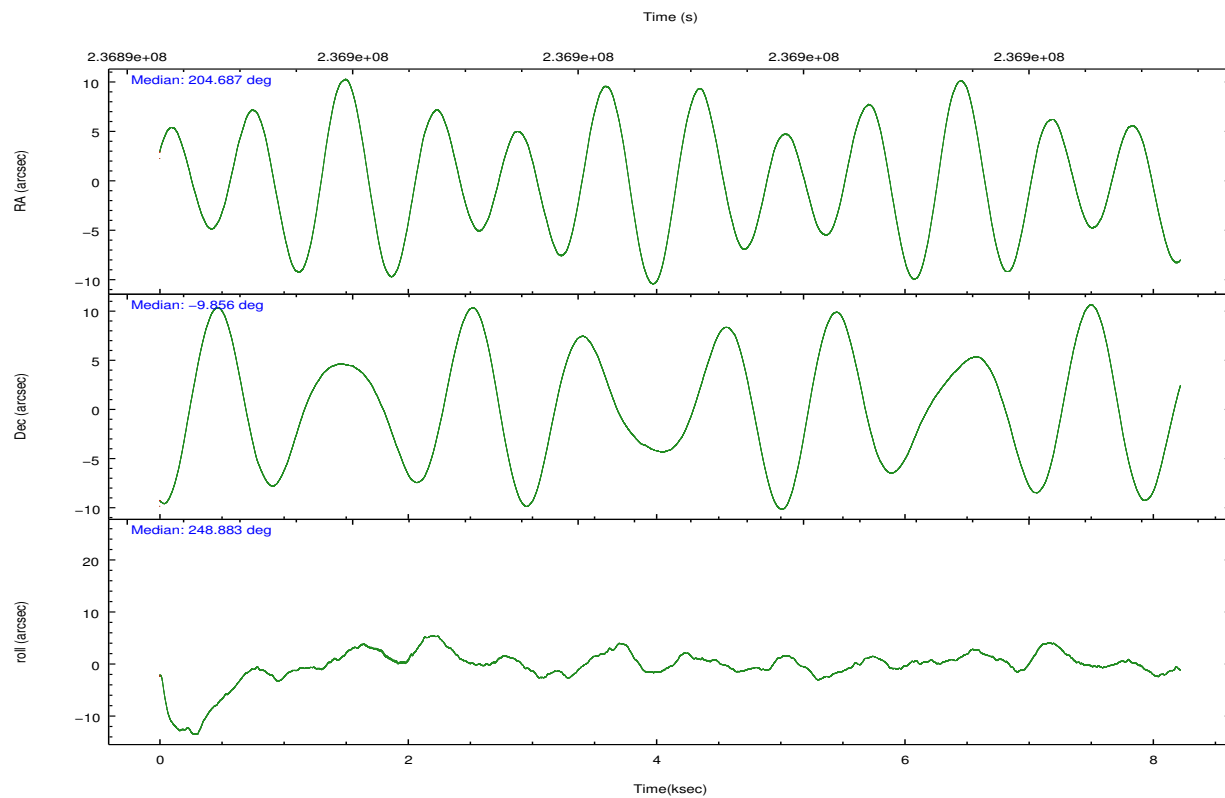
	ccd 2	ccd 3	ccd 5	ccd 6	ccd 7	ccd 8
level 1 events	42164	34724	7205	35329	5306	42541
rejected events	40399	33384	2307	33776	1224	31859
rejected %	95%	96%	32%	95%	23%	74%

	ccd 2	ccd 3	ccd 5	ccd 6	ccd 7	ccd 8
grade 0 events	752	679	1647	725	1097	2912
	1%	1%	22%	2%	20%	6%
grade 1 events	18	3	46	17	31	23
	0%	0%	0%	0%	0%	0%
grade 2 events	394	176	1804	292	1357	2542
	0%	0%	25%	0%	25%	5%
grade 3 events	224	218	537	228	609	1195
	0%	0%	7%	0%	11%	2%
grade 4 events	249	188	519	206	597	1097
	0%	0%	7%	0%	11%	2%
grade 5 events	49	20	381	32	142	235
	0%	0%	5%	0%	2%	0%
grade 6 events	193	101	492	123	509	3097
	0%	0%	6%	0%	9%	7%
grade 7 events	40285	33339	1779	33706	964	31440
	95%	96%	24%	95%	18%	73%

2.2 Compared Parameters

Parameter	Planned	Actual	Parameter	Planned	Actual
Instrument	ACIS	ACIS	Obspar format version number	7	7
Detector	ACIS-235678	ACIS-235678	Obspar file type	PREDICTED	ACTUAL
Grating	NONE	NONE	Obspar update status	NONE	UPDATED
Data mode	VFAINT	VFAINT	Number of optional ACIS chips dropped	0	0
Observation mode	POINTING	POINTING	On-chip summing requested	N	N
[deg] Pointing RA	204.682505	204.6871535981177	Subarray requested	NONE	NONE
[deg] Pointing Dec	-9.829316	-9.856217202925565	Alternating exposures requested	N	N
[deg] Pointing Roll	248.732865	248.8903037442854	[s] Primary exposure time	0.000000	3.2
[mm] SIM focus pos	-0.684267	-0.6828225247311905			
[mm] SIM defocus	0	0.001444936568705701			
[mm] SIM translation stage pos	-190.132523	-190.145094680475			
[mm] SIM translation stage offset	0	0.01257209746719923			
[s] Observation start time (MET)	236894893.184000	236894517.09961			
Observation start date	2005-07-04T20:07:09	2005-07-04T20:01:57			
[s] Observation end time (MET)	236902922.184000	236903147.08751			
Observation end date	2005-07-04T22:20:58	2005-07-04T22:25:47			
Read mode	TIMED	TIMED			

2.3 Aspect

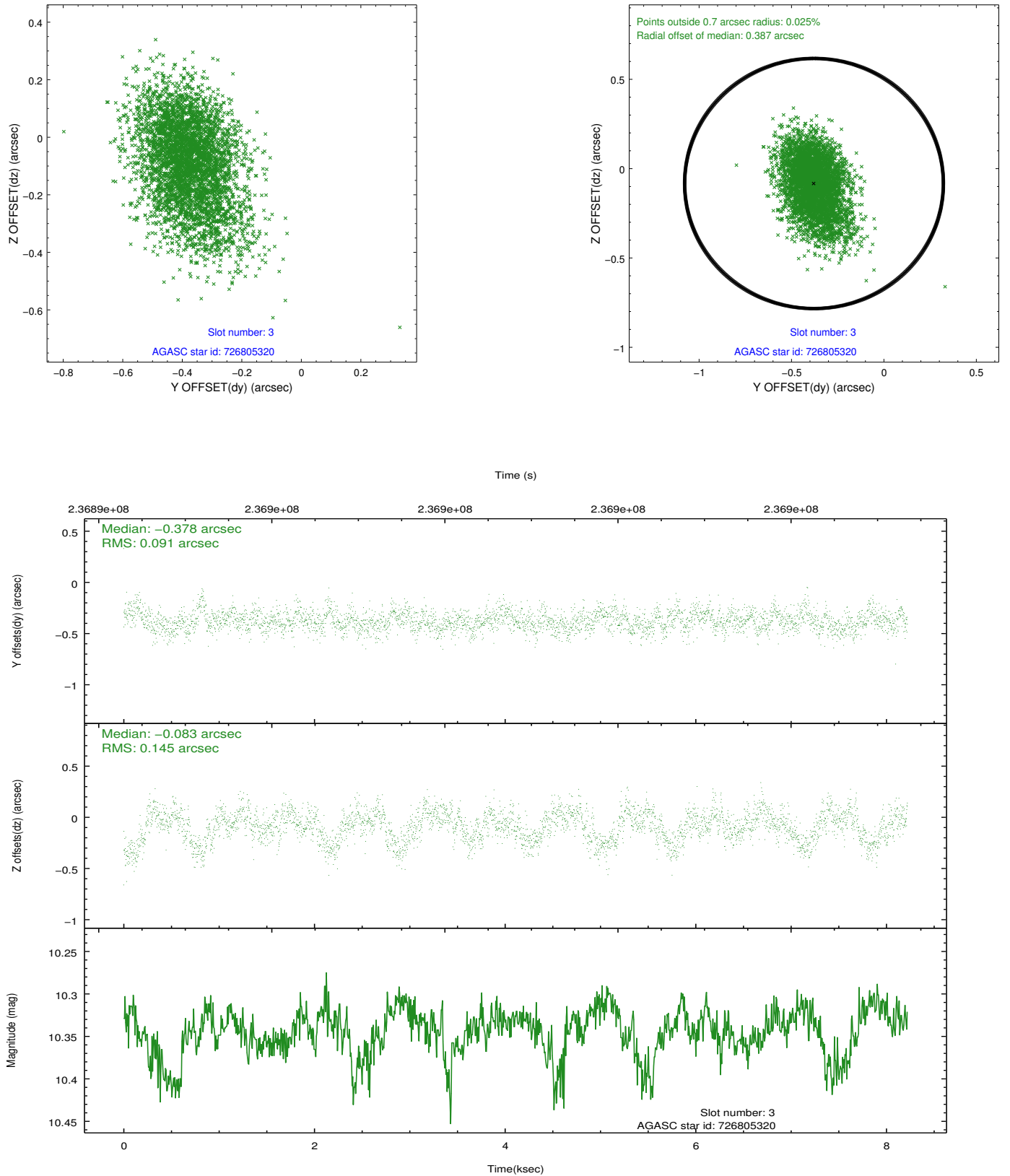


Slot Statistics

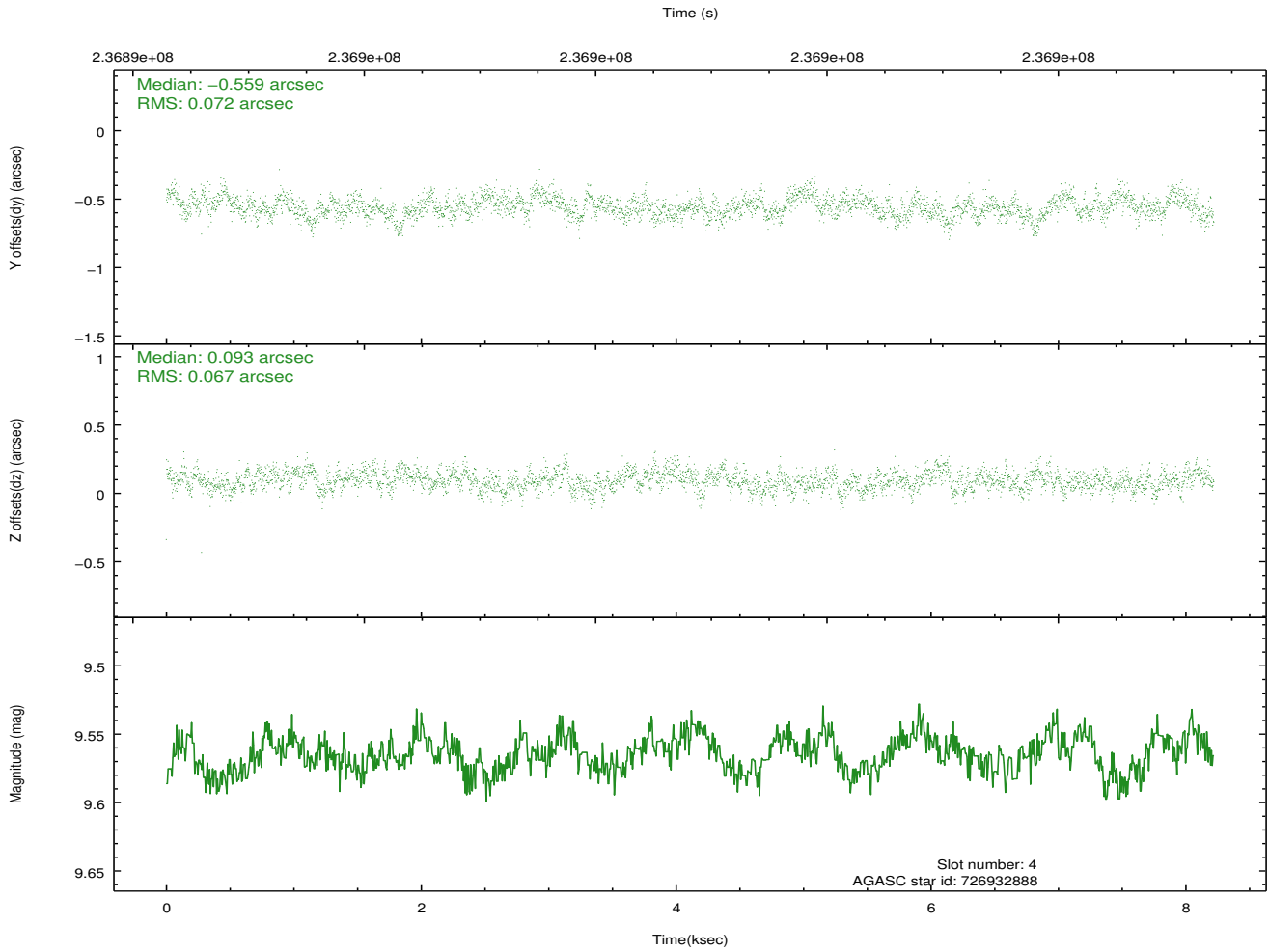
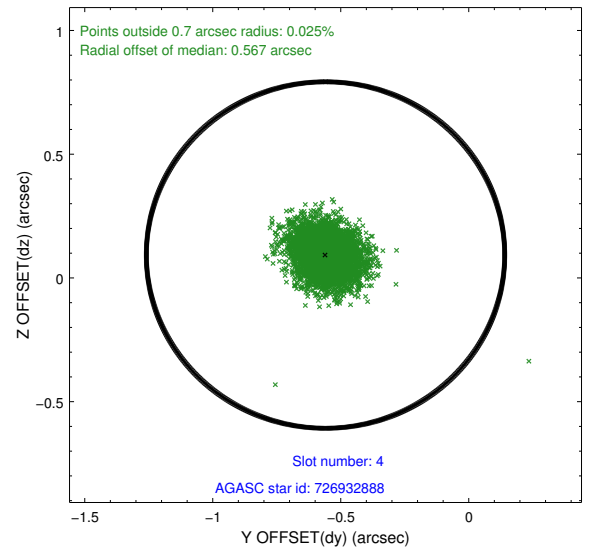
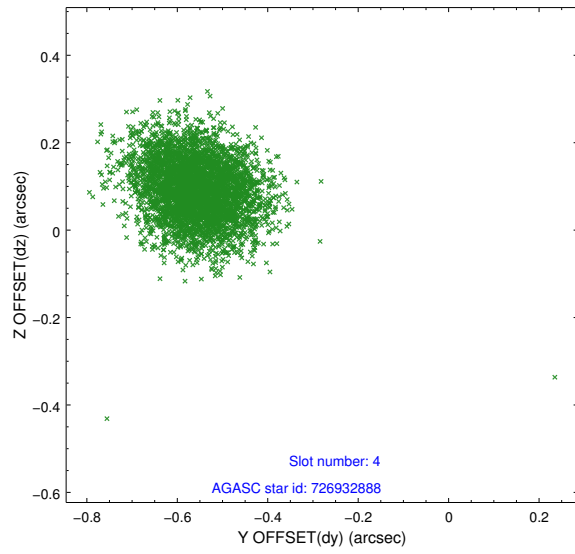
slot	status	id	mag	n_pts	med_dy	med_dz	dr1	dr2	ra	dec	mean_y	mean_z
0	FID	ACIS-S-2	7.11	2006	-0.043	-0.031	0.007	0.012	0.000000	0.000000	-761.17	-1731.35
1	FID	ACIS-S-4	7.20	2006	0.137	0.029	0.007	0.013	0.000000	0.000000	2151.93	176.56
2	FID	ACIS-S-5	7.23	2006	-0.125	0.011	0.008	0.012	0.000000	0.000000	-1813.27	170.89
3	GUIDE	726805320	10.34	4007	-0.378	-0.083	0.179	0.306	204.212849	-9.734967	289.08	-1675.86
4	GUIDE	726932888	9.56	4007	-0.559	0.093	0.104	0.169	204.640397	-9.165404	-2173.05	-1007.06
5	GUIDE	726935840	9.51	4006	0.764	-0.562	0.106	0.175	205.084608	-9.297514	-2301.12	636.15
6	GUIDE	727320712	10.44	3998	0.130	0.255	0.158	0.246	204.468965	-10.254166	1699.87	-149.47
7	GUIDE	727321032	9.99	4008	0.040	0.307	0.142	0.226	205.073686	-10.196206	729.50	1771.31

2.4 Star Slots

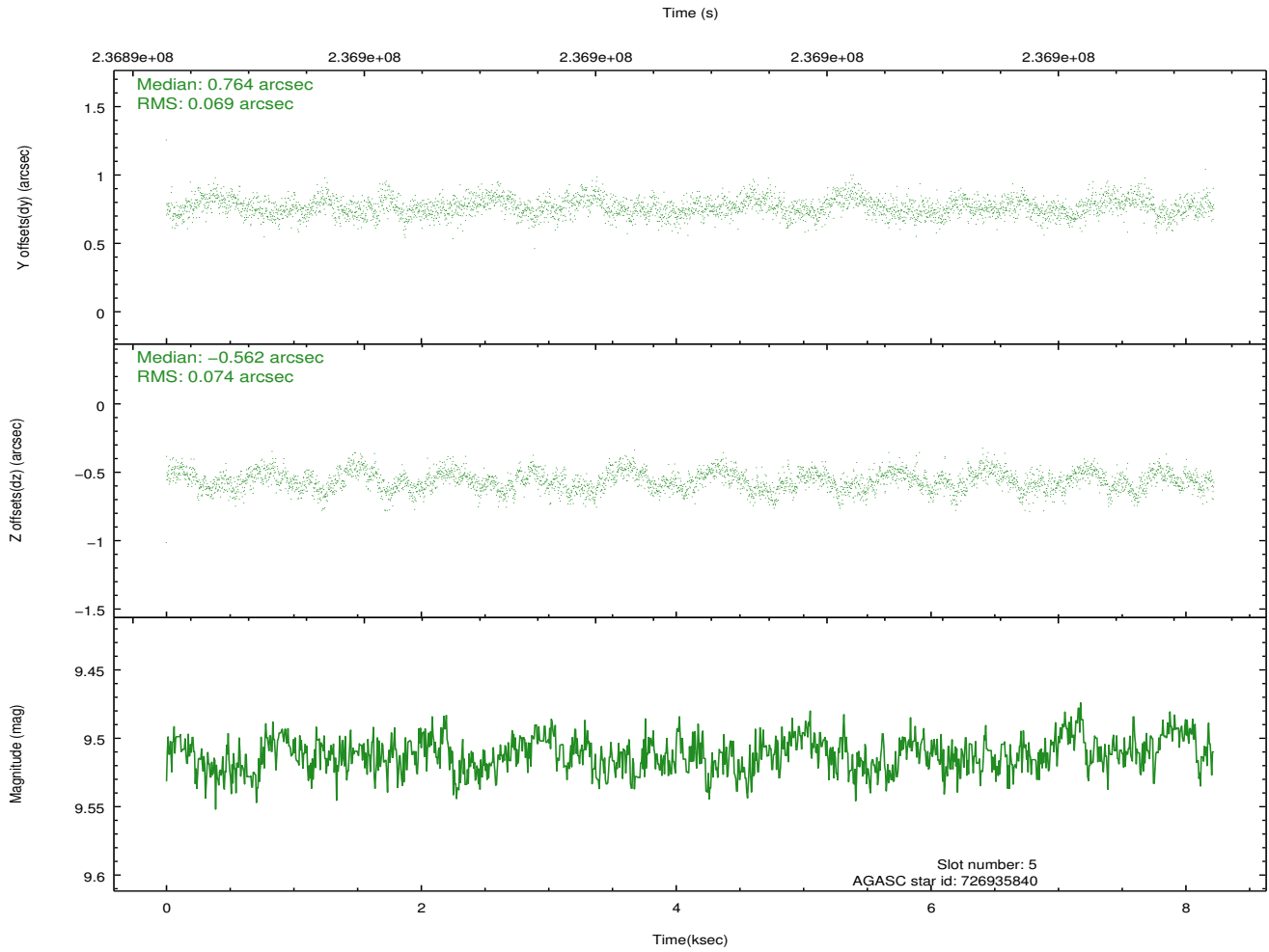
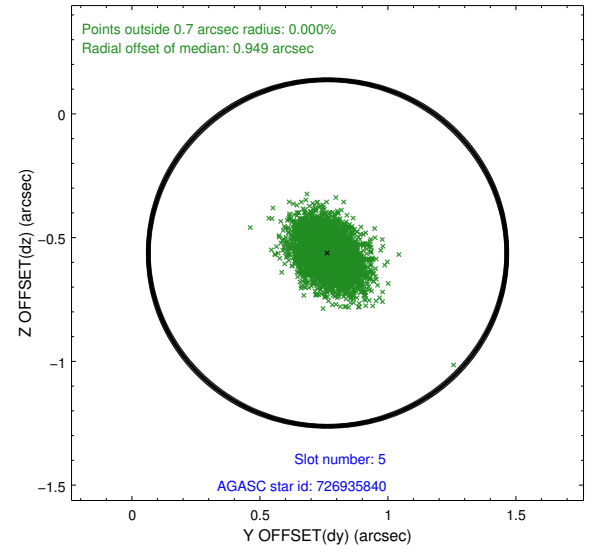
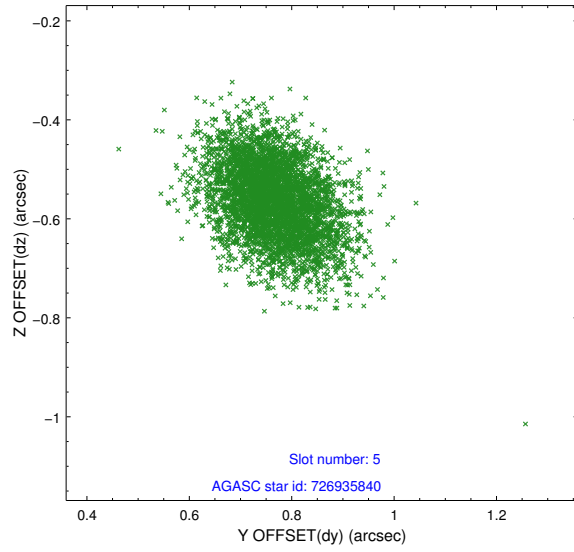
2.4.1 Slot 3



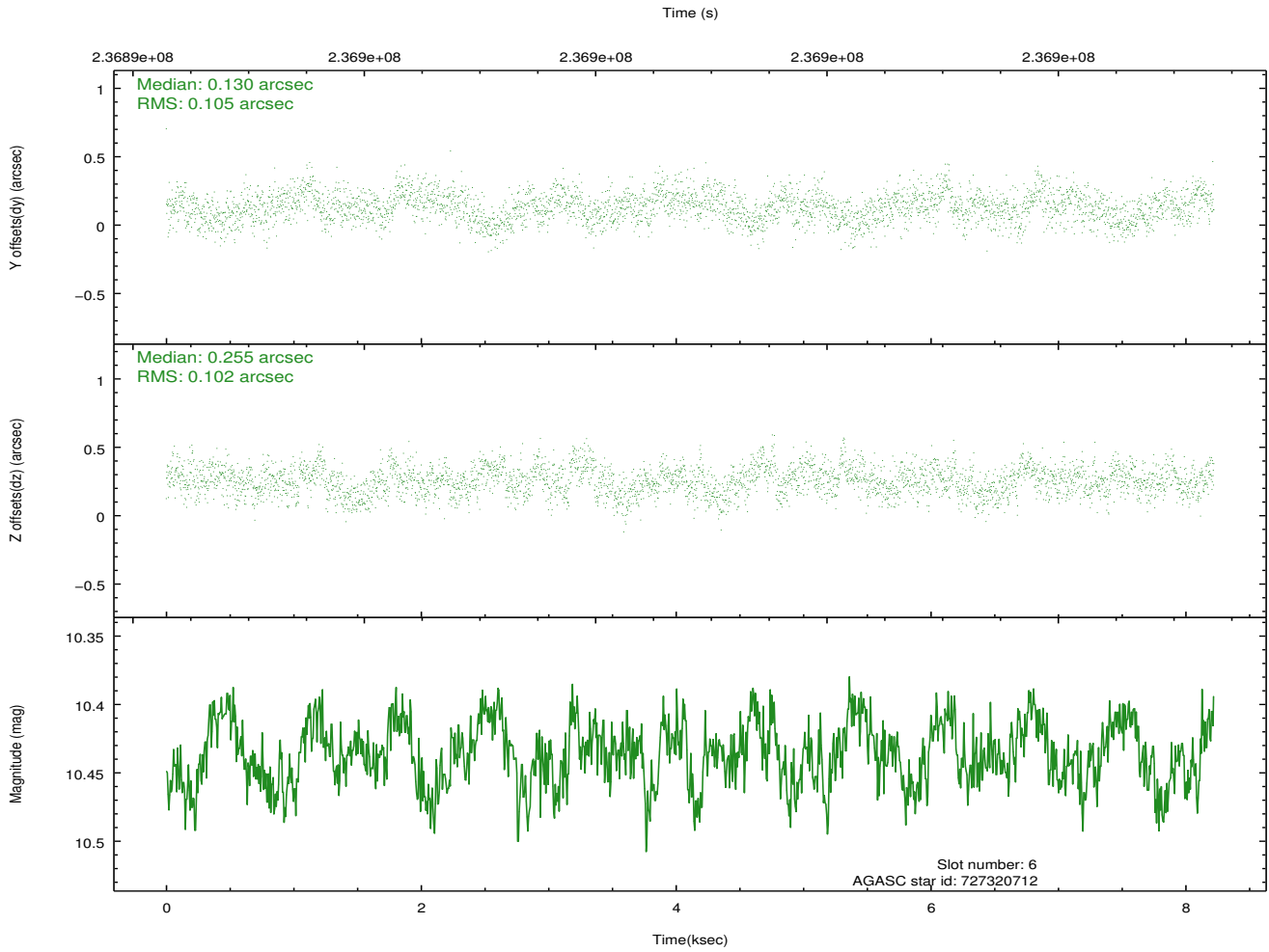
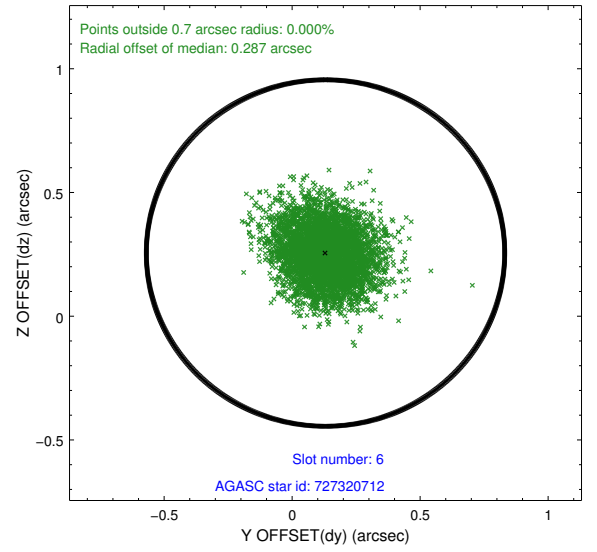
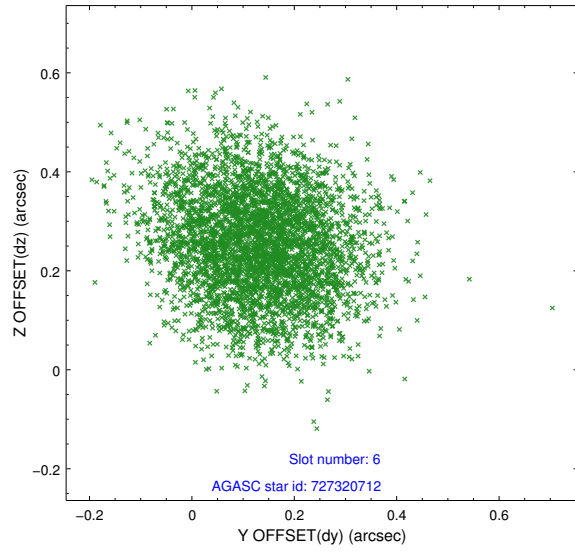
2.4.2 Slot 4



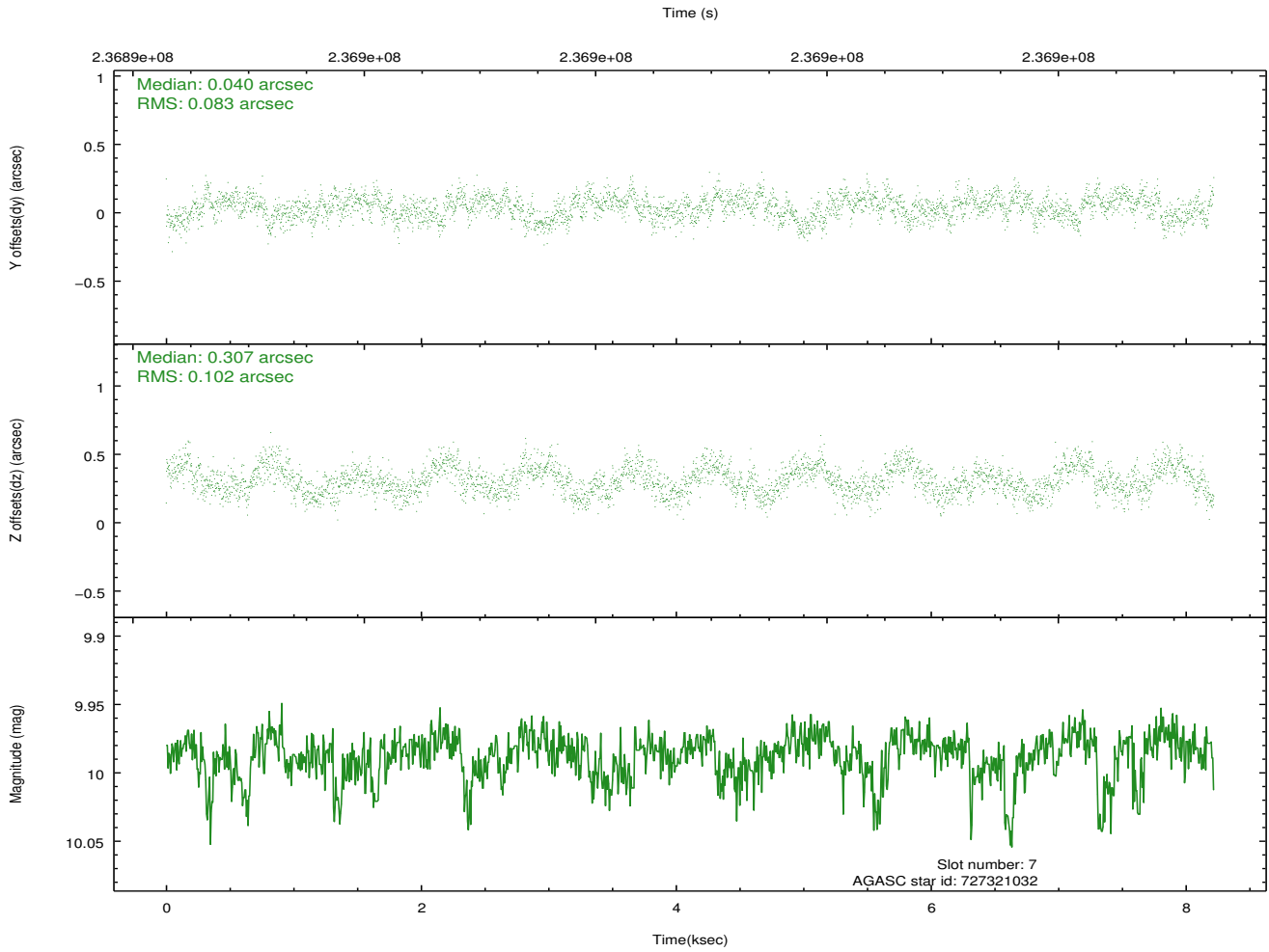
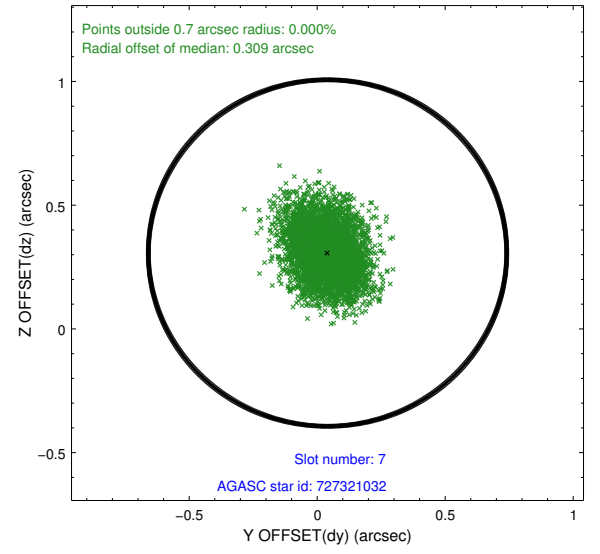
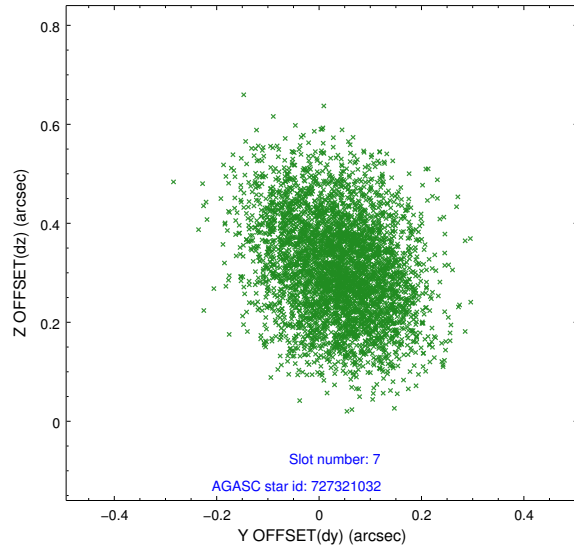
2.4.3 Slot 5



2.4.4 Slot 6

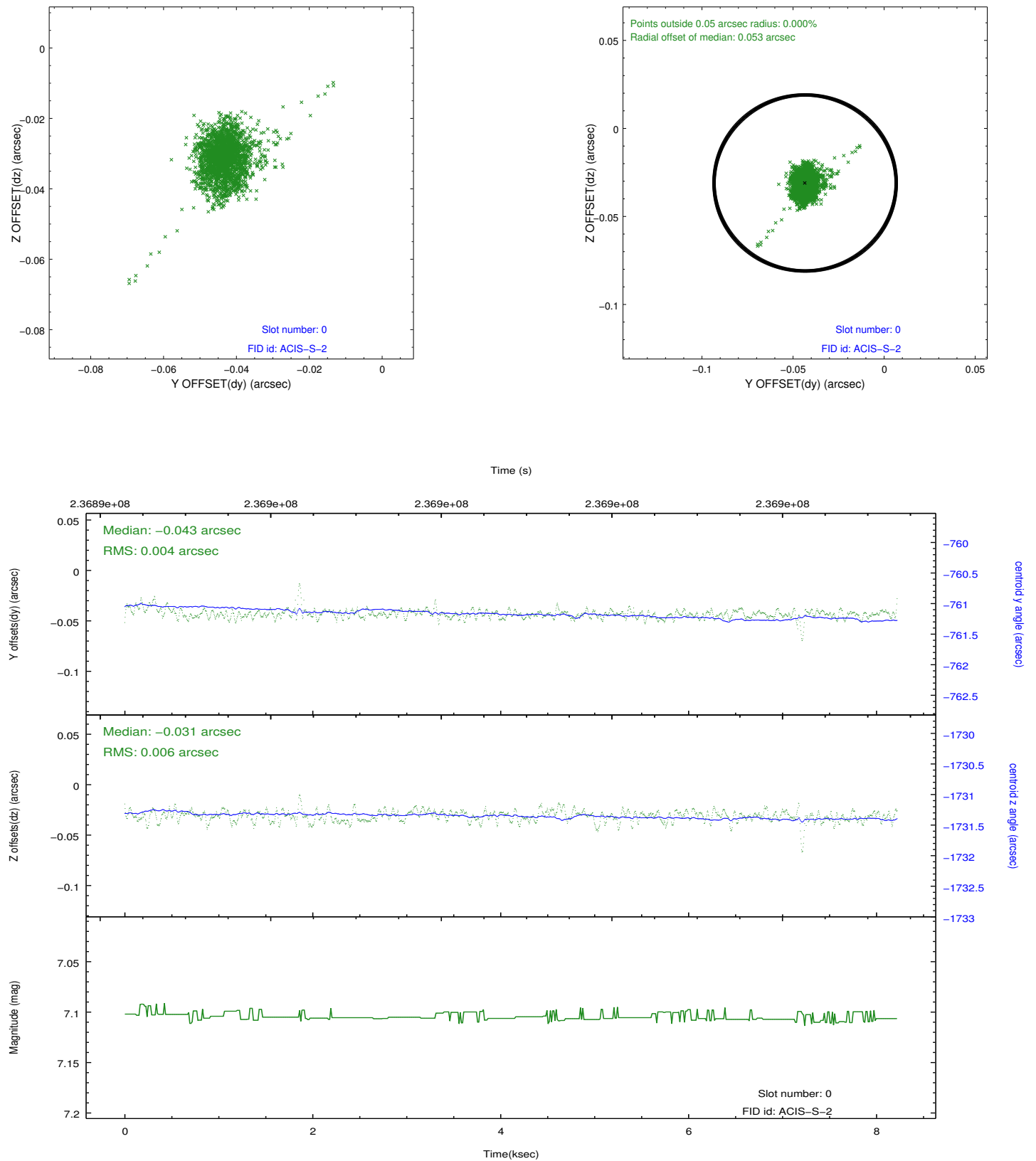


2.4.5 Slot 7

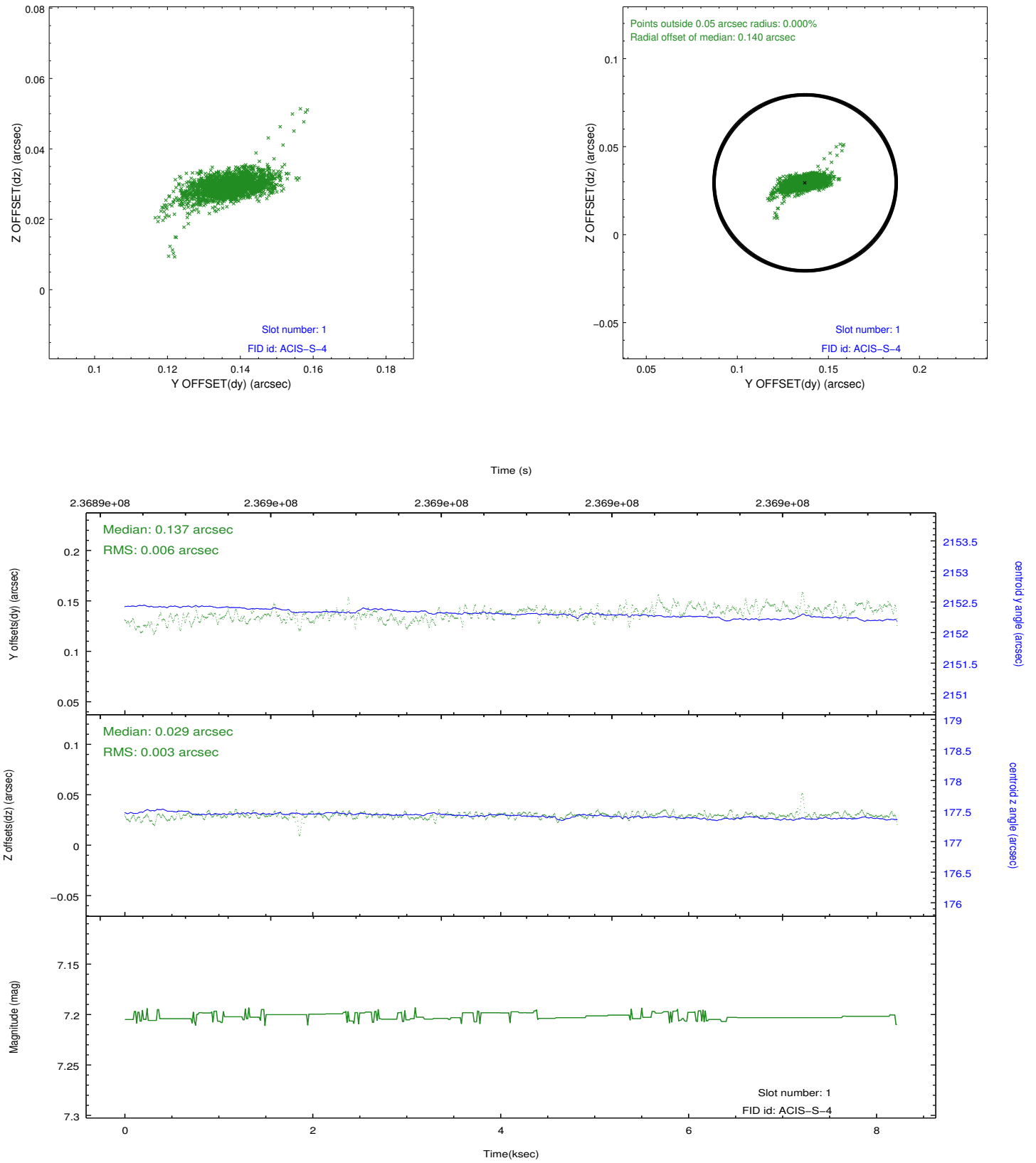


2.5 FID Slots

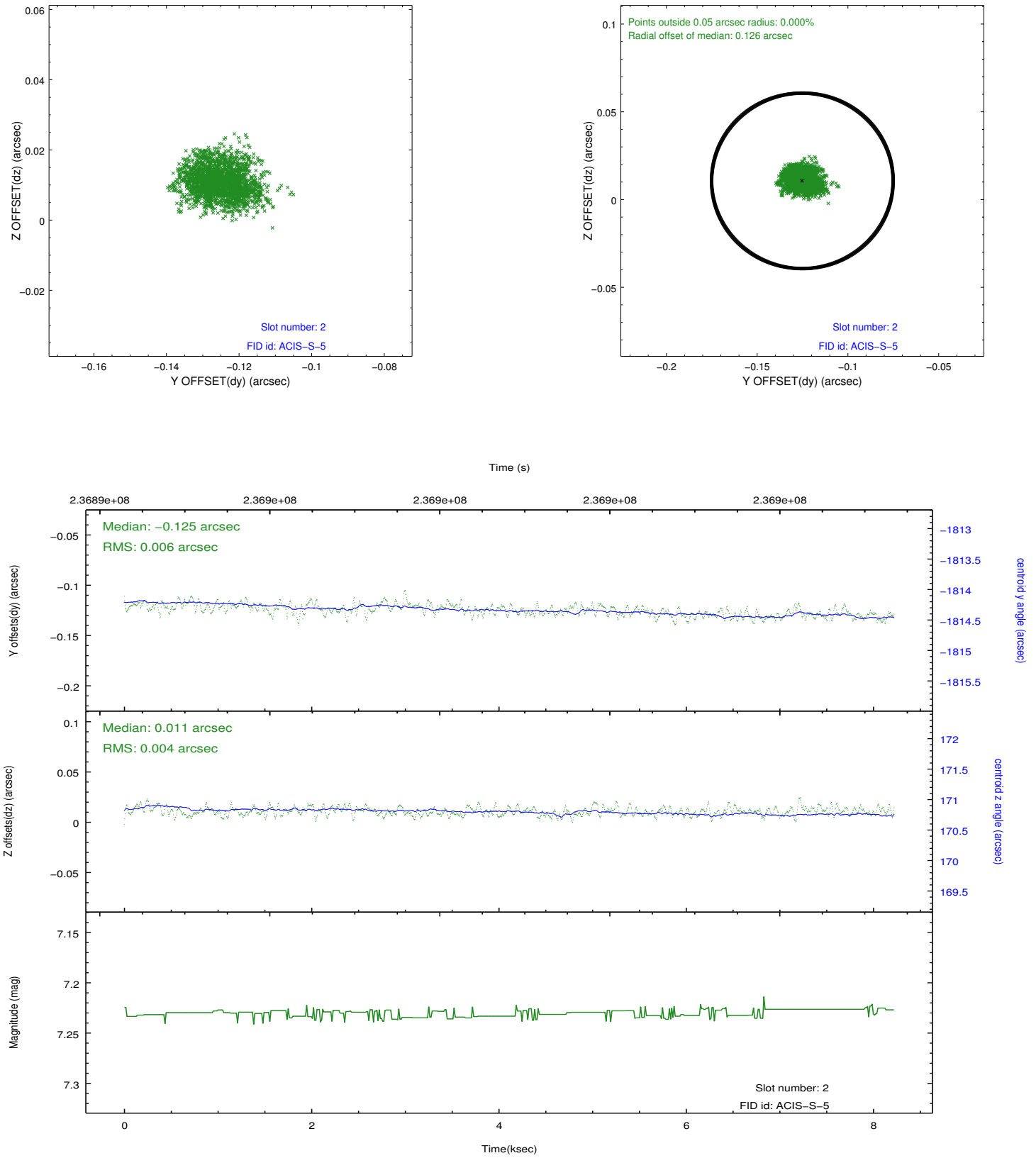
2.5.1 Slot 0



2.5.2 Slot 1



2.5.3 Slot 2



A Summary

A.1 Status

V&V Scientist	Jen Lauer
V&V Date (YYYY-MM-DD)	2013.01.17
V&V Edition	1
V&V Disposition and Status	OK
V&V Charge Time	8.211199

A.2 Comments

This is a moving target. Users will need to run `sso_freeze` or similar software to position the events in the reference frame of the target.