

V&V Reference Report

L2 ASCDS Version : 8.4.3

Observation 62681 - L2 Version 1
Chandra X-Ray Center

L2 Processing Date : Mar 14 2012

Contents

1	Front	2
2	OBI	3
2.1	OBI	3
2.1.1	Images	3
2.1.2	Bias	3
2.1.3	Parameters	4
2.1.4	Events	4
2.2	Compared Parameters	5
2.3	Star Slots	6
2.4	FID Slots	6
A	Summary	7
A.1	Status	7
A.2	Comments	7

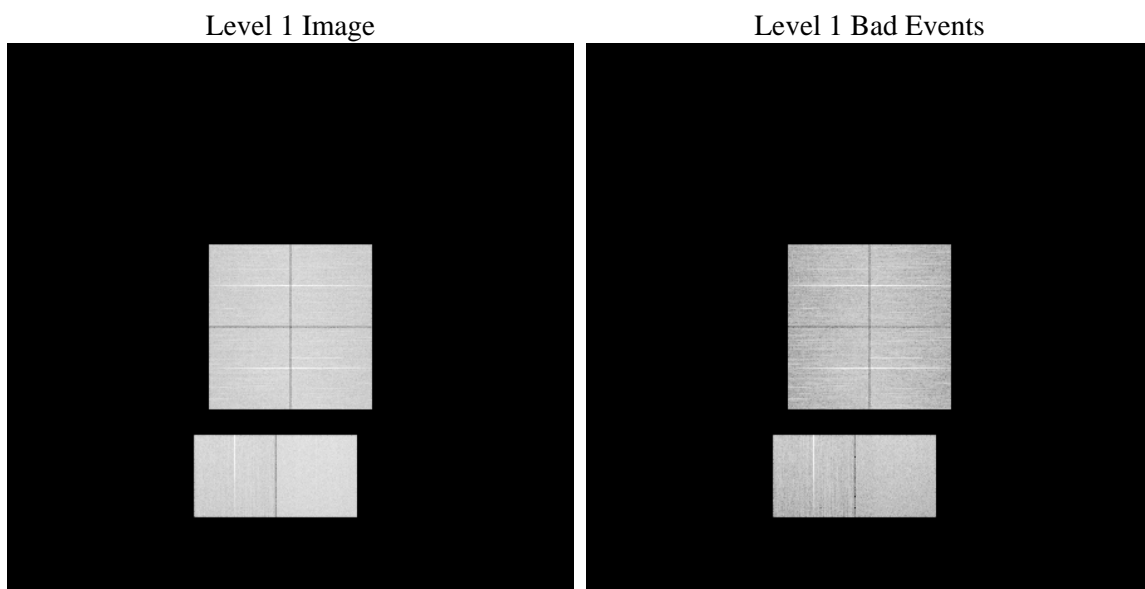
1 Front

seq_num	 	Sequence number
obs_id	62681	Observation id
title	ACIS-012367 diagnostics	Proposal title
observer	CHANDRA engineering request/realtime commanding	Principal investig
object	 	Source name
dtycle	0	
cycle	P	events from which exps? Prim/Second/Both
ra_targ	0.0	Observer's specified target RA [deg]
dec_targ	0.0	Observer's specified target Dec [deg]
ra_nom	291.1333033367	Nominal RA [deg]
dec_nom	50.245040122757	Nominal Dec [deg]
roll_nom	68.070883458557	Nominal Roll [deg]
revision	1	Processing version of data
ontime	26671.954196632	Sum of GTIs [s]
livetime	26334.217852671	Livetime [s]
ontime0	26671.995236635	Sum of GTIs [s]
ontime1	26671.999900699	Sum of GTIs [s]
ontime2	26668.758960187	Sum of GTIs [s]
ontime3	26671.913156629	Sum of GTIs [s]
ontime6	26671.999900699	Sum of GTIs [s]
ontime7	26671.954196632	Sum of GTIs [s]
l2events	808980	Number of level 2 events

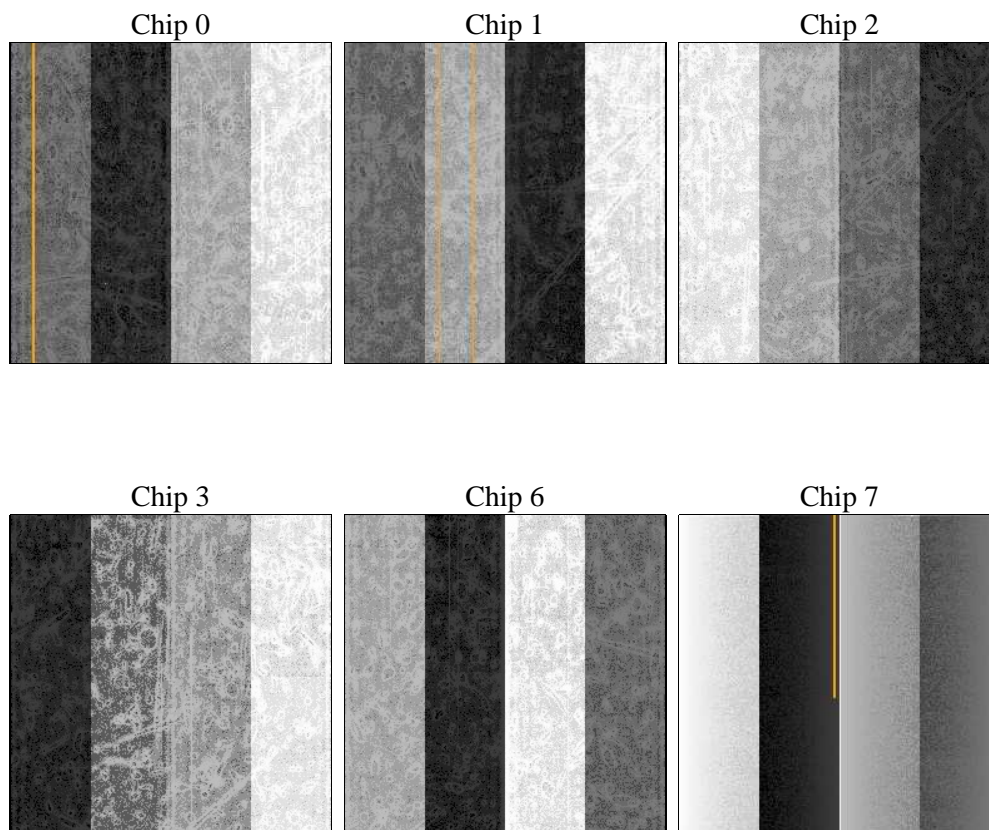
2 OBI

2.1 OBI

2.1.1 Images



2.1.2 Bias



2.1.3 Parameters

obi_num	0	Obi number	sched_exp_time	0.0	[s] Scheduled observation exposure time
ascdsver	8.4.3	Processing system revision	ontime	26671.954196632	Sum of GTIs [s]
caldsver	4.4.8	 	ontime0	26671.995236635	Sum of GTIs [s]
date	2012-03-14T03:12:22	Date and time of file creation	ontime1	26671.999900699	Sum of GTIs [s]
revision	1	Processing version of data	ontime2	26668.758960187	Sum of GTIs [s]
			ontime3	26671.913156629	Sum of GTIs [s]
			ontime6	26671.999900699	Sum of GTIs [s]
			ontime7	26671.954196632	Sum of GTIs [s]
			l1events	1583876	Number of level 1 events

2.1.4 Events

	ccd 0	ccd 1	ccd 2	ccd 3	ccd 6	ccd 7		ccd 0	ccd 1	ccd 2	ccd 3	ccd 6	ccd 7
level 1 events	244663	247130	246451	255937	258966	330729	grade 0 events	69225	67733	70948	71001	70102	34740
rejected events	113399	115775	115394	124104	124082	135844		28%	27%	28%	27%	27%	10%
rejected %	46%	46%	46%	48%	47%	41%	grade 1 events	301	281	353	315	309	263
								0%	0%	0%	0%	0%	0%
							grade 2 events	24232	25507	23127	23322	24450	41771
								9%	10%	9%	9%	9%	12%
							grade 3 events	8842	8740	9081	9130	8829	17498
								3%	3%	3%	3%	3%	5%
							grade 4 events	8835	8696	8747	8863	8850	17506
								3%	3%	3%	3%	3%	5%
							grade 5 events	8454	8375	7797	8751	8518	21332
								3%	3%	3%	3%	3%	6%
							grade 6 events	20130	20679	19154	19517	22653	83370
								8%	8%	7%	7%	8%	25%
							grade 7 events	104644	107119	107244	115038	115255	114249
								42%	43%	43%	44%	44%	34%

2.2 Compared Parameters

Parameter	Planned	Actual	Parameter	Planned	Actual
Instrument	ACIS	ACIS	Obspar format version number	7	7
Detector	ACIS-012367	ACIS-012367	Obspar file type	PREDICTED	ACTUAL
Grating	NONE	NONE	Obspar update status	NONE	UPDATED
Data mode	FAINT	FAINT	Number of optional ACIS chips dropped	0	0
Observation mode	SECONDARY	SECONDARY	On-chip summing requested	N	N
[deg] Pointing RA	0	291.1333033366961	Subarray requested	NONE	NONE
[deg] Pointing Dec	0	50.24504012275713	Alternating exposures requested	N	N
[deg] Pointing Roll	0.0	68.07088345855693	[s] Primary exposure time	3.2	3.2
[mm] SIM focus pos	-1.429586	-0.6828225247311905			
[mm] SIM defocus	0.1037507710433287	0.8505141146731063			
[mm] SIM translation stage pos	250.455976	250.466033080201			
[mm] SIM translation stage offset	0	-0.01005468664627074			
[s] Observation start time (MET)	447972504.049373	447972503.02437			
Observation start date	2012-03-12T20:48:24	2012-03-12T20:48:23			
[s] Observation end time (MET)	448001167.150889	448001166.12589			
Observation end date	2012-03-13T04:46:07	2012-03-13T04:46:06			
Read mode	TIMED	TIMED			

2.3 Star Slots

2.4 FID Slots

A Summary

A.1 Status

V&V Scientist	Jen Lauer
V&V Date (YYYY-MM-DD)	2012.03.14
V&V Edition	1
V&V Disposition and Status	OK
V&V Charge Time	26.671954196632

A.2 Comments