

V&V Reference Report

L2 ASCDS Version : 8.2.1

Observation 62441 - L2 Version 5

Chandra X-Ray Center

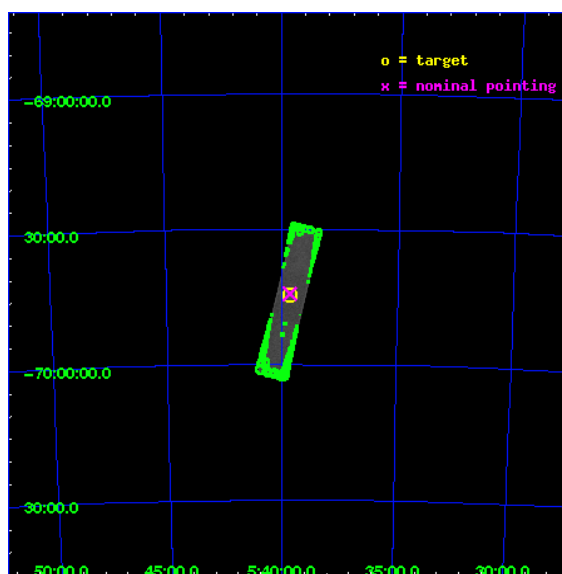
L2 Processing Date : Feb 11 2010

Contents

1	Front	2
2	OBI	3
2.1	OBI	3
2.1.1	Images	3
2.1.2	Parameters	4
2.1.3	Events	4
2.2	Compared Parameters	5
2.3	Aspect	6
2.4	Star Slots	9
2.4.1	Slot 3	9
2.4.2	Slot 4	10
2.4.3	Slot 5	11
2.4.4	Slot 6	12
2.4.5	Slot 7	13
2.5	FID Slots	14
2.5.1	Slot 0	14
2.5.2	Slot 1	15
2.5.3	Slot 2	16
3	Point Sources	17
A	Summary	18
A.1	Status	18
A.2	Comments	18

1 Front

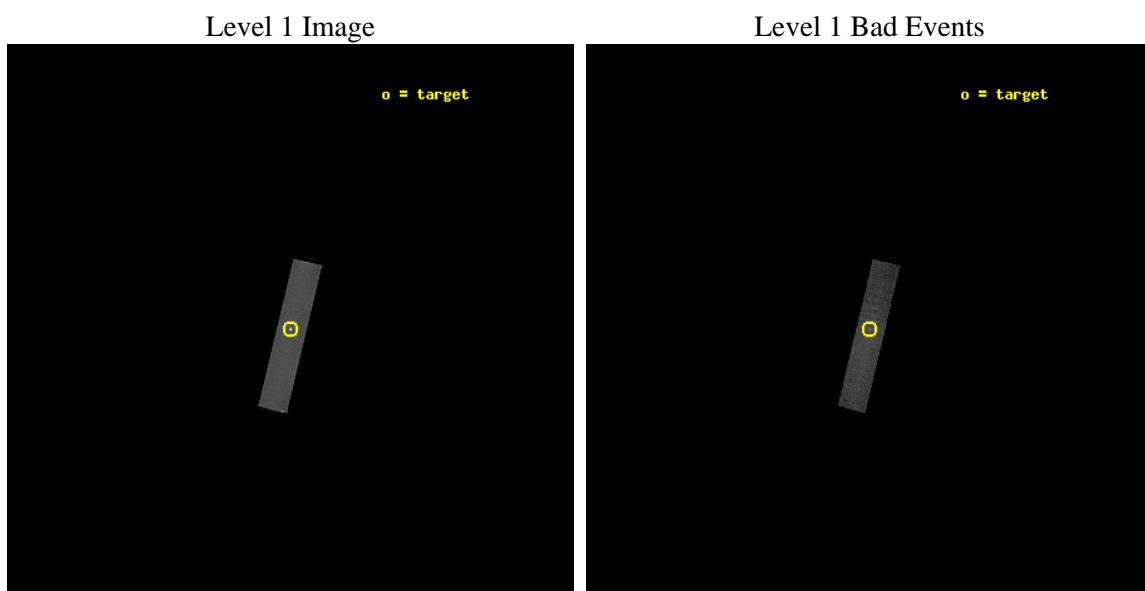
seq_num	490011	Sequence number
obs_id	62441	Observation id
title	 	Proposal title
observer	Dr. CXC Calibration	Principal investigator
object	LMC X-1	Source name
ra_targ	84.914583	Observer's specified target RA
dec_targ	-69.743611	Observer's specified target Dec
ra_nom	84.912707997742	Nominal RA
dec_nom	-69.738223802726	Nominal Dec
roll_nom	103.53011193132	Nominal Roll
revision	5	Processing version of data
ontime	2492.8000895008	[s]
livetime	2466.3619232622	Ontime multiplied by DTCOR
l2events	184436	Number of level 2 events



2 OBI

2.1 OBI

2.1.1 Images



2.1.2 Parameters

obi_num	0	Obi number	sched_exp_time	36000.000000	Scheduled observation exposure time
ascdsver	8.2.1	Processing system revision	ontime	2492.8000895008	[s]
caldbver	4.1.5	 	ll events	234348	Number of level 1 events
date	2010-02-11T20:05:03	Date and time of file creation			
revision	3	Processing version of data			

2.1.3 Events

Level 1 Events

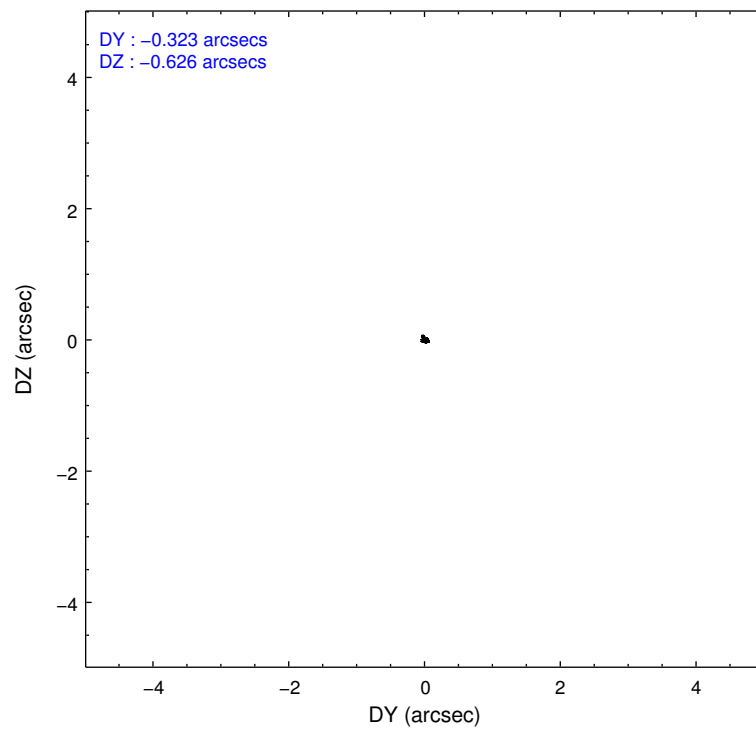
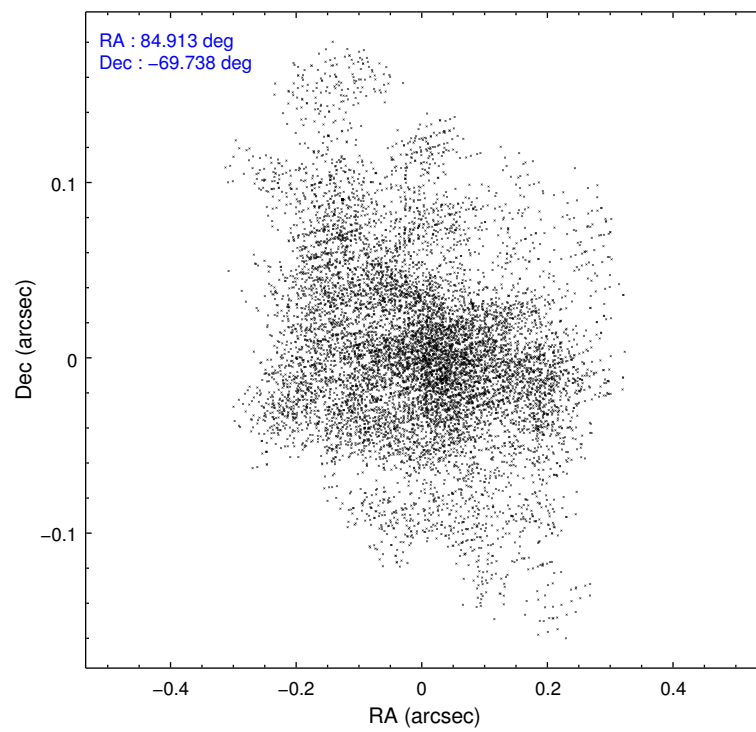
	segment 1	segment 2	segment 3
level 1 events	0	234348	0
rejected events	0	40818	0
rejected %	0%	17%	0%

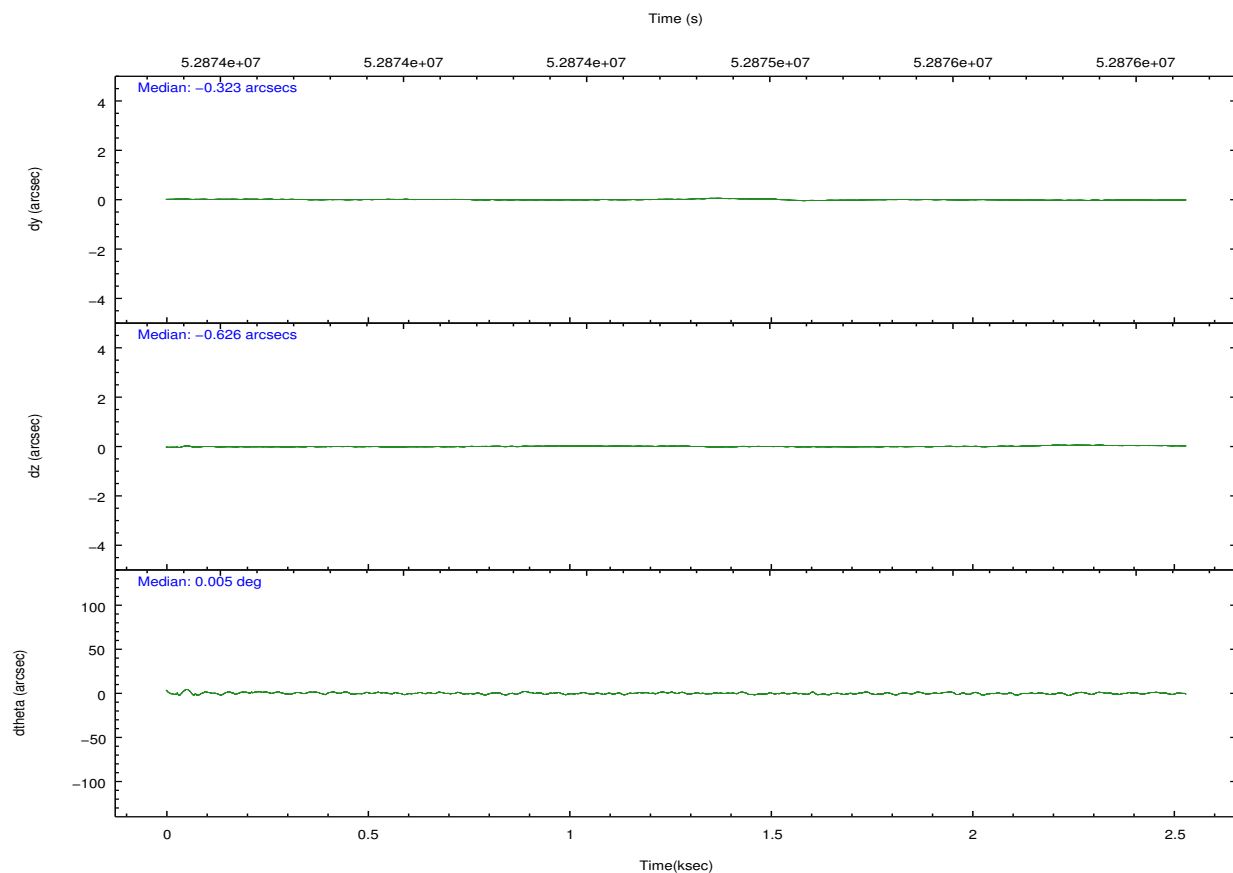
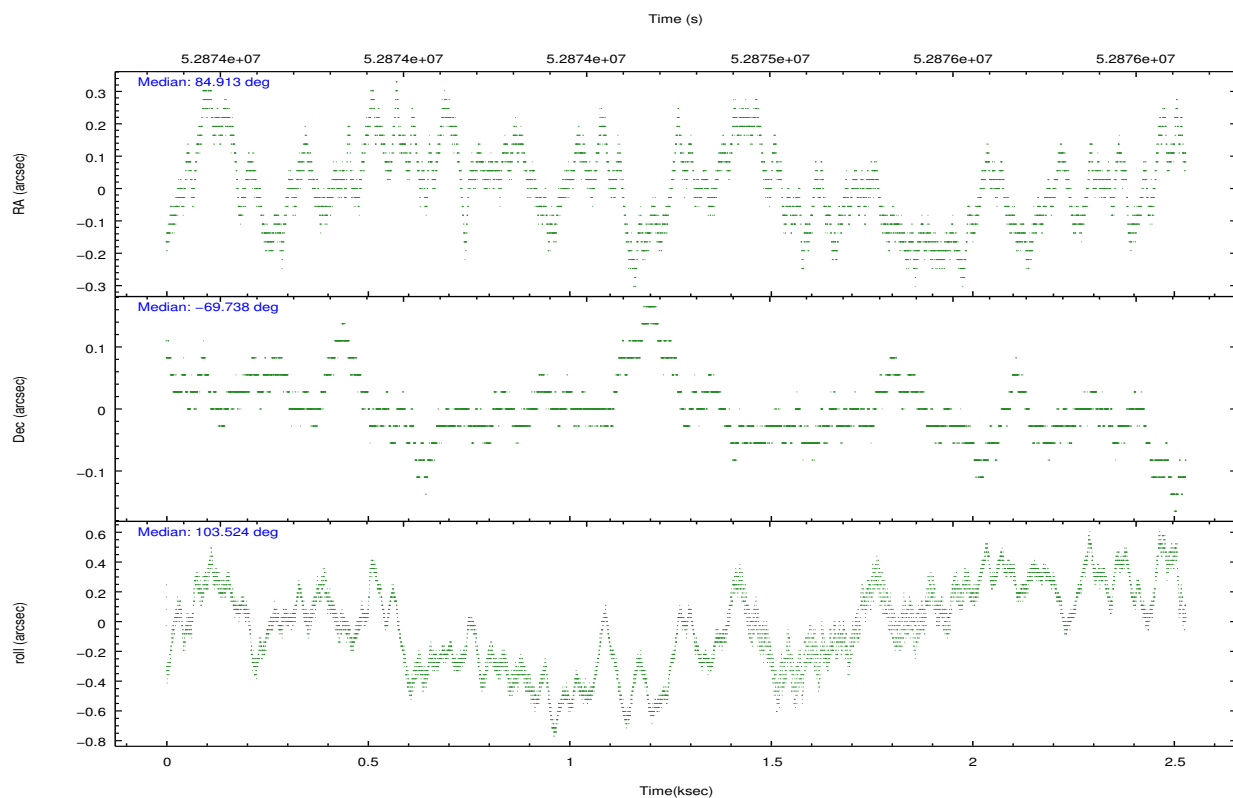
2.2 Compared Parameters

Parameter	Planned	Actual
Instrument	HRC	HRC
Detector	HRC-S	HRC-S
Grating	NONE	NONE
Data mode	OBSERVING	OBSERVING
Observation mode	POINTING	POINTING
Pointing RA	84.971636	84.9127079977418
Pointing Dec	-69.758744	-69.73822380272603
Pointing Roll	103.518059	103.530111931317
Window start time	52856164.184000	52856164.184000
Window stop time	52892164.184000	52892164.184000
SIM focus pos (mm)	-1.429586	-0.7765883295792845
SIM defocus (mm)	0.1037507710433287	0.7567483098250124
SIM translation stage pos (mm)	250.455976	250.466033080201
SIM translation stage offset (mm)	0	-0.01005468664627074
Observation start time	52856164.184000	52873477.137118
Observation start date	1999-09-04T18:15:00	1999-09-04T23:04:37
Observation end time	52892164.184000	52876010.937209
Observation end date	1999-09-05T04:15:00	1999-09-04T23:46:50

Parameter	Planned	Actual
Obspar format version number	6	6
Obspar file type	PREDICTED	ACTUAL
Obspar update status	NONE	UPDATED

2.3 Aspect



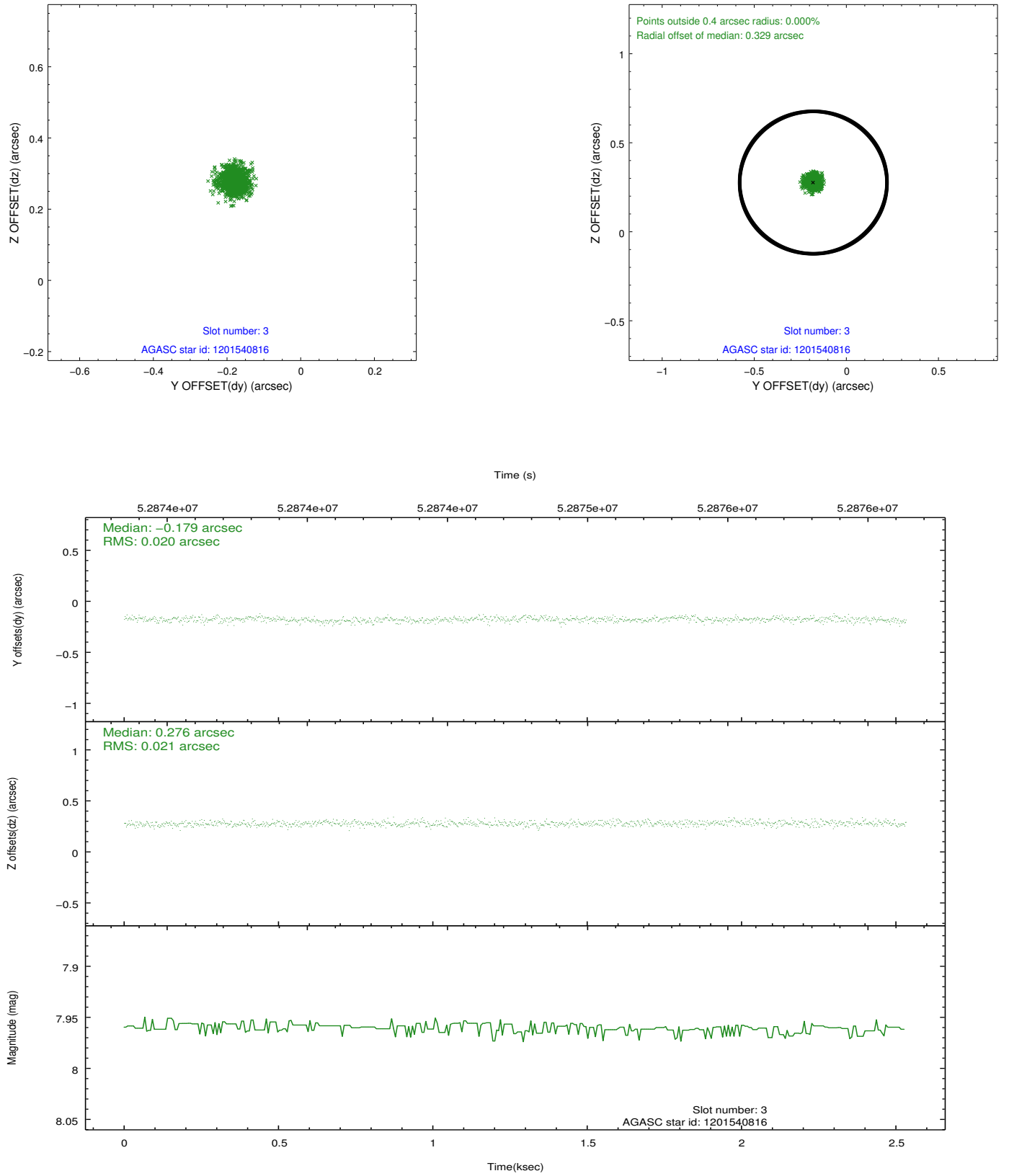


Slot Statistics

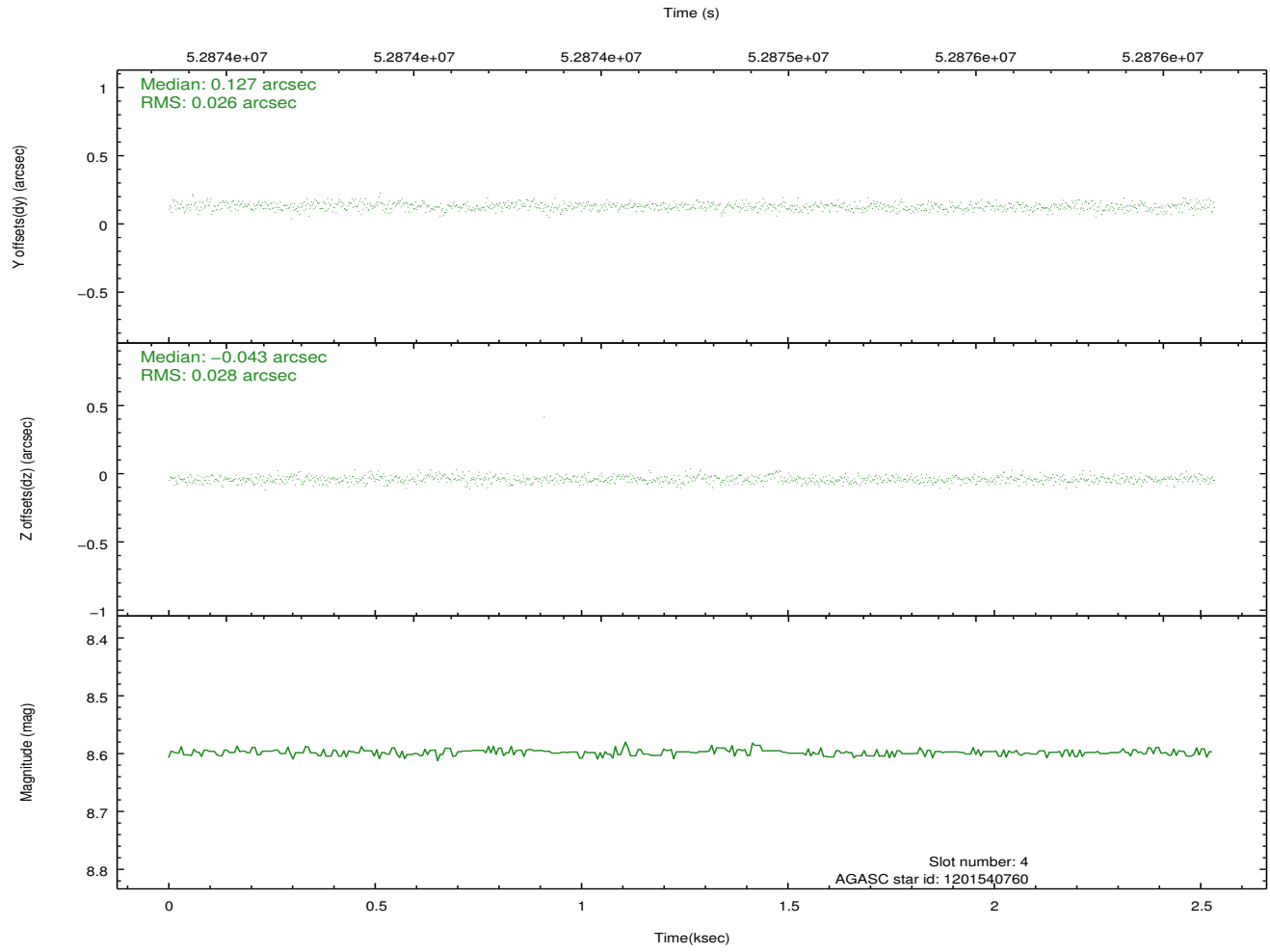
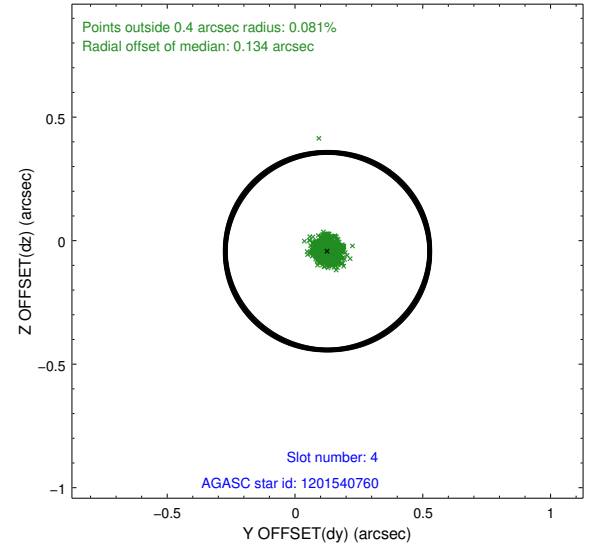
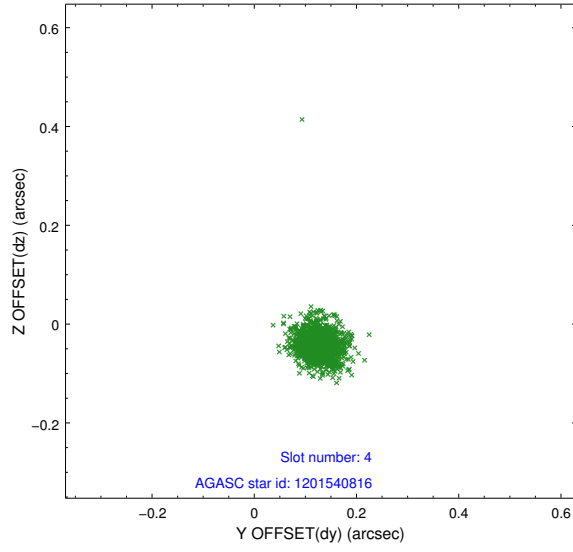
slot	status	id	mag	n_pts	med_dy	med_dz	dr1	dr2	ra	dec	mean_y	mean_z
0	FID	HRC-S-1	7.00	1236	0.152	-0.030	0.006	0.010	0.000000	0.000000	-1153.79	-447.47
1	FID	HRC-S-3	7.01	1236	0.093	-0.157	0.007	0.012	0.000000	0.000000	-1157.35	581.64
2	FID	HRC-S-4	6.99	1236	0.142	-0.110	0.005	0.008	0.000000	0.000000	1243.83	584.74
3	GUIDE	1201540816	7.96	1235	-0.179	0.276	0.031	0.051	86.998494	-69.749817	-599.63	-2451.88
4	GUIDE	1201540760	8.60	1236	0.127	-0.043	0.037	0.063	84.403691	-70.419249	-2155.37	1221.33
5	GUIDE	1201411368	10.05	1236	-0.163	-0.159	0.088	0.152	83.629696	-70.495613	-2221.70	2193.83
6	GUIDE	1200883536	9.87	1234	0.089	0.053	0.080	0.132	83.119228	-69.218429	2407.58	1856.87
7	GUIDE	1201020088	10.48	1234	0.126	-0.132	0.110	0.196	86.319248	-68.997756	2241.09	-2324.11

2.4 Star Slots

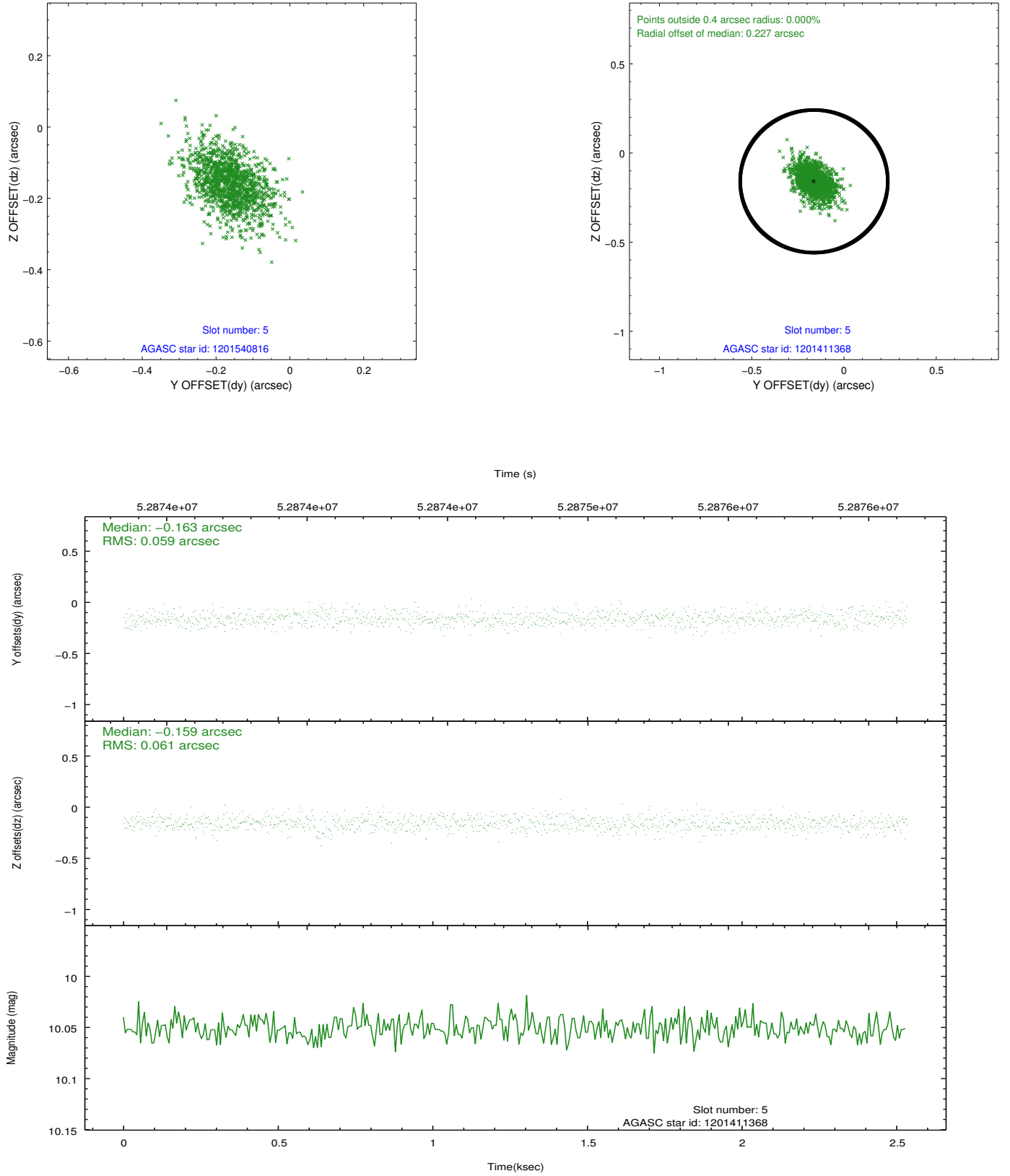
2.4.1 Slot 3



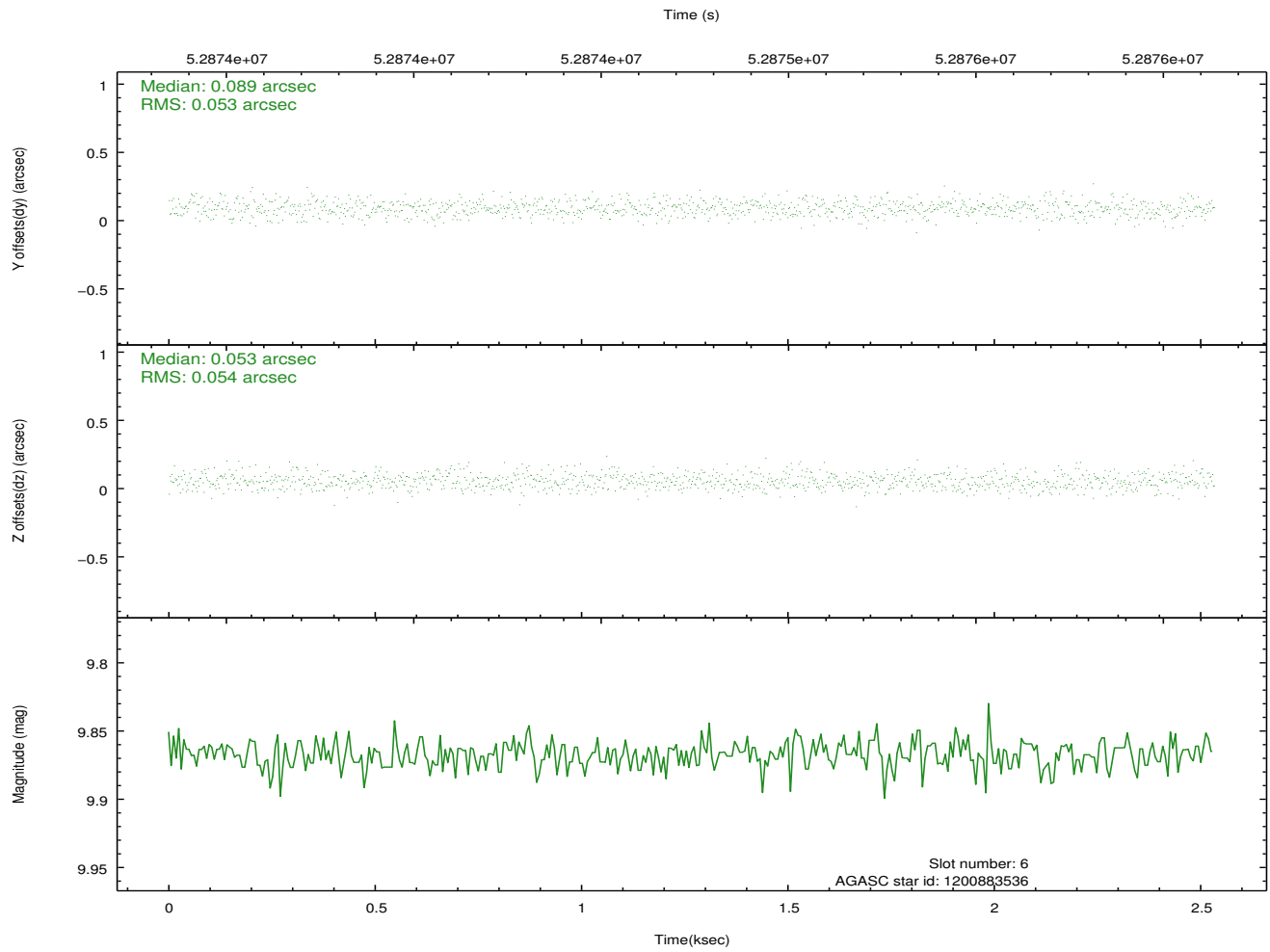
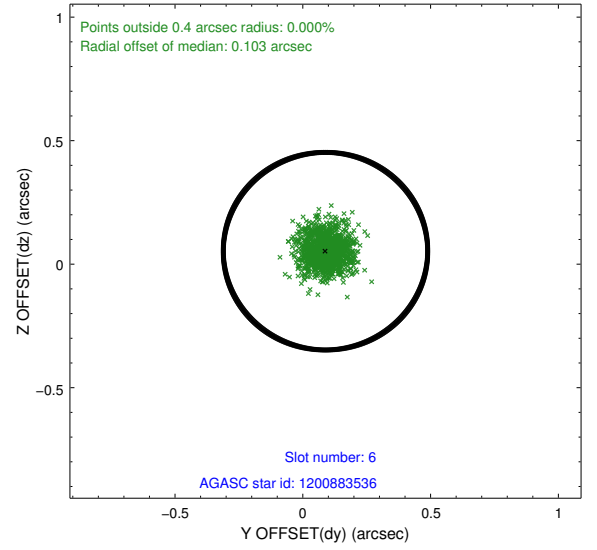
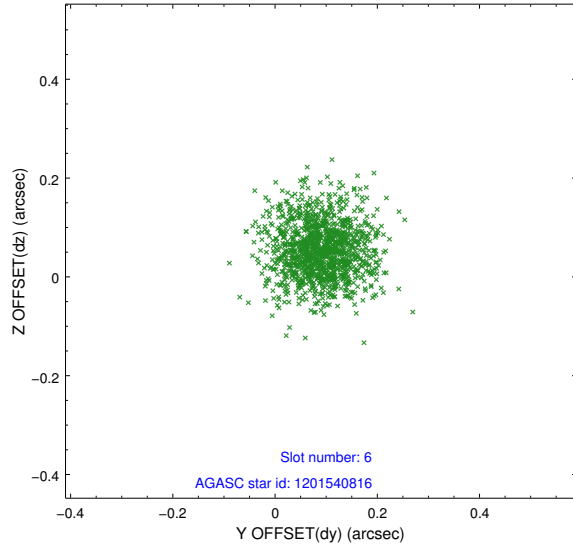
2.4.2 Slot 4



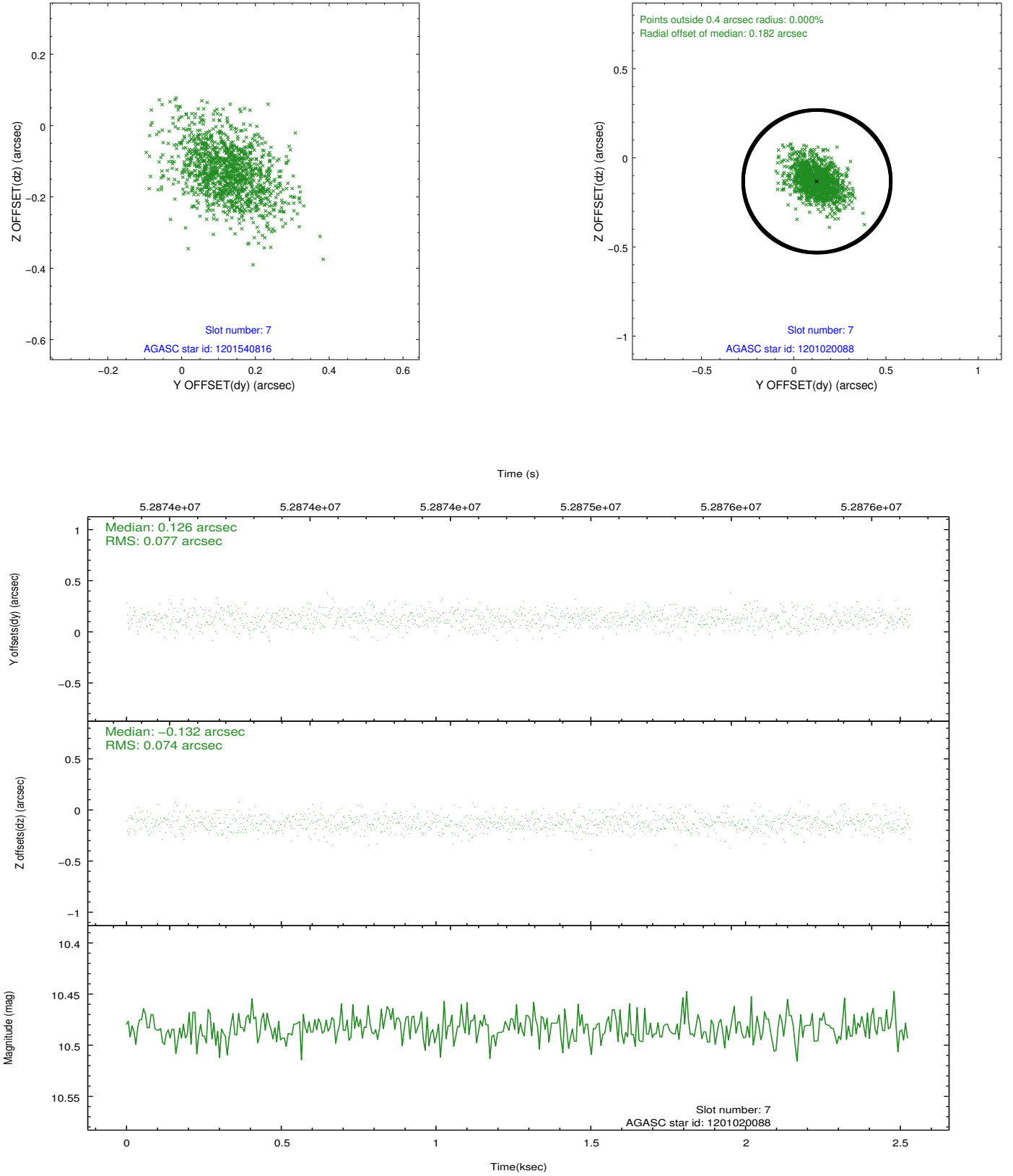
2.4.3 Slot 5



2.4.4 Slot 6

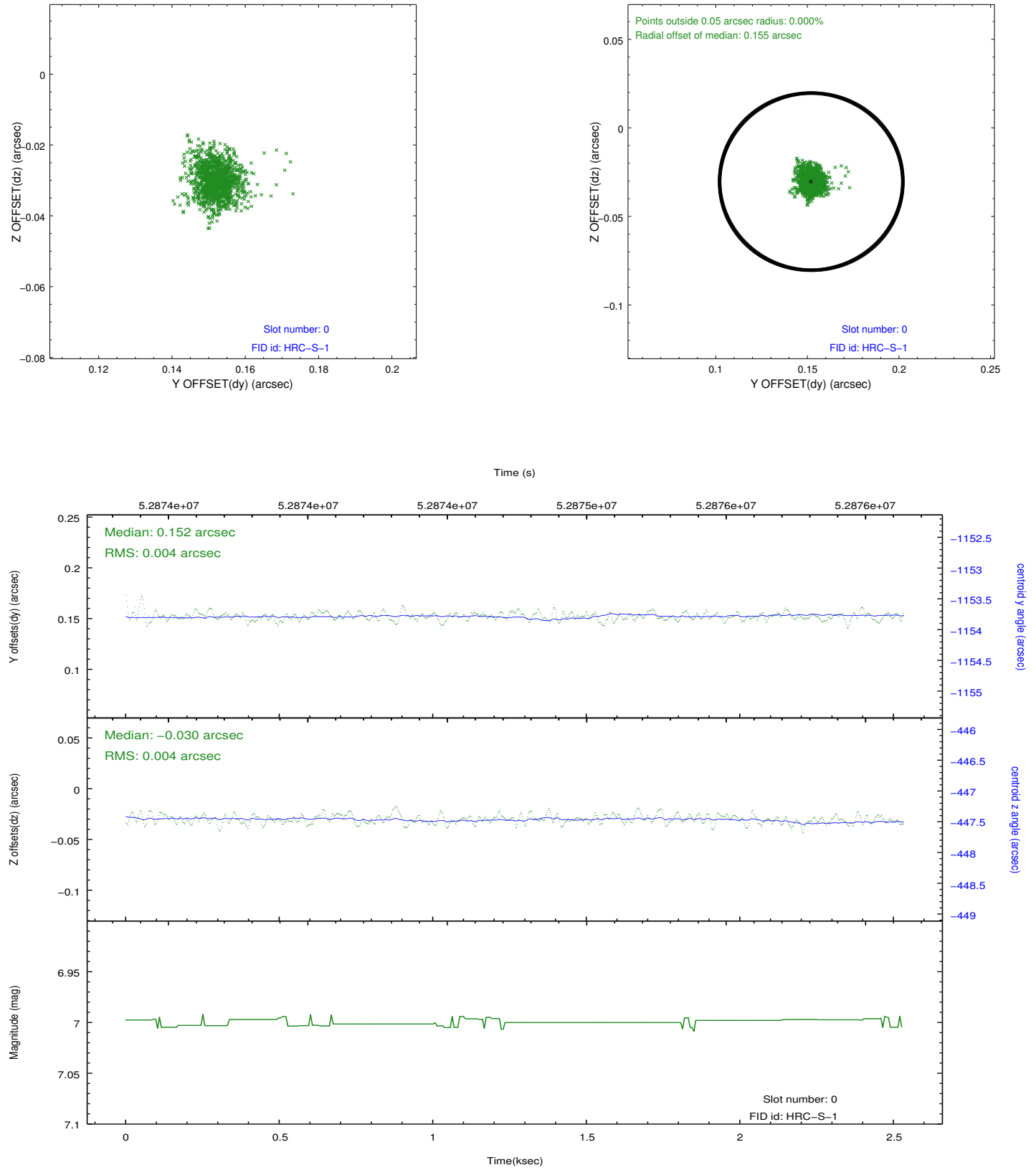


2.4.5 Slot 7

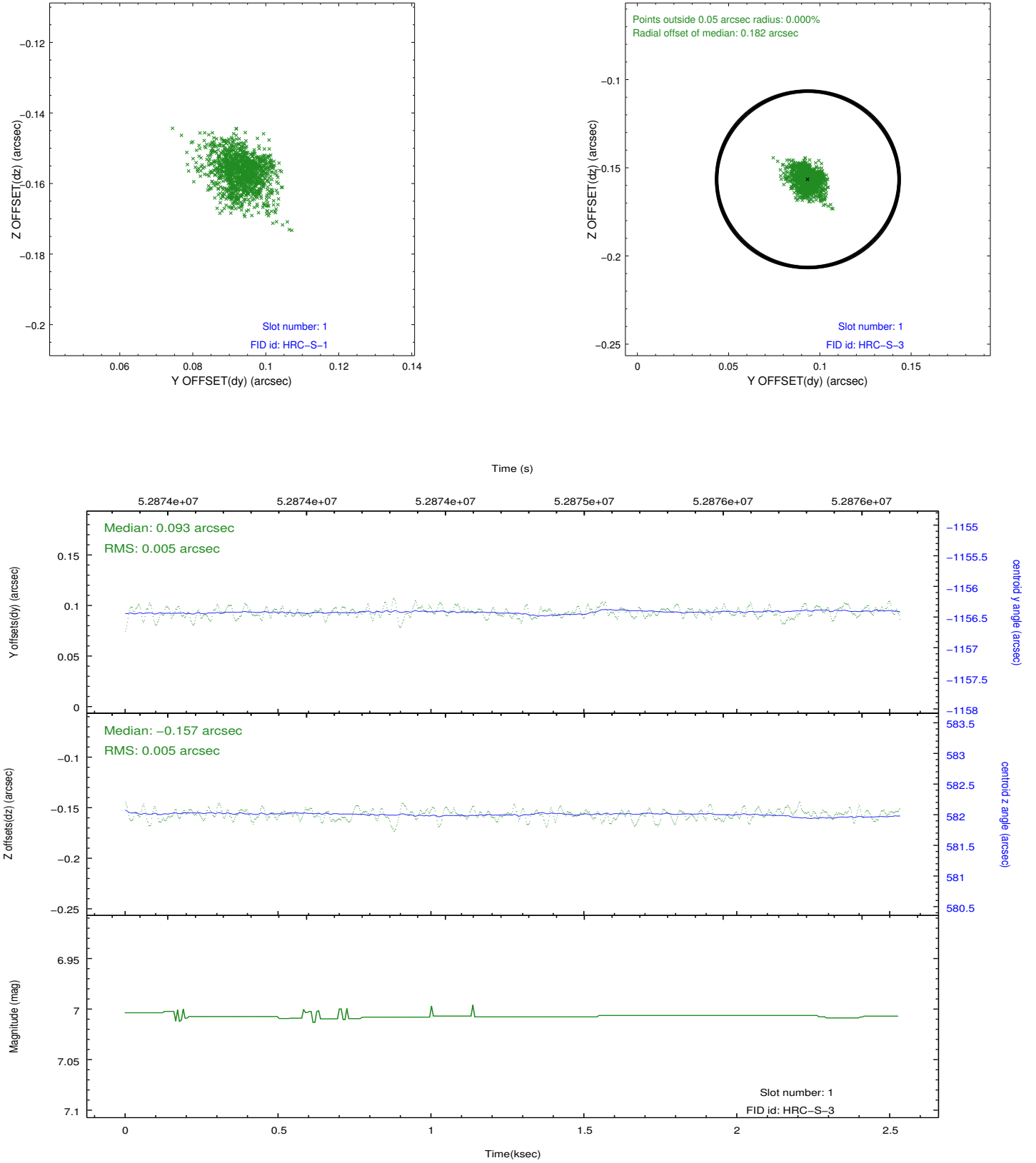


2.5 FID Slots

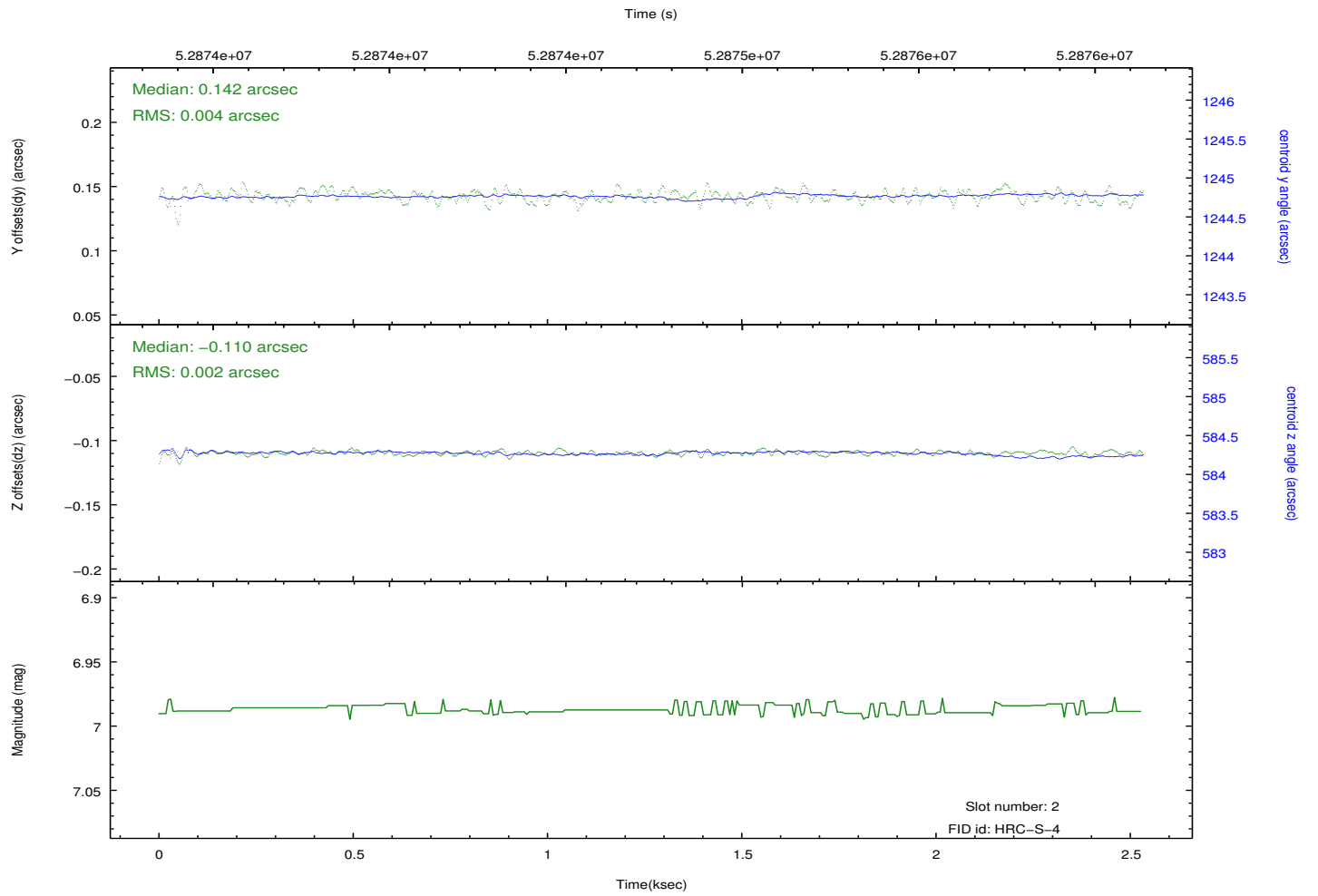
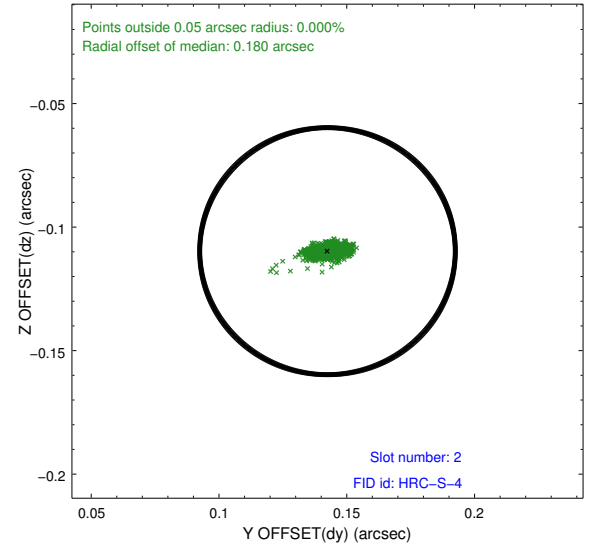
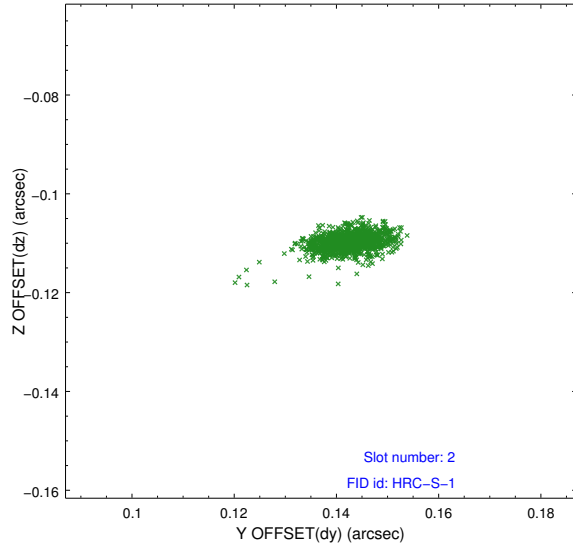
2.5.1 Slot 0



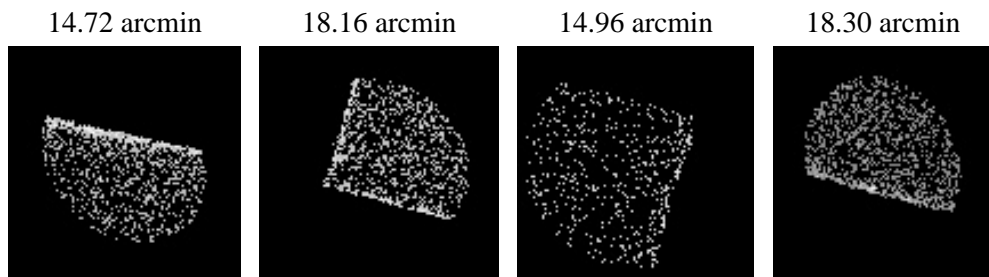
2.5.2 Slot 1



2.5.3 Slot 2



3 Point Sources



A Summary

A.1 Status

V&V Scientist	Beth Sundheim
V&V Date (YYYY-MM-DD)	2010.02.16
V&V Edition	1
V&V Disposition and Status	OK
V&V Charge Time	2.492

A.2 Comments

Window preference met.