

V&V Reference Report

L2 ASCDS Version : 8.1.2

Observation 62231 - L2 Version 4

Chandra X-Ray Center

L2 Processing Date : Dec 2 2009

Contents

1	Front	2
2	OBI	3
2.1	OBI	3
2.1.1	Images	3
2.1.2	Bias	3
2.1.3	Parameters	4
2.1.4	Events	4
2.2	Compared Parameters	5
2.3	Star Slots	6
2.4	FID Slots	6
A	Summary	7
A.1	Status	7
A.2	Comments	7

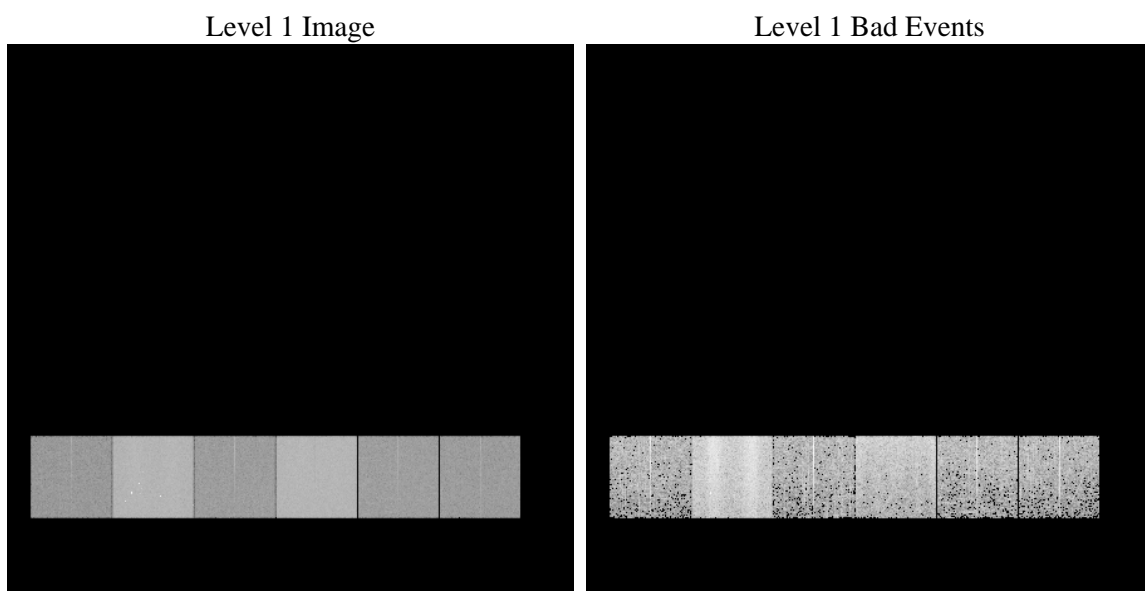
1 Front

seq_num	 	Sequence number
obs_id	62231	Observation id
title	ACIS-456789 diagnostics	Proposal title
observer	CHANDRA engineering request/realtime commanding	Principal investig
object	 	Source name
dtcycle	0	
cycle	P	events from which exps? Prim/Second/Both
ra_targ	0.0	Observer's specified target RA
dec_targ	0.0	Observer's specified target Dec
ra_nom	23.364575321188	Nominal RA
dec_nom	30.537479102756	Nominal Dec
roll_nom	288.47285743686	Nominal Roll
revision	4	Processing version of data
ontime	2930.2269825712	Sum of GTIs [s]
livetime	2893.122684147	Livetime [s]
ontime4	1117.3148217574	Sum of GTIs [s]
ontime5	3118.2039615288	Sum of GTIs [s]
ontime6	1224.2281019688	Sum of GTIs [s]
ontime7	2930.2269825712	Sum of GTIs [s]
ontime8	1261.0986602604	Sum of GTIs [s]
ontime9	1211.1408219412	Sum of GTIs [s]
l2events	903469	Number of level 2 events

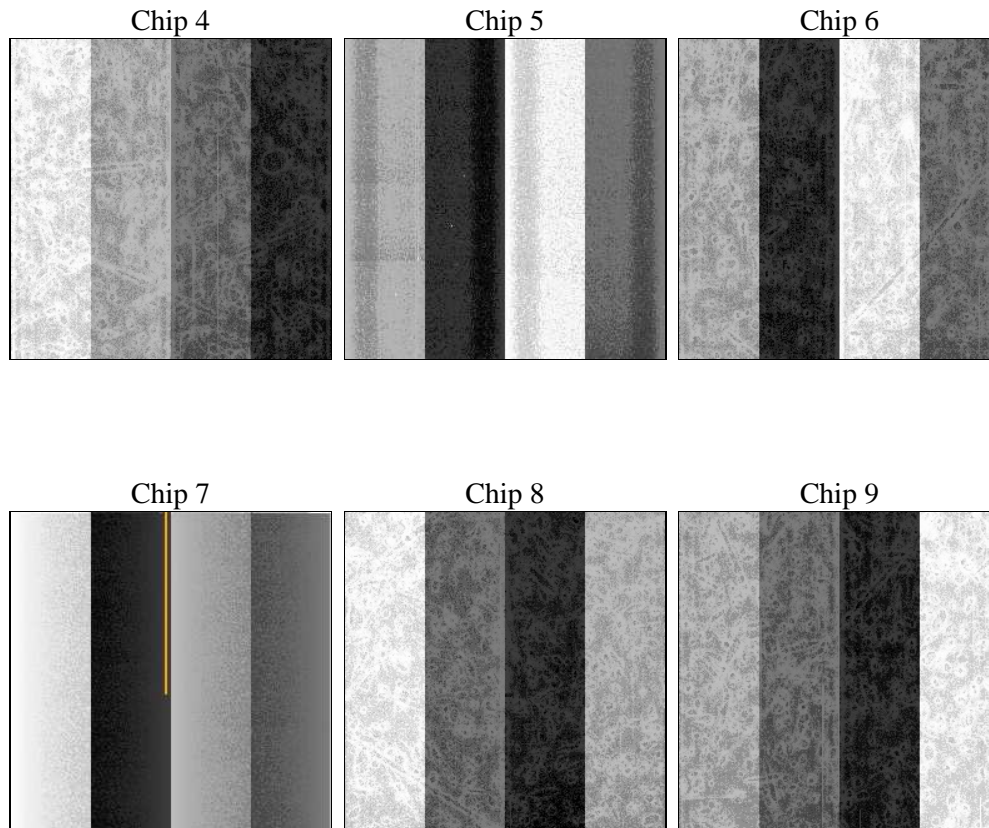
2 OBI

2.1 OBI

2.1.1 Images



2.1.2 Bias



2.1.3 Parameters

obi_num	0	Obi number		
ascdsver	8.1.2	ASCDS version number	sched_exp_time	0.0
caldsver	4.1.4	 		Scheduled observation exposure time
date	2009-12-02T20:46:27	Date and time of file creation	ontime	2930.2269825712
revision	3	Processing version of data	ontime4	1117.3148217574
			ontime5	3118.2039615288
			ontime6	1224.2281019688
			ontime7	2930.2269825712
			ontime8	1261.0986602604
			ontime9	1211.1408219412
			l1events	1061773
				Number of level 1 events

2.1.4 Events

	ccd 4	ccd 5	ccd 6	ccd 7	ccd 8	ccd 9		ccd 4	ccd 5	ccd 6	ccd 7	ccd 8	ccd 9
level 1 events	106429	289061	124007	294000	129725	118551	grade 0 events	20464	28161	29789	48971	39141	31484
rejected events	17159	46710	17999	28184	18373	16925		19%	9%	24%	16%	30%	26%
rejected %	16%	16%	14%	9%	14%	14%	grade 1 events	79	100	105	107	163	120
								0%	0%	0%	0%	0%	0%
							grade 2 events	48131	94186	49476	74793	44577	44821
								45%	32%	39%	25%	34%	37%
							grade 3 events	2026	13005	2991	22956	4125	3253
								1%	4%	2%	7%	3%	2%
							grade 4 events	2072	11106	3061	20713	4037	3210
								1%	3%	2%	7%	3%	2%
							grade 5 events	910	4902	1013	3955	1148	1003
								0%	1%	0%	1%	0%	0%
							grade 6 events	16577	96290	20691	98651	19761	18858
								15%	33%	16%	33%	15%	15%
							grade 7 events	16170	41311	16881	23854	16773	15802
								15%	14%	13%	8%	12%	13%

2.2 Compared Parameters

Parameter	Planned	Actual	Parameter	Planned	Actual
Instrument	ACIS	ACIS	Obspar format version number	6	6
Detector	ACIS-456789	ACIS-456789	Obspar file type	PREDICTED	ACTUAL
Grating	NONE	NONE	Obspar update status	NONE	UPDATED
Data mode	FAINT	FAINT	On-chip summing requested	N	N
Observation mode	SECONDARY	SECONDARY	Subarray requested	NONE	NONE
Pointing RA	0	23.36457532118779	Alternating exposures requested	N	N
Pointing Dec	0	30.53747910275634	Primary exposure time	0.000000	3.2
Pointing Roll	0.0	288.4728574368622			
SIM focus pos (mm)	-0.684267	-0.6828225247311905			
SIM defocus (mm)	0	0.8505141146731063			
SIM translation stage pos (mm)	-190.132523	250.466033080201			
SIM translation stage offset (mm)	0	-0.01005468664627074			
Observation start time	63958029.211	63958028.442533			
Observation start date	2000-01-11T06:07:09	2000-01-11T06:07:08			
Observation end time	64002569.563	64002568.794151			
Observation end date	2000-01-11T18:29:30	2000-01-11T18:29:28			
Read mode	TIMED	TIMED			

2.3 Star Slots

2.4 FID Slots

A Summary

A.1 Status

V&V Scientist	Beth Sundheim
V&V Date (YYYY-MM-DD)	2010.01.27
V&V Edition	1
V&V Disposition and Status	OK
V&V Charge Time	2.9302269825712

A.2 Comments

The focal plane temperature is approximately -110C during this observation. This reprocessing of the data applies no CTI correction because none is available for this temperature at present.

The ACIS CTI correction has not been calibrated at this temperature, because it was early in the mission, and ACIS had not yet been lowered to the standard -119.7 C. Both front and back illuminated chips are affected. However a T_GAIN correction has been applied to the BI chips (ACIS-5 and ACIS-7) data included here.