

# V&V Reference Report

## L2 ASCDS Version : 8.4.5

Observation 61761 - L2 Version 4  
Chandra X-Ray Center

L2 Processing Date : Sep 7 2012

## Contents

<b>1</b>	<b>Front</b>	<b>2</b>
<b>2</b>	<b>OBI</b>	<b>3</b>
2.1	OBI . . . . .	3
2.1.1	Images . . . . .	3
2.1.2	Bias . . . . .	3
2.1.3	Parameters . . . . .	4
2.1.4	Events . . . . .	4
2.2	Compared Parameters . . . . .	5
2.3	Star Slots . . . . .	6
2.4	FID Slots . . . . .	6
<b>A</b>	<b>Summary</b>	<b>7</b>
A.1	Status . . . . .	7
A.2	Comments . . . . .	7

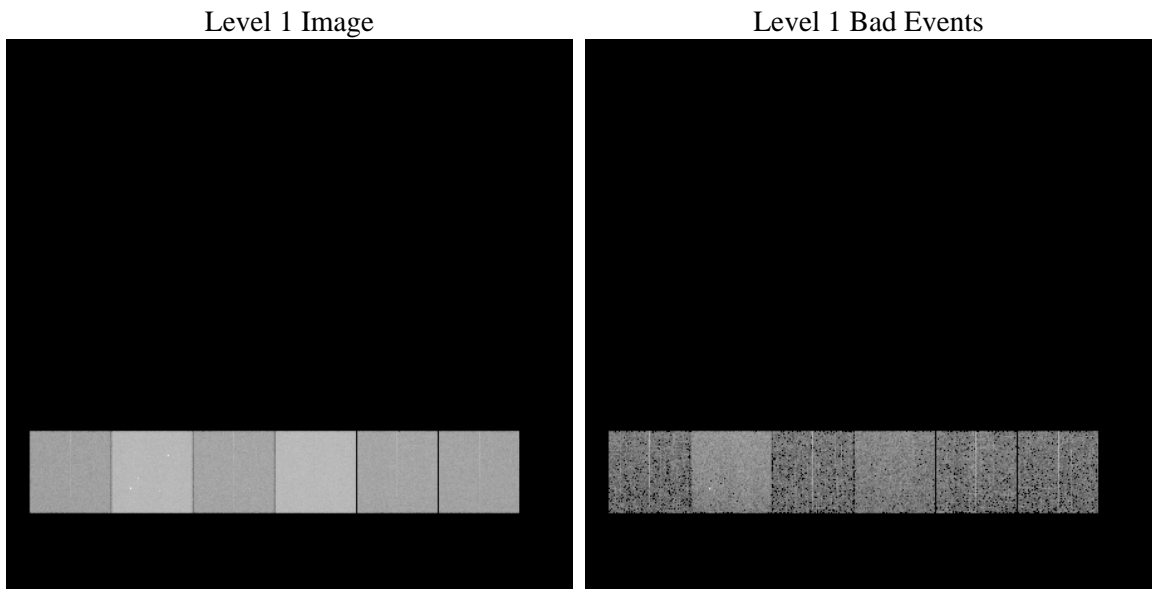
# 1 Front

seq_num	&#160	Sequence number
obs_id	61761	Observation id
title	ACIS-456789 diagnostics	Proposal title
observer	CHANDRA engineering request/realtime commanding	Principal investig
object	&#160	Source name
dtcycle	0	&#160
cycle	P	events from which exps? Prim/Second/Both
ra_targ	0.0	Observer's specified target RA [deg]
dec_targ	0.0	Observer's specified target Dec [deg]
ra_nom	340.03150950615	Nominal RA [deg]
dec_nom	24.997310899279	Nominal Dec [deg]
roll_nom	322.01416385611	Nominal Roll [deg]
revision	4	Processing version of data
ontime	4899.6826533973	Sum of GTIs [s]
livetime	4837.6399214053	Livetime [s]
ontime4	2041.8532405496	Sum of GTIs [s]
ontime5	5226.9788962007	Sum of GTIs [s]
ontime6	2249.2796405107	Sum of GTIs [s]
ontime7	4899.6826533973	Sum of GTIs [s]
ontime8	2232.1725499034	Sum of GTIs [s]
ontime9	2171.4946906418	Sum of GTIs [s]
l2events	1247199	Number of level 2 events

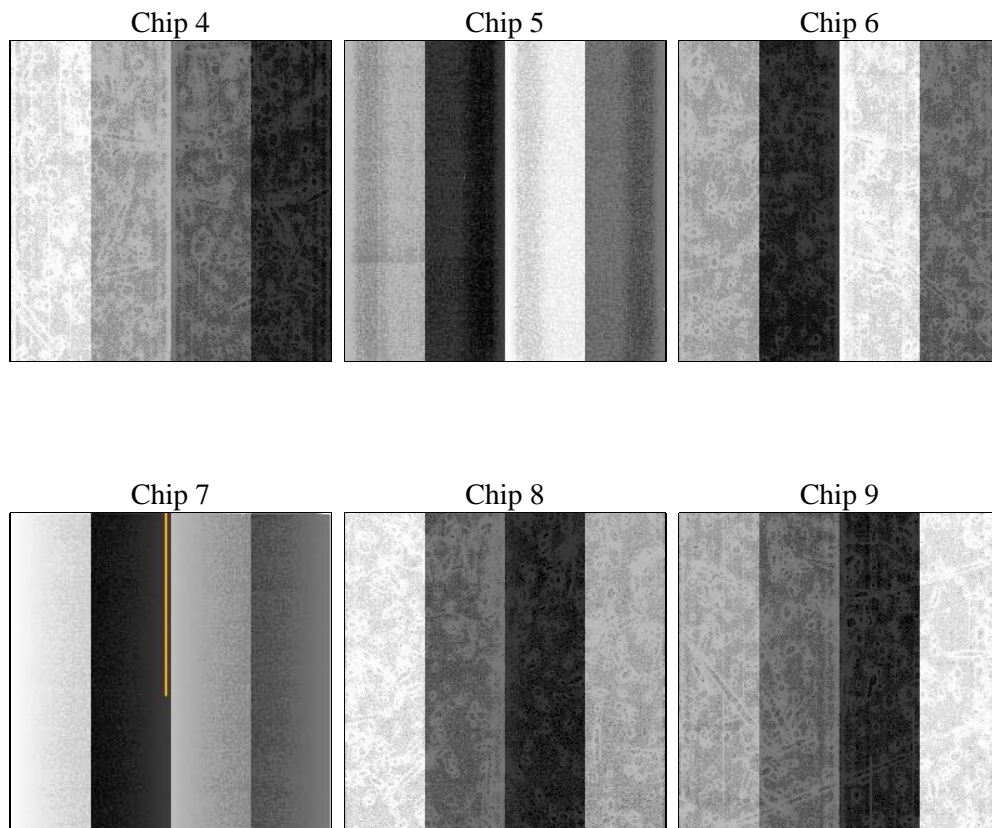
## 2 OBI

### 2.1 OBI

#### 2.1.1 Images



#### 2.1.2 Bias



### 2.1.3 Parameters

obi_num	0	Obi number	sched_exp_time	0.0	[s] Scheduled observation exposure time
ascdsver	8.4.5	Processing system revision	ontime	4899.6826533973	Sum of GTIs [s]
caldsver	4.5.1.1	&#160	ontime4	2041.8532405496	Sum of GTIs [s]
date	2012-09-07T06:23:39	Date and time of file creation	ontime5	5226.9788962007	Sum of GTIs [s]
revision	4	Processing version of data	ontime6	2249.2796405107	Sum of GTIs [s]
			ontime7	4899.6826533973	Sum of GTIs [s]
			ontime8	2232.1725499034	Sum of GTIs [s]
			ontime9	2171.4946906418	Sum of GTIs [s]
			l1events	1429471	Number of level 1 events

### 2.1.4 Events

	ccd 4	ccd 5	ccd 6	ccd 7	ccd 8	ccd 9		ccd 4	ccd 5	ccd 6	ccd 7	ccd 8	ccd 9
level 1 events	155307	364211	182411	375116	182804	169622	grade 0 events	78849	84198	91327	91039	90964	84312
rejected events	16037	35965	16273	23226	18499	16195		50%	23%	50%	24%	49%	49%
rejected %	10%	9%	8%	6%	10%	9%	grade 1 events	413	632	456	246	439	399
								0%	0%	0%	0%	0%	0%
							grade 2 events	24525	114699	28761	77786	28896	26897
								15%	31%	15%	20%	15%	15%
							grade 3 events	8700	22098	10474	36113	10180	9434
								5%	6%	5%	9%	5%	5%
							grade 4 events	8481	21792	10068	35674	10266	9478
								5%	5%	5%	9%	5%	5%
							grade 5 events	1100	7278	1381	5295	1453	1336
								0%	1%	0%	1%	0%	0%
							grade 6 events	18715	85459	25508	111278	23999	23306
								12%	23%	13%	29%	13%	13%
							grade 7 events	14524	28055	14436	17685	16607	14460
								9%	7%	7%	4%	9%	8%

## 2.2 Compared Parameters

Parameter	Planned	Actual	Parameter	Planned	Actual
Instrument	ACIS	ACIS	Obspar format version number	7	7
Detector	ACIS-456789	ACIS-456789	Obspar file type	PREDICTED	ACTUAL
Grating	NONE	NONE	Obspar update status	NONE	UPDATED
Data mode	FAINT	FAINT	On-chip summing requested	N	N
Observation mode	SECONDARY	SECONDARY	Subarray requested	NONE	NONE
[deg] Pointing RA	0	340.0315095061508	Alternating exposures requested	N	N
[deg] Pointing Dec	0	24.99731089927863	[s] Primary exposure time	3.2	3.2
[deg] Pointing Roll	0.0	322.0141638561051			
[mm] SIM focus pos	-0.684267	-0.7809083437167272			
[mm] SIM defocus	0	0.7524282956875696			
[mm] SIM translation stage pos	-190.132523	250.466033080201			
[mm] SIM translation stage offset	0	-0.01005468664627074			
[s] Observation start time (MET)	96856576.040243	96856575.271779			
Observation start date	2001-01-26T00:36:16	2001-01-26T00:36:15			
[s] Observation end time (MET)	96868709.99070799	96868709.22224601			
Observation end date	2001-01-26T03:58:30	2001-01-26T03:58:29			
Read mode	TIMED	TIMED			

## 2.3 Star Slots

## 2.4 FID Slots

## A Summary

### A.1 Status

V&V Scientist	Jen Lauer
V&V Date (YYYY-MM-DD)	2012.09.17
V&V Edition	1
V&V Disposition and Status	OK
V&V Charge Time	4.8996826533973

### A.2 Comments