

V&V Reference Report

L2 ASCDS Version : 7.6.9

Observation 61751 - L2 Version 001
Chandra X-Ray Center

L2 Processing Date : Nov 6 2006

Contents

1	Front	2
2	OBI	3
2.1	OBI	3
2.1.1	Images	3
2.1.2	Bias	3
2.1.3	Parameters	4
2.1.4	Events	4
2.2	Compared Parameters	5
2.3	Aspect	6
2.4	Star Slots	8
2.5	FID Slots	8
A	Summary	9
A.1	Status	9
A.2	Comments	9

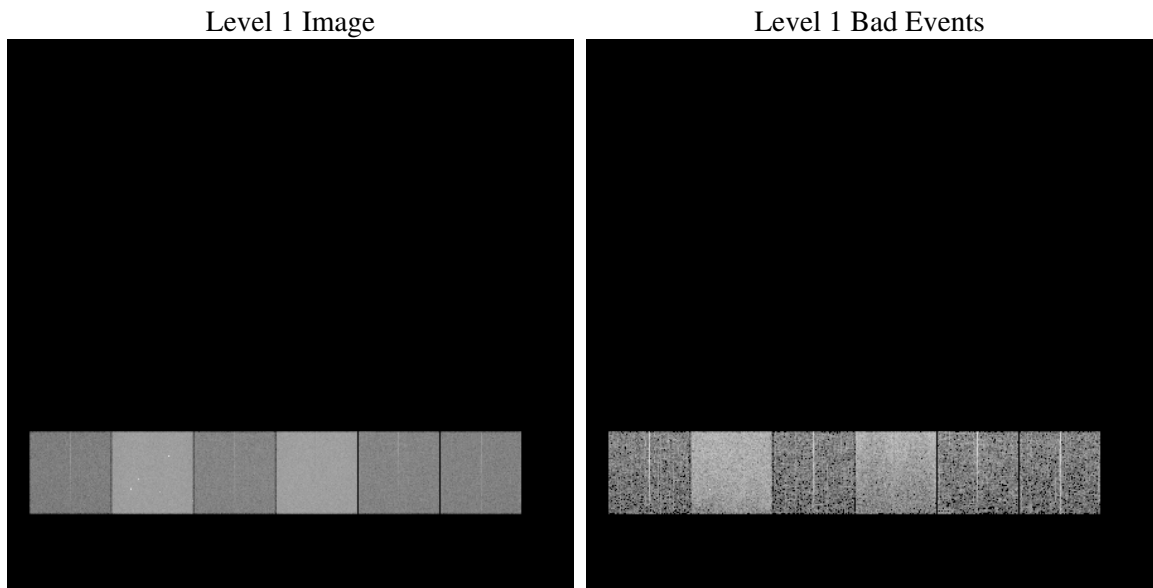
1 Front

seq_num	
obs_id	61751
title	ACIS-456789 diagnostics
observer	CHANDRA engineering request/realtime commanding
object	
dtcycle	0
cycle	P
ra_targ	0.0
dec_targ	0.0
ra_nom	166.01000774463
dec_nom	-19.972860365963
roll_nom	38.243225644596
revision	3
ontime	4949.403854534
livetime	4886.7315227547
ontime4	2006.6916773915
ontime5	5299.4690006971
ontime6	2226.8184160888
ontime7	4949.403854534
ontime8	2227.1230780184
ontime9	2155.6153270751
l2events	1218333

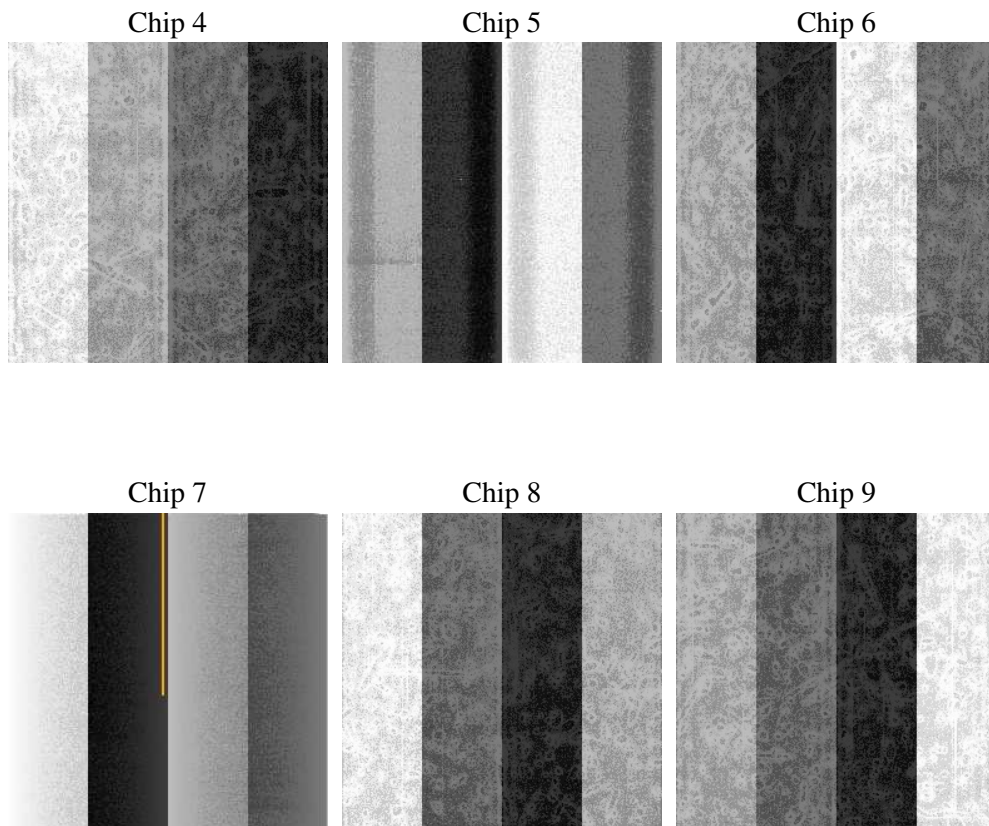
2 OBI

2.1 OBI

2.1.1 Images



2.1.2 Bias



2.1.3 Parameters

obi_num	0
ascdsver	7.6.9
caldsver	3.2.3
date	2006-11-06T20:16:25
revision	3

sched_exp_time	0.0
ontime	4952.2782477736
ontime4	2009.4429506361
ontime5	5302.3023539335
ontime6	2229.8334906846
ontime7	4952.2782477736
ontime8	2229.8333112597
ontime9	2158.530760318
l1events	1426282

2.1.4 Events

	ccd 4	ccd 5	ccd 6	ccd 7	ccd 8	ccd 9
level 1 events	151990	368096	179883	377725	180538	168050
rejected events	17421	46329	17275	35999	18871	16855
rejected %	11%	12%	9%	9%	10%	10%

	ccd 4	ccd 5	ccd 6	ccd 7	ccd 8	ccd 9
grade 0 events	76902	44490	89007	66028	89601	83205
	50%	12%	49%	17%	49%	49%
grade 1 events	396	178	399	174	458	411
	0%	0%	0%	0%	0%	0%
grade 2 events	23716	152729	28181	101110	28419	26832
	15%	41%	15%	26%	15%	15%
grade 3 events	8176	11857	10207	26762	10211	9430
	5%	3%	5%	7%	5%	5%
grade 4 events	8185	11524	10171	26108	10246	9395
	5%	3%	5%	6%	5%	5%
grade 5 events	1166	5654	1384	5248	1484	1324
	0%	1%	0%	1%	0%	0%
grade 6 events	17846	101362	25287	121934	23395	22565
	11%	27%	14%	32%	12%	13%
grade 7 events	15603	40302	15247	30361	16724	14888
	10%	10%	8%	8%	9%	8%

2.2 Compared Parameters

Parameter	Planned	Actual	Parameter	Planned	Actual
Instrument	ACIS	ACIS	Obspar format version number	6	6
Detector	ACIS-456789	ACIS-456789	Obspar file type	PREDICTED	ACTUAL
Grating	NONE	NONE	Obspar update status	NONE	UPDATED
Data mode	FAINT	FAINT	On-chip summing requested	N	N
Observation mode	SECONDARY	SECONDARY	Subarray requested	NONE	NONE
Pointing RA	0	166.0100077446321	Alternating exposures requested	N	N
Pointing Dec	0	-19.97286036596288	Primary exposure time	0.000000	3.2
Pointing Roll	0.0	38.24322564459565			
SIM focus pos (mm)	-0.684267	-0.6828225247311905			
SIM defocus (mm)	0	0.8505141146731063			
SIM translation stage pos (mm)	-190.132523	250.466033080201			
SIM translation stage offset (mm)	0	-0.01005468664627074			
Observation start time	97770625.97499999	97770625.20697799			
Observation start date	2001-02-05T14:30:26	2001-02-05T14:30:25			
Observation end time	97782069.07600001	97782068.307419			
Observation end date	2001-02-05T17:41:09	2001-02-05T17:41:08			
Read mode	TIMED	TIMED			

2.3 Aspect

2.4 Star Slots

2.5 FID Slots

A Summary

A.1 Status

V&V Scientist	Jen Lauer
V&V Date (YYYY-MM-DD)	2006.11.07
V&V Edition	1
V&V Disposition and Status	OK
V&V Charge Time	4.94940385

A.2 Comments