

V&V Reference Report

L2 ASCDS Version : 8.4.5

Observation 61731 - L2 Version 3
Chandra X-Ray Center

L2 Processing Date : Sep 16 2012

Contents

1	Front	2
2	OBI	3
2.1	OBI	3
2.1.1	Images	3
2.1.2	Bias	3
2.1.3	Parameters	4
2.1.4	Events	4
2.2	Compared Parameters	5
2.3	Star Slots	6
2.4	FID Slots	6
A	Summary	7
A.1	Status	7
A.2	Comments	7

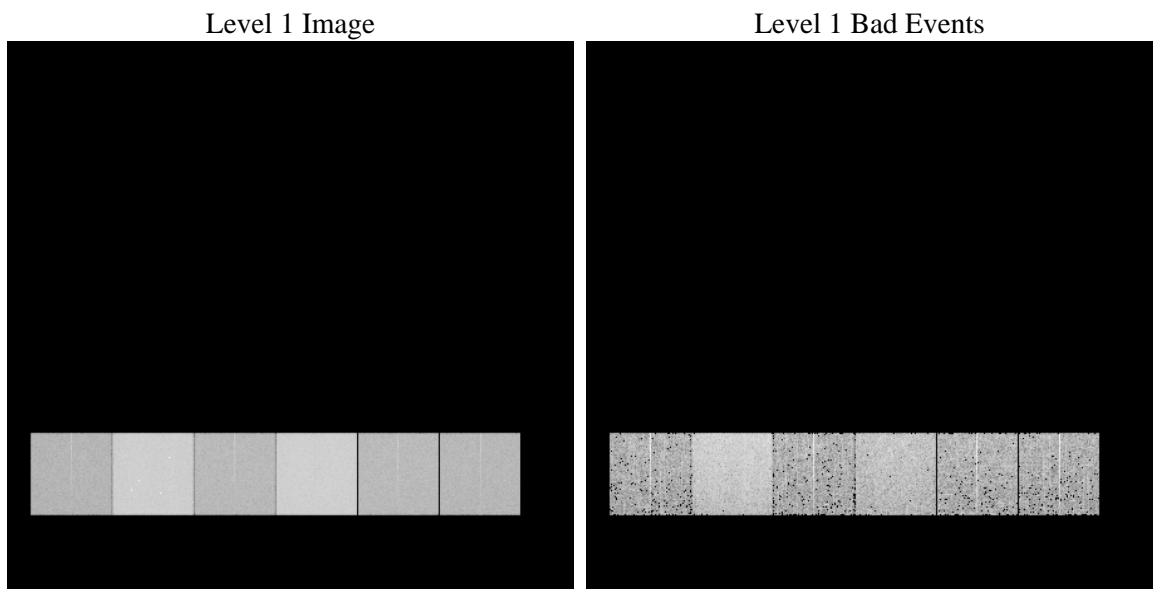
1 Front

seq_num	 	Sequence number
obs_id	61731	Observation id
title	ACIS-456789 diagnostics	Proposal title
observer	CHANDRA engineering request/realtime commanding	Principal investig
object	 	Source name
dtcycle	0	
cycle	P	events from which exps? Prim/Second/Both
ra_targ	0.0	Observer's specified target RA [deg]
dec_targ	0.0	Observer's specified target Dec [deg]
ra_nom	46.790378371724	Nominal RA [deg]
dec_nom	54.073807883853	Nominal Dec [deg]
roll_nom	289.46140527195	Nominal Roll [deg]
revision	3	Processing version of data
ontime	5428.7049604952	Sum of GTIs [s]
livetime	5359.9634295118	Livetime [s]
ontime4	2145.5665102899	Sum of GTIs [s]
ontime5	5843.5472029746	Sum of GTIs [s]
ontime6	2386.7944104522	Sum of GTIs [s]
ontime7	5428.7049604952	Sum of GTIs [s]
ontime8	2411.331630066	Sum of GTIs [s]
ontime9	2297.8953998983	Sum of GTIs [s]
l2events	1331332	Number of level 2 events

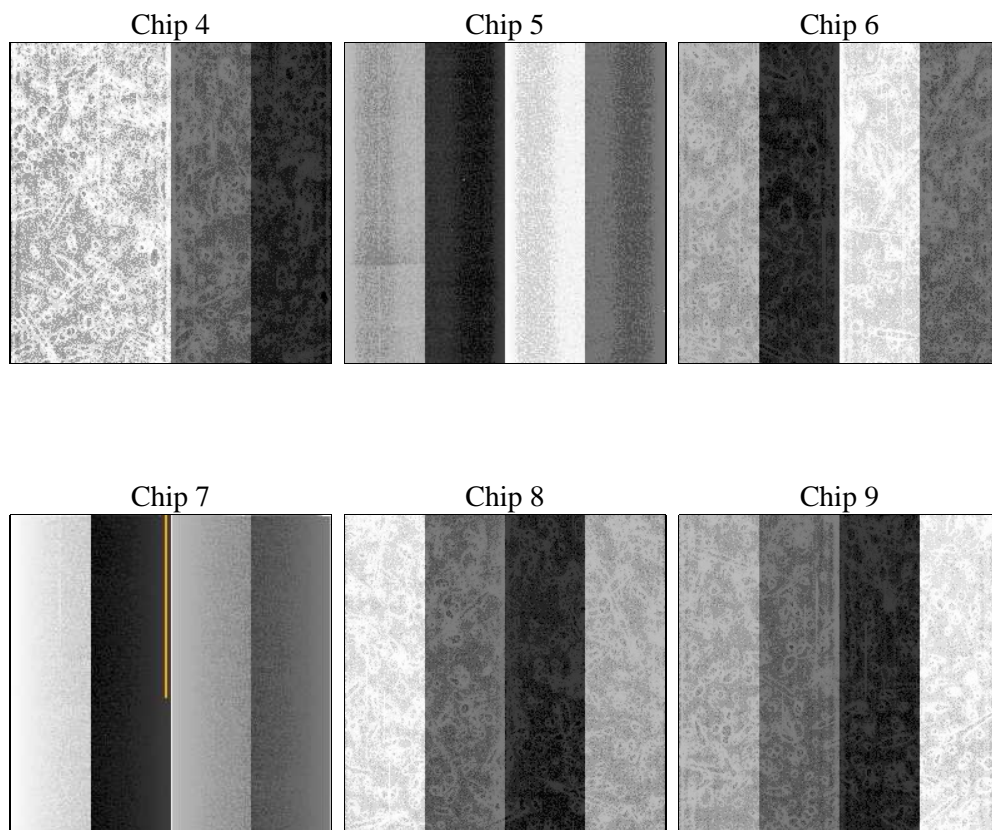
2 OBI

2.1 OBI

2.1.1 Images



2.1.2 Bias



2.1.3 Parameters

obi_num	0	Obi number	sched_exp_time	0.0	[s] Scheduled observation exposure time
ascdsver	8.4.5	Processing system revision	ontime	5428.7049604952	Sum of GTIs [s]
caldsver	4.5.1.1	 	ontime4	2145.5665102899	Sum of GTIs [s]
date	2012-09-16T12:18:18	Date and time of file creation	ontime5	5843.5472029746	Sum of GTIs [s]
revision	3	Processing version of data	ontime6	2386.7944104522	Sum of GTIs [s]
			ontime7	5428.7049604952	Sum of GTIs [s]
			ontime8	2411.331630066	Sum of GTIs [s]
			ontime9	2297.8953998983	Sum of GTIs [s]
			l1events	1546563	Number of level 1 events

2.1.4 Events

	ccd 4	ccd 5	ccd 6	ccd 7	ccd 8	ccd 9		ccd 4	ccd 5	ccd 6	ccd 7	ccd 8	ccd 9
level 1 events	162682	403237	191408	415472	195531	178233	grade 0 events	81637	89582	94313	98510	96658	87760
rejected events	19776	44584	19929	31078	21808	19807		50%	22%	49%	23%	49%	49%
rejected %	12%	11%	10%	7%	11%	11%	grade 1 events	438	281	474	300	433	440
								0%	0%	0%	0%	0%	0%
							grade 2 events	25047	127136	29518	85554	30792	27900
								15%	31%	15%	20%	15%	15%
							grade 3 events	8853	23576	10609	39776	10959	9814
								5%	5%	5%	9%	5%	5%
							grade 4 events	8836	23492	10874	39397	11059	9783
								5%	5%	5%	9%	5%	5%
							grade 5 events	1305	8455	1516	6220	1647	1451
								0%	2%	0%	1%	0%	0%
							grade 6 events	19416	97054	27360	123399	25610	24235
								11%	24%	14%	29%	13%	13%
							grade 7 events	17150	33661	16744	22316	18373	16850
								10%	8%	8%	5%	9%	9%

2.2 Compared Parameters

Parameter	Planned	Actual
Instrument	ACIS	ACIS
Detector	ACIS-456789	ACIS-456789
Grating	NONE	NONE
Data mode	FAINT	FAINT
Observation mode	SECONDARY	SECONDARY
[deg] Pointing RA	0	46.7903783717237
[deg] Pointing Dec	0	54.07380788385265
[deg] Pointing Roll	0.0	289.4614052719531
[mm] SIM focus pos	-0.684267	-0.7809083437167272
[mm] SIM defocus	0	0.7524282956875696
[mm] SIM translation stage pos	-190.132523	250.466033080201
[mm] SIM translation stage offset	0	-0.01005468664627074
[s] Observation start time (MET)	98924644.81999999	98924644.051447
Observation start date	2001-02-18T23:04:05	2001-02-18T23:04:04
[s] Observation end time (MET)	98966333.62100001	98966332.853055
Observation end date	2001-02-19T10:38:54	2001-02-19T10:38:52
Read mode	TIMED	TIMED

Parameter	Planned	Actual
Obspar format version number	7	7
Obspar file type	PREDICTED	ACTUAL
Obspar update status	NONE	UPDATED
On-chip summing requested	N	N
Subarray requested	NONE	NONE
Alternating exposures requested	N	N
[s] Primary exposure time	0.000000	3.2

2.3 Star Slots

2.4 FID Slots

A Summary

A.1 Status

V&V Scientist	Jen Lauer
V&V Date (YYYY-MM-DD)	2012.09.19
V&V Edition	1
V&V Disposition and Status	OK
V&V Charge Time	5.4287049604952

A.2 Comments