

V&V Reference Report

L2 ASCDS Version : 8.4.5

Observation 61681 - L2 Version 3
Chandra X-Ray Center

L2 Processing Date : Sep 14 2012

Contents

1	Front	2
2	OBI	3
2.1	OBI	3
2.1.1	Images	3
2.1.2	Bias	3
2.1.3	Parameters	4
2.1.4	Events	4
2.2	Compared Parameters	5
2.3	Star Slots	6
2.4	FID Slots	6
A	Summary	7
A.1	Status	7
A.2	Comments	7

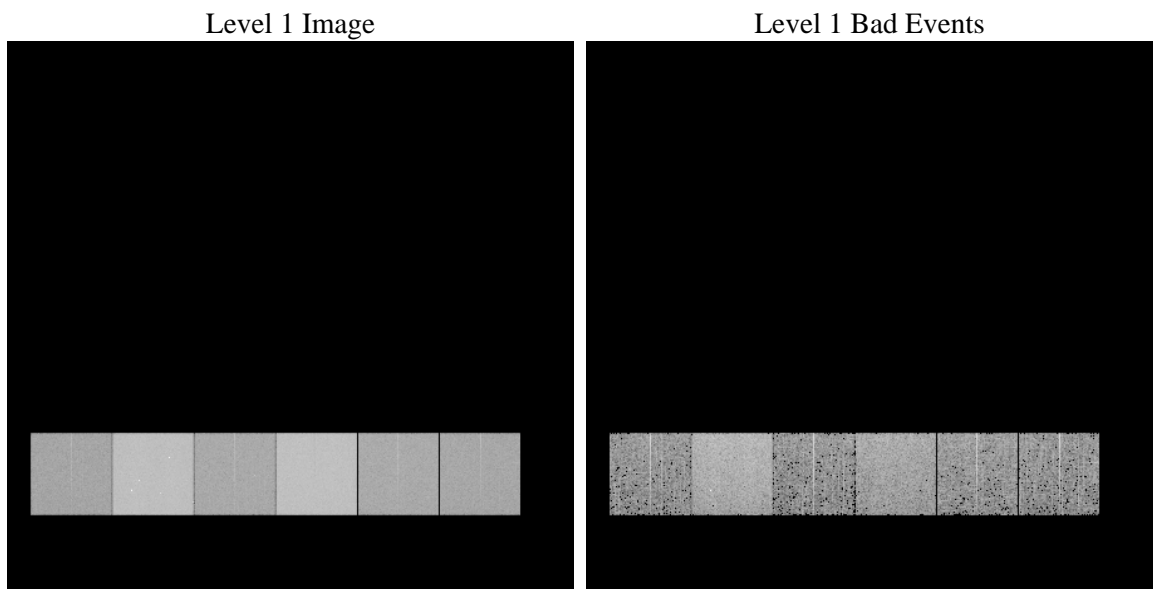
1 Front

seq_num	 	Sequence number
obs_id	61681	Observation id
title	ACIS-456789 diagnostics	Proposal title
observer	CHANDRA engineering request/realtime commanding	Principal investig
object	 	Source name
dtcycle	0	
cycle	P	events from which exps? Prim/Second/Both
ra_targ	0.0	Observer's specified target RA [deg]
dec_targ	0.0	Observer's specified target Dec [deg]
ra_nom	177.98433027787	Nominal RA [deg]
dec_nom	19.975423600346	Nominal Dec [deg]
roll_nom	206.46888660011	Nominal Roll [deg]
revision	3	Processing version of data
ontime	5528.0561534017	Sum of GTIs [s]
livetime	5458.0565777916	Livetime [s]
ontime4	2194.1822000295	Sum of GTIs [s]
ontime5	5940.7776799351	Sum of GTIs [s]
ontime6	2388.644280538	Sum of GTIs [s]
ontime7	5528.0561534017	Sum of GTIs [s]
ontime8	2440.5010997951	Sum of GTIs [s]
ontime9	2278.4491799772	Sum of GTIs [s]
l2events	1319973	Number of level 2 events

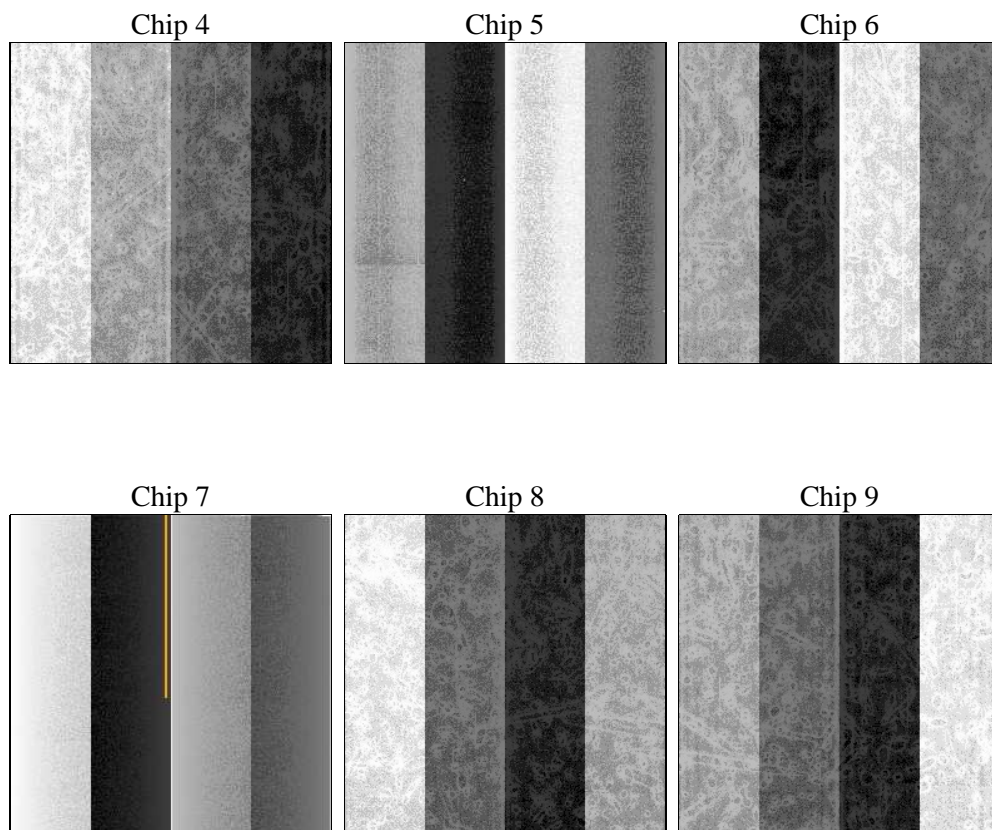
2 OBI

2.1 OBI

2.1.1 Images



2.1.2 Bias



2.1.3 Parameters

obi_num	0	Obi number	sched_exp_time	0.0	[s] Scheduled observation exposure time
ascdsver	8.4.5	Processing system revision	ontime	5528.0561534017	Sum of GTIs [s]
caldbver	4.5.1.1	 	ontime4	2194.1822000295	Sum of GTIs [s]
date	2012-09-14T21:50:27	Date and time of file creation	ontime5	5940.7776799351	Sum of GTIs [s]
revision	3	Processing version of data	ontime6	2388.644280538	Sum of GTIs [s]
			ontime7	5528.0561534017	Sum of GTIs [s]
			ontime8	2440.5010997951	Sum of GTIs [s]
			ontime9	2278.4491799772	Sum of GTIs [s]
			l1events	1535536	Number of level 1 events

2.1.4 Events

	ccd 4	ccd 5	ccd 6	ccd 7	ccd 8	ccd 9		ccd 4	ccd 5	ccd 6	ccd 7	ccd 8	ccd 9
level 1 events	163068	402254	188362	413984	194141	173727	grade 0 events	81189	89947	92461	99079	95195	84885
rejected events	20420	44688	19510	30477	22269	19964		49%	22%	49%	23%	49%	48%
rejected %	12%	11%	10%	7%	11%	11%	grade 1 events	476	269	444	269	489	473
								0%	0%	0%	0%	0%	0%
							grade 2 events	25282	126851	29247	85288	30521	27122
								15%	31%	15%	20%	15%	15%
							grade 3 events	8605	23343	10500	39317	10604	9645
								5%	5%	5%	9%	5%	5%
							grade 4 events	8777	23483	10414	39200	10951	9410
								5%	5%	5%	9%	5%	5%
							grade 5 events	1372	8409	1506	6171	1631	1448
								0%	2%	0%	1%	0%	0%
							grade 6 events	19643	95696	26898	122167	25476	23396
								12%	23%	14%	29%	13%	13%
							grade 7 events	17724	34256	16892	22493	19274	17348
								10%	8%	8%	5%	9%	9%

2.2 Compared Parameters

Parameter	Planned	Actual	Parameter	Planned	Actual
Instrument	ACIS	ACIS	Obspar format version number	7	7
Detector	ACIS-456789	ACIS-456789	Obspar file type	PREDICTED	ACTUAL
Grating	NONE	NONE	Obspar update status	NONE	UPDATED
Data mode	FAINT	FAINT	On-chip summing requested	N	N
Observation mode	SECONDARY	SECONDARY	Subarray requested	NONE	NONE
[deg] Pointing RA	0	177.9843302778688	Alternating exposures requested	N	N
[deg] Pointing Dec	0	19.9754236003455	[s] Primary exposure time	0.000000	3.2
[deg] Pointing Roll	0.0	206.4688866001077			
[mm] SIM focus pos	-0.684267	-0.6828225247311905			
[mm] SIM defocus	0	0.8505141146731063			
[mm] SIM translation stage pos	-190.132523	250.466033080201			
[mm] SIM translation stage offset	0	-0.01005468664627074			
[s] Observation start time (MET)	102383829.304	102383828.53516			
Observation start date	2001-03-30T23:57:09	2001-03-30T23:57:08			
[s] Observation end time (MET)	102395922.254	102395921.48563			
Observation end date	2001-03-31T03:18:42	2001-03-31T03:18:41			
Read mode	TIMED	TIMED			

2.3 Star Slots

2.4 FID Slots

A Summary

A.1 Status

V&V Scientist	Jen Lauer
V&V Date (YYYY-MM-DD)	2012.09.18
V&V Edition	1
V&V Disposition and Status	OK
V&V Charge Time	5.5280561534017

A.2 Comments