

V&V Reference Report

L2 ASCDS Version : 8.4.5

Observation 61651 - L2 Version 3
Chandra X-Ray Center

L2 Processing Date : Sep 18 2012

Contents

1	Front	2
2	OBI	3
2.1	OBI	3
2.1.1	Images	3
2.1.2	Bias	3
2.1.3	Parameters	4
2.1.4	Events	4
2.2	Compared Parameters	5
2.3	Star Slots	6
2.4	FID Slots	6
A	Summary	7
A.1	Status	7
A.2	Comments	7

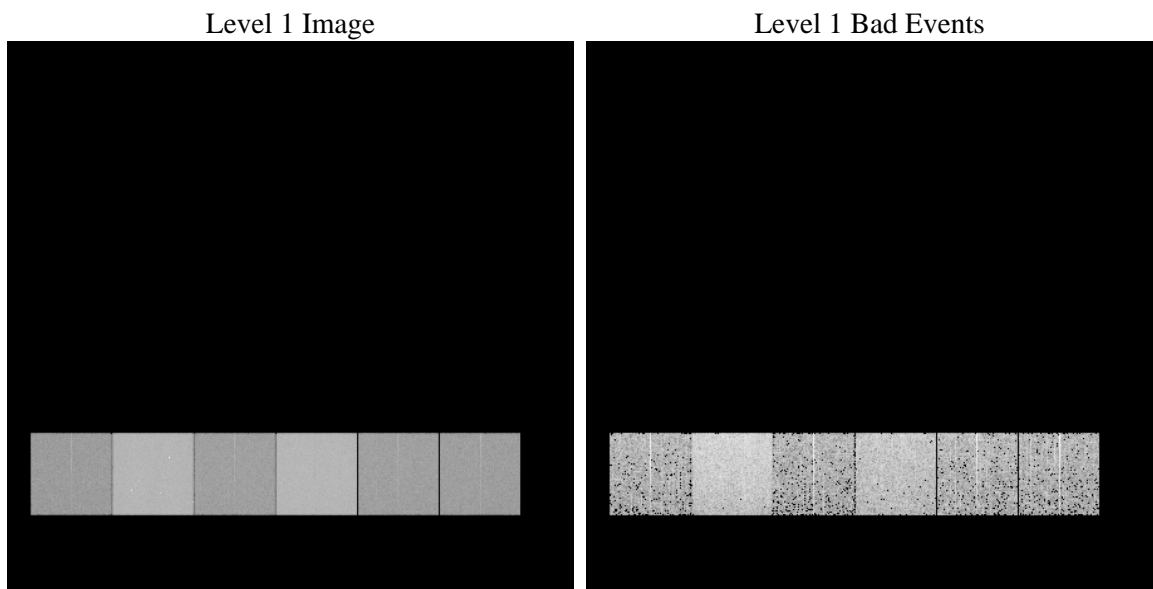
1 Front

seq_num	 	Sequence number
obs_id	61651	Observation id
title	ACIS-456789 diagnostics	Proposal title
observer	CHANDRA engineering request/realtime commanding	Principal investig
object	 	Source name
dtcycle	0	
cycle	P	events from which exps? Prim/Second/Both
ra_targ	0.0	Observer's specified target RA [deg]
dec_targ	0.0	Observer's specified target Dec [deg]
ra_nom	279.97207476303	Nominal RA [deg]
dec_nom	25.013598789919	Nominal Dec [deg]
roll_nom	119.1196848114	Nominal Roll [deg]
revision	3	Processing version of data
ontime	5284.387125209	Sum of GTIs [s]
livetime	5217.4730335537	Livetime [s]
ontime4	2113.1559410989	Sum of GTIs [s]
ontime5	5670.0203344375	Sum of GTIs [s]
ontime6	2314.1003507525	Sum of GTIs [s]
ontime7	5284.387125209	Sum of GTIs [s]
ontime8	2288.1719909757	Sum of GTIs [s]
ontime9	2226.5923208892	Sum of GTIs [s]
l2events	1236801	Number of level 2 events

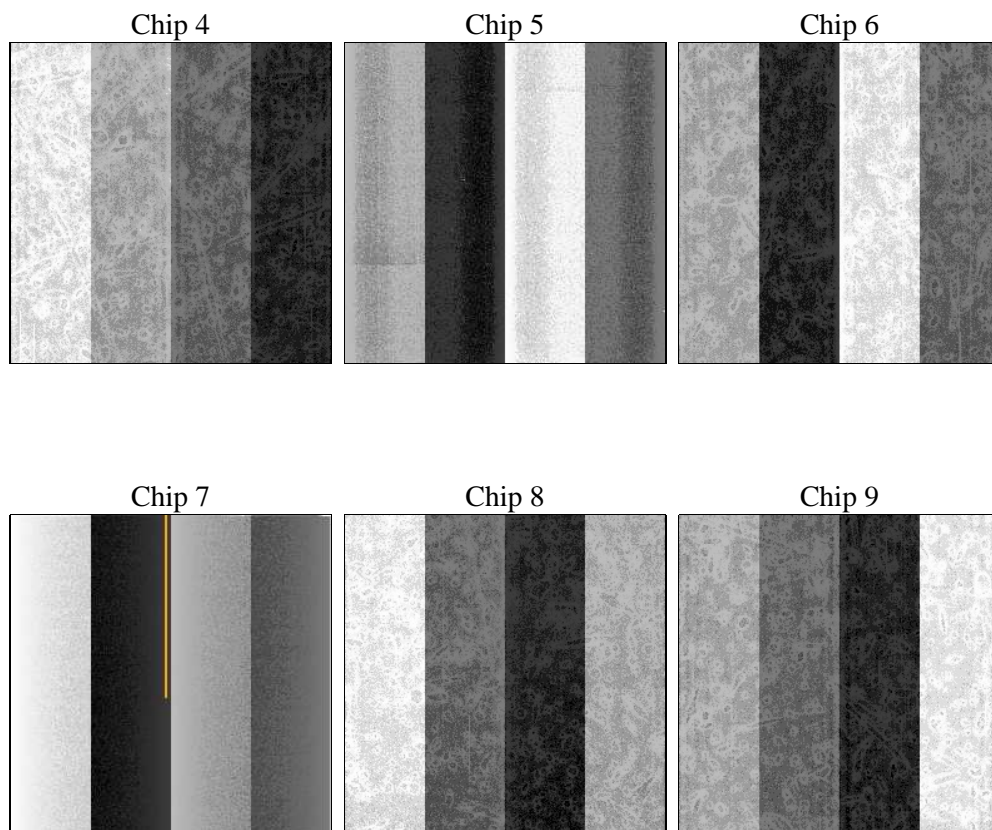
2 OBI

2.1 OBI

2.1.1 Images



2.1.2 Bias



2.1.3 Parameters

obi_num	2	Obi number	sched_exp_time	0.0	[s] Scheduled observation exposure time
ascdsver	8.4.5	Processing system revision	ontime	5284.387125209	Sum of GTIs [s]
caldsver	4.5.1.1	 	ontime4	2113.1559410989	Sum of GTIs [s]
date	2012-09-18T19:37:41	Date and time of file creation	ontime5	5670.0203344375	Sum of GTIs [s]
revision	3	Processing version of data	ontime6	2314.1003507525	Sum of GTIs [s]
			ontime7	5284.387125209	Sum of GTIs [s]
			ontime8	2288.1719909757	Sum of GTIs [s]
			ontime9	2226.5923208892	Sum of GTIs [s]
			l1events	1429467	Number of level 1 events

2.1.4 Events

	ccd 4	ccd 5	ccd 6	ccd 7	ccd 8	ccd 9		ccd 4	ccd 5	ccd 6	ccd 7	ccd 8	ccd 9
level 1 events	151878	375991	176281	384613	175888	164816	grade 0 events	76193	88105	87051	92123	86884	80732
rejected events	17589	38841	17112	27424	18942	17831		50%	23%	49%	23%	49%	48%
rejected %	11%	10%	9%	7%	10%	10%	grade 1 events	406	293	425	261	431	398
								0%	0%	0%	0%	0%	0%
							grade 2 events	23473	115009	27626	79118	27503	26037
								15%	30%	15%	20%	15%	15%
							grade 3 events	8287	22994	9634	37014	9809	9001
								5%	6%	5%	9%	5%	5%
							grade 4 events	8206	22792	9964	36263	9824	9013
								5%	6%	5%	9%	5%	5%
							grade 5 events	1223	7698	1450	5795	1480	1381
								0%	2%	0%	1%	0%	0%
							grade 6 events	18130	88435	24894	112880	22926	22202
								11%	23%	14%	29%	13%	13%
							grade 7 events	15960	30665	15237	21159	17031	16052
								10%	8%	8%	5%	9%	9%

2.2 Compared Parameters

Parameter	Planned	Actual	Parameter	Planned	Actual
Instrument	ACIS	ACIS	Obspar format version number	7	7
Detector	ACIS-456789	ACIS-456789	Obspar file type	PREDICTED	ACTUAL
Grating	NONE	NONE	Obspar update status	NONE	UPDATED
Data mode	FAINT	FAINT	On-chip summing requested	N	N
Observation mode	SECONDARY	SECONDARY	Subarray requested	NONE	NONE
[deg] Pointing RA	0	279.9720747630337	Alternating exposures requested	N	N
[deg] Pointing Dec	0	25.01359878991865	[s] Primary exposure time	0.000000	3.2
[deg] Pointing Roll	0.0	119.1196848113971			
[mm] SIM focus pos	-0.684267	-0.6828225247311905			
[mm] SIM defocus	0	0.8505141146731063			
[mm] SIM translation stage pos	-190.132523	250.466033080201			
[mm] SIM translation stage offset	0	-0.01005468664627074			
[s] Observation start time (MET)	105310737.417	105310736.64863			
Observation start date	2001-05-03T20:58:57	2001-05-03T20:58:56			
[s] Observation end time (MET)	105322490.068	105322489.29909			
Observation end date	2001-05-04T00:14:50	2001-05-04T00:14:49			
Read mode	TIMED	TIMED			

2.3 Star Slots

2.4 FID Slots

A Summary

A.1 Status

V&V Scientist	Jen Lauer
V&V Date (YYYY-MM-DD)	2012.09.20
V&V Edition	1
V&V Disposition and Status	OK
V&V Charge Time	5.284387125209

A.2 Comments