

# V&V Reference Report

## L2 ASCDS Version : 7.6.9

Observation 61621 - L2 Version 001  
Chandra X-Ray Center

L2 Processing Date : Nov 21 2006

## Contents

<b>1</b>	<b>Front</b>	<b>2</b>
<b>2</b>	<b>OBI</b>	<b>3</b>
2.1	OBI . . . . .	3
2.1.1	Images . . . . .	3
2.1.2	Bias . . . . .	3
2.1.3	Parameters . . . . .	4
2.1.4	Events . . . . .	4
2.2	Compared Parameters . . . . .	5
2.3	Aspect . . . . .	6
2.4	Star Slots . . . . .	8
2.5	FID Slots . . . . .	8
<b>A</b>	<b>Summary</b>	<b>9</b>
A.1	Status . . . . .	9
A.2	Comments . . . . .	9

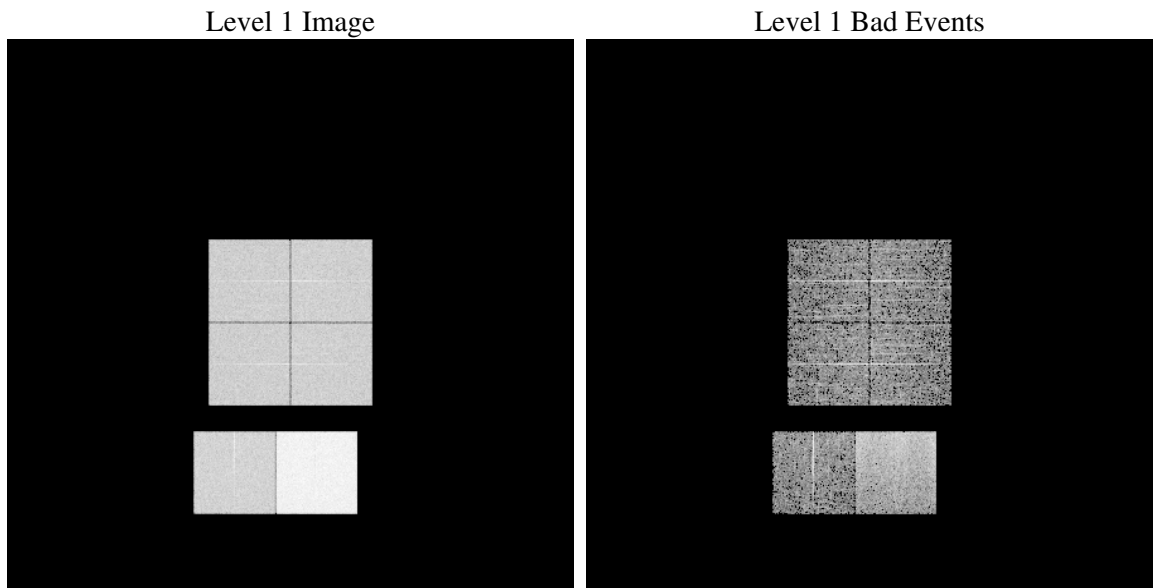
# 1 Front

seq_num	&#160
obs_id	61621
title	ACIS-012367 diagnostics
observer	CHANDRA engineering request/realtime commanding
object	&#160
dtcycle	0
cycle	P
ra_targ	0.0
dec_targ	0.0
ra_nom	96.990151910013
dec_nom	-31.027388466435
roll_nom	220.19073777241
revision	2
ontime	5010.3974691927
livetime	4946.9527995387
ontime0	2012.4877221137
ontime1	2061.1033020765
ontime2	1944.4237202257
ontime3	1993.0756730437
ontime6	2155.0495916903
ontime7	5010.3974691927
l2events	948218

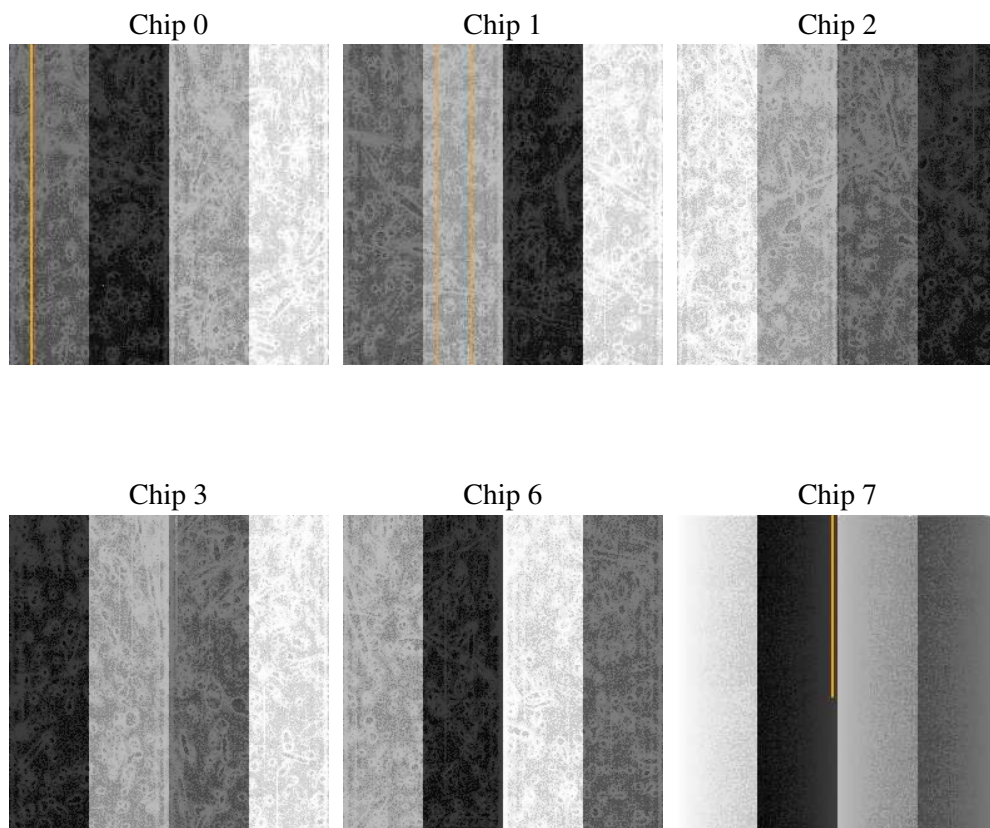
## 2 OBI

### 2.1 OBI

#### 2.1.1 Images



#### 2.1.2 Bias



### 2.1.3 Parameters

obi_num	0
ascdsver	7.6.9
caldsver	3.2.4
date	2006-11-21T23:40:18
revision	2

sched_exp_time	0.0
ontime	5010.592840597
ontime0	2012.683093518
ontime1	2061.2986734807
ontime2	1944.6216724366
ontime3	1993.2372522354
ontime6	2155.2885839045
ontime7	5010.592840597
l1events	1104929

### 2.1.4 Events

	ccd 0	ccd 1	ccd 2	ccd 3	ccd 6	ccd 7
level 1 events	143959	148950	142794	145960	161916	361350
rejected events	14889	16076	16024	16198	16391	36725
rejected %	10%	10%	11%	11%	10%	10%

	ccd 0	ccd 1	ccd 2	ccd 3	ccd 6	ccd 7
grade 0 events	71298	73081	70664	72431	79456	62855
	49%	49%	49%	49%	49%	17%
grade 1 events	360	355	362	403	419	141
	0%	0%	0%	0%	0%	0%
grade 2 events	22842	23437	22317	23026	25033	95441
	15%	15%	15%	15%	15%	26%
grade 3 events	8085	8497	8080	8296	9009	25489
	5%	5%	5%	5%	5%	7%
grade 4 events	8184	8437	7859	8242	8987	25196
	5%	5%	5%	5%	5%	6%
grade 5 events	1079	1170	1082	1122	1312	5371
	0%	0%	0%	0%	0%	1%
grade 6 events	18661	19422	17850	17767	23040	115644
	12%	13%	12%	12%	14%	32%
grade 7 events	13450	14551	14580	14673	14660	31213
	9%	9%	10%	10%	9%	8%

## 2.2 Compared Parameters

Parameter	Planned	Actual	Parameter	Planned	Actual
Instrument	ACIS	ACIS	Obspar format version number	6	6
Detector	ACIS-012367	ACIS-012367	Obspar file type	PREDICTED	ACTUAL
Grating	NONE	NONE	Obspar update status	NONE	UPDATED
Data mode	FAINT	FAINT	On-chip summing requested	N	N
Observation mode	SECONDARY	SECONDARY	Subarray requested	NONE	NONE
Pointing RA	0	96.99015191001327	Alternating exposures requested	N	N
Pointing Dec	0	-31.02738846643464	Primary exposure time	0.000000	3.2
Pointing Roll	0.0	220.1907377724077			
SIM focus pos (mm)	-0.782348	-0.6828225247311905			
SIM defocus (mm)	0	0.8505141146731063			
SIM translation stage pos (mm)	-233.592463	250.4635187648994			
SIM translation stage offset (mm)	0	-0.007540371344731511			
Observation start time	106910616.929	106910616.16079			
Observation start date	2001-05-22T09:23:37	2001-05-22T09:23:36			
Observation end time	106940581.78	106940581.01195			
Observation end date	2001-05-22T17:43:02	2001-05-22T17:43:01			
Read mode	TIMED	TIMED			

## 2.3 Aspect



## 2.4 Star Slots

## 2.5 FID Slots

## A Summary

### A.1 Status

V&V Scientist	Jen Lauer
V&V Date (YYYY-MM-DD)	2006.11.22
V&V Edition	1
V&V Disposition and Status	OK
V&V Charge Time	5.01039746

### A.2 Comments