

V&V Reference Report

L2 ASCDS Version : 8.5.1.1

Observation 6161 - L2 Version 3
Chandra X-Ray Center

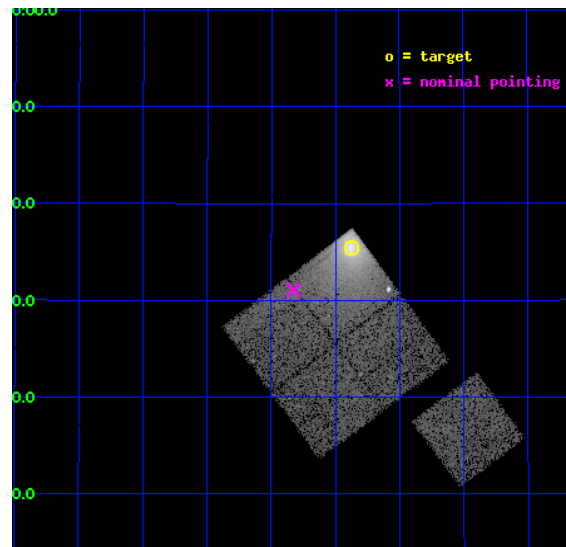
L2 Processing Date : Dec 20 2012

Contents

1	Front	2
2	OBI	3
2.1	OBI	3
2.1.1	Images	3
2.1.2	Bias	3
2.1.3	Parameters	4
2.1.4	Events	4
2.2	Compared Parameters	5
2.3	Aspect	6
2.4	Star Slots	9
2.4.1	Slot 3	9
2.4.2	Slot 4	10
2.4.3	Slot 5	11
2.4.4	Slot 6	12
2.4.5	Slot 7	13
2.5	FID Slots	14
2.5.1	Slot 0	14
2.5.2	Slot 1	15
2.5.3	Slot 2	16
A	Summary	17
A.1	Status	17
A.2	Comments	17

1 Front

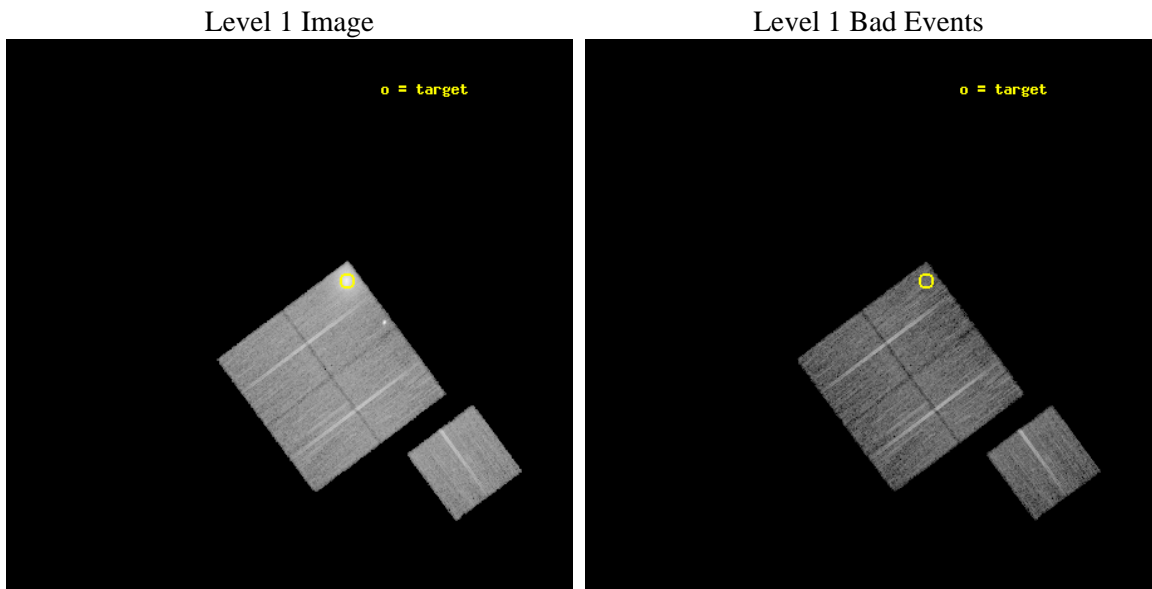
seq_num	890033	Sequence number
obs_id	6161	Observation id
title	Monitoring the Spatial Variation of the ACIS Contaminant with Abell 1795	Proposal title
observer	Dr. CXC Calibration	Principal investigator
object	A1795	Source name
dtcycle	0	
cycle	P	events from which exps? Prim/Second/Both
ra_targ	207.219583	Observer's specified target RA [deg]
dec_targ	26.590833	Observer's specified target Dec [deg]
ra_nom	207.33104050897	Nominal RA [deg]
dec_nom	26.518185612414	Nominal Dec [deg]
roll_nom	143.27525740985	Nominal Roll [deg]
revision	3	Processing version of data
ontime	13770.199973494	Sum of GTIs [s]
livetime	13590.282173366	Livetime [s]
ontime0	13770.199973494	Sum of GTIs [s]
ontime1	13770.199973494	Sum of GTIs [s]
ontime2	13770.199973494	Sum of GTIs [s]
ontime3	13763.917973101	Sum of GTIs [s]
ontime6	13770.199973494	Sum of GTIs [s]
l2events	102337	Number of level 2 events



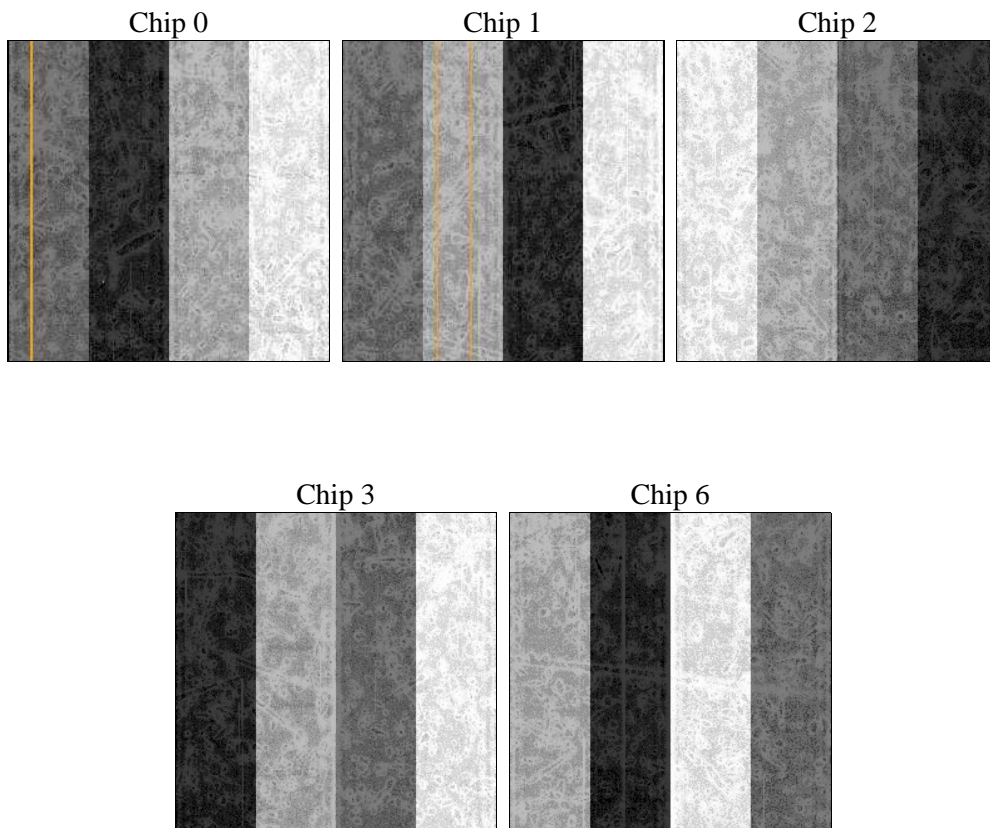
2 OBI

2.1 OBI

2.1.1 Images



2.1.2 Bias



2.1.3 Parameters

obi_num	0	Obi number	sched_exp_time	14000.000000	[s] Scheduled observation exposure time
ascdsver	8.5.1.1	Processing system revision	ontime	13770.199973494	Sum of GTIs [s]
caldsver	4.5.5	 	ontime0	13770.199973494	Sum of GTIs [s]
date	2012-12-21T01:13:20	Date and time of file creation	ontime1	13770.199973494	Sum of GTIs [s]
revision	3	Processing version of data	ontime2	13770.199973494	Sum of GTIs [s]
			ontime3	13763.917973101	Sum of GTIs [s]
			ontime6	13770.199973494	Sum of GTIs [s]
			l1events	494532	Number of level 1 events

2.1.4 Events

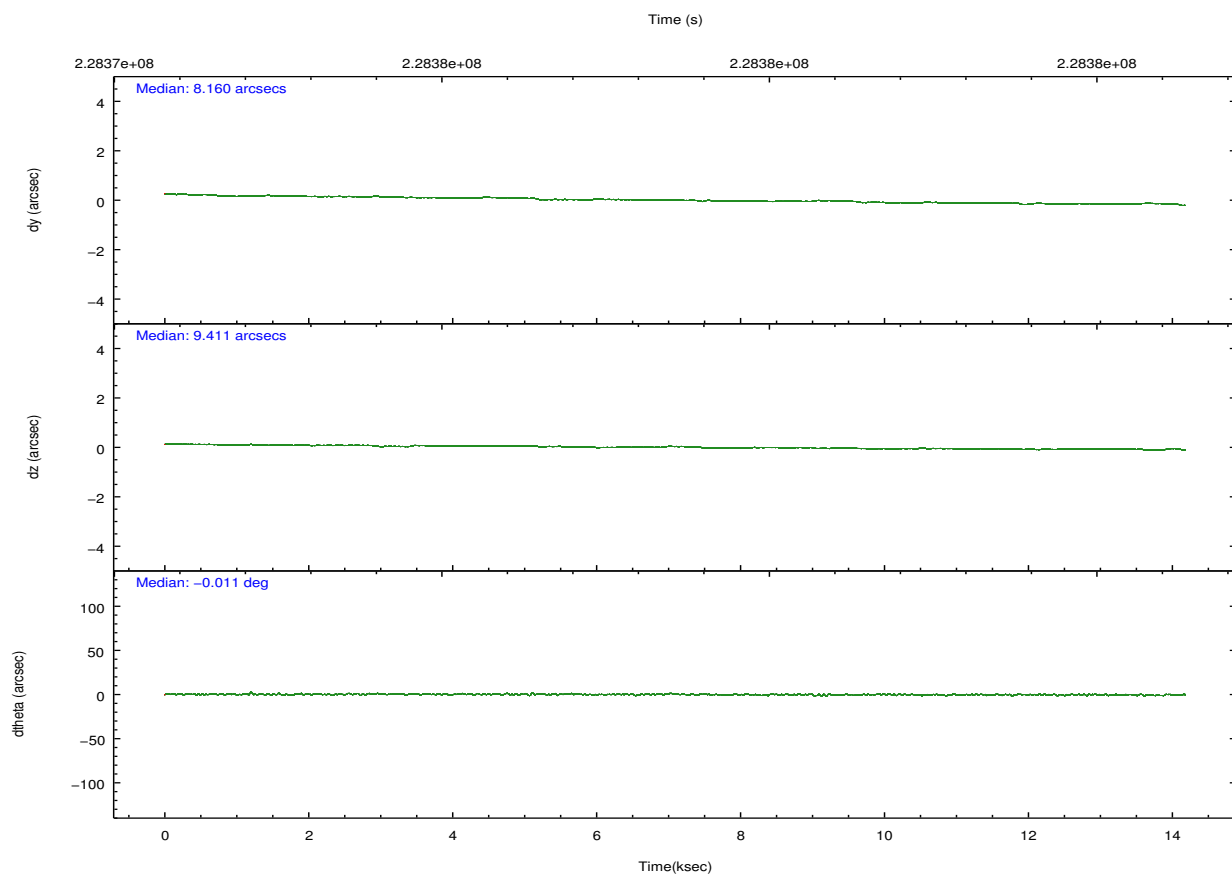
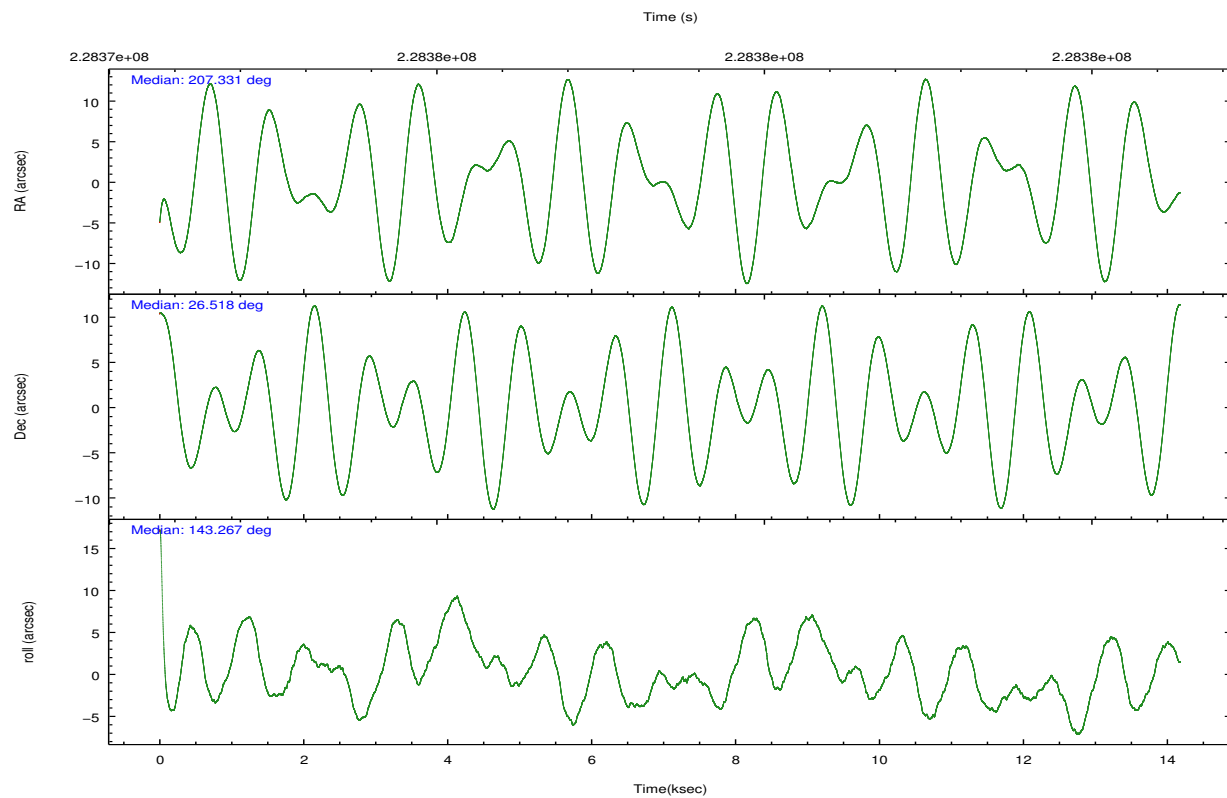
	ccd 0	ccd 1	ccd 2	ccd 3	ccd 6
level 1 events	152201	81074	92094	84716	84447
rejected events	75194	70372	82377	76310	75851
rejected %	49%	86%	89%	90%	89%

	ccd 0	ccd 1	ccd 2	ccd 3	ccd 6
grade 0 events	58125	4294	4071	3065	3004
	38%	5%	4%	3%	3%
grade 1 events	279	52	47	45	29
	0%	0%	0%	0%	0%
grade 2 events	9011	2159	2067	1794	1804
	5%	2%	2%	2%	2%
grade 3 events	3141	1107	974	950	964
	2%	1%	1%	1%	1%
grade 4 events	3118	1128	956	906	968
	2%	1%	1%	1%	1%
grade 5 events	3295	3363	2859	3274	3268
	2%	4%	3%	3%	3%
grade 6 events	3649	2016	1653	1695	1861
	2%	2%	1%	2%	2%
grade 7 events	71583	66955	79467	72987	72549
	47%	82%	86%	86%	85%

2.2 Compared Parameters

Parameter	Planned	Actual	Parameter	Planned	Actual
Instrument	ACIS	ACIS	Obspar format version number	7	7
Detector	ACIS-01236	ACIS-01236	Obspar file type	PREDICTED	ACTUAL
Grating	NONE	NONE	Obspar update status	NONE	UPDATED
Data mode	VFAINT	VFAINT	Number of optional ACIS chips dropped	0	0
Observation mode	POINTING	POINTING	On-chip summing requested	N	N
[deg] Pointing RA	207.361487	207.3310405089725	Subarray requested	NONE	NONE
[deg] Pointing Dec	26.515064	26.5181856124144	Alternating exposures requested	N	N
[deg] Pointing Roll	143.052966	143.275257409849	[s] Primary exposure time	0.000000	3.1
[mm] SIM focus pos	-0.782348	-0.7809083437167272			
[mm] SIM defocus	0	0.001439871863259334			
[mm] SIM translation stage pos	-256.092463	-256.0955850403938			
[mm] SIM translation stage offset	22.5	22.50313203746413			
[s] Observation start time (MET)	228371654.184000	228370530.09878			
Observation start date	2005-03-28T04:33:10	2005-03-28T04:15:30			
[s] Observation end time (MET)	228385654.184000	228385787.73698			
Observation end date	2005-03-28T08:26:30	2005-03-28T08:29:47			
Read mode	TIMED	TIMED			

2.3 Aspect

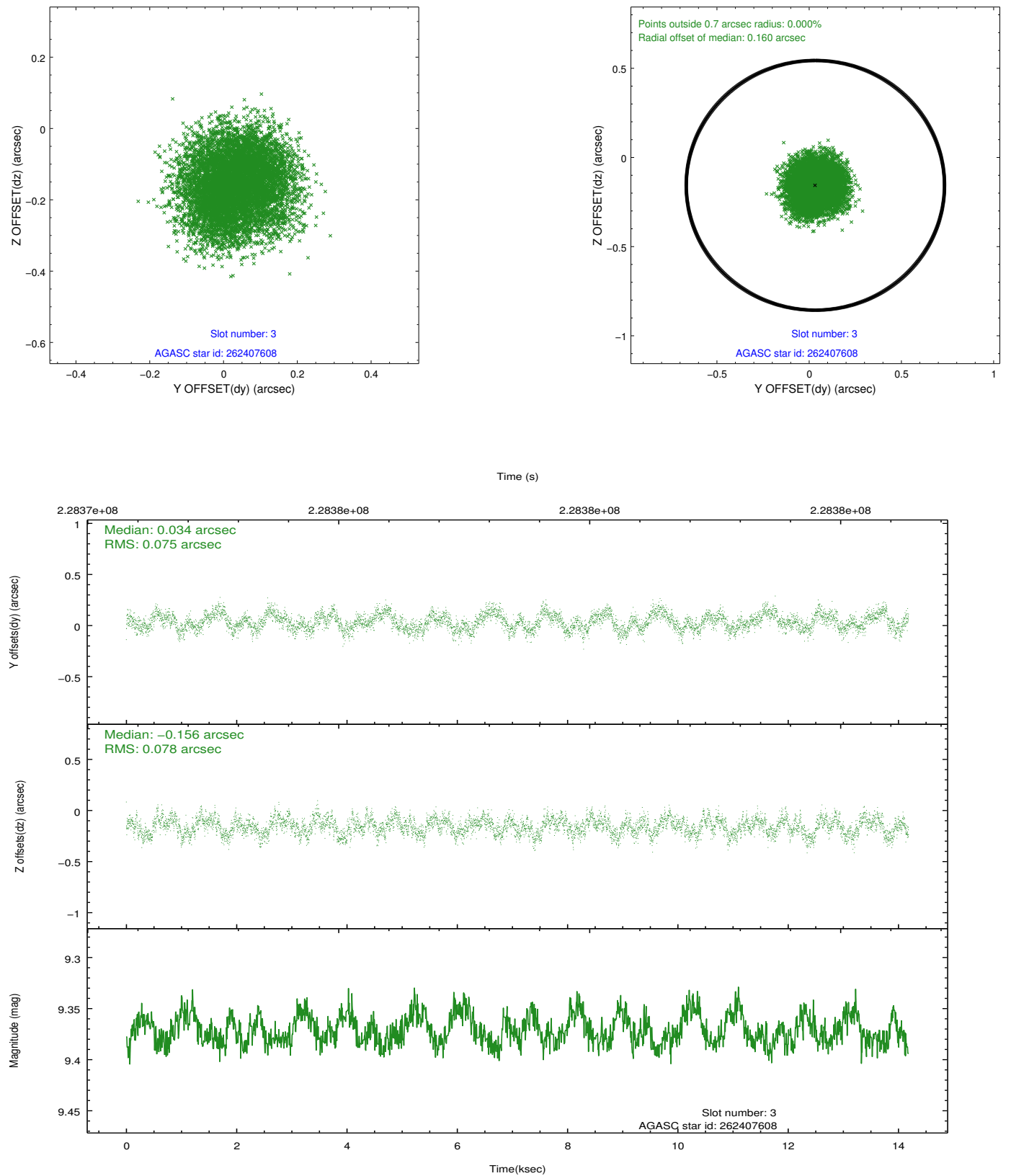


Slot Statistics

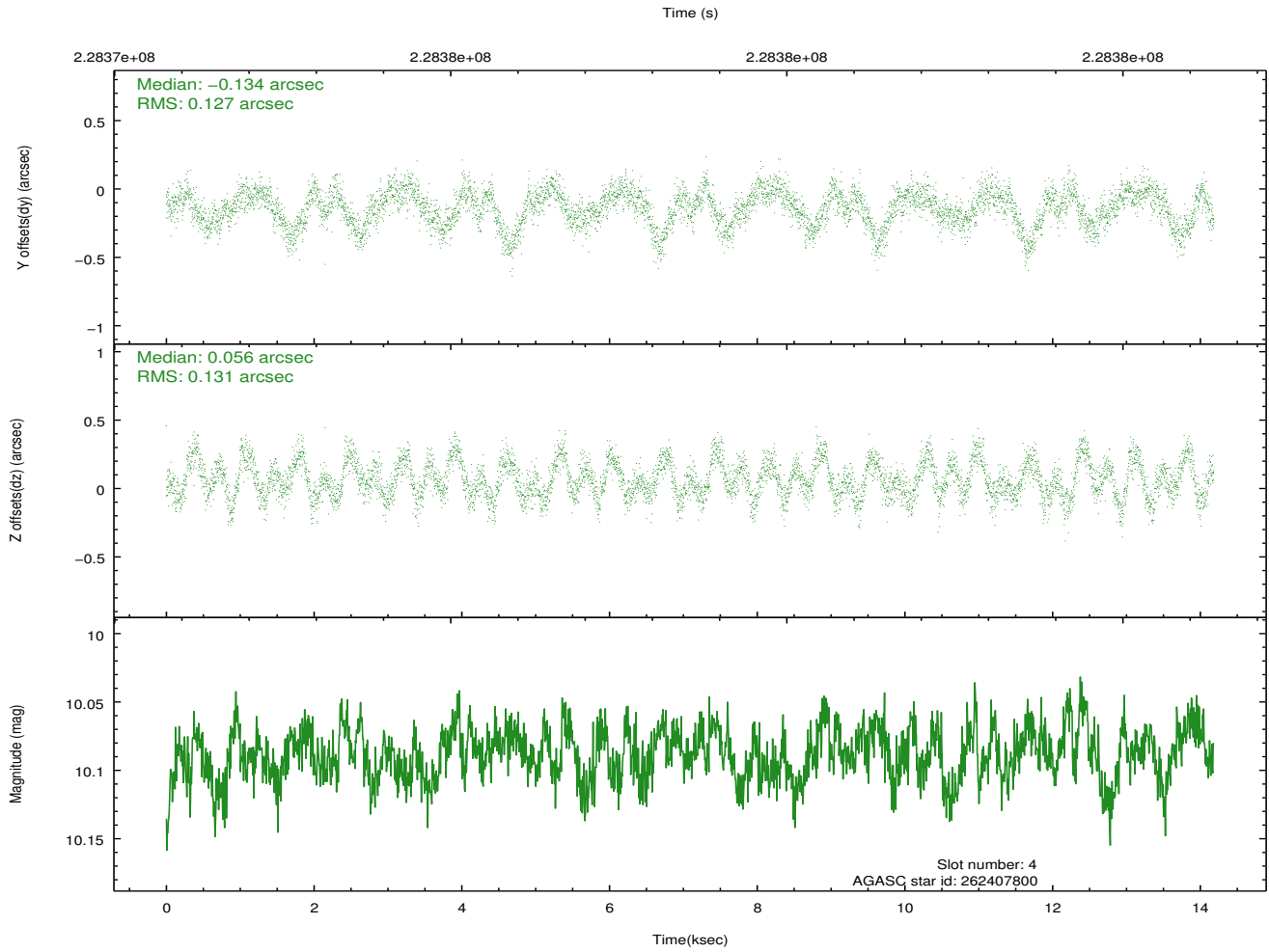
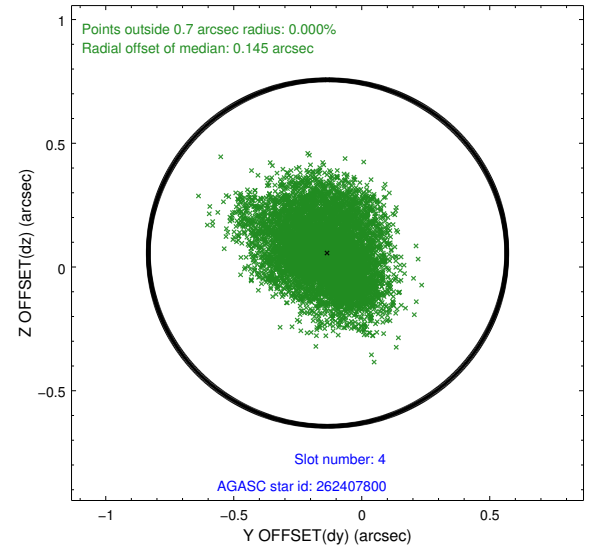
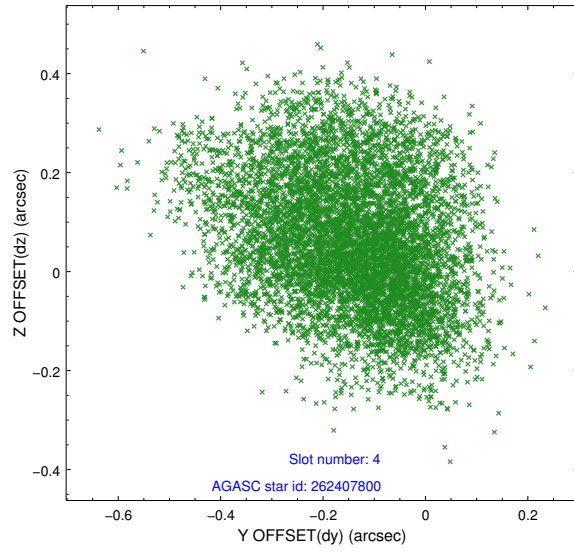
slot	status	id	mag	n_pts	med_dy	med_dz	dr1	dr2	ra	dec	mean_y	mean_z
0	FID	ACIS-I-2	7.27	3459	0.097	-0.711	0.010	0.017	0.000000	0.000000	-761.09	-379.75
1	FID	ACIS-I-5	7.24	3459	-0.173	0.516	0.008	0.014	0.000000	0.000000	-1816.93	1527.15
2	FID	ACIS-I-6	7.25	3460	-0.017	0.261	0.008	0.012	0.000000	0.000000	396.72	2172.12
3	GUIDE	262407608	9.37	6914	0.034	-0.156	0.119	0.180	207.378401	26.435507	-215.52	196.13
4	GUIDE	262407800	10.09	6912	-0.134	0.056	0.199	0.310	207.321181	27.251762	1698.33	-2040.79
5	GUIDE	262408096	9.34	6915	0.007	-0.001	0.115	0.182	207.011678	26.515421	902.88	675.16
6	GUIDE	262408936	9.65	6913	0.128	0.105	0.128	0.207	207.154731	26.726554	989.70	-208.76
7	GUIDE	262411960	9.66	6912	-0.010	-0.007	0.114	0.185	207.327895	25.881727	-1283.39	1887.58

2.4 Star Slots

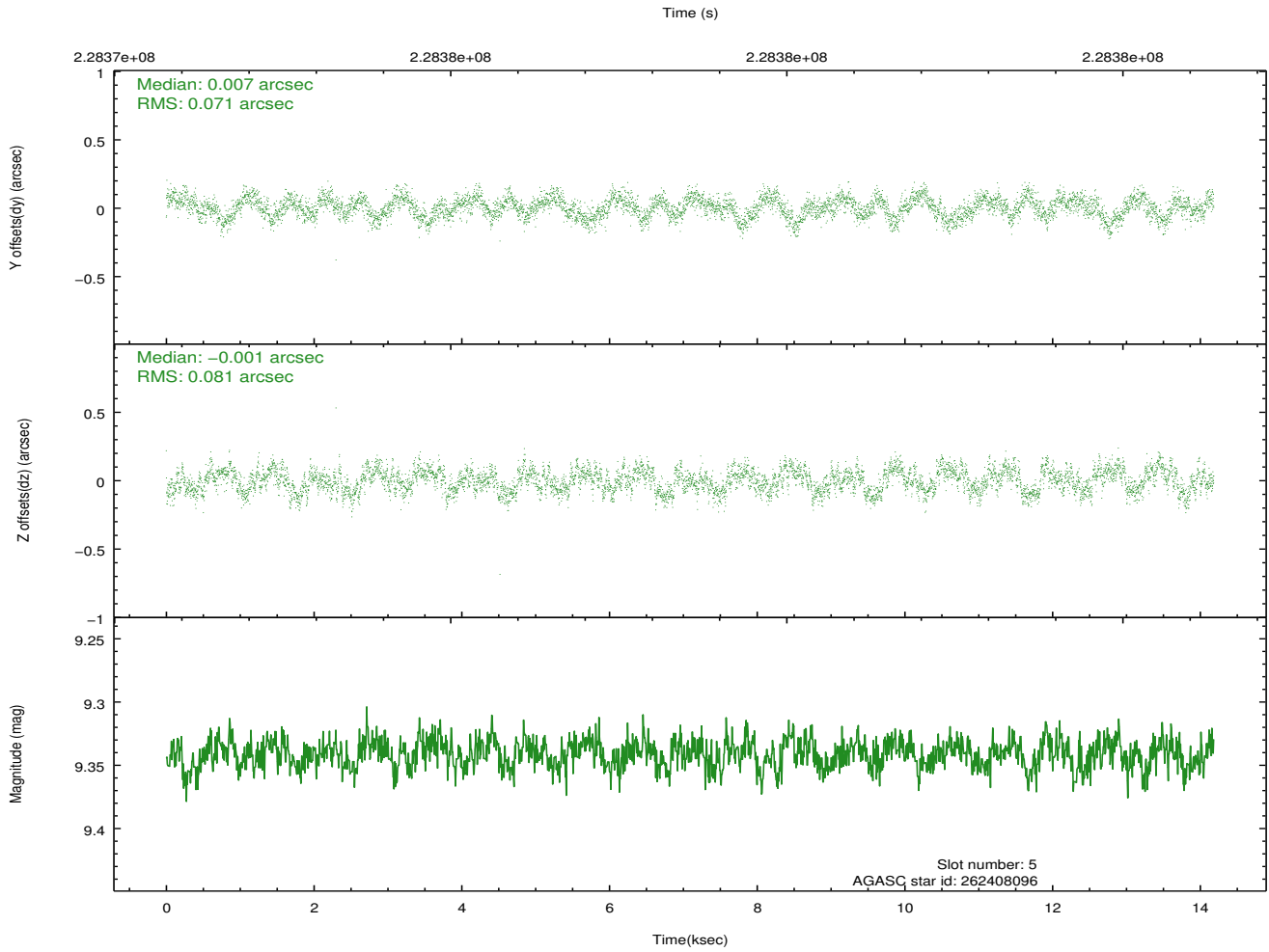
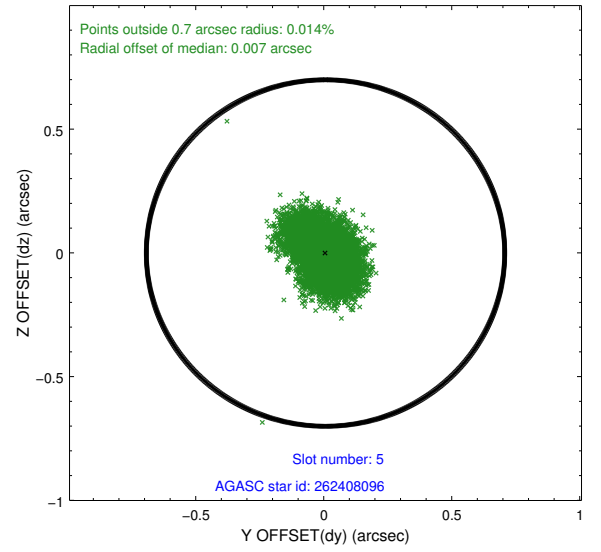
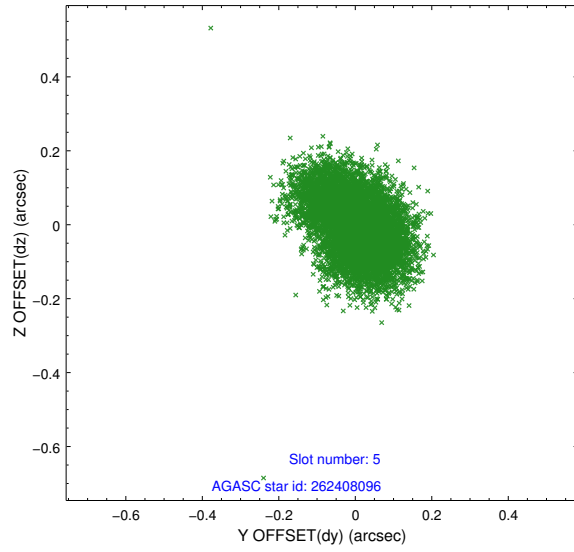
2.4.1 Slot 3



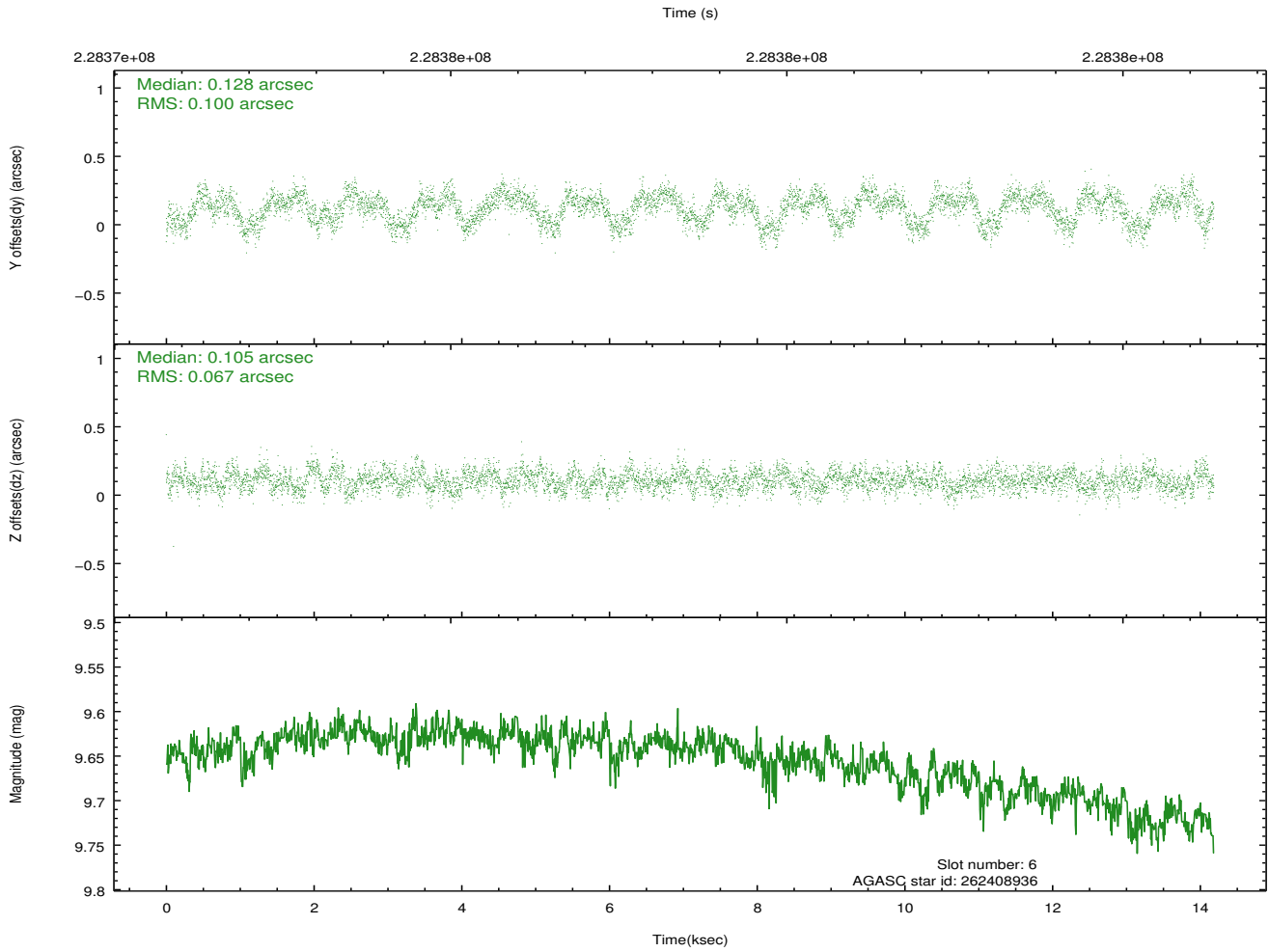
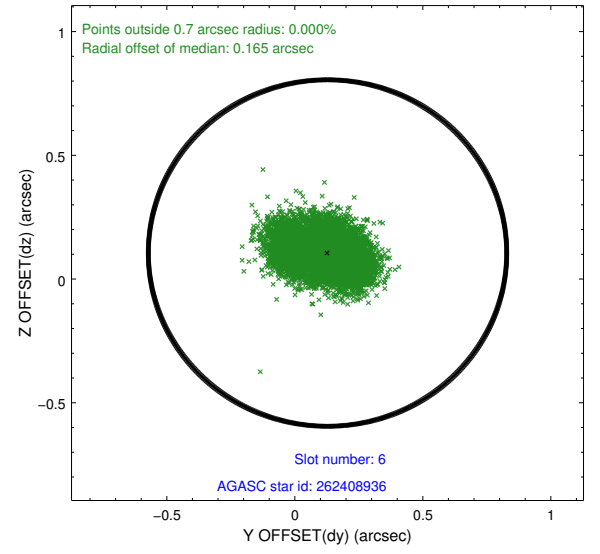
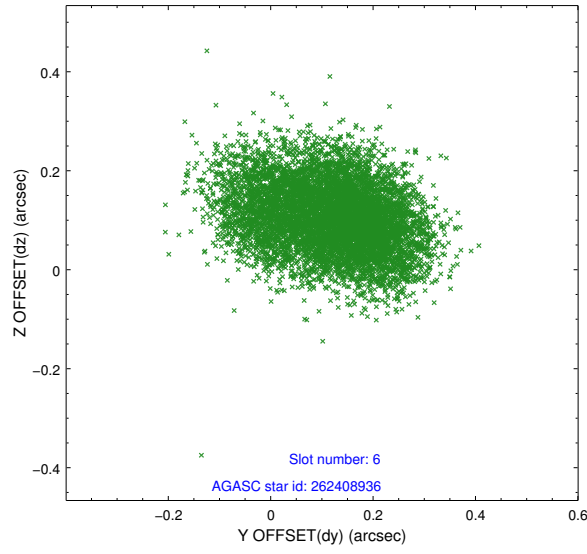
2.4.2 Slot 4



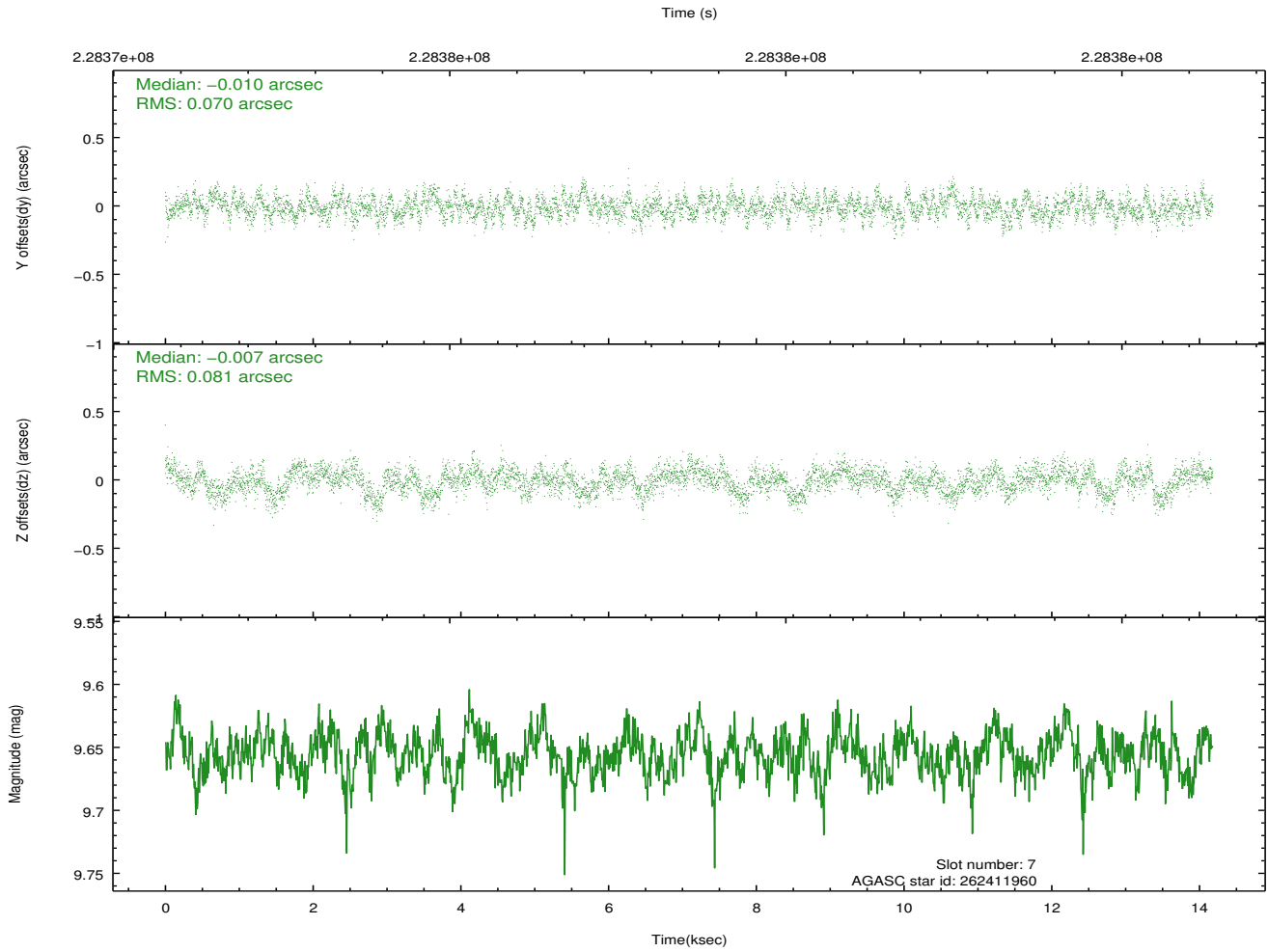
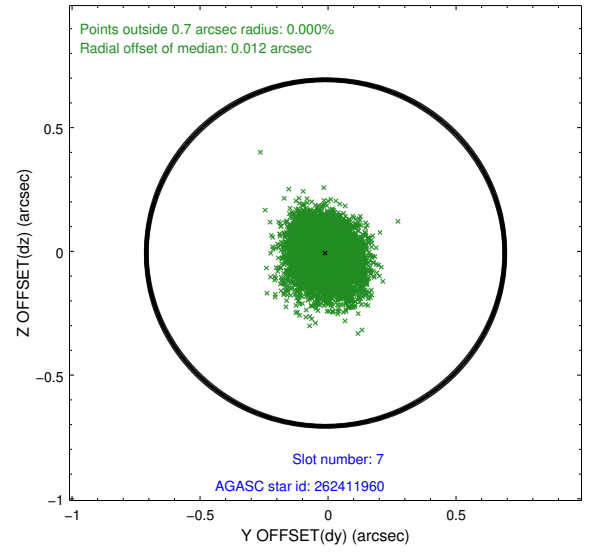
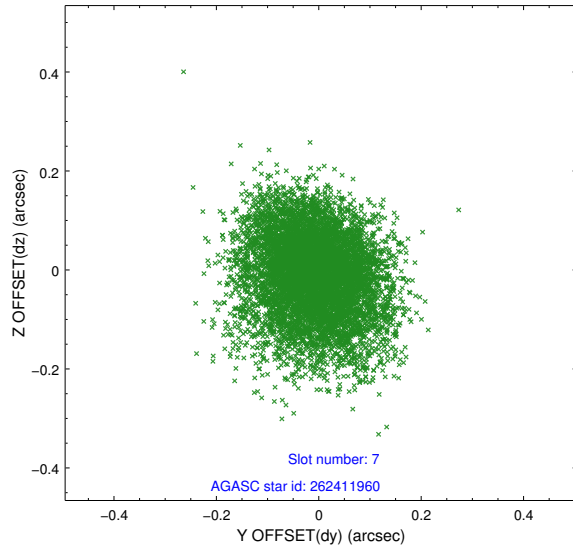
2.4.3 Slot 5



2.4.4 Slot 6

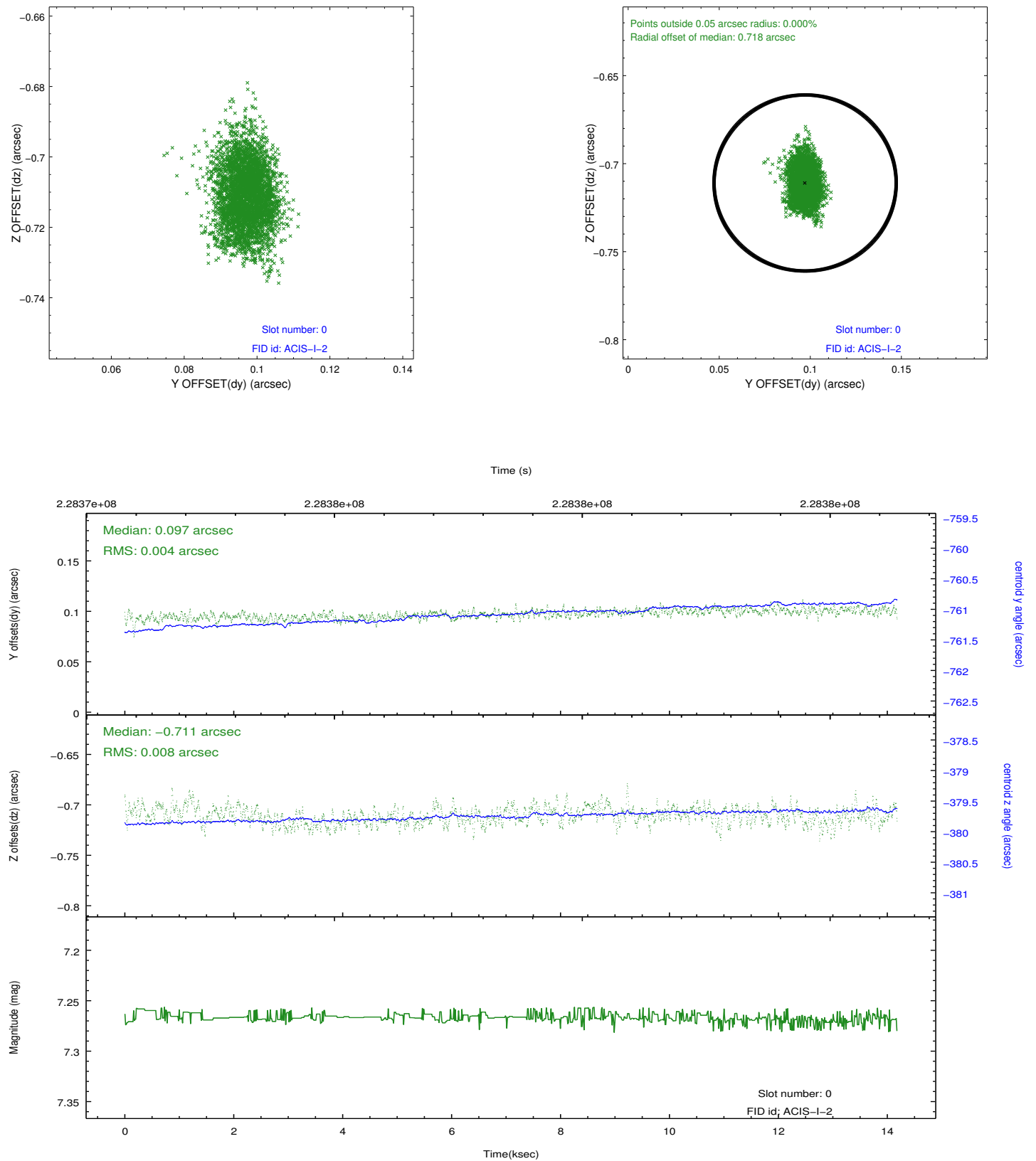


2.4.5 Slot 7

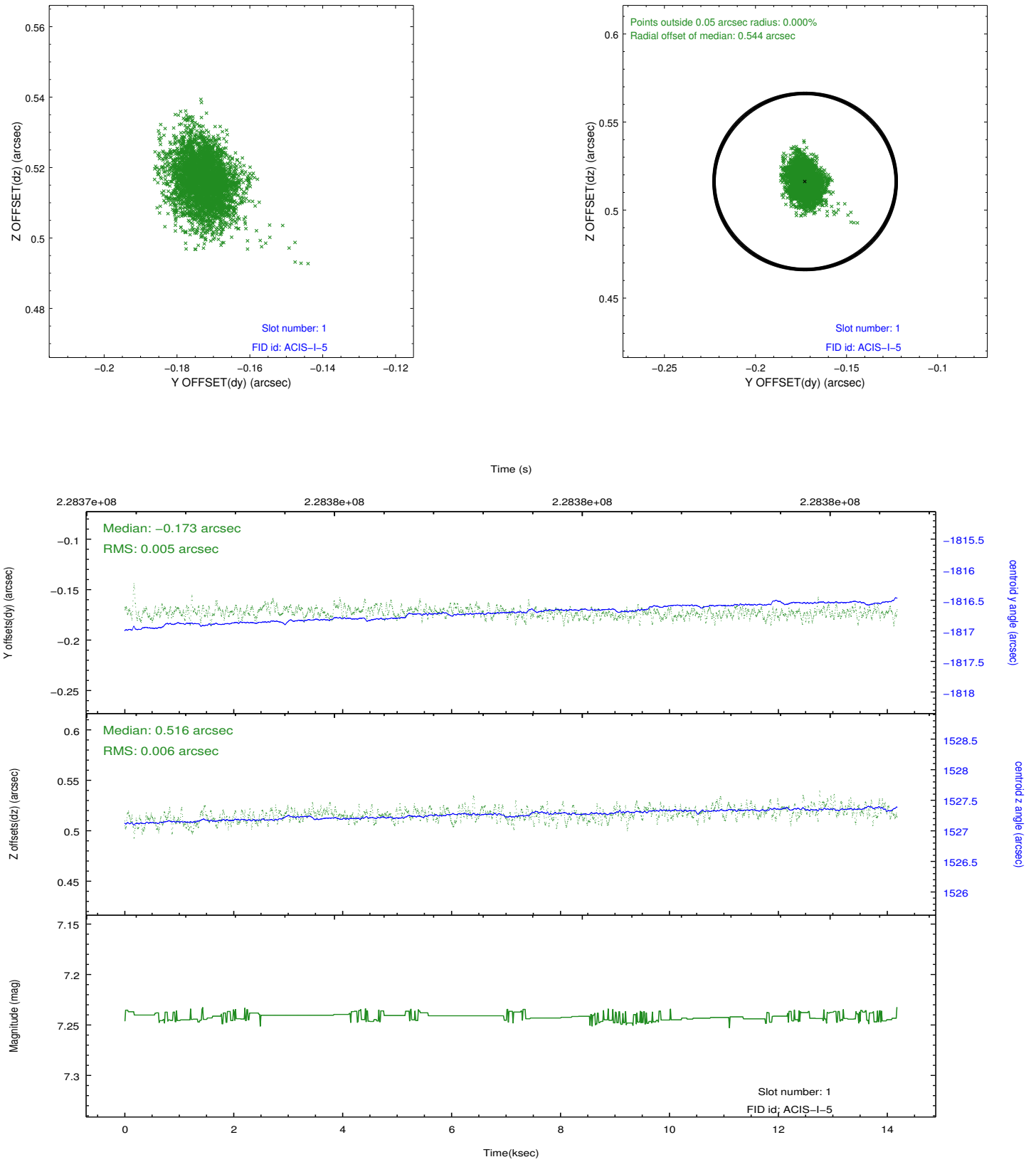


2.5 FID Slots

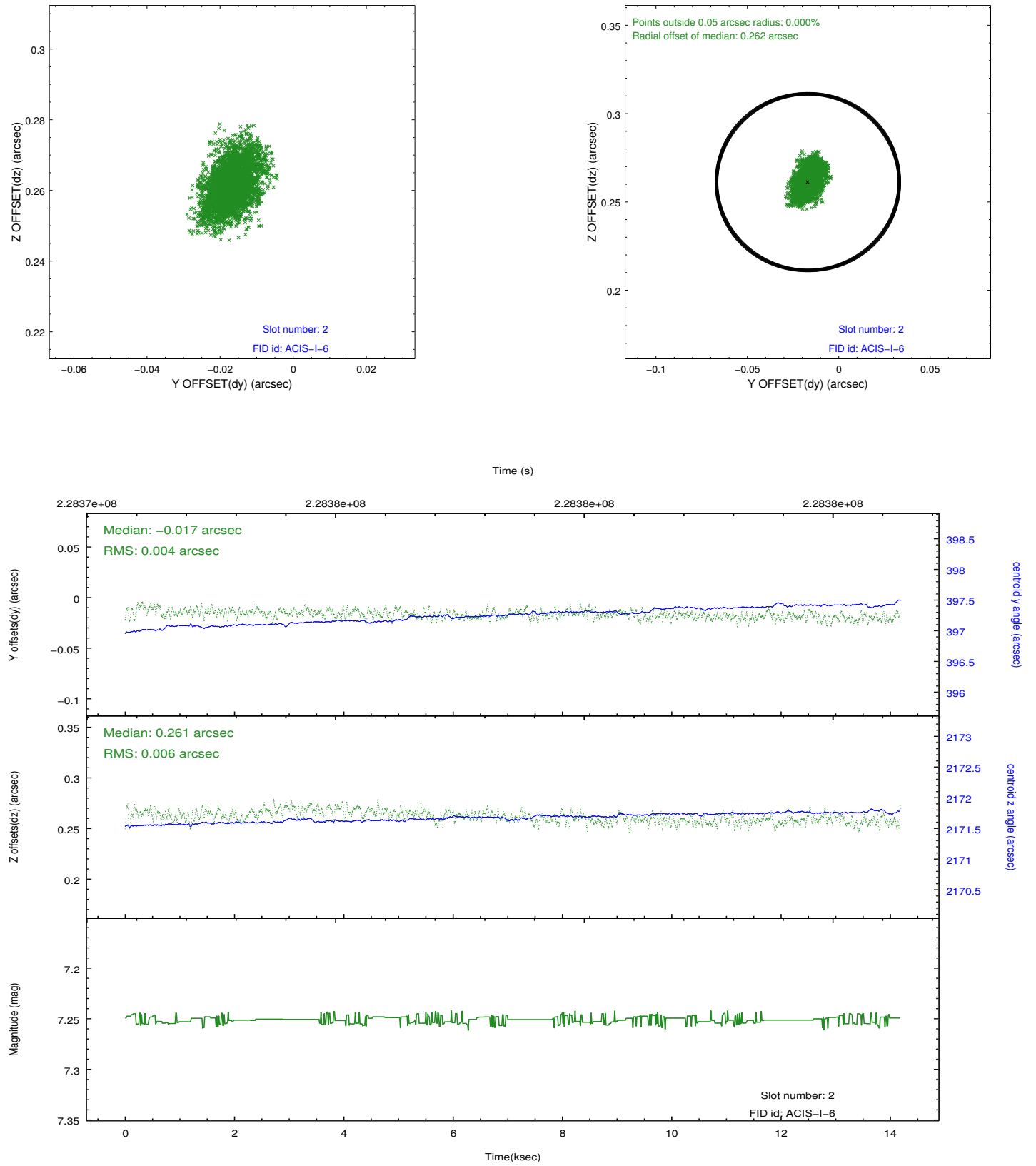
2.5.1 Slot 0



2.5.2 Slot 1



2.5.3 Slot 2



A Summary

A.1 Status

V&V Scientist	Jen Lauer
V&V Date (YYYY-MM-DD)	2013.01.14
V&V Edition	1
V&V Disposition and Status	OK
V&V Charge Time	13.77

A.2 Comments

This observation was performed with a large SIM offset, per PI request. As a result, the fid light positions are offset beyond normally expected ranges, but the fid light position correction has compensated for this offset.