

V&V Reference Report

L2 ASCDS Version : 7.6.8.1

Observation 61281 - L2 Version 001
Chandra X-Ray Center

L2 Processing Date : Sep 2 2006

Contents

1	Front	2
2	OBI	3
2.1	OBI	3
2.1.1	Images	3
2.1.2	Bias	3
2.1.3	Parameters	4
2.1.4	Events	4
2.2	Compared Parameters	5
2.3	Aspect	6
2.4	Star Slots	8
2.5	FID Slots	8
A	Summary	9
A.1	Status	9
A.2	Comments	9

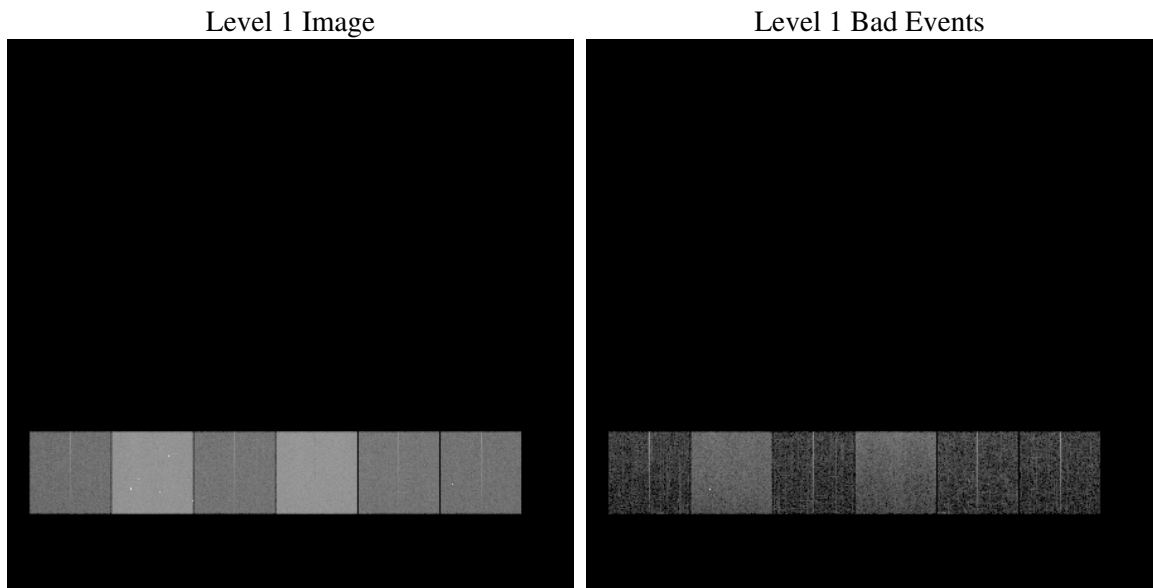
1 Front

seq_num	
obs_id	61281
title	ACIS-456789 diagnostics
observer	CHANDRA engineering request/realtime commanding
object	
dtcycle	0
cycle	P
ra_targ	0.0
dec_targ	0.0
ra_nom	31.061997420557
dec_nom	63.991125648747
roll_nom	309.04370910948
revision	2
ontime	7251.9639878571
livetime	7160.1352532344
ontime4	2609.1315247267
ontime5	7721.9029661268
ontime6	2860.4298683107
ontime7	7251.9639878571
ontime8	2918.7682890594
ontime9	2774.2602148503
l2events	1300269

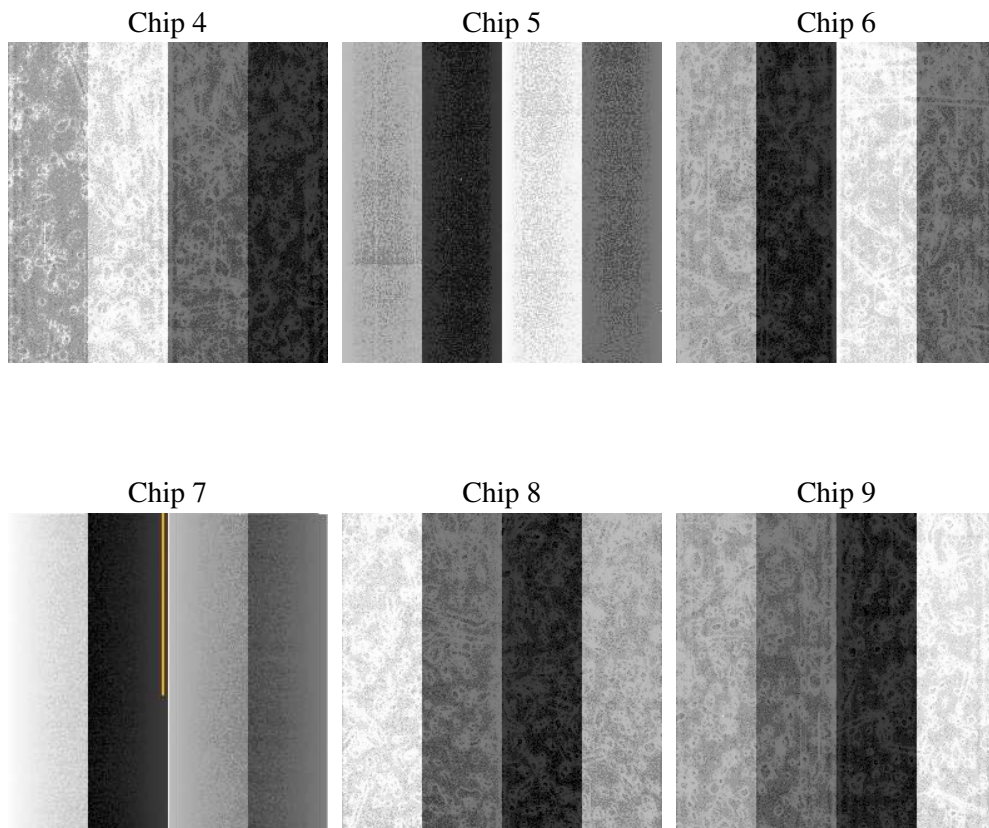
2 OBI

2.1 OBI

2.1.1 Images



2.1.2 Bias



2.1.3 Parameters

obi_num	0
ascdsver	7.6.8.1
caldsver	3.2.3
date	2006-09-02T23:25:56
revision	2

sched_exp_time	0.0
ontime	7256.6104020625
ontime4	2612.275571838
ontime5	7726.5493803322
ontime6	2865.0762825161
ontime7	7256.6104020625
ontime8	2923.4147032648
ontime9	2777.5684219599
l1events	1571771

2.1.4 Events

	ccd 4	ccd 5	ccd 6	ccd 7	ccd 8	ccd 9
level 1 events	156215	432875	182188	441054	189090	170349
rejected events	22229	66635	22261	53811	25407	22138
rejected %	14%	15%	12%	12%	13%	12%

	ccd 4	ccd 5	ccd 6	ccd 7	ccd 8	ccd 9
grade 0 events	75879	45786	87289	71018	90043	82081
	48%	10%	47%	16%	47%	48%
grade 1 events	406	181	474	165	446	419
	0%	0%	0%	0%	0%	0%
grade 2 events	23686	174685	27738	116221	28991	25739
	15%	40%	15%	26%	15%	15%
grade 3 events	8237	12452	9941	29100	10423	9038
	5%	2%	5%	6%	5%	5%
grade 4 events	8224	12201	9859	28552	10241	9054
	5%	2%	5%	6%	5%	5%
grade 5 events	1381	7502	1637	7378	1927	1612
	0%	1%	0%	1%	1%	0%
grade 6 events	18126	121265	25287	142507	24175	22462
	11%	28%	13%	32%	12%	13%
grade 7 events	20276	58803	19963	46113	22844	19944
	12%	13%	10%	10%	12%	11%

2.2 Compared Parameters

Parameter	Planned	Actual	Parameter	Planned	Actual
Instrument	ACIS	ACIS	Obspar format version number	6	6
Detector	ACIS-456789	ACIS-456789	Obspar file type	PREDICTED	ACTUAL
Grating	NONE	NONE	Obspar update status	NONE	UPDATED
Data mode	FAINT	FAINT	On-chip summing requested	N	N
Observation mode	SECONDARY	SECONDARY	Subarray requested	NONE	NONE
Pointing RA	0	31.06199742055663	Alternating exposures requested	N	N
Pointing Dec	0	63.9911256487468	Primary exposure time	3.2	3.2
Pointing Roll	0.0	309.0437091094793			
SIM focus pos (mm)	-0.684267	-0.6828225247311905			
SIM defocus (mm)	0	0.8505141146731063			
SIM translation stage pos (mm)	-190.132523	250.466033080201			
SIM translation stage offset (mm)	0	-0.01005468664627074			
Observation start time	131164963.291653	131164962.52319			
Observation start date	2002-02-27T02:42:43	2002-02-27T02:42:42			
Observation end time	131182835.192376	131182834.42391			
Observation end date	2002-02-27T07:40:35	2002-02-27T07:40:34			
Read mode	TIMED	TIMED			

2.3 Aspect

2.4 Star Slots

2.5 FID Slots

A Summary

A.1 Status

V&V Scientist	Jen Lauer
V&V Date (YYYY-MM-DD)	2006.09.05
V&V Edition	1
V&V Disposition and Status	OK
V&V Charge Time	7.25196398

A.2 Comments