

# V&V Reference Report

## L2 ASCDS Version : 8.4.5

Observation 61081 - L2 Version 3  
Chandra X-Ray Center

L2 Processing Date : Oct 13 2012

## Contents

<b>1</b>	<b>Front</b>	<b>2</b>
<b>2</b>	<b>OBI</b>	<b>3</b>
2.1	OBI . . . . .	3
2.1.1	Images . . . . .	3
2.1.2	Bias . . . . .	3
2.1.3	Parameters . . . . .	4
2.1.4	Events . . . . .	4
2.2	Compared Parameters . . . . .	5
2.3	Star Slots . . . . .	6
2.4	FID Slots . . . . .	6
<b>A</b>	<b>Summary</b>	<b>7</b>
A.1	Status . . . . .	7
A.2	Comments . . . . .	7

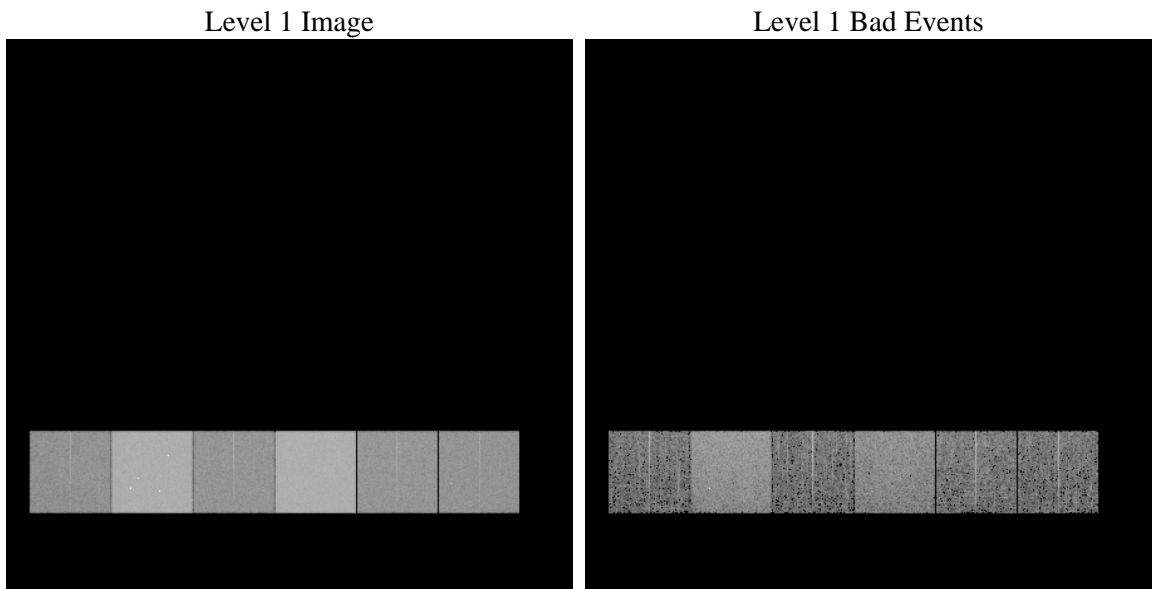
# 1 Front

seq_num	&#160	Sequence number
obs_id	61081	Observation id
title	ACIS-456789 diagnostics	Proposal title
observer	CHANDRA engineering request/realtime commanding	Principal investig
object	&#160	Source name
dtcycle	0	&#160
cycle	P	events from which exps? Prim/Second/Both
ra_targ	0.0	Observer's specified target RA [deg]
dec_targ	0.0	Observer's specified target Dec [deg]
ra_nom	223.77210341865	Nominal RA [deg]
dec_nom	-43.799317763914	Nominal Dec [deg]
roll_nom	251.46010285996	Nominal Roll [deg]
revision	3	Processing version of data
ontime	7438.7764603794	Sum of GTIs [s]
livetime	7344.5821937446	Livetime [s]
ontime4	2695.8618302047	Sum of GTIs [s]
ontime5	7788.7999709845	Sum of GTIs [s]
ontime6	2903.2472102344	Sum of GTIs [s]
ontime7	7438.7764603794	Sum of GTIs [s]
ontime8	2958.4264616668	Sum of GTIs [s]
ontime9	2825.3394492269	Sum of GTIs [s]
l2events	1204891	Number of level 2 events

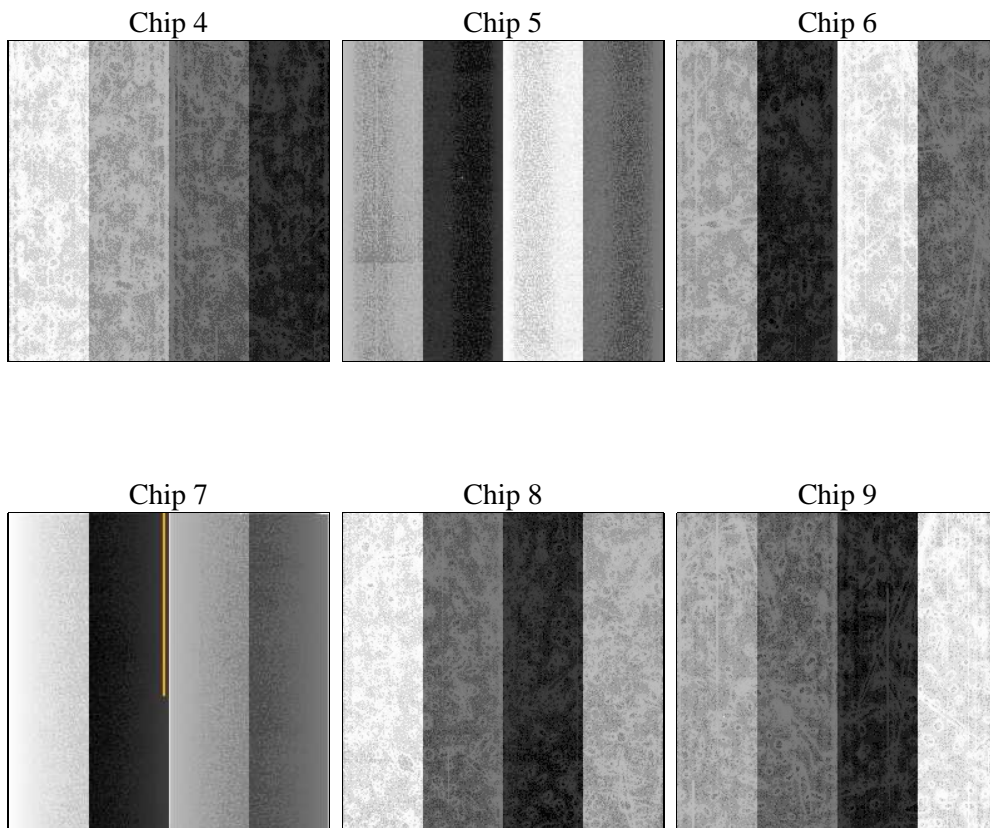
## 2 OBI

### 2.1 OBI

#### 2.1.1 Images



#### 2.1.2 Bias



### 2.1.3 Parameters

obi_num	1	Obi number	sched_exp_time	0.0	[s] Scheduled observation exposure time
ascdsver	8.4.5	Processing system revision	ontime	7438.7764603794	Sum of GTIs [s]
caldsver	4.5.2	&#160	ontime4	2695.8618302047	Sum of GTIs [s]
date	2012-10-14T00:29:14	Date and time of file creation	ontime5	7788.7999709845	Sum of GTIs [s]
revision	3	Processing version of data	ontime6	2903.2472102344	Sum of GTIs [s]
			ontime7	7438.7764603794	Sum of GTIs [s]
			ontime8	2958.4264616668	Sum of GTIs [s]
			ontime9	2825.3394492269	Sum of GTIs [s]
			l1events	1436929	Number of level 1 events

### 2.1.4 Events

	ccd 4	ccd 5	ccd 6	ccd 7	ccd 8	ccd 9		ccd 4	ccd 5	ccd 6	ccd 7	ccd 8	ccd 9
level 1 events	144603	393208	164619	408335	171098	155066	grade 0 events	71961	81698	78398	93804	81433	74554
rejected events	20472	53159	21085	39212	23347	20093		49%	20%	47%	22%	47%	48%
rejected %	14%	13%	12%	9%	13%	12%	grade 1 events	489	234	402	248	430	415
								0%	0%	0%	0%	0%	0%
							grade 2 events	19984	121976	24842	81669	25720	23270
								13%	31%	15%	20%	15%	15%
							grade 3 events	8221	21506	8931	37629	9423	8513
								5%	5%	5%	9%	5%	5%
							grade 4 events	8203	21131	8760	37520	9468	8666
								5%	5%	5%	9%	5%	5%
							grade 5 events	1351	9990	1558	7686	1690	1487
								0%	2%	0%	1%	0%	0%
							grade 6 events	15762	93895	22603	118652	21707	19970
								10%	23%	13%	29%	12%	12%
							grade 7 events	18632	42778	19125	31127	21227	18191
								12%	10%	11%	7%	12%	11%

## 2.2 Compared Parameters

Parameter	Planned	Actual
Instrument	ACIS	ACIS
Detector	ACIS-456789	ACIS-456789
Grating	NONE	NONE
Data mode	FAINT	FAINT
Observation mode	SECONDARY	SECONDARY
[deg] Pointing RA	0	223.7721034186508
[deg] Pointing Dec	0	-43.79931776391374
[deg] Pointing Roll	0.0	251.460102859959
[mm] SIM focus pos	-0.684267	-0.6828225247311905
[mm] SIM defocus	0	0.8505141146731063
[mm] SIM translation stage pos	-190.132523	250.4635187648994
[mm] SIM translation stage offset	0	-0.007540371344731511
[s] Observation start time (MET)	145984057.452867	145984056.42815
Observation start date	2002-08-17T15:07:37	2002-08-17T15:07:36
[s] Observation end time (MET)	146015473.704163	146015472.67944
Observation end date	2002-08-17T23:51:14	2002-08-17T23:51:12
Read mode	TIMED	TIMED

Parameter	Planned	Actual
Obspar format version number	7	7
Obspar file type	PREDICTED	ACTUAL
Obspar update status	NONE	UPDATED
On-chip summing requested	N	N
Subarray requested	NONE	NONE
Alternating exposures requested	N	N
[s] Primary exposure time	0.000000	3.2

## **2.3 Star Slots**

## **2.4 FID Slots**

## A Summary

### A.1 Status

V&V Scientist	Jen Lauer
V&V Date (YYYY-MM-DD)	2012.10.23
V&V Edition	1
V&V Disposition and Status	OK
V&V Charge Time	7.4387764603794

### A.2 Comments