

# V&V Reference Report

## L2 ASCDS Version : 7.6.9

Observation 61051 - L2 Version 001  
Chandra X-Ray Center

L2 Processing Date : Oct 2 2006

## Contents

<b>1</b>	<b>Front</b>	<b>2</b>
<b>2</b>	<b>OBI</b>	<b>3</b>
2.1	OBI . . . . .	3
2.1.1	Images . . . . .	3
2.1.2	Bias . . . . .	3
2.1.3	Parameters . . . . .	4
2.1.4	Events . . . . .	4
2.2	Compared Parameters . . . . .	5
2.3	Aspect . . . . .	6
2.4	Star Slots . . . . .	8
2.5	FID Slots . . . . .	8
<b>A</b>	<b>Summary</b>	<b>9</b>
A.1	Status . . . . .	9
A.2	Comments . . . . .	9

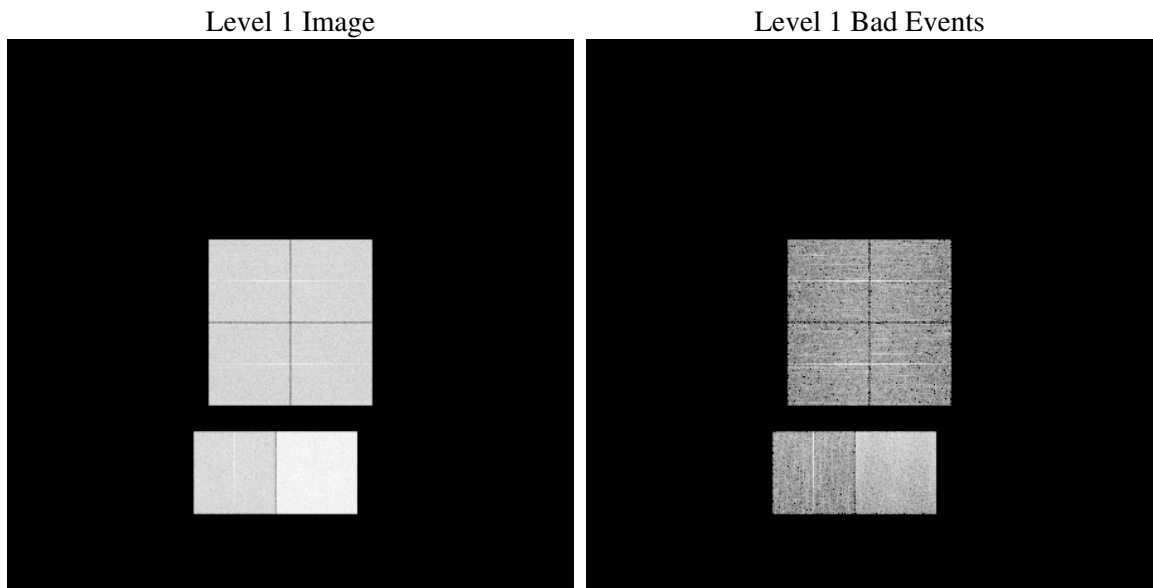
# 1 Front

seq_num	&#160
obs_id	61051
title	ACIS-012367 diagnostics
observer	CHANDRA engineering request/realtime commanding
object	&#160
dtcycle	0
cycle	P
ra_targ	0.0
dec_targ	0.0
ra_nom	289.53148626435
dec_nom	-42.316626085699
roll_nom	291.61795267284
revision	2
ontime	8409.5999686718
livetime	8303.1125502153
ontime0	4032.4967990816
ontime1	4100.598344177
ontime2	3847.8418709338
ontime3	3931.9427081943
ontime6	4193.0925880969
ontime7	8409.5999686718
l2events	1285699

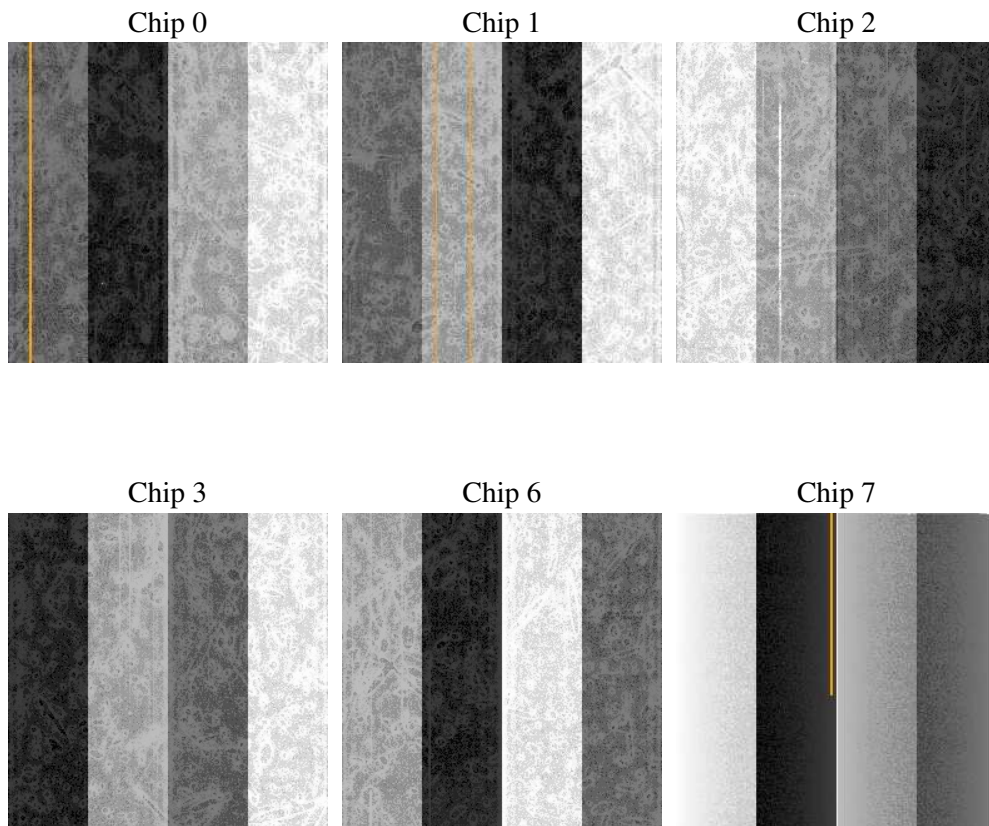
## 2 OBI

### 2.1 OBI

#### 2.1.1 Images



#### 2.1.2 Bias



### 2.1.3 Parameters

obi_num	0
ascdsver	7.6.9
caldbver	3.2.3
date	2006-10-03T00:55:39
revision	2

sched_exp_time	0.0
ontime	8462.2565190792
ontime0	4057.7712200284
ontime1	4129.0727849901
ontime2	3869.7932216823
ontime3	3960.5402591527
ontime6	4219.821356535
ontime7	8462.2565190792
l1events	1553592

### 2.1.4 Events

	ccd 0	ccd 1	ccd 2	ccd 3	ccd 6	ccd 7
level 1 events	216166	220176	210444	214780	236317	455709
rejected events	28123	28678	28897	29165	32122	63497
rejected %	13%	13%	13%	13%	13%	13%

	ccd 0	ccd 1	ccd 2	ccd 3	ccd 6	ccd 7
grade 0 events	104835	105651	103524	105726	111961	67502
	48%	47%	49%	49%	47%	14%
grade 1 events	549	511	579	580	518	170
	0%	0%	0%	0%	0%	0%
grade 2 events	32794	34649	30039	31328	35535	122641
	15%	15%	14%	14%	15%	26%
grade 3 events	12164	12090	11683	12196	12450	27822
	5%	5%	5%	5%	5%	6%
grade 4 events	12056	11882	11886	12259	12509	27089
	5%	5%	5%	5%	5%	5%
grade 5 events	1958	1948	1816	1872	2185	7748
	0%	0%	0%	0%	0%	1%
grade 6 events	27409	28535	25501	25492	33014	149565
	12%	12%	12%	11%	13%	32%
grade 7 events	24401	24910	25416	25327	28145	53172
	11%	11%	12%	11%	11%	11%

## 2.2 Compared Parameters

Parameter	Planned	Actual	Parameter	Planned	Actual
Instrument	ACIS	ACIS	Obspar format version number	6	6
Detector	ACIS-012367	ACIS-012367	Obspar file type	PREDICTED	ACTUAL
Grating	NONE	NONE	Obspar update status	NONE	UPDATED
Data mode	FAINT	FAINT	On-chip summing requested	N	N
Observation mode	SECONDARY	SECONDARY	Subarray requested	NONE	NONE
Pointing RA	0	289.5314862643512	Alternating exposures requested	N	N
Pointing Dec	0	-42.31662608569886	Primary exposure time	0.000000	3.2
Pointing Roll	0.0	291.6179526728383			
SIM focus pos (mm)	-0.782348	-0.7809083437167272			
SIM defocus (mm)	0	0.7524282956875696			
SIM translation stage pos (mm)	-233.592463	250.4635187648994			
SIM translation stage offset (mm)	0	-0.007540371344731511			
Observation start time	147385226.360647	147385225.33594			
Observation start date	2002-09-02T20:20:26	2002-09-02T20:20:25			
Observation end time	147407634.911571	147407633.88686			
Observation end date	2002-09-03T02:33:55	2002-09-03T02:33:53			
Read mode	TIMED	TIMED			

## 2.3 Aspect



## **2.4 Star Slots**

## **2.5 FID Slots**



## A Summary

### A.1 Status

V&V Scientist	Jen Lauer
V&V Date (YYYY-MM-DD)	2006.10.03
V&V Edition	1
V&V Disposition and Status	OK
V&V Charge Time	8.40959996

### A.2 Comments

The ACIS focal plane temperature was above calibration limits for the entire observation.