

# V&V Reference Report

## L2 ASCDS Version : 7.6.9

Observation 61001 - L2 Version 001  
Chandra X-Ray Center

L2 Processing Date : Oct 7 2006

## Contents

<b>1</b>	<b>Front</b>	<b>2</b>
<b>2</b>	<b>OBI</b>	<b>3</b>
2.1	OBI . . . . .	3
2.1.1	Images . . . . .	3
2.1.2	Bias . . . . .	3
2.1.3	Parameters . . . . .	4
2.1.4	Events . . . . .	4
2.2	Compared Parameters . . . . .	5
2.3	Aspect . . . . .	6
2.4	Star Slots . . . . .	8
2.5	FID Slots . . . . .	8
<b>A</b>	<b>Summary</b>	<b>9</b>
A.1	Status . . . . .	9
A.2	Comments . . . . .	9

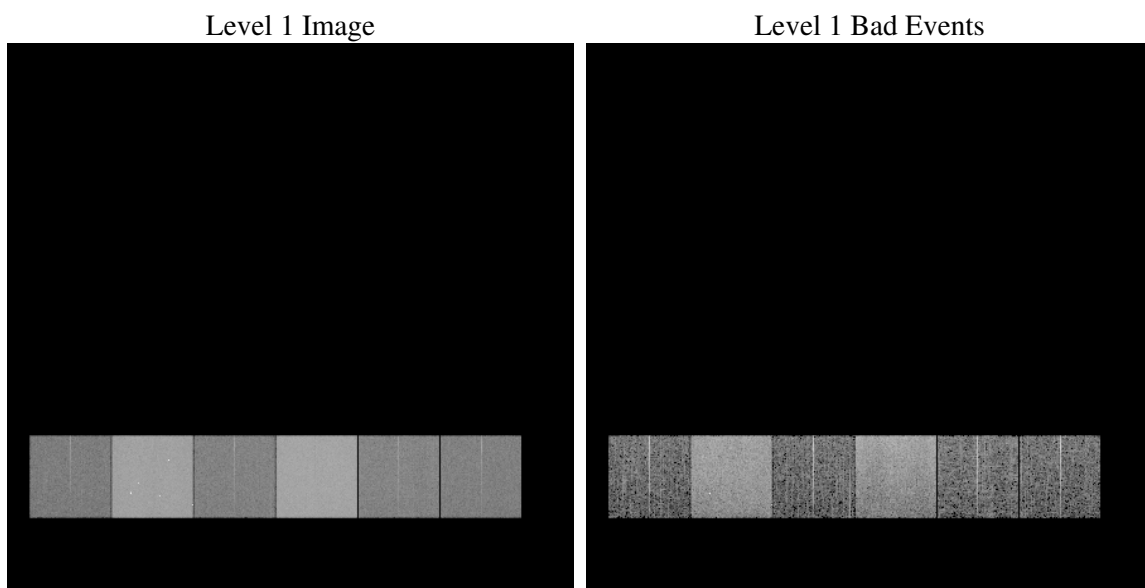
# 1 Front

seq_num	&#160
obs_id	61001
title	ACIS-456789 diagnostics
observer	CHANDRA engineering request/realtime commanding
object	&#160
dtcycle	0
cycle	P
ra_targ	0.0
dec_targ	0.0
ra_nom	0.023799676057139
dec_nom	-0.015868192414615
roll_nom	293.48299505548
revision	2
ontime	8460.7999684811
livetime	8353.664224798
ontime4	2923.1566252112
ontime5	8460.7999684811
ontime6	3214.808028549
ontime7	8460.7999684811
ontime8	3354.2547486424
ontime9	3158.5535828471
l2events	1267954

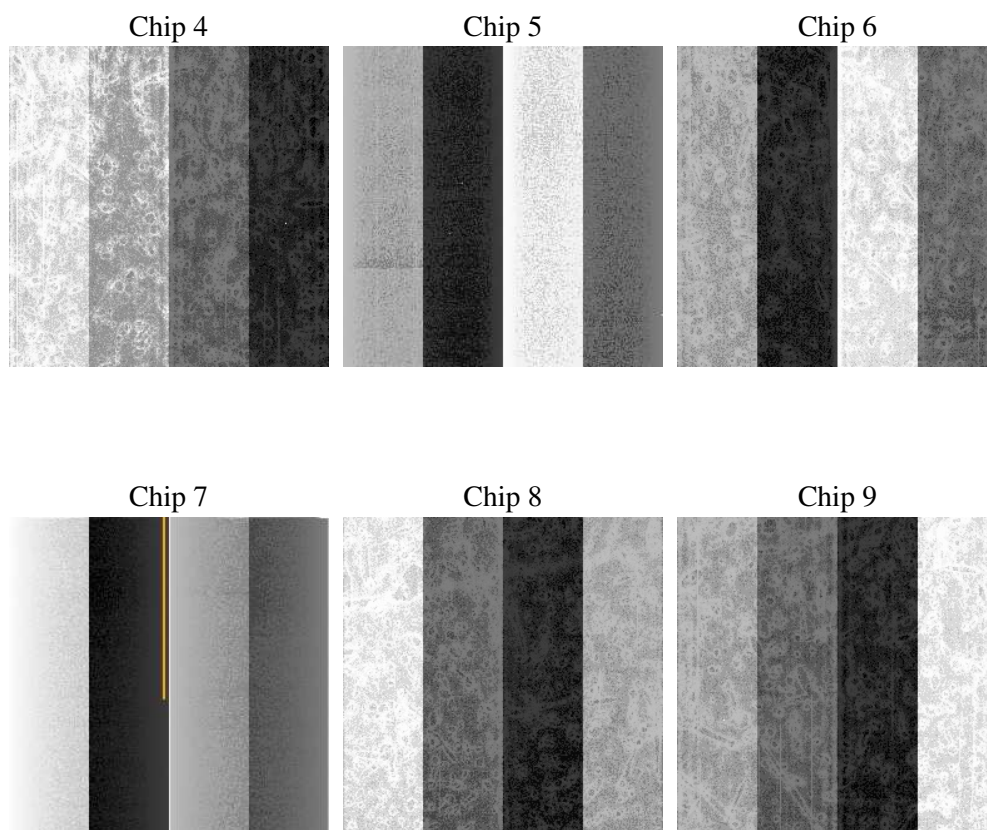
## 2 OBI

### 2.1 OBI

#### 2.1.1 Images



#### 2.1.2 Bias



### 2.1.3 Parameters

obi_num	0
ascdsver	7.6.9
caldsver	3.2.3
date	2006-10-07T14:38:53
revision	2

sched_exp_time	0.0
ontime	8462.2567506731
ontime4	2923.4149737656
ontime5	8462.2567506731
ontime6	3215.1074171066
ontime7	8462.2567506731
ontime8	3354.4720572233
ontime9	3160.0103650391
l1events	1553246

### 2.1.4 Events

	ccd 4	ccd 5	ccd 6	ccd 7	ccd 8	ccd 9
level 1 events	152203	414905	177147	451694	188812	168485
rejected events	23452	68316	23832	61067	27096	23756
rejected %	15%	16%	13%	13%	14%	14%

	ccd 4	ccd 5	ccd 6	ccd 7	ccd 8	ccd 9
grade 0 events	74892	42441	83556	70532	88414	80372
	49%	10%	47%	15%	46%	47%
grade 1 events	582	155	432	180	473	472
	0%	0%	0%	0%	0%	0%
grade 2 events	20634	164964	26401	117692	28438	24719
	13%	39%	14%	26%	15%	14%
grade 3 events	8389	11855	9539	29034	10434	9153
	5%	2%	5%	6%	5%	5%
grade 4 events	8411	11566	9578	28670	10289	9225
	5%	2%	5%	6%	5%	5%
grade 5 events	1585	7455	1773	7881	2048	1806
	1%	1%	1%	1%	1%	1%
grade 6 events	16425	115763	24241	144699	24141	21260
	10%	27%	13%	32%	12%	12%
grade 7 events	21285	60706	21627	53006	24575	21478
	13%	14%	12%	11%	13%	12%

## 2.2 Compared Parameters

Parameter	Planned	Actual	Parameter	Planned	Actual
Instrument	ACIS	ACIS	Obspar format version number	6	6
Detector	ACIS-456789	ACIS-456789	Obspar file type	PREDICTED	ACTUAL
Grating	NONE	NONE	Obspar update status	NONE	UPDATED
Data mode	FAINT	FAINT	On-chip summing requested	N	N
Observation mode	SECONDARY	SECONDARY	Subarray requested	NONE	NONE
Pointing RA	0	0.02379967605713939	Alternating exposures requested	N	N
Pointing Dec	0	-0.01586819241461484	Primary exposure time	3.2	3.2
Pointing Roll	0.0	293.4829950554815			
SIM focus pos (mm)	-0.684267	-0.6828225247311905			
SIM defocus (mm)	0	0.8505141146731063			
SIM translation stage pos (mm)	-190.132523	250.466033080201			
SIM translation stage offset (mm)	0	-0.01005468664627074			
Observation start time	150810626.85235	150810625.82764			
Observation start date	2002-10-12T11:50:27	2002-10-12T11:50:25			
Observation end time	150831936.603233	150831935.57852			
Observation end date	2002-10-12T17:45:37	2002-10-12T17:45:35			
Read mode	TIMED	TIMED			

## 2.3 Aspect



## **2.4 Star Slots**

## **2.5 FID Slots**



## A Summary

### A.1 Status

V&V Scientist	Jen Lauer
V&V Date (YYYY-MM-DD)	2006.10.08
V&V Edition	1
V&V Disposition and Status	OK
V&V Charge Time	8.46079996

### A.2 Comments