

# V&V Reference Report

## L2 ASCDS Version : 7.6.8.1

Observation 60741 - L2 Version 001  
Chandra X-Ray Center

L2 Processing Date : Aug 12 2006

## Contents

<b>1</b>	<b>Front</b>	<b>2</b>
<b>2</b>	<b>OBI</b>	<b>3</b>
2.1	OBI . . . . .	3
2.1.1	Images . . . . .	3
2.1.2	Bias . . . . .	3
2.1.3	Parameters . . . . .	4
2.1.4	Events . . . . .	4
2.2	Compared Parameters . . . . .	5
2.3	Aspect . . . . .	6
2.4	Star Slots . . . . .	8
2.5	FID Slots . . . . .	8
<b>A</b>	<b>Summary</b>	<b>9</b>
A.1	Status . . . . .	9
A.2	Comments . . . . .	9

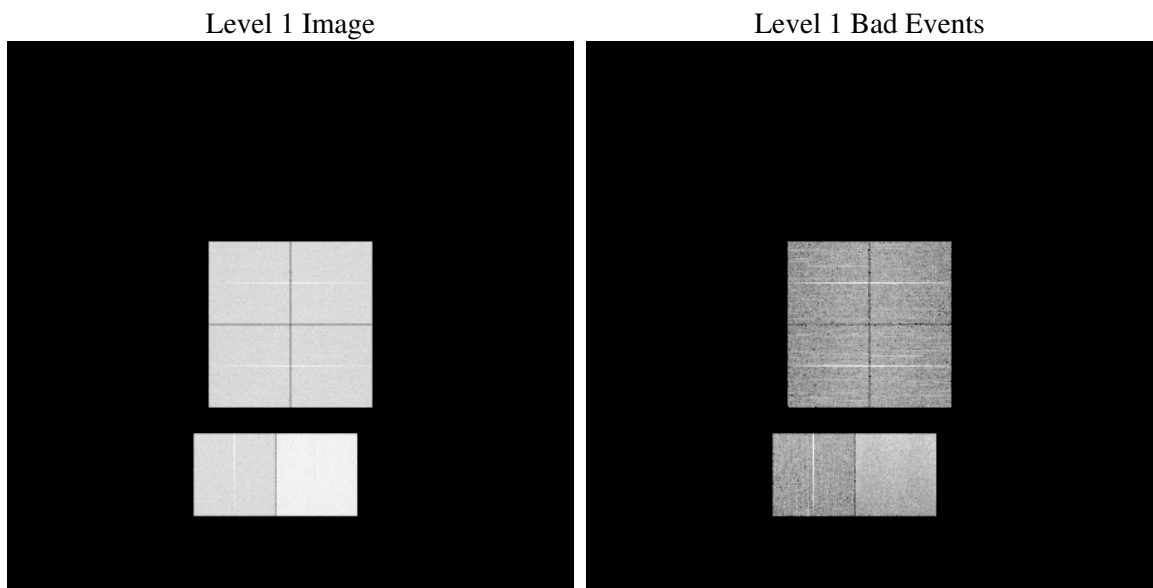
# 1 Front

seq_num	&#160
obs_id	60741
title	ACIS-012367 diagnostics
observer	CHANDRA engineering request/realtime commanding
object	&#160
dtcycle	0
cycle	P
ra_targ	0.0
dec_targ	0.0
ra_nom	267.0260062748
dec_nom	-72.972470547077
roll_nom	41.625454983344
revision	2
ontime	14997.788591087
livetime	14807.877561362
ontime0	8331.1441911757
ontime1	8613.1519750953
ontime2	8049.2591072321
ontime3	8104.1928086877
ontime6	8447.9419512451
ontime7	14997.788591087
l2events	2230221

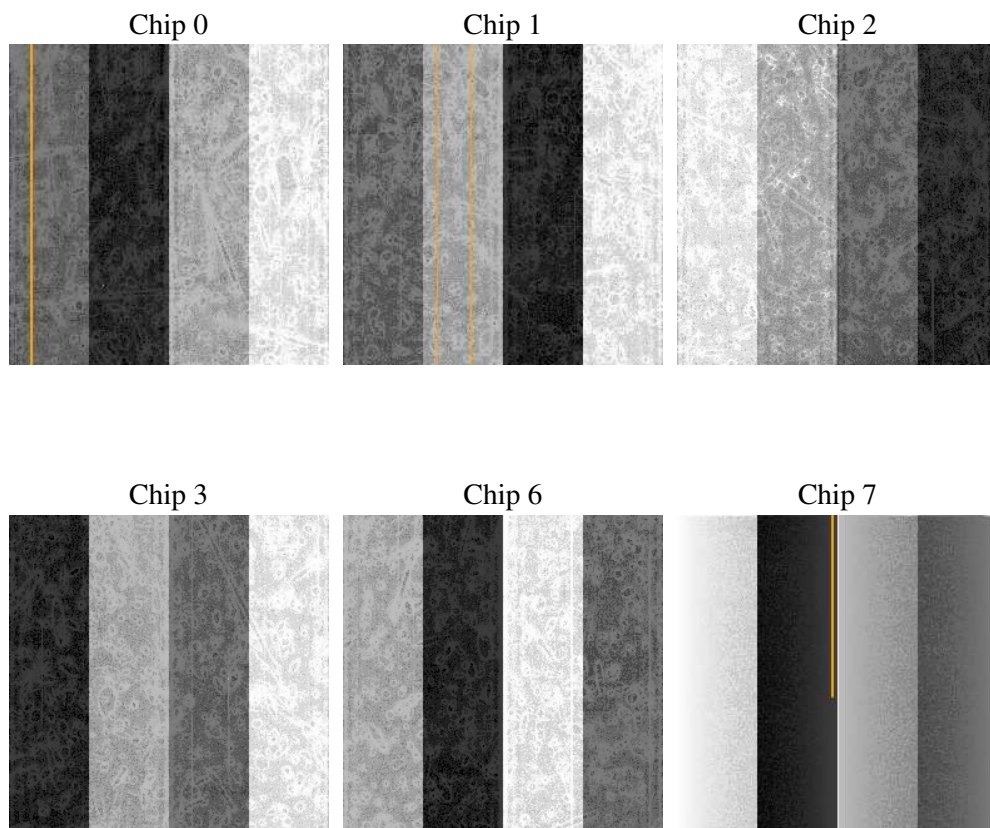
## 2 OBI

### 2.1 OBI

#### 2.1.1 Images



#### 2.1.2 Bias



### 2.1.3 Parameters

obi_num	1
ascdsver	7.6.8.1
caldbver	3.2.3
date	2006-08-12T10:42:28
revision	2

sched_exp_time	0.0
ontime	14999.365064621
ontime0	8332.6796247065
ontime1	8614.6463686228
ontime2	8050.7124607563
ontime3	8105.8103222251
ontime6	8449.3542647958
ontime7	14999.365064621
l1events	2713610

### 2.1.4 Events

	ccd 0	ccd 1	ccd 2	ccd 3	ccd 6	ccd 7
level 1 events	391471	405508	384348	390355	417120	724808
rejected events	54562	55207	55012	57753	58355	100338
rejected %	13%	13%	14%	14%	13%	13%

	ccd 0	ccd 1	ccd 2	ccd 3	ccd 6	ccd 7
grade 0 events	185392	191863	184226	185985	193914	116104
	47%	47%	47%	47%	46%	16%
grade 1 events	1072	943	1123	1099	993	302
	0%	0%	0%	0%	0%	0%
grade 2 events	58371	61860	55436	56735	61613	187175
	14%	15%	14%	14%	14%	25%
grade 3 events	21873	22078	21488	21484	22149	46802
	5%	5%	5%	5%	5%	6%
grade 4 events	21749	22321	21275	21722	22459	46234
	5%	5%	5%	5%	5%	6%
grade 5 events	3899	3861	3549	3825	4138	13254
	0%	0%	0%	0%	0%	1%
grade 6 events	49524	52179	46911	46676	58630	228155
	12%	12%	12%	11%	14%	31%
grade 7 events	49591	50403	50340	52829	53224	86782
	12%	12%	13%	13%	12%	11%

## 2.2 Compared Parameters

Parameter	Planned	Actual	Parameter	Planned	Actual
Instrument	ACIS	ACIS	Obspar format version number	6	6
Detector	ACIS-012367	ACIS-012367	Obspar file type	PREDICTED	ACTUAL
Grating	NONE	NONE	Obspar update status	NONE	UPDATED
Data mode	FAINT	FAINT	On-chip summing requested	N	N
Observation mode	SECONDARY	SECONDARY	Subarray requested	NONE	NONE
Pointing RA	0	267.0260062748038	Alternating exposures requested	N	N
Pointing Dec	0	-72.97247054707729	Primary exposure time	0.000000	3.2
Pointing Roll	0.0	41.62545498334438			
SIM focus pos (mm)	-0.782348	-0.6828225247311905			
SIM defocus (mm)	0	0.8505141146731063			
SIM translation stage pos (mm)	-233.592463	250.466033080201			
SIM translation stage offset (mm)	0	-0.01005468664627074			
Observation start time	169268229.025997	169268228.0013			
Observation start date	2003-05-14T02:57:09	2003-05-14T02:57:08			
Observation end time	169288690.076861	169288689.05216			
Observation end date	2003-05-14T08:38:10	2003-05-14T08:38:09			
Read mode	TIMED	TIMED			

## 2.3 Aspect



## 2.4 Star Slots

## 2.5 FID Slots



## A Summary

### A.1 Status

V&V Scientist	Jen Lauer
V&V Date (YYYY-MM-DD)	2006.08.13
V&V Edition	1
V&V Disposition and Status	OK
V&V Charge Time	14.9977885

### A.2 Comments