

V&V Reference Report

L2 ASCDS Version : 7.6.8

Observation 60731 - L2 Version 001
Chandra X-Ray Center

L2 Processing Date : Aug 3 2006

Contents

1	Front	2
2	OBI	3
2.1	OBI	3
2.1.1	Images	3
2.1.2	Bias	3
2.1.3	Parameters	4
2.1.4	Events	4
2.2	Compared Parameters	5
2.3	Aspect	6
2.4	Star Slots	8
2.5	FID Slots	8
A	Summary	9
A.1	Status	9
A.2	Comments	9

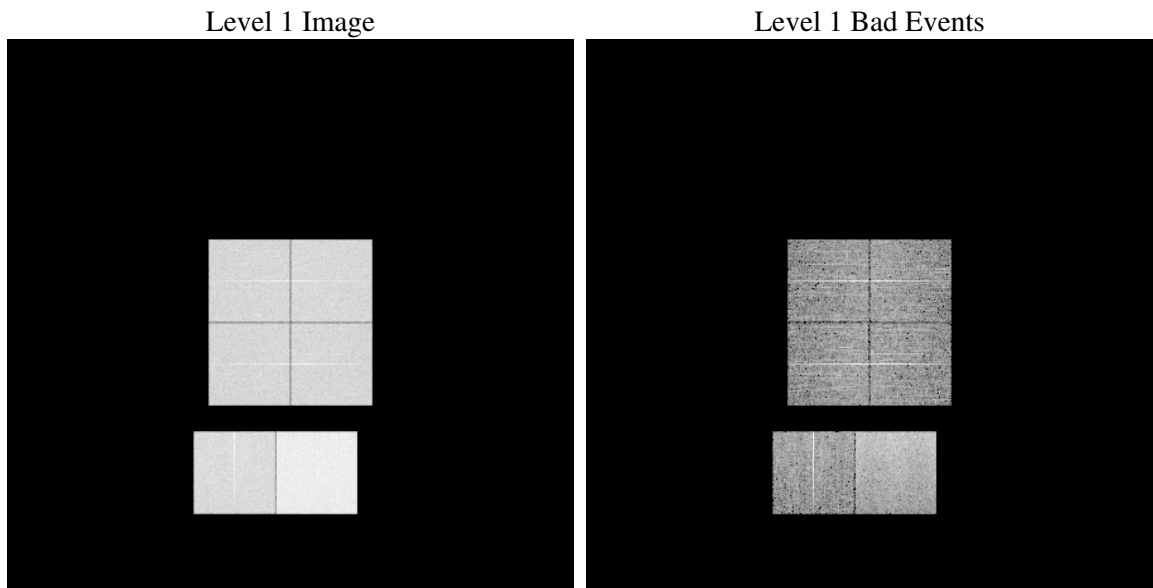
1 Front

seq_num	
obs_id	60731
title	ACIS-012367 diagnostics
observer	CHANDRA engineering request/realtime commanding
object	
dtcycle	0
cycle	P
ra_targ	0.0
dec_targ	0.0
ra_nom	155.51069111314
dec_nom	-31.727114709219
roll_nom	255.60938576653
revision	2
ontime	8462.7708052695
livetime	8355.6101056644
ontime0	4930.1547071338
ontime1	5072.798987031
ontime2	4693.6451709867
ontime3	4816.6386888325
ontime6	5254.3763266802
ontime7	8462.7708052695
l2events	1258592

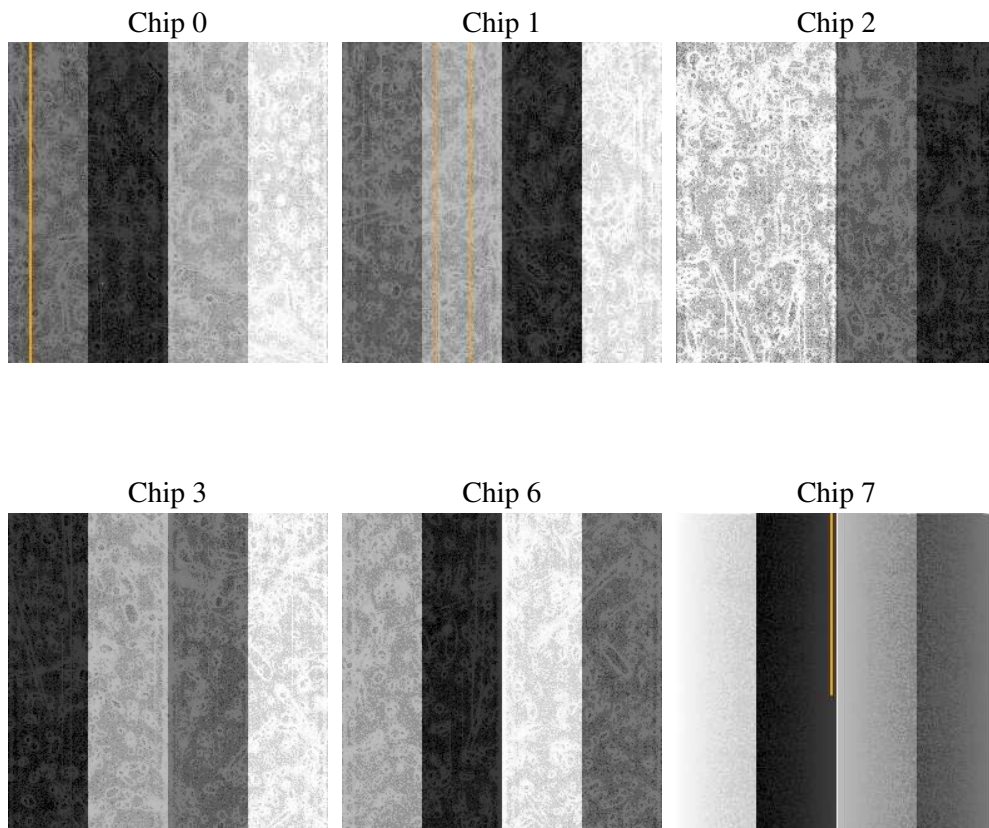
2 OBI

2.1 OBI

2.1.1 Images



2.1.2 Bias



2.1.3 Parameters

obi_num	0
ascdsver	7.6.8
caldbver	3.2.2
date	2006-08-03T09:15:33
revision	2

sched_exp_time	0.0
ontime	8465.4949087203
ontime0	4932.8377705812
ontime1	5075.4410104752
ontime2	4696.2461544275
ontime3	4819.4038322866
ontime6	5256.9362701476
ontime7	8465.4949087203
l1events	1541444

2.1.4 Events

	ccd 0	ccd 1	ccd 2	ccd 3	ccd 6	ccd 7
level 1 events	223729	230804	218637	222669	250744	394861
rejected events	31626	32354	33046	33080	35531	58348
rejected %	14%	14%	15%	14%	14%	14%

	ccd 0	ccd 1	ccd 2	ccd 3	ccd 6	ccd 7
grade 0 events	106138	109321	104372	106768	117361	59799
	47%	47%	47%	47%	46%	15%
grade 1 events	604	539	621	619	581	132
	0%	0%	0%	0%	0%	0%
grade 2 events	33715	34984	31223	32271	37223	102046
	15%	15%	14%	14%	14%	25%
grade 3 events	12428	12388	12241	12236	13358	24612
	5%	5%	5%	5%	5%	6%
grade 4 events	12403	12606	12022	12386	13403	24079
	5%	5%	5%	5%	5%	6%
grade 5 events	2220	2151	2111	2231	2456	7291
	0%	0%	0%	1%	0%	1%
grade 6 events	27557	29275	25863	26066	33985	126089
	12%	12%	11%	11%	13%	31%
grade 7 events	28664	29540	30184	30092	32377	50813
	12%	12%	13%	13%	12%	12%

2.2 Compared Parameters

Parameter	Planned	Actual	Parameter	Planned	Actual
Instrument	ACIS	ACIS	Obspar format version number	6	6
Detector	ACIS-012367	ACIS-012367	Obspar file type	PREDICTED	ACTUAL
Grating	NONE	NONE	Obspar update status	NONE	UPDATED
Data mode	FAINT	FAINT	On-chip summing requested	N	N
Observation mode	SECONDARY	SECONDARY	Subarray requested	NONE	NONE
Pointing RA	0	155.5106911131399	Alternating exposures requested	N	N
Pointing Dec	0	-31.7271147092187	Primary exposure time	0.000000	3.2
Pointing Roll	0.0	255.6093857665343			
SIM focus pos (mm)	-0.782348	-0.7809083437167272			
SIM defocus (mm)	0	0.7524282956875696			
SIM translation stage pos (mm)	-233.592463	250.466033080201			
SIM translation stage offset (mm)	0	-0.01005468664627074			
Observation start time	170003457.457163	170003456.43244			
Observation start date	2003-05-22T15:10:57	2003-05-22T15:10:56			
Observation end time	170026025.90812	170026024.8834			
Observation end date	2003-05-22T21:27:06	2003-05-22T21:27:04			
Read mode	TIMED	TIMED			

2.3 Aspect

2.4 Star Slots

2.5 FID Slots

A Summary

A.1 Status

V&V Scientist	Beth Sundheim
V&V Date (YYYY-MM-DD)	2006.08.03
V&V Edition	1
V&V Disposition and Status	OK
V&V Charge Time	8.4627708

A.2 Comments