

V&V Reference Report

L2 ASCDS Version : 7.6.8

Observation 60561 - L2 Version 001
Chandra X-Ray Center

L2 Processing Date : Jul 6 2006

Contents

1	Front	2
2	OBI	3
2.1	OBI	3
2.1.1	Images	3
2.1.2	Bias	3
2.1.3	Parameters	4
2.1.4	Events	4
2.2	Compared Parameters	5
2.3	Aspect	6
2.4	Star Slots	8
2.5	FID Slots	8
A	Summary	9
A.1	Status	9
A.2	Comments	9

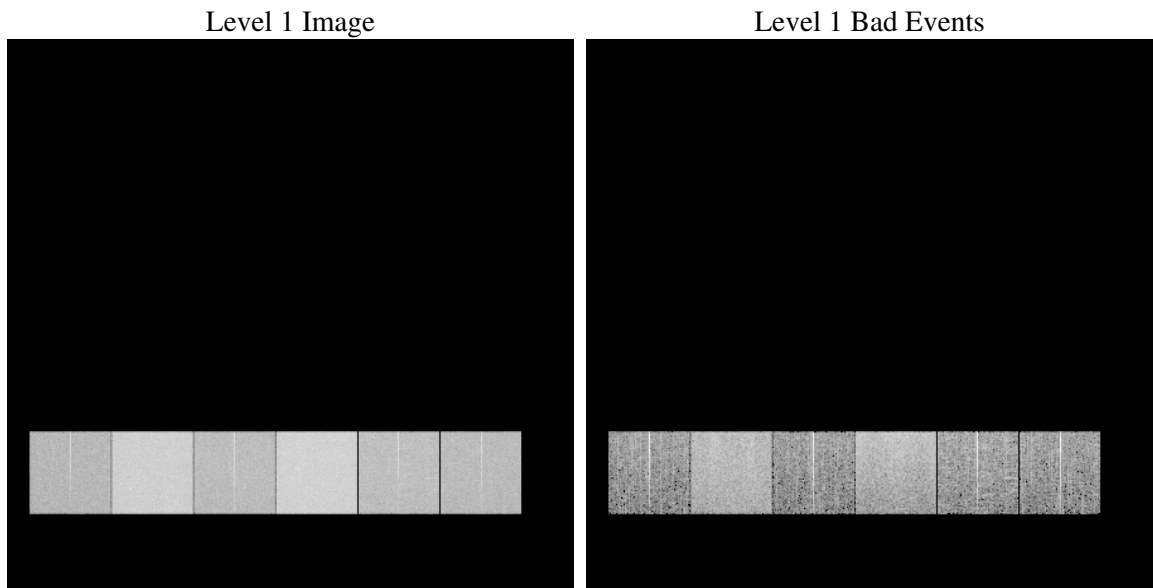
1 Front

seq_num	
obs_id	60561
title	ACIS-456789 diagnostics
observer	CHANDRA engineering request/realtime commanding
object	
dtcycle	0
cycle	P
ra_targ	0.0
dec_targ	0.0
ra_nom	328.05038607217
dec_nom	-55.995139240445
roll_nom	336.92847670361
revision	2
ontime	8460.7999684811
livetime	8353.664224798
ontime4	4318.8276784718
ontime5	8460.7999684811
ontime6	4717.4709472656
ontime7	8460.7999684811
ontime8	4831.1020886898
ontime9	4636.4378447235
l2events	1219213

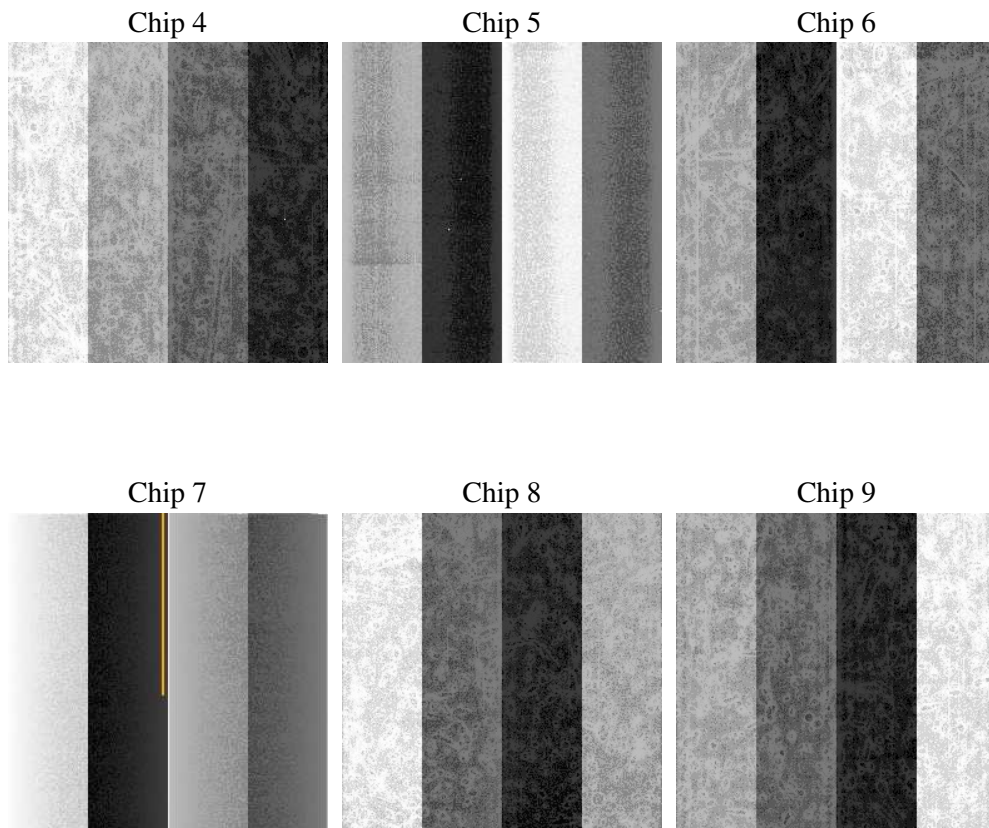
2 OBI

2.1 OBI

2.1.1 Images



2.1.2 Bias



2.1.3 Parameters

obi_num	0
ascdsver	7.6.8
caldbver	3.2.2
date	2006-07-06T07:02:12
revision	2

sched_exp_time	0.0
ontime	8462.2631425261
ontime4	4320.2908525169
ontime5	8462.2631425261
ontime6	4718.9341213107
ontime7	8462.2631425261
ontime8	4832.3685289025
ontime9	4637.9094849229
l1events	1536743

2.1.4 Events

	ccd 4	ccd 5	ccd 6	ccd 7	ccd 8	ccd 9
level 1 events	184597	341477	211731	371746	223734	203458
rejected events	32266	63759	31854	58696	37347	32842
rejected %	17%	18%	15%	15%	16%	16%

	ccd 4	ccd 5	ccd 6	ccd 7	ccd 8	ccd 9
grade 0 events	89409	28021	98134	53829	102490	94505
	48%	8%	46%	14%	45%	46%
grade 1 events	635	109	466	147	500	544
	0%	0%	0%	0%	0%	0%
grade 2 events	23556	134438	31235	96567	32351	29078
	12%	39%	14%	25%	14%	14%
grade 3 events	10218	8672	11018	22337	11997	10910
	5%	2%	5%	6%	5%	5%
grade 4 events	10022	7924	10874	21450	11988	10708
	5%	2%	5%	5%	5%	5%
grade 5 events	1986	6403	2184	7267	2655	2372
	1%	1%	1%	1%	1%	1%
grade 6 events	19126	98663	28616	118867	27561	25415
	10%	28%	13%	31%	12%	12%
grade 7 events	29645	57247	29204	51282	34192	29926
	16%	16%	13%	13%	15%	14%

2.2 Compared Parameters

Parameter	Planned	Actual	Parameter	Planned	Actual
Instrument	ACIS	ACIS	Obspar format version number	6	6
Detector	ACIS-456789	ACIS-456789	Obspar file type	PREDICTED	ACTUAL
Grating	NONE	NONE	Obspar update status	NONE	UPDATED
Data mode	FAINT	FAINT	On-chip summing requested	N	N
Observation mode	SECONDARY	SECONDARY	Subarray requested	NONE	NONE
Pointing RA	0	328.0503860721685	Alternating exposures requested	N	N
Pointing Dec	0	-55.99513924044534	Primary exposure time	0.000000	3.2
Pointing Roll	0.0	336.9284767036103			
SIM focus pos (mm)	-0.684267	-0.6828225247311905			
SIM defocus (mm)	0	0.8505141146731063			
SIM translation stage pos (mm)	-190.132523	250.466033080201			
SIM translation stage offset (mm)	0	-0.01005468664627074			
Observation start time	179374163.656432	179374162.63173			
Observation start date	2003-09-08T02:09:24	2003-09-08T02:09:22			
Observation end time	179396816.157402	179396815.1327			
Observation end date	2003-09-08T08:26:56	2003-09-08T08:26:55			
Read mode	TIMED	TIMED			

2.3 Aspect

2.4 Star Slots

2.5 FID Slots

A Summary

A.1 Status

V&V Scientist	Jen Lauer
V&V Date (YYYY-MM-DD)	2006.07.06
V&V Edition	1
V&V Disposition and Status	OK
V&V Charge Time	8.46079996

A.2 Comments

The ACIS focal plane temperature decreases by more than a degree during the observation, and is above calibration limits for the first 5 ksec of the obsid.