

V&V Reference Report

L2 ASCDS Version : 7.6.8

Observation 60491 - L2 Version 001
Chandra X-Ray Center

L2 Processing Date : Jun 30 2006

Contents

1	Front	2
2	OBI	3
2.1	OBI	3
2.1.1	Images	3
2.1.2	Bias	3
2.1.3	Parameters	4
2.1.4	Events	4
2.2	Compared Parameters	5
2.3	Aspect	6
2.4	Star Slots	8
2.5	FID Slots	8
A	Summary	9
A.1	Status	9
A.2	Comments	9

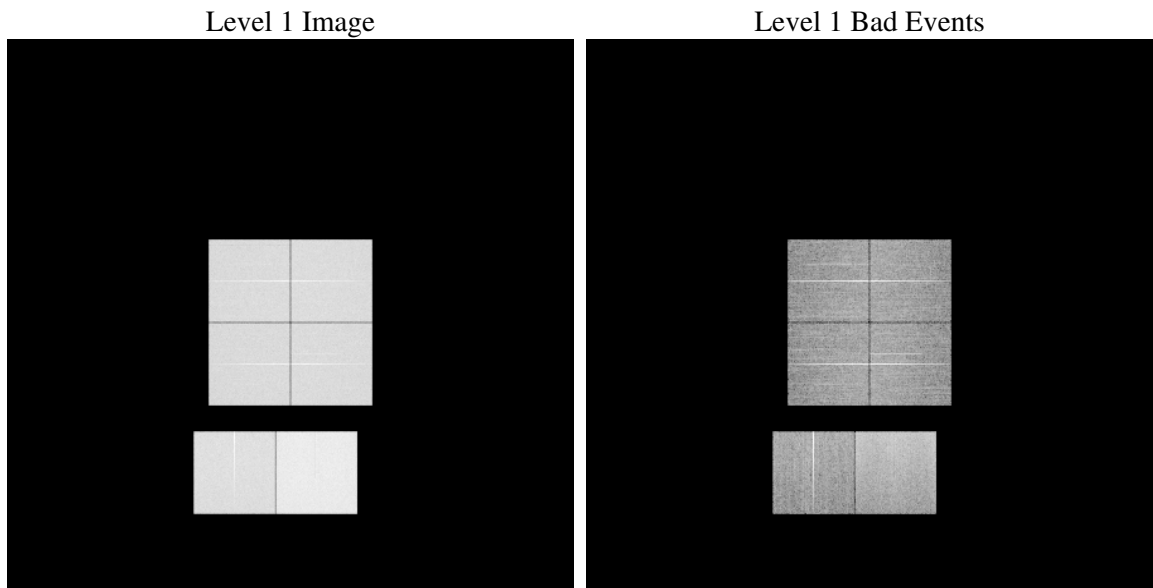
1 Front

seq_num	
obs_id	60491
title	ACIS-012367 diagnostics
observer	CHANDRA engineering request/realtime commanding
object	
dtcycle	0
cycle	P
ra_targ	0.0
dec_targ	0.0
ra_nom	295.42638839323
dec_nom	-61.42565018868
roll_nom	263.33953090488
revision	2
ontime	25097.599906504
livetime	24779.798984528
ontime0	16881.759421855
ontime1	17256.628132075
ontime2	16245.486715108
ontime3	16540.25183323
ontime6	17886.459538907
ontime7	25097.599906504
l2events	3710594

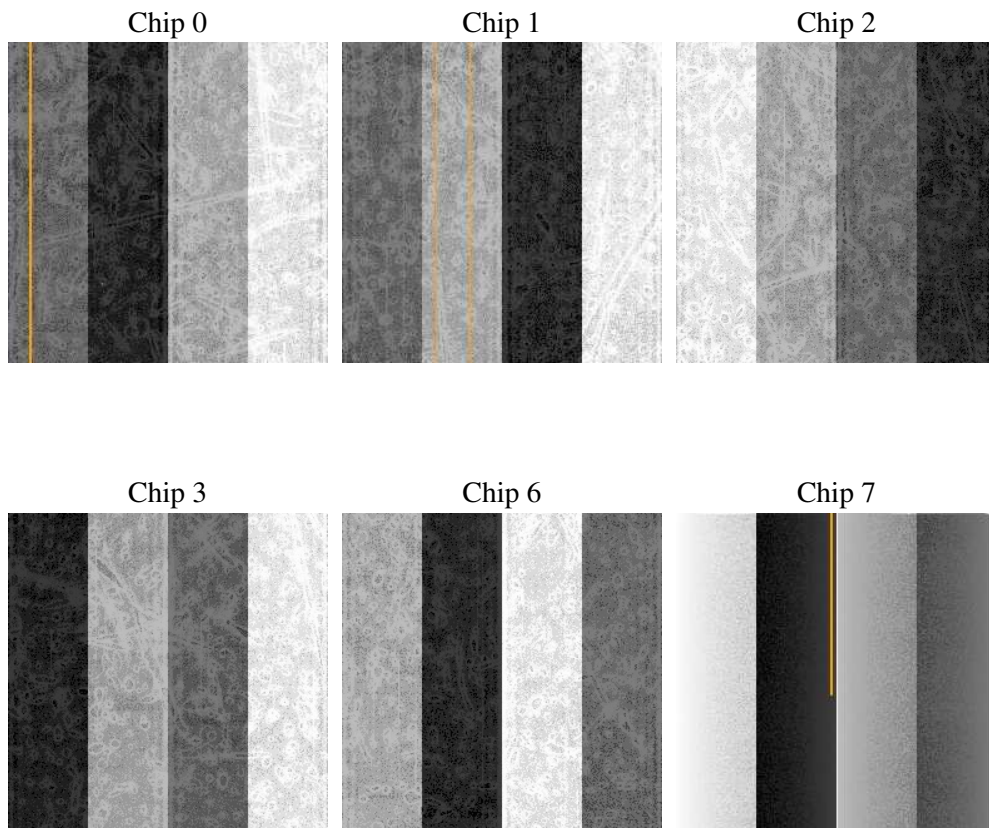
2 OBI

2.1 OBI

2.1.1 Images



2.1.2 Bias



2.1.3 Parameters

obi_num	2
ascdsver	7.6.8
caldbver	3.2.2
date	2006-06-30T15:38:11
revision	2

sched_exp_time	0.0
ontime	25172.835890591
ontime0	16931.067624003
ontime1	17310.258980662
ontime2	16299.076463878
ontime3	16587.523831338
ontime6	17932.526830554
ontime7	25172.835890591
l1events	4514578

2.1.4 Events

	ccd 0	ccd 1	ccd 2	ccd 3	ccd 6	ccd 7
level 1 events	680786	696802	666558	679771	756669	1033992
rejected events	91745	93156	93028	96141	101169	150808
rejected %	13%	13%	13%	14%	13%	14%

	ccd 0	ccd 1	ccd 2	ccd 3	ccd 6	ccd 7
grade 0 events	326381	333033	323512	329781	358934	157445
	47%	47%	48%	48%	47%	15%
grade 1 events	1570	1419	1623	1581	1456	379
	0%	0%	0%	0%	0%	0%
grade 2 events	103152	107380	97161	99710	113203	269944
	15%	15%	14%	14%	14%	26%
grade 3 events	38378	38524	37407	37939	40612	64342
	5%	5%	5%	5%	5%	6%
grade 4 events	37869	38480	37317	37938	40674	63344
	5%	5%	5%	5%	5%	6%
grade 5 events	6439	6582	5965	6506	7295	18962
	0%	0%	0%	0%	0%	1%
grade 6 events	85012	88120	80349	80014	103889	330878
	12%	12%	12%	11%	13%	32%
grade 7 events	81985	83264	83224	86302	90606	128698
	12%	11%	12%	12%	11%	12%

2.2 Compared Parameters

Parameter	Planned	Actual	Parameter	Planned	Actual
Instrument	ACIS	ACIS	Obspar format version number	6	6
Detector	ACIS-012367	ACIS-012367	Obspar file type	PREDICTED	ACTUAL
Grating	NONE	NONE	Obspar update status	NONE	UPDATED
Data mode	FAINT	FAINT	On-chip summing requested	N	N
Observation mode	SECONDARY	SECONDARY	Subarray requested	NONE	NONE
Pointing RA	0	295.426388393231	Alternating exposures requested	N	N
Pointing Dec	0	-61.42565018867969	Primary exposure time	0.000000	3.2
Pointing Roll	0.0	263.3395309048752			
SIM focus pos (mm)	-0.782348	-0.6828225247311905			
SIM defocus (mm)	0	0.8505141146731063			
SIM translation stage pos (mm)	-233.592463	250.466033080201			
SIM translation stage offset (mm)	0	-0.01005468664627074			
Observation start time	184593845.18086	184593844.15614			
Observation start date	2003-11-07T12:04:05	2003-11-07T12:04:04			
Observation end time	184678157.584521	184678156.55979			
Observation end date	2003-11-08T11:29:18	2003-11-08T11:29:16			
Read mode	TIMED	TIMED			

2.3 Aspect

2.4 Star Slots

2.5 FID Slots

A Summary

A.1 Status

V&V Scientist	Beth Sundheim
V&V Date (YYYY-MM-DD)	2006.06.30
V&V Edition	1
V&V Disposition and Status	OK
V&V Charge Time	25.0975999

A.2 Comments