

# V&V Reference Report

## L2 ASCDS Version : 8.4.5

Observation 60351 - L2 Version 3  
Chandra X-Ray Center

L2 Processing Date : Nov 12 2012

## Contents

<b>1</b>	<b>Front</b>	<b>2</b>
<b>2</b>	<b>OBI</b>	<b>3</b>
2.1	OBI . . . . .	3
2.1.1	Images . . . . .	3
2.1.2	Bias . . . . .	3
2.1.3	Parameters . . . . .	4
2.1.4	Events . . . . .	4
2.2	Compared Parameters . . . . .	5
2.3	Star Slots . . . . .	6
2.4	FID Slots . . . . .	6
<b>A</b>	<b>Summary</b>	<b>7</b>
A.1	Status . . . . .	7
A.2	Comments . . . . .	7

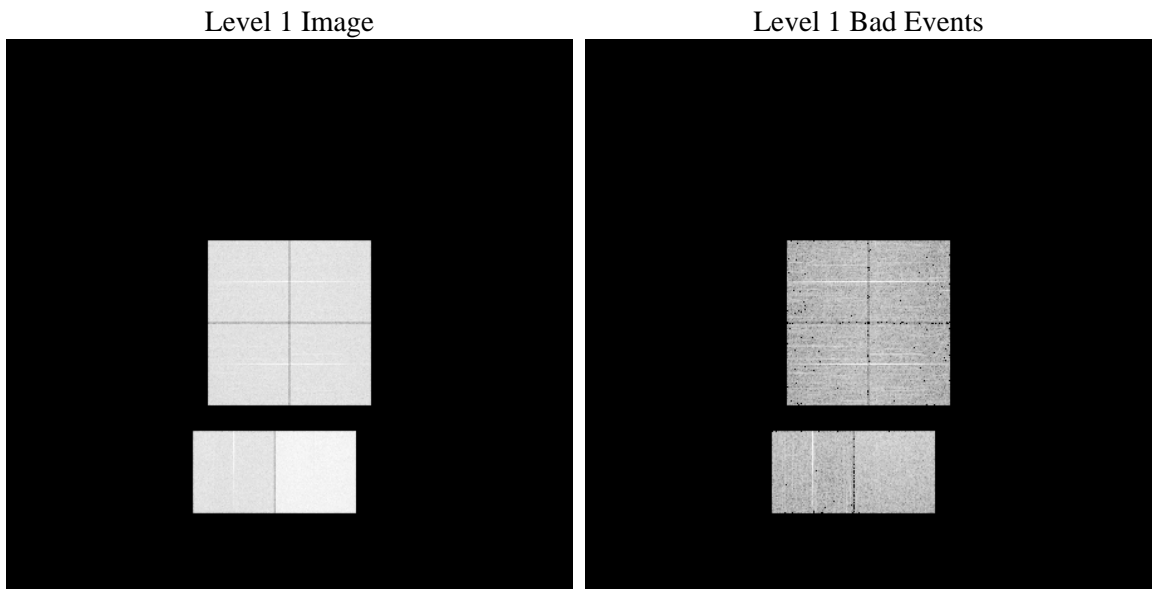
# 1 Front

seq_num	&#160	Sequence number
obs_id	60351	Observation id
title	ACIS-012367 diagnostics	Proposal title
observer	CHANDRA engineering request/realtime commanding	Principal investig
object	&#160	Source name
dtcycle	0	&#160
cycle	P	events from which exps? Prim/Second/Both
ra_targ	0.0	Observer's specified target RA [deg]
dec_targ	0.0	Observer's specified target Dec [deg]
ra_nom	164.02623000113	Nominal RA [deg]
dec_nom	-23.984362697577	Nominal Dec [deg]
roll_nom	0.25391183847058	Nominal Roll [deg]
revision	3	Processing version of data
ontime	7746.503406167	Sum of GTIs [s]
livetime	7648.4125156538	Livetime [s]
ontime0	4395.3302500546	Sum of GTIs [s]
ontime1	4468.9416623116	Sum of GTIs [s]
ontime2	4265.6910413504	Sum of GTIs [s]
ontime3	4371.5883977711	Sum of GTIs [s]
ontime6	4494.9505675733	Sum of GTIs [s]
ontime7	7746.503406167	Sum of GTIs [s]
l2events	1154782	Number of level 2 events

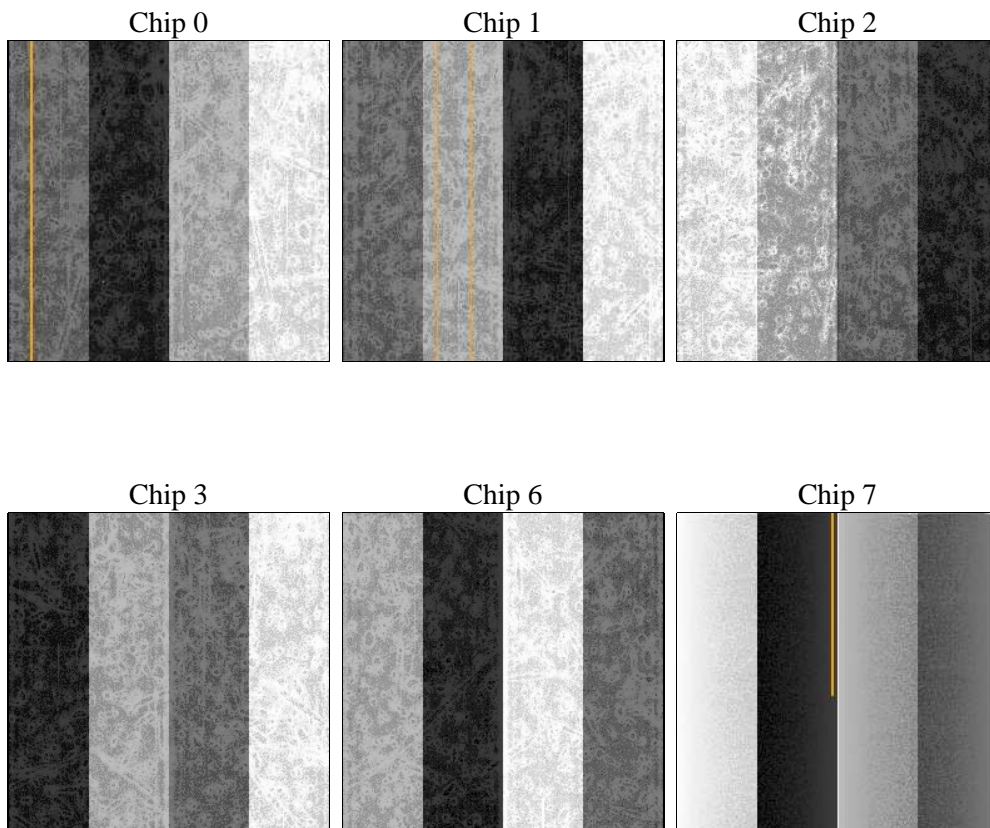
## 2 OBI

### 2.1 OBI

#### 2.1.1 Images



#### 2.1.2 Bias



### 2.1.3 Parameters

obi_num	0	Obi number	sched_exp_time	0.0	[s] Scheduled observation exposure time
ascdsver	8.4.5	Processing system revision	ontime	7746.503406167	Sum of GTIs [s]
caldsver	4.5.2	&#160	ontime0	4395.3302500546	Sum of GTIs [s]
date	2012-11-12T20:20:34	Date and time of file creation	ontime1	4468.9416623116	Sum of GTIs [s]
revision	3	Processing version of data	ontime2	4265.6910413504	Sum of GTIs [s]
			ontime3	4371.5883977711	Sum of GTIs [s]
			ontime6	4494.9505675733	Sum of GTIs [s]
			ontime7	7746.503406167	Sum of GTIs [s]
			l1events	1431285	Number of level 1 events

### 2.1.4 Events

	ccd 0	ccd 1	ccd 2	ccd 3	ccd 6	ccd 7		ccd 0	ccd 1	ccd 2	ccd 3	ccd 6	ccd 7
level 1 events	206738	210556	201426	208159	218946	385460	grade 0 events	93926	94767	92819	95961	96545	84961
rejected events	34913	34174	34573	34665	37440	48162		45%	45%	46%	46%	44%	22%
rejected %	16%	16%	17%	16%	17%	12%	grade 1 events	697	583	714	693	654	257
								0%	0%	0%	0%	0%	0%
							grade 2 events	29355	31563	27630	28799	30982	72846
								14%	14%	13%	13%	14%	18%
							grade 3 events	10878	10991	10567	11158	11010	31803
								5%	5%	5%	5%	5%	8%
							grade 4 events	10743	10999	10766	11136	10850	31198
								5%	5%	5%	5%	4%	8%
							grade 5 events	2217	2206	2057	2263	2437	8432
								1%	1%	1%	1%	1%	2%
							grade 6 events	27091	28062	25239	26440	32119	116652
								13%	13%	12%	12%	14%	30%
							grade 7 events	31831	31385	31634	31709	34349	39311
								15%	14%	15%	15%	15%	10%

## 2.2 Compared Parameters

Parameter	Planned	Actual
Instrument	ACIS	ACIS
Detector	ACIS-012367	ACIS-012367
Grating	NONE	NONE
Data mode	FAINT	FAINT
Observation mode	SECONDARY	SECONDARY
[deg] Pointing RA	0	164.0262300011323
[deg] Pointing Dec	0	-23.98436269757722
[deg] Pointing Roll	0.0	0.2539118384705823
[mm] SIM focus pos	-0.782348	-0.7809083437167272
[mm] SIM defocus	0	0.7524282956875696
[mm] SIM translation stage pos	-233.592463	250.466033080201
[mm] SIM translation stage offset	0	-0.01005468664627074
[s] Observation start time (MET)	194644376.518455	194644375.49374
Observation start date	2004-03-02T19:52:57	2004-03-02T19:52:55
[s] Observation end time (MET)	194679685.720002	194679684.69529
Observation end date	2004-03-03T05:41:26	2004-03-03T05:41:24
Read mode	TIMED	TIMED

Parameter	Planned	Actual
Obspar format version number	7	7
Obspar file type	PREDICTED	ACTUAL
Obspar update status	NONE	UPDATED
On-chip summing requested	N	N
Subarray requested	NONE	NONE
Alternating exposures requested	N	N
[s] Primary exposure time	0.000000	3.2

## 2.3 Star Slots

## 2.4 FID Slots

## A Summary

### A.1 Status

V&V Scientist	Beth Sundheim
V&V Date (YYYY-MM-DD)	2012.12.20
V&V Edition	1
V&V Disposition and Status	OK
V&V Charge Time	7.746503406167

### A.2 Comments