

V&V Reference Report

L2 ASCDS Version : 8.4.5

Observation 60271 - L2 Version 3
Chandra X-Ray Center

L2 Processing Date : Nov 30 2012

Contents

1	Front	2
2	OBI	3
2.1	OBI	3
2.1.1	Images	3
2.1.2	Bias	3
2.1.3	Parameters	4
2.1.4	Events	4
2.2	Compared Parameters	5
2.3	Star Slots	6
2.4	FID Slots	6
A	Summary	7
A.1	Status	7
A.2	Comments	7

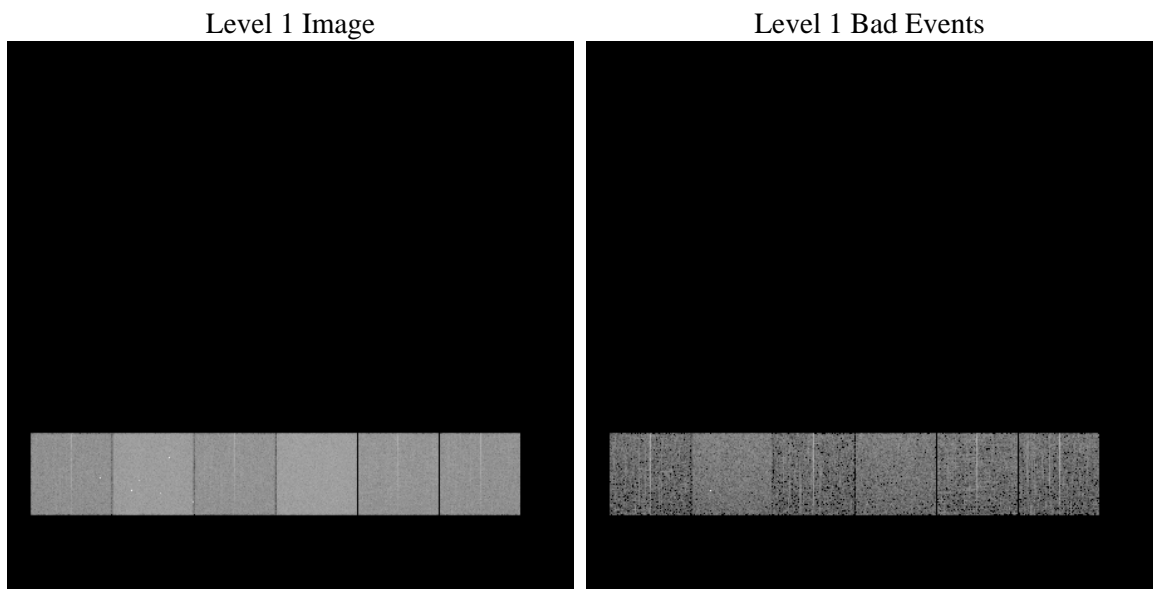
1 Front

seq_num	 	Sequence number
obs_id	60271	Observation id
title	ACIS-456789 diagnostics	Proposal title
observer	CHANDRA engineering request/realtime commanding	Principal investig
object	 	Source name
dtcycle	0	
cycle	P	events from which exps? Prim/Second/Both
ra_targ	0.0	Observer's specified target RA [deg]
dec_targ	0.0	Observer's specified target Dec [deg]
ra_nom	261.97698951141	Nominal RA [deg]
dec_nom	9.017553536454	Nominal Dec [deg]
roll_nom	109.33443429228	Nominal Roll [deg]
revision	3	Processing version of data
ontime	4060.5660189092	Sum of GTIs [s]
livetime	4009.1486869985	Livetime [s]
ontime4	2521.5134534836	Sum of GTIs [s]
ontime5	4060.5249789059	Sum of GTIs [s]
ontime6	2686.8031067252	Sum of GTIs [s]
ontime7	4060.5660189092	Sum of GTIs [s]
ontime8	2757.5320127308	Sum of GTIs [s]
ontime9	2621.6167108417	Sum of GTIs [s]
l2events	578274	Number of level 2 events

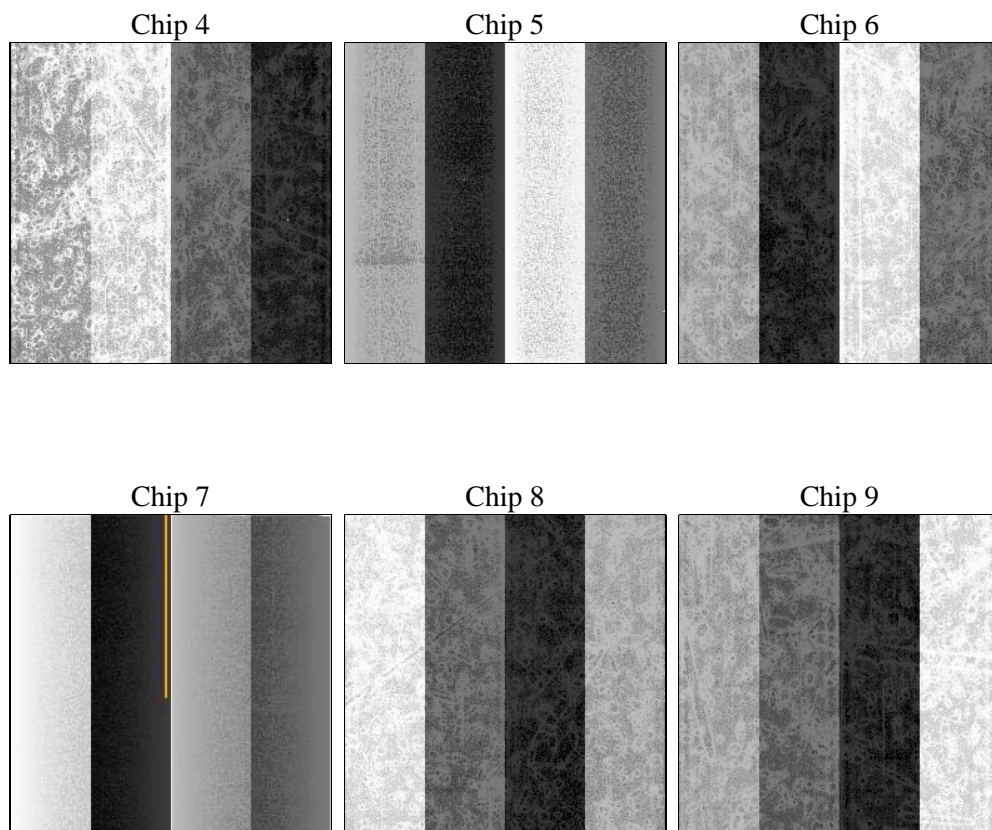
2 OBI

2.1 OBI

2.1.1 Images



2.1.2 Bias



2.1.3 Parameters

obi_num	0	Obi number	sched_exp_time	0.0	[s] Scheduled observation exposure time
ascdsver	8.4.5	Processing system revision	ontime	4060.5660189092	Sum of GTIs [s]
caldsver	4.5.2	 	ontime4	2521.5134534836	Sum of GTIs [s]
date	2012-11-29T21:52:46	Date and time of file creation	ontime5	4060.5249789059	Sum of GTIs [s]
revision	3	Processing version of data	ontime6	2686.8031067252	Sum of GTIs [s]
			ontime7	4060.5660189092	Sum of GTIs [s]
			ontime8	2757.5320127308	Sum of GTIs [s]
			ontime9	2621.6167108417	Sum of GTIs [s]
			l1events	748731	Number of level 1 events

2.1.4 Events

	ccd 4	ccd 5	ccd 6	ccd 7	ccd 8	ccd 9		ccd 4	ccd 5	ccd 6	ccd 7	ccd 8	ccd 9
level 1 events	97672	154859	109660	165526	116305	104709	grade 0 events	45608	28131	48239	34552	50812	46039
rejected events	19418	29313	20189	24299	22823	20571		46%	18%	43%	20%	43%	43%
rejected %	19%	18%	18%	14%	19%	19%	grade 1 events	360	123	222	106	285	279
								0%	0%	0%	0%	0%	0%
							grade 2 events	12335	45187	15528	31058	16411	14584
								12%	29%	14%	18%	14%	13%
							grade 3 events	5228	7565	5604	13868	6018	5521
								5%	4%	5%	8%	5%	5%
							grade 4 events	5133	7522	5560	13961	6020	5433
								5%	4%	5%	8%	5%	5%
							grade 5 events	1240	5127	1408	4512	1669	1391
								1%	3%	1%	2%	1%	1%
							grade 6 events	9950	37141	14540	47788	14221	12561
								10%	23%	13%	28%	12%	11%
							grade 7 events	17818	24063	18559	19681	20869	18901
								18%	15%	16%	11%	17%	18%

2.2 Compared Parameters

Parameter	Planned	Actual
Instrument	ACIS	ACIS
Detector	ACIS-456789	ACIS-456789
Grating	NONE	NONE
Data mode	FAINT	FAINT
Observation mode	SECONDARY	SECONDARY
[deg] Pointing RA	0	261.9769895114073
[deg] Pointing Dec	0	9.017553536453983
[deg] Pointing Roll	0.0	109.3344342922842
[mm] SIM focus pos	-0.684267	-0.6828225247311905
[mm] SIM defocus	0	0.8505141146731063
[mm] SIM translation stage pos	-190.132523	250.466033080201
[mm] SIM translation stage offset	0	-0.01005468664627074
[s] Observation start time (MET)	198754942.39934	198754941.37434
Observation start date	2004-04-19T09:42:22	2004-04-19T09:42:21
[s] Observation end time (MET)	198770305.100017	198770304.07502
Observation end date	2004-04-19T13:58:25	2004-04-19T13:58:24
Read mode	TIMED	TIMED

Parameter	Planned	Actual
Obspar format version number	7	7
Obspar file type	PREDICTED	ACTUAL
Obspar update status	NONE	UPDATED
On-chip summing requested	N	N
Subarray requested	NONE	NONE
Alternating exposures requested	N	N
[s] Primary exposure time	0.000000	3.2

2.3 Star Slots

2.4 FID Slots

A Summary

A.1 Status

V&V Scientist	Beth Sundheim
V&V Date (YYYY-MM-DD)	2012.12.10
V&V Edition	1
V&V Disposition and Status	OK
V&V Charge Time	4.0605660189092

A.2 Comments