

V&V Reference Report

L2 ASCDS Version : 7.6.7.2

Observation 60271 - L2 Version 001
Chandra X-Ray Center

L2 Processing Date : May 25 2006

Contents

1	Front	2
2	OBI	3
2.1	OBI	3
2.1.1	Images	3
2.1.2	Bias	3
2.1.3	Parameters	4
2.1.4	Events	4
2.2	Compared Parameters	5
2.3	Aspect	6
2.4	Star Slots	8
2.5	FID Slots	8
A	Summary	9
A.1	Status	9
A.2	Comments	9

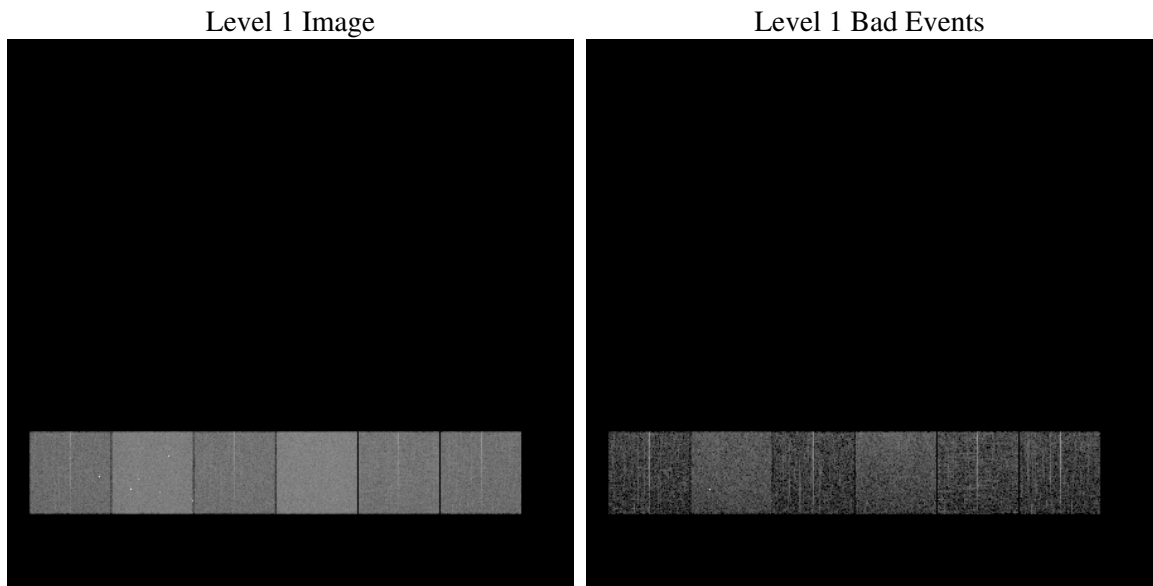
1 Front

seq_num	
obs_id	60271
title	ACIS-456789 diagnostics
observer	CHANDRA engineering request/realtime commanding
object	
dtcycle	0
cycle	P
ra_targ	0.0
dec_targ	0.0
ra_nom	261.97699879201
dec_nom	9.0175273144934
roll_nom	109.33443283013
revision	2
ontime	4059.6079847217
livetime	4008.2027840167
ontime4	2520.2705394626
ontime5	4059.649024725
ontime6	2685.5191527009
ontime7	4059.6079847217
ontime8	2756.9022985101
ontime9	2620.5765966475
l2events	570319

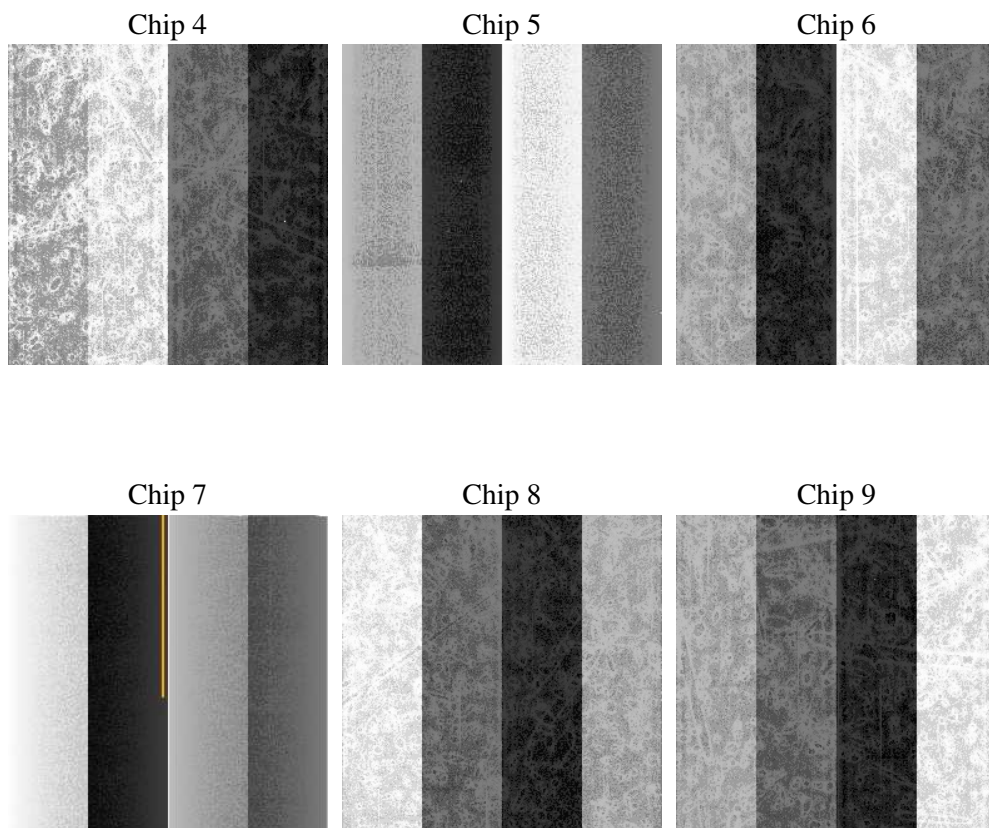
2 OBI

2.1 OBI

2.1.1 Images



2.1.2 Bias



2.1.3 Parameters

obi_num	0
ascdsver	7.6.7.2
caldsver	3.2.2
date	2006-05-25T19:08:19
revision	2

sched_exp_time	0.0
ontime	4060.9740187526
ontime4	2521.5134534836
ontime5	4060.9740187526
ontime6	2686.8031067252
ontime7	4060.9740187526
ontime8	2758.1041725576
ontime9	2621.9836706817
l1events	748731

2.1.4 Events

	ccd 4	ccd 5	ccd 6	ccd 7	ccd 8	ccd 9
level 1 events	97672	154859	109660	165526	116305	104709
rejected events	19418	32546	20189	29356	22823	20571
rejected %	19%	21%	18%	17%	19%	19%

	ccd 4	ccd 5	ccd 6	ccd 7	ccd 8	ccd 9
grade 0 events	45609	14504	48240	24309	50814	46039
	46%	9%	43%	14%	43%	43%
grade 1 events	360	64	222	64	285	279
	0%	0%	0%	0%	0%	0%
grade 2 events	12334	57044	15527	40486	16409	14584
	12%	36%	14%	24%	14%	13%
grade 3 events	5228	3999	5605	9725	6018	5521
	5%	2%	5%	5%	5%	5%
grade 4 events	5133	3927	5560	9850	6020	5433
	5%	2%	5%	5%	5%	5%
grade 5 events	1240	3700	1408	3612	1670	1391
	1%	2%	1%	2%	1%	1%
grade 6 events	9950	42839	14539	51800	14221	12561
	10%	27%	13%	31%	12%	11%
grade 7 events	17818	28782	18559	25680	20868	18901
	18%	18%	16%	15%	17%	18%

2.2 Compared Parameters

Parameter	Planned	Actual	Parameter	Planned	Actual
Instrument	ACIS	ACIS	Obspar format version number	6	6
Detector	ACIS-456789	ACIS-456789	Obspar file type	PREDICTED	ACTUAL
Grating	NONE	NONE	Obspar update status	NONE	UPDATED
Data mode	FAINT	FAINT	On-chip summing requested	N	N
Observation mode	SECONDARY	SECONDARY	Subarray requested	NONE	NONE
Pointing RA	0	261.9769987920126	Alternating exposures requested	N	N
Pointing Dec	0	9.017527314493417	Primary exposure time	0.000000	3.2
Pointing Roll	0.0	109.3344328301322			
SIM focus pos (mm)	-0.684267	-0.6828225247311905			
SIM defocus (mm)	0	0.8505141146731063			
SIM translation stage pos (mm)	-190.132523	250.466033080201			
SIM translation stage offset (mm)	0	-0.01005468664627074			
Observation start time	198754942.39934	198754941.37434			
Observation start date	2004-04-19T09:42:22	2004-04-19T09:42:21			
Observation end time	198770305.100017	198770304.07502			
Observation end date	2004-04-19T13:58:25	2004-04-19T13:58:24			
Read mode	TIMED	TIMED			

2.3 Aspect

2.4 Star Slots

2.5 FID Slots

A Summary

A.1 Status

V&V Scientist	Beth Sundheim
V&V Date (YYYY-MM-DD)	2006.05.25
V&V Edition	1
V&V Disposition and Status	OK
V&V Charge Time	4.05960798

A.2 Comments