

V&V Reference Report

L2 ASCDS Version : 7.6.7.1

Observation 60031 - L2 Version 001
Chandra X-Ray Center

L2 Processing Date : Apr 16 2006

Contents

1	Front	2
2	OBI	3
2.1	OBI	3
2.1.1	Images	3
2.1.2	Bias	3
2.1.3	Parameters	4
2.1.4	Events	4
2.2	Compared Parameters	5
2.3	Aspect	6
2.4	Star Slots	8
2.5	FID Slots	8
A	Summary	9
A.1	Status	9
A.2	Comments	9

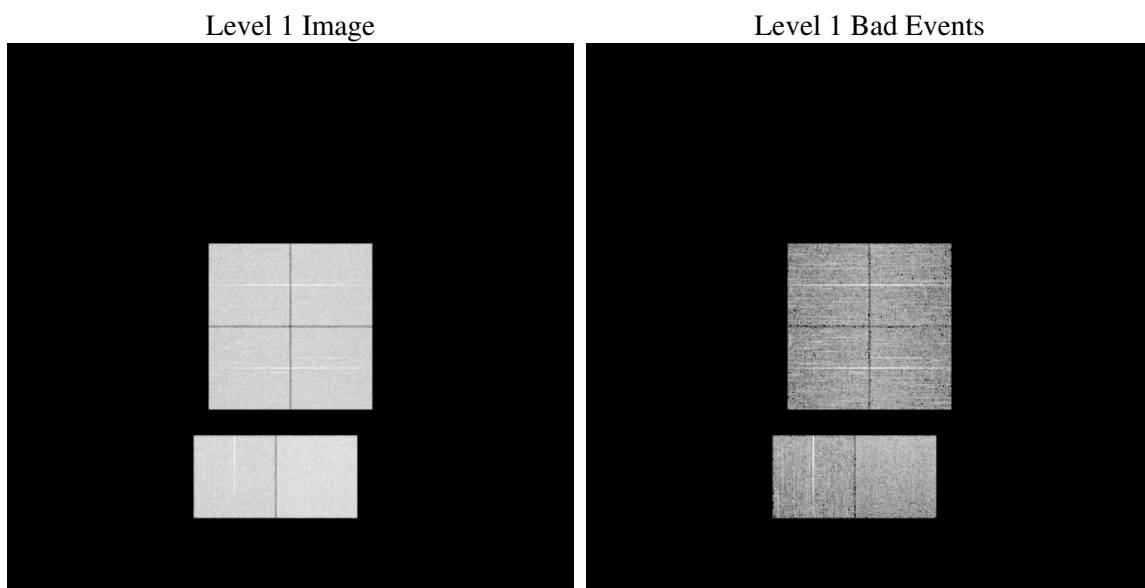
1 Front

seq_num	
obs_id	60031
title	ACIS-012367 diagnostics
observer	CHANDRA engineering request/realtime commanding
object	
dtcycle	0
cycle	P
ra_targ	0.0
dec_targ	0.0
ra_nom	195.65685638114
dec_nom	-63.217990407522
roll_nom	195.41080473148
revision	2
ontime	7798.3999709487
livetime	7699.6519348838
ontime0	6220.051571101
ontime1	6438.5773096681
ontime2	5981.6420017779
ontime3	6145.5098533332
ontime6	6563.5935212076
ontime7	7798.3999709487
l2events	1074377

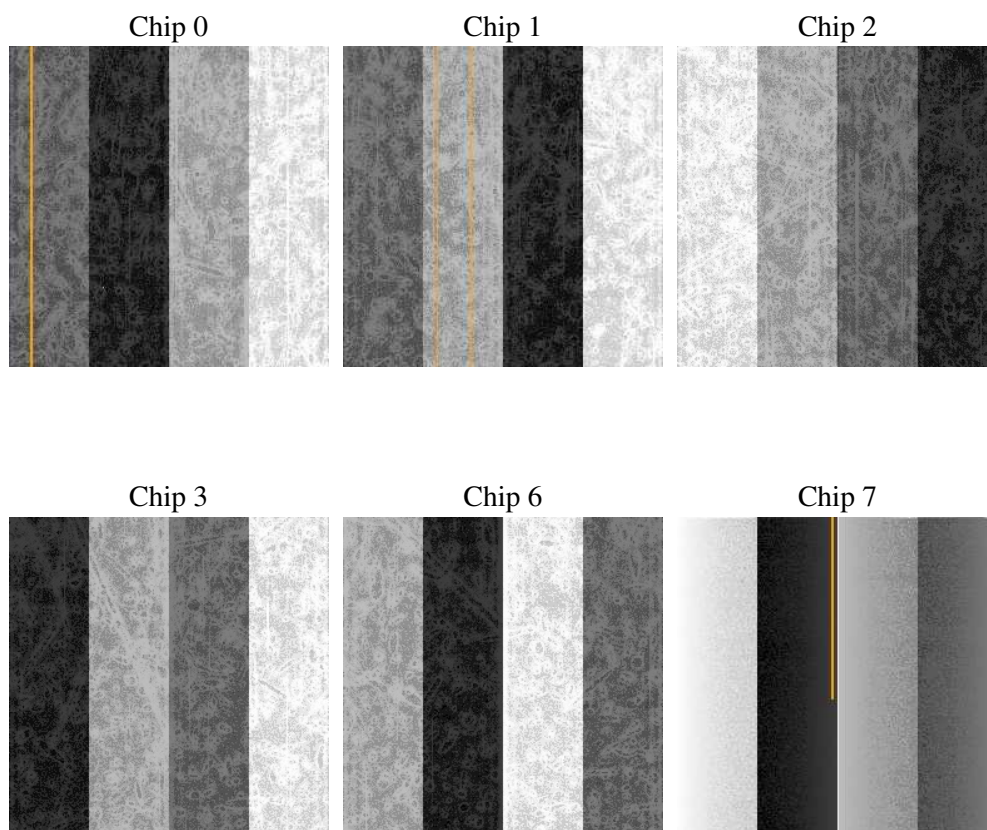
2 OBI

2.1 OBI

2.1.1 Images



2.1.2 Bias



2.1.3 Parameters

obi_num	0
ascdsver	7.6.7.1
caldsver	3.2.1
date	2006-04-17T01:20:49
revision	2

sched_exp_time	0.0
ontime	7801.0855886936
ontime0	6222.7371888459
ontime1	6439.8820366859
ontime2	5982.9056887925
ontime3	6148.1954710782
ontime6	6566.2791389525
ontime7	7801.0855886936
l1events	1412905

2.1.4 Events

	ccd 0	ccd 1	ccd 2	ccd 3	ccd 6	ccd 7
level 1 events	218650	225589	214875	221451	241841	290499
rejected events	43562	44536	44881	46402	48312	56955
rejected %	19%	19%	20%	20%	19%	19%

	ccd 0	ccd 1	ccd 2	ccd 3	ccd 6	ccd 7
grade 0 events	96051	99224	94738	97881	105357	39357
	43%	43%	44%	44%	43%	13%
grade 1 events	568	511	611	603	530	124
	0%	0%	0%	0%	0%	0%
grade 2 events	30810	32205	28719	30103	33491	70825
	14%	14%	13%	13%	13%	24%
grade 3 events	11496	11557	11171	11363	12018	16572
	5%	5%	5%	5%	4%	5%
grade 4 events	11282	11650	11268	11502	11814	16078
	5%	5%	5%	5%	4%	5%
grade 5 events	2809	3004	2518	2902	3187	6883
	1%	1%	1%	1%	1%	2%
grade 6 events	25449	26417	24098	24200	30849	90712
	11%	11%	11%	10%	12%	31%
grade 7 events	40185	41021	41752	42897	44595	49948
	18%	18%	19%	19%	18%	17%

2.2 Compared Parameters

Parameter	Planned	Actual	Parameter	Planned	Actual
Instrument	ACIS	ACIS	Obspar format version number	6	6
Detector	ACIS-012367	ACIS-012367	Obspar file type	PREDICTED	ACTUAL
Grating	NONE	NONE	Obspar update status	NONE	UPDATED
Data mode	FAINT	FAINT	On-chip summing requested	N	N
Observation mode	SECONDARY	SECONDARY	Subarray requested	NONE	NONE
Pointing RA	0	195.6568563811361	Alternating exposures requested	N	N
Pointing Dec	0	-63.21799040752189	Primary exposure time	3.2	3.2
Pointing Roll	0.0	195.4108047314835			
SIM focus pos (mm)	-0.782348	-0.7809083437167272			
SIM defocus (mm)	0	0.7524282956875696			
SIM translation stage pos (mm)	-233.592463	250.466033080201			
SIM translation stage offset (mm)	0	-0.01005468664627074			
Observation start time	212458766.607164	212458765.58216			
Observation start date	2004-09-25T00:19:27	2004-09-25T00:19:25			
Observation end time	212499282.808976	212499281.78397			
Observation end date	2004-09-25T11:34:43	2004-09-25T11:34:41			
Read mode	TIMED	TIMED			

2.3 Aspect

2.4 Star Slots

2.5 FID Slots

A Summary

A.1 Status

V&V Scientist	Jen Lauer
V&V Date (YYYY-MM-DD)	2006.04.17
V&V Edition	1
V&V Disposition and Status	OK
V&V Charge Time	7.79839997

A.2 Comments