

V&V Reference Report

L2 ASCDS Version : 8.5

Observation 60001 - L2 Version 3
Chandra X-Ray Center

L2 Processing Date : Dec 10 2012

Contents

1	Front	2
2	OBI	3
2.1	OBI	3
2.1.1	Images	3
2.1.2	Bias	3
2.1.3	Parameters	4
2.1.4	Events	4
2.2	Compared Parameters	5
2.3	Star Slots	6
2.4	FID Slots	6
A	Summary	7
A.1	Status	7
A.2	Comments	7

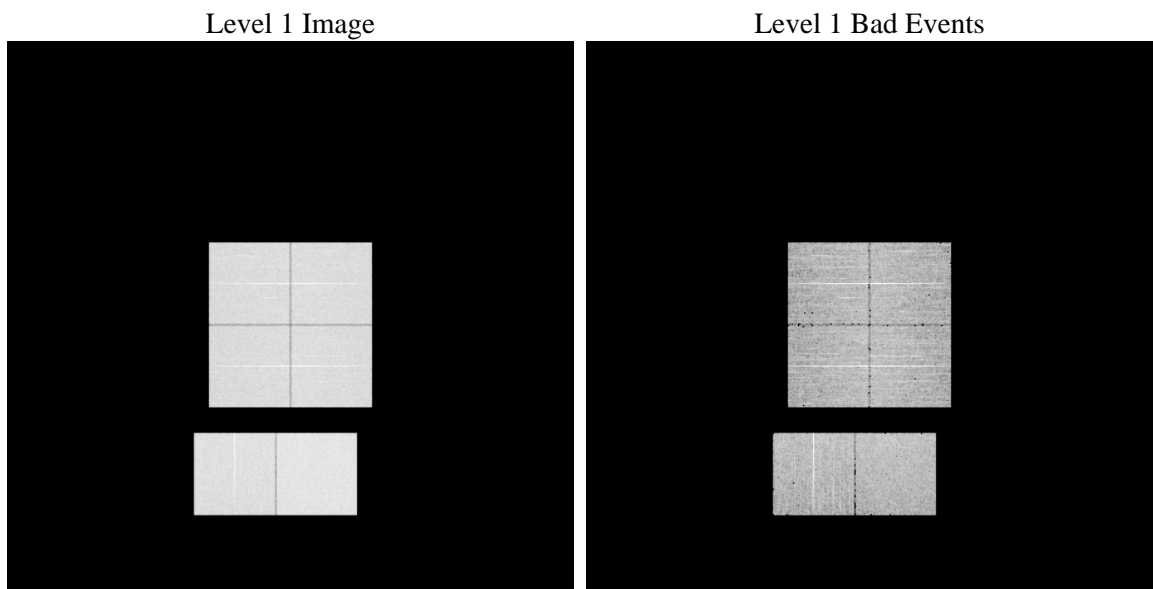
1 Front

seq_num	 	Sequence number
obs_id	60001	Observation id
title	ACIS-012367 diagnostics	Proposal title
observer	CHANDRA engineering request/realtime commanding	Principal investig
object	 	Source name
dtcycle	0	
cycle	P	events from which exps? Prim/Second/Both
ra_targ	0.0	Observer's specified target RA [deg]
dec_targ	0.0	Observer's specified target Dec [deg]
ra_nom	0.031525617236383	Nominal RA [deg]
dec_nom	-25.00177066256	Nominal Dec [deg]
roll_nom	323.59678309357	Nominal Roll [deg]
revision	3	Processing version of data
ontime	7798.3999709487	Sum of GTIs [s]
livetime	7699.6519348838	Livetime [s]
ontime0	6168.1851171255	Sum of GTIs [s]
ontime1	6314.0291507542	Sum of GTIs [s]
ontime2	5911.1936309338	Sum of GTIs [s]
ontime3	6184.3906361163	Sum of GTIs [s]
ontime6	6670.5382181108	Sum of GTIs [s]
ontime7	7798.3999709487	Sum of GTIs [s]
l2events	1064453	Number of level 2 events

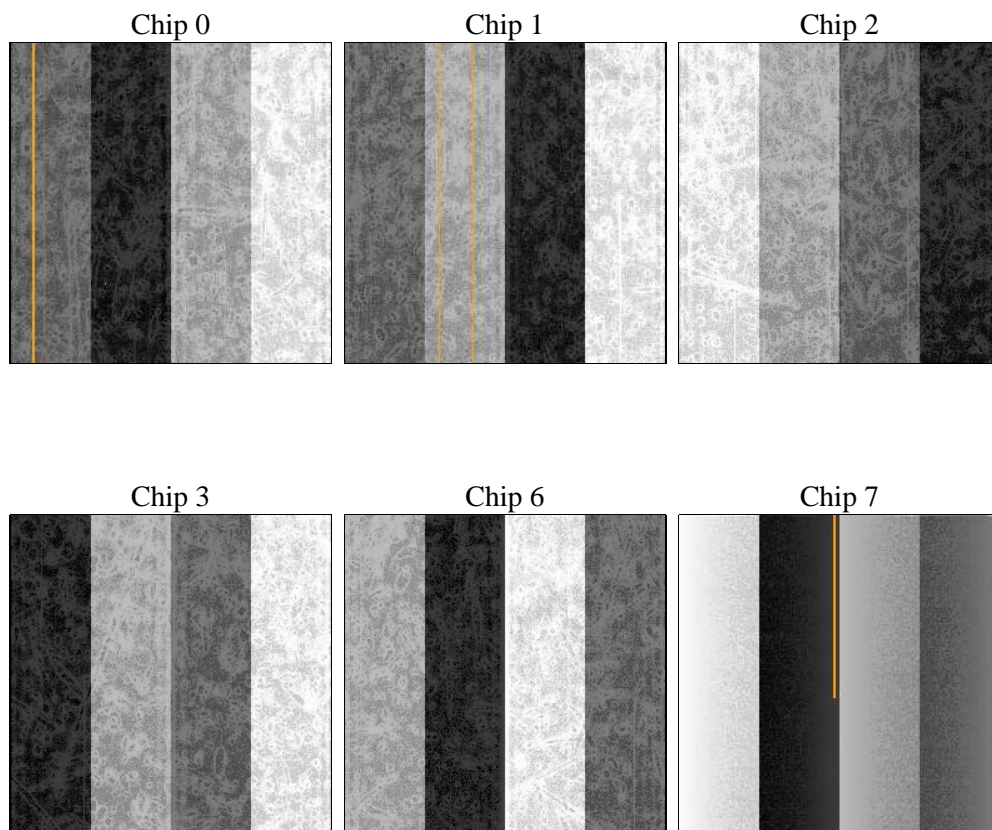
2 OBI

2.1 OBI

2.1.1 Images



2.1.2 Bias



2.1.3 Parameters

obi_num	1	Obi number	sched_exp_time	0.0	[s] Scheduled observation exposure time
ascdsver	8.5	Processing system revision	ontime	7798.3999709487	Sum of GTIs [s]
caldsver	4.5.4	 	ontime0	6168.1851171255	Sum of GTIs [s]
date	2012-12-10T11:19:11	Date and time of file creation	ontime1	6314.0291507542	Sum of GTIs [s]
revision	3	Processing version of data	ontime2	5911.1936309338	Sum of GTIs [s]
			ontime3	6184.3906361163	Sum of GTIs [s]
			ontime6	6670.5382181108	Sum of GTIs [s]
			ontime7	7798.3999709487	Sum of GTIs [s]
			l1events	1413318	Number of level 1 events

2.1.4 Events

	ccd 0	ccd 1	ccd 2	ccd 3	ccd 6	ccd 7		ccd 0	ccd 1	ccd 2	ccd 3	ccd 6	ccd 7
level 1 events	217385	222136	213457	222435	245385	292520	grade 0 events	93612	95492	92688	96203	104532	57805
rejected events	47560	47553	48033	50304	52083	50655		43%	42%	43%	43%	42%	19%
rejected %	21%	21%	22%	22%	21%	17%	grade 1 events	623	563	620	605	552	199
								0%	0%	0%	0%	0%	0%
							grade 2 events	29415	31162	27820	29570	33566	53246
								13%	14%	13%	13%	13%	18%
							grade 3 events	11085	11113	10665	11337	12224	24275
								5%	5%	4%	5%	4%	8%
							grade 4 events	10911	11210	10890	11305	12097	24079
								5%	5%	5%	5%	4%	8%
							grade 5 events	2900	2984	2627	3073	3407	9060
								1%	1%	1%	1%	1%	3%
							grade 6 events	24899	25701	23361	23807	30984	82568
								11%	11%	10%	10%	12%	28%
							grade 7 events	43940	43911	44786	46535	48023	41288
								20%	19%	20%	20%	19%	14%

2.2 Compared Parameters

Parameter	Planned	Actual	Parameter	Planned	Actual
Instrument	ACIS	ACIS	Obspar format version number	7	7
Detector	ACIS-012367	ACIS-012367	Obspar file type	PREDICTED	ACTUAL
Grating	NONE	NONE	Obspar update status	NONE	UPDATED
Data mode	FAINT	FAINT	On-chip summing requested	N	N
Observation mode	SECONDARY	SECONDARY	Subarray requested	NONE	NONE
[deg] Pointing RA	0	0.03152561723638314	Alternating exposures requested	N	N
[deg] Pointing Dec	0	-25.0017706625602	[s] Primary exposure time	3.2	3.2
[deg] Pointing Roll	0.0	323.5967830935726			
[mm] SIM focus pos	-0.782348	-0.6828225247311905			
[mm] SIM defocus	0	0.8505141146731063			
[mm] SIM translation stage pos	-233.592463	250.4635187648994			
[mm] SIM translation stage offset	0	-0.007540371344731511			
[s] Observation start time (MET)	214514523.099067	214514522.07406			
Observation start date	2004-10-18T19:22:03	2004-10-18T19:22:02			
[s] Observation end time (MET)	214535488.450005	214535487.42499			
Observation end date	2004-10-19T01:11:28	2004-10-19T01:11:27			
Read mode	TIMED	TIMED			

2.3 Star Slots

2.4 FID Slots

A Summary

A.1 Status

V&V Scientist	Beth Sundheim
V&V Date (YYYY-MM-DD)	2013.01.03
V&V Edition	1
V&V Disposition and Status	OK
V&V Charge Time	7.7983999709487

A.2 Comments