

# V&V Reference Report

## L2 ASCDS Version : 7.6.7.1

Observation 60001 - L2 Version 001  
Chandra X-Ray Center

L2 Processing Date : Apr 15 2006

## Contents

<b>1</b>	<b>Front</b>	<b>2</b>
<b>2</b>	<b>OBI</b>	<b>3</b>
2.1	OBI . . . . .	3
2.1.1	Images . . . . .	3
2.1.2	Bias . . . . .	3
2.1.3	Parameters . . . . .	4
2.1.4	Events . . . . .	4
2.2	Compared Parameters . . . . .	5
2.3	Aspect . . . . .	6
2.4	Star Slots . . . . .	8
2.5	FID Slots . . . . .	8
<b>A</b>	<b>Summary</b>	<b>9</b>
A.1	Status . . . . .	9
A.2	Comments . . . . .	9

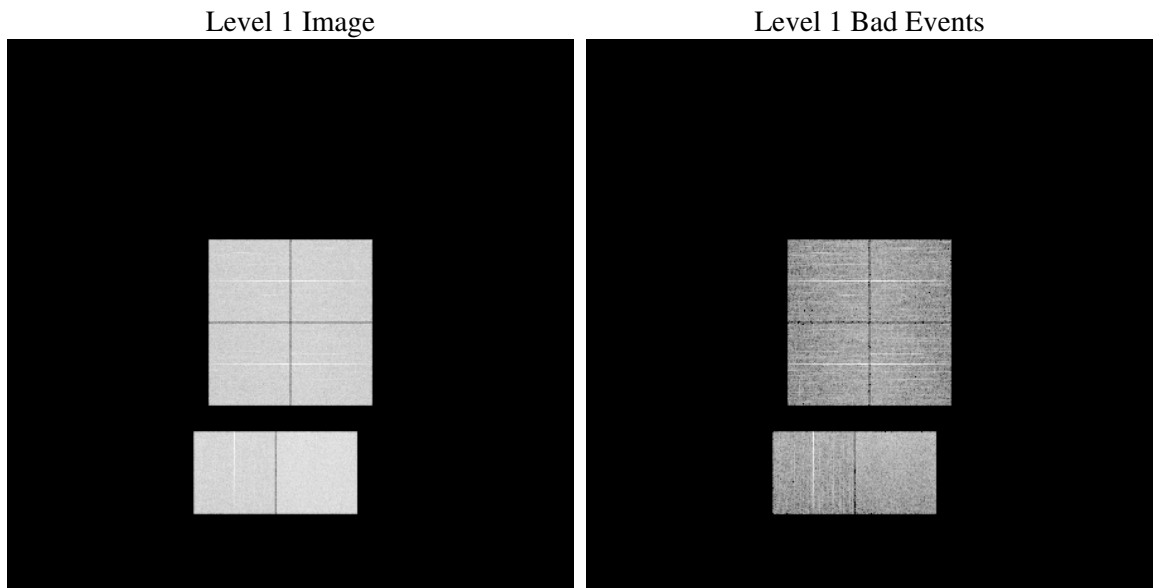
# 1 Front

seq_num	&#160
obs_id	60001
title	ACIS-012367 diagnostics
observer	CHANDRA engineering request/realtime commanding
object	&#160
dtcycle	0
cycle	P
ra_targ	0.0
dec_targ	0.0
ra_nom	0.031500962424409
dec_nom	-25.001754150199
roll_nom	323.59677266581
revision	2
ontime	7798.3999709487
livetime	7699.6519348838
ontime0	6168.1851171255
ontime1	6314.0291507542
ontime2	5909.5936309397
ontime3	6184.3906361163
ontime6	6670.5382181108
ontime7	7798.3999709487
l2events	1055299

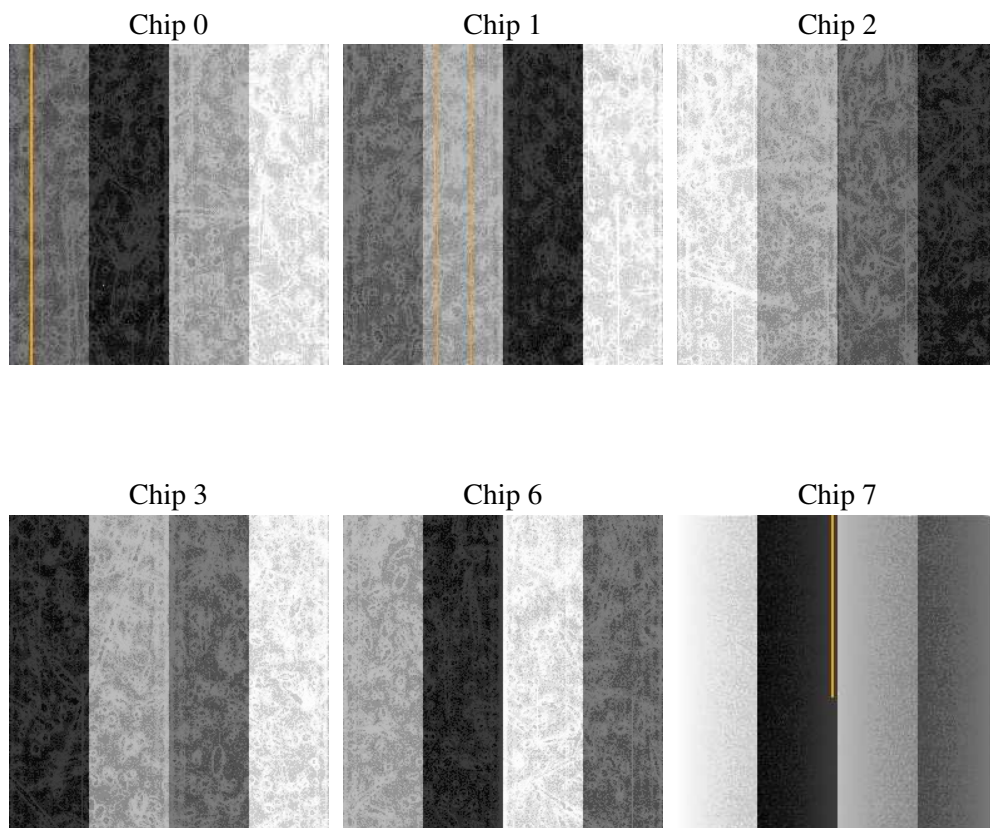
## 2 OBI

### 2.1 OBI

#### 2.1.1 Images



#### 2.1.2 Bias



### 2.1.3 Parameters

obi_num	1
ascdsver	7.6.7.1
caldsver	3.2.1
date	2006-04-15T18:58:11
revision	2

sched_exp_time	0.0
ontime	7801.11290887
ontime0	6170.8980550468
ontime1	6316.7420886755
ontime2	5911.6192221344
ontime3	6187.1035740376
ontime6	6673.2511560321
ontime7	7801.11290887
l1events	1413318

### 2.1.4 Events

	ccd 0	ccd 1	ccd 2	ccd 3	ccd 6	ccd 7
level 1 events	217385	222136	213457	222435	245385	292520
rejected events	47558	47551	48120	50326	52080	59880
rejected %	21%	21%	22%	22%	21%	20%

	ccd 0	ccd 1	ccd 2	ccd 3	ccd 6	ccd 7
grade 0 events	93592	95472	92675	96178	104483	39670
	43%	42%	43%	43%	42%	13%
grade 1 events	619	562	620	603	551	132
	0%	0%	0%	0%	0%	0%
grade 2 events	29435	31182	27833	29595	33615	69984
	13%	14%	13%	13%	13%	23%
grade 3 events	11079	11105	10658	11320	12214	16867
	5%	4%	4%	5%	4%	5%
grade 4 events	10902	11201	10881	11294	12092	16696
	5%	5%	5%	5%	4%	5%
grade 5 events	2899	2983	2619	3074	3405	7142
	1%	1%	1%	1%	1%	2%
grade 6 events	24911	25711	23378	23830	30998	89524
	11%	11%	10%	10%	12%	30%
grade 7 events	43948	43920	44793	46541	48027	52505
	20%	19%	20%	20%	19%	17%

## 2.2 Compared Parameters

Parameter	Planned	Actual	Parameter	Planned	Actual
Instrument	ACIS	ACIS	Obspar format version number	6	6
Detector	ACIS-012367	ACIS-012367	Obspar file type	PREDICTED	ACTUAL
Grating	NONE	NONE	Obspar update status	NONE	UPDATED
Data mode	FAINT	FAINT	On-chip summing requested	N	N
Observation mode	SECONDARY	SECONDARY	Subarray requested	NONE	NONE
Pointing RA	0	0.03150096242440874	Alternating exposures requested	N	N
Pointing Dec	0	-25.00175415019861	Primary exposure time	3.2	3.2
Pointing Roll	0.0	323.5967726658075			
SIM focus pos (mm)	-0.782348	-0.6828225247311905			
SIM defocus (mm)	0	0.8505141146731063			
SIM translation stage pos (mm)	-233.592463	250.4635187648994			
SIM translation stage offset (mm)	0	-0.007540371344731511			
Observation start time	214514523.099067	214514522.07406			
Observation start date	2004-10-18T19:22:03	2004-10-18T19:22:02			
Observation end time	214535488.450005	214535487.42499			
Observation end date	2004-10-19T01:11:28	2004-10-19T01:11:27			
Read mode	TIMED	TIMED			

## 2.3 Aspect



## **2.4 Star Slots**

## **2.5 FID Slots**



## A Summary

### A.1 Status

V&V Scientist	Beth Sundheim
V&V Date (YYYY-MM-DD)	2006.04.16
V&V Edition	1
V&V Disposition and Status	OK
V&V Charge Time	7.79839997

### A.2 Comments