

# V&V Reference Report

## L2 ASCDS Version : 8.5.1.1

Observation 59731 - L2 Version 3  
Chandra X-Ray Center

L2 Processing Date : Dec 21 2012

## Contents

<b>1</b>	<b>Front</b>	<b>2</b>
<b>2</b>	<b>OBI</b>	<b>3</b>
2.1	OBI . . . . .	3
2.1.1	Images . . . . .	3
2.1.2	Bias . . . . .	3
2.1.3	Parameters . . . . .	4
2.1.4	Events . . . . .	4
2.2	Compared Parameters . . . . .	5
2.3	Star Slots . . . . .	6
2.4	FID Slots . . . . .	6
<b>A</b>	<b>Summary</b>	<b>7</b>
A.1	Status . . . . .	7
A.2	Comments . . . . .	7

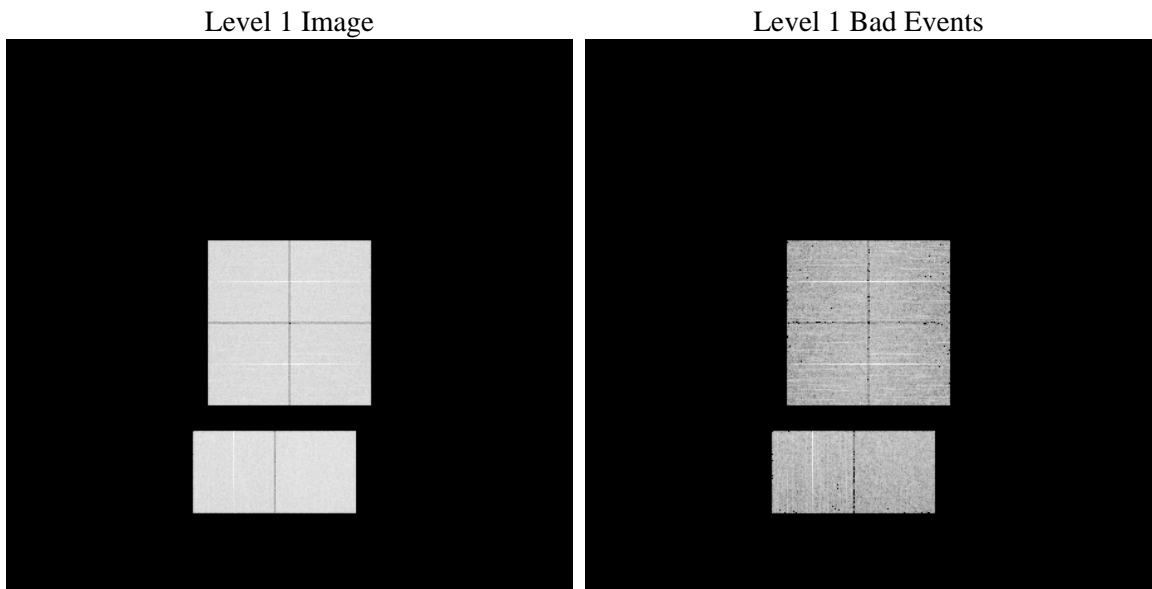
# 1 Front

seq_num	&#160	Sequence number
obs_id	59731	Observation id
title	ACIS-012367 diagnostics	Proposal title
observer	CHANDRA engineering request/realtime commanding	Principal investig
object	&#160	Source name
dtcycle	0	&#160
cycle	P	events from which exps? Prim/Second/Both
ra_targ	0.0	Observer's specified target RA [deg]
dec_targ	0.0	Observer's specified target Dec [deg]
ra_nom	312.97782258366	Nominal RA [deg]
dec_nom	1.0238881543559	Nominal Dec [deg]
roll_nom	89.475770092982	Nominal Roll [deg]
revision	3	Processing version of data
ontime	6780.7999747396	Sum of GTIs [s]
livetime	6694.9374025518	Livetime [s]
ontime0	6161.7751174569	Sum of GTIs [s]
ontime1	6234.4174342155	Sum of GTIs [s]
ontime2	5983.5215513408	Sum of GTIs [s]
ontime3	5795.5431047678	Sum of GTIs [s]
ontime6	6528.0043819249	Sum of GTIs [s]
ontime7	6780.7999747396	Sum of GTIs [s]
l2events	917450	Number of level 2 events

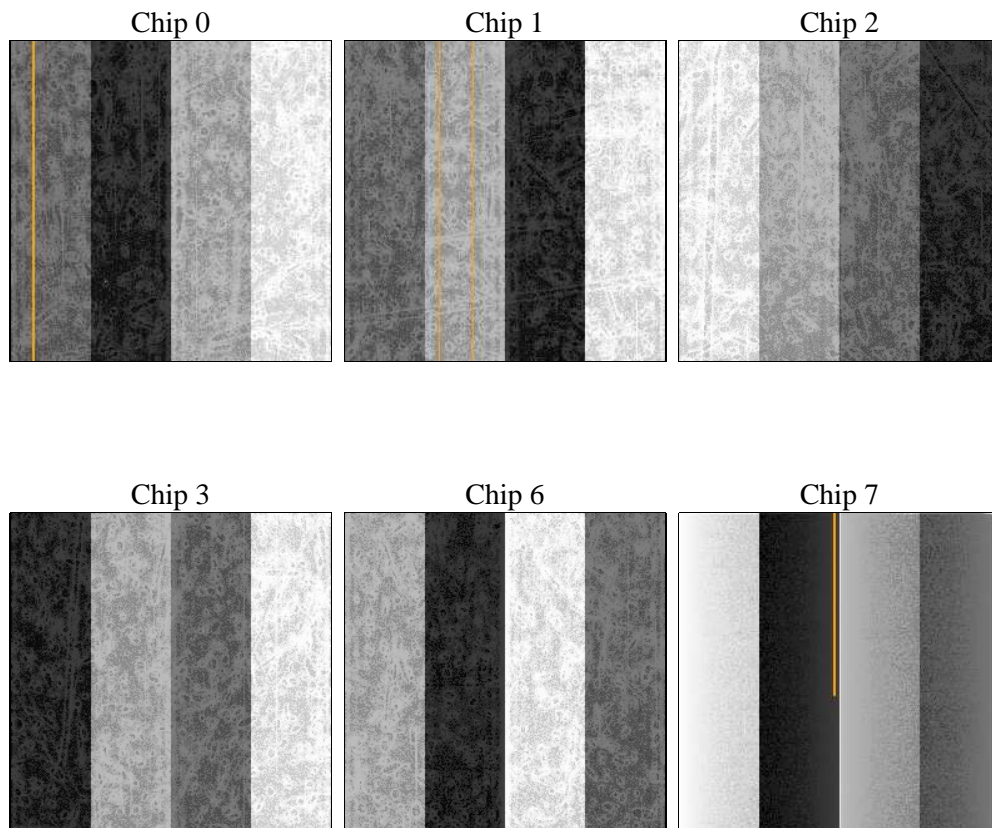
## 2 OBI

### 2.1 OBI

#### 2.1.1 Images



#### 2.1.2 Bias



### 2.1.3 Parameters

obi_num	0	Obi number	sched_exp_time	0.0	[s] Scheduled observation exposure time
ascdsver	8.5.1.1	Processing system revision	ontime	6780.7999747396	Sum of GTIs [s]
caldsver	4.5.5	&#160	ontime0	6161.7751174569	Sum of GTIs [s]
date	2012-12-21T05:52:25	Date and time of file creation	ontime1	6234.4174342155	Sum of GTIs [s]
revision	3	Processing version of data	ontime2	5983.5215513408	Sum of GTIs [s]
			ontime3	5795.5431047678	Sum of GTIs [s]
			ontime6	6528.0043819249	Sum of GTIs [s]
			ontime7	6780.7999747396	Sum of GTIs [s]
			l1events	1226358	Number of level 1 events

### 2.1.4 Events

	ccd 0	ccd 1	ccd 2	ccd 3	ccd 6	ccd 7		ccd 0	ccd 1	ccd 2	ccd 3	ccd 6	ccd 7
level 1 events	195139	198859	194610	190342	217898	229510	grade 0 events	84674	85380	84914	81896	92798	43866
rejected events	41540	42867	43514	44695	47586	41599		43%	42%	43%	43%	42%	19%
rejected %	21%	21%	22%	23%	21%	18%	grade 1 events	482	465	498	495	467	162
								0%	0%	0%	0%	0%	0%
							grade 2 events	26888	27876	25375	24783	29271	41337
								13%	14%	13%	13%	13%	18%
							grade 3 events	9824	9904	9930	9570	10629	18700
								5%	4%	5%	5%	4%	8%
							grade 4 events	9857	9845	9872	9423	10632	18266
								5%	4%	5%	4%	4%	7%
							grade 5 events	2627	2778	2528	2729	2994	7224
								1%	1%	1%	1%	1%	3%
							grade 6 events	22356	22987	21005	19975	26982	65742
								11%	11%	10%	10%	12%	28%
							grade 7 events	38431	39624	40488	41471	44125	34213
								19%	19%	20%	21%	20%	14%

## 2.2 Compared Parameters

Parameter	Planned	Actual
Instrument	ACIS	ACIS
Detector	ACIS-012367	ACIS-012367
Grating	NONE	NONE
Data mode	FAINT	FAINT
Observation mode	SECONDARY	SECONDARY
[deg] Pointing RA	0	312.9778225836565
[deg] Pointing Dec	0	1.023888154355943
[deg] Pointing Roll	0.0	89.47577009298185
[mm] SIM focus pos	-0.782348	-0.7809083437167272
[mm] SIM defocus	0	0.7524282956875696
[mm] SIM translation stage pos	-233.592463	250.466033080201
[mm] SIM translation stage offset	0	-0.01005468664627074
[s] Observation start time (MET)	227767127.946398	227767126.9214
Observation start date	2005-03-21T04:38:48	2005-03-21T04:38:46
[s] Observation end time (MET)	227782004.797073	227782003.77208
Observation end date	2005-03-21T08:46:45	2005-03-21T08:46:43
Read mode	TIMED	TIMED

Parameter	Planned	Actual
Obspar format version number	7	7
Obspar file type	PREDICTED	ACTUAL
Obspar update status	NONE	UPDATED
On-chip summing requested	N	N
Subarray requested	NONE	NONE
Alternating exposures requested	N	N
[s] Primary exposure time	3.2	3.2

## 2.3 Star Slots

## 2.4 FID Slots

## A Summary

### A.1 Status

V&V Scientist	Jen Lauer
V&V Date (YYYY-MM-DD)	2013.01.04
V&V Edition	1
V&V Disposition and Status	OK
V&V Charge Time	6.7807999747396

### A.2 Comments