

V&V Reference Report

L2 ASCDS Version : 8.5.1.1

Observation 59461 - L2 Version 3
Chandra X-Ray Center

L2 Processing Date : Dec 28 2012

Contents

1	Front	2
2	OBI	3
2.1	OBI	3
2.1.1	Images	3
2.1.2	Bias	3
2.1.3	Parameters	4
2.1.4	Events	4
2.2	Compared Parameters	5
2.3	Star Slots	6
2.4	FID Slots	6
A	Summary	7
A.1	Status	7
A.2	Comments	7

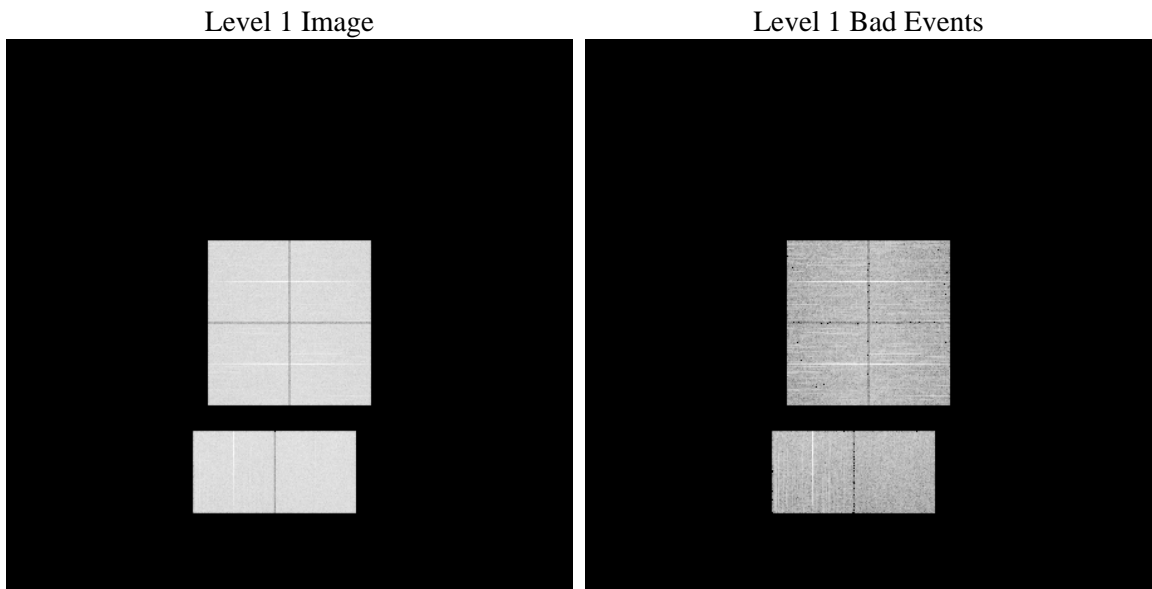
1 Front

seq_num	 	Sequence number
obs_id	59461	Observation id
title	ACIS-012367 diagnostics	Proposal title
observer	CHANDRA engineering request/realtime commanding	Principal investig
object	 	Source name
dtcycle	0	
cycle	P	events from which exps? Prim/Second/Both
ra_targ	0.0	Observer's specified target RA [deg]
dec_targ	0.0	Observer's specified target Dec [deg]
ra_nom	15.778560466329	Nominal RA [deg]
dec_nom	4.518367449488	Nominal Dec [deg]
roll_nom	109.32506627419	Nominal Roll [deg]
revision	3	Processing version of data
ontime	7801.5999709368	Sum of GTIs [s]
livetime	7702.8114145452	Livetime [s]
ontime0	7733.5393147767	Sum of GTIs [s]
ontime1	7801.5999709368	Sum of GTIs [s]
ontime2	7662.2376281023	Sum of GTIs [s]
ontime3	7788.6360297501	Sum of GTIs [s]
ontime6	7801.5999709368	Sum of GTIs [s]
ontime7	7801.5999709368	Sum of GTIs [s]
l2events	1023465	Number of level 2 events

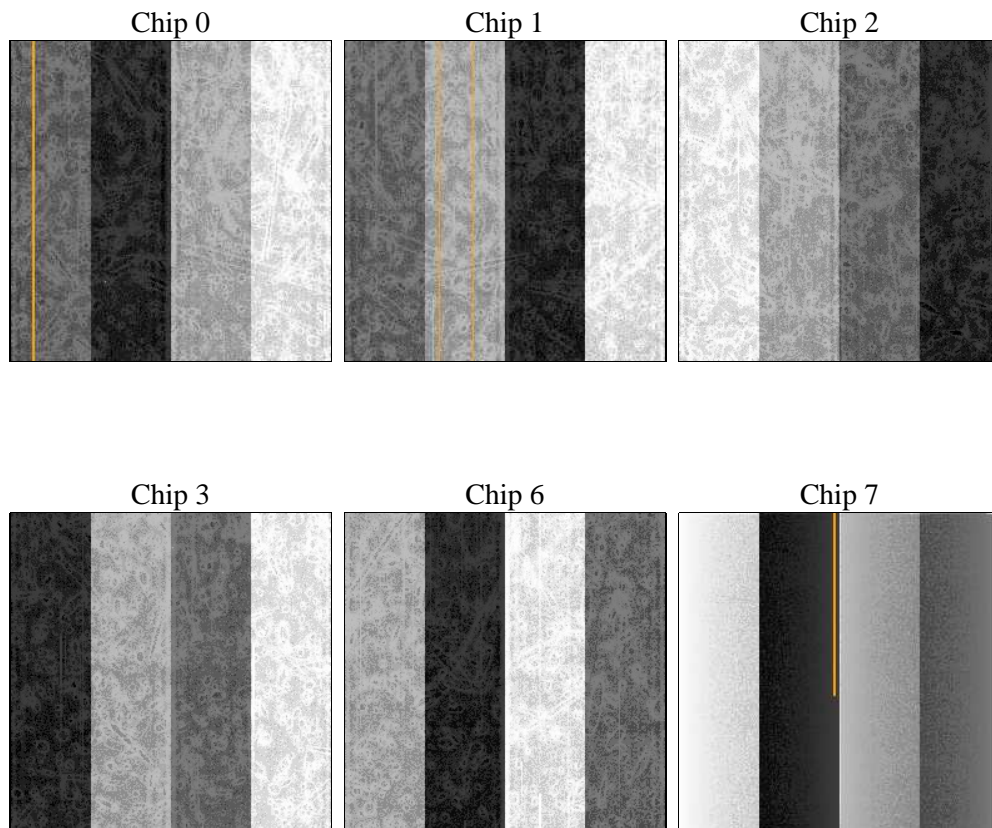
2 OBI

2.1 OBI

2.1.1 Images



2.1.2 Bias



2.1.3 Parameters

obi_num	0	Obi number	sched_exp_time	0.0	[s] Scheduled observation exposure time
ascdsver	8.5.1.1	Processing system revision	ontime	7801.5999709368	Sum of GTIs [s]
caldsver	4.5.5	 	ontime0	7733.5393147767	Sum of GTIs [s]
date	2012-12-28T22:52:35	Date and time of file creation	ontime1	7801.5999709368	Sum of GTIs [s]
revision	3	Processing version of data	ontime2	7662.2376281023	Sum of GTIs [s]
			ontime3	7788.6360297501	Sum of GTIs [s]
			ontime6	7801.5999709368	Sum of GTIs [s]
			ontime7	7801.5999709368	Sum of GTIs [s]
			l1events	1398177	Number of level 1 events

2.1.4 Events

	ccd 0	ccd 1	ccd 2	ccd 3	ccd 6	ccd 7		ccd 0	ccd 1	ccd 2	ccd 3	ccd 6	ccd 7
level 1 events	225494	225612	228132	233149	240553	245237	grade 0 events	94443	94868	96056	98962	99327	47037
rejected events	53280	51768	55734	56377	57317	47112		41%	42%	42%	42%	41%	19%
rejected %	23%	22%	24%	24%	23%	19%	grade 1 events	584	471	631	596	470	146
								0%	0%	0%	0%	0%	0%
							grade 2 events	30238	30975	29524	30188	31812	43657
								13%	13%	12%	12%	13%	17%
							grade 3 events	11234	11190	11359	11391	11361	19671
								4%	4%	4%	4%	4%	8%
							grade 4 events	11047	11105	11295	11750	11395	19687
								4%	4%	4%	5%	4%	8%
							grade 5 events	3086	3339	3033	3391	3627	8372
								1%	1%	1%	1%	1%	3%
							grade 6 events	25312	25771	24231	24563	29425	68146
								11%	11%	10%	10%	12%	27%
							grade 7 events	49550	47893	52003	52308	53136	38521
								21%	21%	22%	22%	22%	15%

2.2 Compared Parameters

Parameter	Planned	Actual
Instrument	ACIS	ACIS
Detector	ACIS-012367	ACIS-012367
Grating	NONE	NONE
Data mode	FAINT	FAINT
Observation mode	SECONDARY	SECONDARY
[deg] Pointing RA	0	15.77856046632881
[deg] Pointing Dec	0	4.518367449488006
[deg] Pointing Roll	0.0	109.3250662741874
[mm] SIM focus pos	-0.782348	-0.6828225247311905
[mm] SIM defocus	0	0.8505141146731063
[mm] SIM translation stage pos	-233.592463	250.466033080201
[mm] SIM translation stage offset	0	-0.01005468664627074
[s] Observation start time (MET)	242392382.114035	242392381.08906
Observation start date	2005-09-06T11:13:02	2005-09-06T11:13:01
[s] Observation end time (MET)	242406506.614684	242406505.58971
Observation end date	2005-09-06T15:08:27	2005-09-06T15:08:25
Read mode	TIMED	TIMED

Parameter	Planned	Actual
Obspar format version number	7	7
Obspar file type	PREDICTED	ACTUAL
Obspar update status	NONE	UPDATED
On-chip summing requested	N	N
Subarray requested	NONE	NONE
Alternating exposures requested	N	N
[s] Primary exposure time	3.2	3.2

2.3 Star Slots

2.4 FID Slots

A Summary

A.1 Status

V&V Scientist	Beth Sundheim
V&V Date (YYYY-MM-DD)	2013.01.25
V&V Edition	1
V&V Disposition and Status	OK
V&V Charge Time	7.8015999709368

A.2 Comments