

# V&V Reference Report

## L2 ASCDS Version : 8.4.3

Observation 59261 - L2 Version 2  
Chandra X-Ray Center

L2 Processing Date : Mar 18 2012

## Contents

<b>1</b>	<b>Front</b>	<b>2</b>
<b>2</b>	<b>OBI</b>	<b>3</b>
2.1	OBI . . . . .	3
2.1.1	Images . . . . .	3
2.1.2	Bias . . . . .	3
2.1.3	Parameters . . . . .	4
2.1.4	Events . . . . .	4
2.2	Compared Parameters . . . . .	5
2.3	Star Slots . . . . .	6
2.4	FID Slots . . . . .	6
<b>A</b>	<b>Summary</b>	<b>7</b>
A.1	Status . . . . .	7
A.2	Comments . . . . .	7

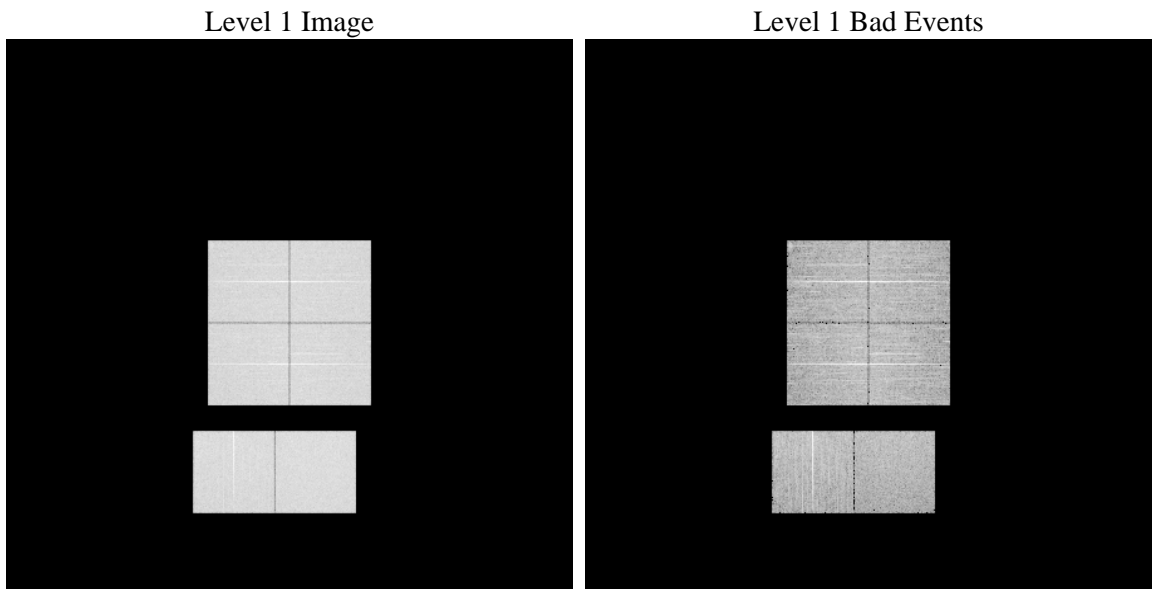
# 1 Front

seq_num	&#160	Sequence number
obs_id	59261	Observation id
title	ACIS-012367 diagnostics	Proposal title
observer	CHANDRA engineering request/realtime commanding	Principal investig
object	&#160	Source name
dtcycle	0	&#160
cycle	P	events from which exps? Prim/Second/Both
ra_targ	0.0	Observer's specified target RA [deg]
dec_targ	0.0	Observer's specified target Dec [deg]
ra_nom	100.97216283608	Nominal RA [deg]
dec_nom	35.517520186616	Nominal Dec [deg]
roll_nom	109.42924807225	Nominal Roll [deg]
revision	2	Processing version of data
ontime	7800.6223305464	Sum of GTIs [s]
livetime	7701.8461536261	Livetime [s]
ontime0	7713.0747025907	Sum of GTIs [s]
ontime1	7758.4074864984	Sum of GTIs [s]
ontime2	7615.7631433904	Sum of GTIs [s]
ontime3	7710.3656827211	Sum of GTIs [s]
ontime6	7800.458170563	Sum of GTIs [s]
ontime7	7800.6223305464	Sum of GTIs [s]
l2events	996931	Number of level 2 events

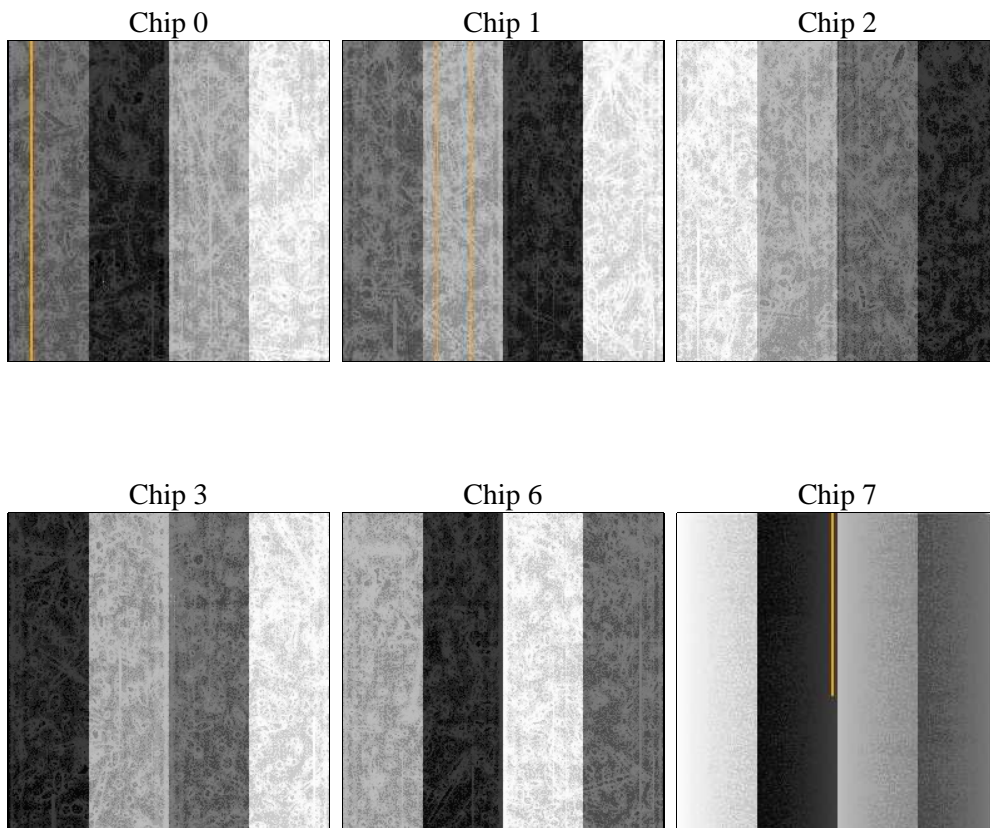
## 2 OBI

### 2.1 OBI

#### 2.1.1 Images



#### 2.1.2 Bias



### 2.1.3 Parameters

obi_num	0	Obi number	sched_exp_time	0.0	[s] Scheduled observation exposure time
ascdsver	8.4.3	Processing system revision	ontime	7800.6223305464	Sum of GTIs [s]
caldsver	4.4.8	&#160	ontime0	7713.0747025907	Sum of GTIs [s]
date	2012-03-18T11:17:47	Date and time of file creation	ontime1	7758.4074864984	Sum of GTIs [s]
revision	2	Processing version of data	ontime2	7615.7631433904	Sum of GTIs [s]
			ontime3	7710.3656827211	Sum of GTIs [s]
			ontime6	7800.458170563	Sum of GTIs [s]
			ontime7	7800.6223305464	Sum of GTIs [s]
			l1events	1398340	Number of level 1 events

### 2.1.4 Events

	ccd 0	ccd 1	ccd 2	ccd 3	ccd 6	ccd 7		ccd 0	ccd 1	ccd 2	ccd 3	ccd 6	ccd 7
level 1 events	224242	227261	227014	230731	241227	247865	grade 0 events	91407	91298	93102	94526	95885	46190
rejected events	56826	57901	59634	60851	62355	51579		40%	40%	41%	40%	39%	18%
rejected %	25%	25%	26%	26%	25%	20%	grade 1 events	565	507	648	627	512	179
								0%	0%	0%	0%	0%	0%
							grade 2 events	29029	30358	28517	28844	31198	42782
								12%	13%	12%	12%	12%	17%
							grade 3 events	10953	10821	10906	11207	11252	19236
								4%	4%	4%	4%	4%	7%
							grade 4 events	10911	10963	10918	11428	11287	18957
								4%	4%	4%	4%	4%	7%
							grade 5 events	3264	3549	3298	3715	3842	9055
								1%	1%	1%	1%	1%	3%
							grade 6 events	25116	25920	23937	23875	29250	69121
								11%	11%	10%	10%	12%	27%
							grade 7 events	52997	53845	55688	56509	58001	42345
								23%	23%	24%	24%	24%	17%

## 2.2 Compared Parameters

Parameter	Planned	Actual	Parameter	Planned	Actual
Instrument	ACIS	ACIS	Obspar format version number	7	7
Detector	ACIS-012367	ACIS-012367	Obspar file type	PREDICTED	ACTUAL
Grating	NONE	NONE	Obspar update status	NONE	UPDATED
Data mode	FAINT	FAINT	On-chip summing requested	N	N
Observation mode	SECONDARY	SECONDARY	Subarray requested	NONE	NONE
[deg] Pointing RA	0	100.9721628360783	Alternating exposures requested	N	N
[deg] Pointing Dec	0	35.5175201866156	[s] Primary exposure time	3.2	3.2
[deg] Pointing Roll	0.0	109.4292480722543			
[mm] SIM focus pos	-0.782348	-0.6828225247311905			
[mm] SIM defocus	0	0.8505141146731063			
[mm] SIM translation stage pos	-233.592463	250.466033080201			
[mm] SIM translation stage offset	0	-0.01005468664627074			
[s] Observation start time (MET)	250157546.721871	250157545.69686			
Observation start date	2005-12-05T08:12:27	2005-12-05T08:12:25			
[s] Observation end time (MET)	250167665.522339	250167664.49733			
Observation end date	2005-12-05T11:01:06	2005-12-05T11:01:04			
Read mode	TIMED	TIMED			

## **2.3 Star Slots**

## **2.4 FID Slots**

## A Summary

### A.1 Status

V&V Scientist	Jen Lauer
V&V Date (YYYY-MM-DD)	2012.03.19
V&V Edition	1
V&V Disposition and Status	OK
V&V Charge Time	7.8006223305464

### A.2 Comments