

# V&V Reference Report

## L2 ASCDS Version : 8.4.3

Observation 59251 - L2 Version 2  
Chandra X-Ray Center

L2 Processing Date : Mar 18 2012

## Contents

<b>1</b>	<b>Front</b>	<b>2</b>
<b>2</b>	<b>OBI</b>	<b>3</b>
2.1	OBI . . . . .	3
2.1.1	Images . . . . .	3
2.1.2	Bias . . . . .	3
2.1.3	Parameters . . . . .	4
2.1.4	Events . . . . .	4
2.2	Compared Parameters . . . . .	5
2.3	Star Slots . . . . .	6
2.4	FID Slots . . . . .	6
<b>A</b>	<b>Summary</b>	<b>7</b>
A.1	Status . . . . .	7
A.2	Comments . . . . .	7

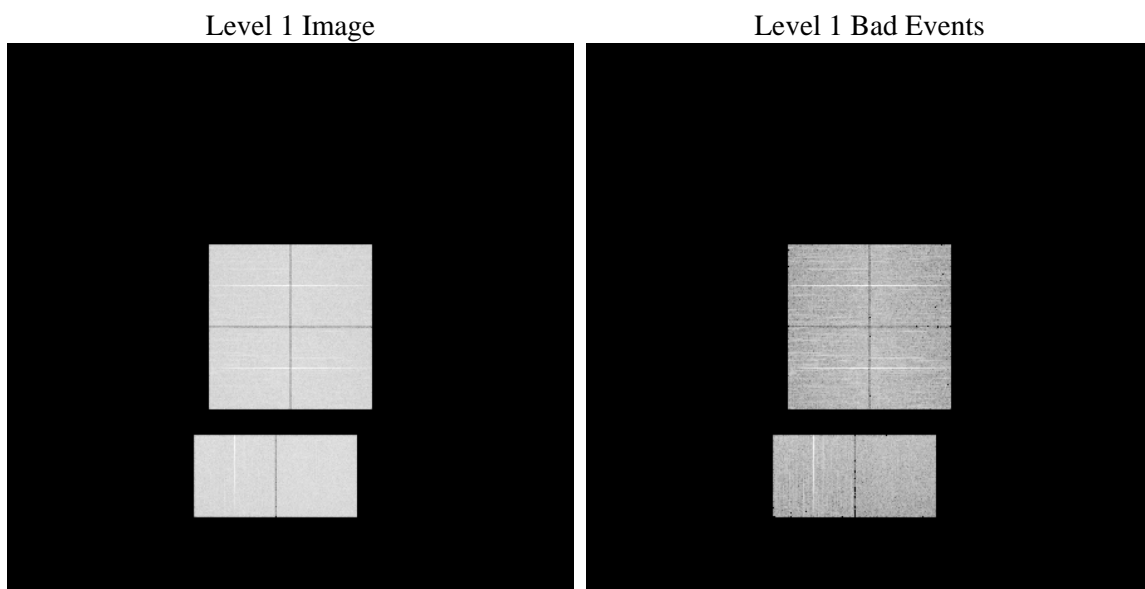
# 1 Front

seq_num	&#160	Sequence number
obs_id	59251	Observation id
title	ACIS-012367 diagnostics	Proposal title
observer	CHANDRA engineering request/realtime commanding	Principal investig
object	&#160	Source name
dtcycle	0	&#160
cycle	P	events from which exps? Prim/Second/Both
ra_targ	0.0	Observer's specified target RA [deg]
dec_targ	0.0	Observer's specified target Dec [deg]
ra_nom	97.505009360749	Nominal RA [deg]
dec_nom	4.0281850178442	Nominal Dec [deg]
roll_nom	47.038443893602	Nominal Roll [deg]
revision	2	Processing version of data
ontime	8203.3301740289	Sum of GTIs [s]
livetime	8099.4546679129	Livetime [s]
ontime0	8203.2891340256	Sum of GTIs [s]
ontime1	8203.2480940223	Sum of GTIs [s]
ontime2	8203.207054019	Sum of GTIs [s]
ontime3	8203.3712140322	Sum of GTIs [s]
ontime6	8199.9250237346	Sum of GTIs [s]
ontime7	8203.3301740289	Sum of GTIs [s]
l2events	1011360	Number of level 2 events

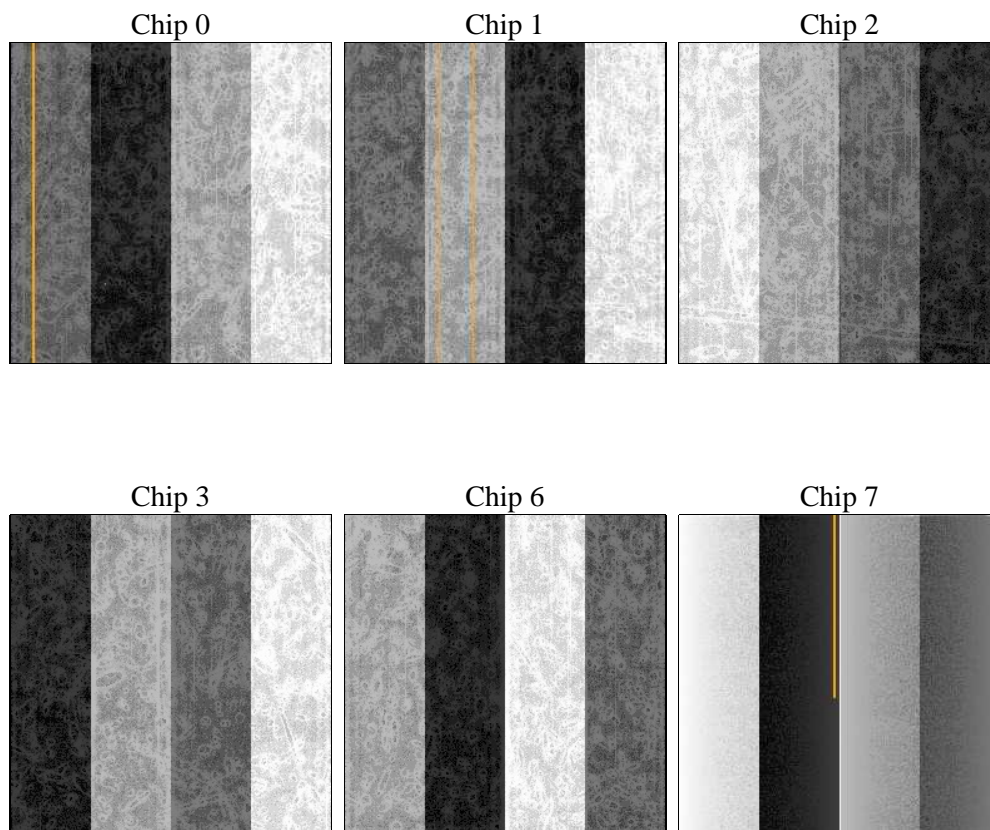
## 2 OBI

### 2.1 OBI

#### 2.1.1 Images



#### 2.1.2 Bias



### 2.1.3 Parameters

obi_num	0	Obi number	sched_exp_time	0.0	[s] Scheduled observation exposure time
ascdsver	8.4.3.1	Processing system revision	ontime	8203.3301740289	Sum of GTIs [s]
caldsver	4.4.8	&#160	ontime0	8203.2891340256	Sum of GTIs [s]
date	2012-03-18T12:21:59	Date and time of file creation	ontime1	8203.2480940223	Sum of GTIs [s]
revision	2	Processing version of data	ontime2	8203.207054019	Sum of GTIs [s]
			ontime3	8203.3712140322	Sum of GTIs [s]
			ontime6	8199.9250237346	Sum of GTIs [s]
			ontime7	8203.3301740289	Sum of GTIs [s]
			l1events	1446164	Number of level 1 events

### 2.1.4 Events

	ccd 0	ccd 1	ccd 2	ccd 3	ccd 6	ccd 7		ccd 0	ccd 1	ccd 2	ccd 3	ccd 6	ccd 7
level 1 events	232628	231486	241346	240205	244879	255620	grade 0 events	94226	94294	96726	97159	97568	45635
rejected events	61801	59731	68853	67898	66051	57045		40%	40%	40%	40%	39%	17%
rejected %	26%	25%	28%	28%	26%	22%	grade 1 events	638	478	677	670	598	162
								0%	0%	0%	0%	0%	0%
							grade 2 events	30292	31168	29473	29523	31194	43769
								13%	13%	12%	12%	12%	17%
							grade 3 events	11315	11182	11530	11402	11431	19879
								4%	4%	4%	4%	4%	7%
							grade 4 events	11393	11315	11617	11545	11281	19638
								4%	4%	4%	4%	4%	7%
							grade 5 events	3637	3743	3469	3964	4080	9536
								1%	1%	1%	1%	1%	3%
							grade 6 events	25177	25517	24798	24277	29064	71512
								10%	11%	10%	10%	11%	27%
							grade 7 events	55950	53789	63056	61665	59663	45489
								24%	23%	26%	25%	24%	17%

## 2.2 Compared Parameters

Parameter	Planned	Actual
Instrument	ACIS	ACIS
Detector	ACIS-012367	ACIS-012367
Grating	NONE	NONE
Data mode	FAINT	FAINT
Observation mode	SECONDARY	SECONDARY
[deg] Pointing RA	0	97.50500936074879
[deg] Pointing Dec	0	4.028185017844185
[deg] Pointing Roll	0.0	47.03844389360217
[mm] SIM focus pos	-0.782348	-1.038866356238299
[mm] SIM defocus	0	0.4944702831659975
[mm] SIM translation stage pos	-233.592463	250.466033080201
[mm] SIM translation stage offset	0	-0.01005468664627074
[s] Observation start time (MET)	250427334.934352	250427333.90934
Observation start date	2005-12-08T11:08:55	2005-12-08T11:08:53
[s] Observation end time (MET)	250450157.585409	250450156.56039
Observation end date	2005-12-08T17:29:18	2005-12-08T17:29:16
Read mode	TIMED	TIMED

Parameter	Planned	Actual
Obspar format version number	7	7
Obspar file type	PREDICTED	ACTUAL
Obspar update status	NONE	UPDATED
On-chip summing requested	N	N
Subarray requested	NONE	NONE
Alternating exposures requested	N	N
[s] Primary exposure time	3.2	3.2

## 2.3 Star Slots

## 2.4 FID Slots

## A Summary

### A.1 Status

V&V Scientist	Beth Sundheim
V&V Date (YYYY-MM-DD)	2012.03.21
V&V Edition	1
V&V Disposition and Status	OK
V&V Charge Time	8.2033301740289

### A.2 Comments