

V&V Reference Report

L2 ASCDS Version : 8.4.3

Observation 58991 - L2 Version 2
Chandra X-Ray Center

L2 Processing Date : Mar 30 2012

Contents

1	Front	2
2	OBI	3
2.1	OBI	3
2.1.1	Images	3
2.1.2	Bias	3
2.1.3	Parameters	4
2.1.4	Events	4
2.2	Compared Parameters	5
2.3	Star Slots	6
2.4	FID Slots	6
A	Summary	7
A.1	Status	7
A.2	Comments	7

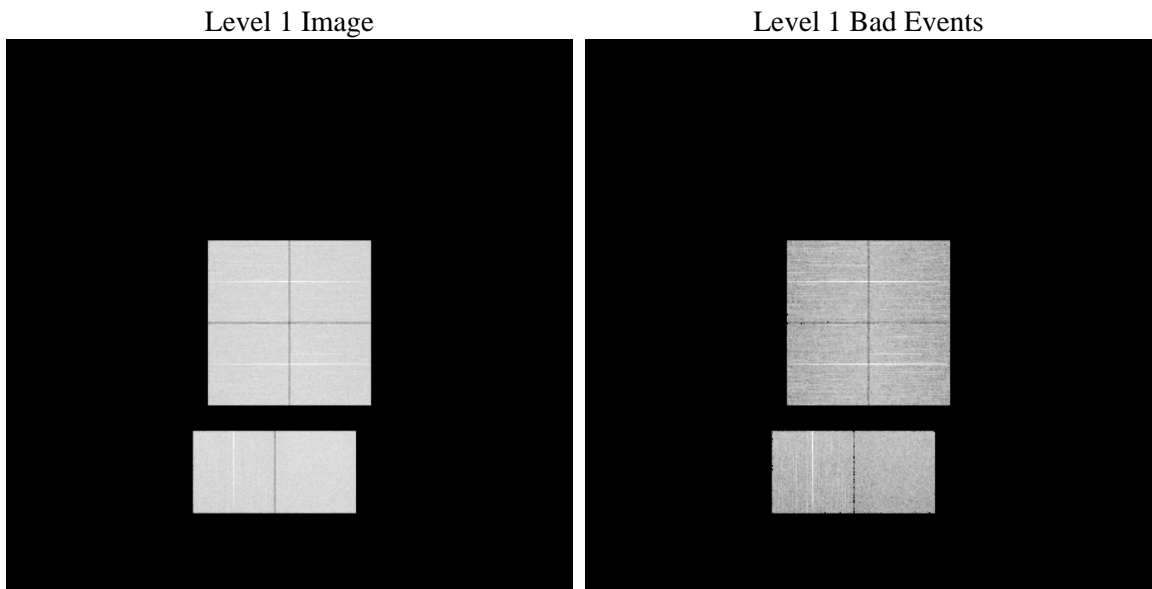
1 Front

seq_num	 	Sequence number
obs_id	58991	Observation id
title	ACIS-012367 diagnostics	Proposal title
observer	CHANDRA engineering request/realtime commanding	Principal investig
object	 	Source name
dtcycle	0	
cycle	P	events from which exps? Prim/Second/Both
ra_targ	0.0	Observer's specified target RA [deg]
dec_targ	0.0	Observer's specified target Dec [deg]
ra_nom	203.03727870755	Nominal RA [deg]
dec_nom	-39.99622376937	Nominal Dec [deg]
roll_nom	329.70103956447	Nominal Roll [deg]
revision	2	Processing version of data
ontime	8277.5382862389	Sum of GTIs [s]
livetime	8172.7231123234	Livetime [s]
ontime0	8277.538266331	Sum of GTIs [s]
ontime1	8277.5114795566	Sum of GTIs [s]
ontime2	8277.4704395533	Sum of GTIs [s]
ontime3	8277.538266331	Sum of GTIs [s]
ontime6	8277.4293995798	Sum of GTIs [s]
ontime7	8277.5382862389	Sum of GTIs [s]
l2events	936034	Number of level 2 events

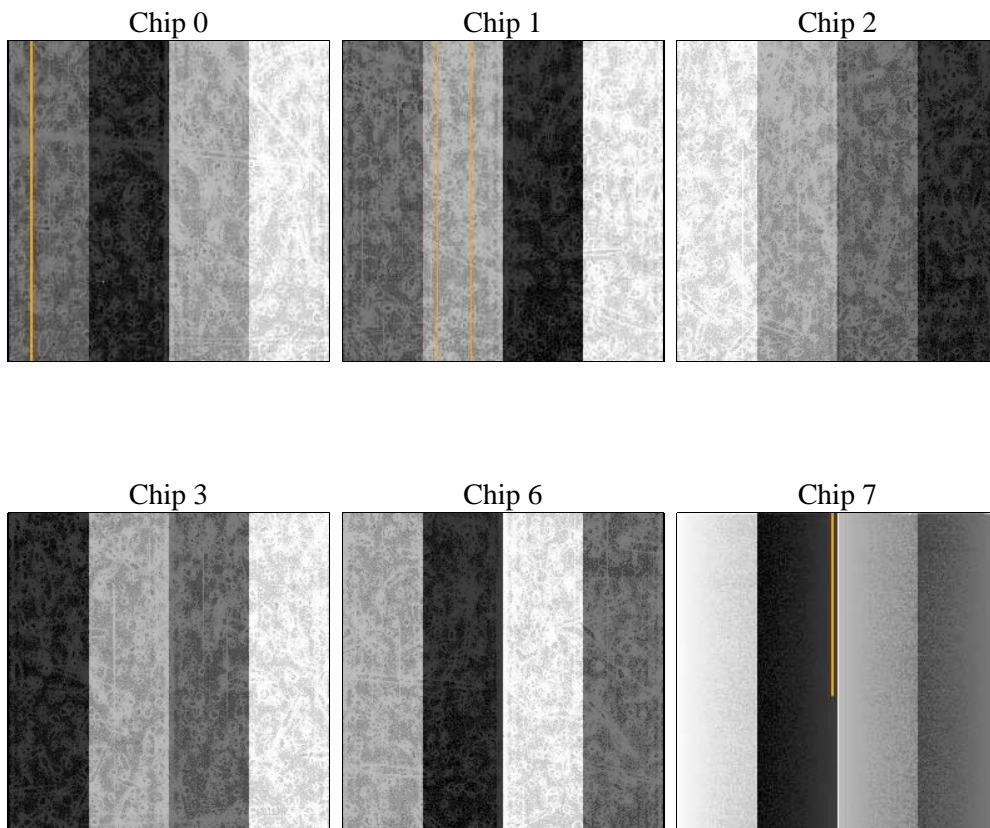
2 OBI

2.1 OBI

2.1.1 Images



2.1.2 Bias



2.1.3 Parameters

obi_num	0	Obi number	sched_exp_time	0.0	[s] Scheduled observation exposure time
ascdsver	8.4.3.1	Processing system revision	ontime	8277.5382862389	Sum of GTIs [s]
caldsver	4.4.8	 	ontime0	8277.538266331	Sum of GTIs [s]
date	2012-03-30T21:30:16	Date and time of file creation	ontime1	8277.5114795566	Sum of GTIs [s]
revision	2	Processing version of data	ontime2	8277.4704395533	Sum of GTIs [s]
			ontime3	8277.538266331	Sum of GTIs [s]
			ontime6	8277.4293995798	Sum of GTIs [s]
			ontime7	8277.5382862389	Sum of GTIs [s]
			l1events	1394700	Number of level 1 events

2.1.4 Events

	ccd 0	ccd 1	ccd 2	ccd 3	ccd 6	ccd 7		ccd 0	ccd 1	ccd 2	ccd 3	ccd 6	ccd 7
level 1 events	227033	222625	227720	232172	235262	249888	grade 0 events	86255	85153	87790	88487	88137	42065
rejected events	69396	65342	69731	73131	70795	60586		37%	38%	38%	38%	37%	16%
rejected %	30%	29%	30%	31%	30%	24%	grade 1 events	606	469	663	633	519	179
								0%	0%	0%	0%	0%	0%
							grade 2 events	27896	28297	26492	26947	28308	41333
								12%	12%	11%	11%	12%	16%
							grade 3 events	10277	10392	10464	10458	10553	18437
								4%	4%	4%	4%	4%	7%
							grade 4 events	10262	9993	10391	10579	10437	18510
								4%	4%	4%	4%	4%	7%
							grade 5 events	3822	4020	3592	4278	4098	10259
								1%	1%	1%	1%	1%	4%
							grade 6 events	22947	23448	22852	22570	27032	68957
								10%	10%	10%	9%	11%	27%
							grade 7 events	64968	60853	65476	68220	66178	50148
								28%	27%	28%	29%	28%	20%

2.2 Compared Parameters

Parameter	Planned	Actual
Instrument	ACIS	ACIS
Detector	ACIS-012367	ACIS-012367
Grating	NONE	NONE
Data mode	FAINT	FAINT
Observation mode	SECONDARY	SECONDARY
[deg] Pointing RA	0	203.0372787075453
[deg] Pointing Dec	0	-39.99622376937018
[deg] Pointing Roll	0.0	329.701039564471
[mm] SIM focus pos	-0.782348	-0.6828225247311905
[mm] SIM defocus	0	0.8505141146731063
[mm] SIM translation stage pos	-233.592463	250.4635187648994
[mm] SIM translation stage offset	0	-0.007540371344731511
[s] Observation start time (MET)	262765297.407412	262765296.3824
Observation start date	2006-04-30T06:21:37	2006-04-30T06:21:36
[s] Observation end time (MET)	262788702.258505	262788701.23349
Observation end date	2006-04-30T12:51:42	2006-04-30T12:51:41
Read mode	TIMED	TIMED

Parameter	Planned	Actual
Obspar format version number	7	7
Obspar file type	PREDICTED	ACTUAL
Obspar update status	NONE	UPDATED
On-chip summing requested	N	N
Subarray requested	NONE	NONE
Alternating exposures requested	N	N
[s] Primary exposure time	3.2	3.2

2.3 Star Slots

2.4 FID Slots

A Summary

A.1 Status

V&V Scientist	Beth Sundheim
V&V Date (YYYY-MM-DD)	2012.04.02
V&V Edition	1
V&V Disposition and Status	OK
V&V Charge Time	8.2775382862389

A.2 Comments