

V&V Reference Report

L2 ASCDS Version : 8.4.3.1

Observation 58741 - L2 Version 2
Chandra X-Ray Center

L2 Processing Date : Apr 11 2012

Contents

1	Front	2
2	OBI	3
2.1	OBI	3
2.1.1	Images	3
2.1.2	Bias	3
2.1.3	Parameters	4
2.1.4	Events	4
2.2	Compared Parameters	5
2.3	Star Slots	6
2.4	FID Slots	6
A	Summary	7
A.1	Status	7
A.2	Comments	7

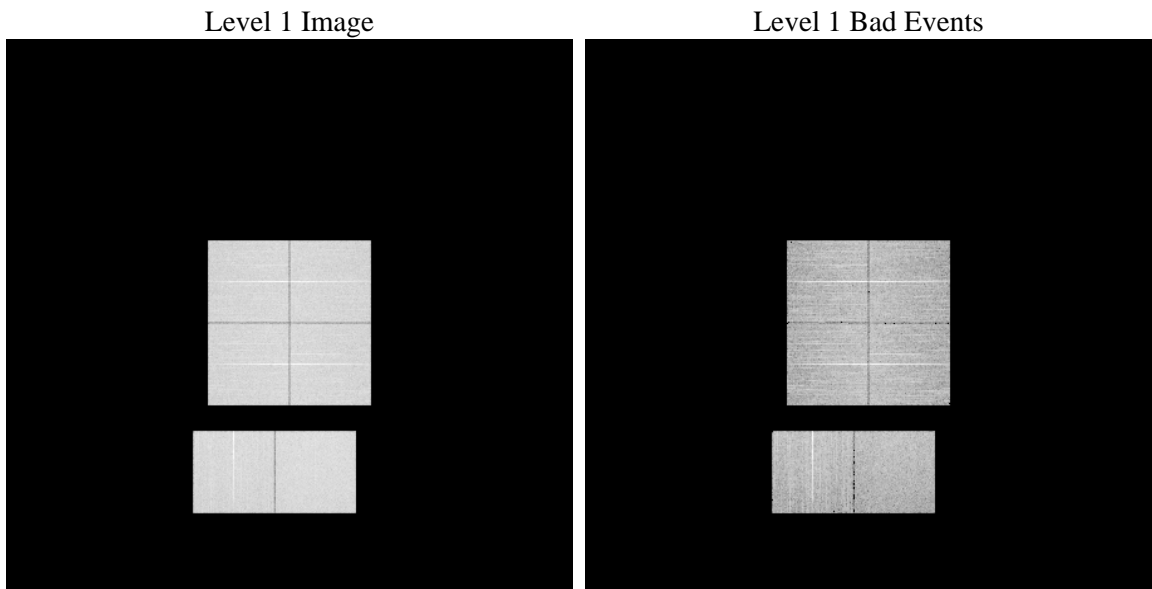
1 Front

seq_num	 	Sequence number
obs_id	58741	Observation id
title	ACIS-012367 diagnostics	Proposal title
observer	CHANDRA engineering request/realtime commanding	Principal investig
object	 	Source name
dtcycle	0	
cycle	P	events from which exps? Prim/Second/Both
ra_targ	0.0	Observer's specified target RA [deg]
dec_targ	0.0	Observer's specified target Dec [deg]
ra_nom	14.027484220809	Nominal RA [deg]
dec_nom	-19.989758860892	Nominal Dec [deg]
roll_nom	351.13776453222	Nominal Roll [deg]
revision	2	Processing version of data
ontime	7794.8766852021	Sum of GTIs [s]
livetime	7696.1732631028	Livetime [s]
ontime0	7794.8356451988	Sum of GTIs [s]
ontime1	7794.7946051955	Sum of GTIs [s]
ontime2	7794.7535651922	Sum of GTIs [s]
ontime3	7794.9177252054	Sum of GTIs [s]
ontime6	7794.7125251889	Sum of GTIs [s]
ontime7	7794.8766852021	Sum of GTIs [s]
l2events	814805	Number of level 2 events

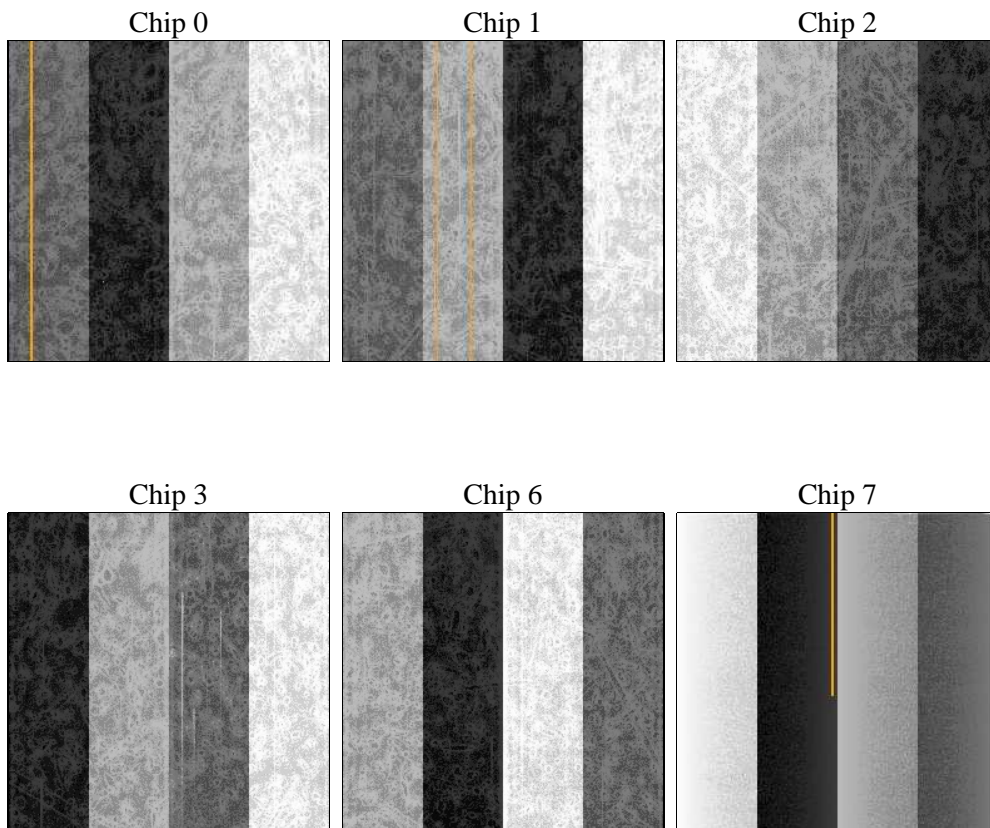
2 OBI

2.1 OBI

2.1.1 Images



2.1.2 Bias



2.1.3 Parameters

obi_num	0	Obi number	sched_exp_time	0.0	[s] Scheduled observation exposure time
ascdsver	8.4.3.1	Processing system revision	ontime	7794.8766852021	Sum of GTIs [s]
caldsver	4.4.9	 	ontime0	7794.8356451988	Sum of GTIs [s]
date	2012-04-11T16:24:43	Date and time of file creation	ontime1	7794.7946051955	Sum of GTIs [s]
revision	2	Processing version of data	ontime2	7794.7535651922	Sum of GTIs [s]
			ontime3	7794.9177252054	Sum of GTIs [s]
			ontime6	7794.7125251889	Sum of GTIs [s]
			ontime7	7794.8766852021	Sum of GTIs [s]
			l1events	1253111	Number of level 1 events

2.1.4 Events

	ccd 0	ccd 1	ccd 2	ccd 3	ccd 6	ccd 7		ccd 0	ccd 1	ccd 2	ccd 3	ccd 6	ccd 7
level 1 events	202518	199686	206674	205838	211764	226631	grade 0 events	73590	73885	76205	76590	76534	37148
rejected events	67170	62613	69146	68266	69183	58714		36%	37%	36%	37%	36%	16%
rejected %	33%	31%	33%	33%	32%	25%	grade 1 events	529	463	564	502	428	178
								0%	0%	0%	0%	0%	0%
							grade 2 events	23683	24617	23577	23506	24960	36669
								11%	12%	11%	11%	11%	16%
							grade 3 events	8884	8800	9076	9120	8836	16451
								4%	4%	4%	4%	4%	7%
							grade 4 events	8837	8987	8969	9127	9025	16177
								4%	4%	4%	4%	4%	7%
							grade 5 events	3744	3854	3466	4014	4091	9864
								1%	1%	1%	1%	1%	4%
							grade 6 events	20415	20835	19767	19283	23282	61549
								10%	10%	9%	9%	10%	27%
							grade 7 events	62836	58245	65050	63696	64608	48595
								31%	29%	31%	30%	30%	21%

2.2 Compared Parameters

Parameter	Planned	Actual
Instrument	ACIS	ACIS
Detector	ACIS-012367	ACIS-012367
Grating	NONE	NONE
Data mode	FAINT	FAINT
Observation mode	SECONDARY	SECONDARY
[deg] Pointing RA	0	14.02748422080875
[deg] Pointing Dec	0	-19.98975886089216
[deg] Pointing Roll	0.0	351.1377645322178
[mm] SIM focus pos	-0.782348	-0.7809083437167272
[mm] SIM defocus	0	0.7524282956875696
[mm] SIM translation stage pos	-233.592463	250.466033080201
[mm] SIM translation stage offset	0	-0.01005468664627074
[s] Observation start time (MET)	277115492.829965	277115491.80496
Observation start date	2006-10-13T08:31:33	2006-10-13T08:31:31
[s] Observation end time (MET)	277133606.630819	277133605.60581
Observation end date	2006-10-13T13:33:27	2006-10-13T13:33:25
Read mode	TIMED	TIMED

Parameter	Planned	Actual
Obspar format version number	7	7
Obspar file type	PREDICTED	ACTUAL
Obspar update status	NONE	UPDATED
On-chip summing requested	N	N
Subarray requested	NONE	NONE
Alternating exposures requested	N	N
[s] Primary exposure time	3.2	3.2

2.3 Star Slots

2.4 FID Slots

A Summary

A.1 Status

V&V Scientist	Beth Sundheim
V&V Date (YYYY-MM-DD)	2012.04.11
V&V Edition	1
V&V Disposition and Status	OK
V&V Charge Time	7.7948766852021

A.2 Comments