

V&V Reference Report

L2 ASCDS Version : 8.4.3.1

Observation 58611 - L2 Version 3
Chandra X-Ray Center

L2 Processing Date : Apr 16 2012

Contents

1	Front	2
2	OBI	3
2.1	OBI	3
2.1.1	Images	3
2.1.2	Bias	3
2.1.3	Parameters	4
2.1.4	Events	4
2.2	Compared Parameters	5
2.3	Star Slots	6
2.4	FID Slots	6
A	Summary	7
A.1	Status	7
A.2	Comments	7

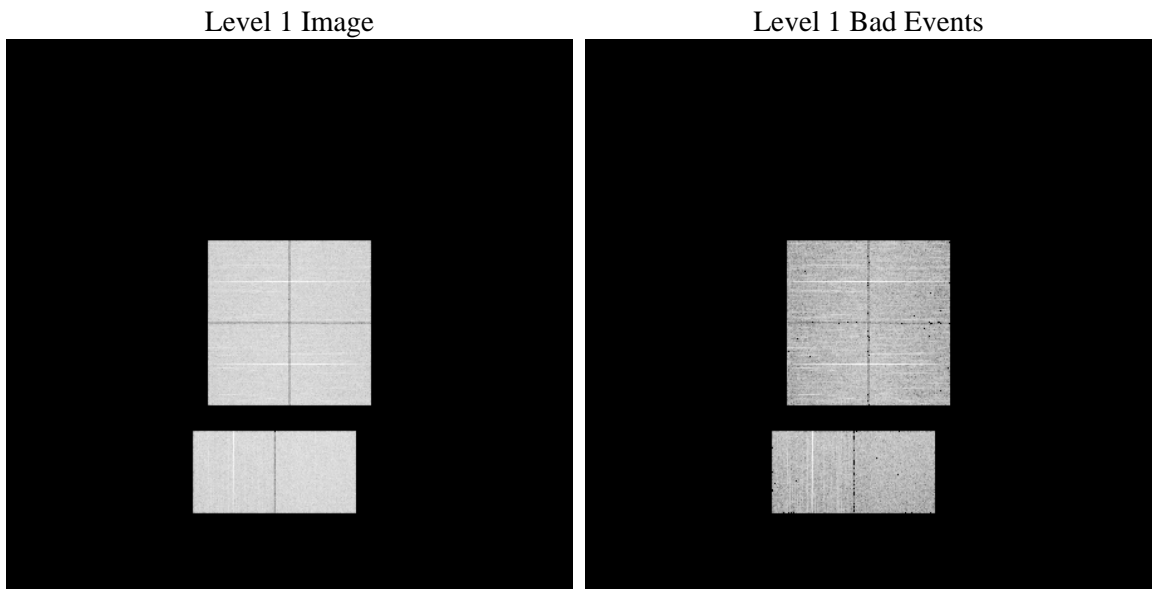
1 Front

seq_num	 	Sequence number
obs_id	58611	Observation id
title	ACIS-012367 diagnostics	Proposal title
observer	CHANDRA engineering request/realtime commanding	Principal investig
object	 	Source name
dtcycle	0	
cycle	P	events from which exps? Prim/Second/Both
ra_targ	0.0	Observer's specified target RA [deg]
dec_targ	0.0	Observer's specified target Dec [deg]
ra_nom	115.64826691721	Nominal RA [deg]
dec_nom	0.089670457594557	Nominal Dec [deg]
roll_nom	61.630386851407	Nominal Roll [deg]
revision	3	Processing version of data
ontime	5227.6651546359	Sum of GTIs [s]
livetime	5161.4693107259	Livetime [s]
ontime0	5227.6241146326	Sum of GTIs [s]
ontime1	5227.5830746293	Sum of GTIs [s]
ontime2	5227.542034626	Sum of GTIs [s]
ontime3	5227.7061946392	Sum of GTIs [s]
ontime6	5227.5009946227	Sum of GTIs [s]
ontime7	5227.6651546359	Sum of GTIs [s]
l2events	508509	Number of level 2 events

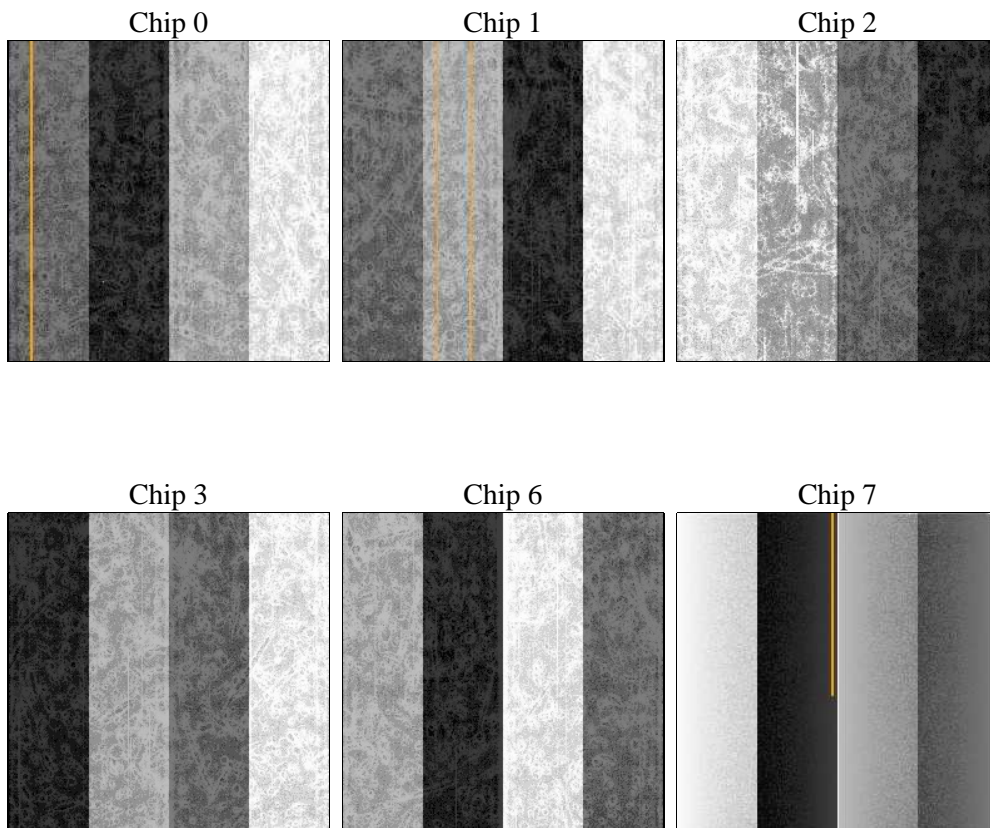
2 OBI

2.1 OBI

2.1.1 Images



2.1.2 Bias



2.1.3 Parameters

obi_num	0	Obi number	sched_exp_time	0.0	[s] Scheduled observation exposure time
ascdsver	8.4.3.1	Processing system revision	ontime	5227.6651546359	Sum of GTIs [s]
caldsver	4.4.9	 	ontime0	5227.6241146326	Sum of GTIs [s]
date	2012-04-16T13:27:38	Date and time of file creation	ontime1	5227.5830746293	Sum of GTIs [s]
revision	3	Processing version of data	ontime2	5227.542034626	Sum of GTIs [s]
			ontime3	5227.7061946392	Sum of GTIs [s]
			ontime6	5227.5009946227	Sum of GTIs [s]
			ontime7	5227.6651546359	Sum of GTIs [s]
			l1events	807604	Number of level 1 events

2.1.4 Events

	ccd 0	ccd 1	ccd 2	ccd 3	ccd 6	ccd 7		ccd 0	ccd 1	ccd 2	ccd 3	ccd 6	ccd 7
level 1 events	129656	127821	133790	133390	136156	146791	grade 0 events	47582	46390	48347	48295	48445	23777
rejected events	44563	43001	47740	47926	47071	41316		36%	36%	36%	36%	35%	16%
rejected %	34%	33%	35%	35%	34%	28%	grade 1 events	306	305	385	366	272	107
								0%	0%	0%	0%	0%	0%
							grade 2 events	15216	15707	15013	14947	15956	23092
								11%	12%	11%	11%	11%	15%
							grade 3 events	5626	5596	5788	5854	5776	10302
								4%	4%	4%	4%	4%	7%
							grade 4 events	5610	5548	5887	5878	5849	10236
								4%	4%	4%	4%	4%	6%
							grade 5 events	2366	2524	2377	2765	2726	6712
								1%	1%	1%	2%	2%	4%
							grade 6 events	12759	13208	12663	12230	14853	40106
								9%	10%	9%	9%	10%	27%
							grade 7 events	40191	38543	43330	43055	42279	32459
								30%	30%	32%	32%	31%	22%

2.2 Compared Parameters

Parameter	Planned	Actual	Parameter	Planned	Actual
Instrument	ACIS	ACIS	Obspar format version number	7	7
Detector	ACIS-012367	ACIS-012367	Obspar file type	PREDICTED	ACTUAL
Grating	NONE	NONE	Obspar update status	OVERRIDE	OVERRIDE
Data mode	FAINT	FAINT	Number of optional ACIS chips dropped	0	0
Observation mode	SECONDARY	SECONDARY	On-chip summing requested	N	N
[deg] Pointing RA	115.6505148849898	115.6482669172072	Subarray requested	NONE	NONE
[deg] Pointing Dec	0.08901519036202668	0.0896704575945569	Alternating exposures requested	N	N
[deg] Pointing Roll	61.61679127569352	61.63038685140749	[s] Primary exposure time	3.2	3.2
[mm] SIM focus pos	-0.78090834371673	-0.78090834371673			
[mm] SIM defocus	0.7524282194390134	0.7524282194390134			
[mm] SIM translation stage pos	250.4635187649	250.4635187649			
[mm] SIM translation stage offset	-0.007542945905271381	-0.007542945905271381			
[s] Observation start time (MET)	284026026.756496	284026026.756496			
Observation start date	2007-01-01T08:35:00	2007-01-01T08:07:06			
[s] Observation end time (MET)	284031706.520366	284031706.520366			
Observation end date	2007-01-01T08:35:00	2007-01-01T09:41:46			
Read mode	TIMED	TIMED			

2.3 Star Slots

2.4 FID Slots

A Summary

A.1 Status

V&V Scientist	Jen Lauer
V&V Date (YYYY-MM-DD)	2012.04.19
V&V Edition	1
V&V Disposition and Status	OK
V&V Charge Time	5.2276651546359

A.2 Comments