

V&V Reference Report

L2 ASCDS Version : 8.4.4

Observation 58351 - L2 Version 2
Chandra X-Ray Center

L2 Processing Date : Apr 26 2012

Contents

1	Front	2
2	OBI	3
2.1	OBI	3
2.1.1	Images	3
2.1.2	Bias	3
2.1.3	Parameters	4
2.1.4	Events	4
2.2	Compared Parameters	5
2.3	Star Slots	6
2.4	FID Slots	6
A	Summary	7
A.1	Status	7
A.2	Comments	7

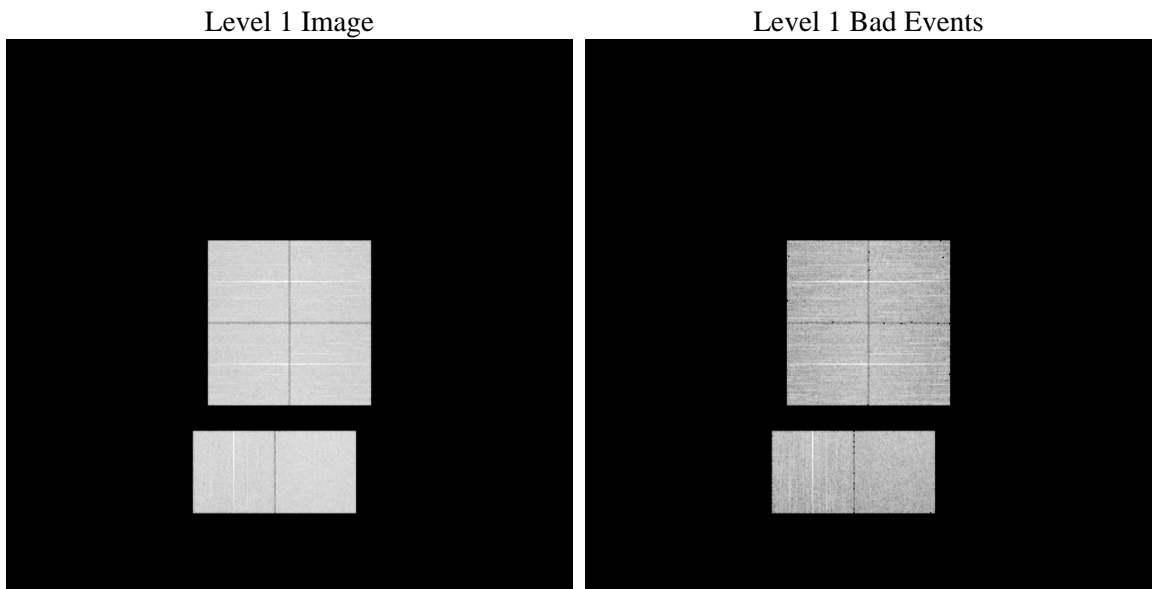
1 Front

seq_num	 	Sequence number
obs_id	58351	Observation id
title	ACIS-012367 diagnostics	Proposal title
observer	CHANDRA engineering request/realtime commanding	Principal investig
object	 	Source name
dtcycle	0	
cycle	P	events from which exps? Prim/Second/Both
ra_targ	0.0	Observer's specified target RA [deg]
dec_targ	0.0	Observer's specified target Dec [deg]
ra_nom	263.04374717427	Nominal RA [deg]
dec_nom	-51.990063810279	Nominal Dec [deg]
roll_nom	347.40309059004	Nominal Roll [deg]
revision	2	Processing version of data
ontime	7791.9999710321	Sum of GTIs [s]
livetime	7693.3329756198	Livetime [s]
ontime0	7788.7590403557	Sum of GTIs [s]
ontime1	7791.9999710321	Sum of GTIs [s]
ontime2	7791.9999710321	Sum of GTIs [s]
ontime3	7791.9999710321	Sum of GTIs [s]
ontime6	7791.9999710321	Sum of GTIs [s]
ontime7	7791.9999710321	Sum of GTIs [s]
l2events	693380	Number of level 2 events

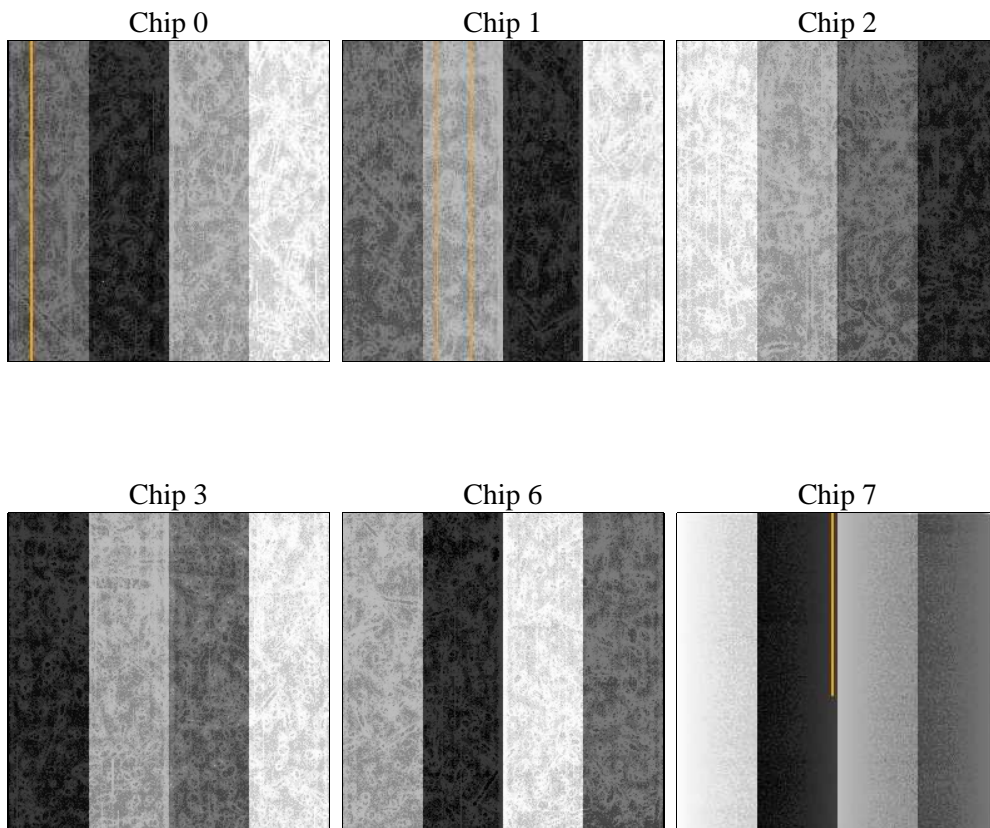
2 OBI

2.1 OBI

2.1.1 Images



2.1.2 Bias



2.1.3 Parameters

obi_num	0	Obi number	sched_exp_time	0.0	[s] Scheduled observation exposure time
ascdsver	8.4.4	Processing system revision	ontime	7791.9999710321	Sum of GTIs [s]
caldsver	4.4.9	 	ontime0	7788.7590403557	Sum of GTIs [s]
date	2012-04-27T02:12:51	Date and time of file creation	ontime1	7791.9999710321	Sum of GTIs [s]
revision	2	Processing version of data	ontime2	7791.9999710321	Sum of GTIs [s]
			ontime3	7791.9999710321	Sum of GTIs [s]
			ontime6	7791.9999710321	Sum of GTIs [s]
			ontime7	7791.9999710321	Sum of GTIs [s]
			l1events	1138409	Number of level 1 events

2.1.4 Events

	ccd 0	ccd 1	ccd 2	ccd 3	ccd 6	ccd 7		ccd 0	ccd 1	ccd 2	ccd 3	ccd 6	ccd 7
level 1 events	181847	181917	186336	187157	191662	209490	grade 0 events	61889	61702	63362	64598	64145	32138
rejected events	67527	66308	70943	70579	70871	61038		34%	33%	34%	34%	33%	15%
rejected %	37%	36%	38%	37%	36%	29%	grade 1 events	460	408	470	498	398	151
								0%	0%	0%	0%	0%	0%
							grade 2 events	20381	21179	19872	20135	21209	32204
								11%	11%	10%	10%	11%	15%
							grade 3 events	7489	7507	7772	7661	7905	14206
								4%	4%	4%	4%	4%	6%
							grade 4 events	7479	7499	7657	7749	7665	14167
								4%	4%	4%	4%	3%	6%
							grade 5 events	3799	3868	3534	4215	4192	10225
								2%	2%	1%	2%	2%	4%
							grade 6 events	17142	17765	16775	16435	19912	55737
								9%	9%	9%	8%	10%	26%
							grade 7 events	63208	61989	66894	65866	66236	50662
								34%	34%	35%	35%	34%	24%

2.2 Compared Parameters

Parameter	Planned	Actual	Parameter	Planned	Actual
Instrument	ACIS	ACIS	Obspar format version number	7	7
Detector	ACIS-012367	ACIS-012367	Obspar file type	PREDICTED	ACTUAL
Grating	NONE	NONE	Obspar update status	NONE	UPDATED
Data mode	FAINT	FAINT	On-chip summing requested	N	N
Observation mode	SECONDARY	SECONDARY	Subarray requested	NONE	NONE
[deg] Pointing RA	0	263.0437471742704	Alternating exposures requested	N	N
[deg] Pointing Dec	0	-51.99006381027907	[s] Primary exposure time	3.2	3.2
[deg] Pointing Roll	0.0	347.4030905900417			
[mm] SIM focus pos	-0.782348	-0.6828225247311905			
[mm] SIM defocus	0	0.8505141146731063			
[mm] SIM translation stage pos	-233.592463	250.466033080201			
[mm] SIM translation stage offset	0	-0.01005468664627074			
[s] Observation start time (MET)	298819319.460764	298819318.43578			
Observation start date	2007-06-21T13:21:59	2007-06-21T13:21:58			
[s] Observation end time (MET)	298837099.111614	298837098.08663			
Observation end date	2007-06-21T18:18:19	2007-06-21T18:18:18			
Read mode	TIMED	TIMED			

2.3 Star Slots

2.4 FID Slots

A Summary

A.1 Status

V&V Scientist	Jen Lauer
V&V Date (YYYY-MM-DD)	2012.04.27
V&V Edition	1
V&V Disposition and Status	OK
V&V Charge Time	7.7919999710321

A.2 Comments