

V&V Reference Report

L2 ASCDS Version : 8.4.4

Observation 58191 - L2 Version 2
Chandra X-Ray Center

L2 Processing Date : May 1 2012

Contents

1	Front	2
2	OBI	3
2.1	OBI	3
2.1.1	Images	3
2.1.2	Bias	3
2.1.3	Parameters	4
2.1.4	Events	4
2.2	Compared Parameters	5
2.3	Star Slots	6
2.4	FID Slots	6
A	Summary	7
A.1	Status	7
A.2	Comments	7

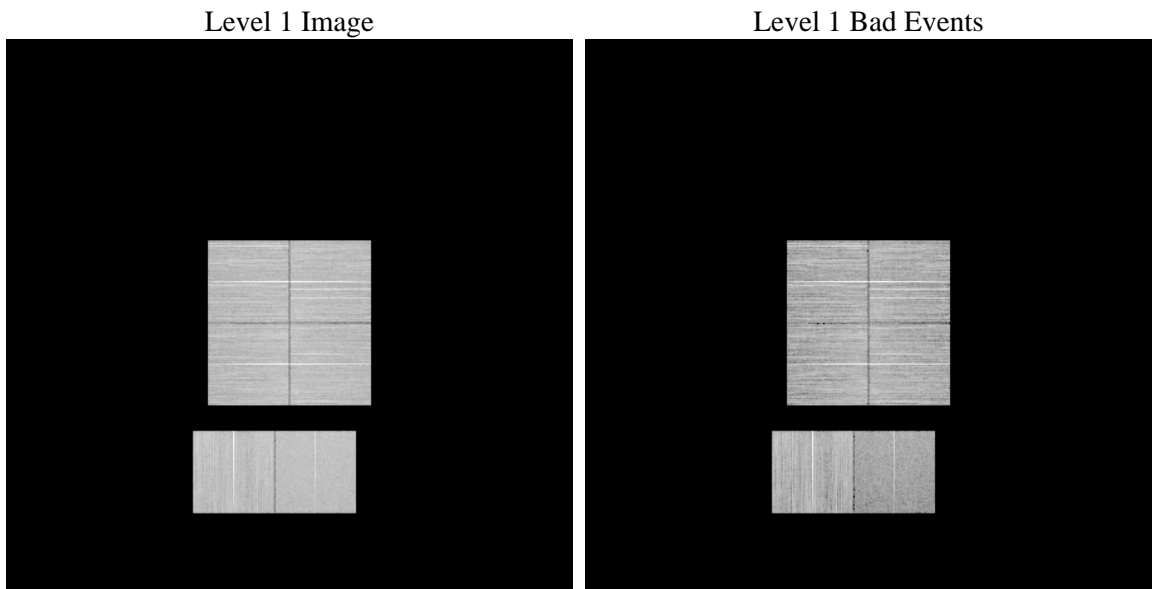
1 Front

seq_num	 	Sequence number
obs_id	58191	Observation id
title	ACIS-012367 diagnostics	Proposal title
observer	CHANDRA engineering request/realtime commanding	Principal investig
object	 	Source name
dtcycle	0	
cycle	P	events from which exps? Prim/Second/Both
ra_targ	0.0	Observer's specified target RA [deg]
dec_targ	0.0	Observer's specified target Dec [deg]
ra_nom	239.92433269562	Nominal RA [deg]
dec_nom	24.981560980284	Nominal Dec [deg]
roll_nom	287.2491279503	Nominal Roll [deg]
revision	2	Processing version of data
ontime	7883.515037775	Sum of GTIs [s]
livetime	7783.6892234839	Livetime [s]
ontime0	6232.4614536762	Sum of GTIs [s]
ontime1	6528.7103888988	Sum of GTIs [s]
ontime2	6107.3441299796	Sum of GTIs [s]
ontime3	6282.5204052329	Sum of GTIs [s]
ontime6	6719.8450161815	Sum of GTIs [s]
ontime7	7883.515037775	Sum of GTIs [s]
l2events	565534	Number of level 2 events

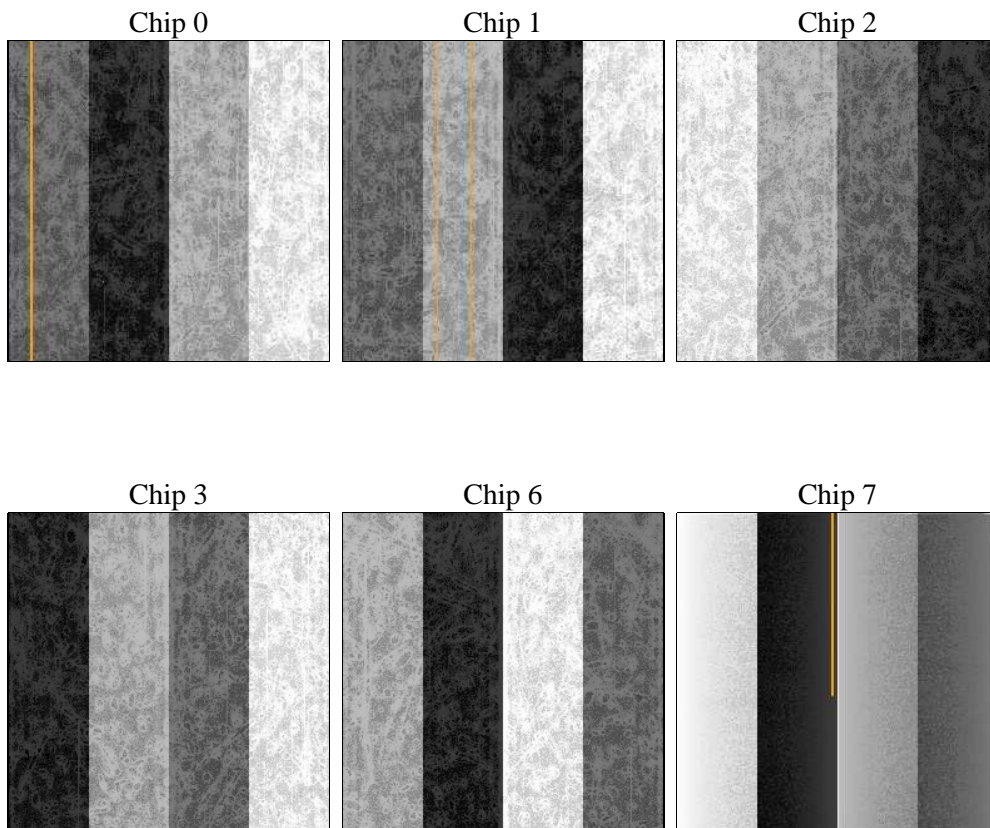
2 OBI

2.1 OBI

2.1.1 Images



2.1.2 Bias



2.1.3 Parameters

obi_num	1	Obi number	sched_exp_time	0.0	[s] Scheduled observation exposure time
ascdsver	8.4.4	Processing system revision	ontime	7883.515037775	Sum of GTIs [s]
caldsver	4.4.9	 	ontime0	6232.4614536762	Sum of GTIs [s]
date	2012-05-01T22:56:09	Date and time of file creation	ontime1	6528.7103888988	Sum of GTIs [s]
revision	2	Processing version of data	ontime2	6107.3441299796	Sum of GTIs [s]
			ontime3	6282.5204052329	Sum of GTIs [s]
			ontime6	6719.8450161815	Sum of GTIs [s]
			ontime7	7883.515037775	Sum of GTIs [s]
			l1events	1422884	Number of level 1 events

2.1.4 Events

	ccd 0	ccd 1	ccd 2	ccd 3	ccd 6	ccd 7		ccd 0	ccd 1	ccd 2	ccd 3	ccd 6	ccd 7
level 1 events	231139	241291	227761	235248	252020	235425	grade 0 events	46617	47902	46640	47881	51602	30041
rejected events	145123	150860	142715	147671	154388	86892		20%	19%	20%	20%	20%	12%
rejected %	62%	62%	62%	62%	61%	36%	grade 1 events	321	292	349	377	299	152
								0%	0%	0%	0%	0%	0%
							grade 2 events	15654	16838	15182	15689	17720	35849
								6%	6%	6%	6%	7%	15%
							grade 3 events	5558	6068	5498	5763	6294	13716
								2%	2%	2%	2%	2%	5%
							grade 4 events	5572	5896	5635	5896	6243	13615
								2%	2%	2%	2%	2%	5%
							grade 5 events	3013	3273	2735	3388	3555	10536
								1%	1%	1%	1%	1%	4%
							grade 6 events	12615	13763	12134	12388	15817	55366
								5%	5%	5%	5%	6%	23%
							grade 7 events	141789	147259	139588	143866	150490	76150
								61%	61%	61%	61%	59%	32%

2.2 Compared Parameters

Parameter	Planned	Actual	Parameter	Planned	Actual
Instrument	ACIS	ACIS	Obspar format version number	7	7
Detector	ACIS-012367	ACIS-012367	Obspar file type	PREDICTED	ACTUAL
Grating	NONE	NONE	Obspar update status	NONE	UPDATED
Data mode	FAINT	FAINT	On-chip summing requested	N	N
Observation mode	SECONDARY	SECONDARY	Subarray requested	NONE	NONE
[deg] Pointing RA	0	239.9243326956247	Alternating exposures requested	N	N
[deg] Pointing Dec	0	24.98156098028411	[s] Primary exposure time	3.2	3.2
[deg] Pointing Roll	0.0	287.2491279503017			
[mm] SIM focus pos	-0.782348	-0.6828225247311905			
[mm] SIM defocus	0	0.8505141146731063			
[mm] SIM translation stage pos	-233.592463	250.466033080201			
[mm] SIM translation stage offset	0	-0.01005468664627074			
[s] Observation start time (MET)	307273325.116581	307273324.09159			
Observation start date	2007-09-27T09:42:05	2007-09-27T09:42:04			
[s] Observation end time (MET)	307290739.86742	307290738.84243			
Observation end date	2007-09-27T14:32:20	2007-09-27T14:32:18			
Read mode	TIMED	TIMED			

2.3 Star Slots

2.4 FID Slots

A Summary

A.1 Status

V&V Scientist	Jen Lauer
V&V Date (YYYY-MM-DD)	2012.05.03
V&V Edition	1
V&V Disposition and Status	OK
V&V Charge Time	7.883515037775

A.2 Comments