

# V&V Reference Report

## L2 ASCDS Version : 7.6.7

Observation 5791 - L2 Version 002  
Chandra X-Ray Center

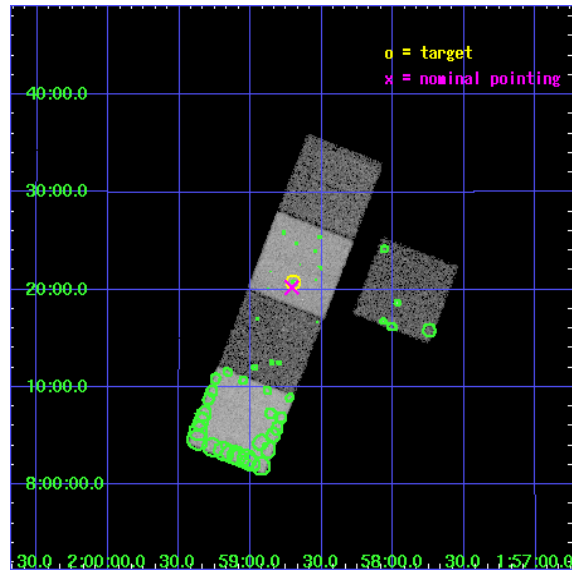
L2 Processing Date: Feb 15 2006

## Contents

<b>1</b>	<b>Front</b>	<b>2</b>
<b>2</b>	<b>OBI</b>	<b>3</b>
2.1	OBI . . . . .	3
2.1.1	Images . . . . .	3
2.1.2	Bias . . . . .	3
2.1.3	Parameters . . . . .	4
2.1.4	Events . . . . .	4
2.2	Compared Parameters . . . . .	5
2.3	Aspect . . . . .	6
2.4	Star Slots . . . . .	9
2.4.1	Slot 3 . . . . .	9
2.4.2	Slot 4 . . . . .	10
2.4.3	Slot 5 . . . . .	11
2.4.4	Slot 6 . . . . .	12
2.4.5	Slot 7 . . . . .	13
2.5	FID Slots . . . . .	14
2.5.1	Slot 0 . . . . .	14
2.5.2	Slot 1 . . . . .	15
2.5.3	Slot 2 . . . . .	16
<b>3</b>	<b>Point Sources</b>	<b>17</b>
<b>A</b>	<b>Summary</b>	<b>18</b>
A.1	Status . . . . .	18
A.2	Comments . . . . .	18

# 1 Front

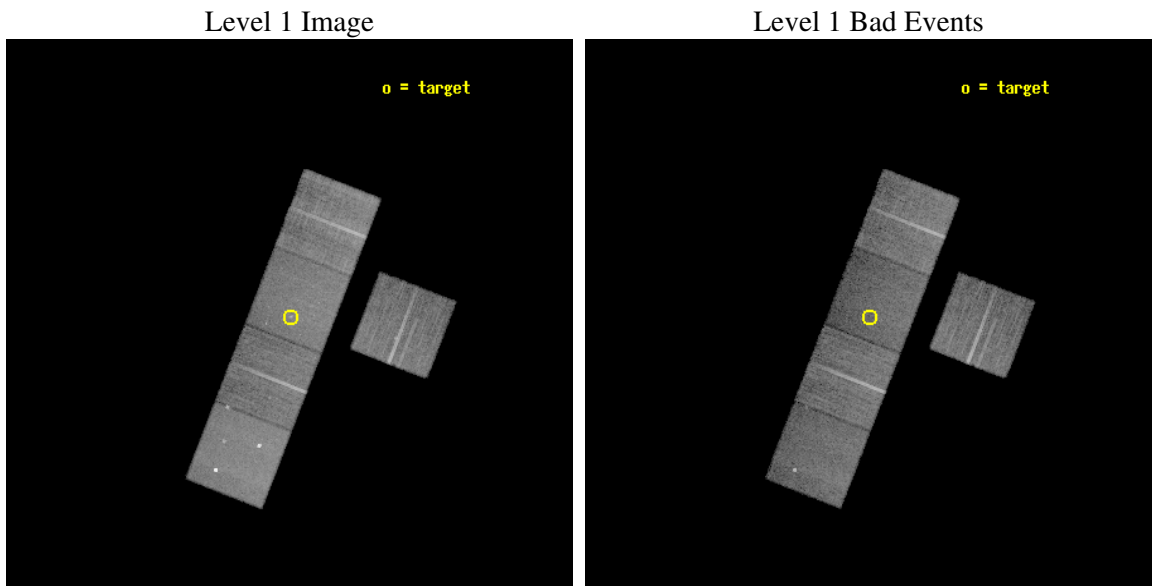
seq_num	800504
obs_id	5791
title	Dark Matter in Isolated Ellipticals and Groups
observer	Prof. Gordon Garmire
object	NGC766
dtcycle	0
cycle	P
ra_targ	29.675417
dec_targ	8.346583
ra_nom	29.677327558992
dec_nom	8.3371260293289
roll_nom	291.29568811346
revision	2
ontime	20177.899961203
livetime	19914.260843456
ontime3	20174.758990943
ontime5	20177.899961203
ontime6	20177.899961203
ontime7	20177.899961203
ontime8	20168.477000594
l2events	161390



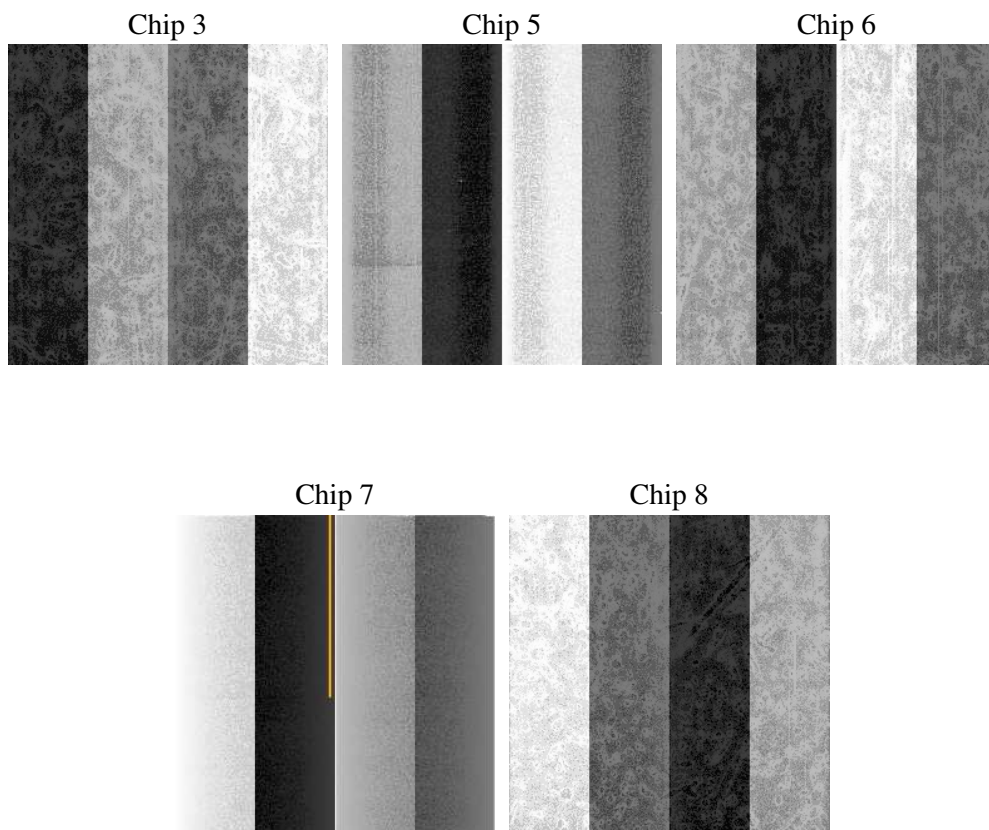
## 2 OBI

### 2.1 OBI

#### 2.1.1 Images



#### 2.1.2 Bias



### 2.1.3 Parameters

obi_num	0
ascdsver	7.6.7
caldbver	3.2.1
date	2006-02-16T01:41:32
revision	2

sched_exp_time	20000.000000
ontime	20231.225052059
ontime3	20228.084061921
ontime5	20231.225052059
ontime6	20231.225052059
ontime7	20231.225052059
ontime8	20221.802091449
l1events	687614

### 2.1.4 Events

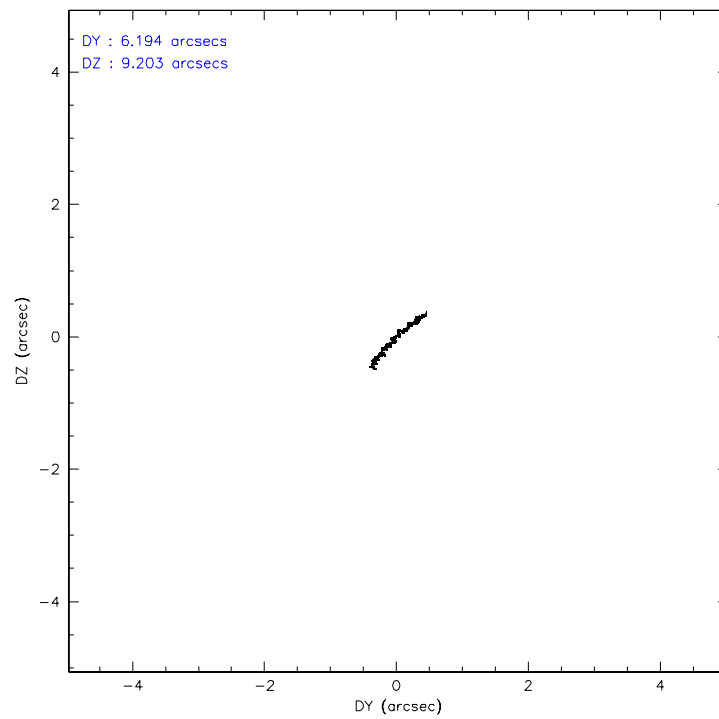
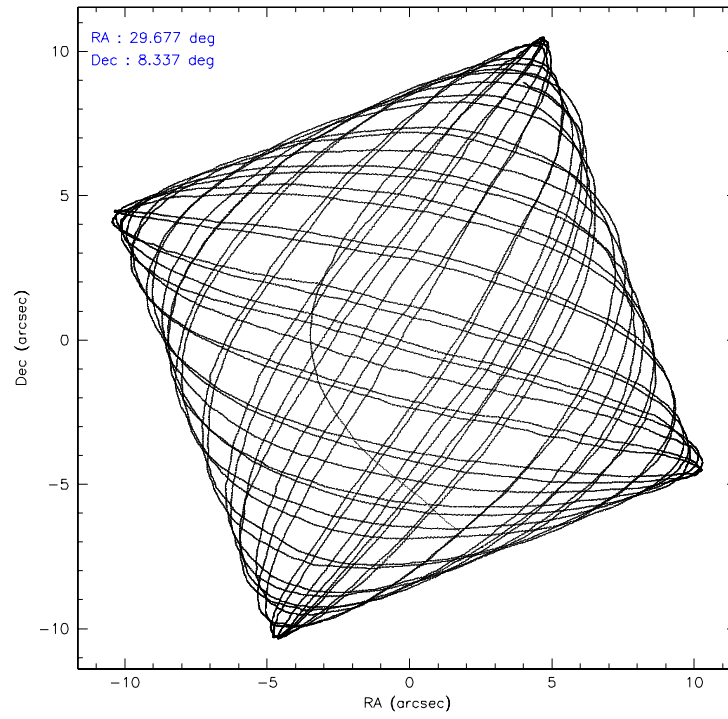
	ccd 3	ccd 5	ccd 6	ccd 7	ccd 8
level 1 events	116875	166999	118993	133365	151382
rejected events	105438	85348	106061	76520	116035
rejected %	90%	51%	89%	57%	76%

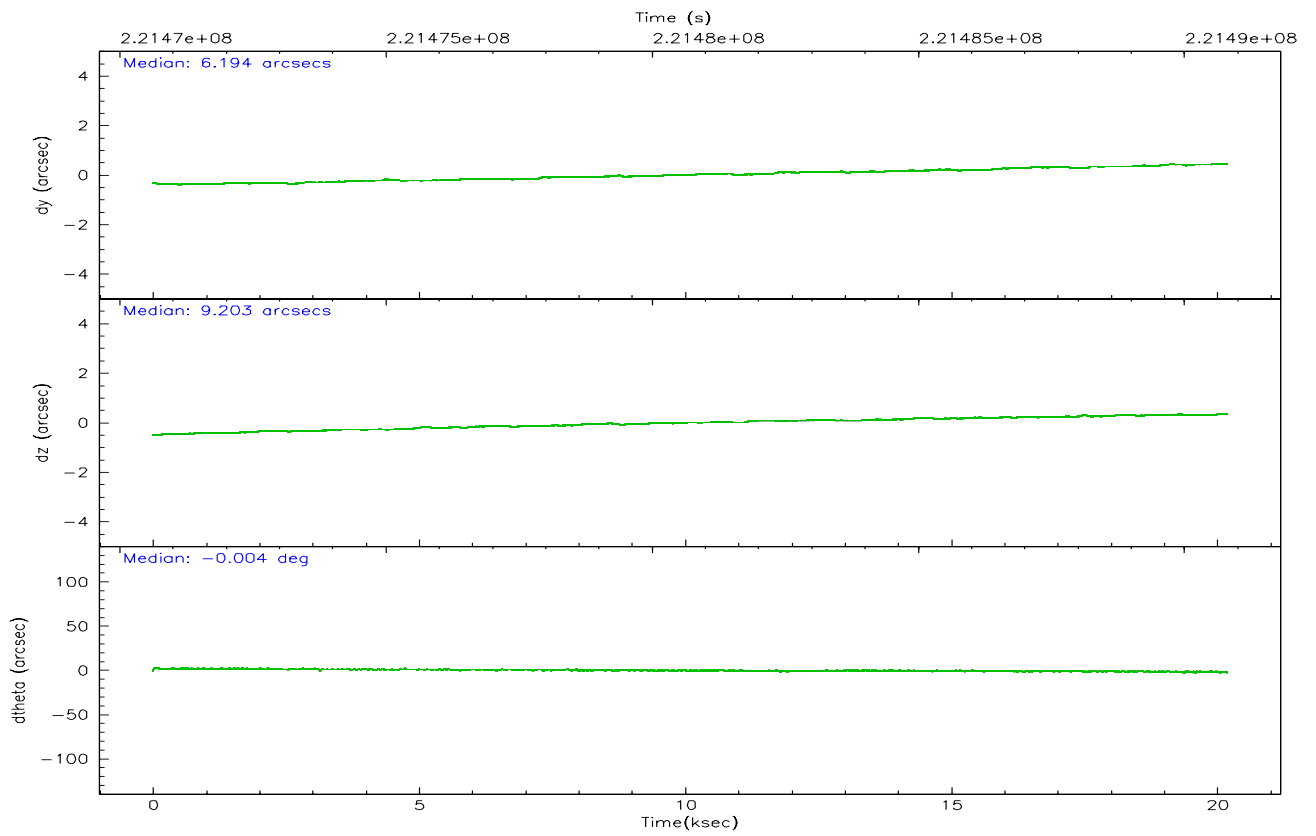
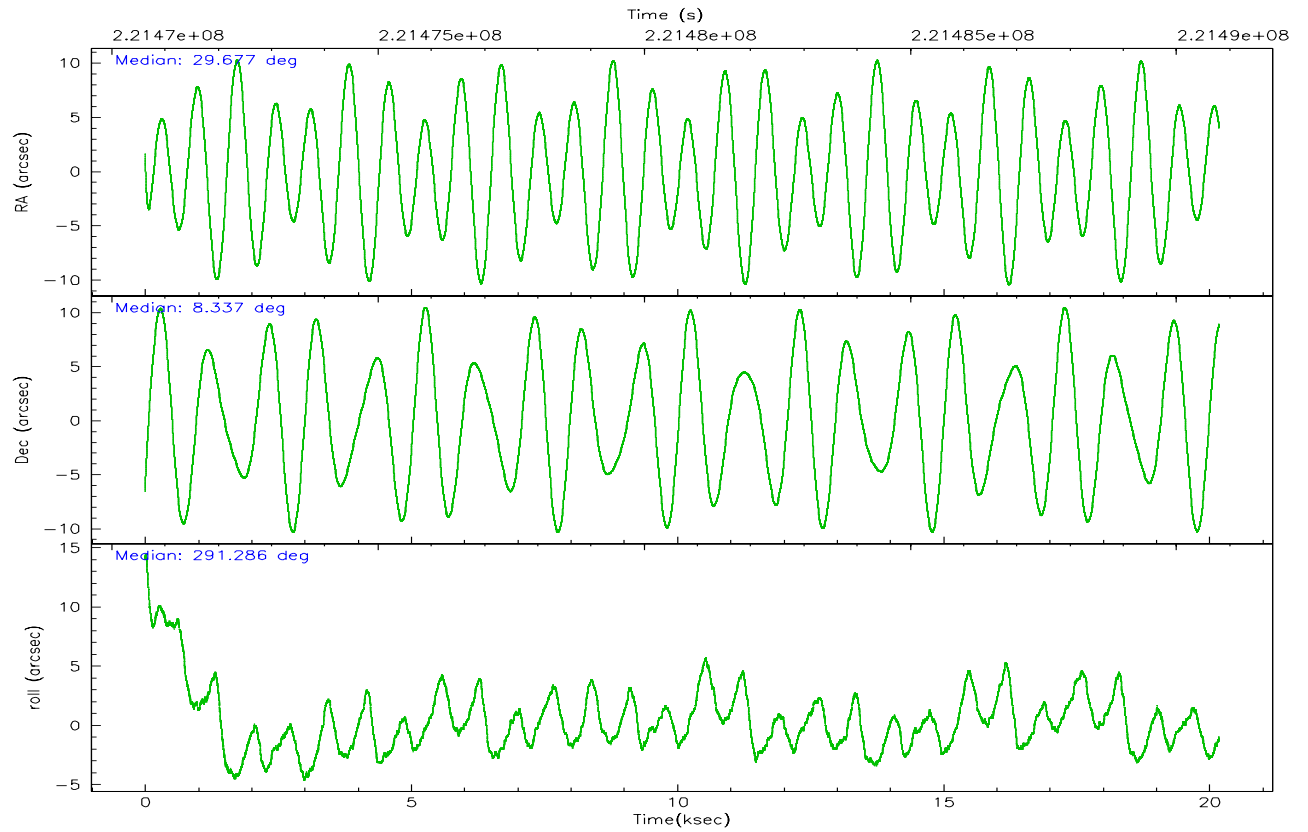
	ccd 3	ccd 5	ccd 6	ccd 7	ccd 8
grade 0 events	4320	8926	4886	4063	10962
	3%	5%	4%	3%	7%
grade 1 events	66	1129	66	70	117
	0%	0%	0%	0%	0%
grade 2 events	2351	26179	2656	13962	7693
	2%	15%	2%	10%	5%
grade 3 events	1274	1938	1440	3448	4050
	1%	1%	1%	2%	2%
grade 4 events	1327	2034	1392	3443	3673
	1%	1%	1%	2%	2%
grade 5 events	4596	8418	4718	10020	6683
	3%	5%	3%	7%	4%
grade 6 events	2194	42792	2588	32095	9085
	1%	25%	2%	24%	6%
grade 7 events	100747	75583	101247	66264	109119
	86%	45%	85%	49%	72%

## 2.2 Compared Parameters

Parameter	Planned	Actual	Parameter	Planned	Actual
Instrument	ACIS	ACIS	Obspar format version number	6	6
Detector	ACIS-35678	ACIS-35678	Obspar file type	PREDICTED	ACTUAL
Grating	NONE	NONE	Obspar update status	NONE	UPDATED
Data mode	VFAINT	VFAINT	On-chip summing requested	N	N
Observation mode	POINTING	POINTING	Subarray requested	NONE	NONE
Pointing RA	29.655606	29.67732755899194	Alternating exposures requested	N	N
Pointing Dec	8.353828	8.337126029328902	Primary exposure time	0.000000	3.1
Pointing Roll	291.142205	291.2956881134576			
SIM focus pos (mm)	-0.684267	-0.6828225247311905			
SIM defocus (mm)	0	0.001444936568705701			
SIM translation stage pos (mm)	-190.132523	-190.1425803651734			
SIM translation stage offset (mm)	0	0.01005778216563158			
Observation start time	221470801.184000	221469777.24907			
Observation start date	2005-01-07T07:38:57	2005-01-07T07:22:57			
Observation end time	221490801.184000	221491538.00005			
Observation end date	2005-01-07T13:12:17	2005-01-07T13:25:38			
Read mode	TIMED	TIMED			

## 2.3 Aspect





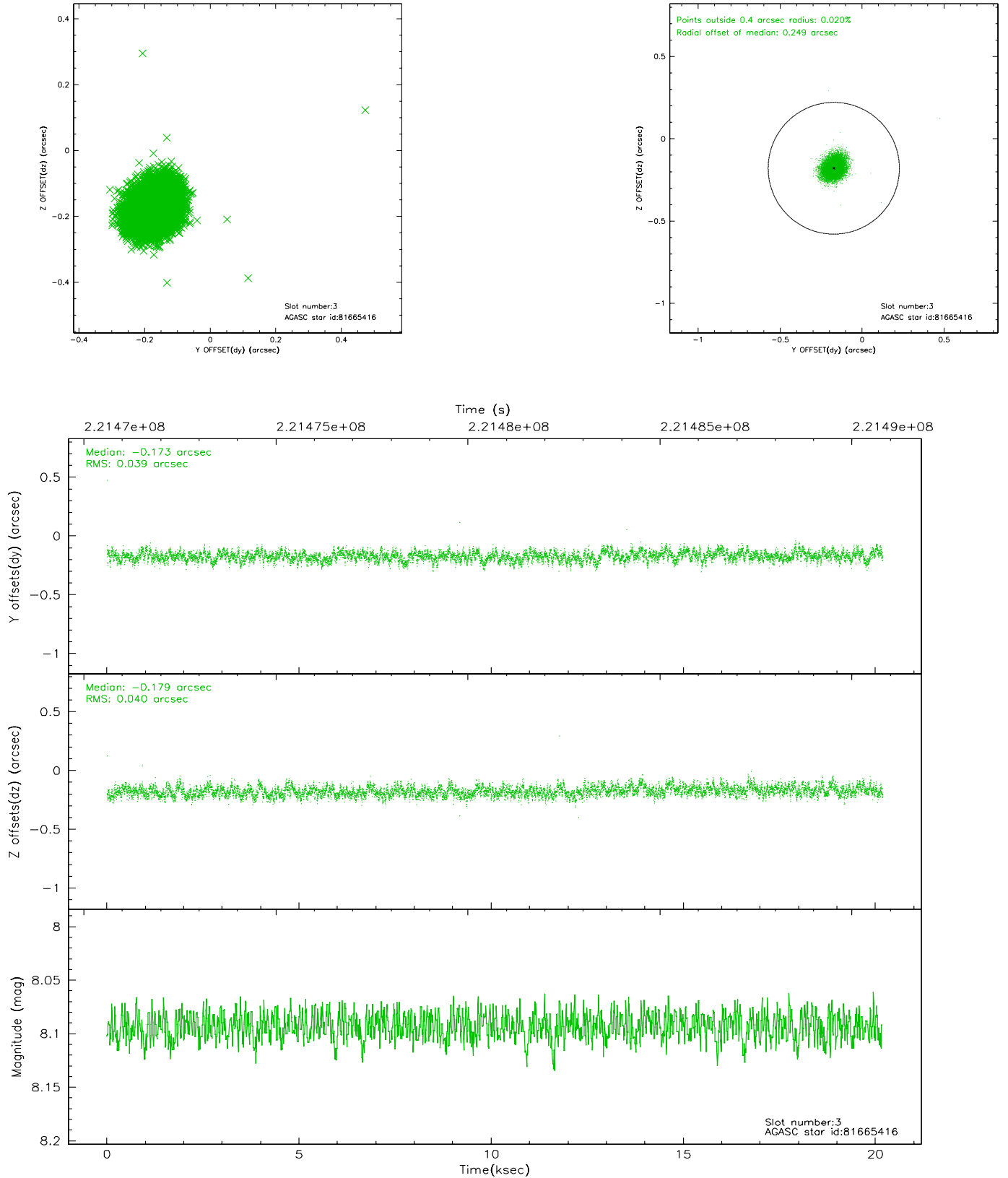
### Slot Statistics

slot	status	id	mag	n_pts	med_dy	med_dz	dr1	dr2	ra	dec	mean_y	mean_z
0	FID	ACIS-S-2	7.10	4924	-0.044	-0.028	0.015	0.024	0.000000	0.000000	-758.97	-1730.38
1	FID	ACIS-S-4	7.21	4924	0.062	0.029	0.019	0.030	0.000000	0.000000	2154.31	177.98
2	FID	ACIS-S-5	7.23	4924	-0.047	0.006	0.017	0.026	0.000000	0.000000	-1811.59	171.81
3	GUIDE	81665416	8.09	9846	-0.173	-0.179	0.059	0.095	29.170944	8.253807	-287.44	-1740.15
4	GUIDE	81665536	10.33	9837	0.186	0.145	0.194	0.304	30.263547	8.070248	1732.55	1653.77
5	GUIDE	81666448	9.83	9844	-0.182	0.079	0.113	0.185	29.785373	8.895570	-1651.81	1134.50
6	GUIDE	81668208	9.99	9841	0.216	-0.133	0.136	0.224	29.515621	7.942388	1202.00	-999.51
7	GUIDE	81668520	9.06	9843	-0.050	0.086	0.086	0.139	30.181336	8.202942	1181.59	1552.07

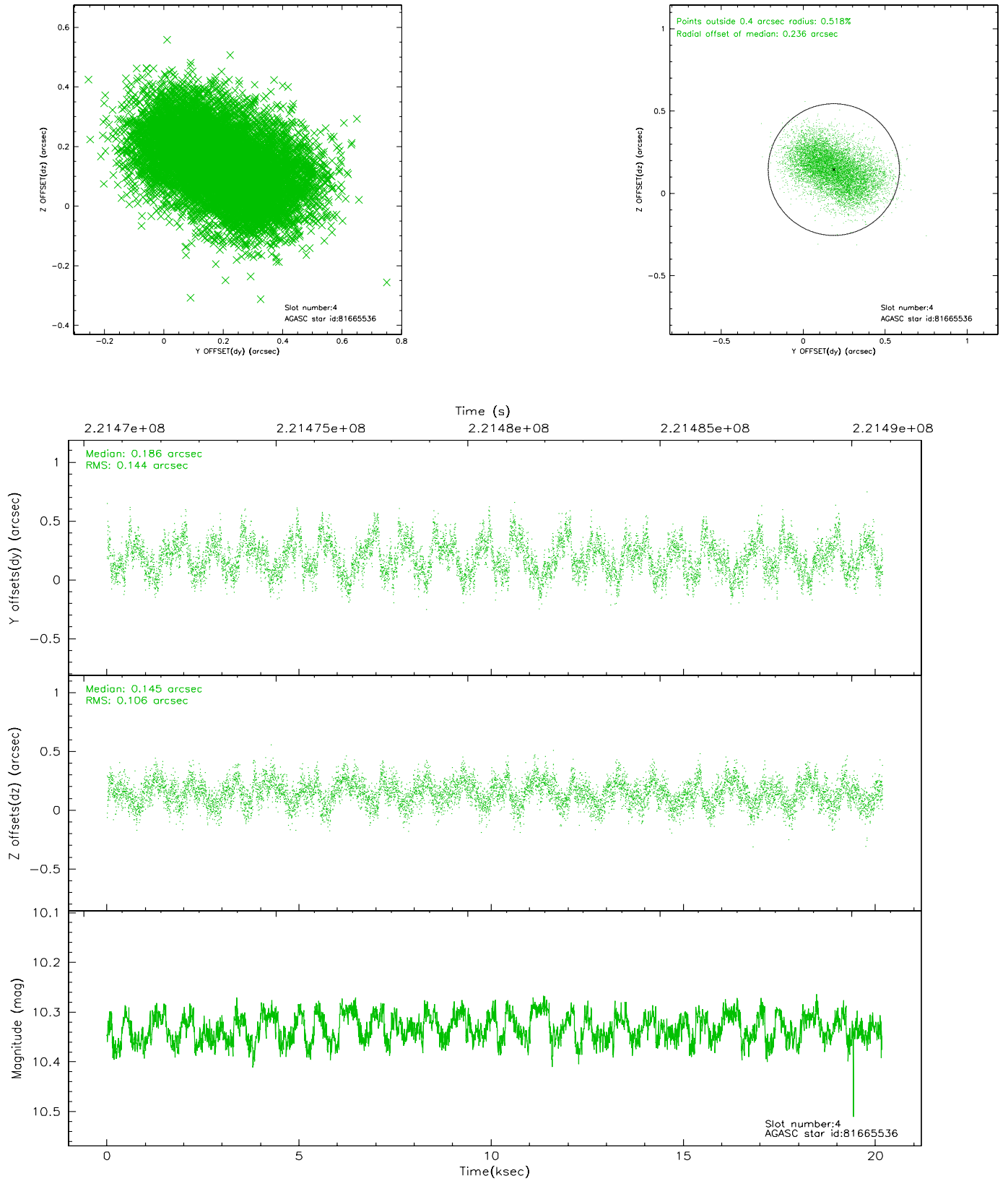


## 2.4 Star Slots

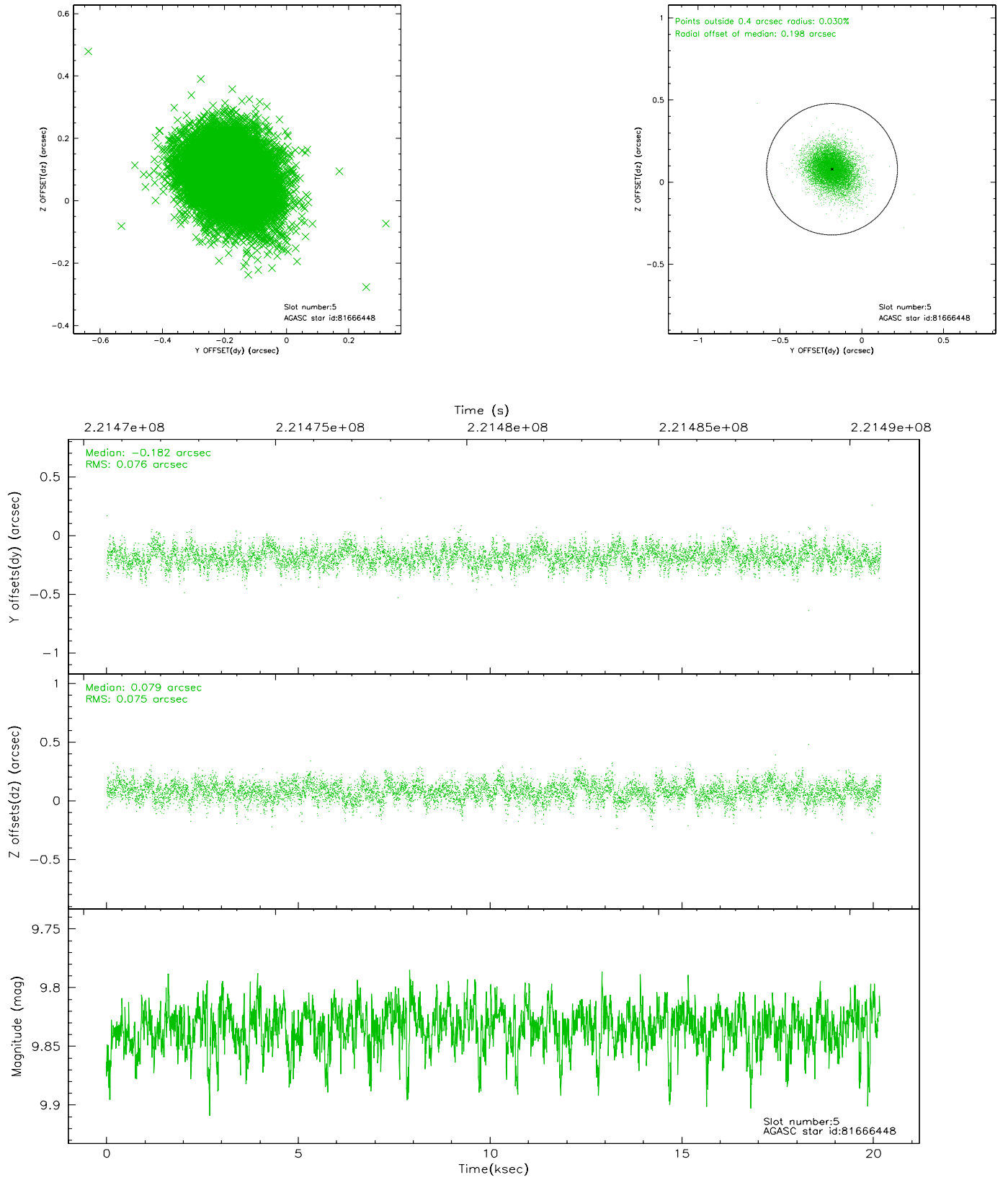
### 2.4.1 Slot 3



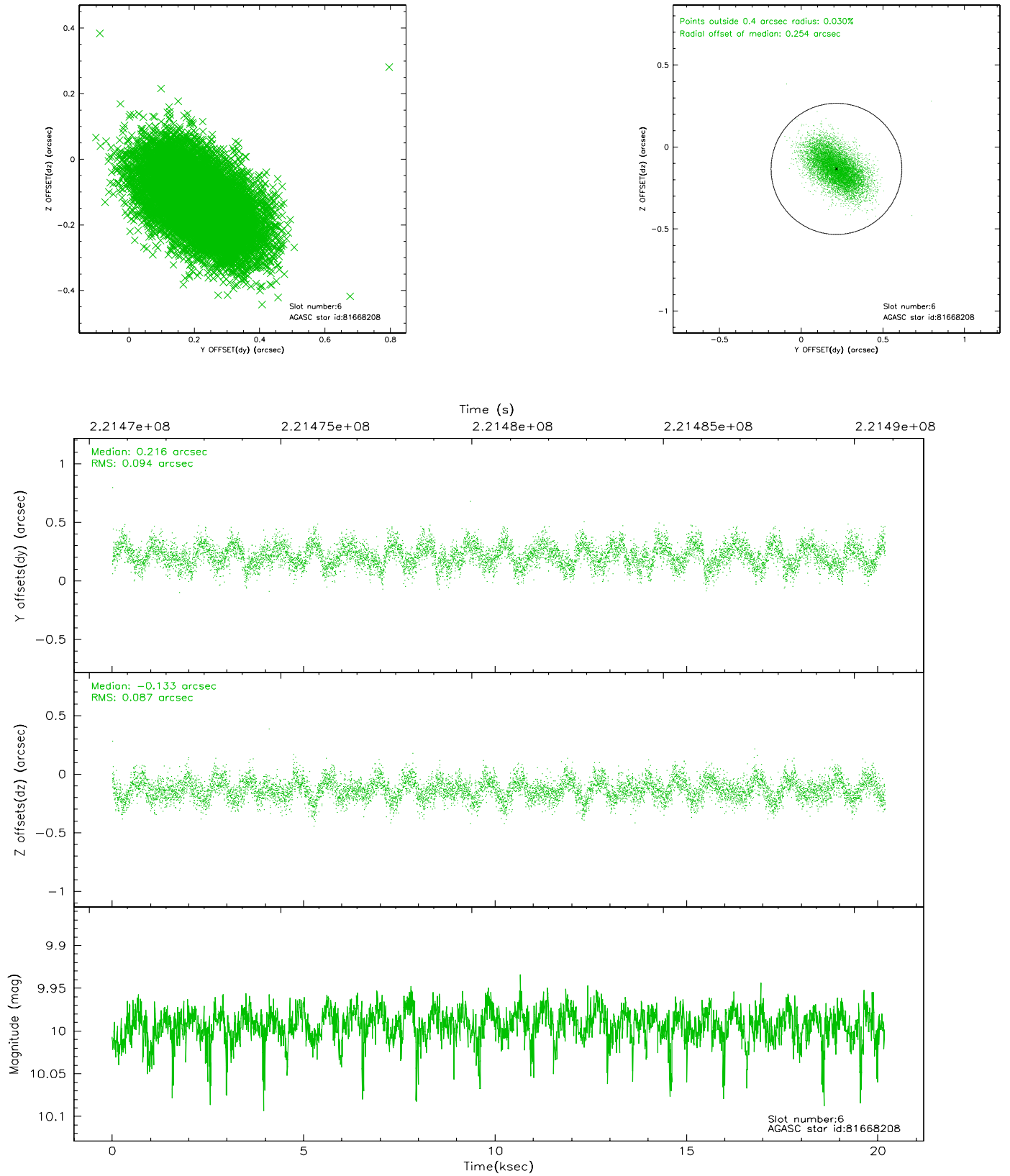
## 2.4.2 Slot 4



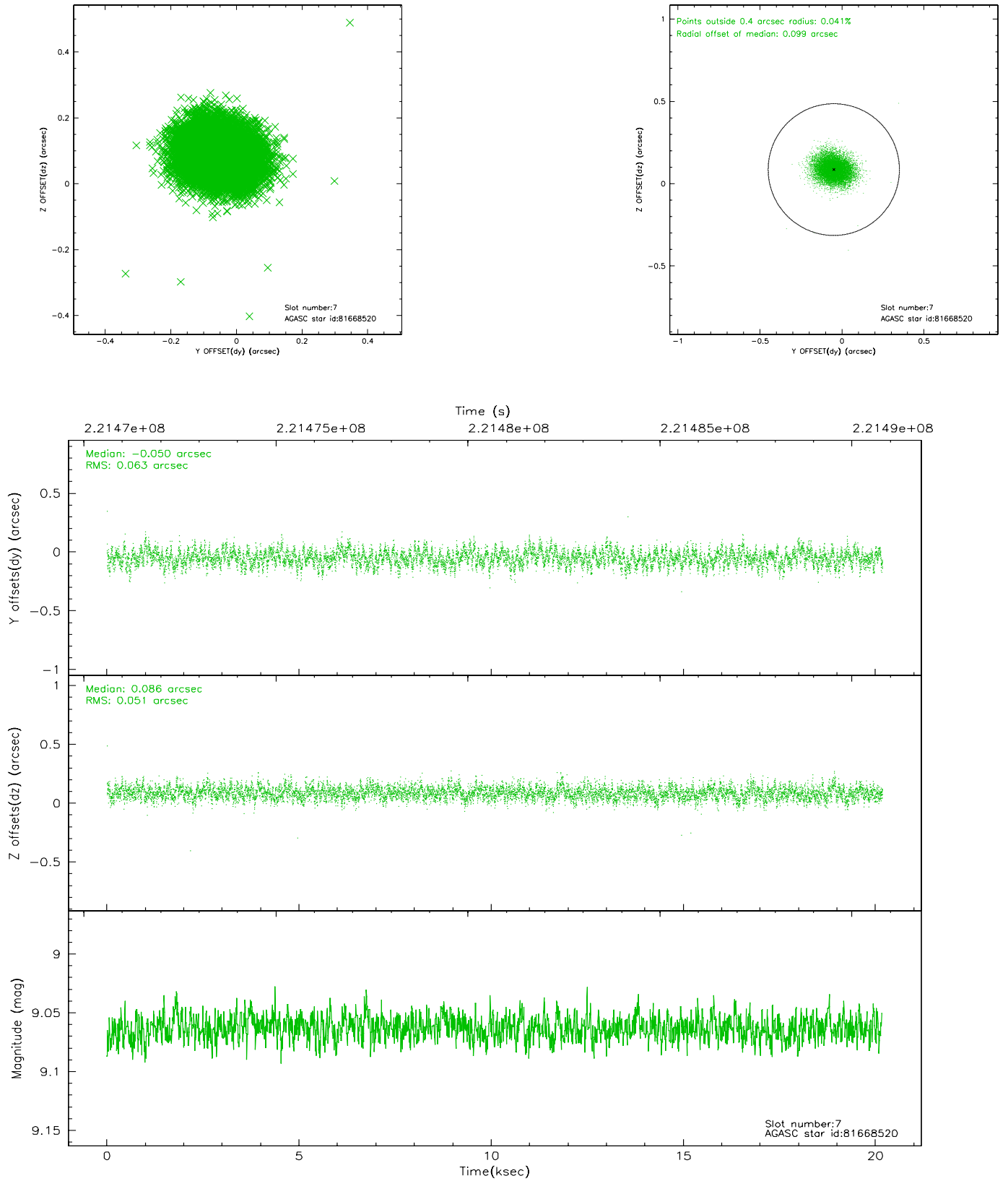
### 2.4.3 Slot 5



## 2.4.4 Slot 6

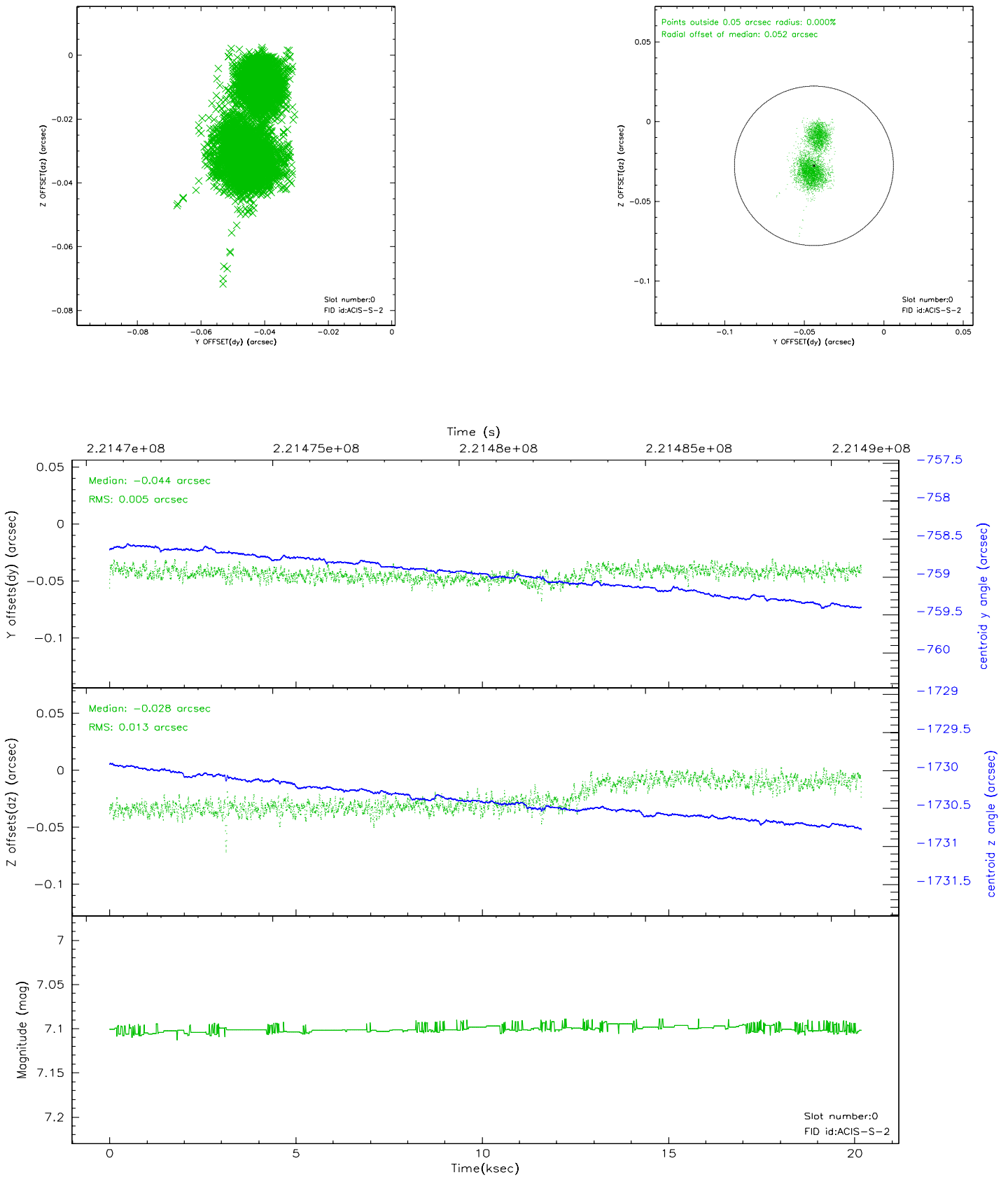


## 2.4.5 Slot 7

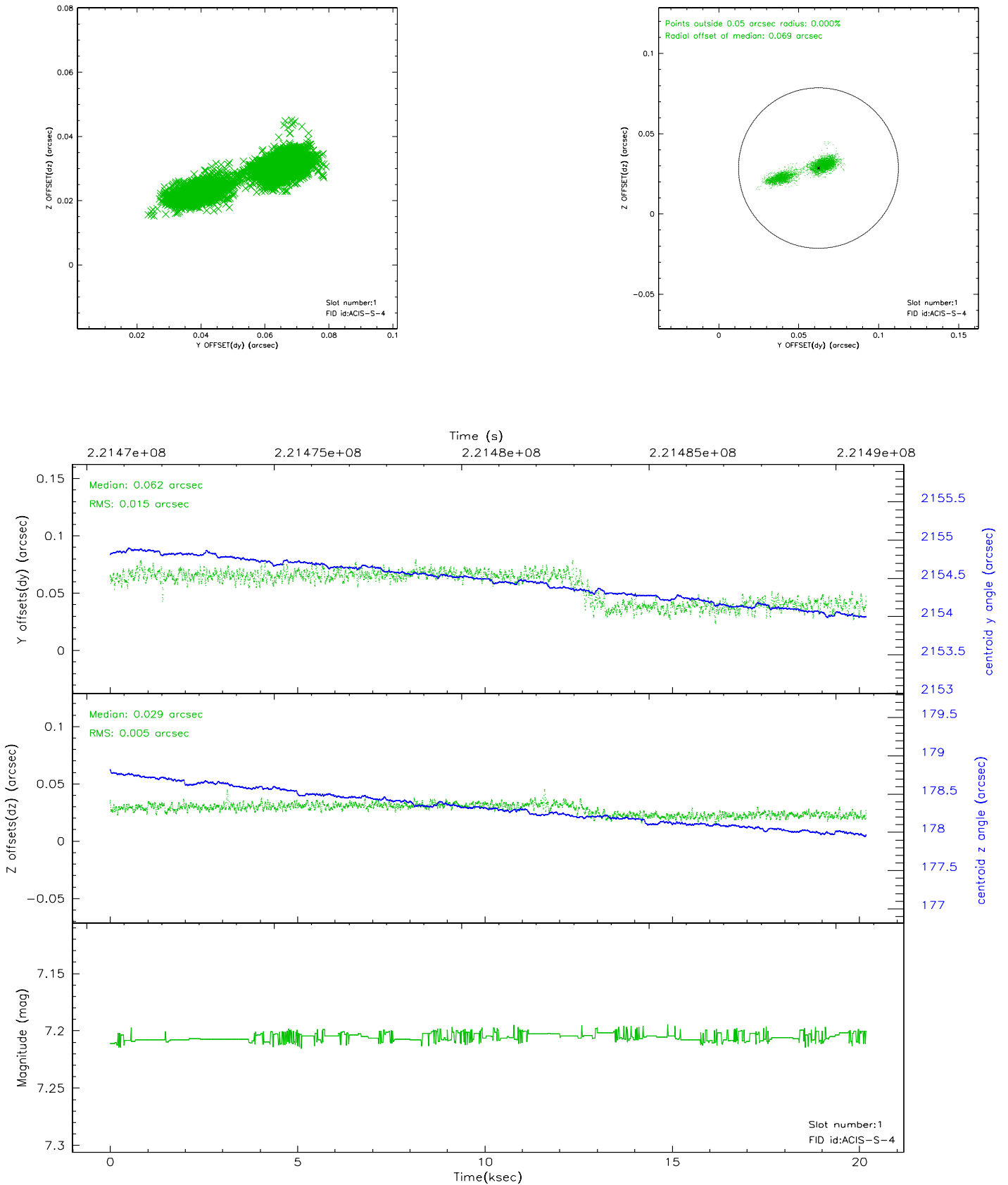


## 2.5 FID Slots

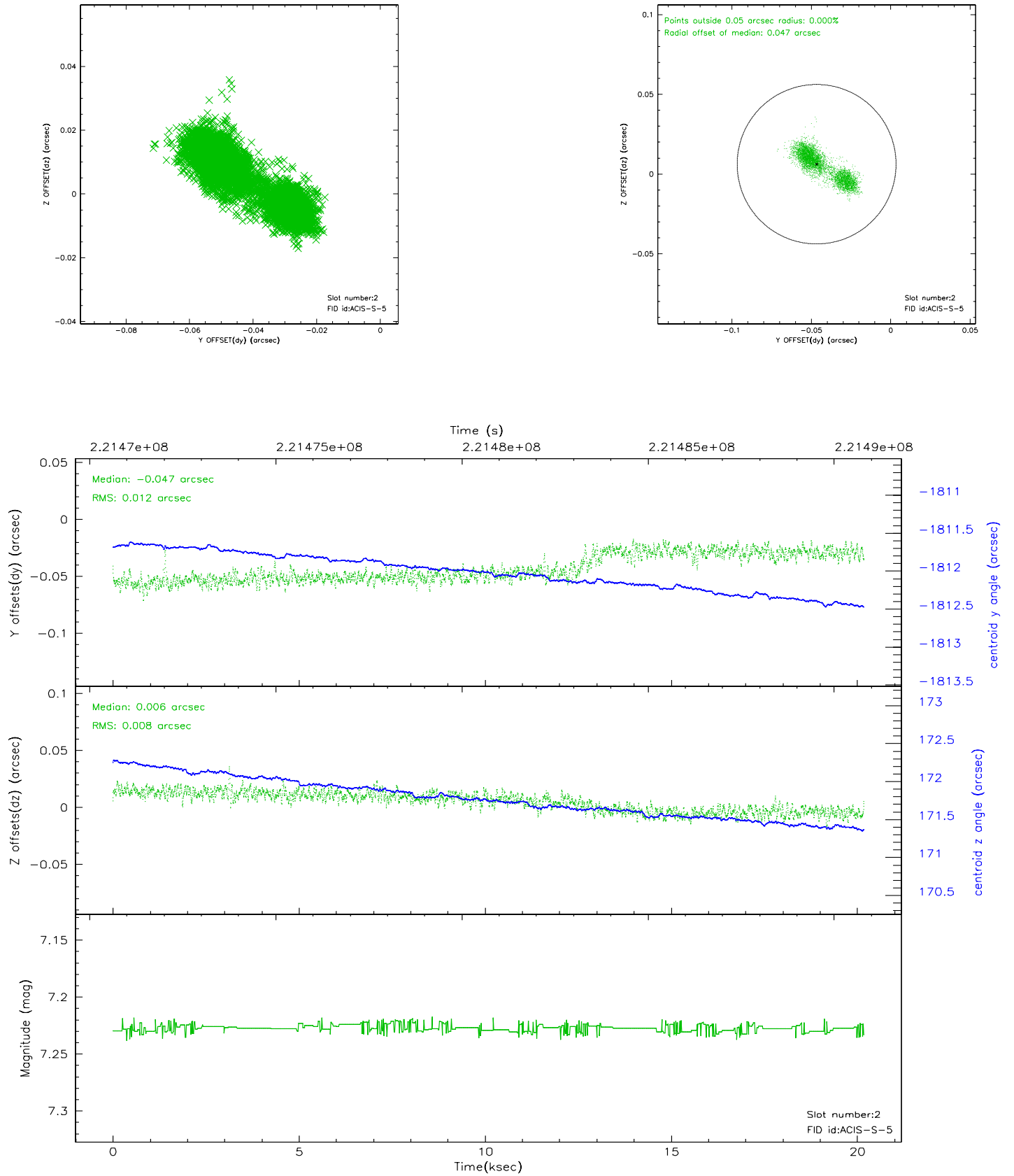
### 2.5.1 Slot 0



## 2.5.2 Slot 1

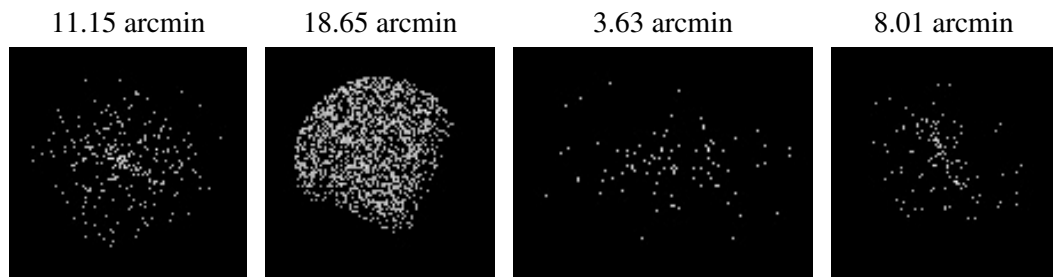


### 2.5.3 Slot 2





### 3 Point Sources



## A Summary

### A.1 Status

V&V Scientist	Beth Sundheim
V&V Date (YYYY-MM-DD)	2006.02.16
V&V Edition	1
V&V Disposition and Status	OK
V&V Charge Time	20.17789

### A.2 Comments

Charge time:

Using existing charge time of 20.17789.