

# V&V Reference Report

## L2 ASCDS Version : 8.4.4

Observation 57891 - L2 Version 2  
Chandra X-Ray Center

L2 Processing Date : May 12 2012

## Contents

<b>1</b>	<b>Front</b>	<b>2</b>
<b>2</b>	<b>OBI</b>	<b>3</b>
2.1	OBI . . . . .	3
2.1.1	Images . . . . .	3
2.1.2	Bias . . . . .	3
2.1.3	Parameters . . . . .	4
2.1.4	Events . . . . .	4
2.2	Compared Parameters . . . . .	5
2.3	Star Slots . . . . .	6
2.4	FID Slots . . . . .	6
<b>A</b>	<b>Summary</b>	<b>7</b>
A.1	Status . . . . .	7
A.2	Comments . . . . .	7

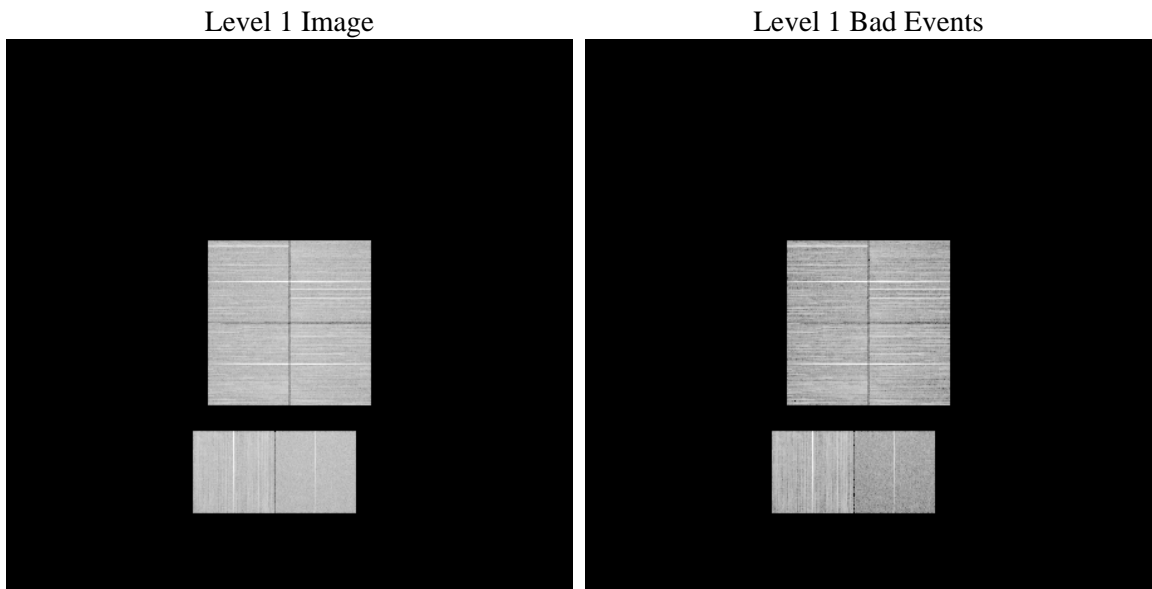
# 1 Front

seq_num	&#160	Sequence number
obs_id	57891	Observation id
title	ACIS-012367 diagnostics	Proposal title
observer	CHANDRA engineering request/realtime commanding	Principal investig
object	&#160	Source name
dtcycle	0	&#160
cycle	P	events from which exps? Prim/Second/Both
ra_targ	0.0	Observer's specified target RA [deg]
dec_targ	0.0	Observer's specified target Dec [deg]
ra_nom	182.84938069025	Nominal RA [deg]
dec_nom	21.648582034952	Nominal Dec [deg]
roll_nom	195.28883752225	Nominal Roll [deg]
revision	2	Processing version of data
ontime	8044.7999700904	Sum of GTIs [s]
livetime	7942.9318688721	Livetime [s]
ontime0	7017.4050911665	Sum of GTIs [s]
ontime1	7224.8287215829	Sum of GTIs [s]
ontime2	6764.6079062223	Sum of GTIs [s]
ontime3	6952.5856818557	Sum of GTIs [s]
ontime6	7266.9618436098	Sum of GTIs [s]
ontime7	8044.7999700904	Sum of GTIs [s]
l2events	548119	Number of level 2 events

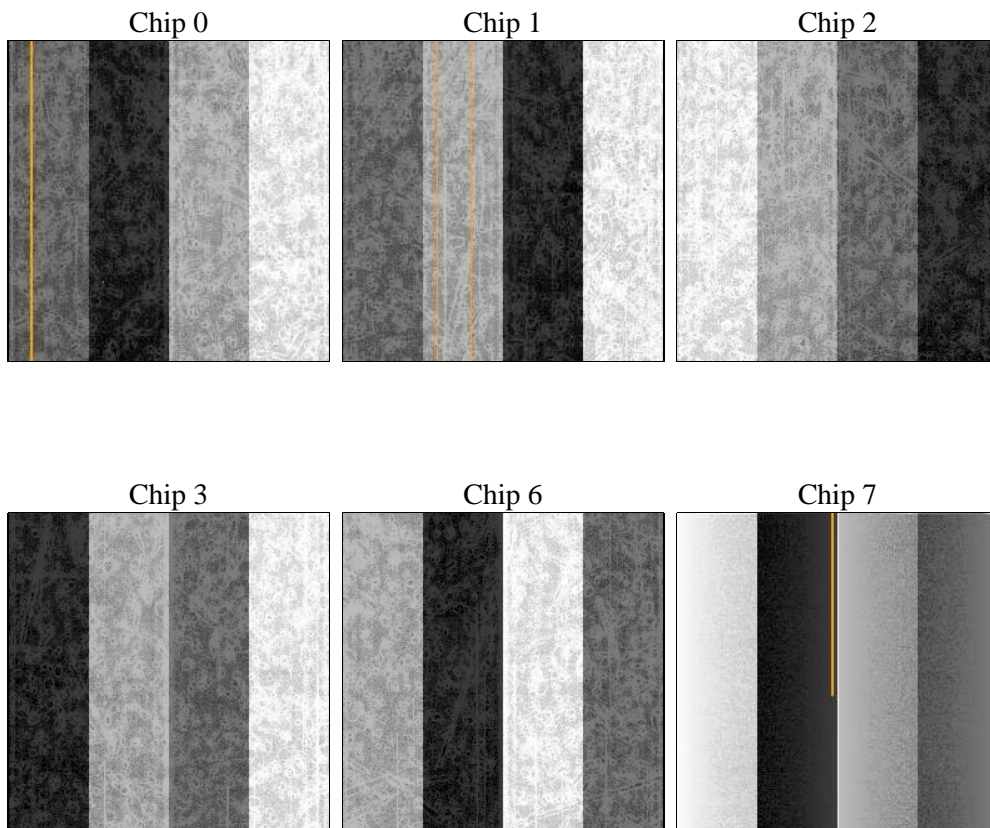
## 2 OBI

### 2.1 OBI

#### 2.1.1 Images



#### 2.1.2 Bias



### 2.1.3 Parameters

obi_num	0	Obi number	sched_exp_time	0.0	[s] Scheduled observation exposure time
ascdsver	8.4.4	Processing system revision	ontime	8044.7999700904	Sum of GTIs [s]
caldsver	4.4.9	&#160	ontime0	7017.4050911665	Sum of GTIs [s]
date	2012-05-12T04:36:29	Date and time of file creation	ontime1	7224.8287215829	Sum of GTIs [s]
revision	2	Processing version of data	ontime2	6764.6079062223	Sum of GTIs [s]
			ontime3	6952.5856818557	Sum of GTIs [s]
			ontime6	7266.9618436098	Sum of GTIs [s]
			ontime7	8044.7999700904	Sum of GTIs [s]
			l1events	1448652	Number of level 1 events

### 2.1.4 Events

	ccd 0	ccd 1	ccd 2	ccd 3	ccd 6	ccd 7		ccd 0	ccd 1	ccd 2	ccd 3	ccd 6	ccd 7
level 1 events	228929	249768	237712	245980	260468	225795	grade 0 events	45904	47605	45506	46960	49252	26707
rejected events	142982	160320	153729	159651	166303	88301		20%	19%	19%	19%	18%	11%
rejected %	62%	64%	64%	64%	63%	39%	grade 1 events	299	260	351	352	332	140
								0%	0%	0%	0%	0%	0%
							grade 2 events	15775	16587	15112	15339	17459	33423
								6%	6%	6%	6%	6%	14%
							grade 3 events	5722	5779	5658	5752	5982	12509
								2%	2%	2%	2%	2%	5%
							grade 4 events	5750	5787	5625	5772	6030	12414
								2%	2%	2%	2%	2%	5%
							grade 5 events	3236	3539	2993	3633	3756	10333
								1%	1%	1%	1%	1%	4%
							grade 6 events	12837	13725	12124	12555	15472	52490
								5%	5%	5%	5%	5%	23%
							grade 7 events	139406	156486	150343	155617	162185	77779
								60%	62%	63%	63%	62%	34%

## 2.2 Compared Parameters

Parameter	Planned	Actual
Instrument	ACIS	ACIS
Detector	ACIS-012367	ACIS-012367
Grating	NONE	NONE
Data mode	FAINT	FAINT
Observation mode	SECONDARY	SECONDARY
[deg] Pointing RA	0	182.8493806902452
[deg] Pointing Dec	0	21.64858203495209
[deg] Pointing Roll	0.0	195.2888375222533
[mm] SIM focus pos	-1.429586	-0.6828225247311905
[mm] SIM defocus	0.1037507710433287	0.8505141146731063
[mm] SIM translation stage pos	250.455976	250.4635187648994
[mm] SIM translation stage offset	0	-0.007540371344731511
[s] Observation start time (MET)	323306140.142711	323306139.11771
Observation start date	2008-03-30T23:15:40	2008-03-30T23:15:39
[s] Observation end time (MET)	323327449.893748	323327448.86875
Observation end date	2008-03-31T05:10:50	2008-03-31T05:10:48
Read mode	TIMED	TIMED

Parameter	Planned	Actual
Obspar format version number	7	7
Obspar file type	PREDICTED	ACTUAL
Obspar update status	NONE	UPDATED
On-chip summing requested	N	N
Subarray requested	NONE	NONE
Alternating exposures requested	N	N
[s] Primary exposure time	3.2	3.2

## 2.3 Star Slots

## 2.4 FID Slots

## A Summary

### A.1 Status

V&V Scientist	Beth Sundheim
V&V Date (YYYY-MM-DD)	2012.05.15
V&V Edition	1
V&V Disposition and Status	OK
V&V Charge Time	8.0447999700904

### A.2 Comments