

V&V Reference Report

L2 ASCDS Version : 7.6.7

Observation 5781 - L2 Version 002
Chandra X-Ray Center

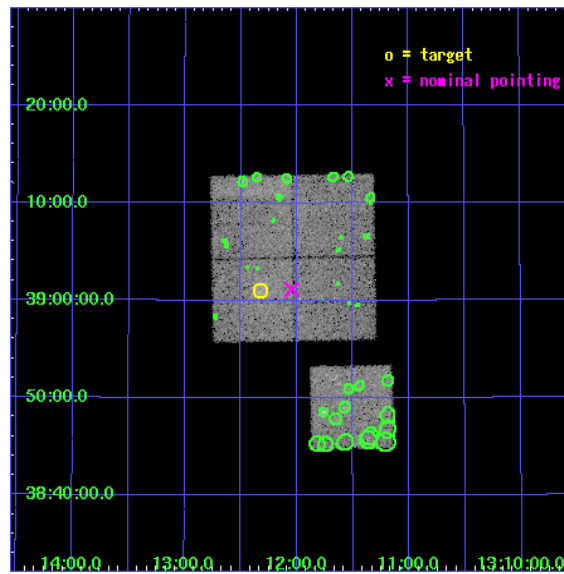
L2 Processing Date: Feb 28 2006

Contents

1	Front	2
2	OBI	3
2.1	OBI	3
2.1.1	Images	3
2.1.2	Bias	3
2.1.3	Parameters	4
2.1.4	Events	4
2.2	Compared Parameters	5
2.3	Aspect	6
2.4	Star Slots	9
2.4.1	Slot 3	9
2.4.2	Slot 4	10
2.4.3	Slot 5	11
2.4.4	Slot 6	12
2.4.5	Slot 7	13
2.5	FID Slots	14
2.5.1	Slot 0	14
2.5.2	Slot 1	15
2.5.3	Slot 2	16
3	Point Sources	17
A	Summary	18
A.1	Status	18
A.2	Comments	18

1 Front

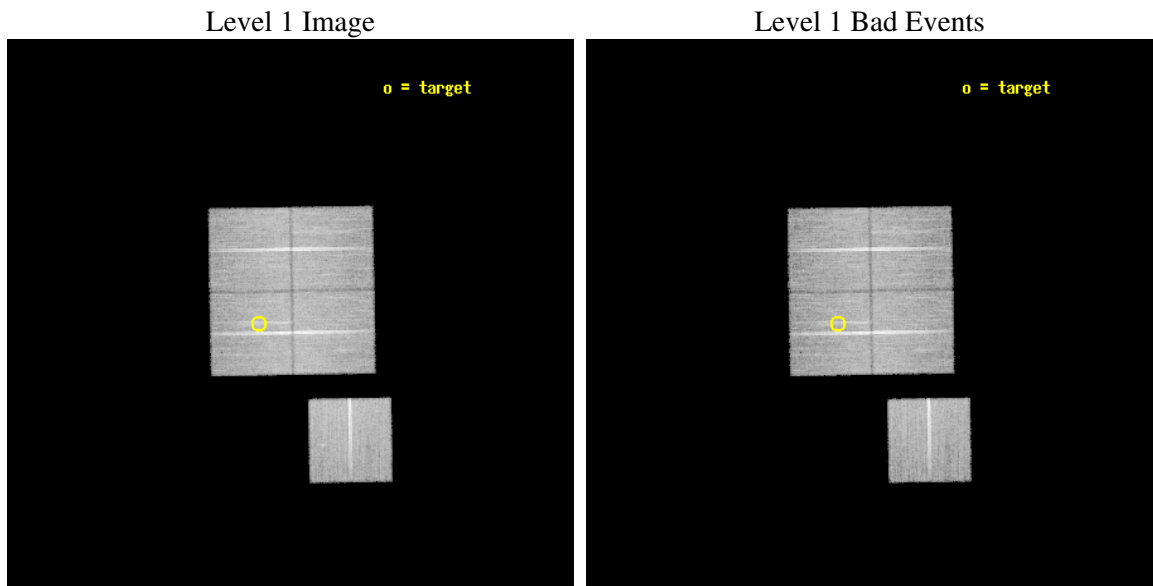
seq_num	800494
obs_id	5781
title	Chandra observations of high-redshift clusters of galaxies from the 400 Square Degrees ROSAT PSPC survey
observer	Dr. Steven Murray
object	cl1312+3900
dtcycle	0
cycle	P
ra_targ	198.080833
dec_targ	39.016111
ra_nom	198.01106188392
dec_nom	39.019025037198
roll_nom	179.05743840532
revision	2
ontime	26771.517967999
livetime	26421.728376842
ontime0	26774.658958286
ontime1	26771.517948091
ontime2	26777.799948514
ontime3	26771.517967999
ontime6	26774.658938348
l2events	92578



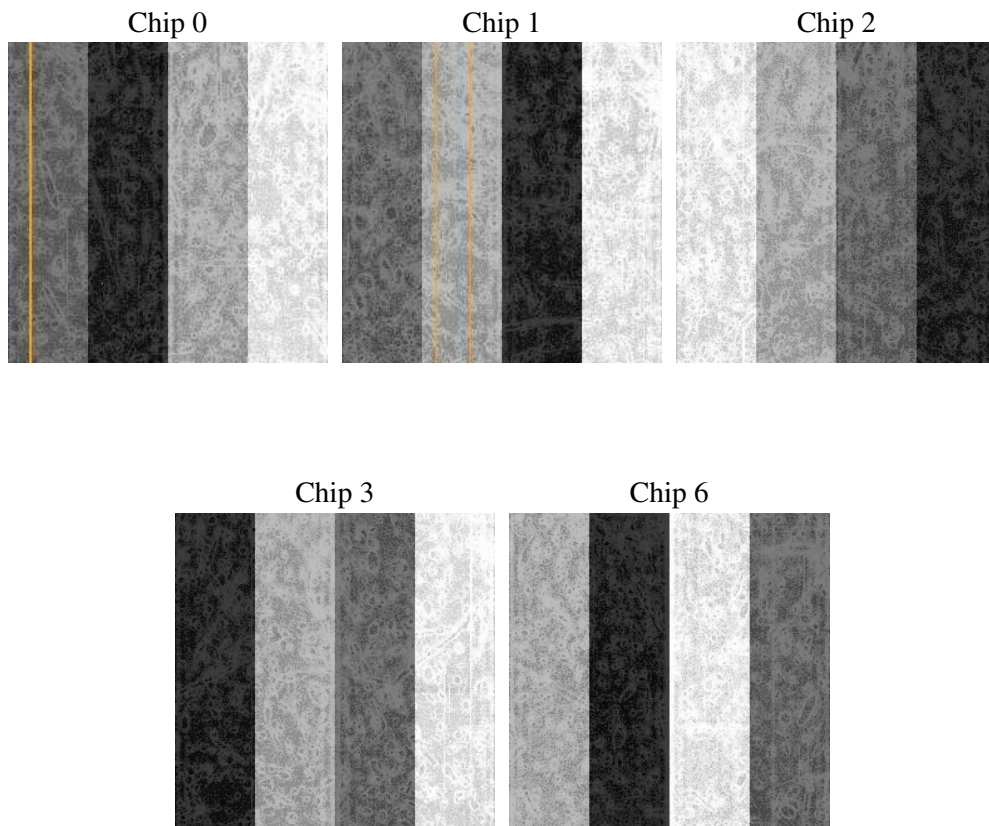
2 OBI

2.1 OBI

2.1.1 Images



2.1.2 Bias



2.1.3 Parameters

obi_num	2
ascdsver	7.6.7
caldbver	3.2.1
date	2006-02-28T16:48:35
revision	2

sched_exp_time	27006.922000
ontime	26777.118696541
ontime0	26780.25966692
ontime1	26777.118676633
ontime2	26783.400657147
ontime3	26777.118696541
ontime6	26780.25966689
l1events	865762

2.1.4 Events

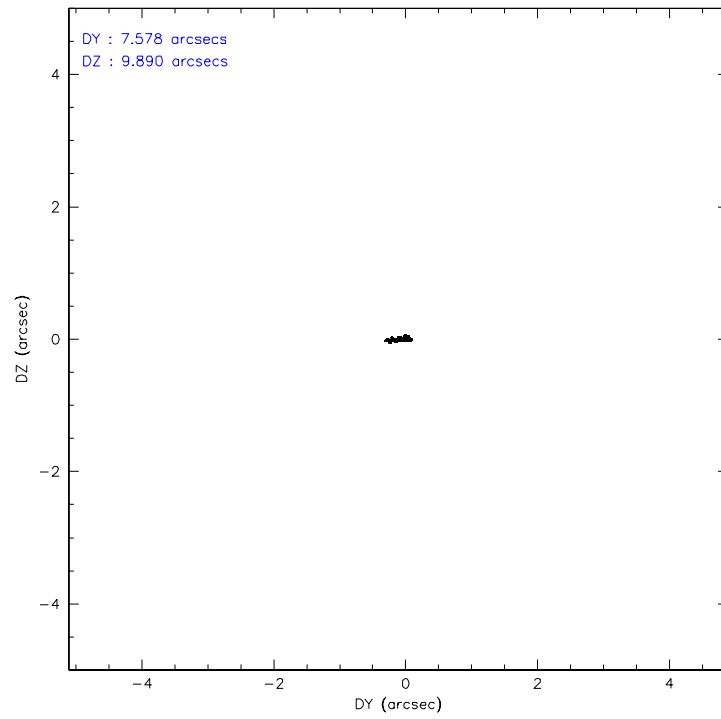
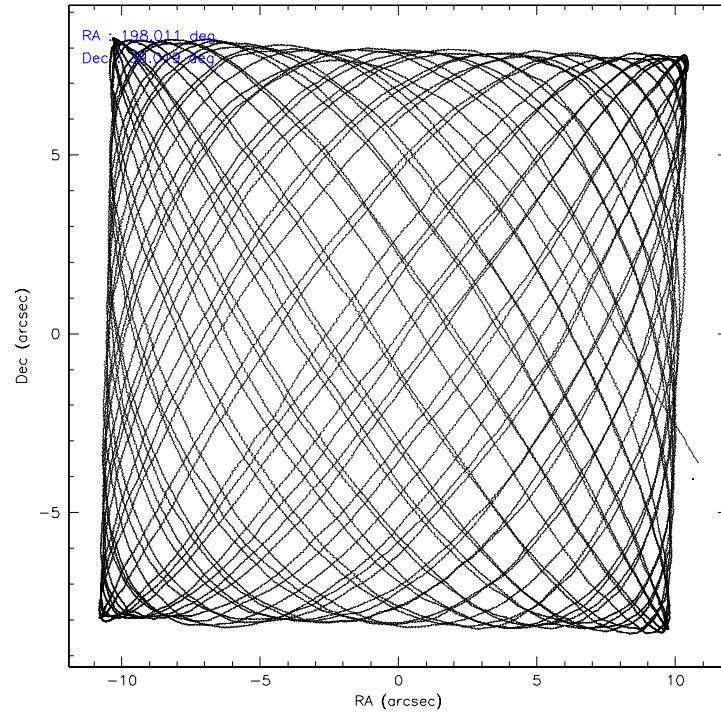
	ccd 0	ccd 1	ccd 2	ccd 3	ccd 6
level 1 events	164963	166752	181827	173883	178337
rejected events	143844	143346	161565	152864	155976
rejected %	87%	85%	88%	87%	87%

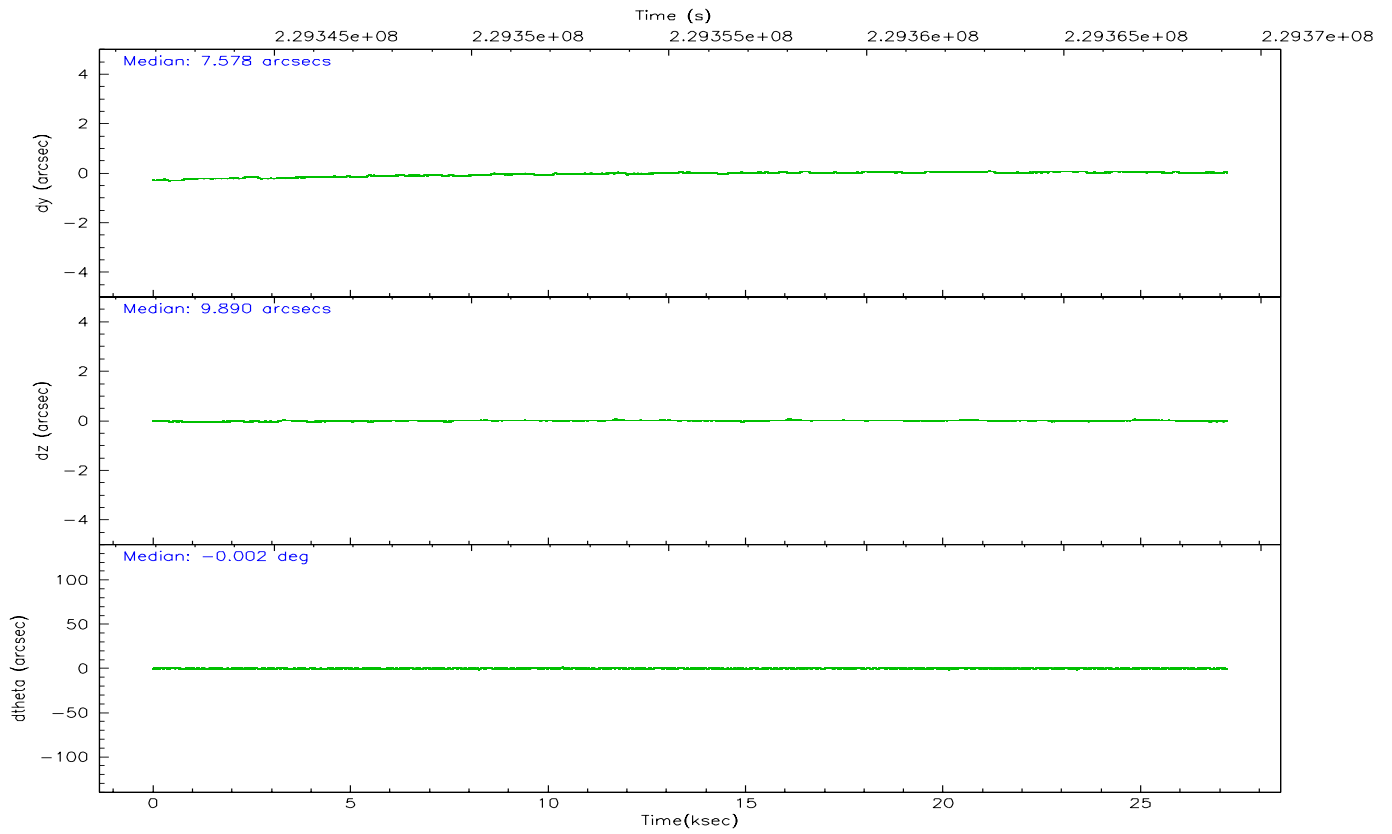
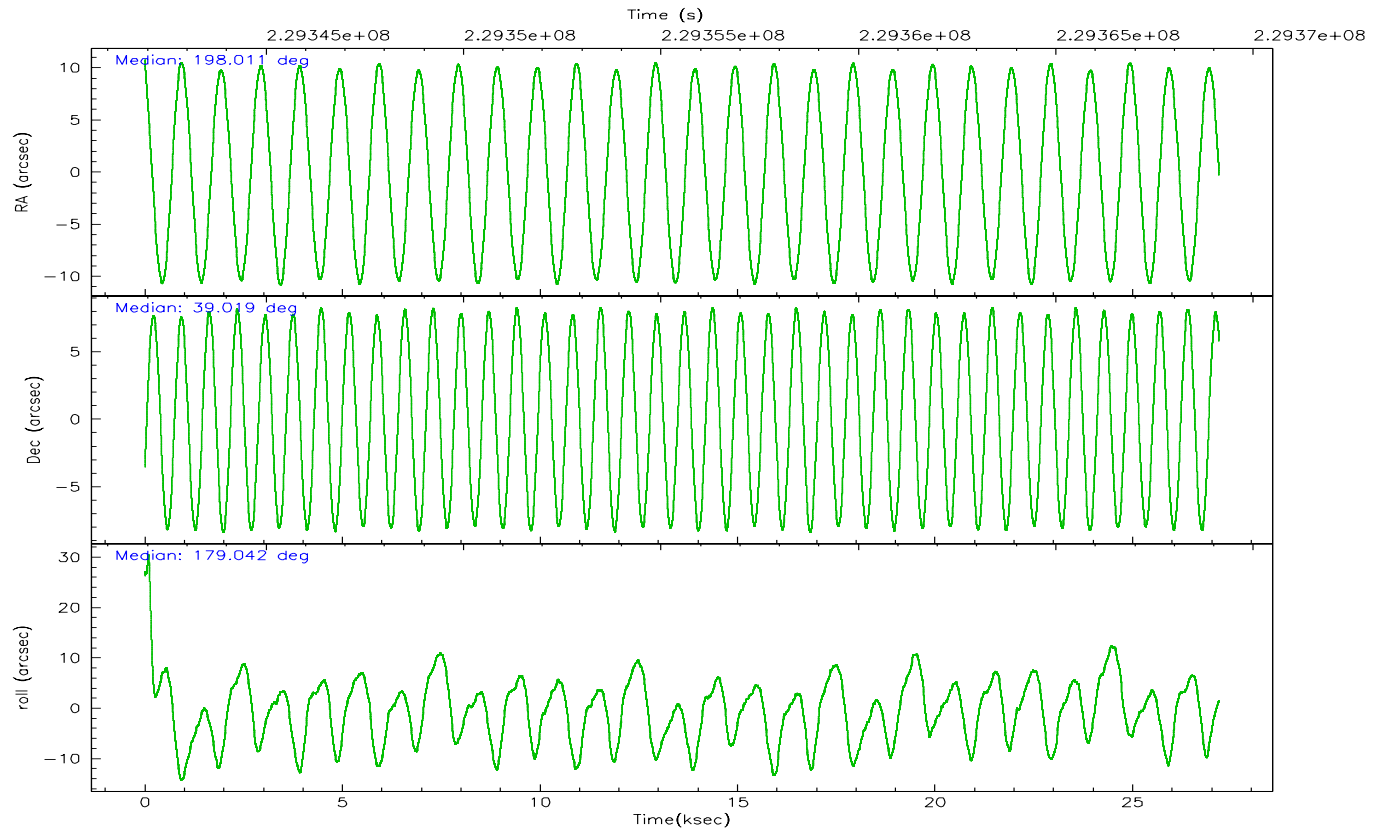
	ccd 0	ccd 1	ccd 2	ccd 3	ccd 6
grade 0 events	9061	10415	8929	9531	10050
	5%	6%	4%	5%	5%
grade 1 events	101	90	88	86	89
	0%	0%	0%	0%	0%
grade 2 events	4511	4595	4118	3968	4138
	2%	2%	2%	2%	2%
grade 3 events	2182	2195	1937	2112	2078
	1%	1%	1%	1%	1%
grade 4 events	1957	2237	2013	1935	2034
	1%	1%	1%	1%	1%
grade 5 events	6017	6586	5746	6845	6784
	3%	3%	3%	3%	3%
grade 6 events	3409	3967	3267	3478	4066
	2%	2%	1%	2%	2%
grade 7 events	137725	136667	155729	145928	149098
	83%	81%	85%	83%	83%

2.2 Compared Parameters

Parameter	Planned	Actual	Parameter	Planned	Actual
Instrument	ACIS	ACIS	Obspar format version number	6	6
Detector	ACIS-01236	ACIS-01236	Obspar file type	PREDICTED	ACTUAL
Grating	NONE	NONE	Obspar update status	NONE	UPDATED
Data mode	VFAINT	VFAINT	On-chip summing requested	N	N
Observation mode	POINTING	POINTING	Subarray requested	NONE	NONE
Pointing RA	198.041788	198.0110618839226	Alternating exposures requested	N	N
Pointing Dec	39.032407	39.01902503719806	Primary exposure time	0.000000	3.1
Pointing Roll	178.829407	179.0574384053224			
SIM focus pos (mm)	-0.782348	-0.7809083437167272			
SIM defocus (mm)	0	0.001439871863259334			
SIM translation stage pos (mm)	-225.840463	-225.848371962627			
SIM translation stage offset (mm)	-7.752	-7.744081040302689			
Observation start time	229342122.184000	229341438.33038			
Observation start date	2005-04-08T10:07:38	2005-04-08T09:57:18			
Observation end time	229369128.184000	229369353.69415			
Observation end date	2005-04-08T17:37:44	2005-04-08T17:42:33			
Read mode	TIMED	TIMED			

2.3 Aspect



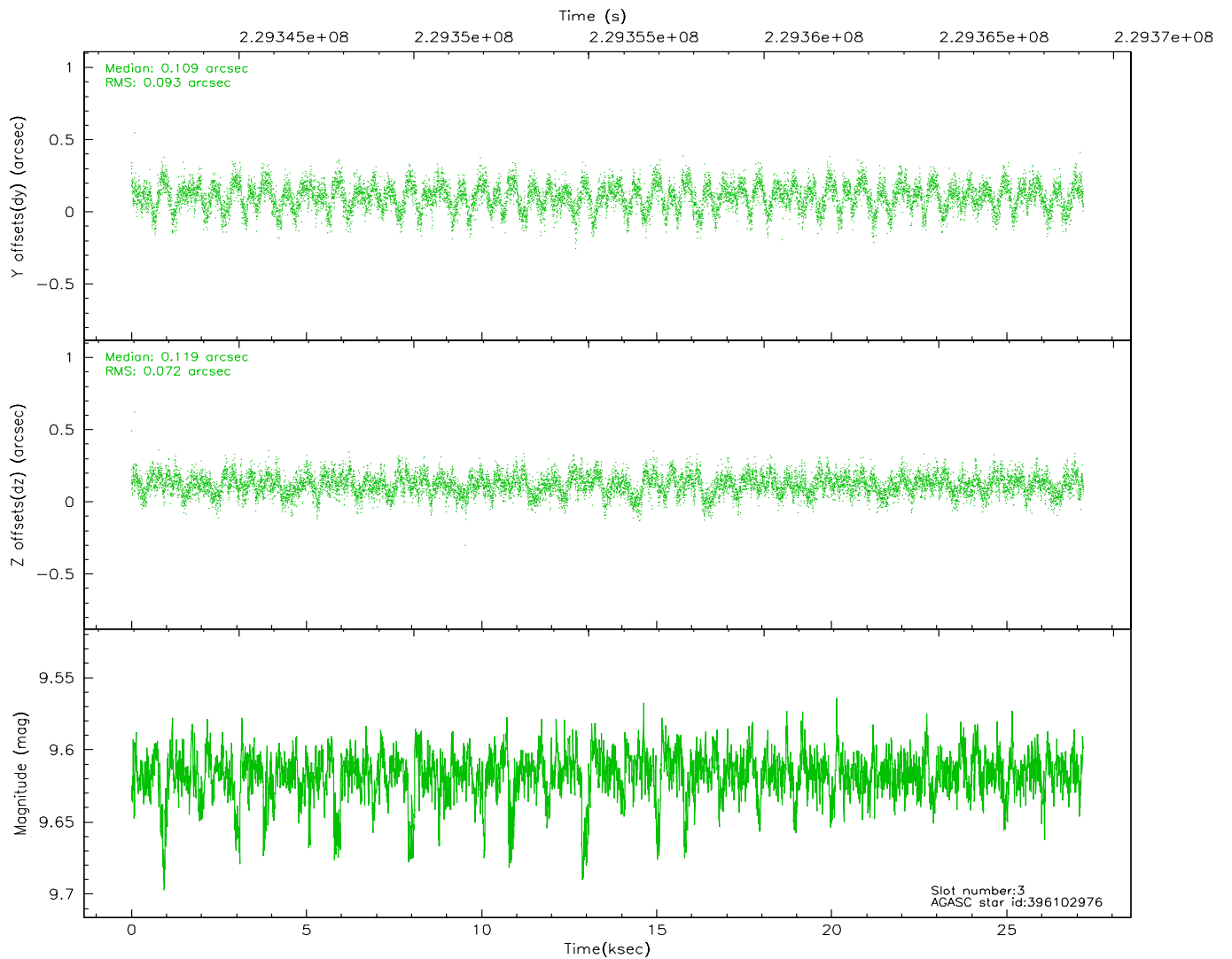
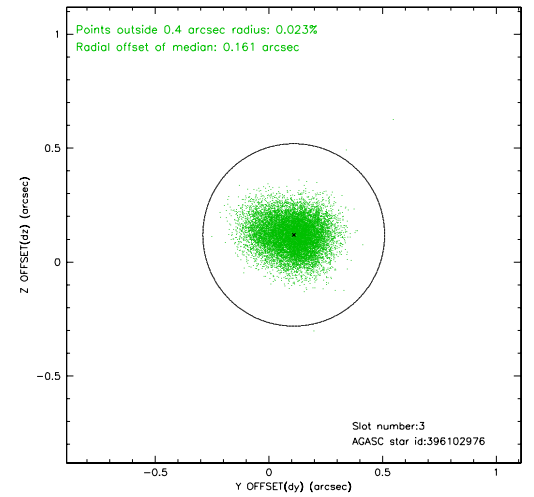
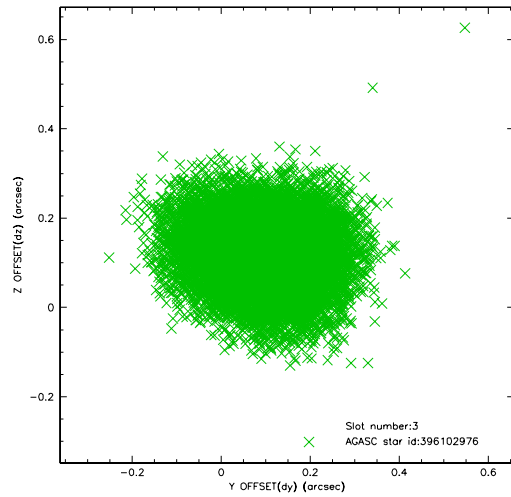


Slot Statistics

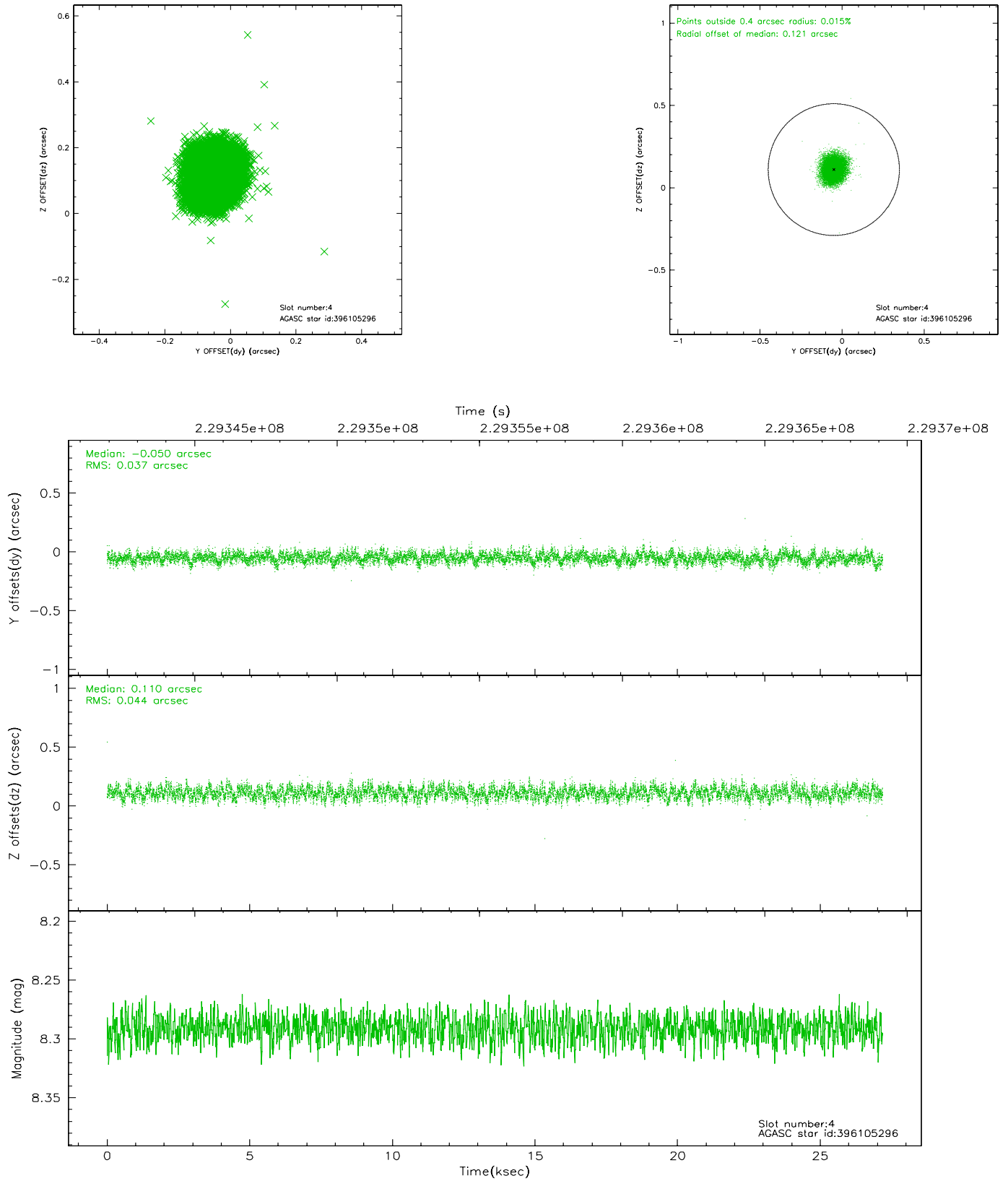
slot	status	id	mag	n_pts	med_dy	med_dz	dr1	dr2	ra	dec	mean_y	mean_z
0	FID	ACIS-I-1	7.23	6631	0.072	-0.069	0.006	0.010	0.000000	0.000000	932.06	-992.40
1	FID	ACIS-I-5	7.22	6631	-0.196	0.071	0.006	0.011	0.000000	0.000000	-1816.27	905.14
2	FID	ACIS-I-6	7.24	6631	0.033	0.069	0.007	0.011	0.000000	0.000000	397.45	1549.77
3	GUIDE	396102976	9.62	13245	0.109	0.119	0.125	0.202	197.376079	39.247071	1872.46	-741.01
4	GUIDE	396105296	8.29	13252	-0.050	0.110	0.062	0.098	197.511127	39.074247	1486.39	-124.34
5	GUIDE	396112992	10.19	13227	-0.095	-0.047	0.158	0.254	197.720972	39.655076	936.26	-2224.57
6	GUIDE	396114128	7.54	13261	0.180	-0.059	0.071	0.113	197.505379	38.723746	1483.94	1137.32
7	GUIDE	396118064	6.21	13262	-0.142	-0.123	0.079	0.117	197.513400	38.498984	1449.45	1946.01

2.4 Star Slots

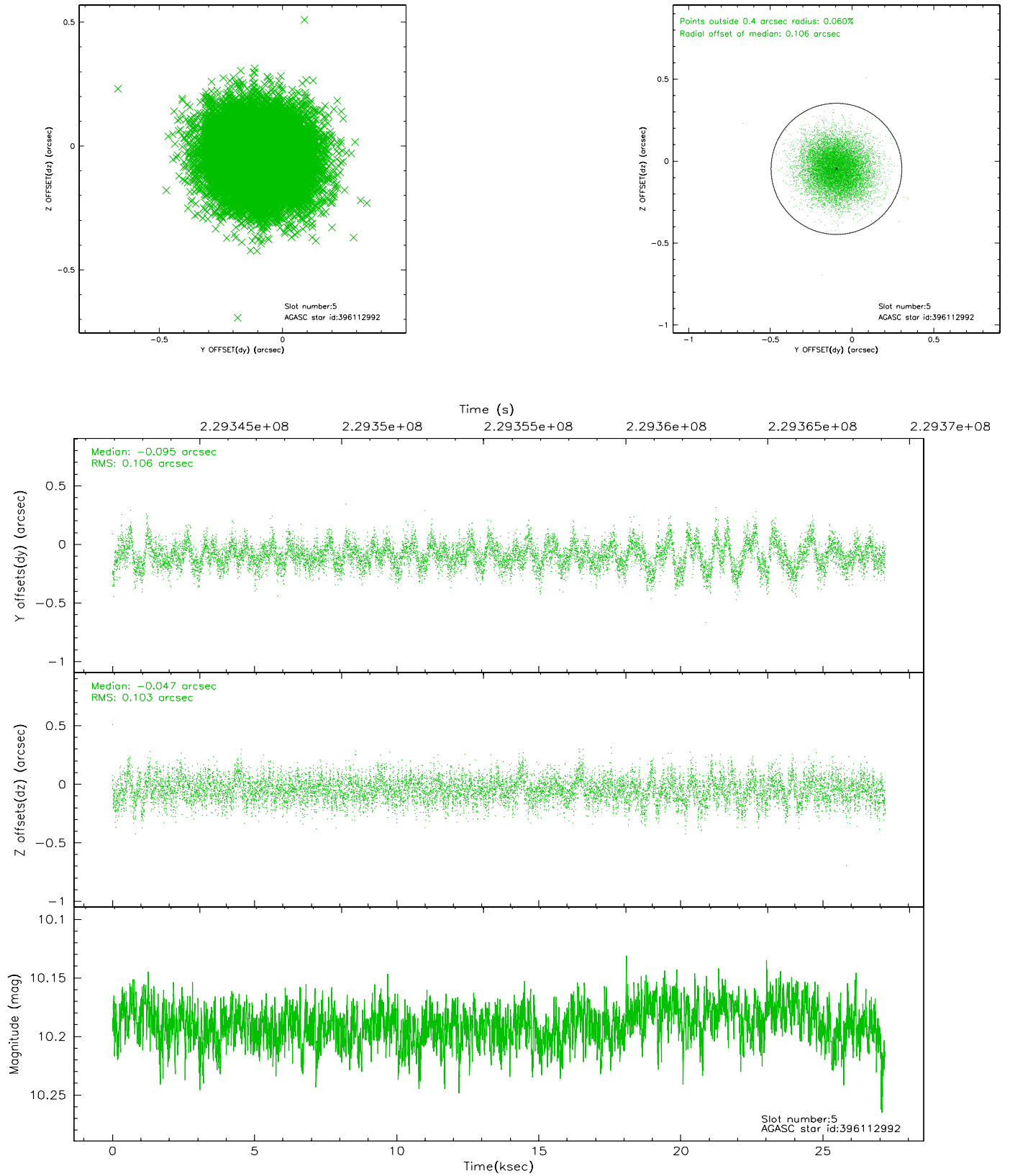
2.4.1 Slot 3



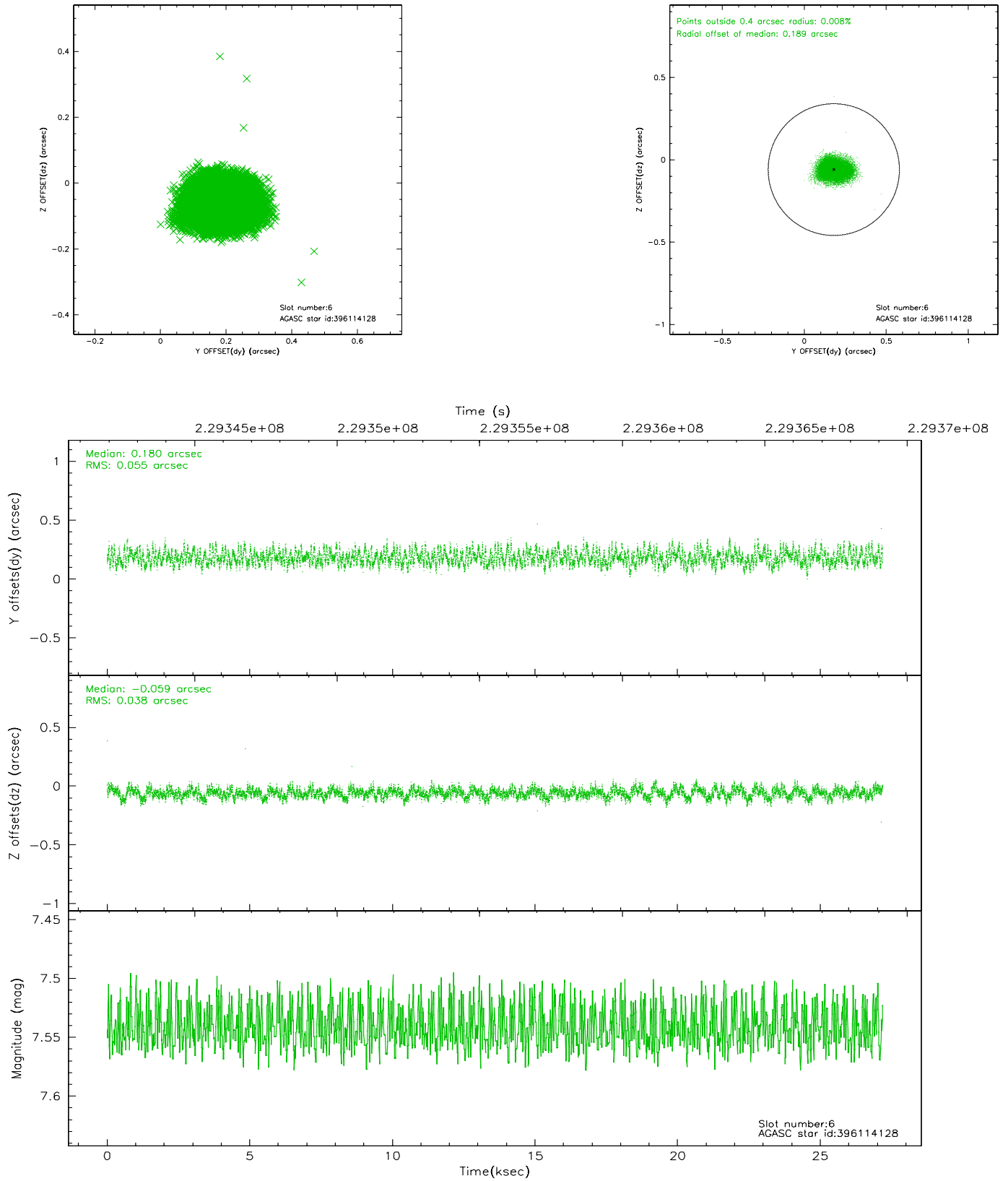
2.4.2 Slot 4



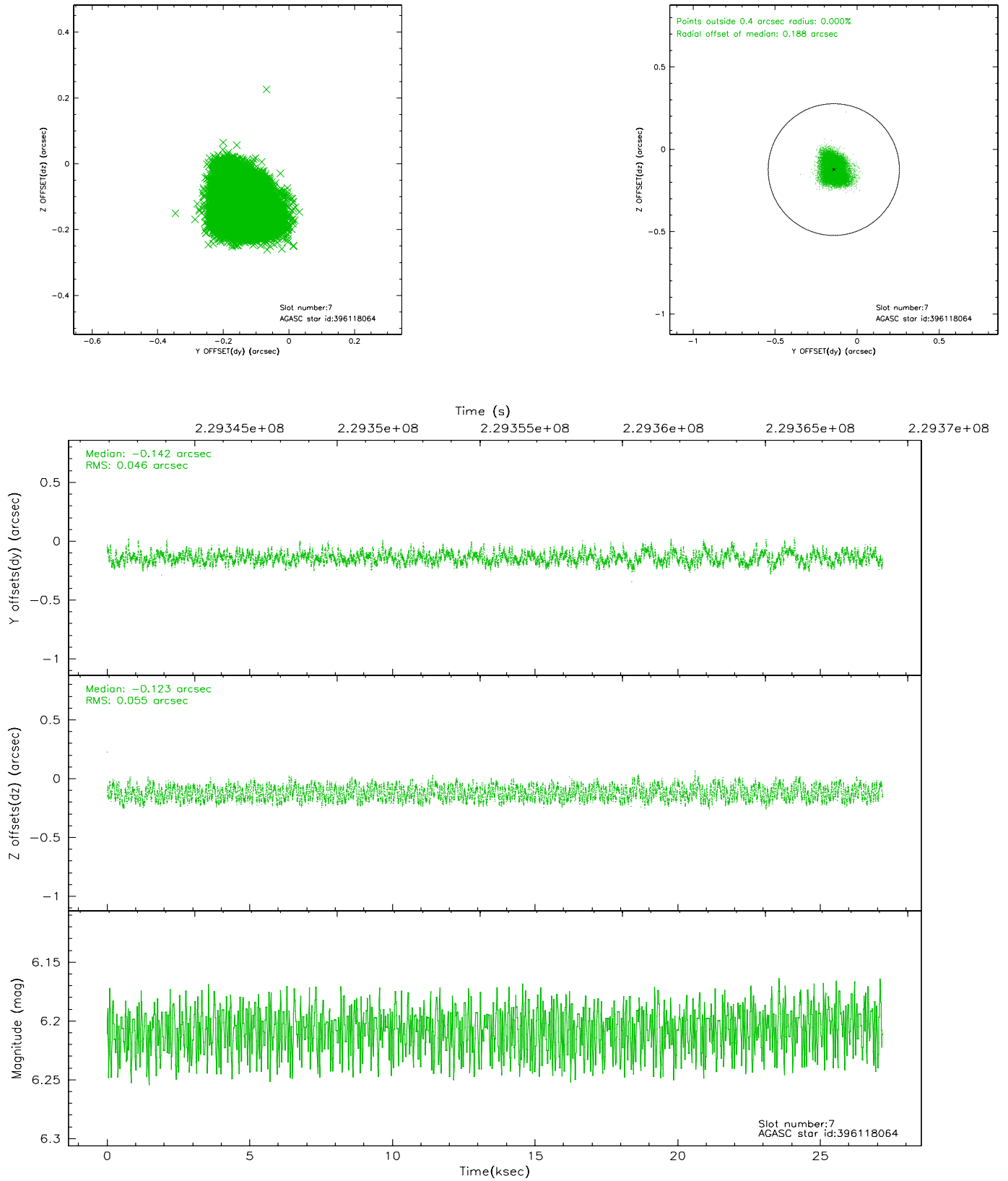
2.4.3 Slot 5



2.4.4 Slot 6

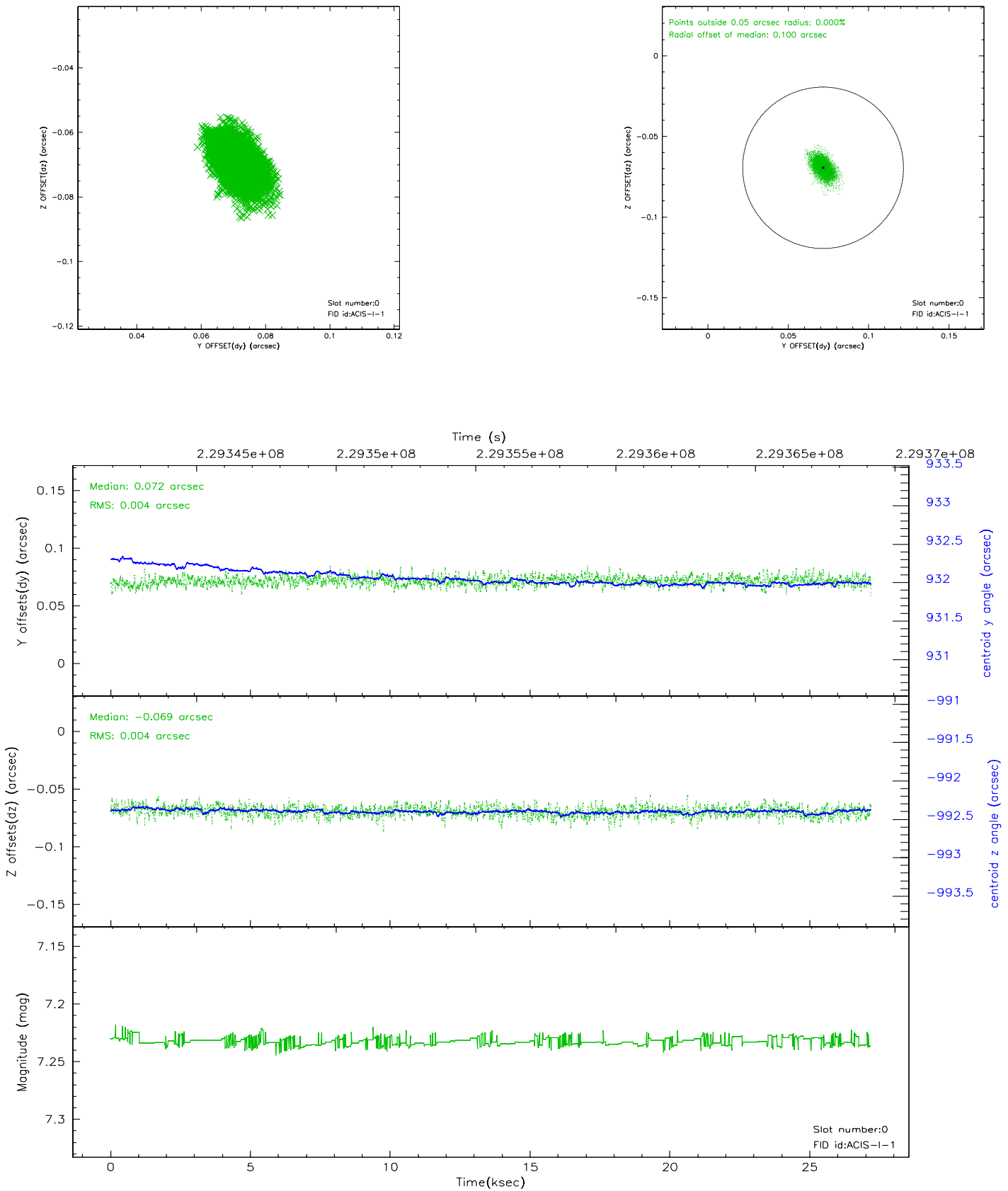


2.4.5 Slot 7

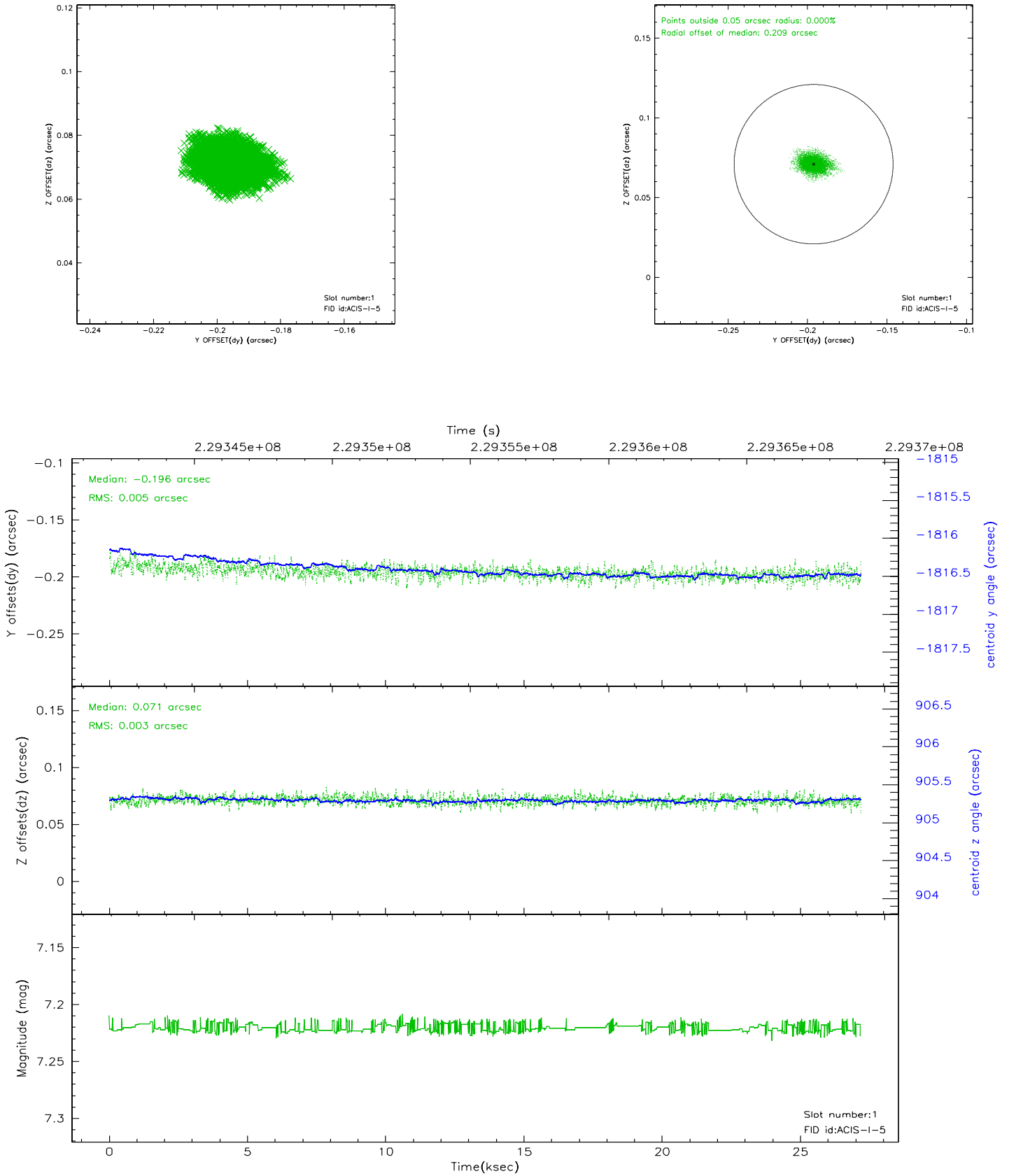


2.5 FID Slots

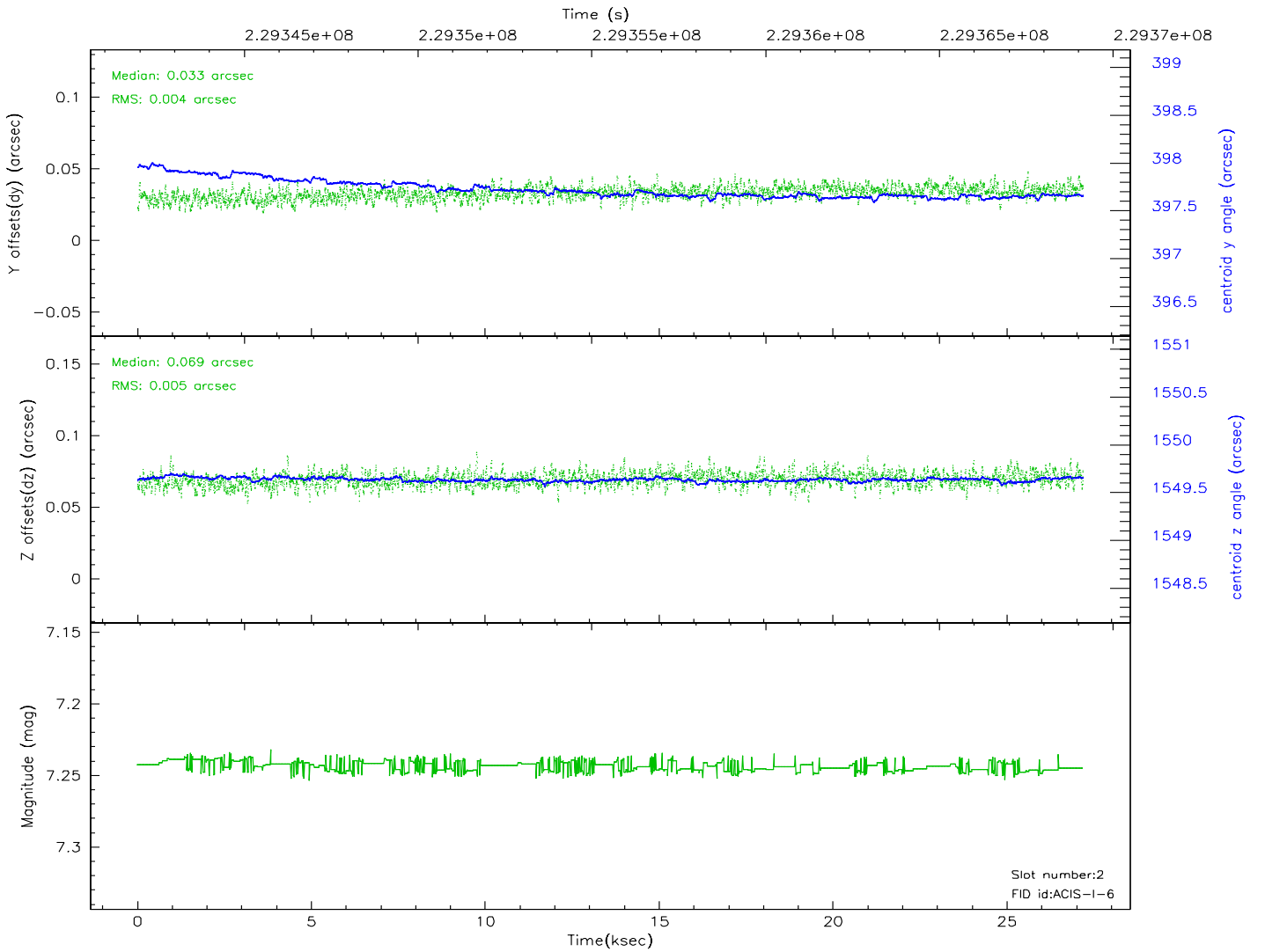
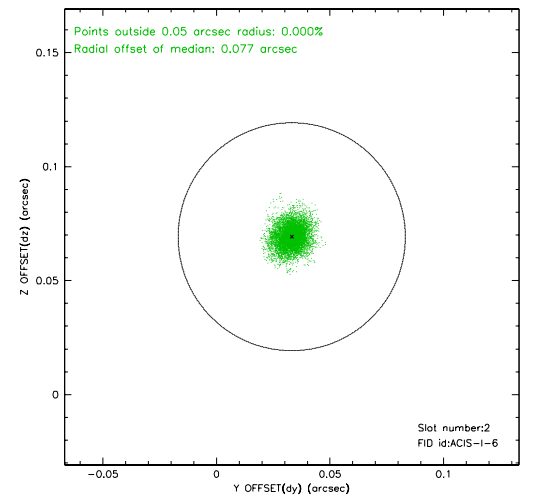
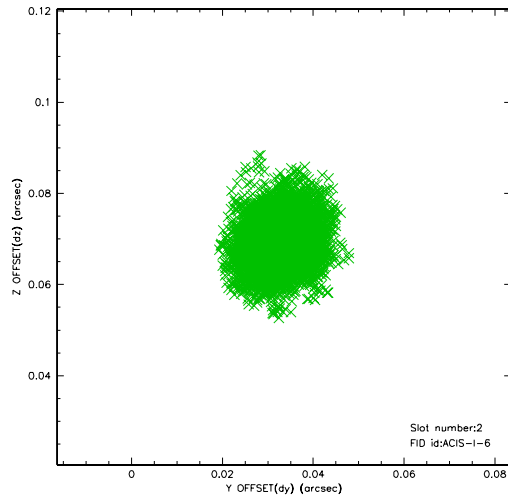
2.5.1 Slot 0



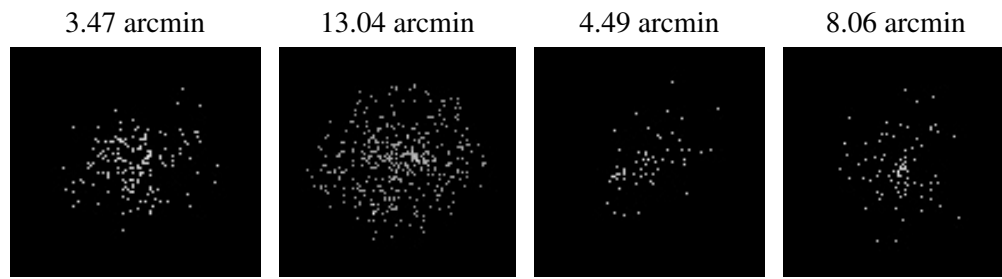
2.5.2 Slot 1



2.5.3 Slot 2



3 Point Sources



A Summary

A.1 Status

V&V Scientist	Jen Lauer
V&V Date (YYYY-MM-DD)	2006.02.28
V&V Edition	1
V&V Disposition and Status	OK
V&V Charge Time	26.77151

A.2 Comments